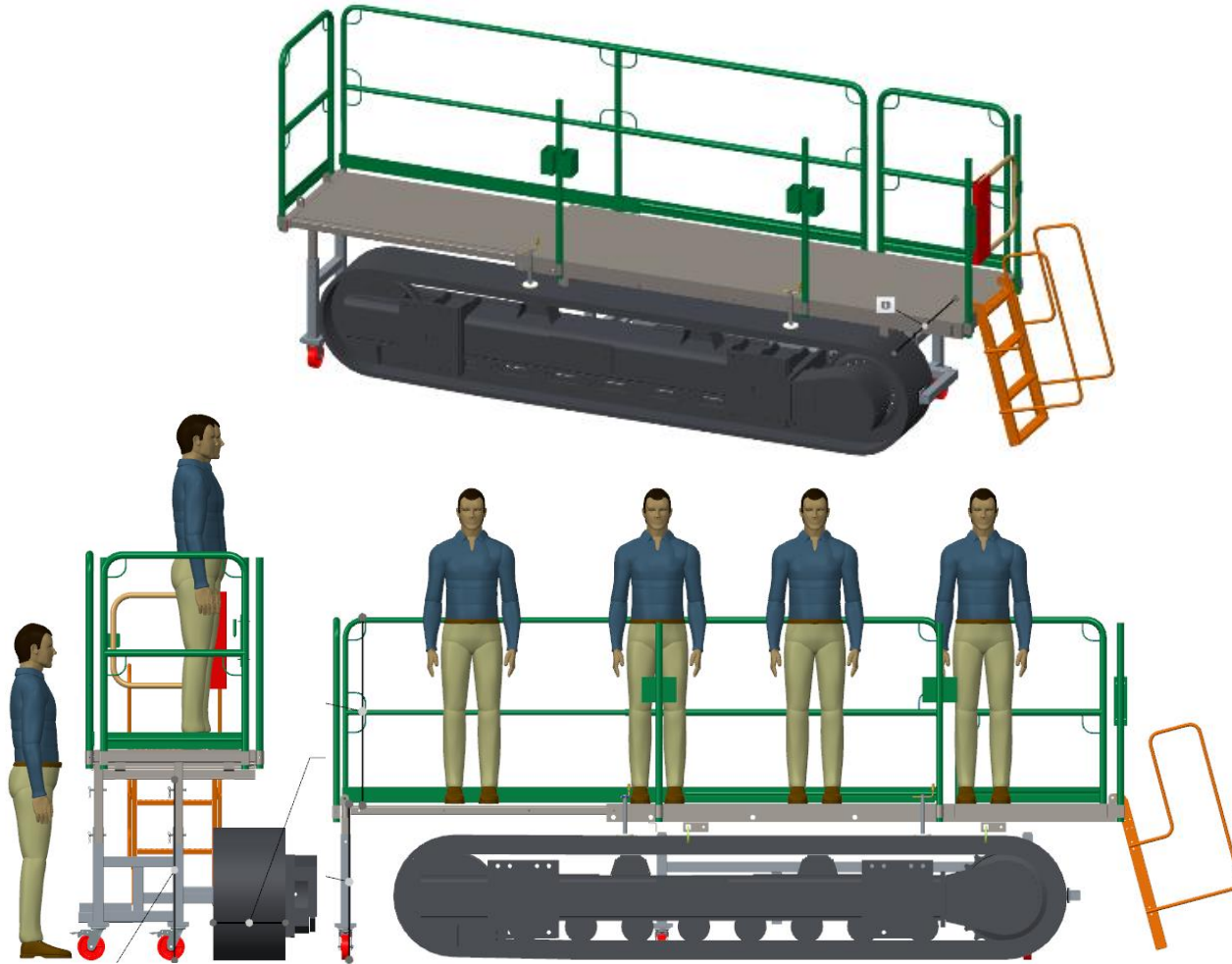


Press fit Rig Design for Road Paver Machine

- Design Test rig to press fit Disc inside Paver roller. The roller which is having function to pave the road.
- Used readily available quick attachment & Design Validated by FEA.
- Create detailed drawings for release.
- FEA to validate the design for forces applied.
- Introduced STD V-blocks for rigidity of the components.
- Designed Cylinder to press with appropriate forces.
- FEA done with simulation reflecting practical situations.
- Test rig is also analyzed for another application of pressing Rod by the critical buckling load obtained for the 1.5" diameter solid shaft for the applied external load of 27,500 lbs.



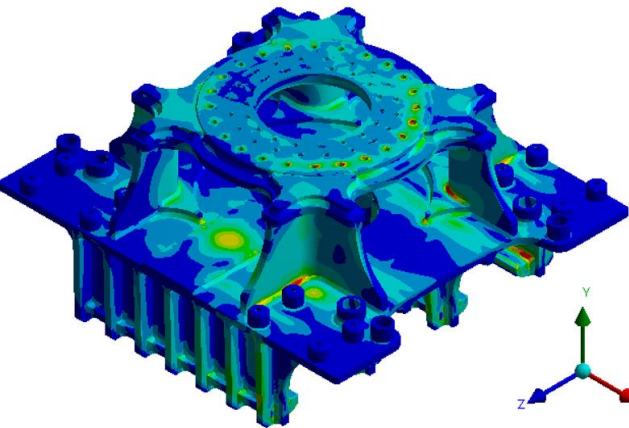
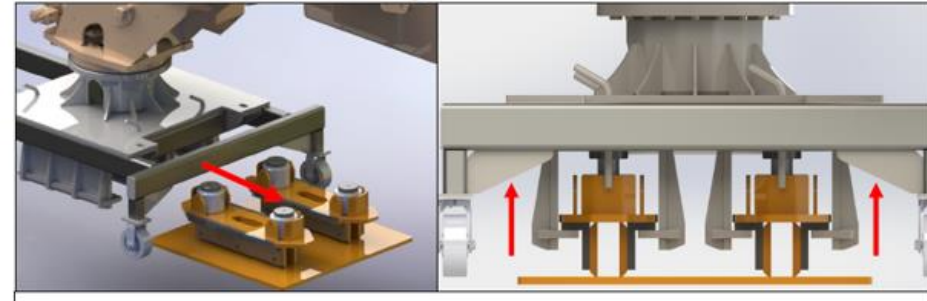
On Track working cum safety platform

- Designed platform to suit various length of tracks and heights.
- Work Platforms to comply with the Country Safety Norms.
- Design of a safety platform for assembly works done on track on standing by tracks. Currently there is a possibility of fall of workman because of absence of side or back guards.
- A requirements of platform which can suit various length of tracks and heights.
- This should be designed as per factory standards and UK safety regulations.

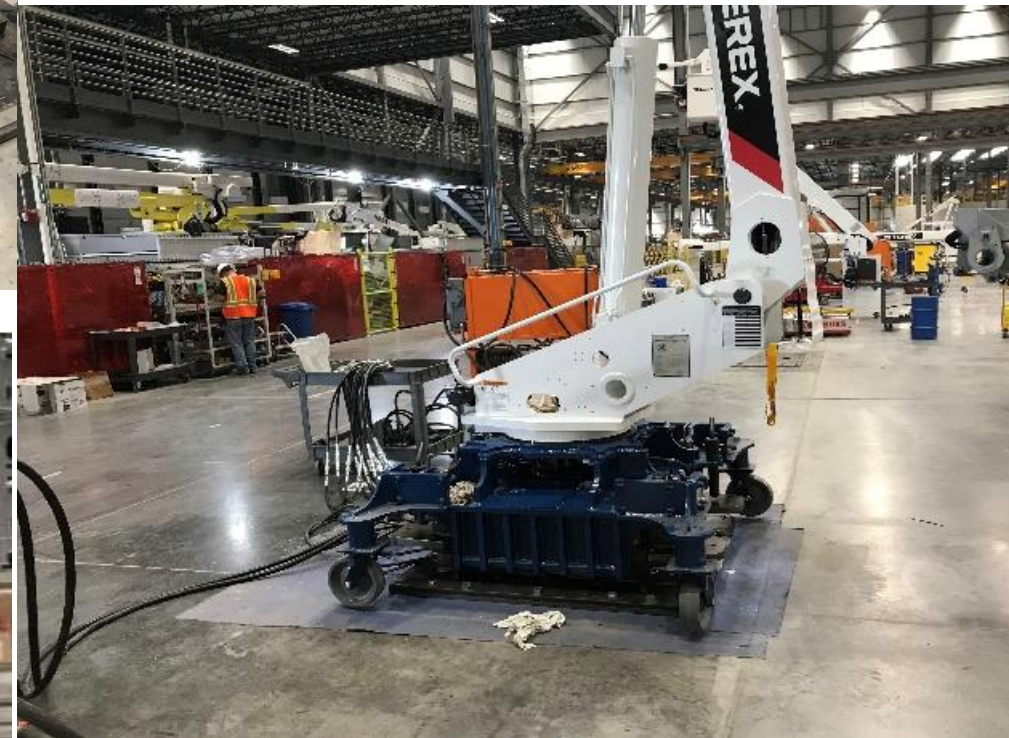
Function Requirements:

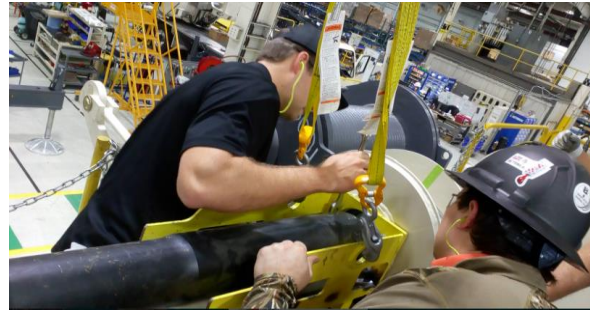
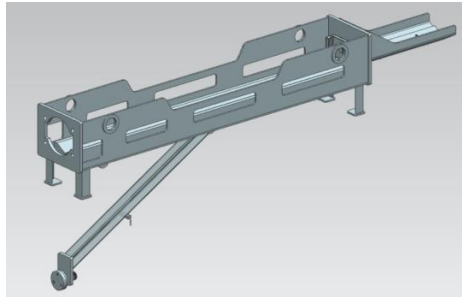
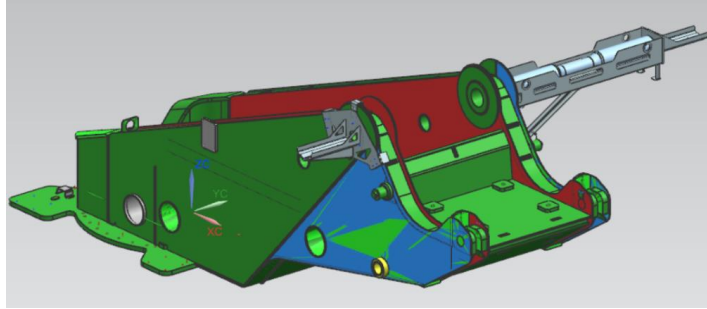
- Two Persons weighing 300 lbs. each should be able work safely from the work platforms
- Over head cranes cannot be used to move and deploy the work platforms
- One person should be able to move the Work Platform around the shop floor
- Work Platforms shall comply with Factory Safety Norms

Assembly Fixtures



Unit build and test cart for Aerial and digger products.





Boom Pivot Pin holder and puller

- Design and Fabrication of Boom Pivot Pin holder and puller.

Projected benefits:

- ✓ Safety: Work @Height, Rigging
- ✓ Productivity



Welding Fixture for 75ft Radial Chassis

- Develop weld fixtures for chassis assembly and subassemblies

Projected benefits:

- ✓ Quality improvement
- ✓ Productivity improvement

