

**PRODUCT  
SPECIFICATION**



A TEREX BRAND

# CHIPMAX 364T WHOLE TREE CHIPPER



[WWW.TEREX.COM/CBI](http://WWW.TEREX.COM/CBI)

# CHIPMAX 364T WHOLE TREE CHIPPER

## CBI CHIPMAX 364T

ENGINEERED  
FOR MAXIMUM  
PRODUCTIVITY  
AND VERSATILITY

Built from the ground up with input from forestry and wood waste professionals, the ChipMax 364T is designed to excel in real-world applications.

The ChipMax 364T industrial wood chipper is built for durability, productivity, and versatility, delivering superior performance with a lower total cost of ownership. Available with either a 755hp or 550hp engine, it operates at peak efficiency, making it a powerhouse for any operation.

Designed for maximum output, its improved chute geometry enhances chip throw for efficient trailer packing, while a standard chip accelerator optimizes performance across various

chip sizes. The service platform next to the engine provides a convenient workspace for routine maintenance.

With two rotor options, the 364T gives operators the flexibility to produce anything from consistent micro-chips to larger 30mm chips, adapting to market demands. CBI's innovative rotor design enables quick swaps, allowing for easy adjustments to chip sizes and seamless adaptation to diverse end markets.

# CHIPMAX 364T

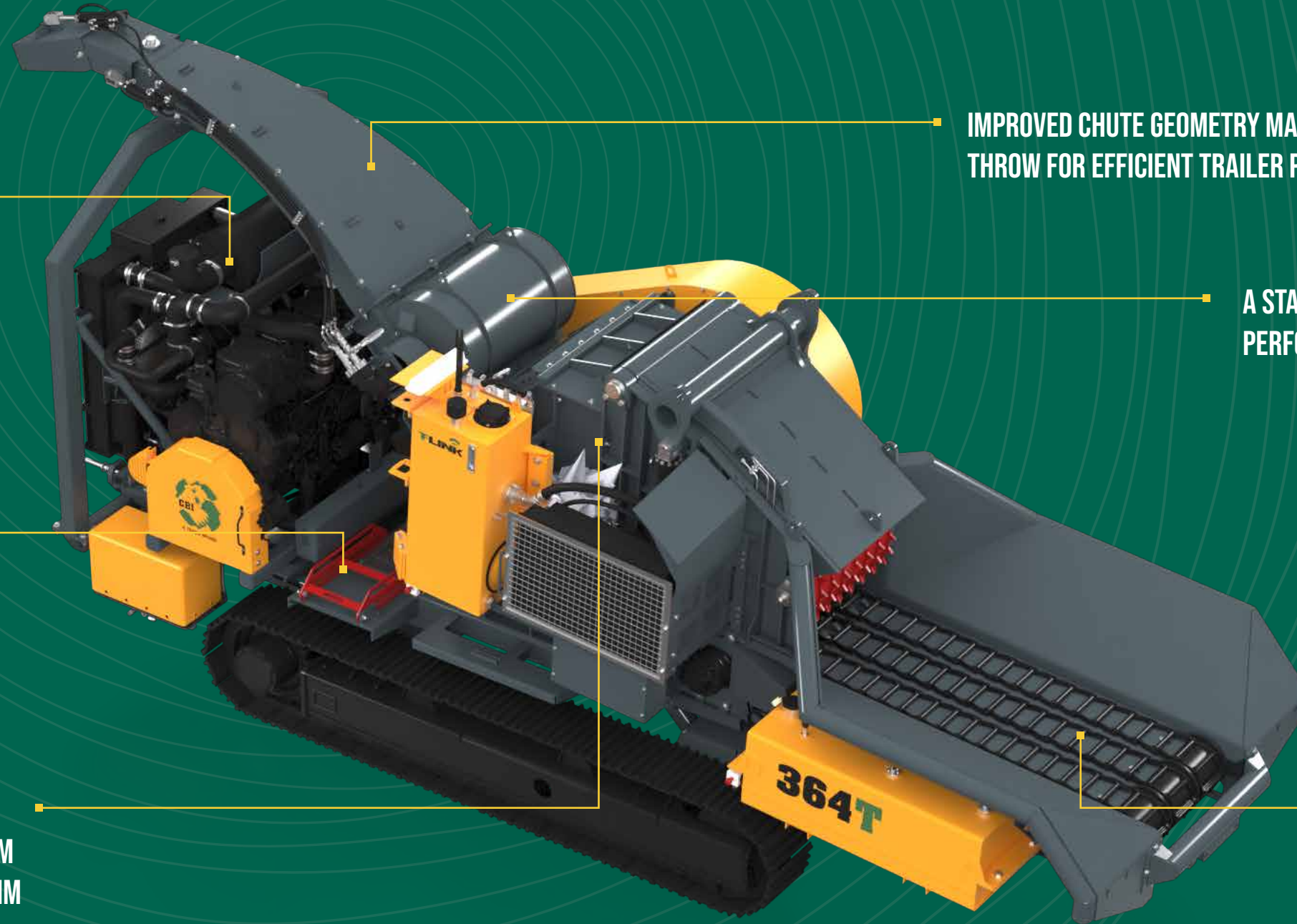
## WHOLE TREE CHIPPER

### KEY FEATURES:

POWERED BY EITHER A 755HP OR 550HP ENGINE, THE CHIPMAX 364T OPERATES AT PEAK EFFICIENCY.

SERVICE PLATFORM FOR OIL CHECKS AND ROUTINE UPKEEP.

OFFERING TWO ROTOR OPTIONS, THE 364T LETS OPERATORS PRODUCE ANYTHING FROM CONSISTENT MICRO-CHIPS TO LARGER 30MM CHIPS, ADAPTABLE TO MARKET DEMANDS.



### APPLICATIONS



LAND CLEARING



BIOMASS PRODUCTION



PULP AND PAPER



FORESTRY & WOOD PROCESSING



MULCH AND LANDSCAPE

IMPROVED CHUTE GEOMETRY MAXIMIZES CHIP THROW FOR EFFICIENT TRAILER PACKING.

A STANDARD CHIP ACCELERATOR OPTIMIZES PERFORMANCE ACROSS VARIOUS CHIP SIZES.



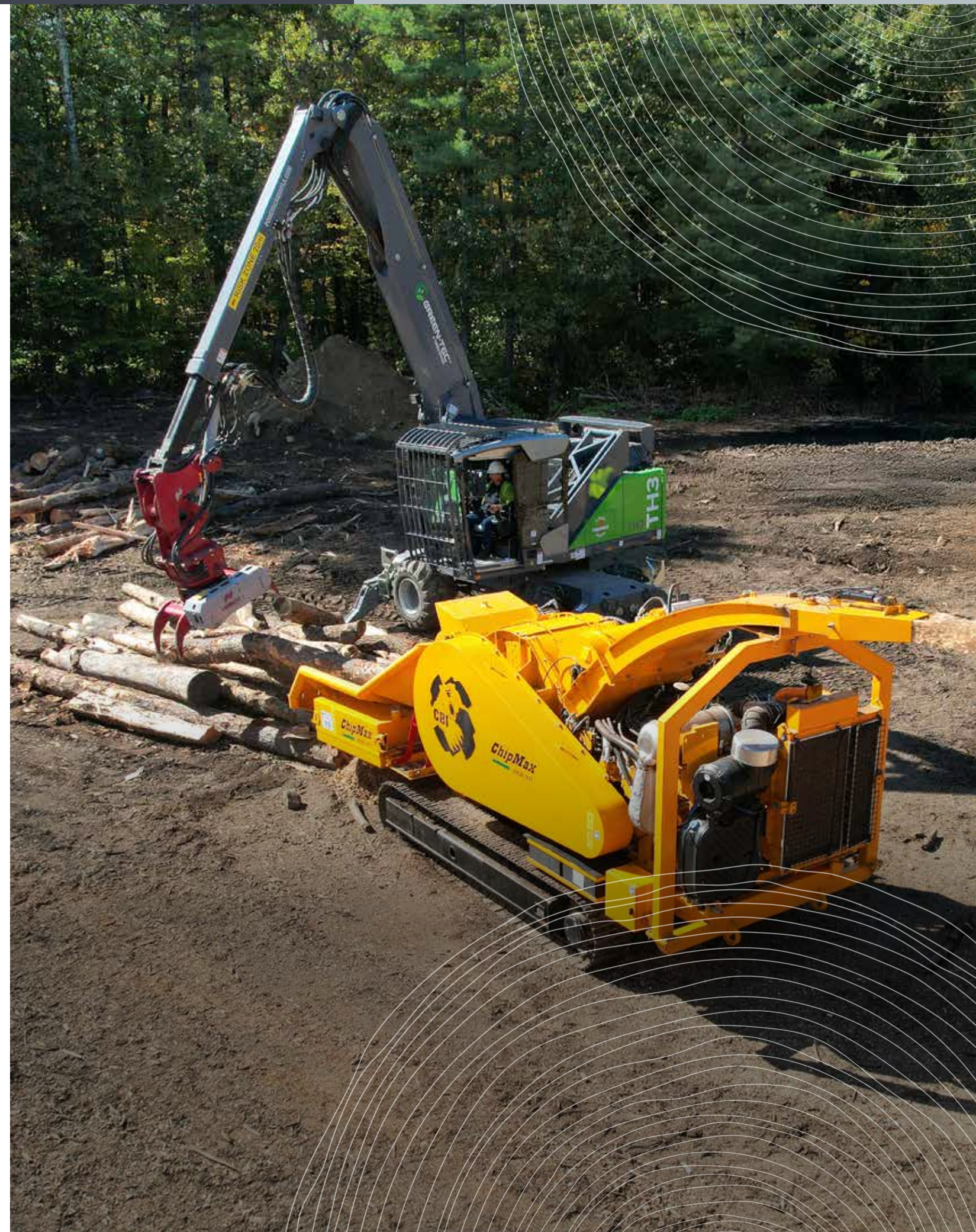
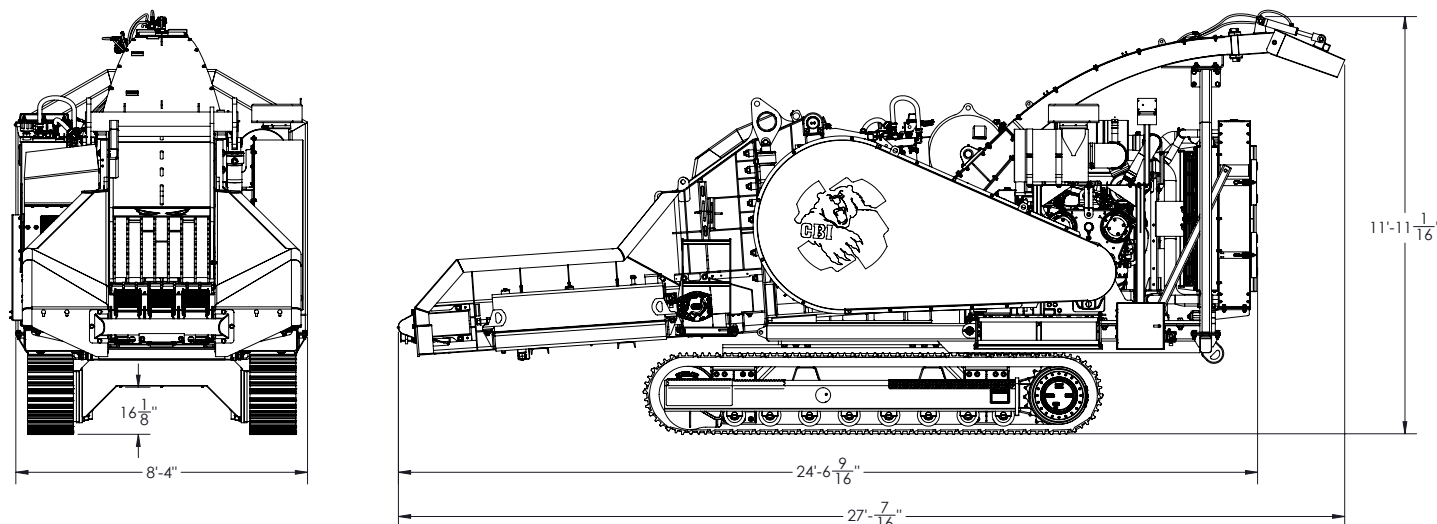
INFEED DESIGNED WITH 5" PITCH CHAIN. BOTTOM FEED ROLL HELPS GUIDE MATERIAL TO THE ROTOR.

# CHIPMAX 364T

## WHOLE TREE CHIPPER

### TECHNICAL DATA

TRANSPORT DIMENSIONS		POWERTRAIN	
Width	8'-4" (2,438mm)	Power Unit	Scania DC13, Tier IV Final/Stage V, 550 HP Scania DC16, Tier IV Final/Stage V, 770HP CAT C18, Tier IV Final, 755HP
Height	12' (3,657mm)	Hydraulics	Open Loop
Length	27'-1" (8,229mm)	Fuel Tank	Dual 105 Gallon Tanks
Weight	44,000lbs	GENERAL	
WORKING DIMENSIONS		Controls	Parker IQAN
Width	8'-4" (2,438mm)	Tracks	Strickland, 400mm
Height	12' (3,657mm)	Rotor	48"D x 36"W
Length	27'-1" (8,229mm)	OPTIONS	
Discharge Height	12' (3,657mm)	Work Lights	
INFEED		Compressor	
Top Feed Roll	26" (685mm)	Bottom Feed Roll	
Width	36" (914mm)	550-755hp Options	
Length	8' (2,438mm)	Tier 2, Tier 4 Final, Stage V Engines	





A TEREX BRAND



The material in this document is for information only and is subject to change without notice.

CBI assumes no liability resulting from errors or omissions in this document, or from the use of the information contained herein. Due to continual product development we reserve the right to change specifications without notice. Product performance figures given in this brochure are for guidance purposes only, this information does not constitute an expressed or implied warranty or guarantee. Results will vary depending on conveyor settings, feed source and types of material being processed.

Images are for illustrative purposes only, some or all of the machines in the illustrations may be fitted with optional extras. Please check with your Dealer for details on optional extras.

CBI is a registered trademark of Terex GB Limited in the United States of America and many other countries.  
Copyright 2025 Terex. Published and Printed in 2025.