

 **TEREX®** | BID-WELL

**3600RC**

# ROLLER PAVER



Road/Flatwork



Bridge



Airport



Highway



Canals

**WORKS FOR YOU.**



# SPECIFICATIONS

## POWER UNIT

Standard	Kohler gasoline EFI engine
Gross horsepower	25 hp / 18.6 kW
Gross Torque	38.8 lb-ft / 52.6 Nm
Cooling	Air
Optional:	Kubota diesel engine 24.8 hp / 18.4 kW

## CARRIAGE

Standard:	Kohler gasoline EFI engine
Optional:	Kubota diesel engine 24.8 hp / 18.4kW
Finishing rollers	Dual 4 ft / 1.20 m
Strike off auger	Dual 8 in/ 20 cm Día.
Rota-Vibe® drum	11.5 in / 29 cm

## MACHINE FRAME

All welded steel frame for maximum strength with minimum weight	
Truss depth	36 in / 91 cm
Standard machine length	36 ft / 11.0 m
Maximum standard length	90 ft / 27.4 m
Engineered width	+ 100 ft / 30.5m
Maximum leg span	87 ft / 26.5 m
Minimum paving width	8 ft / 2.4 m
Maximum paving width	86 ft / 26.1 m

## MACHINE LEGS

Standard heavy duty leg plates	
Leg diameter	6 in / 15 cm
Maximum leg extension range	46 in / 1.16 m

## FLUID CAPACITY

Power unit hydraulics	16.3 gal / 61.70 L
Power unit fuel	16 gal / 60.6 L
Carriage hydraulics	8.0 gal / 30.3 L
Carriage fuel	16 gal / 60.6 L



## CARRIAGE

The 3600 paving carriage performs the functions to help finish your concrete deck or slab to job specifications

- The augers forward of the carriage trim excess concrete
- The patented Rota-Vibe® system consolidates the top 2.75 in / 6.9 cm of concrete
- The paving rollers finish the concrete
- The drag pan system seals and textures the deck

## REMOTE CONTROL & OPERATOR'S CONSOLE

The remote control system (Patent Pending) continues to provide safe operation of the paver while adding convenience and enhanced communication between the operator, team members and the concrete placer. The RC unit controls machine: engine, power legs, machine and carriage travel speed functions and can also control most accessories including power crown adjuster, power crown positioning screw and a standard universal carriage/drag pan fogging (excluding internal concrete vibration), the operator's console is still functional as needed.

## VERSATILITY

The 3600RC is a versatile concrete paving machine. Not only is it capable of efficiently paving bridges, but with the proper accessories can also be used to tack the toughest road paving projects. With a multitude of available accessories, the 3600RC Automatic Roller Paver can be outfitted to meet almost any job specifications.

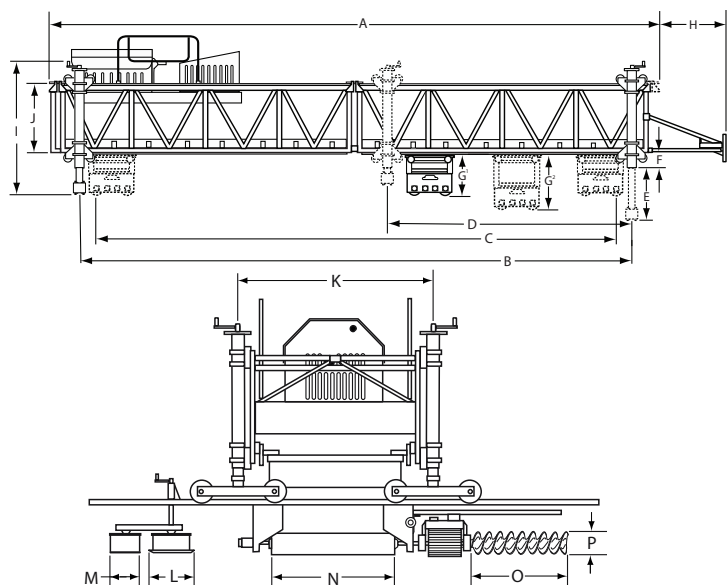
## SETTING THE STANDARD

With paving widths ranging from 8 ft / 2.4m to 86 ft / 26.1 m the Terex Bid-Well 3600RC roller paver is the ideal mid-sized roller paver for bridges, roads and flatwork; however, the 3600 is also a versatile side slope and ditch paver with the DP3600 and SP3600 variations available. This level of versatility is why Terex Bid-Well sets the standard in concrete paving and is just another way Terex, Works For You.



**TEREX®** | **BID-WELL**

## STANDARD 3600RC ROLLER PAVER

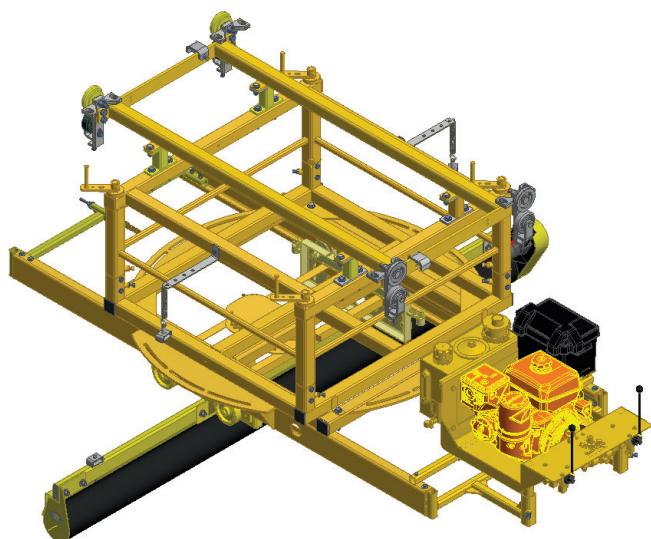


Dimensions			
A	36.5 ft / 11.12 m	I	103" / 2.60 m
B	33.5 ft / 10.21 m	J	36" / 91 cm
C	32.5 / 9.91 m	K	73" / 1.80 m
D	15.25 ft / 4.6 m	L	33 in / 83 cm
E	46 in / 1.16 m	M	19" / 48.2 cm
F	15 in / 38 cm	N	46" / 1.16 m
G <sub>1</sub>   G <sub>2</sub> **	53.5 in / 1.30 m   58.5 in / 1.40 m	O	32 in / 81 cm
H	54 in / 1.37 m	P	8" / 20.3 cm
Weights			
Operating Weight	7,460 lbs / 3,384 kg		
Carriage	2,371 lbs / 1,075.5 kg		
Power Unit	1,275 lbs / 578 kg		
Bogie Wheel (qty 4)	495 lbs / 225 kg		

\*Standard machine is defined as a 36.5 ft / 11.12 m machine consisting of two 18 ft / 5.4 m truss sections, power unit, carriage, four standard power up and down 6 in / 15 cm legs and leg plates. Terex Bid-Well is not responsible for miscalculated wheel load weights based on the above information. For the most current wheel load weight calculators and machine weights please contact the Terex Bid-Well Service Department at 1-800-843-9824. \*\* G<sub>1</sub> represents carriage retracted | G<sub>2</sub> represents carriage extended on cylinder for a stock machine.

## ACCESSORIES

Terex Bid-Well offers a large selection of options and accessories for the 3600RC model roller paver ranging from carriage foggers to weight distribution systems and traffic machine ends for skewed paving. Shown are just a few of the options available for contractors to fit their 3600RC to meet any job specification. For more information on available options and accessories for the 3600RC model roller paver contact your Regional Sales Representative or the Terex Bid-Well Service Department at 1-800-843-9824

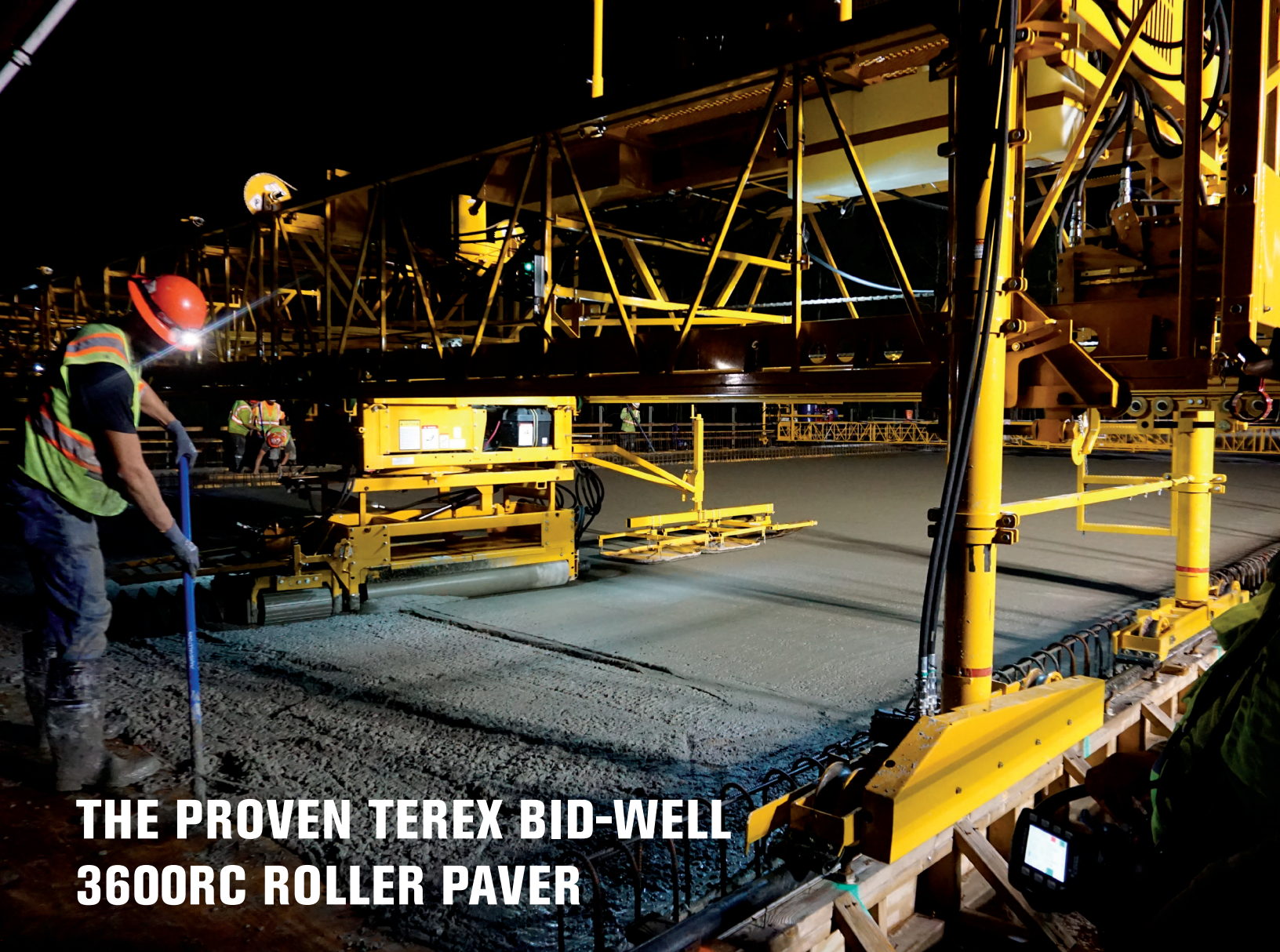


SKEWABLE SIDEWALK PAVER



4 WHEEL TRAVEL DOLLY





# THE PROVEN TEREX BID-WELL 3600RC ROLLER PAVER

**CONTACT OUR OFFICE OR DISTRICT SALES MANAGER FOR MORE INFORMATION**



**E: [Bid-well@terex.com](mailto:Bid-well@terex.com)**

**W: [terex.com/bidwell](http://terex.com/bidwell)**

Effective Date: June 2019. Product specifications and prices are subject to change without notice or obligation. The photographs and/or drawings in this document are for illustrative purposes only. Refer to the appropriate Operator's Manual for instructions on the proper use of this equipment. Failure to follow the appropriate Operator's Manual when using our equipment or to otherwise act irresponsibly may result in serious injury or death. The only warranty applicable to our equipment is the standard written warranty applicable to the particular product and sale and Terex makes no other warranty, express or implied. Products and services listed may be trademarks, service marks or trade-names of Terex Corporation and/or its subsidiaries in the USA and other countries. All rights are reserved. Terex is a registered trademark of Terex Corporation in the USA and many other countries. Copyright 2019 Terex Corporation.



**TEREX® | BID-WELL**