

 **TEREX®** | BID-WELL

**4800RC**

# ROLLER PAVER



Road/Flatwork



Bridge



Airport



Highway



Canals

**WORKS FOR YOU.**



# SPECIFICATIONS

## POWER UNIT

Standard	Kohler gasoline EFI engine
Gross horsepower	25 hp / 18.6 kW
Gross Torque	38.8 lb-ft / 52.6 Nm
Cooling	Air
Optional	Kubota diesel engine (21hp / 15.6 kW)

## CARRIAGE

Standard:	Kohler EFI gasoline engine (25 hp / 18.6 kW)
Optional:	Kubota diesel engine (21hp / 15.6 kW)
Finishing rollers	Dual 5 ft / 1.5 m
Strike off auger	Dual 8 in / 20 cm Diameter
Rota-Vibe® drum	11.5 in / 29 cm

## MACHINE FRAME

All welded steel frame for maximum strength with minimum weight	
Truss depth	48 in / 1.2 m
Standard machine length	36 ft / 10.9 m
Maximum standard length	120 ft / 36.6 m
Engineered width	+ 180 ft / 54.9 m
Maximum leg span	117 ft / 35.7 m
Minimum paving width	12 ft / 3.6 m
Maximum paving width	116 ft / 35 m

## MACHINE LEGS

Standard hydraulically powered machine raising and lowering	
Leg diameter	6 in / 15 cm
Maximum leg extension range	54.5 in / 1.25 m

## FLUID CAPACITY

Power unit hydraulics	16.3 gal / 60.5 L
Power unit fuel	16 gal / 72 L
Carriage hydraulics	13.3 gal / 50 L
Carriage fuel	16 gal / 72 L



## CARRIAGE

The 4800 paving carriage performs four functions to help finish your concrete deck or slab to job specifications:

- The augers forward of the carriage trim excess concrete.
- The patented Rota-Vibe® system consolidates the top 2.75 in / 6.9 cm of concrete
- The paving rollers finish the concrete
- The drag pan system seals and textures the deck

## REMOTE CONTROL & OPERATOR'S CONSOLE

The new remote control system (Patent Pending) continues to provide safe operation of the paver while adding convenience and enhanced communication between the operator, team members and the concrete placer. Even though the RC unit controls machine: engine, power legs, machine and carriage travel speed functions and can also control most accessories including power crown adjuster, power crown positioning screw and a standard universal carriage/drag pan fogging (excluding internal concrete vibration), the operator's console is still functional as needed.

## ANY SITUATION

The 4800 shares the same versatility as the 2450 and 3600 model pavers while providing larger machine spans and more standard accessories. It's capable of paving bridge decks, flatwork, roads, side slopes and highways with minimal set up time and the type of flexibility that is not available with other pavers. The 4800 has also been used for a variety of special applications, such as paving tank bottoms and dam faces. If you have a unique application, let us know and we can design a machine to fit your job specifications.

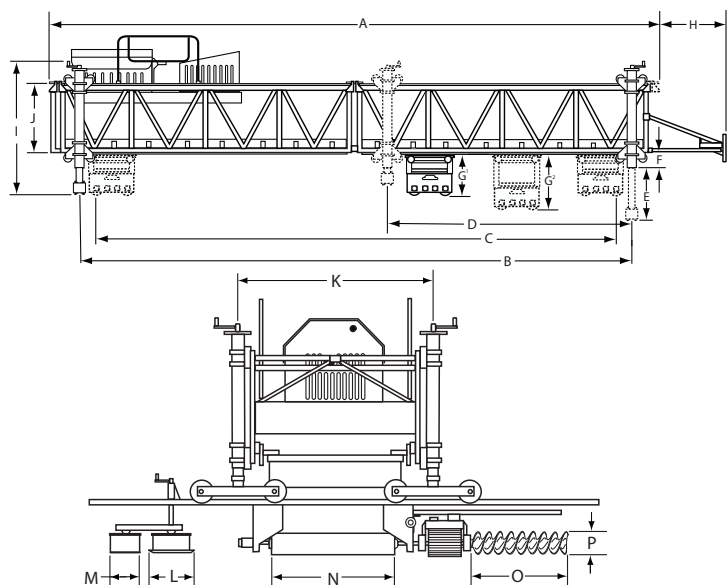
## RAISING THE BAR

If the 4800's standard maximum span of 120 ft / 36.6 m is not long enough to meet your job specifications, the Terex Bid-Well Engineering Department can assist you with a custom machine configuration. With factory consultation, the 4800 is capable of reaching spans well over 180 ft / 54.9 m. This type of configuration is ideal for very large, heavily skewed decks, or paving multiple lanes simultaneously with multiple carriages.



**TEREX® | BID-WELL**

## STANDARD 4800RC ROLLER PAVER

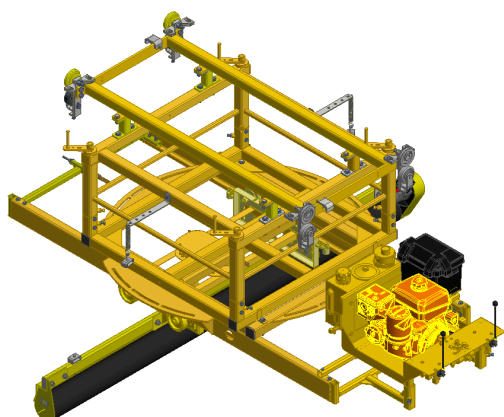


Dimensions			
A	36.5 ft / 11.12 m	I	111 in / 2.8 m
B	33.5 ft / 10.21 m	J	48 in / 1.2 m
C	32.5 / 9.91 m	K	91 in / 2.3 m
D	15.25 ft / 4.6 m	L	33 in / 83 cm
E	54.5 in / 1.38 m	M	19 in / 48 cm
F	15 in / 38 cm	N	60 in / 1.5 m
G <sub>1</sub>   G <sub>2</sub> **	58 in / 1.4 m   63 in / 1.6 m	O	32 in / 81 cm
H	52 in / 1.32 m	P	8 in / 20 cm
Weights			
Operating Weight	10,473 lbs / 4,750.5 kg		
Carriage	3,282 lbs / 1,476 kg		
Power Unit	1,251 lbs / 562 kg		
Bogie Wheel (qty 4)	560 lbs / 252 kg		

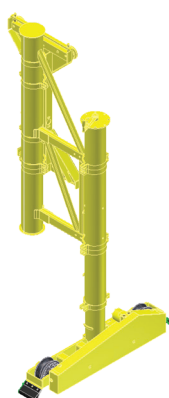
\*Standard machine is defined as a 36.5 ft / 11.12 m machine consisting of two 18 ft / 5.4 m truss sections, power unit, carriage, four standard power up and down 6 in / 15 cm legs and leg plates. Terex Bid-Well is not responsible for miscalculated wheel load weights based on the above information. For the most current wheel load weight calculators and machine weights please contact the Terex Bid-Well Service Department at 1-800-843-9824. \*\* G<sub>1</sub> represents carriage retracted | G<sub>2</sub> represents carriage extended on cylinder for a stock machine.

## ACCESSORIES

Terex Bid-Well offers a large selection of options and accessories for the 4800 model roller paver ranging from power crown adjustment and carriage foggers to weight distribution systems and traffic machine ends for skewed paving. Shown are just a few of the options available for contractors to fit their 4800 to meet any job specification. For more information on available options and accessories for the 4800 model roller paver contact your regional sales representative or the Terex Bid-Well Service Department at 1-800-843-9824.



SKEWABLE SIDEWALK PAVER

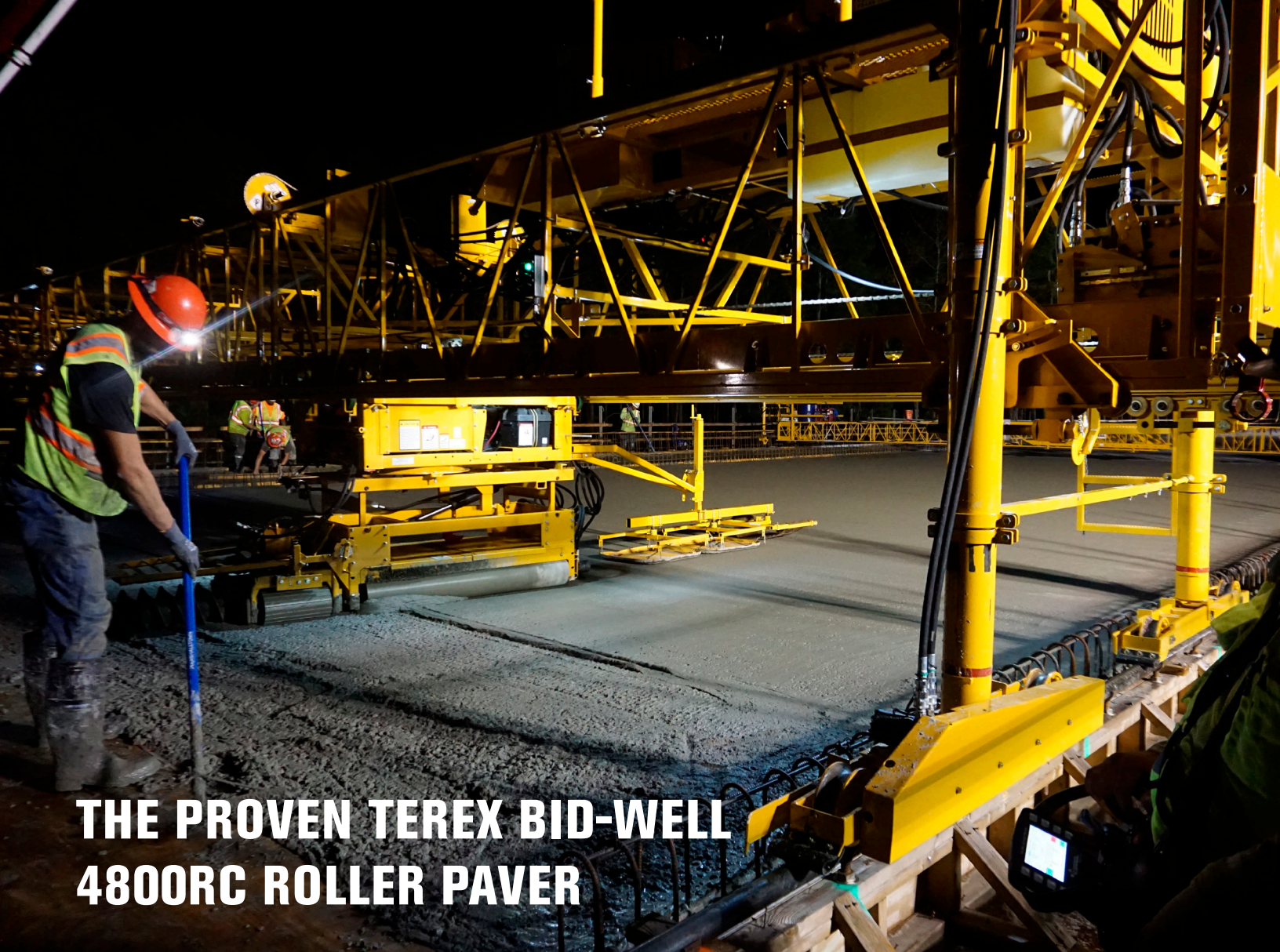


6 IN / 15 CM SWING LEG



4 WHEEL TRAVEL DOLLY





# THE PROVEN TEREX BID-WELL 4800RC ROLLER PAVER

**CONTACT OUR OFFICE OR DISTRICT SALES MANAGER FOR MORE INFORMATION**

**[terex.com/concrete](https://terex.com/concrete)**

Effective Date: January 2019. Product specifications and prices are subject to change without notice or obligation. The photographs and/or drawings in this document are for illustrative purposes only. Refer to the appropriate Operator's Manual for instructions on the proper use of this equipment. Failure to follow the appropriate Operator's Manual when using our equipment or to otherwise act irresponsibly may result in serious injury or death. The only warranty applicable to our equipment is the standard written warranty applicable to the particular product and sale and Terex makes no other warranty, express or implied. Products and services listed may be trademarks, service marks or trade-names of Terex Corporation and/or its subsidiaries in the USA and other countries. All rights are reserved. Terex is a registered trademark of Terex Corporation in the USA and many other countries. Copyright 2018 Terex Corporation.

Terex Bid-Well PO Box 97, Canton, SD 57013 USA  
Tel +1 605 987 2603 Fax +1 605 987 2605



**TEREX® | BID-WELL**