

 **TEREX**® | UTILITIES

# **TRX**SERIES



**BUILT. DIFFERENT.**

**1-844-TEREX-4U**  
**[WWW.TEREX.COM/UTILITIES](http://WWW.TEREX.COM/UTILITIES)**

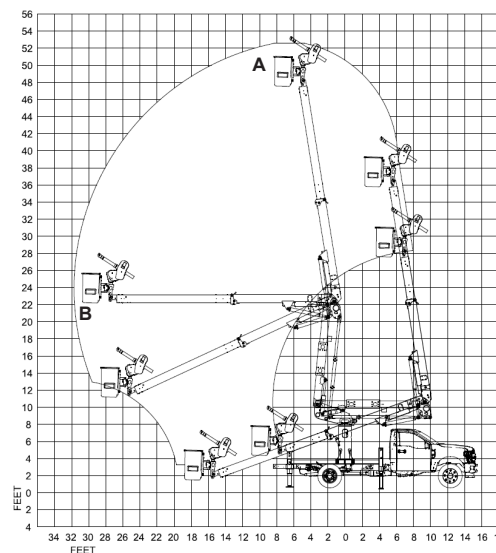
# TRX SERIES



# TEREX® | UTILITIES

The Terex® Hi-Ranger TRX Series offers four lightweight material handling boom configurations. The TRX Series can be mounted on a Class 5 or 6 chassis while maintaining optimal payload capacity. This series has working heights ranging from 46 feet to nearly 60 feet. All models have an industry-leading platform capacity of 500 pounds and a material handling capacity up to 1,000 pounds.

<b>Specifications</b>	<b>TRX41</b>	<b>TRX48</b>	<b>TRX52</b>	<b>TRX55</b>
Working Height (A)	46.3 ft. (14.1 m)	52.6 ft. (16.0 m)	56.5 ft. (17.2 m)	59.6 ft. (18.2 m)
Horizontal Reach (B)	30.2 ft. (9.2 m)	30.8 ft. (9.4 m)	30.8 ft. (9.4 m)	33.6 ft. (10.2 m)
Platform Capacity	500 lbs. (226.8 kg.)	500 lbs. (226.8 kg.)	500 lbs. (226.8 kg)	500 lbs. (226.8 kg)
Material Handling Capacity	1,000 lbs. (453.6 kg)	1,000 lbs. (453.6 kg)	1,000 lbs. (453.6 kg)	1,000 lbs. (453.6 kg)
Lower Boom Articulation	0° to 88°	0° to 84°	0° to 84°	0° to 84°
Upper Boom Travel	-25° to 80°	-25° to 80°	-25° to 80°	-25° to 80°



Graphic shown based on 40-inch frame height as required by ANSI A92.2. Typical super-duty chassis frame height is 32 inches therefore deduct according to truck being used. TRX48 shown in graphic.

## Features

- End-Mounted 24"x 30"x 42" One-Person Platform
- 500 lbs. (226.8 kg) Platform Capacity
- 180° Platform Rotator
- Telescopic/Articulating Aerial Device
- Hydraulic Platform Leveling System
- 4-Function Single Stick Control
- Continuous Unrestricted Worm Gear Rotation
- Category 'C' Rating per ANSI A92.2
- Full Pressure, Open Center Hydraulic System
- Outrigger Motion Alarm and Outrigger Interlocks
- Powder Coat Finish
- Rectangular Bi-Axial Epoxy Resin Filament Wound Fiberglass Boom
- Hydraulic Boom Extension
- 20 Gallon Hydraulic Oil Reservoir
- Engine Start/Stop

## Optional Equipment

- Terex Ranger Jib with up to 1,000 lbs. of Material Handling Capacity
- Side-Mount Jib offering Capacities up to 1,000 lbs.
- Insulated Category 'B' Rating on TRX48/52/55
- Various Side and End-Mount Platforms
- 24" Platform Lifter
- PAL (Positive Attachment Lanyard) System sounds an alarm when the operator engages controls without attaching lanyard
- Boom Overstop Protection
- Boom Storage Warning Light
- Automatic Boom Latch
- Auxiliary Power or Let Down
- WorkForce Power Take Off by Viatec electric PTO

**1-844-TEREX-4U**  
**WWW.TEREX.COM/UTILITIES**  
**BUILT. DIFFERENT.**

