



## Static HSI Crusher

TI5064



A world working better™

 **TEREX.MPS**

# Cedarapids® Static HSI Crusher

## TI5064

With its hydraulic assist apron adjustment for quick setting changes, the TI5064 horizontal shaft impactor is a highly efficient crusher that is easy to operate and easy to maintain.

There are four rear inspection doors plus a hinged side door for inspection access to the rotor, blowbars and aprons. The chamber hydraulically opens for general maintenance and for turning or replacing the blowbars. The quick-release wedge-lock system for a quick and safe blowbars change out.

### Standard Features

- Inlet Opening: 65.5" x 39" (1665mm x 994mm)
- Rotor Diameter: Ø50" (Ø1270mm)
- Rotor Width: 64" (1626mm)
- Hydraulic assist apron adjustment
- Patented hydraulic overload protection on both aprons
- Fabricated crusher body built for heavy-duty crushing
- Hinged hood hydraulically opens providing easy access for blowbar extraction, apron inspection, and other critical maintenance tasks
- Heavy duty cast 4 bar rotor with reversible blowbars and with a wedge lock system to retain the blowbars
- Vertical lift blowbar removal from rotor
- Multiple blowbar metallurgies are available to suit various feed materials and applications.
- Onboard rotor bearing mounting plinth for precision bearing alignment
- Freestanding electrically driven hydraulic power pack with associated hydraulic piping for apron adjustment and hydraulic overload protection
- Cast manganese primary apron with a replaceable 500HB wear-resistant tip
- Heavy duty fabricated secondary aprons featuring 500 HB wear resistant tile plates
- Built in dust suppression atomising nozzles at crusher inlet

Replaceable bolt-in side wall liner plates, made from wear resistant steel plate.

Individually hung, easy straight lift extraction, inlet opening rubber curtains, and heavy linked drop chain.

Feed in chute, fully lined with replaceable wear resistant steel plate comes with a rotatable and replaceable feed inlet beam.

Rotor features a steel through-shaft supported by heavy-duty, self-aligning spherical roller bearings. Bearings are equipped with robust labyrinth grease seals and mounted on the crusher mainframe platform for maximum stability.

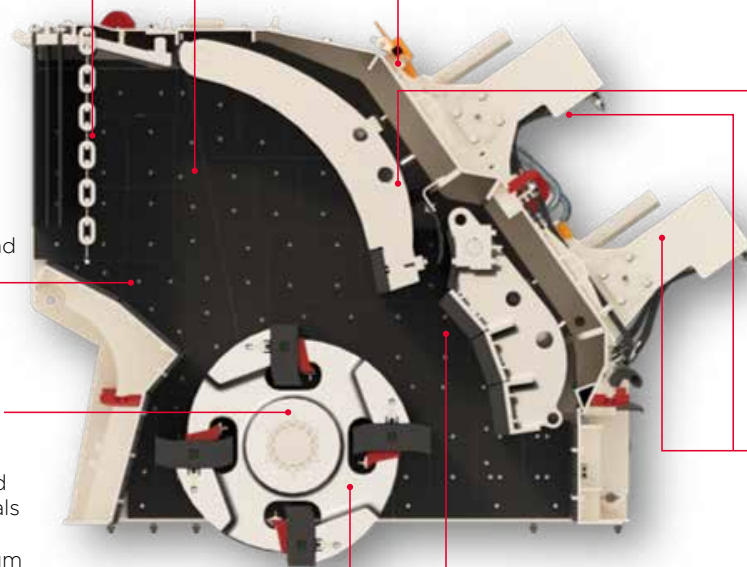
Heavy duty cast steel 4 bar rotor, standard is two up-two down (2hi/2lo) arrangement with 4 up (4hi) optional. Wide array of blowbar metallurgy to suit various applications.

A lifting cradle for easy and safe blowbar extraction is supplied as standard and mounted onboard.

Heavy duty cast Manganese Primary Apron with replaceable bolt-on wear resistant steel tip liner

Primary and secondary apron hydraulic overload protection & setting hydraulic assist cylinders.

Fabricated secondary apron with tile patterned replaceable wear plates across the entire curtain.



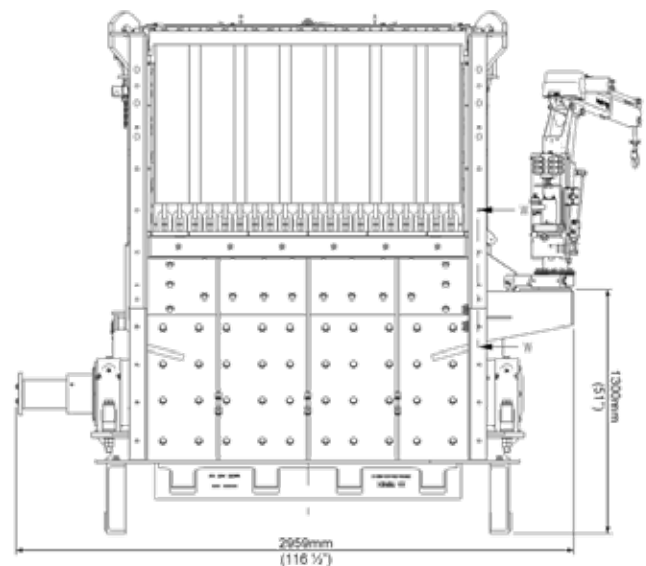
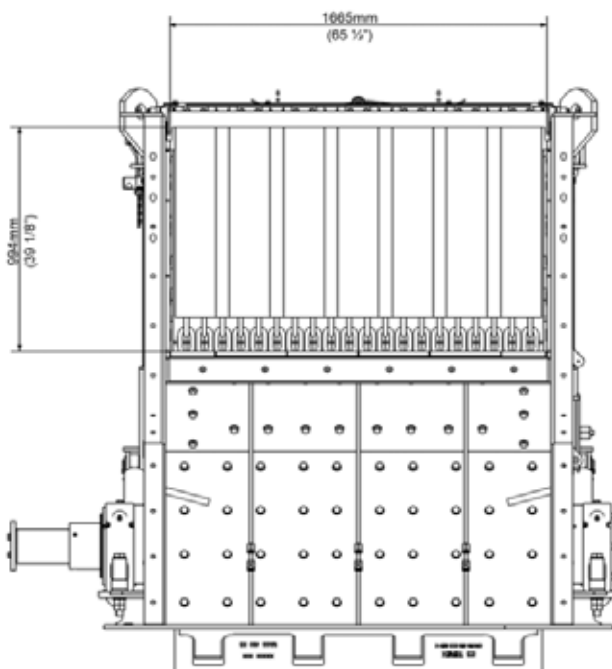
- Rotor tip speed range: 5,000-8,500 fpm (24-44 m/s)
- Maximum apron settings: 6" (150mm) primary & 3" (75mm) secondary
- Minimum apron settings: 2" (50mm) primary & 3/4" (20mm) secondary
- 3/4" (20mm) thick 500HB wear resistant side wall liners
- Rotor through shaft supported by 2x Heavy Duty self aligning spherical roller bearings sealed with grease purged labyrinth seals
- Can be used in a vast array of applications from demolition to quarry
- Maximum recommended feed size to the crusher, pending feed material characteristics and blowbar metallurgy: 30" (750mm) cubed rock and 40"x24"x10" (1,000x600x250mm) concrete slab

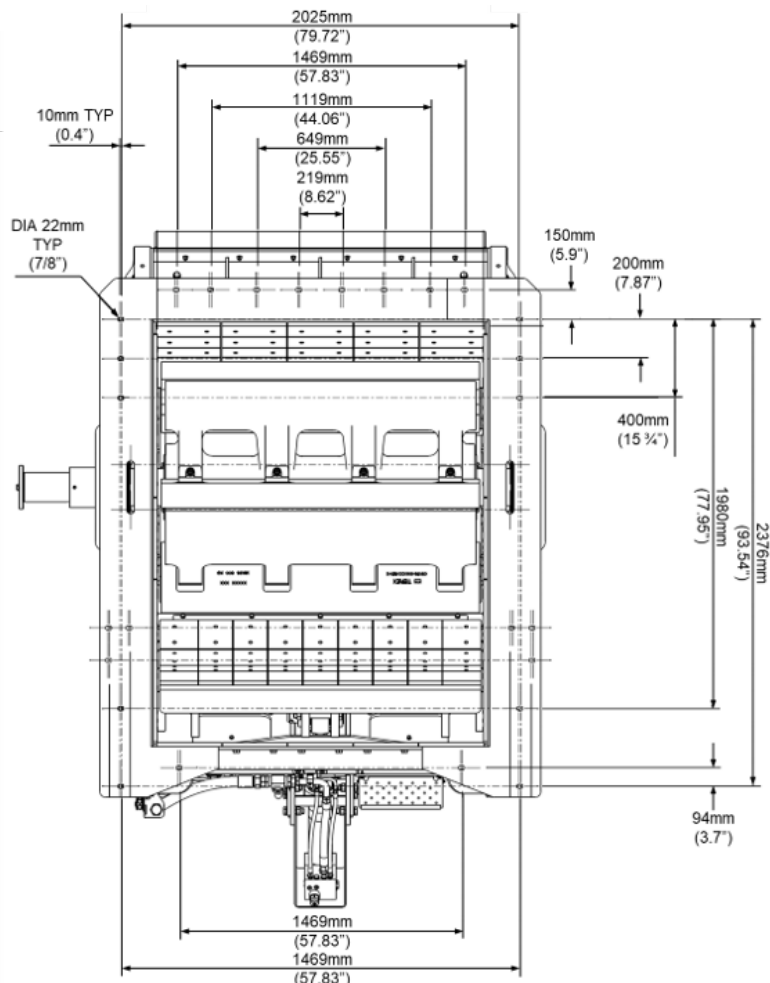
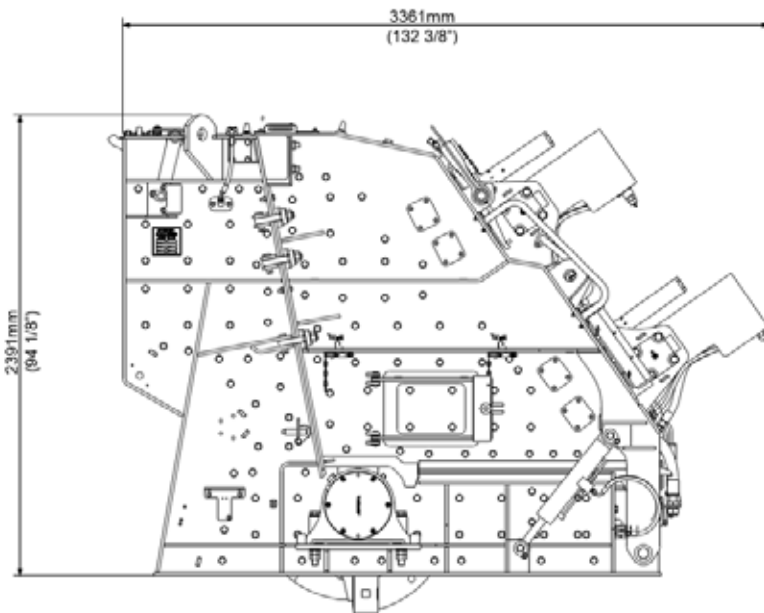
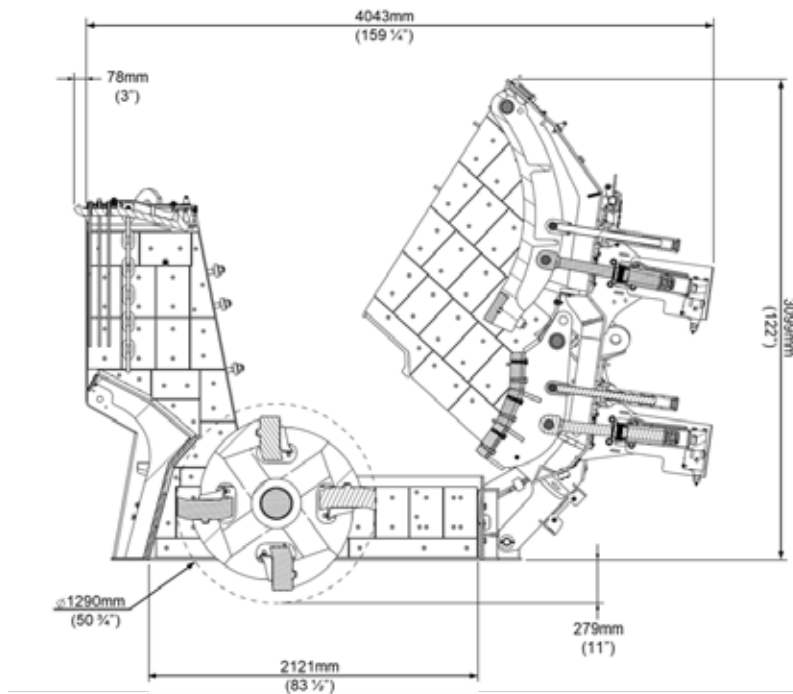
## Optional Equipment

- 3rd Apron (Grinding path) with hydraulic assist adjustment
- Available blowbar metallurgy options is dependent on application:
  - Martensitic
  - Medium Chrome
  - High Chrome
  - Tough Chrome
  - Martensitic Ceramic
  - High Chrome Ceramic
- Crusher mounted blowbar jib crane
- Two up-two down rotor configuration

TI5064	Imperial	Metric
Max motor power	450 hp	335kW
Rotor speed range	406-662rpm	
Adjustment of aprons	Hydraulic assist	
Overload protection	Hydraulic	
Basic crusher weight	27,397 lbs	19,500 kg
Maximum feed size (cubed dimension)	30"	750 mm

## Dimensional Drawings





[www.terex.com/cedarapids](http://www.terex.com/cedarapids)  
[Cedarapids.Marketing@Terex.com](mailto:Cedarapids.Marketing@Terex.com)

Product specifications and prices are subject to change without notice or obligation. The photographs and/or drawings in this document are for illustrative purposes only. Refer to the appropriate Operator's Manual for instructions on the proper use of this equipment.

Failure to follow the appropriate Operator's Manual when using our equipment or failure to act responsibly may result in serious injury or death.

The only warranty applicable to our equipment is the standard written warranty applicable to the particular product and sale, and Terex makes no other warranty, express or implied. Terex, the Terex Crown design, Cedarapids, Canica, Simplicity, Jaques, El-Jay and Rollercone are trademarks of Terex Corporation or its subsidiaries. All rights are reserved. © Dec 2025