

Specifications

Models	Z-45 HF	
Measurements	US	Metric
Working height maximum*	51 ft 6 in	15.86 m
Platform height maximum	45 ft 6 in	13.86 m
Horizontal reach maximum	24 ft 9 in	7.55 m
Up and over clearance maximum	24 ft 5 in	7.44 m
A Platform length	2 ft 6 in	0.76 m
B Platform width	6 ft	1.83 m
C Height - stowed	7 ft 4 in	2.25 m
D Length - stowed	21 ft 10 in	6.65 m
E Width	8 ft 5 in	2.57 m
F Wheelbase	6 ft 8 in	2.03 m
G Ground clearance - center	14.8 in	0.37 m

Productivity

Maximum lift capacity	600 lb	272 kg
Platform rotation	160°	
Vertical Jib rotation	133°	
Turntable rotation	355° non-continuous	
Turntable tailswing	zero	
Drive speed - stowed	4.5 mph	7.24 km/h
Drive speed - raised **	0.61 mph	0.98 km/h
Gradeability - 4WD - stowed***	45%	
Tilt sensor activation	front to back: 4.5° and side to side: 4.5°	
Turning radius - inside	5 ft 6 in	1.68 m
Turning radius - outside	14 ft 9 in	4.50 m
Controls	12 V DC proportional	
Tires	33/16LL 500, 10 ply, 19.5 in wheel	

Power

Power source	49 hp (36.5 kW) Deutz D2.9L4 diesel T4f 48 hp (35.8 kW) Perkins 404F-E22T diesel T4f	
Auxiliary power unit	12 V DC	
Hydraulic tank capacity	22 gal	83 L
Fuel tank capacity	17 gal	64.4 L

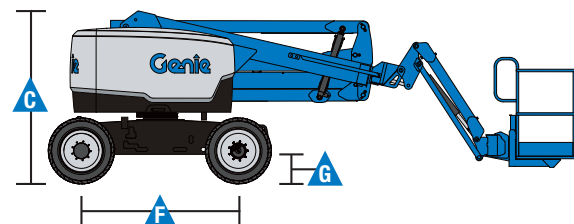
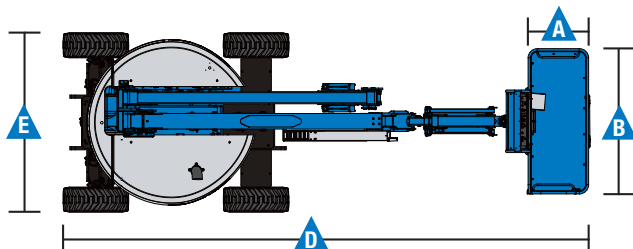
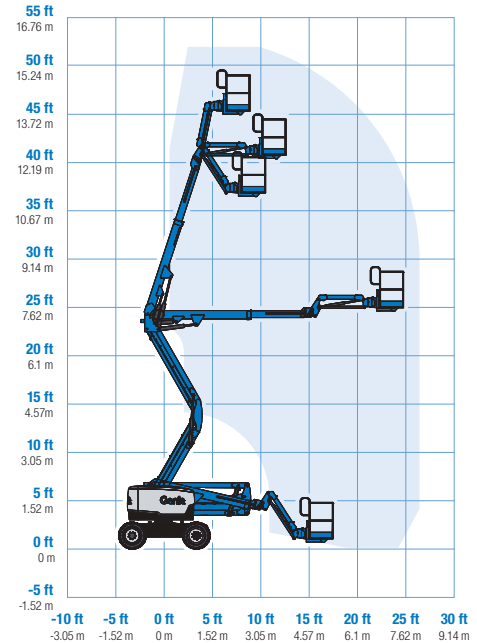
Weight****

4WD	16,050 lb	7,280 kg
-----	-----------	----------

Standards Compliance

ANSI A92.20 and CSA B354.6

Range Of Motion Z-45 HF



* The metric equivalent of working height adds 2 m to platform height. U.S. adds 6 ft to platform height.

** In lift mode (platform raised), the machine is designed to operate on firm, level surfaces only.

*** Gradeability applies to driving on slopes. See operator's manual for details regarding slope ratings.

**** Weight will vary depending on options and/or country standards.

Features

Standard Features

Measurements

Z-45 HF

- 51 ft 6 in (15.86 m) working height
- 24 ft 9 in (7.55 m) horizontal reach
- 24 ft 5 in (7.44 m) up and over clearance
- 600 lb (272 kg) lift capacity

Productivity

- High flotation air filled tires
- 5 ft (1.52 m) jib boom
- 4WD
- Active oscillation
- Self-leveling platform
- Steel 6 ft (1.83 m) dual entry with side swing gate
- 160° Hydraulic platform rotation
- Proportional joystick controls
- Drive enable
- AC power cord to platform
- Alarm package: Flashing beacon and travel alarm
- Horn
- Hour meter
- Tilt alarm
- Descent alarm
- Flashing beacons and travel alarm
- 355° non-continuous turntable rotation
- Positive traction drive
- Two speed wheel motors
- Lift Tools™ Work Tray
- Platform entry toeboard
- Lift Guard™ Contact Alarm
- Dual parallelogram for vertical wall tracking
- Platform load sense
- Lift Connect Telematics

Power

- 12 V DC auxiliary power
- Intake air heater (Deutz engine only)

Easily Configured To Meet Your Needs

Engine Options

- 49 hp (36.5 kW) Deutz T4f diesel (standard)
- 48 hp (35.8 kW) Perkins 404F-E22T T4f diesel

Options & Accessories

Productivity

- Lift Power™
 - 3 kW AC Generator
 - 12 kW 240 V / 60 Hz Welder Ready package
 - 12 kW Welder Equipped, Select Lincoln or Miller (12 kW options include a fire extinguisher and fireproof sleeves)
- Lift Guard Platform Mesh - Half
- Lift Guard Platform Mesh - Full
- Platform top auxiliary rail
- Air line to platform
- Thumb rocker steer
- Specialty hydraulic oil (Cold weather, fire resistant, or biodegradable)
- Hostile environment kit
- Lockable platform control box cover
- Tow package
- Work light package
- Operator Protective Structure*
- Fall Arrest Bar
- Positive air shut off system (Deutz engine only)
- Fluorescent tube caddy*
- Pipe cradle (pair)*

Power

- Cold Weather Packages



* Available through aftermarket parts only

Genie United States

6464 185th Ave. NE
Redmond, WA 98052
Telephone +1 (425) 881-1800
Toll Free in USA/Canada +1 (800)-536-1800
Fax +1 (425) 883-3475

Distributed By:

Effective Date: January, 2020. Product specifications and prices are subject to change without notice or obligation. The photographs and/or drawings in this document are for illustrative purposes only. Refer to the appropriate Operator's Manual for instructions on the proper use of this equipment. Failure to follow the appropriate Operator's Manual when using our equipment or to otherwise act irresponsibly may result in serious injury or death. The only warranty applicable to our equipment is the standard written warranty applicable to the particular product and sale and we make no other warranty, express or implied. Products and services listed may be trademarks, service marks or trade names of Terex Corporation and/or their subsidiaries in the USA and many other countries. Terex, Genie and AWP are registered trademarks of Terex Corporation or its subsidiaries. © 2020 Terex Corporation.