

### Specifications

Models	Z-34/22 DC	
Measurements	US	Metric
Working height maximum*	40 ft 6 in	12.52 m
Platform height maximum	34 ft 6 in	10.52 m
Horizontal reach maximum	22 ft 3 in	6.78 m
Up and over clearance maximum	15 ft	4.57 m
<b>A</b> Platform length	2 ft 6 in	0.76 m
<b>B</b> Platform width	4 ft 8 in	1.42 m
<b>C</b> Height - stowed	6 ft 7 in	2.00 m
<b>D</b> Length - stowed	18 ft 6 in	5.64 m
<b>E</b> Storage height	7 ft 5 in	2.26 m
<b>A</b> Storage length	13 ft 5 in	4.08 m
<b>A</b> Width	5 ft 8 in	1.73 m
<b>A</b> Wheelbase	6 ft 2 in	1.88 m
<b>A</b> Ground clearance - center	6 in	0.15 m

### Productivity

Lift capacity	500 lb	227 kg
Platform rotation	180°	
Vertical jib rotation	139°	
Turntable rotation	355° non-continuous	
Turntable tailswing	zero	
Drive speed - stowed	4.0 mph	6.4 km/h
Drive speed - raised**	.68 mph	1.1 km/h
Gradeability - stowed***	30%	
Tilt sensor activation	front to back: 4.5° and side to side: 4.5°	
Turning radius - inside	5 ft 9 in	1.75 m
Turning radius - outside	13 ft 1 in	4 m
Controls	24V DC proportional / 2 speed	
Tires - air filled	9 x 14.5 in	

### Power

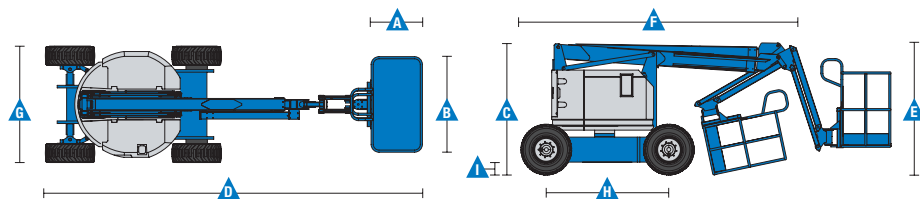
Power Source	48V DC (eight 6 V batteries 315 Ah capacity)	
Auxiliary Power Unit	24V DC	
Hydraulic Tank Capacity	4 gal	15.1 L
Fuel Tank Capacity	_____	_____

### Weight\*\*\*\*

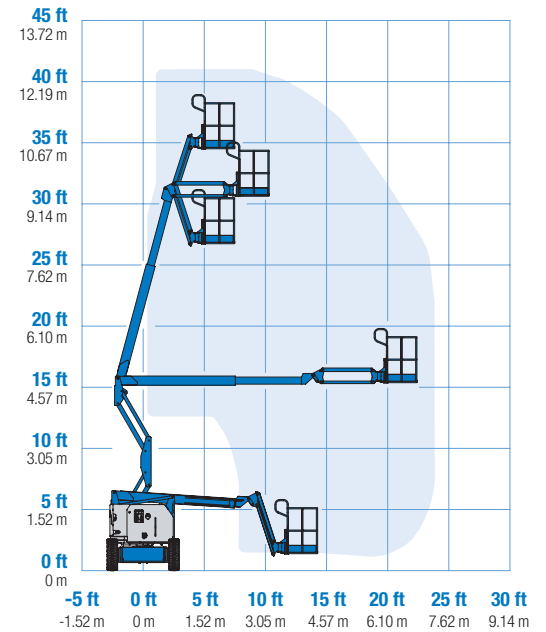
	11,420 lb	5,180 kg
--	-----------	----------

### Standards Compliance

ANSI A92.20, CSA B354.6, EN 280, AS 1418.10



### Range Of Motion Z-34/22 DC



\* The metric equivalent of working height adds 2 m to platform height. U.S. adds 6 ft to platform height.  
 \*\* In lift mode \*(platform raised), the machine is designed to operate on firm, level surfaces only.  
 \*\*\* Gradeability applies to driving on slopes. See operator's manual for details regarding slope ratings.  
 \*\*\*\* Weight will vary depending on options and/or country standards.

### Features

#### Standard Features

##### Measurements

- 40 ft 6 in (12.52 m) working height
- 22 ft 3 in (6.78 m) horizontal reach
- 15 ft (4.57 m) up and over clearance
- Up to 500 lb (227 kg) lift capacity

##### Productivity

- 4 ft (1.22 m) jib boom with 139° working range
- Self-leveling platform
- Hydraulic platform rotation
- Proportional joystick controls
- Thumb rocker steer
- Drive enable
- AC power to platform
- Alarm package: flashing beacon and travel alarm
- Horn
- Hour meter
- Tilt alarm
- Descent alarm
- Zero tailswing
- 355° non-continuous turntable rotation
- Lift Guard™ Contact Alarm
- Dual parallelogram for vertical wall tracking
- Lift Connect™ Telematics
- Platform load sense

##### Power

- 48V deep cycle battery pack
- 24V DC auxiliary power
- Universal 30A battery smart charger

#### Easily Configured To Meet Your Needs

##### Platform Options

- Steel 4 ft 8 in (1.42 m) with sliding mid-rail (standard)
- Steel 3 ft 10 in (1.17 m) with sliding mid-rail

##### Jib

- 4 ft (1.22 m) jib boom

##### Power

- 48V DC power source

##### Drive

- 2WD

##### Tire Options

- Industrial foam-filled (standard)
- Industrial non-marking foam-filled

#### Options & Accessories

##### Productivity Options

- Platform swing gate
- Lift Guard Platform Mesh - Half
- Lift Guard Platform Mesh - Full
- Platform top auxiliary rail\*\*
- Air line to platform
- Specialty hydraulic oil (Cold weather, fire resistant or biodegradable)
- Aircraft protection package\*
- Hostile environment kit
- Light package
- Florescent tube caddy\*\*\*
- Pipe cradle (pair)\*\*\*

##### Power Options

- AGM batteries
- EE UL583 Fire Protection rating
- Battery charge indicator (BCI)
- Low voltage interrupt with BCI
- 800 watt 120 V AC power inverter



\* Derates load capacity to 440lb. Not available with other platform options.

\*\* Not available with swing gate or half height mesh

\*\*\* Available through aftermarket parts only

#### Genie United States

6464 185th Ave. NE  
Redmond, WA 98052  
Telephone +1 (425) 881-1800  
Toll Free in USA/Canada +1 (800)-536-1800  
Fax +1 (425) 883-3475

#### Distributed By: