

FRANNA CRANES

All Terrain Lift & Carry Mobile Crane



Mobile – Versatile

This is the first Allterrain Articulated Lift and Carry Mobile Crane, fully designed and built in Australia. It is ideal for general hire and site work.

Adaptable, manoeuvrable, and versatile this 4 W.D. Crane can work on difficult and rugged terrain as well as travel at speeds up to 85km/h on the highway.

The Franna 4 W.D. Crane is safe, reliable and the most robust Crane on the market.

Spare parts present no problem because of the simply brilliant design which uses mainly conventional truck components. For specialised parts, our two manufacturing plants in Brisbane and Perth and our agents in each State have plentiful supplies.



Large zone tinted front windscreen.
Hydraulic winch with full hook compensation. 40mm thick steel front plate with recessed head/blinker light.
Synchronised power boom extension $\frac{2}{3}$ part hook block. Boom Head dimensions minimised for maximum clearance for machinery installation etc.



600 litre front mounted sling and tackle compartment, with opening top and front doors for ease of access.
Wide stance boom lift cylinders provide maximum operator vision.
Heavy duty steel front and rear bodies incorporating heavy duty checker plate mudguards.



40° each side of centre providing a total 80° of slewing arc. The provision of an exclusive park brake attachment allows the operator to slew the crane through 80° whilst the crane is stationary and the parking brake activated.

Sound proofed, roll over protection operator cabin with forward opening doors with full length tinted windows for ease of entry and vision.

Instrument cluster and controls are positioned for ease of operation.

Heater demister.

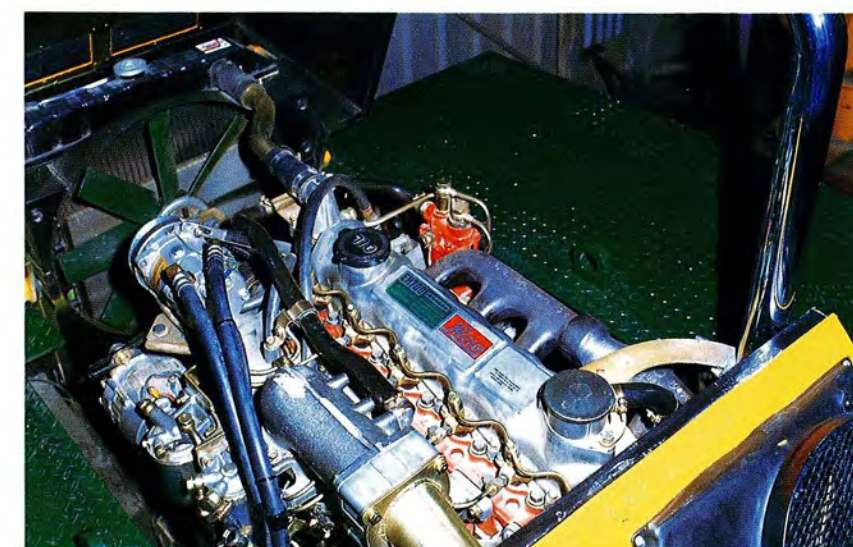
Bostrom seats.

2 speed windscreen wipers.

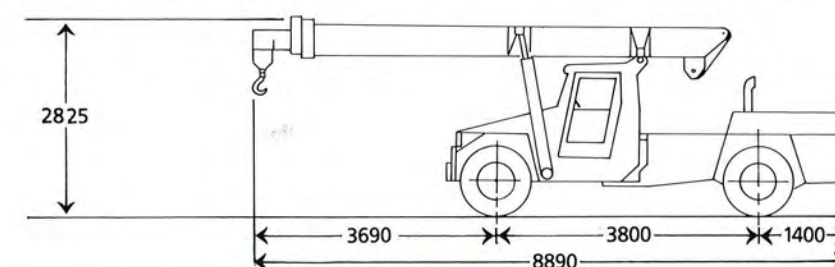
Windscreen washers.

Roof and rear windows are tinted.

Full power orbital steering.



Total engine cover is hinged to open rearward for maximum access to 163 HP diesel engine and service points. Upswept exhaust for minimum noise levels.



FRANNA CRANES

Specifications for 10 tonne model

RATED CAPACITY

10 Tonnes at 1.7m Radius
0.5 Tonnes at 14.5m Radius
Hook Height 16 metres
Lift Hook block 7.5 Tonnes
Single Line 2.5 Tonnes

AXLE LOADINGS

Front Axle 5500kg
Rear Axle 8500kg
TOTAL 14,000kg

TURNING CIRCLE

Outside Wheels 6.2 metres

DIMENSIONS

Overall Length 8.89 metres
Overall Width 2.40 metres
Overall Height 2.82 metres

HYDRAULIC WINCH

Line pull with full drum 2.5 T 3/2
part fall block or single line, fully
compensated hook height.

CABIN

ROPS Type insulated lock up cabin.

ENGINE

Hino, 163 HP, 6 Cylinder diesel
engine.

GEARBOX

Six (6) speed synchromesh.

TRANSFER CASE

Two (2) speed AIRSHIFT with AIR
SHIFT disconnect to REAR wheels.

DRIVE AXLES

Front and rear heavy duty drive
axles.

DRIVE SHAFTS

Hardy Spicer Series 1610.

BRAKES

Full air S cam Twin Circuit Brakes
front & rear axle. Spring applied
on rear axles, crane operation hold
brake on front wheel.
Engine exhaust brake.

TYRES

1100 x 20 x 14 PR Duals.

STEERING

Full Power ORBITROL with twin
Hydraulic double acting rams, main
pump supply plus electro hydraulic
emergency supply.

HYDRAULIC PUMP

Load sensing axial piston
115 Litre/min.

SUSPENSION

Two (2) Semi elliptic springs on each
axle plus TORSION BAR on front
axle for stability.

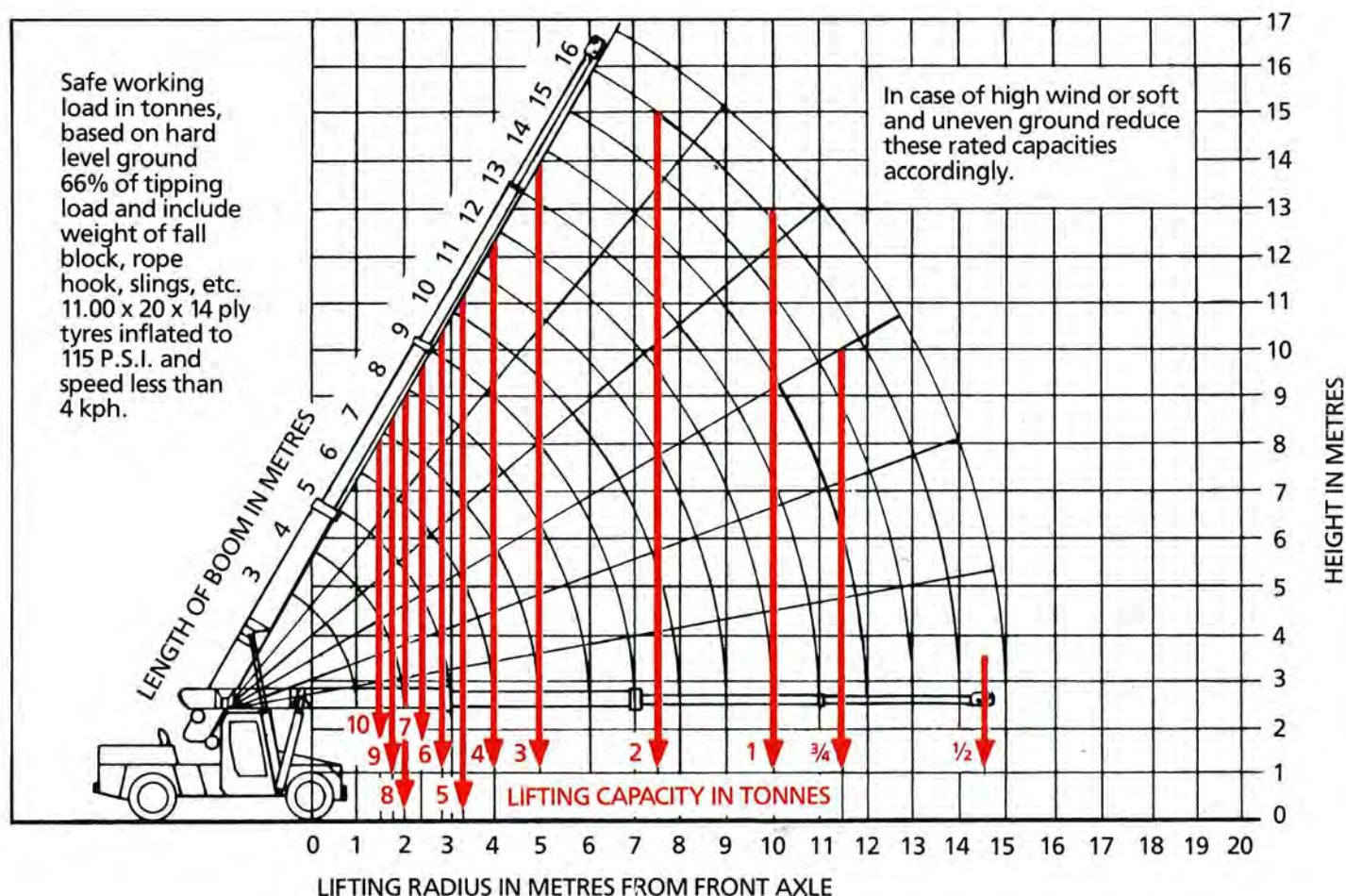
PERFORMANCE

Maximum — 85 KPH
Gradability — 50%

OPTIONAL EQUIPMENT

- Allison Automatic Gearbox
- 16.5R x 22.5 Supersingle Low
Profile Tyres
- Air Conditioning
- Machinery Hook
- Spare wheel carrier
- Work Lights
- Boom head mounted Rhino
Hook
- Others on Application

* Specifications subject to change without
notice.



Specifications for 12 tonne model

RATED CAPACITY

12 Tonnes at 1.6m Radius
1 Tonne at 15.5m Radius
Hook Height 16 metres
Lift Hook block 7.5 Tonnes
Single Line 2.5 Tonnes

AXLE LOADINGS

Front Axle 5700 kg
Rear Axle 9000 kg
TOTAL 14,700 kg

TURNING CIRCLE

Outside Wheels 6.2 metres

DIMENSIONS

Overall Length 8.89 metres
Overall Width 2.40 metres
Overall Height 2.82 metres

HYDRAULIC WINCH

Line pull with full drum 2.5 T 3/2
part fall block or single line, fully
compensated hook height.

CABIN

ROPS Type insulated lock up cabin.

ENGINE

Hino, 163 HP, 6 Cylinder diesel
engine.

GEARBOX

Six (6) speed synchromesh.

TRANSFER CASE

Two (2) speed AIRSHIFT with AIR
SHIFT disconnect to REAR wheels.

DRIVE AXLES

Front and rear heavy duty drive axles.

DRIVE SHAFTS

Hardy Spicer Series 1610.

BRAKES

Full air S cam Twin Circuit Brakes
front & rear axles. Spring applied
on rear axle, crane operation hold
brake on front wheel.
Engine exhaust brake.

TYRES

1100 x 20 x 16 PR Duals.

STEERING

Full Power ORBITROL with twin
Hydraulic double acting rams, main
pump supply plus electro hydraulic
emergency supply.

HYDRAULIC PUMP

Load sensing axial piston
115 Litre/min.

SUSPENSION

Two (2) Semi elliptic springs on each
axle plus TORSION BAR on front
axle for stability.

PERFORMANCE

Maximum — 85 KPH
Gradability — 50%

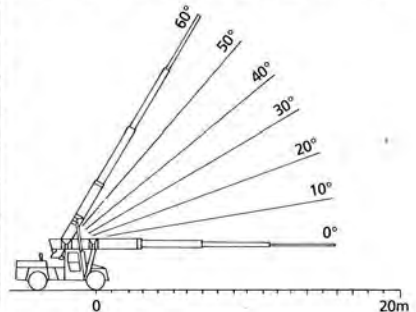
OPTIONAL EQUIPMENT

- Allison Automatic Gearbox
- 16.5R x 22.5 Supersingle Low
Profile Tyres
- Air Conditioning
- Machinery Hook
- Spare wheel carrier
- Work Lights
- Boom head mounted Rhino
Hook
- Others on Application

* Specifications subject to change without
notice.

Loads on firm level ground, tyres 1100 x 20 x 16 ply inflated to 116 PSI, weight of hooks, blocks, slings & chains etc. included.

BOOM ANGLE	BOOM LENGTH IN METRES — MANUAL EXTENSION RETRACTED — LOADS IN TONNES																	MANUAL EXT. EXTENDED	
	5.5	6.0	6.5	7.0	7.5	8.0	8.5	9.0	9.5	10.0	10.5	11.0	11.5	12.0	12.5	13.0	13.5	3M	4M
60°			7.5	7.5	7.5	7.5	7.5	7.0	6.0	5.7	5.2	4.8	4.4	4.1	3.8	3.6	3.3	2.3	2.0
50°	7.5	7.5	7.5	7.5	7.5	7.0	6.5	5.5	5.0	4.7	4.2	3.9	3.6	3.3	3.0	2.8	2.6	1.8	1.6
40°	7.5	7.5	7.5	6.75	6.0	5.25	4.75	4.25	4.0	3.5	3.25	3.0	2.75	2.7	2.5	2.3	2.2	1.6	1.4
30°	7.5	7.25	6.25	5.5	4.75	4.25	4.0	3.5	3.25	3.0	2.75	2.5	2.25	2.25	2.0	1.9	1.8	1.3	1.2
20°	7.25	6.25	5.5	4.75	4.25	3.75	3.5	3.0	2.75	2.5	2.25	2.25	2.0	1.75	1.75	1.5	1.5	1.2	1.1
10°	6.75	5.75	5.0	4.5	4.0	3.5	3.25	2.75	2.5	2.5	2.25	2.0	1.75	1.75	1.5	1.5	1.4	1.1	1.0
0°	6.5	5.75	5.0	4.25	3.75	3.5	3.0	2.75	2.5	2.25	2.25	2.0	1.75	1.75	1.5	1.5	1.4	1.0	1.0



BOOM ANGLE	BOOM PIVOT TO OUTER LUG, 1ST BOOM EXTENSION, MANUAL EXTENSION RETRACTED									
	4.5	5.0	5.5	6.0	6.5	7.0	7.5	8.0	8.5	9.0
60°				11	11	11	11	9.5	8.0	7.0
50°		11	11	11	10.0	8.5	7.5	6.5	5.5	5.0
40°	11	11	10.0	8.5	7.0	6.0	5.0	4.5	4.0	3.5
30°	11	10.0	8.0	6.5	5.5	5.0	4.0	3.5	3.0	3.0
20°	10.0	8.5	7.0	5.5	5.0	4.0	3.5	3.0	2.5	2.5
10°	9.5	7.5	6.0	5.0	4.5	4.0	3.5	3.0	2.5	2.0
0°	9.5	7.5	6.0	5.0	4.5	3.5	3.0	3.0	2.5	2.0

BOOM ANGLE	BOOM PIVOT TO INNER LUG, 1ST JIB EXTENSION, MANUAL EXTENSION RETRACTED									
	3.5	4.0	4.5	5.0	5.5	6.0	6.5	7.0	7.5	
60°						11	11	11	10.5	
50°				11	11	11	9.5	8.0	7.0	
40°		11	11	11	9.5	8.0	6.5	5.5	5.0	
30°	11	11	10.5	9.0	7.5	6.0	5.0	4.5	4.0	
20°	11	11	10.0	7.5	6.5	5.0	4.5	4.0	3.0	
10°	12.0	11.5	9.0	7.0	5.5	5.0	4.0	3.5	3.0	
0°	12.0	11.5	8.5	7.0	5.5	4.5	4.0	3.5	3.0	

FRANNA CRANES

PTY LTD

Queensland: Lavarack Avenue, Eagle Farm, Brisbane, Australia 4007 Telephone: (07) 268 7422, Telex: AA145618, Fax: (07) 268 2489.
Western Australia: Thorpe Way, Kwinana, Perth, Australia 6167 Telephone: (09) 439 1220, Fax: (09) 439 1235.