

# ALL TERRAIN LIFT & CARRY MOBILE CRANE



Quality  
Endorsed  
Company  
ISO 9001:1994  
QEC 10610



# AT-15

# FRANNA AT-15 CRANE SPECIFICATIONS



## RATED CAPACITY

15 tonne at 1.6m radius  
1 tonne at 15.85m radius  
Max Rhino Hook Height  
18.0m

Lift Hook Block  
10.5 tonne  
Single Line 3.5 tonne

## AXLE LOADINGS

Front Axle 6 tonne  
Rear Axle 10 tonne  
TOTAL 16 tonne

## TURNING RADIUS

Outside Wheels  
6.2 metres

## DIMENSIONS

Overall Length  
9.008 metres  
Overall Width  
2.455 metres  
Overall Height  
2.950 metres

## PERFORMANCE

Maximum - 85km/h  
Gradability - 50%

## ENGINE

Hino H07D  
6 Cylinder Normally  
Aspirated Engine  
141 kW (190 HP)  
at 2900 rpm  
492 Nm (364 ft.lbf)  
at 1700 rpm.

## TRANSMISSION

Allison AT 545, Torque  
Converter Driven,  
4 Speed Fully Automatic.

## TRANSFER CASE

Meritor T-226, 2 speed  
HI/LOW airshift with  
airshift disconnect to  
rear axle.

## DRIVE SHAFTS

Spicer Series 1610.

## DRIVE AXLES

Front - Meritor RS-26-160  
with airshift driver selected  
differential lock.  
Rear - Meritor  
RS-23-160.

## BRAKES

Full air S-cam dual circuit  
brakes on front and rear  
axles. Spring applied park  
brake on rear axle. Crane  
operation Hold Brake on  
front wheel.

## SUSPENSION

Two semi-elliptic springs  
on each axle  
Integral TORSION BAR  
on front axle for stability.

## TYRES

11.00 x 20 Bias Ply Duals.

## CABIN

Two man ROPS type,  
insulated lock up cabin.

## FUEL TANK

Integral 300 litre tank  
in rear body.

## STEERING

Full Power ORBITROL  
with twin Hydraulic double  
acting rams. Priority flow  
from main pump supply  
plus electro hydraulic  
emergency supply.

## HYDRAULIC PUMP

Load Sensing Axial  
Piston Pump  
Maximum Flow  
130 litres/min.

Maximum Working  
Pressure 210 Bar.

## HYDRAULIC TANK

Integral 115 litre  
tank in rear body.

## HYDRAULIC WINCH

Electrically switched Two  
Speed Winch  
Max. Rope Speed High  
85 metres/min

Max. Rope Speed Low  
50 metres/min

Maximum line pull with  
full drum 3.5 tonne

3/2 part Fall Block with  
10.5 tonne capacity

Fully compensated hook  
height whilst telescoping  
the boom.

## LOAD INDICATOR

Fully computerised load  
moment indicator.

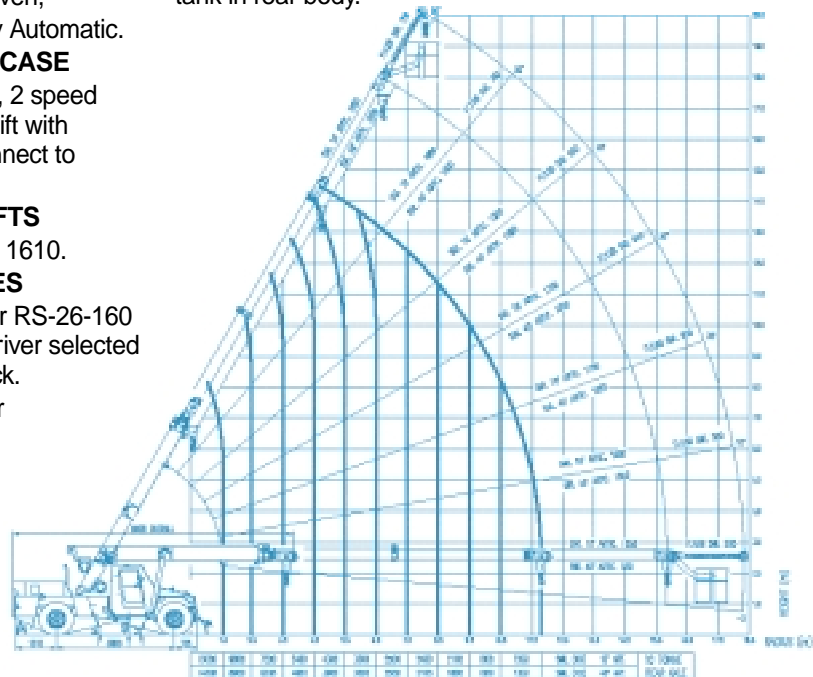
## STANDARD EQUIPMENT

- Air Conditioning
- 8 tonne Machinery Hook
- Work Lights
- Central greasing.

## OPTIONAL EQUIPMENT

- Spare Wheel and Carrier
- Fly Jib (2.6m)
- Man Basket
- Front Mounted  
Spreader Bar
- Engine Monitor System
- Others on application

*Specifications subject to change  
without notice.*



**TEREX LIFTING AUSTRALIA PTY. LTD.**

**ABN 86 010 671 048**

**585 Curtin Avenue East Eagle Farm Brisbane  
Qld 4009 Australia**

**Telephone: +61 7 3868 9600 Facsimile: +61 7 3268 2489**

**Email: [info@franna.com.au](mailto:info@franna.com.au)**

PATENTED DESIGN