

ALL TERRAIN LIFT & CARRY MOBILE CRANE

Quality Systems



Quality
Endorsed
Company
ISO 9001:1994



AT-20

FRANNA AT-20 CRANE SPECIFICATIONS



RATED CAPACITY

20 tonne at 1.4m radius
19 tonne at 1.7m radius
1.55 tonne at 15.80m radius

Hook Height 16.75 metres
Lift Hook block 16.8 tonne
Single Line 4.2 tonne

AXLE LOADINGS

Front Axle 8000kg
Rear Axle 11500kg
TOTAL 19000kg

TURNING CIRCLE

Outside Wheels 7.4 metres

DIMENSIONS

Overall Length 9.67 metres
Overall Width 2.50 metres
Overall Height 3.07 metres

HYDRAULIC WINCH

Line pull with full drum
4.2 tonne
4/3/2 part fall block or
single line, full hook
compensation.

CABIN

ROPS type insulated lock
up cabin.

ENGINE

Hino H07C-T 6 Cylinder
Turbo Charged
162 kW (217 HP) at
2800 rpm
647 Nm (477 ft.lbf) at
1700 rpm.

TRANSMISSION

Allison MT643
4 Speed fully
automatic with
lockup available in
3rd/4th whilst
driving and 1st-4th
in conjunction with
the exhaust
brake.

TRANSFER CASE

Two (2) speed AIR
SHIFT with AIR SHIFT
disconnect to REAR
wheels.

HYDRAULIC TANK

Capacity 255 litres.

FUEL TANK

Capacity 290 litres.

DRIVE AXLES

Front and rear heavy
duty drive axles. Driver
engaged air diff lock on
front axle.

DRIVE SHAFTS

Spicer Series 1610.

BRAKES

Full air S cam Twin Circuit
Brakes front and rear
axles. Spring applied on
rear axle, Crane operation
hold brake on front wheel.
Engine exhaust brake.

TYRES

1200 x 20 x 20 PR Duals.

STEERING

Full Power ORBITROL
with twin Hydraulic double
acting rams. Priority flow
from main pump supply
plus electro hydraulic
emergency
supply.

HYDRAULIC PUMP

Load sensing axial piston
126 litre/min.

SUSPENSION

Two (2) Semi elliptic
springs on each axle plus
TORSION BAR on front
axle for stability.

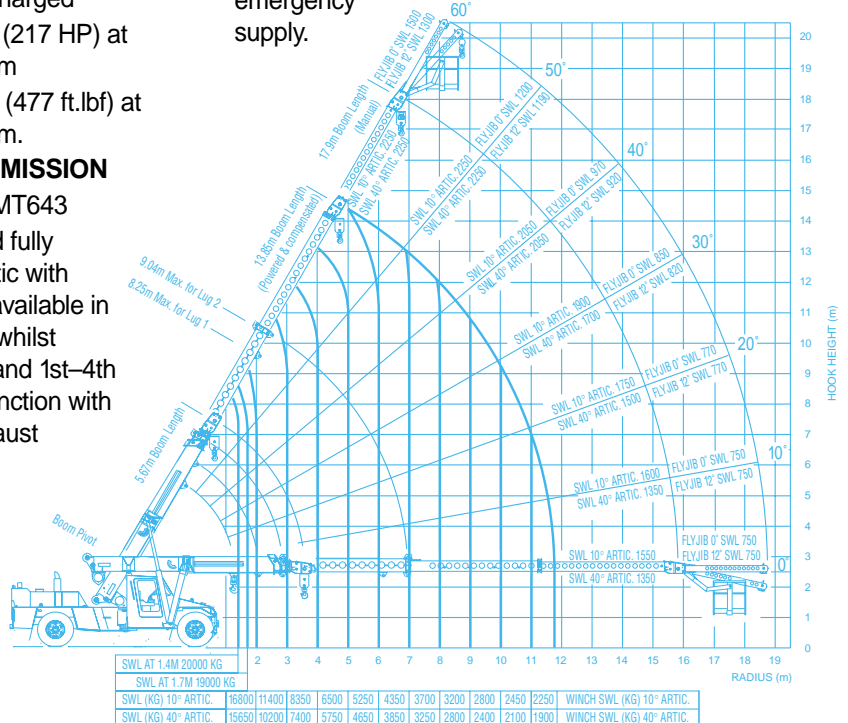
PERFORMANCE

Maximum – 85kph
Gradability – 50%

OPTIONAL EQUIPMENT

- Air Conditioning
- Machinery Hook (10 tonne SWL)
- Spare wheel carrier
- Central greasing
- Fly Jib (2.9m)
- Man Basket
- Spreader Bar
- Others on application

Specifications subject to change
without notice.



TEREX LIFTING AUSTRALIA PTY. LTD.

ABN 86 010 671 048

585 Curtin Avenue East Eagle Farm Brisbane
Qld 4009 Australia

Telephone: +61 7 3868 9600 Facsimile: +61 7 3268 2489

Email: info@franna.com.au