

# ALL TERRAIN LIFT & CARRY MOBILE CRANE



Quality  
Endorsed  
Company  
ISO 9001:1994



## MAC-25

**FRANNA CRANES**

# FRANNA MAC-25 CRANE SPECIFICATIONS

## RATED CAPACITY

25 Tonne at 1.45 radius  
 1.75 Tonne at 15.71m radius  
 Max Hook Height 18.0m  
 Fall Block (6 parts)  
 capacity 25 Tonne  
 Single Line 4.2 Tonne

## AXLE LOADINGS

Removable Counterweight  
 on Front  
 Front Axle 11 900kg  
 Rear Axle 12 000kg  
 TOTAL 23 900kg  
 Removable Counterweight  
 on Rear  
 Front Axle 9 850kg  
 Rear Axle 14 040kg  
 TOTAL 23 900kg

## TURNING CIRCLE

Outside Wheels 7.9 metres

## DIMENSIONS

Overall Length 9.985 metres  
 Overall Width 2.720 metres  
 Overall Height 3.075 metres

## PERFORMANCE

Maximum – 75 km/h  
 Gradability – 45%

## ENGINE

Hino H07C-T 6 Cylinder  
 Turbo Charged  
 162 kW (217 HP) at 2800 rpm  
 647 Nm (477 ft.lbf) at 1700 rpm

## TRANSMISSION

Allison MT643  
 4 Speed fully automatic with  
 lockup available in 3<sup>rd</sup>/4<sup>th</sup> whilst  
 driving and 1<sup>st</sup>-4<sup>th</sup> in conjunction  
 with the exhaust brake.

## TRANSFER CASE

Fabco TC-237  
 Two speed airshift for High and  
 Low Range. 2WD/4WD via  
 airshift disconnect to rear axle.

## DRIVE SHAFTS

Spicer Series 1610

## DRIVE AXLES

Heavy Duty High  
 Speed Planetary  
 Axles. Front axle  
 fitted with driver  
 selectable diff  
 lock and  
 reinforced for  
 pick and carry  
 operation.

## BRAKES

420mm x 210mm Drums with air  
 operated S cam Twin Circuit  
 Service and Spring Applied Park  
 Brakes on both front and rear  
 axles. Crane operation hold  
 brake on driver's side front  
 wheel. Driver selectable engine  
 exhaust brake is available in all  
 gears – automatically selects  
 converter lockup.

## TYRES/RIMS

14.00 x 20 x 20 PR Bias Ply  
 Duals. 20" x 10" Heavy Duty ISO  
 10 stud 335 PCD Spigot Mount  
 Rims.

## SUSPENSION

Two (2) Semi elliptic springs on  
 front and rear axle plus  
 TORSION BAR on front axle  
 for stability.

## CABIN

Two man, insulated lock up  
 cabin.

## ARTICULATION

Twin Heavy Duty self-aligning  
 bearings with separate seals,  
 externally adjustable top and  
 bottom.

## FUEL TANK

440 Litres

## STEERING

Full power ORITROL with twin  
 Hydraulic double acting rams.  
 Priority flow from main pump  
 supply plus electro hydraulic  
 emergency supply.

## HYDRAULIC PUMP

Load sensing axial piston  
 Maximum flow 190 Litre/min.  
 Maximum working pressure  
 250 Bar.

## HYDRAULIC WINCH

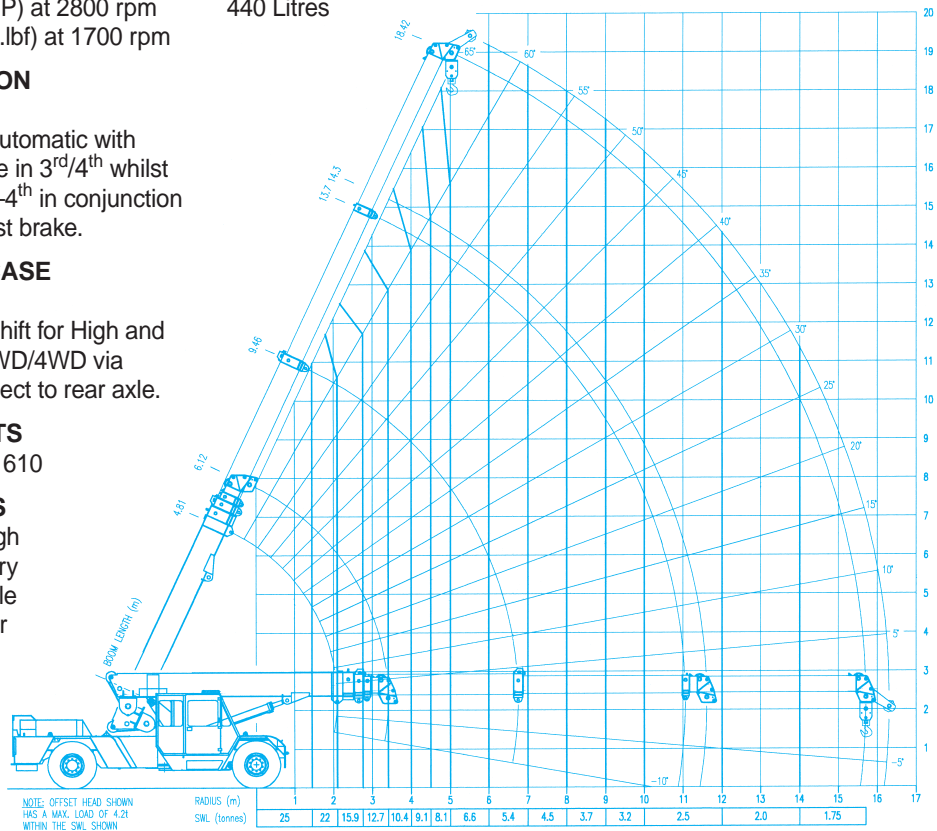
Line pull with full drum 4.2  
 Tonne, 6/4 part Fall Block or  
 Single Line, fully compensated  
 hook height when telescoping  
 boom 1 & 2.

## HYDRAULIC TANK

380 Litres with top mounted  
 return and in tank suction filters.

## OPTIONAL EQUIPMENT

- Full Power Boom
- Air Conditioning
- Machinery Hook  
(15 tonne SWL)
- Offset Auxiliary Head Sheave
- Offset Fly Jib
- Front Mounted Spreader Bar
- 275kg SWL Man Basket



**FRANNA CRANES PTY. LTD. A.C.N. 010 671 048**  
**570 Curtin Avenue Eagle Farm Brisbane Qld 4009 Australia**  
**Telephone: +61 7 3268 7422 Facsimile: +61 7 3268 2489**