

UC-10

LIFT & CARRY

MOBILE

CRANE

Quality Systems
Quality
Endorsed
Company
ISO 9001:1994



FRANNA CRANES

FRANNA UC-10 CRANE SPECIFICATIONS



RATED CAPACITY

10 Tonne at 1.5m radius
 2.4 Tonne at 6.4m radius
 1.5 Tonne at 9.6m radius
 (manual ext.)
 Max Hook Height 8.5m
 (11.5m manual)
 Fall Block (2 parts)
 capacity 7 Tonne

AXLE LOADINGS

Front Axle 4 000 kg
 Rear Axle 7 000 kg
 TOTAL 11 000 kg

TURNING RADIUS

Outside Wheels 6.0 metres

DIMENSIONS

Overall Length 8.30 metres
 Overall Width 2.25 metres
 Overall Height 2.80 metres

PERFORMANCE

Maximum – 40 km/h
 Gradability – 50%

ENGINE

Perkins 1004-4 4 Cylinder
 Naturally Aspirated
 57 kW (76 HP) at 2200 rpm
 258 Nm (190 ft.lbf) at
 1200 rpm.

TRANSMISSION

International Transmissions
 Limited (ITL) SS400 Torque
 converter driven, power
 shuttle forward/reverse,
 4 speed synchromesh
 manual transmission.

DRIVE SHAFT

Spicer Series 1480.

REAR DRIVE AXLE

International Transmissions
 Limited (ITL) PD 70 Rigid
 Planetary Drive Axle
 Max-Trac differential to
 boost traction by up
 to 30%.

BRAKES

Full power dual circuit
 hydraulic with
 accumulators.
 Front: Oil actuated
 ventilated disc brakes.
 Rear: Inboard self-adjusting,
 oil immersed, multi-plate
 disc brakes.
 Park Brake: Transmission
 mounted failsafe multi-disc.

TYRES/RIMS

Front: 10.00 x 20 x 16 PR
 Bias Ply Duals 7.5 x 20 Rim
 8 studs.
 Rear: 14.00 x 24 16 PR
 Bias Ply Single 10.00 x 24
 Rim (5 stud).

CABIN

Two man, insulated lock
 up cabin.

ARTICULATION

Three Heavy Duty self-
 aligning bearings with
 integral seals, to give
 90° articulation and
 14° oscillation.

FUEL TANK

120 Litres.

STEERING

Full power ORBITROL
 with twin Hydraulic double
 acting cylinders. Priority
 flow from main pump
 supply plus electro
 hydraulic emergency supply.

HYDRAULIC PUMP

Gear pump close coupled
 to engine.
 Maximum flow: 90 Litre/min.
 Maximum working pressure:
 230 Bar.

HYDRAULIC WINCH

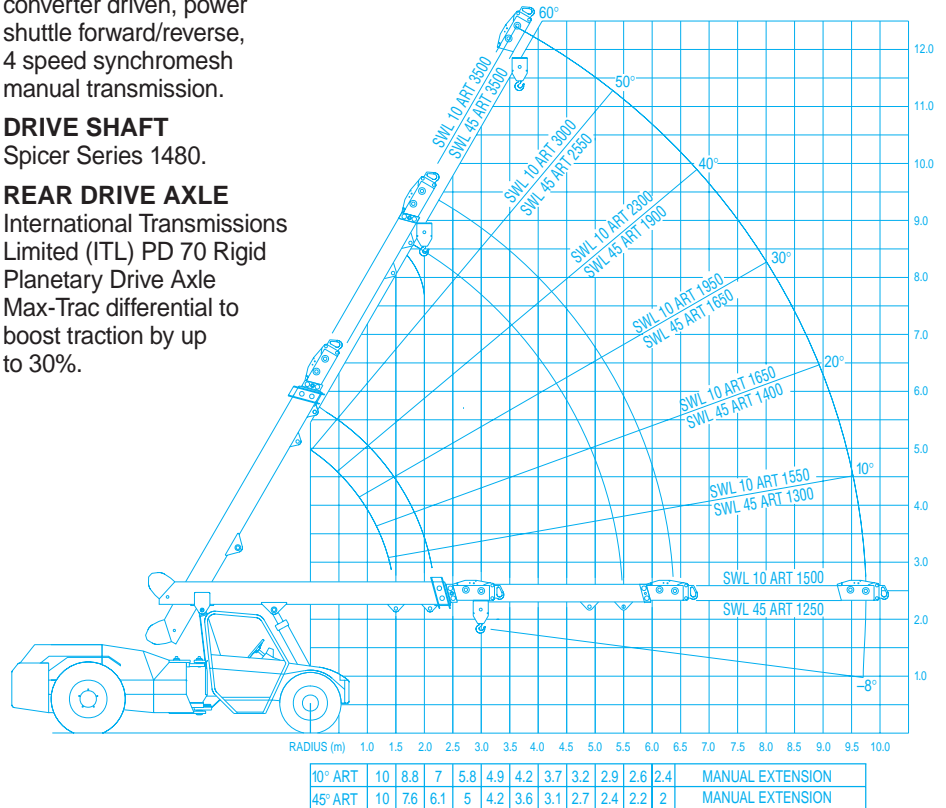
Line pull with full drum 3.5
 Tonne, 2 part Fall Block
 with 7 Tonne capacity, fully
 compensated hook height
 when telescoping boom.

HYDRAULIC TANK

120 Litres with remote
 mounted return and in tank
 suction filters.

OPTIONAL EQUIPMENT

- Air Conditioning
- 7 Tonne Machinery Hook
- Front Mounted
 Spreader Bar
- 275 kg SWL Man Basket
- Fork Attachment 4 tonne
 Capacity
- Manual Extension



PATENTED DESIGN



FRANNA CRANES PTY. LTD. A.C.N. 010 671 048
Curtin Avenue Eagle Farm Brisbane Qld 4009 Australia
Telephone: +61 7 3868 9600 Facsimile: +61 7 3268 2489
Email: info@franna.com.au