

# TEREX ROUGH TERRAIN CRANES



WORKS FOR YOU.™



# THE PERFECT CHOICE FOR DAY TO DAY LIFTING

Go off-road confidently with Terex rough terrain cranes.

Whether you maintain drilling rigs in Dubai, construct steel superstructure for a hospital in Toronto, offload rail for a transportation expansion project in Zurich or move mining equipment in an Indiana quarry, a Terex rough terrain crane will provide the solution you need.

With excellent ground clearance and up to four steering modes, positioning these cranes in even the most rugged terrain is easy. Add to that their flexibility, durable construction and low cost of ownership, and you can see why Terex rough terrain cranes are an easy choice for day to day lifting.

## ONE SIZE FITS ALL

The compact size and adequate ground clearance means no matter the ground type you always have the right traction and manouverability.

## SIMPLICITY

Even for the less experienced operators, the simple and intuitive control system makes becoming a master a walk in the park.

## COST EFFICIENCY

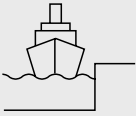
The more hours your crane stays in service, the better your profit potential. A crane that can stand up to any challenge.

## VERSATILITY

From demanding lifting to pick & carry capability, this is the solution for multiple industries needs and requirements.

# KEY APPLICATIONS

The versatility of our rough terrain cranes allow us to cater for a number of applications, including:



SHIPYARDS



CONSTRUCTION



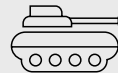
OIL & GAS



POWER PLANTS



SHIPPING  
& LOGISTICS



MILITARY

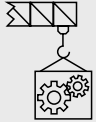




**MOBILE  
EQUIPMENT  
COMMISSIONING**



**MATERIAL  
HANDLING**



**MAINTENANCE  
WORKS**



**ROADS & RAILWAYS  
CONSTRUCTION**



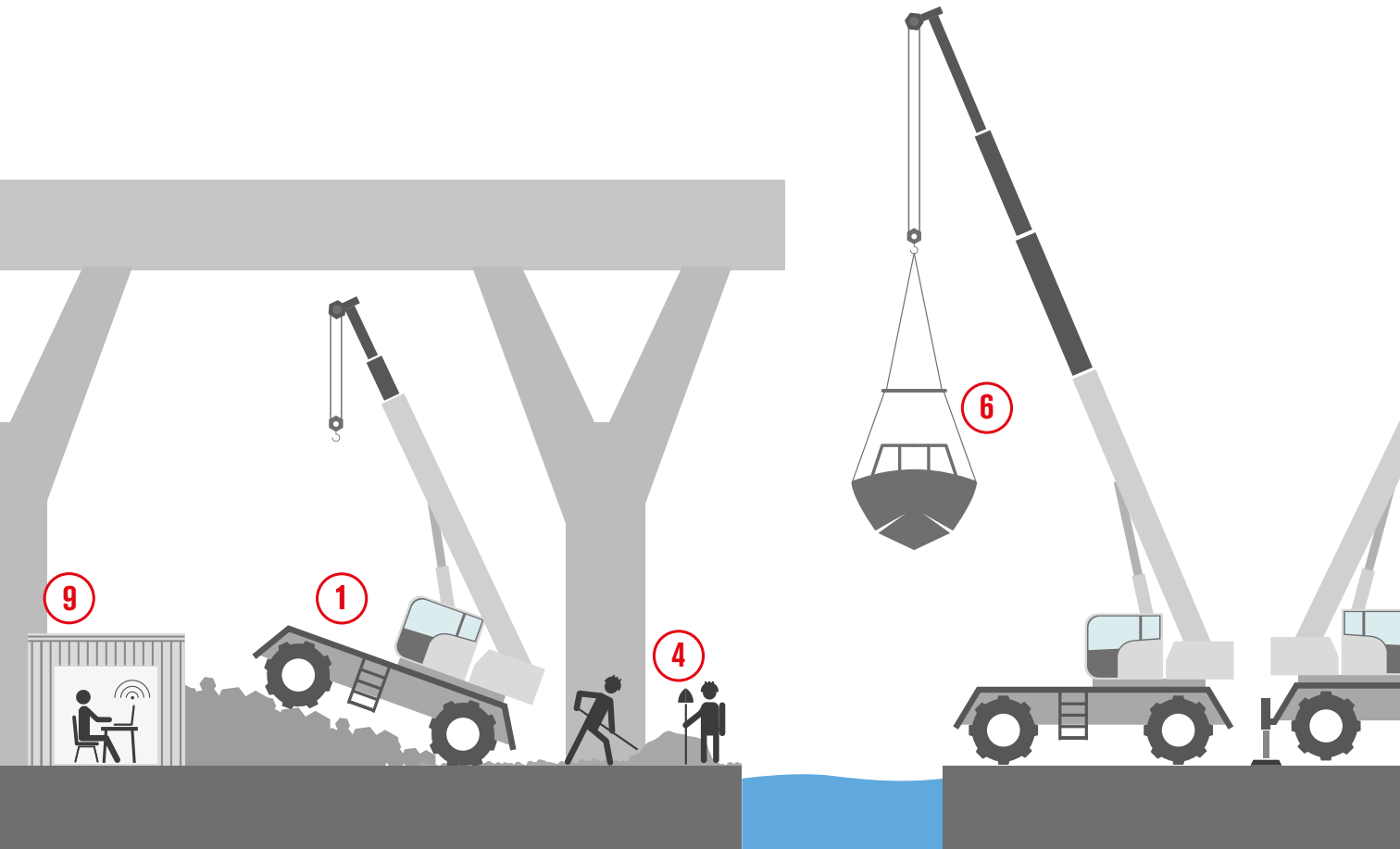
**GENERAL  
LIFTING  
APPLICATIONS**



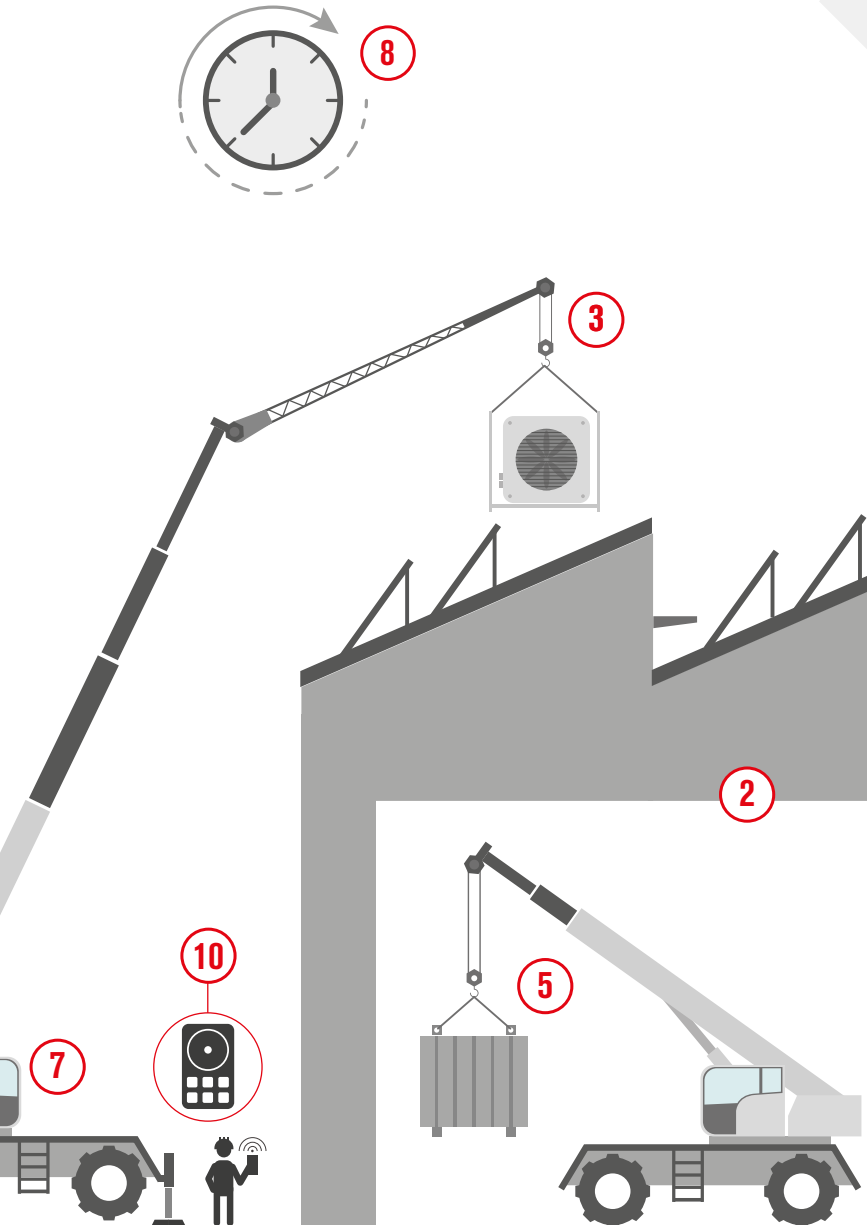
**MINING**

# WHY SHOULD YOU CHOOSE A TEREX RT?

- ▶ To work on undeveloped sites or with unpaved roads
- ▶ To work inside buildings or within limited spaces
- ▶ In need of a crane on site for more than a week
- ▶ Combination of pick and carry ability and high lifting performance on outriggers
- ▶ For new to experienced operators
- ▶ Multiple lifting requirements



# TEREX ROUGH TERRAIN CRANES AT A GLANCE



- 1.** No matter the ground type or condition, Terex RT are highly efficient; a real ALL Terrain crane
- 2.** A versatile machine for indoor use thanks to its compact dimensions and zoning system
- 3.** Jib availability to reach the more demanding spots on top of the buildings
- 4.** No matter how crowded and narrow the lift area, you can always find the right safe spot
- 5.** Pick and carry capability enables you to lift and carefully place loads at a distance
- 6.** High lift capacity and compact crane dimensions, the perfect compromise
- 7.** Single cabin design with an easy-to-use, intuitive control system
- 8.** Increases the value of your investment over time
- 9.** Terex T-Link telematics platform gives you the freedom to be in control of your fleet data anytime, anywhere
- 10.** Remote control available to perform lifts

# A FOUNDATION OF STRENGTH

The Company was established in 1968 in Crespellano, near Bologna, Italy, under the name of Bendini SpA. Along the years Bendini became a leading brand in the mobile cranes sector, imposing itself as a reference point in the rough terrain cranes business, especially in Italy.

In 1989 Bendini became part of the PPM Group, a leading French manufacturer of all terrain cranes. In 1995 PPM joined the American group Terex Corporation and in 1999 Bendini became Terex Italia Srl.

Since then, Terex has been strongly investing in research & development, always looking for new technologies to keep its rough terrain cranes range at the top of the market. Terex's leadership is recognized by the massive presence of its cranes in the most important construction sites around the world.

1968



1989



1995




2018



50 years  
of activity

2020



TRT range with  
 TEOS  
operating system





# TEREX ROUGH TERRAIN CRANES TODAY

Rough terrain cranes assembly is fully gathered in **TEREX ITALIA Srl**, in its manufacturing facility of Crespellano (BO), Italy, which houses R&D, production, sales, service and parts under one roof. This presence, combined with experienced and fully trained staff ensures the quality of each crane.

Terex Rough Terrain Cranes is part of the Materials Processing segment at **TEREX CORPORATION**, a global manufacturer of aerial work platforms and materials processing machinery. Terex Corporation designs, builds, and supports products used in construction, maintenance, manufacturing, energy, minerals and materials management applications from its facilities spread all over the world in North and South America, Europe, Australia and Asia.



# SIMPLY SMART

If you could only use one word to describe Terex rough terrain cranes, you'd likely choose "smart." From the value of a long service life, to the easy transport to the excellent operator control, every aspect of Terex rough terrain cranes is designed to lift the load and help lift your business for a maximum return on your investment.



## MAXIMUM VERSATILITY AND PERFORMANCES

- Superior load charts and tip heights
- Low energy consumption
- Cummins motor
- Up to 90 t lifting capacity
- Up to 47 m max boom length with 3 boom modes
- Up to 49,5 m tip height with main boom
- Up to 66 m tip height with jib

## FULL CONTROL

- New TEOS Operating System
- 10" full-color touch screen display with intuitive interface
- Ergonomic electro-proportional joysticks with adjustable responsiveness to operator preferences

## WIDE OPTIONS CHOICE

- Additional jibs
- Auxiliary winch
- Up to 4 cameras integrated on main display
- Remote radio control

## FULLY EQUIPPED

- Included on base unit:
- T-Link Telematics Platform
- 3 adjustable working area
- LED lights

## TOP COMFORT AND VISIBILITY

- Wide and tiltable cabin with large glass surfaces, no blind spots
- Heating and air conditioning included

## EASY TO HANDLE

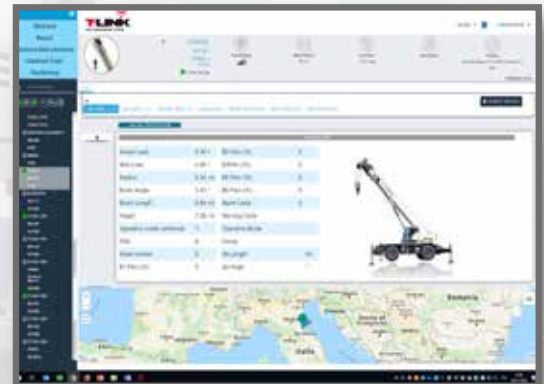
- Easy transportability and maneuverability
- Compact: up to max 3.0 m width 4 steering modes



- ▶ Cost savings and increase of productivity
- ▶ Better management of maintenance and technical assistance
- ▶ Fleet control with Geofence function: monitor each crane's position
- ▶ Improved machine management, statistics and real-time data.

The full range of Terex Rough Terrain Cranes is fitted as standard configuration with T-Link Telematics Platform which provides the customer with real time information on the performance of their machine.

T-Link can be retrofitted.



## **TEOS NEW TEOS OPERATING SYSTEM**

The new **TEOS Terex Operating System** TEOS, available on all TRT range, offers improved information flow and accessibility to increase operating efficiency.

- ▶ 10" full-color touch screen display
- ▶ Intuitive navigation
- ▶ Diagnostics
- ▶ Options included as optional cameras integrated on main display, status of radio control, T-Link platform
- ▶ Customizable electro-proportional Joysticks. The operator can customize the buttons and fine-tune the responsiveness of all crane movements – smoother or prompt reaction – to meet personal preferences. Multiple personal configurations can be saved.

# THE RANGE

Terex offers a selection of Rough Terrain Cranes with lift capacities ranging from 35 to 90t, standing out for their unique features and benefits:



# TRT RANGE



## TRT 35

35 t lifting capacity  
30.1 m boom length  
32.8 m max. tip height  
41.1 m max. tip height with jib



## TRT 65

65 t lifting capacity  
43.5 m boom length  
46.0 m max. tip height  
61.0 m max. tip height with jib



## TRT 80

80 t lifting capacity  
42.1 m boom length  
45.0 m max. tip height  
59.5 m max. tip height with jib



## TRT 90

90 t lifting capacity  
47.0 m boom length  
49.5 m max. tip height  
66.0 m max. tip height with jib

# RT RANGE



## RT 1045

45 t lifting capacity  
31.1 m boom length  
33.5 m max. tip height  
47.1 m max. tip height with jib



## RT 1045L

44 t lifting capacity  
37.4 m boom length  
39.5 m max. tip height  
47.5 m max. tip height with jib



## RT 1070

70 t lifting capacity  
32.4 m boom length  
35.0 m max. tip height  
55.0 m max. tip height with jib



## RT 1080

80 t lifting capacity  
34.0 m boom length  
37.0 m max. tip height  
56.5 m max. tip height with jib

# FULL COMMITMENT TO QUALITY

The more hours your crane stays in service, the better your profit potential. Terex rough terrain cranes feature rugged, job-proven engineering combined with the best components available, all assembled by a highly trained, world-class workforce for peace-of-mind reliability.

The quality of Terex Rough Terrain Cranes is constantly monitored on all the phases of its development, from design to factory assembly. A deep monitoring of failure rate is performed based on info and suggestions from field and our partner Dealers. Cranes are supported by a 24-month warranty, parts with a 12-month warranty.

- ▶ Quality manufacturing for long service life
- ▶ Ease of maintenance: easy access of all maintenance points and filters reduce the amount of time for daily and periodic maintenance
- ▶ World-class design supported by world-class suppliers
- ▶ Fully supported by Terex worldwide parts and service and a strong network of authorized Dealers



# TOP CLASS SERVICE & PARTS SUPPORT

## SERVICE

At Terex Rough Terrain Cranes, we do more than manufacture world-class quality cranes. Investing in a Terex Crane, you will get a team of world-class support service with a true global presence in 80 countries and on six continents who are invested in your success.

A wide network of authorized Terex Dealers with teams of highly experienced technicians fully trained on each product detail and directly supported by Terex Rough Terrain Cranes Service, is available to offer any technical support reaching you wherever you are around the World or remotely via phone, Email or chat.

Terex Dealers and Terex Rough Terrain Cranes Service is also available to recommend you the best way to keep your crane at best offering maintenance plans from corrective to preventive maintenance, to quickly recover the investment in your equipment during all phases of its life cycle and ensure downtimes are minimized.

Service support and original spare parts are also offered to legacy products, to ensure your fleet continues to generate profit over time.



**TEREX**® and Terex legacy brands:



**LORAIN**



**PEINER**





# PARTS

Only Terex supplies a complete range of genuine, factory-guaranteed parts designed for your exact machine model.

Go with Terex's proven OEM parts and get the absolute most out of your investment.

Terex parts are available at our authorized Terex Dealers warehouses and at our global distribution centers in the Netherlands and United States, with a dedicated logistics organization ensuring a quick shipment to any destination of the World.

Parts can be ordered through the Terex Dealer or directly online on [parts.terex.com](http://parts.terex.com) web portal.

Frequent promotions on spare parts allow you to keep your stock of key spare parts getting the best discounts.

Over 165.000 active cranes parts available in our distribution centres

Quality guaranteed. All parts come with a 12 month warranty

Fast shipping. Over 90% of all orders leave our warehouses the same day



[parts.terex.com](http://parts.terex.com)

The online hub to order all your Terex Rough Terrain Cranes parts.

# LIFTPLAN

[www.terexcranes-liftplan.com](http://www.terexcranes-liftplan.com) is the online tool designed to add value to our customers' lifting operations.

Terex Lift Plan provides great benefits, speeding up and simplifying the process of selecting the right Terex crane to perform a lift in a safe and efficient way.

Available free of charge to Terex fleet owners and their respective customers, it is extremely flexible and can be configured to meet specific and individual needs.

Available in nine different languages, uses either imperial or metric units and employs a variety of different methods to determine the best machine to improve safety, performance and productivity on site.



# TAILORMADE FINANCIAL SUPPORT

**Terex Financial Services (TFS) is fully integrated into the fabric of the Terex Business.**

We are committed to working with our dealers and customers in developing and adding true value to their business, and assisting in the acquisition and funding of their Terex equipment.

TFS offer global solutions and through a team of dedicated people who understand the needs of our dealers and customers we can direct you to the correct financial solution for your business.

We have developed a Turnkey Funding solution to assist our dealer partners, this offer is designed to maximize a dealers potential to develop their Terex Business.

- Terex Self-funding Capability
- Improved Working Capital Management
- Demonstration Programs
- Rental Purchase Schemes
- Stock Programs

Programs are tailored by region through a panel of funders. TFS offers a comprehensive suite of finance and leasing facilities for the end user.



The concept of adding value to your business is critical to us and this is why the TFS Team can assist you in developing the right solution for you. These facilities can be developed and tailored to suit the individual needs of each customer and geographical region.

## **The range of facilities and services available are as follows:**

- Leasing Solutions
- Operating lease Solutions
- Fair Market Value lease solutions
- Loans/Hire Purchase facilities
- Used Equipment Financing
- Asset Management

# TEREX ROUGH TERRAIN CRANES

## Terex Italia Srl

Via Cassoletta, 76 - Fraz. Crespellano  
40053 Valsamoggia (BO)  
Italy

Ph: +39 051 6501011

Email: [mktg.cranes@terex.com](mailto:mktg.cranes@terex.com)



[www.terex.com/rough-terrain-cranes](http://www.terex.com/rough-terrain-cranes)

Brochure Reference: RT-BR-M-E-RANGE BR-04/23

**WORKS FOR YOU.™**