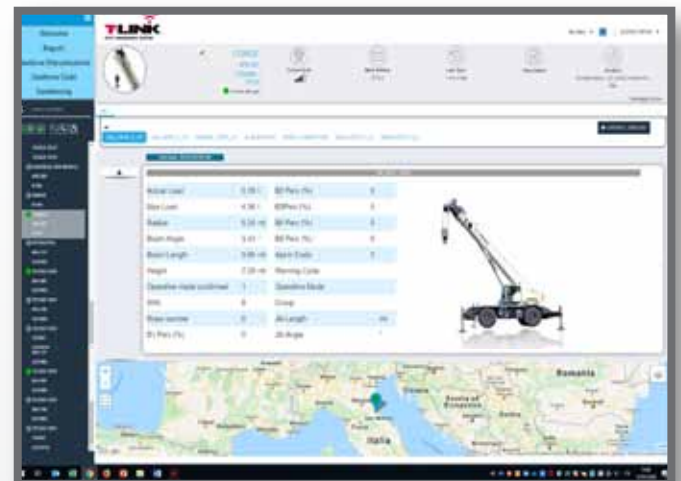


# TELEMATICS PLATFORM FOR ROUGH TERRAIN CRANES

The T-Link Telematics Platform, included on base unit, allows remote access of crane fleet operating data anytime, anywhere via the internet from your computer, smartphone or tablet.

- ▶ **Cost savings and increased of productivity**  
Thanks to T-Link, cost savings and increased productivity can be achieved in all applications.
- ▶ **Better management of maintenance and technical assistance**  
Remote monitoring delivers critical vehicle operating data and statistics. Routine maintenance can be scheduled more efficiently and unexpected issues are quickly addressed.
- ▶ **Fleet control**  
Using the **Geofence** function, each crane's position is monitored, and the owner is notified in the event the crane leaves its set boundary.
- ▶ **Improved machine management, statistics and real-time data**  
A wide range of **real-time operating data** and **fault-codes** are reported to assess fleet performance. The machine's **Data logger** section collects detailed machine information, such as working hours, load lifting statistics, alarm history, etc.





## TEREX CRANES

### Rough Terrain Cranes

Via Cassoletta, 76 - loc. Crespellano  
40053 Valsamoggia (BO)  
Italy

Ph: +39 051 6501011  
Email: [mktg.cranes@terex.com](mailto:mktg.cranes@terex.com)

### Tower Cranes

Via delle Innovazioni, 17  
33074 Fontanafredda (PN)  
Italy

Ph: +39 0434 989111  
Email: [mktg.cranes@terex.com](mailto:mktg.cranes@terex.com)



[www.terex.com/cranes](http://www.terex.com/cranes)