

# TRT 35

## ROUGH TERRAIN CRANE

### 35 T CAPACITY



▶ 35 t lifting capacity

▶ 32,8 m max tip height main boom

▶ 30,1 m max boom length

▶ 41,1 m max tip height with additional 8m lattice jib

#### EASY TO HANDLE

Easy transportability and maneuverability:

- Compact: only 2.53 m width
- 4 steering modes
- Automatic / manual shift modes

#### HIGH PERFORMANCES

- Superior load charts and tip heights
- 4-sections hydraulic boom with proportional extension
- Low energy consumption Cummins engine 129 kW (V) / 119 kW (IIIA)
- 14.00 (16.00) tires

#### FULL CONTROL: New TEOS Operating System

- 10" full-color touch screen display with intuitive interface
- Ergonomic electro-proportional joysticks with adjustable responsiveness to operator preferences

#### GREAT COMFORT, EXCELLENT VISIBILITY

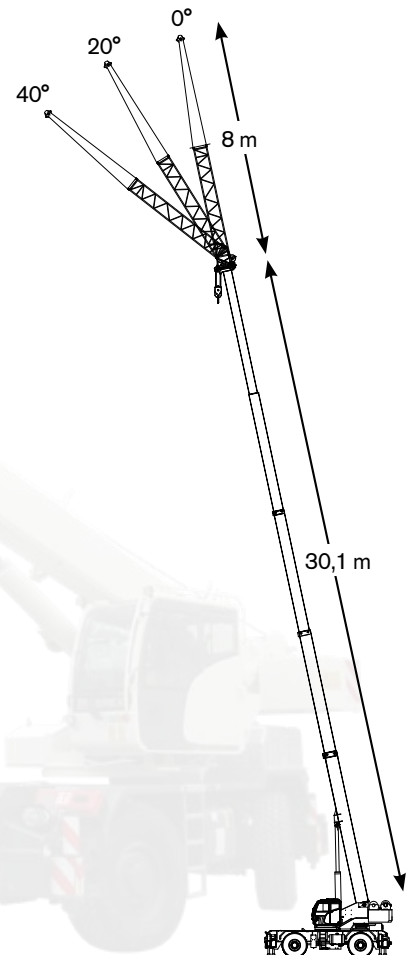
- Extra wide and tiltable cabin with large glass surface. No blind spots.
- 3 working area LED lights outside the cab included

#### TOP RELIABILITY

- High quality assured, with minimal service needs
- Low operating cost
- T-Link Telematics Platform included

#### WIDE OPTIONS CHOICE

- Additional lattice jib of 8 m and single sheave
- Auxiliary winch
- Up to 4 cameras for enhanced visibility, integrated on main display
- Radio remote control





Cost savings and increased of productivity  
 Better management of maintenance and technical assistance  
 Fleet control with Geofence  
 Improved machine management, statistics and real-time data



Improved information flow and accessibility  
 Increases operating efficiency  
 10" full-color touch screen display  
 Intuitive navigation  
 Diagnostics  
 Options included (cameras, radio control, T-Link)

## KEY APPLICATIONS

The versatility of our rough terrain cranes allow us to cater for a number of applications, including:



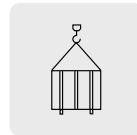
OIL & GAS



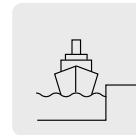
CONSTRUCTION



MINING



SHIPPING & LOGISTICS



SHIPYARDS



POWER PLANTS



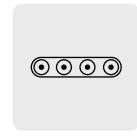
ROADS & RAILWAYS CONSTRUCTION



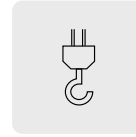
MILITARY



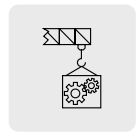
MATERIAL HANDLING



MOBILE EQUIPMENT COMMISSIONING



GENERAL LIFTING APPLICATIONS



MAINTENANCE WORKS



## TEREX ROUGH TERRAIN CRANES

**Terex Italia Srl**

Via Cassoletta, 76 - Fraz. Crespellano  
 40053 Valsamoggia (BO)  
 Italy

Ph: +39 051 6501011

Email: [mktg.cranes@terex.com](mailto:mktg.cranes@terex.com)

[www.terex.com/rough-terrain-cranes](http://www.terex.com/rough-terrain-cranes)



Brochure Reference: RT-FL-M-E-TRT 35-01/23

**WORKS FOR YOU.™**