



TRT 70US
70 USt capacity class
Rough terrain crane
Datasheet
imperial

TRT 70US



WORKS FOR YOU.™

CONTENTS

TRT 70US

INDICE

	Page · Página:
Key · Lejenda	3
Highlights · Características destacadas	4
Weights · Pesos	5
Dimensions · Dimensiones	6-7
Steering Radii · Radios de dirección	8-9
Range Graph – Main Boom · Diagrama de carga	10
Load Chart – Main Boom. US STANDARD ASME B30.5 · Tabla de carga	11-21
Range Graph – Jib · Diagrama de carga	22
Load Chart – Jib. US STANDARD ASME B30.5 · Tabla de carga	23
Technical Specifications · Especificación técnica	
Boom · Pluma	24
Hoist · Cabrestante	24
Upper Structure · Superestructura	24
Cab and Controls · Cabina y controles	25
Carrier · Chasis	25-26
Vehicle Performance · Prestaciones del vehículo.....	26
Tires · Neumáticos	26
Options · Opciones	26-27
Notes to lifting capacity · Notas sobre la capacidad de elevación	29

LEJENDA

	Counterweight · Contrapeso		No. of lines · No ramales
	Main boom · Pluma principal		Single hook · Gancho simple
	Boom length · Longitud pluma		Performance · Prestaciones
	Boom extension · Extensión		Boom elevation angle · Ángulo elevación pluma
	Tip height · Altura de la punta		Working radius · Radio de trabajo
	Angular offsets · Inclinación		Min. distance between hook block and boom head Distancia mínima gancho a cabeza pluma
	Auxiliary head · Cabeza auxiliar		Slewing locked · Giro bloqueado
	Slewing / Allowable range · Giro / Rango admisible		Slewing gears · Sistema de giro
	Outriggers / Lifting on outriggers Estabilizadores / Elevación sobre estabilizadores		Lifting on wheels / Pick & Carry Elevación sobre ruedas / pick & carry
	Main hoist · Cabrestante principal		Auxiliary hoist · Cabrestante auxiliar
	Hoist speed · Velocidad cabrestante		Rope length · Longitud cable
	Rope · Cable		Line pull · Tracción cable
	Rope diameter · Diámetro cable		Tires · Neumáticos
	Hook block · Gancho		Engine · Motor
	Cab · Cabina		Steering · Dirección
	Controls · Controles		Speed · Velocidad
	Mechanical transmission · Transmisión mecánica		Heating / Air conditioning · Calefacción / Climatización
	HYDR Hydraulics · Sistema hidráulico		Gradeability · Pendiente máx.
	Operation temperature · Temperatura de servicio		Gross vehicle weight · Peso bruto vehículo
	Lights · Luces		Weight on front axle · Peso eje delantero
	Electric circuit · Circuito eléctrico		Weight on rear axle · Peso eje trasero
	Crane / Crane in standard configuration Grúa / Grúa configuración estándar		No. of sheaves · Nº poleas
	Crane without counterweight · Grúa sin contrapeso		Rams-horn hook · Aparejo gancho doble
	Rated weight on hook block · Carga nominal en gancho		Differential lock · Bloqueo diferencial

HIGHLIGHTS

CARACTERÍSTICAS DESTACADAS

TRT 70US

▶ Rated capacity · Capacidad nominal:
70 USt at 8.2 ft working radius
70 USt a 8.2 ft radio de trabajo

▶ Maximum main boom length · Longitud de pluma máx.:
143 ft

▶ Maximum tip height · Altura de la punta máx.:
151 ft


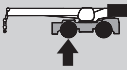


▶ Maximum hook height · Altura de gancho máx.:
195 ft



WEIGHTS

TRT 70US

PESOS

			
 Weight with aux winch, jib, rooster sheave, 70 USt and 11 USt hook block, 26.5 tyres, full tank Peso con cabrestante auxiliar, lança auxiliar, polea aux., gancho 70 USt y 11 USt, neumaticos 26.5, combustible lleno	99,870 lbs	61,289 lbs	38,581 lbs
Add / Subtract for main optional equipment Sumar / restar para equipamiento opcional principal			
 26 ft / 49 ft Jib stowed aside the boom Lança almanecada lateralmente a la pluma	-2646 lbs	-425 lbs	+1550 lbs
 Auxiliary hoist Cabrestante auxiliar	-2138 lbs	+425 lbs	-2564 lbs
 70 USt Single hook* Gancho simple	-1455 lbs	-2531 lbs	+1076 lbs
 22 USt Single hook* Gancho simple	+661 lbs	+1151 lbs	-489 lbs
 11 USt Single hook* Gancho simple	-397 lbs	-690 lbs	+293 lbs

NOTE: Values are subject to 2% variation · NOTA: Valores sujetos a una variación del 2%

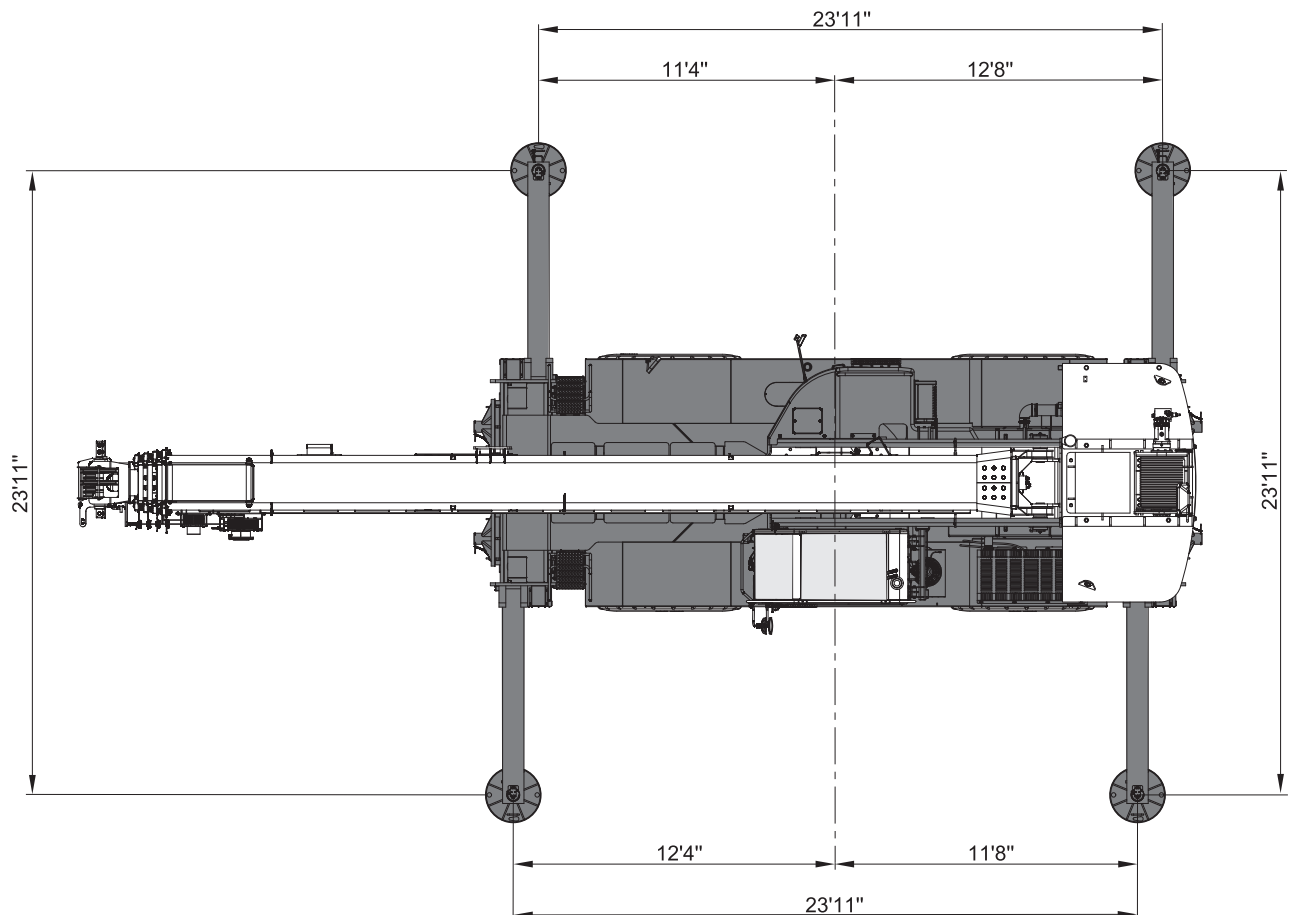
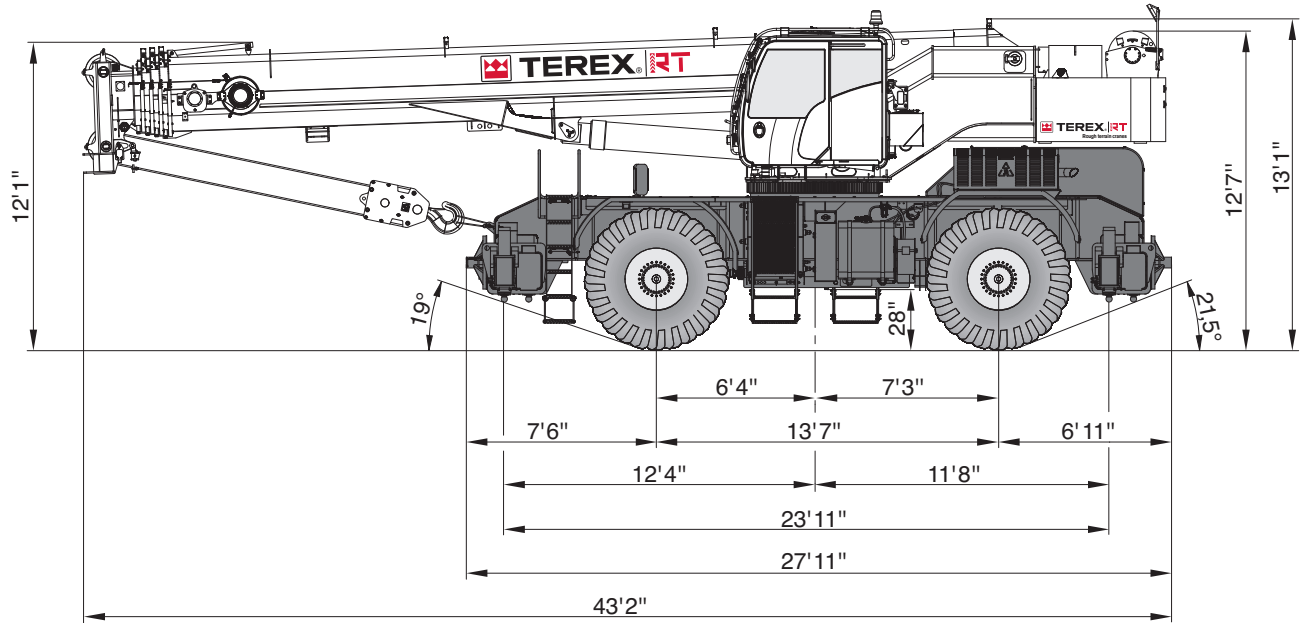
* Weight distribution calculated considering the hook block linked to the front shield of the machine · Distribución de pesos calculada considerando el gancho asegurado al protector frontal

DIMENSIONS

TRT 70US

DIMENSIONES

26.5

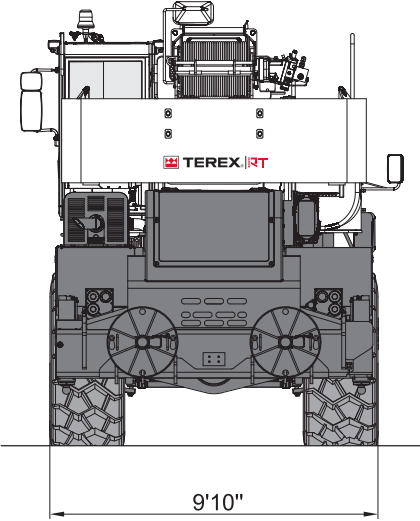
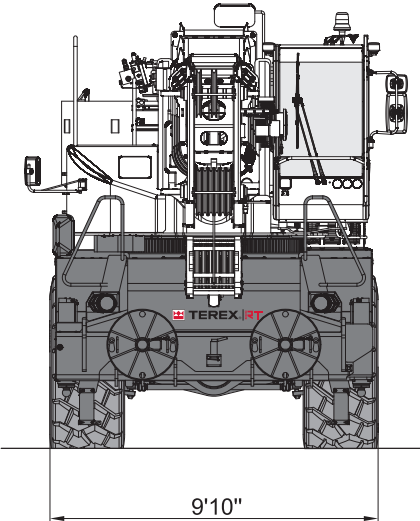


DIMENSIONS

DIMENSIONES

TRT 70US

26.5

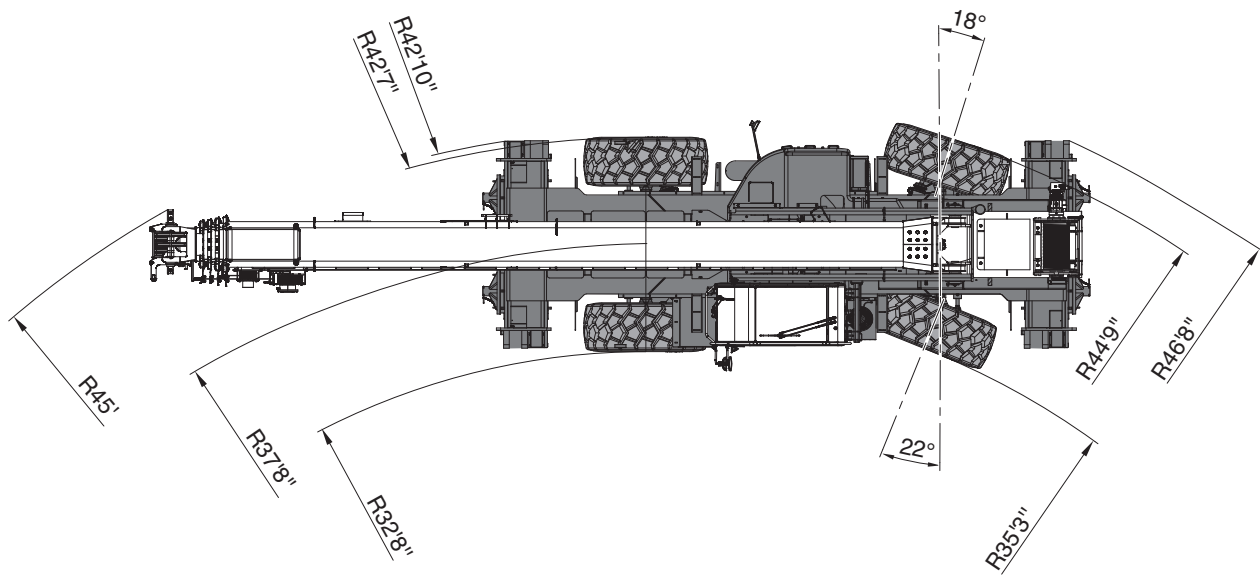
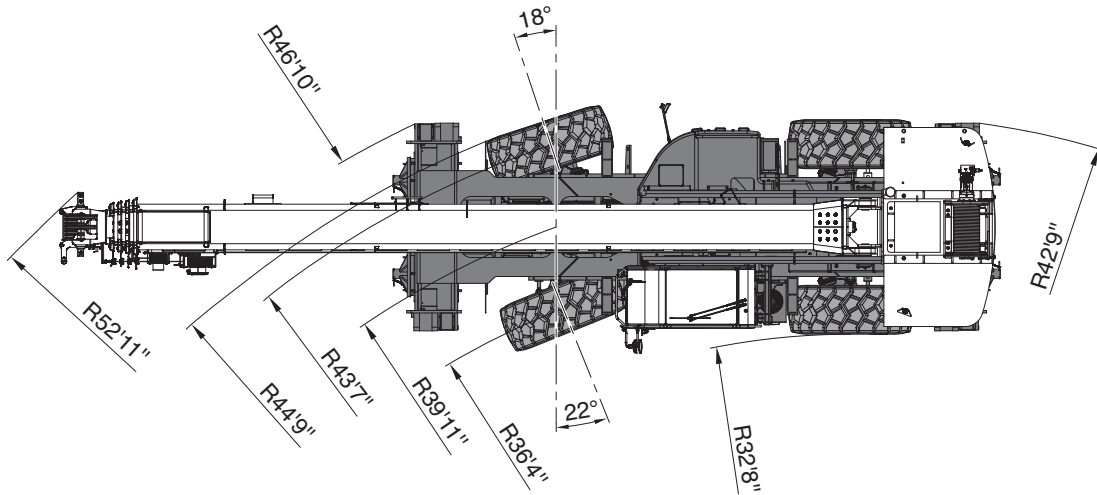


STEERING RADII

RADIOS DE DIRECCIÓN

TRT 70US

Two wheel steer · Dirección en dos ruedas

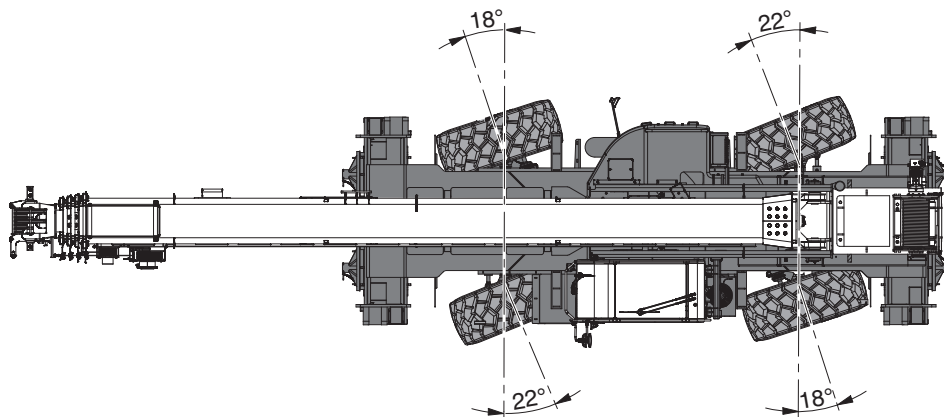
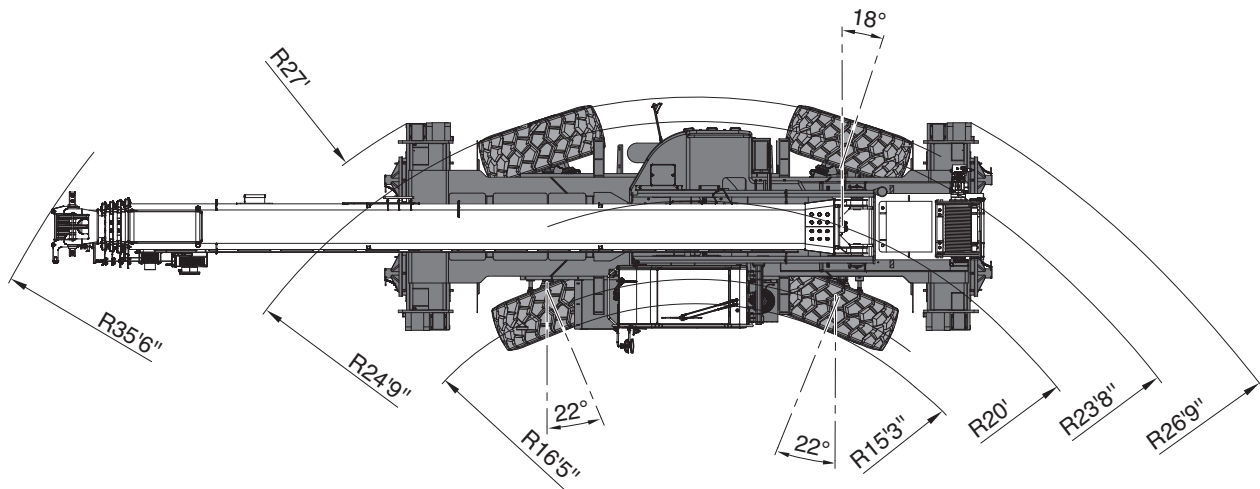


STEERING RADII

RADIOS DE DIRECCIÓN

TRT 70US

Four wheel steer · Dirección en cuatro ruedas

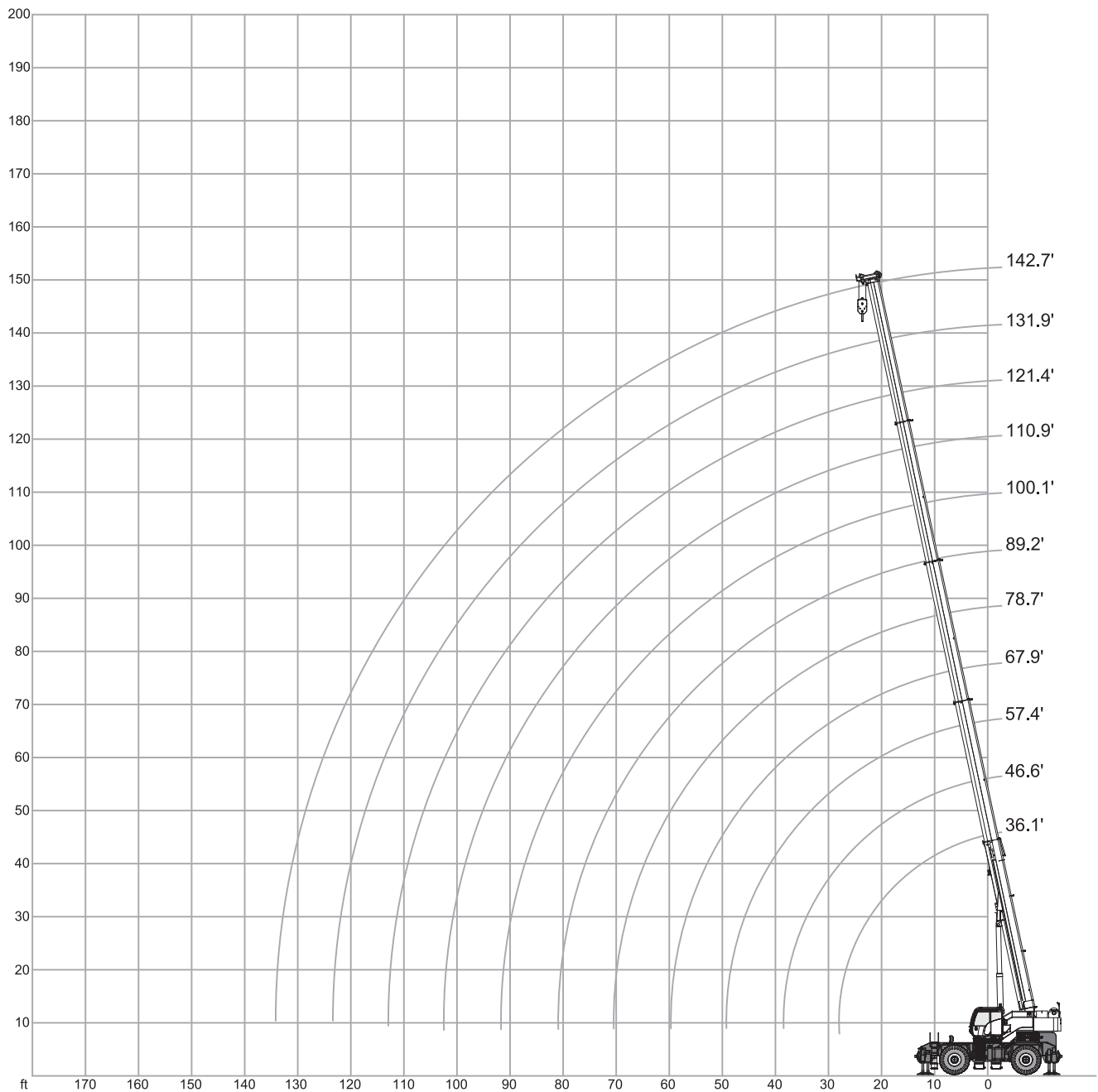
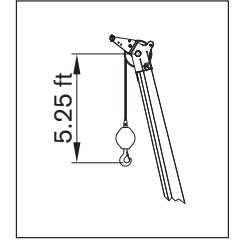
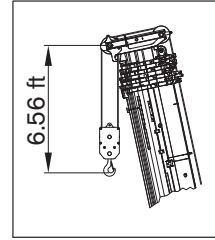


RANGE GRAPH – MAIN BOOM

TRT 70US

DIAGRAMA DE CARGA

**Mode 3:
Proportional - Proporcional**



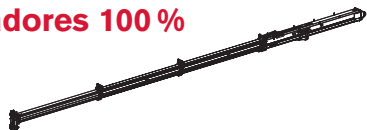
LOAD CHART – MAIN BOOM US STANDARD ASME B30.5

TRT 70US

TABLA DE CARGA

Outriggers - Estabilizadores 100 %

Mode 1:
Stability - Estabilidad



		8,820 lbs		24.0 ft x 24.0 ft		360°		US STANDARD ASME B30.5			
		36.1 ft	56.1 ft	76.1 ft	96.1 ft	116.1 ft	122.7 ft	129.3 ft	136.2 ft	142.7 ft	
ft	kip	kip	kip	kip	kip	kip	kip	kip	kip	kip	ft
8.2	140.0	41.0	-	-	-	-	-	-	-	-	8.2
9.8	132.4	41.5	-	-	-	-	-	-	-	-	9.8
11.5	118.0	41.7	40.8	-	-	-	-	-	-	-	11.5
13.1	108.1	42.1	41.0	-	-	-	-	-	-	-	13.1
14.8	99.5	42.6	41.3	40.8	-	-	-	-	-	-	14.8
16.4	92.0	43.0	41.5	41.0	-	-	-	-	-	-	16.4
19.7	79.9	44.3	42.1	38.6	30.2	29.8	-	-	-	-	19.7
23.0	70.2	46.1	41.5	34.2	29.8	29.8	29.3	24.5	-	-	23.0
26.2	58.0	51.2	37.5	30.9	27.4	28.7	29.3	24.7	22.4	-	26.2
29.5	-	45.9	34.0	28.0	24.8	26.0	27.6	22.9	21.6	-	29.5
32.8	-	38.6	31.8	25.8	22.5	23.8	25.1	21.0	20.1	-	32.8
36.1	-	32.3	29.3	23.6	20.5	21.7	23.2	18.9	18.2	-	36.1
39.4	-	27.6	27.0	21.8	18.8	20.0	21.2	17.2	16.3	-	39.4
45.9	-	20.7	21.5	18.8	15.7	17.2	18.1	14.1	13.5	-	45.9
52.5	-	-	16.8	15.9	13.6	14.4	15.6	11.8	11.3	-	52.5
59.1	-	-	13.5	13.8	11.8	12.7	13.0	10.1	9.5	-	59.1
65.6	-	-	10.9	11.3	10.4	11.0	10.6	8.6	8.1	-	65.6
72.2	-	-	-	9.3	9.0	9.0	8.6	7.3	6.7	-	72.2
78.7	-	-	-	7.6	7.9	7.4	6.9	6.2	5.7	-	78.7
85.3	-	-	-	6.3	6.6	6.2	5.7	5.3	4.7	-	85.3
91.9	-	-	-	-	5.5	5.0	4.6	4.2	3.9	-	91.9
98.4	-	-	-	-	4.5	4.1	3.6	3.3	3.0	-	98.4
105.0	-	-	-	-	3.8	3.3	2.9	2.5	2.2	-	105.0
111.5	-	-	-	-	-	2.5	2.2	1.8	1.4	-	111.5
118.1	-	-	-	-	-	-	1.5	1.2	0.9	-	118.1
124.7	-	-	-	-	-	-	-	0.7	-	-	124.7
131.2	-	-	-	-	-	-	-	-	-	-	131.2

Main counterweight: 8,820 lbs · Contrapeso principal: 8,820 lbs

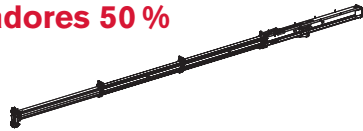
LOAD CHART – MAIN BOOM US STANDARD ASME B30.5

TRT 70US

TABLA DE CARGA

Outriggers · Estabilizadores 50 %

**Mode 1:
Stability · Estabilidad**



		8,820 lbs		16.4 ft x 24.0 ft		360°		US STANDARD ASME B30.5												
		36.1 ft		56.1 ft		76.1 ft		96.1 ft		116.1 ft		122.7 ft		129.3 ft		136.2 ft		142.7 ft		
		kip		kip		kip		kip		kip		kip		kip		kip		kip		
8.2	140.0	41.0	-	-	-	-	-	-	-	-	-	-	-	-	-	-	-	-	-	8.2
9.8	130.4	41.5	-	-	-	-	-	-	-	-	-	-	-	-	-	-	-	-	-	9.8
11.5	117.4	41.7	40.8	-	-	-	-	-	-	-	-	-	-	-	-	-	-	-	-	11.5
13.1	106.8	42.1	41.0	-	-	-	-	-	-	-	-	-	-	-	-	-	-	-	-	13.1
14.8	90.1	42.6	41.3	40.8	-	-	-	-	-	-	-	-	-	-	-	-	-	-	-	14.8
16.4	71.0	43.0	41.5	41.0	-	-	-	-	-	-	-	-	-	-	-	-	-	-	-	16.4
19.7	48.8	44.3	42.1	38.6	30.2	29.8	-	-	-	-	-	-	-	-	-	-	-	-	-	19.7
23.0	36.2	37.9	38.4	34.2	29.8	29.8	29.3	24.5	-	-	-	-	-	-	-	-	-	-	-	23.0
26.2	27.9	29.8	30.6	30.6	27.4	28.7	29.0	24.7	22.4	-	-	-	-	-	-	-	-	-	-	26.2
29.5	-	24.0	24.9	24.9	24.7	24.4	23.7	22.9	21.6	-	-	-	-	-	-	-	-	-	-	29.5
32.8	-	19.9	20.5	20.8	21.0	20.3	19.7	19.3	18.8	-	-	-	-	-	-	-	-	-	-	32.8
36.1	-	16.5	17.4	17.6	17.8	17.2	16.7	16.2	15.8	-	-	-	-	-	-	-	-	-	-	36.1
39.4	-	14.0	14.8	15.1	15.2	14.7	14.2	13.7	13.3	-	-	-	-	-	-	-	-	-	-	39.4
45.9	-	10.1	10.9	11.3	11.5	10.9	10.5	10.0	9.7	-	-	-	-	-	-	-	-	-	-	45.9
52.5	-	-	8.2	8.6	8.8	8.3	7.8	7.4	7.1	-	-	-	-	-	-	-	-	-	-	52.5
59.1	-	-	6.2	6.5	6.7	6.3	5.8	5.5	5.1	-	-	-	-	-	-	-	-	-	-	59.1
65.6	-	-	4.5	5.0	5.2	4.7	4.3	4.0	3.6	-	-	-	-	-	-	-	-	-	-	65.6
72.2	-	-	-	3.8	4.0	3.5	3.1	2.8	2.4	-	-	-	-	-	-	-	-	-	-	72.2
78.7	-	-	-	2.6	3.0	2.5	2.1	1.8	1.4	-	-	-	-	-	-	-	-	-	-	78.7
85.3	-	-	-	1.8	2.1	1.7	1.2	0.9	0.6	-	-	-	-	-	-	-	-	-	-	85.3
91.9	-	-	-	-	1.3	0.9	0.6	-	-	-	-	-	-	-	-	-	-	-	-	91.9
98.4	-	-	-	-	1.2	0.8	-	-	-	-	-	-	-	-	-	-	-	-	-	98.4
105.0	-	-	-	-	0.7	-	-	-	-	-	-	-	-	-	-	-	-	-	-	105.0

Main counterweight: 8,820 lbs · Contrapeso principal: 8,820 lbs

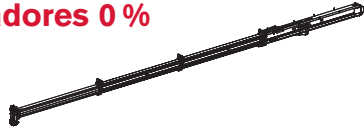
LOAD CHART – MAIN BOOM US STANDARD ASME B30.5

TRT 70US

TABLA DE CARGA

Outriggers · Estabilizadores 0 %

**Mode 1:
Stability · Estabilidad**



		8,820 lbs		8.8 ft x 24.0 ft		360°		US STANDARD ASME B30.5			
		 									
ft	kip	kip	kip	kip	kip	kip	kip	kip	kip	kip	ft
8.2	101.8	41.0	-	-	-	-	-	-	-	-	8.2
9.8	70.9	41.5	-	-	-	-	-	-	-	-	9.8
11.5	53.4	41.7	40.8	-	-	-	-	-	-	-	11.5
13.1	42.1	42.1	41.0	-	-	-	-	-	-	-	13.1
14.8	34.3	35.8	36.1	36.0	-	-	-	-	-	-	14.8
16.4	28.5	30.1	30.7	30.7	-	-	-	-	-	-	16.4
19.7	20.4	22.2	22.7	22.9	22.9	22.2	-	-	-	-	19.7
23.0	15.2	17.0	17.6	17.9	17.9	17.4	16.8	16.2	-	-	23.0
26.2	11.6	13.2	13.9	14.2	14.3	13.8	13.2	12.8	12.4	-	26.2
29.5	-	10.5	11.1	11.6	11.7	11.1	10.7	10.1	9.9	-	29.5
32.8	-	8.4	9.0	9.4	9.6	9.0	8.6	8.2	7.8	-	32.8
36.1	-	6.6	7.4	7.7	7.9	7.4	6.9	6.5	6.2	-	36.1
39.4	-	5.2	6.0	6.4	6.5	6.1	5.6	5.2	4.9	-	39.4
45.9	-	3.1	3.9	4.2	4.4	4.0	3.5	3.2	2.9	-	45.9
52.5	-	-	2.2	2.6	2.9	2.4	2.0	1.7	1.3	-	52.5
59.1	-	-	0.9	1.4	1.7	1.1	0.9	0.4	-	-	59.1
65.6	-	-	-	0.4	0.7	-	-	-	-	-	65.6

Main counterweight: 8,820 lbs · Contrapeso principal: 8,820 lbs

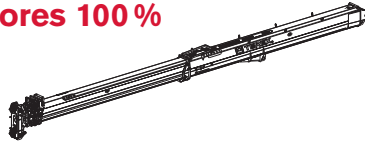
LOAD CHART – MAIN BOOM US STANDARD ASME B30.5

TRT 70US

TABLA DE CARGA

Outriggers · Estabilizadores 100 %

Mode 2:
Strength · Resistencia



8,820 lbs 24.0 ft x 24.0 ft 360° US STANDARD ASME B30.5											
	36.1 ft	42.7 ft	49.5 ft	56.1 ft		62.7 ft	82.7 ft	102.7 ft	122.7 ft	142.7 ft	
ft	kip										ft
8.2	140.0	113.6	112.1	83.8	77.9	-	-	-	-	-	8.2
9.8	132.4	117.8	113.4	76.7	70.6	-	-	-	-	-	9.8
11.5	118.0	117.4	114.7	70.2	64.9	40.6	-	-	-	-	11.5
13.1	108.1	107.4	103.7	65.0	59.7	40.8	-	-	-	-	13.1
14.8	99.5	98.8	94.9	60.2	55.2	41.0	-	-	-	-	14.8
16.4	92.0	91.5	88.2	56.0	51.2	41.3	40.1	-	-	-	16.4
19.7	79.9	79.2	75.5	49.2	44.6	39.0	35.5	32.6	-	-	19.7
23.0	70.2	69.5	65.1	43.5	39.3	34.3	31.8	29.7	-	-	23.0
26.2	58.0	55.8	54.4	38.8	34.9	30.6	28.0	26.3	22.4	-	26.2
29.5	-	43.7	42.5	34.9	31.1	27.2	25.0	23.6	21.6	-	29.5
32.8	-	35.3	34.3	31.5	28.0	24.5	22.5	21.2	20.1	-	32.8
36.1	-	-	28.1	27.6	25.3	22.1	20.3	19.1	18.2	-	36.1
39.4	-	-	23.5	22.8	22.4	20.1	18.4	17.3	16.3	-	39.4
45.9	-	-	-	16.3	15.9	16.2	14.9	14.1	13.5	-	45.9
52.5	-	-	-	-	11.5	13.3	12.5	11.8	11.3	-	52.5
59.1	-	-	-	-	-	10.0	10.5	9.9	9.5	-	59.1
65.6	-	-	-	-	-	7.6	8.6	8.4	8.1	-	65.6
72.2	-	-	-	-	-	5.7	6.7	7.1	6.7	-	72.2
78.7	-	-	-	-	-	-	5.2	5.8	5.7	-	78.7
85.3	-	-	-	-	-	-	3.9	4.5	4.7	-	85.3
91.9	-	-	-	-	-	-	2.8	3.4	3.9	-	91.9
98.4	-	-	-	-	-	-	-	2.5	3.0	-	98.4
105.0	-	-	-	-	-	-	-	1.8	2.2	-	105.0
111.5	-	-	-	-	-	-	-	1.0	1.4	-	111.5
118.1	-	-	-	-	-	-	-	-	0.9	-	118.1

Main counterweight: 8,820 lbs · Contrapeso principal: 8,820 lbs



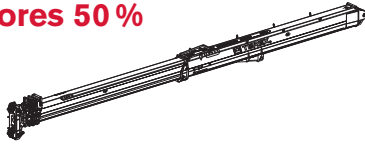
LOAD CHART – MAIN BOOM US STANDARD ASME B30.5

TRT 70US

TABLA DE CARGA

Outriggers · Estabilizadores 50 %

**Mode 2:
Strength · Resistencia**



		8,820 lbs		16.4 ft x 24.0 ft		360°		US STANDARD ASME B30.5			
		36.1 ft	42.7 ft	49.5 ft	56.1 ft	62.7 ft	82.7 ft	102.7 ft	122.7 ft	142.7 ft	
ft	kip	kip	kip	kip	kip	kip	kip	kip	kip	kip	ft
8.2	140.0	113.6	112.1	83.8	77.9	-	-	-	-	-	8.2
9.8	130.4	117.8	113.4	76.5	70.6	-	-	-	-	-	9.8
11.5	117.4	116.5	114.7	70.2	64.9	40.6	-	-	-	-	11.5
13.1	106.8	105.9	103.7	64.9	59.6	40.8	-	-	-	-	13.1
14.8	90.1	87.0	84.6	60.2	55.2	41.0	-	-	-	-	14.8
16.4	71.0	68.7	66.8	56.0	51.2	41.3	40.1	-	-	-	16.4
19.7	48.8	47.1	45.7	44.6	43.7	39.0	35.5	32.6	-	-	19.7
23.0	36.2	34.7	33.6	32.8	32.0	34.0	31.8	29.6	-	-	23.0
26.2	27.9	26.7	25.9	25.0	24.4	26.3	27.1	26.3	22.4	-	26.2
29.5	-	21.1	20.3	19.6	19.0	20.8	21.8	22.5	21.6	-	29.5
32.8	-	16.9	16.3	15.6	15.0	16.9	17.8	18.4	18.8	-	32.8
36.1	-	-	13.0	12.5	12.0	13.8	14.8	15.3	15.8	-	36.1
39.4	-	-	10.5	9.9	9.6	11.4	12.2	12.9	13.3	-	39.4
45.9	-	-	-	6.3	5.8	7.6	8.6	9.3	9.7	-	45.9
52.5	-	-	-	-	3.3	5.1	6.0	6.6	7.1	-	52.5
59.1	-	-	-	-	-	3.1	4.1	4.6	5.1	-	59.1
65.6	-	-	-	-	-	1.5	2.5	3.2	3.6	-	65.6
72.2	-	-	-	-	-	-	1.3	2.0	2.4	-	72.2
78.7	-	-	-	-	-	-	-	1.0	1.4	-	78.7
85.3	-	-	-	-	-	-	-	-	0.6	-	85.3
91.9	-	-	-	-	-	-	-	-	-	-	91.9

Main counterweight: 8,820 lbs · Contrapeso principal: 8,820 lbs

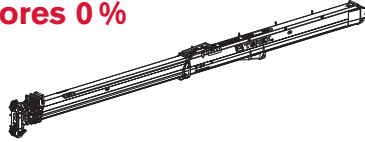
LOAD CHART – MAIN BOOM US STANDARD ASME B30.5

TRT 70US

TABLA DE CARGA

Outriggers · Estabilizadores 0 %

**Mode 2:
Strength · Resistencia**



		8,820 lbs		8.8 ft x 24.0 ft		360°		US STANDARD ASME B30.5				
		36.1 ft	42.7 ft	49.5 ft	56.1 ft	62.7 ft	82.7 ft	102.7 ft	122.7 ft	142.7 ft		
ft	kip	kip	kip	kip	kip	kip	kip	kip	kip	kip	ft	
8.2	101.8	99.3	94.4	83.8	77.9	-	-	-	-	-	8.2	
9.8	70.9	68.7	66.1	64.6	62.7	-	-	-	-	-	9.8	
11.5	53.4	51.4	49.6	48.3	47.5	40.6	-	-	-	-	11.5	
13.1	42.1	40.4	39.0	37.9	37.1	38.5	-	-	-	-	13.1	
14.8	34.3	32.8	31.9	30.7	29.9	31.4	-	-	-	-	14.8	
16.4	28.5	27.2	26.0	25.3	24.6	26.3	26.9	-	-	-	16.4	
19.7	20.4	19.3	18.4	17.9	17.1	18.9	19.7	20.3	-	-	19.7	
23.0	15.2	14.2	13.3	12.8	12.2	14.0	14.9	15.4	-	-	23.0	
26.2	11.6	10.5	9.8	9.3	8.8	10.5	11.5	12.0	12.4	-	26.2	
29.5	-	7.8	7.2	6.6	6.2	7.8	8.8	9.4	9.9	-	29.5	
32.8	-	5.6	5.1	4.5	4.2	5.8	6.8	7.4	7.8	-	32.8	
36.1	-	-	3.4	3.0	2.5	4.2	5.2	5.7	6.2	-	36.1	
39.4	-	-	2.0	1.5	1.2	2.9	3.9	4.4	4.9	-	39.4	
45.9	-	-	-	-	-	0.9	1.8	2.4	2.9	-	45.9	
52.5	-	-	-	-	-	-	-	0.9	1.3	-	52.5	

Main counterweight: 8,820 lbs · Contrapeso principal: 8,820 lbs

LOAD CHART – MAIN BOOM US STANDARD ASME B30.5

TRT 70US

TABLA DE CARGA

Outriggers · Estabilizadores 100%

Mode 3:

Proportional · Proporcional



		8,820 lbs		24.0 ft x 24.0 ft		360°		US STANDARD ASME B30.5					
ft	kip	kip	kip	kip	kip	kip	kip	kip	kip	kip	kip	kip	ft
8.2	140.0	42.1	41.5	-	-	-	-	-	-	-	-	-	8.2
9.8	132.4	42.6	41.7	41.3	-	-	-	-	-	-	-	-	9.8
11.5	118.0	43.0	42.1	41.5	39.3	-	-	-	-	-	-	-	11.5
13.1	108.1	43.7	42.4	41.7	40.3	40.6	-	-	-	-	-	-	13.1
14.8	99.5	44.3	42.8	42.1	41.5	41.3	-	-	-	-	-	-	14.8
16.4	92.0	45.2	43.2	42.4	41.9	41.5	40.8	-	-	-	-	-	16.4
19.7	79.9	51.2	44.3	43.0	42.4	41.9	41.0	36.2	-	-	-	-	19.7
23.0	70.2	54.3	45.9	43.9	43.0	42.4	41.3	32.0	30.3	29.1	-	-	23.0
26.2	58.0	57.8	51.2	45.0	43.2	42.8	39.3	28.5	26.9	25.9	22.4	-	26.2
29.5	-	45.6	45.7	45.8	43.7	39.8	36.6	25.4	24.0	23.2	21.6	-	29.5
32.8	-	37.1	37.3	37.3	37.3	36.4	33.3	22.7	21.6	20.8	20.1	-	32.8
36.1	-	30.9	31.2	31.2	31.2	31.2	30.7	20.7	19.6	18.9	18.2	-	36.1
39.4	-	-	26.4	26.5	26.6	26.6	26.5	18.9	17.9	17.0	16.3	-	39.4
45.9	-	-	19.6	19.7	19.9	20.1	20.0	15.4	14.7	14.0	13.5	-	45.9
52.5	-	-	-	15.2	15.3	15.4	15.4	13.0	12.4	11.8	11.3	-	52.5
59.1	-	-	-	11.9	12.0	12.1	12.1	11.0	10.4	9.9	9.5	-	59.1
65.6	-	-	-	-	9.5	9.6	9.7	9.4	8.9	8.4	8.1	-	65.6
72.2	-	-	-	-	-	7.6	7.7	7.8	7.6	7.2	6.7	-	72.2
78.7	-	-	-	-	-	6.1	6.1	6.2	6.2	6.1	5.7	-	78.7
85.3	-	-	-	-	-	-	4.9	4.9	5.0	5.0	4.7	-	85.3
91.9	-	-	-	-	-	-	3.8	3.8	3.9	3.9	3.9	-	91.9
98.4	-	-	-	-	-	-	-	2.9	2.9	3.0	3.0	-	98.4
105.0	-	-	-	-	-	-	-	-	2.1	2.1	2.2	-	105.0
111.5	-	-	-	-	-	-	-	-	1.4	1.4	1.4	-	111.5
118.1	-	-	-	-	-	-	-	-	-	0.9	0.9	-	118.1
124.7	-	-	-	-	-	-	-	-	-	-	0.8	-	124.7
131.2	-	-	-	-	-	-	-	-	-	-	-	-	131.2

Main counterweight: 8,820 lbs · Contrapeso principal: 8,820 lbs

LOAD CHART – MAIN BOOM US STANDARD ASME B30.5

TRT 70US

TABLA DE CARGA

Outriggers · Estabilizadores 50 %

Mode 3:

Proportional · Proporcional



		8,820 lbs		16.4 ft x 24.0 ft		360°		US STANDARD ASME B30.5					
ft	kip	kip	kip	kip	kip	kip	kip	kip	kip	kip	kip	kip	ft
8.2	140.0	42.1	41.5	-	-	-	-	-	-	-	-	-	8.2
9.8	130.4	42.6	41.7	41.3	-	-	-	-	-	-	-	-	9.8
11.5	117.4	43.0	42.1	41.5	39.3	-	-	-	-	-	-	-	11.5
13.1	106.8	43.7	42.4	41.7	40.3	40.6	-	-	-	-	-	-	13.1
14.8	90.1	44.3	42.8	42.1	41.5	41.3	-	-	-	-	-	-	14.8
16.4	71.0	45.2	43.2	42.4	41.9	41.5	40.8	-	-	-	-	-	16.4
19.7	48.8	49.1	44.3	43.0	42.4	41.9	41.0	36.2	-	-	-	-	19.7
23.0	36.2	36.5	36.6	36.6	36.4	36.4	36.1	32.0	30.3	29.1	-	-	23.0
26.2	27.9	28.5	28.6	28.7	28.6	28.6	28.5	28.3	26.9	25.9	22.4	-	26.2
29.5	-	22.7	22.9	23.1	23.1	23.1	23.1	22.9	22.8	22.7	21.6	-	29.5
32.8	-	18.5	18.8	19.0	19.0	19.0	19.0	19.0	18.9	18.9	18.8	-	32.8
36.1	-	15.2	15.7	15.8	15.8	16.0	15.9	15.9	15.8	15.8	15.8	-	36.1
39.4	-	-	13.0	13.2	13.2	13.3	13.5	13.5	13.5	13.5	13.3	-	39.4
45.9	-	-	9.2	9.4	9.6	9.6	9.6	9.7	9.7	9.7	9.7	-	45.9
52.5	-	-	-	6.7	6.8	6.9	6.9	7.1	7.1	7.1	7.1	-	52.5
59.1	-	-	-	4.6	4.9	5.0	5.1	5.1	5.1	5.1	5.1	-	59.1
65.6	-	-	-	-	3.3	3.4	3.4	3.5	3.5	3.5	3.6	-	65.6
72.2	-	-	-	-	-	2.1	2.2	2.3	2.3	2.3	2.4	-	72.2
78.7	-	-	-	-	-	1.1	1.2	1.3	1.3	1.3	1.4	-	78.7
85.3	-	-	-	-	-	-	-	0.4	0.6	0.6	0.6	-	85.3
91.9	-	-	-	-	-	-	-	-	-	-	-	-	91.9

Main counterweight: 8,820 lbs · Contrapeso principal: 8,820 lbs

LOAD CHART – MAIN BOOM US STANDARD ASME B30.5

TRT 70US

TABLA DE CARGA

Outriggers · Estabilizadores 0 %

Mode 3:

Proportional · Proporcional



		8,820 lbs		8.8 ft x 24.0 ft		360°		US STANDARD ASME B30.5					
ft	kip	kip	kip	kip	kip	kip	kip	kip	kip	kip	kip	kip	ft
8.2	101.8	42.1	41.5	-	-	-	-	-	-	-	-	-	8.2
9.8	70.9	42.6	41.7	41.3	-	-	-	-	-	-	-	-	9.8
11.5	53.4	43.0	42.1	41.5	39.3	-	-	-	-	-	-	-	11.5
13.1	42.1	42.2	42.1	41.7	40.1	40.6	-	-	-	-	-	-	13.1
14.8	34.3	34.5	34.5	34.6	34.2	33.9	-	-	-	-	-	-	14.8
16.4	28.5	29.0	29.0	28.8	28.7	28.6	28.3	-	-	-	-	-	16.4
19.7	20.4	21.0	21.1	21.1	21.1	21.1	21.0	20.8	-	-	-	-	19.7
23.0	15.2	15.7	16.0	16.0	16.1	16.1	16.0	16.0	15.9	15.9	-	-	23.0
26.2	11.6	12.1	12.2	12.4	12.5	12.5	12.5	12.5	12.5	12.4	12.4	-	26.2
29.5	-	9.4	9.6	9.7	9.8	9.8	9.9	9.9	9.9	9.9	9.9	-	29.5
32.8	-	7.1	7.4	7.6	7.8	7.8	7.8	7.8	7.8	7.8	7.8	-	32.8
36.1	-	5.4	5.7	6.0	6.1	6.1	6.2	6.2	6.2	6.2	6.2	-	36.1
39.4	-	-	4.3	4.5	4.6	4.7	4.9	4.9	4.9	4.9	4.9	-	39.4
45.9	-	-	2.2	2.4	2.5	2.6	2.8	2.8	2.8	2.9	2.9	-	45.9
52.5	-	-	-	0.9	1.0	1.1	1.2	1.2	1.3	1.3	1.3	-	52.5

Main counterweight: 8,820 lbs · Contrapeso principal: 8,820 lbs

LOAD CHART – MAIN BOOM US STANDARD ASME B30.5

TRT 70US

TABLA DE CARGA

On Tires · Sobre neumáticos

Mode 3:

Proportional · Proporcional



		8,820 lbs		0 mph		US STANDARD ASME B30.5				
		36.1 ft	41.3 ft	46.9 ft	52.2 ft	57.4 ft	62.7 ft	68.2 ft		
		kip	kip	kip	kip	kip	kip	kip		
ft	kip	kip	kip	kip	kip	kip	kip	kip	ft	
8.2	-	-	-	-	-	-	-	-	8.2	
9.8	-	-	-	-	-	-	-	-	9.8	
11.5	32.2	-	-	-	-	-	-	-	11.5	
13.1	26.3	25.8	-	-	-	-	-	-	13.1	
14.8	22.1	21.6	-	-	-	-	-	-	14.8	
16.4	18.8	18.5	18.3	-	-	-	-	-	16.4	
19.7	13.9	13.9	13.7	13.5	-	-	-	-	19.7	
23.0	10.6	10.6	10.4	10.4	10.1	-	-	-	23.0	
26.2	8.2	8.2	8.2	7.9	7.9	7.9	-	-	26.2	
29.5	-	6.2	6.2	6.2	6.2	6.2	6.2	6.2	29.5	
32.8	-	4.9	4.9	4.9	4.9	4.9	4.9	4.6	32.8	
36.1	-	-	3.8	3.8	3.8	3.8	3.8	3.8	36.1	
39.4	-	-	-	2.6	2.6	2.6	2.6	2.6	39.4	
45.9	-	-	-	-	1.3	1.3	1.3	1.3	45.9	
52.5	-	-	-	-	-	-	-	-	52.5	

Main counterweight: 8,820 lbs · Contrapeso principal: 8,820 lbs

LOAD CHART – MAIN BOOM US STANDARD ASME B30.5

TRT 70US

TABLA DE CARGA

On Tires · Sobre neumáticos

Mode 3:

Proportional · Proporcional



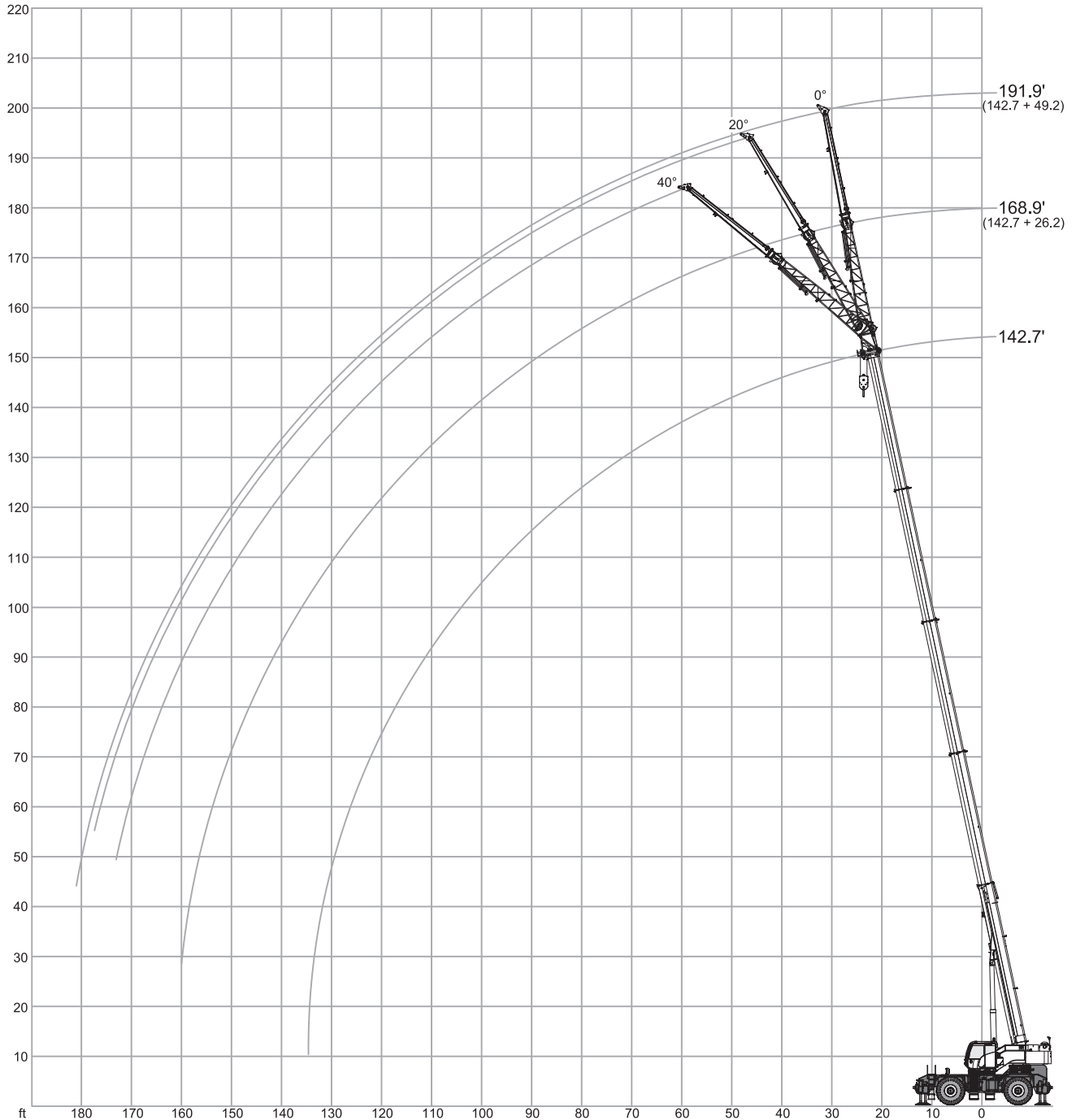
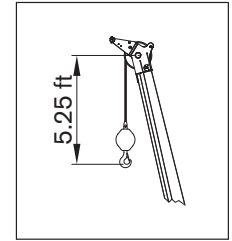
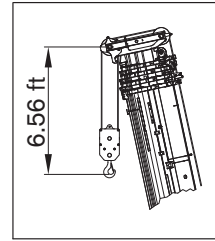
		8,820 lbs		1.2 mph		US STANDARD ASME B30.5						
ft	kip	kip	kip	kip	kip	kip	kip	kip	kip	kip	kip	ft
8.2	36.4	36.4	36.4	36.4	36.4	36.4	-	-	-	-	-	8.2
9.8	35.1	36.4	36.4	36.4	36.4	36.4	36.4	36.4	36.4	-	-	9.8
11.5	31.3	31.5	31.5	31.8	31.8	32.0	32.0	32.0	32.0	32.0	-	11.5
13.1	28.0	28.2	28.5	28.7	28.7	28.7	28.9	28.9	28.9	28.9	28.9	13.1
14.8	25.4	25.6	25.8	25.8	26.0	26.0	26.0	26.3	26.3	26.3	26.3	14.8
16.4	23.2	23.4	23.4	23.6	23.6	23.8	23.8	23.8	23.8	23.8	23.8	16.4
19.7	19.2	19.4	19.4	19.6	19.6	19.9	19.9	19.9	19.9	19.9	19.9	19.7
23.0	16.1	16.3	16.3	16.5	16.5	16.8	16.8	16.8	16.8	16.8	17.0	23.0
26.2	13.5	13.7	13.9	14.1	13.9	14.1	14.1	14.1	14.1	14.1	14.1	26.2
29.5	-	11.5	11.7	11.9	11.9	11.9	12.1	12.1	12.1	12.1	12.1	29.5
32.8	-	9.7	9.9	10.1	10.4	10.4	10.4	10.4	10.4	10.6	10.8	32.8
36.1	-	-	8.6	8.8	8.8	8.8	9.0	9.3	9.3	9.3	9.0	36.1
39.4	-	-	-	7.5	7.7	7.9	7.9	7.7	7.7	7.7	7.7	39.4
45.9	-	-	-	-	5.7	5.7	5.5	5.5	5.5	5.5	5.5	45.9
52.5	-	-	-	-	-	4.0	4.0	4.0	3.8	3.8	3.8	52.5
59.1	-	-	-	-	-	-	2.6	2.6	2.6	2.6	2.6	59.1
65.6	-	-	-	-	-	-	-	-	1.5	1.5	1.5	65.6
72.2	-	-	-	-	-	-	-	-	-	0.7	0.7	72.2
78.7	-	-	-	-	-	-	-	-	-	-	-	78.7

Main counterweight: 8,820 lbs · Contrapeso principal: 8,820 lbs

RANGE GRAPH - JIB

DIAGRAMA DE CARGA

TRT 70US



LOAD CHART – JIB US STANDARD ASME B30.5

TRT 70US

TABLA DE CARGA

Outriggers · Estabilizadores 100 %

		8,820 lbs		24.0 ft x 24.0 ft		360°		US STANDARD ASME B30.5	
		Boom · Pluma 100 %			Boom · Pluma 100 %				
		142 ft + 26 ft			142 ft + 49 ft				
		0°	20°	40°	0°	20°	40°		
		kip	kip	kip	kip	kip	kip		
ft								ft	
39.4		11.9	-	-	-	-	-	39.4	
45.9		11.3	9.3	-	6.2	-	-	45.9	
52.5		9.7	8.6	-	6.2	-	-	52.5	
59.1		7.9	7.9	7.1	6.4	-	-	59.1	
65.6		6.6	7.1	6.6	6.2	4.6	-	65.6	
72.2		5.7	5.7	6.0	5.3	4.4	4.0	72.2	
78.7		5.3	4.4	5.1	4.4	4.2	3.8	78.7	
85.3		4.4	3.5	4.2	3.5	4.0	3.5	85.3	
91.9		3.5	2.6	3.1	2.9	3.5	3.5	91.9	
98.4		2.6	1.8	2.2	2.3	2.9	3.3	98.4	
105.0		1.8	1.1	1.5	1.7	2.2	2.9	105.0	
111.5		1.3	0.7	0.9	1.2	1.9	2.2	111.5	
118.1		0.7	0.4	0.4	0.8	1.3	1.8	118.1	
124.7		-	-	-	0.3	0.9	1.2	124.7	
131.2		-	-	-	-	0.4	0.8	131.2	
137.8		-	-	-	-	-	0.3	137.8	
144.4		-	-	-	-	-	-	144.4	






Main counterweight: 8,820 lbs · Contrapeso principal: 8,820 lbs

TECHNICAL SPECIFICATIONS







TRT 70US

ESPECIFICACIÓN TÉCNICA




Boom · Pluma

	5 sections · 5 secciones	
	Three modes · Tres modos	
	Min. / Max. · Min. / Máx.	36.1 ft / 142.7 ft
	Max. main boom · Máx. pluma principal	151 ft
	Boom luffing angle range (min. / max.) · Ángulos de elevación de la pluma (mín. / máx.)	-2° / +78°
	Boom raising / lowering time⁽¹⁾ · Tiempo de elevación / descenso de la pluma ⁽¹⁾	60 s / 65 s
	Boom extension / retraction time⁽¹⁾ · Tiempo de extensión / retracción de la pluma ⁽¹⁾	120 s / 125 s

Hoist · Cabrestante

	Hydraulic motor · Motor hidráulico Rope roller device · Sistema de tensado de cable Normally engaged brake · Freno activado en estado normal	
	2 speeds · 2 velocidades	
	Max.⁽¹⁾ · Máx.⁽¹⁾	338 ft/min.
	Rotational resistant · Antirotación	
		3/4 in.
		771 ft
	Permissible line pull · Tracción de cable admisible	15,062 lbs

Upper Structure · Superestructura

	Main counterweight ASME B30.5 · Contrapeso principal ASME B30.5	8,820 lbs
	Non stop · Sin fin	360°
	Maximum speed⁽¹⁾ · Velocidad máxima ⁽¹⁾	1.0 rpm
	Hydraulic motor · Motor hidráulico Planetary reducer · Reductor planetario	

Cab and Controls · Cabina y controles



S-space cab · Cabina S-space:

Sliding door · Puerta deslizante

Wide visibility · Amplia visibilidad

Front and upper window with windscreen wiper · Luna frontal y superior con limpiaparabrisas

Upper windows can be opened · Lunas superiores con apertura

Tilttable cab up to 17° · Cabina abatible hasta 17°

Fully adjustable seat onto shockproof suspensions · Asiento totalmente ajustable con suspensión anti-impacto

Equipped with tilttable arm rests with integrated hand controls for crane operation · Equipado con apoyabrazos abatible con controles integrados para operación de grúa

Emergency engine stop · Parada de emergencia del motor

Radio with CD player and USB port · Radio con reproductor de CD y puerto usb

Seat belts · Cinturones de seguridad



Climatized cab · Cabina climatizada

Air-conditioning · Climatización



TEOS – Terex Operating System. Electronic control with 10" touch screen display · TEOS – Sistema Operativo Terex. Control electrónico con pantalla táctil de 10"

Electro-proportional joysticks · Joystick electroproporcionados



Adjustable working LED lights outside the cab (3 lights) · Luces de trabajo LED ajustables en el exterior de la cabina (3 luces)



T-LINK Telematics · Sistema telemático T-LINK

Carrier · Chasis



Cummins QSB6.7 Stage V – Tier 4f · Cummins QSB6.7 Stage V – Tier 4f

No. of cylinders · Nº cilindros

6

Rated power · Potencia nominal

225 hp @ 2200 rpm

Maximum gross torque · Par de fuerza máx.

875 lbs/ft @ 1300 rpm

Fuel tank capacity · Volumen depósito combustible

79 gallons

Diesel Exhaust Fluid (DEF) · AdBlue (DEF)

10 gallons



4 wheel drive permanent · Tracción permanente en las 4 ruedas



Front wheel steering · Dirección en las ruedas delanteras

Rear wheel steering · Dirección en las ruedas traseras

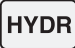


Four wheel steering concentric · Dirección en las cuatro ruedas, concéntrica

Four wheel steering crab · Dirección en las cuatro ruedas, modo cangrejo

TECHNICAL SPECIFICATIONS

TRT 70US


ESPECIFICACIÓN TÉCNICA

	One triple pump: first section piston pump, second and third gear pumps · Una bomba triple: primera sección bomba de pistón, segunda y tercera, bombas de engranajes	
	Electric circuit with two batteries 12 V / 140 Ah · Circuito eléctrico con dos baterías 12 V / 140 Ah	24 V
	Rear axle differential lock · Bloqueo diferencial eje trasero	





Vehicle Performance · Prestaciones del vehículo

	Max.⁽²⁾ · Máx.⁽²⁾	65 %
	Max.⁽²⁾ · Máx.⁽²⁾	19 mph
	Min. / Max. · Min. / Máx.	-4° F / 113° F

Tires · Neumáticos

	Earth moving style · Para movimiento de tierra	26.5
---	--	------









Options · Opciones

	Single sheave · Una polea	
	2-section jib · Plumín de 2 secciones: Side stowable · Almacenable lateralmente Angular offsets · Inclinación	26 ft / 49 ft 0° / 20° / 40°
	Cameras · Cámaras Radio remote controller · Mando a distancia por radio	
	Hydraulic motor · Motor hidráulico Rope roller device · Sistema de tensado de cable Normally engaged brake · Freno activado en estado normal	
	2 speeds · 2 velocidades Max.⁽¹⁾ · Máx.⁽¹⁾	338 ft/min.

TECHNICAL SPECIFICATIONS

TRT 70US

ESPECIFICACIÓN TÉCNICA

	Rotational resistant · Antirotación	
		3/4 in.
		771 ft
	Permissible line pull · Tracción de cable admisible	15,062 lbs
	Outrigger control from the ground · Control externo de los apoyos estabilizadores	
	Cummins QSB6.7 Stage IIIA - Tier 3 · Cummins QSB6.7 Stage IIIA - Tier 3	
	No. of cylinders · N ^o cilindros	6
	Rated power · Potencia nominal	220 hp @ 2200 rpm
	Maximum gross torque · Par de fuerza máx.	700 lbs/ft @ 1500 rpm
	Fuel tank capacity · Volumen depósito combustible	79 gallons
	Kit for engine pre-warming · Kit de precalentamiento del motor	
	Spare wheel · Rueda de repuesto	
Emergency engine stop on carrier · Parada de emergencia del motor en el chasis		
Spark arrestor on exhaust pipe muffler · Parachispas en el silenciador del tubo de escape		
Anemometer · Anemómetro		
Rear towing hook · Eganche de remolque		
Wooden box for cab protection in sea shipment · Caja de madera para proteger la cabina para el transporte marítimo		
Removable parts disassembling and put into wooden box tied to the crane · Desmontaje de las piezas desmontables y colocación en caja de madera fijada a la grúa		
Anti-corrosive protective waxing for sea shipping · Aplicación de cera de protección para el transporte marítimo		
Special customer paint of all boom elements · Pintura especial en todas las secciones de la pluma		
Special heavy painting suitable for corrosive environments · Pintura especial para ambientes corrosivos		

Note: refer to your local dealer for a full list of options.

(1) Indicative value only for reference.

(2) Standard crane in travelling configuration – value calculated with nominal tire radius and max power delivered to the wheels.

Nota: consulte la lista completa de opciones en su distribuidor local.



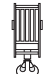
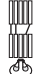
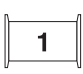
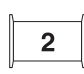


(1) Valor indicativo, sólo de referencia.

(2) Grúa estándar en configuración de marcha – valor calculado considerando el radio nominal del neumático y máxima potencia en las ruedas.

TECHNICAL SPECIFICATIONS

TRT 70US

ESPECIFICACIÓN TÉCNICA

								
							Standard	Optional
							Estándar	Opcional
70 USt	6	12	•			•	•	
70 USt	6	12	•		•			•
22 USt	1	3	•	•				•
11 USt	0	1	•	•				•

NOTES TO LIFTING CAPACITY

TRT 70US

NOTAS SOBRE LA CAPACIDAD DE ELEVACIÓN

Weight of hook blocks and slings is considered part of the load and must be subtracted from the capacity ratings. Consult operation manual for further details.

Note: Data published herein is intended as a guideline only and shall not be construed to warrant applicability for lifting purposes. For actual crane operation refer to the computer charts and the operating manual, both of which are supplied with the crane.

Los pesos de los ganchos y las eslingas se consideran parte de la carga y tienen que ser restados de las capacidades nominales. Consulte el manual de instrucciones para más detalles.

Nota: Los datos publicados se proporcionan a título informativo, por tanto, no se consideraran vinculantes a los efectos de la garantía de la capacidad de elevación.

Para operar la grúa deben cumplirse las tablas originales y el manual de instrucciones suministrados con la grúa.

Lined area for notes.

A large rectangular area with horizontal lines, intended for taking notes. The lines are evenly spaced and cover the majority of the page's width and height.

TEREX ROUGH TERRAIN CRANES

Terex USA, LLC
3147 South 17th Street - Suite 100
Wilmington, NC 28412
Ph: +1-877-698-3739
Email: mktg.cranes@terex.com

April 2024. Product specifications and prices are subject to change without notice or obligation. The photographs and/or drawings in this document are for illustrative purposes only. Refer to the appropriate Operator's Manual for instructions on the proper use of this equipment. Failure to follow the corresponding Operator's Manual when using our equipment or to otherwise act responsibly may result in serious injury or death. The only warranty applicable to our equipment is the standard written warranty applicable to the particular product and sale and Terex makes no other warranty, express or implied. Products and services listed may be trademarks, service marks or trade-names of Terex Corporation and/or its subsidiaries in the USA and other countries. All rights are reserved. Terex, the Terex Crown design and Works For You are trademarks of Terex Corporation or its subsidiaries.

Abril 2024. Las especificaciones y los precios de los productos están sujetos a cambios sin necesidad de previo aviso ni ninguna otra obligación. Las fotografías y/o dibujos de este documento tienen un fin meramente ilustrativo. Consulte el correspondiente manual de instrucciones del operario para obtener más información sobre el uso correcto de esta maquinaria. No respetar el manual del operario al utilizar la maquinaria o actuar de forma irresponsable puede provocar lesiones graves e incluso mortales. La única garantía aplicable a nuestra maquinaria es la garantía escrita estándar de cada producto y venta. Terex no amplía dicha garantía de forma expresa ni implícita. Los productos y servicios mencionados pueden ser marcas comerciales, marcas de servicio o nombres de marca de Terex Corporation o de alguna de sus filiales en Estados Unidos y otros países. Todos los derechos reservados. Terex, el diseño de la corona Terex y Works For You son marcas registradas de Terex Corporation o de sus filiales.



www.terex.com/rough-terrain-cranes

Brochure Reference: RT-DS-I-E/S-TRT70US-04/24



WORKS FOR YOU.™