



TRT 80US
80 US capacity class
Rough terrain crane
Datasheet
imperial



TRT 80US

WORKS FOR YOU.™

CONTENTS

TRT 80US

INDICE

	Page · Página:
Key · Lejenda	3
Highlights · Características destacadas	4
Weights · Pesos	5
Dimensions · Dimensiones	6-7
Steering Radii · Radios de dirección	8-9
Range Graph – Main Boom · Diagrama de carga	10
Load Chart – Main Boom. US STANDARD ASME B30.5 · Tabla de carga	11-21
Range Graph – Jib · Diagrama de carga	22
Load Chart – Jib. US STANDARD ASME B30.5 · Tabla de carga	23
Technical Specifications · Especificación técnica	
Boom · Pluma	24
Hoist · Cabrestante	24
Upper Structure · Superestructura	24
Cab and Controls · Cabina y controles	25
Carrier · Chasis	25-26
Vehicle Performance · Prestaciones del vehículo.....	26
Tires · Neumáticos	26
Options · Opciones	26-27
Notes to lifting capacity · Notas sobre la capacidad de elevación	29

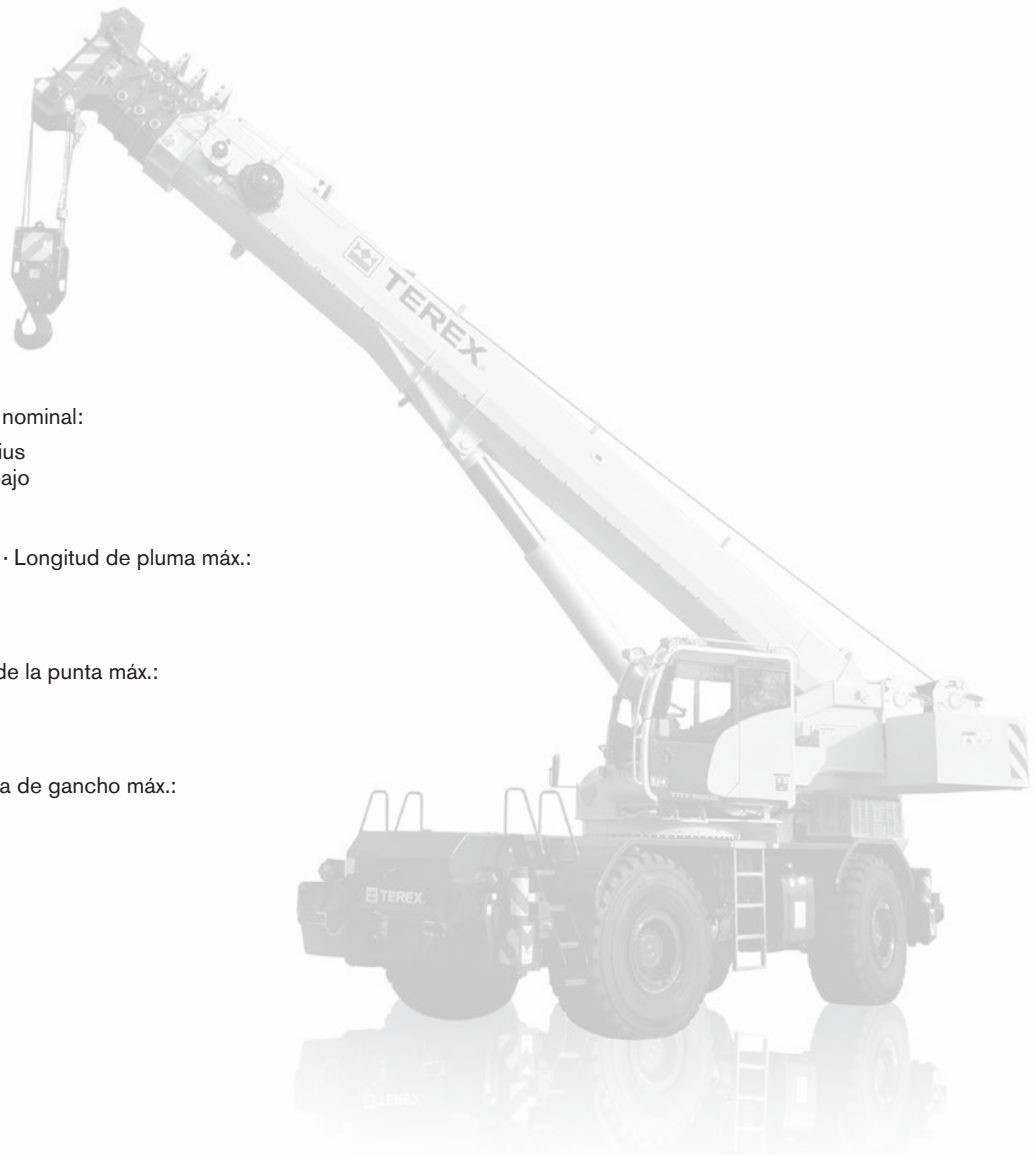
LEJENDA

	Counterweight · Contrapeso		Boom extension · Extensión
	Main boom · Pluma principal		Performance · Prestaciones
	Boom length · Longitud pluma		Boom elevation angle · Ángulo elevación pluma
	Tip height · Altura de la punta		Working radius · Radio de trabajo
	Angular offsets · Inclinación		Minimum distance between hook block and boom head · Distancia mínima gancho a cabeza pluma
	Aux head · Cabeza auxiliar		Slewing locked · Giro bloqueado
	Slewing / Allowable range · Giro / Rango admisible		Slewing gears · Sistema de giro
	Outriggers / Lifting on outriggers · Estabilizadores / Elevación sobre estabilizadores		Lifting on wheels / Pick & Carry · Elevación sobre ruedas / pick & carry
	Main hoist · Cabrestante principal		Auxiliary hoist · Cabrestante auxiliar
	Hoist speed · Velocidad cabrestante		Rope length · Longitud cable
	Rope · Cable		Line pull · Tracción cable
	Rope diameter · Diámetro cable		Tires · Neumáticos
	Hook block · Gancho		Engine · Motor
	Cab · Cabina		Steering · Dirección
	Controls · Controles		Speed · Velocidad
	Mechanical transmission · Transmisión mecánica		Heating / Air conditioning · Calefacción / Climatización
	Hydraulics · Sistema hidráulico		Gradeability · Pendiente máx.
	Operation temperature · Temperatura de servicio		Gross vehicle weight · Peso bruto vehículo
	Lights · Luces		Weight on front axle · Peso eje delantero
	Crane / Crane in standard configuration · Grúa / Grúa configuración estándar		Weight on rear axle · Peso eje trasero
	Crane without counterweight · Grúa sin contrapeso		No. of sheaves · N° poleas
	Rated weight on hook block · Carga nominal en gancho		Rams-horn hook · Aparejo gancho doble
	No. of lines · N° ramales		Differential lock · Bloqueo diferencial
	Single hook · Gancho simple		
	Electric circuit · Circuito eléctrico		

HIGHLIGHTS

CARACTERÍSTICAS DESTACADAS

TRT 80US

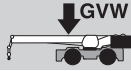
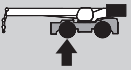

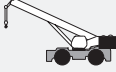







- ▶ Rated capacity · Capacidad nominal:
80 USt at 8.2 ft working radius
80 USt a 8.2 ft radio de trabajo
- ▶ Maximum main boom length · Longitud de pluma máx.:
138 ft
- ▶ Maximum tip height · Altura de la punta máx.:
148 ft
- ▶ Maximum hook height · Altura de gancho máx.:
141 ft

WEIGHTS

TRT 80US

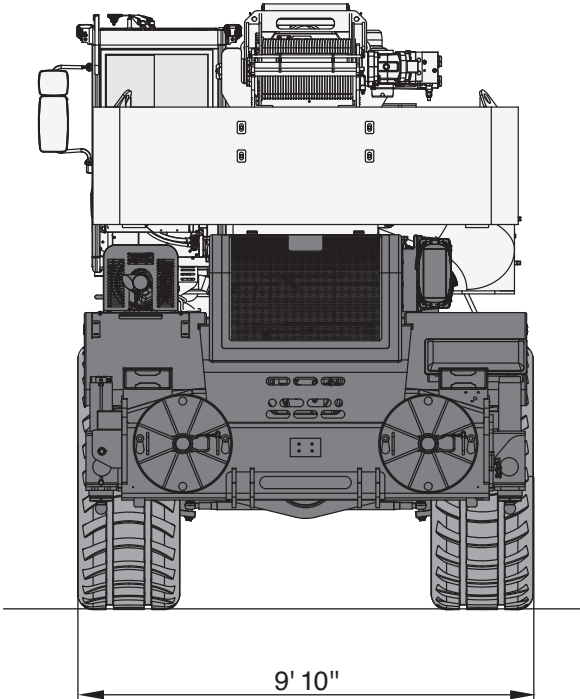
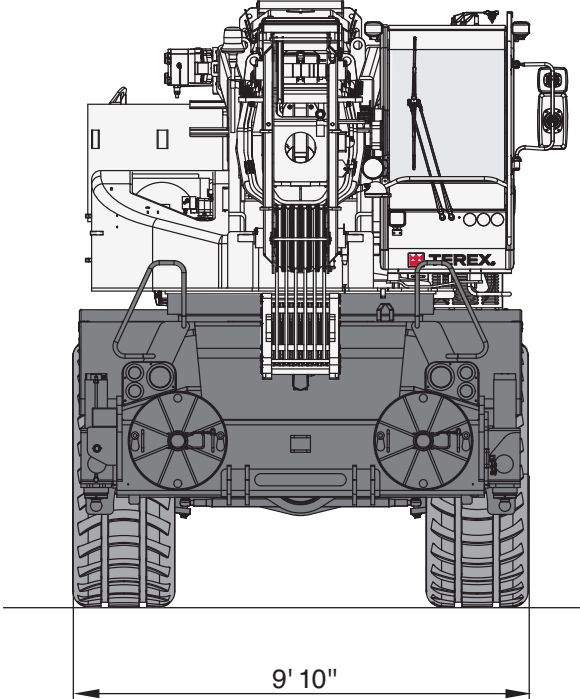
PESOS

				
	Weight without hook block Full counterweight 7,700 lbs + 2 x 4,950 lbs · Peso sin gancho Contrapeso completo 7,700 lbs + 2 x 4,950 lbs	108,000 lbs	53,000 lbs	55,000 lbs
	Weight without hook block Light counterweight (with dedicated load chart) · Peso sin gancho Contrapeso ligero (con tabla de carga dedicada)	98,100 lbs	55,680 lbs	42,420 lbs
Add / Subtract for main optional equipment · Sumar / restar para equipamiento opcional principal				
	26 ft / 49 ft Jib stowed aside the boom · Lança almacenada lateralmente a la pluma	+ 2,650 lbs	+ 4,200 lbs	- 1,550 lbs
	2 Auxiliary hoist · Cabrestante auxiliar**	0 lbs	0 lbs	0 lbs
	80 USt Single hook · Gancho simple*	+ 1,650 lbs	+ 4,080 lbs	- 2,425 lbs
	22 USt Single hook · Gancho simple*	+ 550 lbs	+ 1,390 lbs	- 840 lbs
	11 USt Single hook · Gancho simple*	+ 575 lbs	+ 880 lbs	- 530 lbs
NOTE: Values are subject to 2% variation · NOTA: Valores sujetos a una variación del 2% * Weight distribution calculated considering the hook block linked to the front shield of the machine · Distribución de pesos calculada considerando el gancho asegurado al protector frontal ** When the auxiliary hoist is installed, the additional counterweight of same weight is removed · Cuando se instala el cabrestante auxiliar, se quita el contrapeso adicional del mismo peso				

DIMENSIONS

DIMENSIONES

TRT 80US

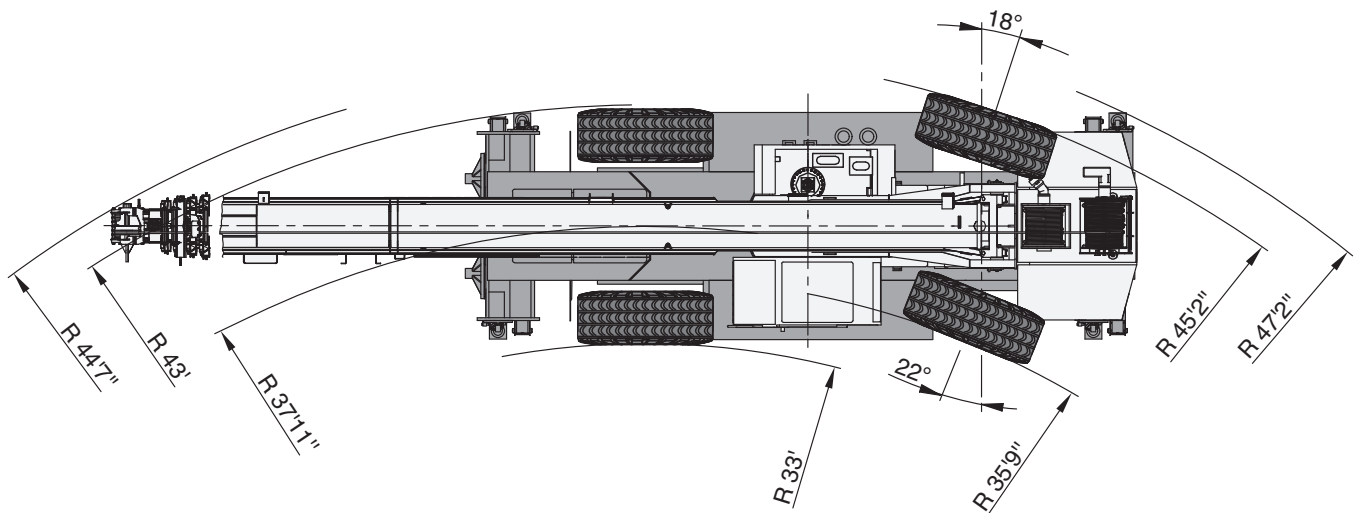
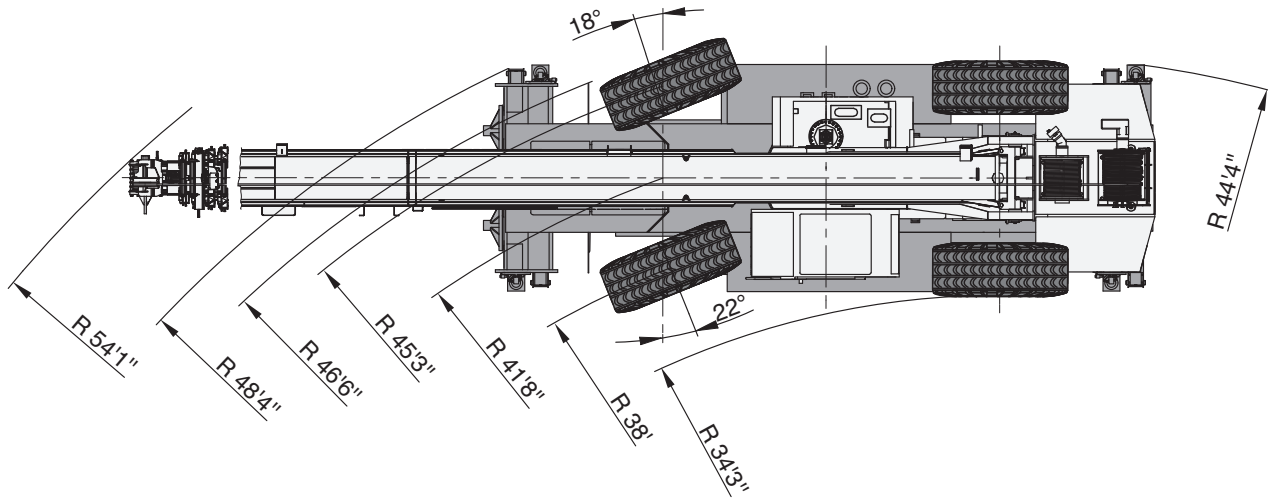


STEERING RADII

RADIOS DE DIRECCIÓN

TRT 80US

Two wheel steer · Dirección en dos ruedas

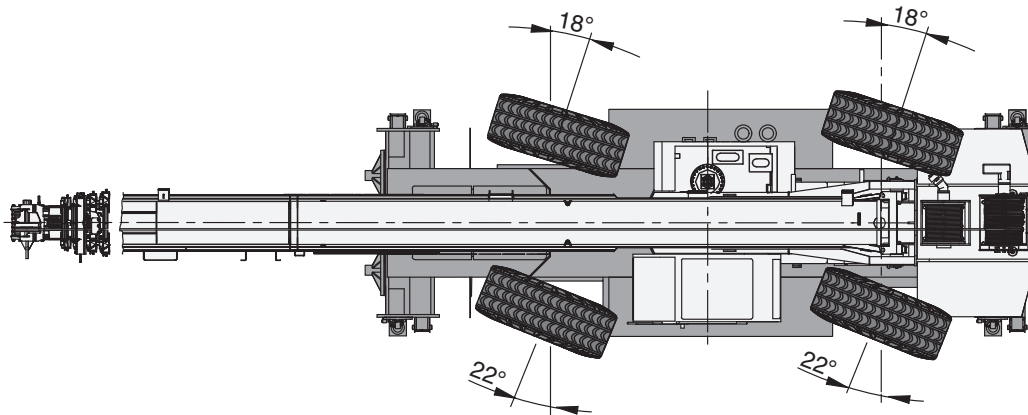
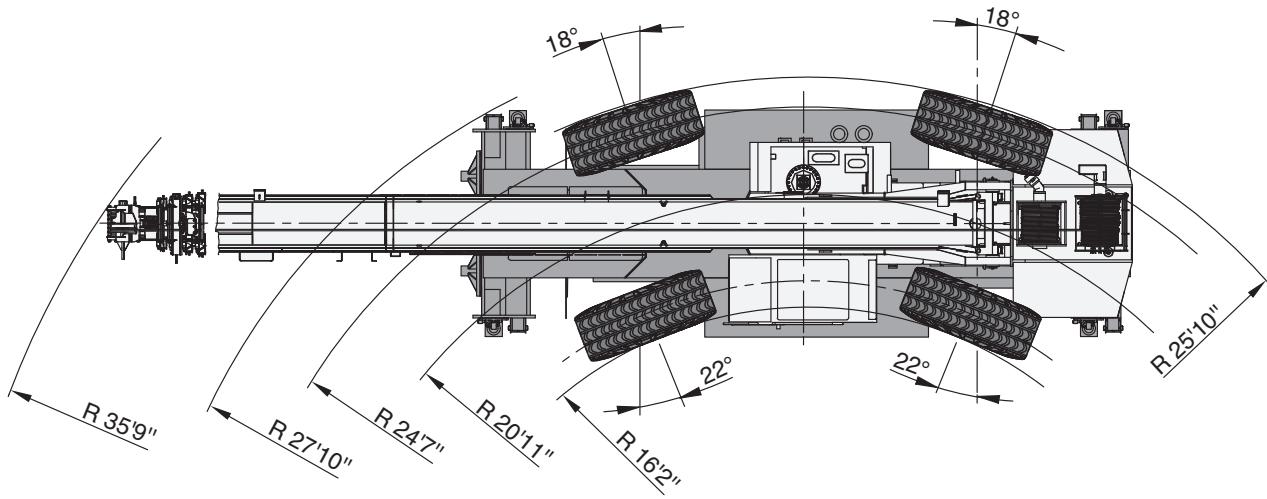


STEERING RADII

RADIOS DE DIRECCIÓN

TRT 80US

Four wheel steer · Dirección en cuatro ruedas

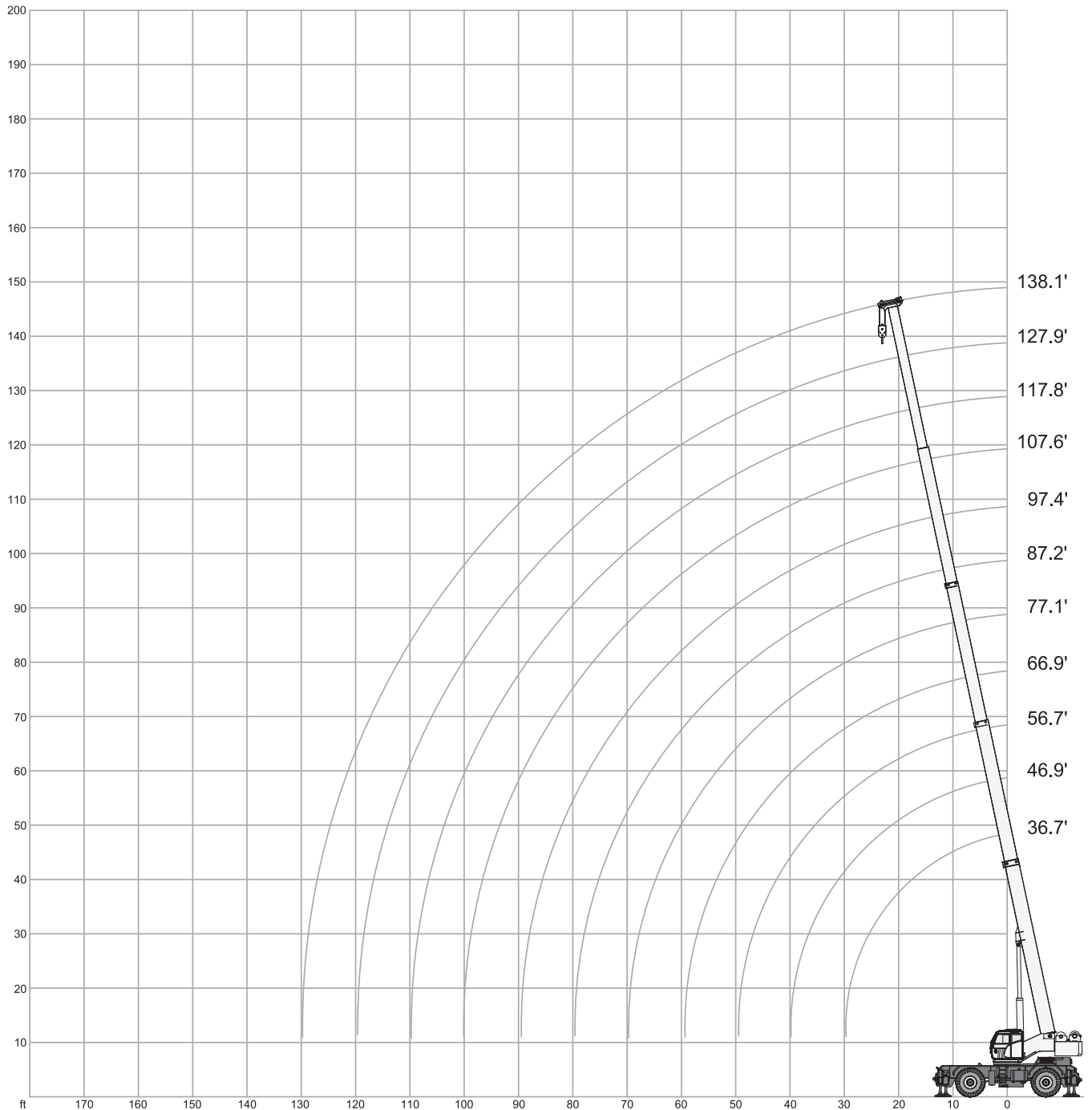
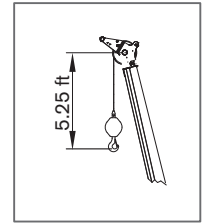
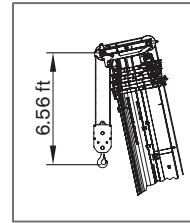
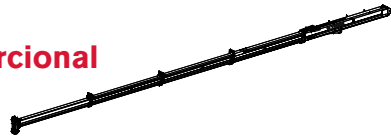


RANGE GRAPH – MAIN BOOM

TRT 80US

DIAGRAMA DE CARGA

**Mode 3:
Proportional · Proporcional**



LOAD CHART – MAIN BOOM US STANDARD ASME B30.5

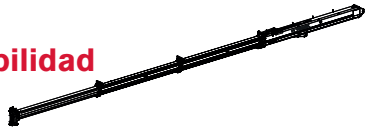
TRT 80US

TABLA DE CARGA

Outriggers · Estabilizadores 100 %

Mode 1:

Stability · Estabilidad



		17,600 lbs		24.9 ft x 26.2 ft		360°		US STANDARD ASME B30.5							
		36.7 ft		55.8 ft		74.8 ft		93.8 ft		112.8 ft		125.6 ft		138.1 ft	
		kip		kip		kip		kip		kip		kip		kip	
ft															ft
8.2		160.0	56.4	-	-	-	-	-	-	-	-	-	-	-	8.2
9.8		160.0	58.4	-	-	-	-	-	-	-	-	-	-	-	9.8
11.5		153.7	60.6	50.5	-	-	-	-	-	-	-	-	-	-	11.5
13.1		140.2	62.8	47.2	-	-	-	-	-	-	-	-	-	-	13.1
14.8		131.2	65.3	44.1	35.7	-	-	-	-	-	-	-	-	-	14.8
16.4		121.0	68.1	41.2	33.5	-	-	-	-	-	-	-	-	-	16.4
19.7		97.7	69.2	36.6	29.8	22.7	-	-	-	-	-	-	-	-	19.7
23.0		81.8	65.0	33.1	26.7	22.3	22.5	-	-	-	-	-	-	-	23.0
26.2		65.9	61.7	30.0	23.8	20.3	22.0	22.5	-	-	-	-	-	-	26.2
29.5		-	58.6	27.3	21.6	18.3	20.7	22.0	22.0	-	-	-	-	-	29.5
32.8		-	53.4	25.1	19.8	16.5	18.7	21.6	21.6	21.6	-	-	-	-	32.8
36.1		-	45.2	23.1	18.1	15.0	17.2	20.1	20.1	20.1	20.1	-	-	-	36.1
39.4		-	38.8	21.4	16.5	13.9	15.7	18.5	18.5	18.5	18.5	18.5	-	-	39.4
42.6		-	33.7	19.8	15.2	12.6	14.6	17.2	17.2	17.2	17.2	17.2	17.2	-	42.6
45.9		-	29.8	18.5	13.9	11.7	13.4	15.9	15.9	15.9	15.9	15.9	15.9	-	45.9
49.2		-	-	17.4	13.0	10.8	12.3	14.8	14.8	14.8	14.8	14.8	14.8	-	49.2
52.5		-	-	15.9	12.1	9.9	11.5	13.9	13.9	13.9	13.9	13.9	13.9	-	52.5
55.8		-	-	15.0	11.2	9.3	10.8	13.0	13.0	13.0	13.0	13.0	13.0	-	55.8
59.0		-	-	14.1	10.6	8.6	10.1	12.3	12.3	12.3	12.3	12.3	12.3	-	59.0
62.3		-	-	13.2	9.9	8.2	9.5	11.5	11.5	11.5	11.5	11.5	11.5	-	62.3
65.6		-	-	12.6	9.3	7.5	8.8	11.0	11.0	11.0	11.0	11.0	11.0	-	65.6
68.9		-	-	-	8.8	7.1	8.4	10.4	10.4	10.4	10.4	10.4	10.4	-	68.9
72.2		-	-	-	8.2	6.6	7.7	9.9	9.9	9.9	9.9	9.9	9.9	-	72.2
75.4		-	-	-	7.7	6.2	7.3	9.3	9.3	9.3	9.3	9.3	9.3	-	75.4
78.7		-	-	-	7.3	5.7	6.8	8.6	8.6	8.6	8.6	8.6	8.6	-	78.7
82.0		-	-	-	6.8	5.3	6.4	8.2	8.2	8.2	8.2	8.2	8.2	-	82.0
85.3		-	-	-	6.6	5.1	6.2	7.7	7.7	7.7	7.7	7.7	7.7	-	85.3
88.6		-	-	-	-	4.6	5.7	7.3	7.3	7.3	7.3	7.3	7.3	-	88.6
91.8		-	-	-	-	4.4	5.5	6.2	6.2	6.2	6.2	6.2	6.2	-	91.8
95.1		-	-	-	-	4.2	5.1	5.7	5.7	5.7	5.7	5.7	5.7	-	95.1
98.4		-	-	-	-	4.0	4.9	5.3	5.3	5.3	5.3	5.3	5.3	-	98.4
101.7		-	-	-	-	3.7	4.6	4.6	4.6	4.6	4.6	4.6	4.6	-	101.7
105.0		-	-	-	-	-	4.4	4.2	4.2	4.2	4.2	4.2	4.2	-	105.0
108.2		-	-	-	-	-	4.2	4.0	4.0	4.0	4.0	4.0	4.0	-	108.2
111.5		-	-	-	-	-	3.7	3.5	3.5	3.5	3.5	3.5	3.5	-	111.5
114.8		-	-	-	-	-	3.5	3.1	3.1	3.1	3.1	3.1	3.1	-	114.8
118.1		-	-	-	-	-	-	2.9	2.9	2.9	2.9	2.9	2.9	-	118.1
121.4		-	-	-	-	-	-	2.4	2.4	2.4	2.4	2.4	2.4	-	121.4
124.6		-	-	-	-	-	-	2.2	2.2	2.2	2.2	2.2	2.2	-	124.6
127.9		-	-	-	-	-	-	2.0	2.0	2.0	2.0	2.0	2.0	-	127.9

It is possible to reduce the counterweight up to 7,700 lbs in order to reduce overall crane weight. Load charts with 7,700 lbs counterweight are available on request.

Es posible reducir el contrapeso hasta 7,700 libras para reducir el peso total de la grúa. Las tablas de carga con contrapeso de 7,700 libras están disponibles a pedido.

LOAD CHART – MAIN BOOM US STANDARD ASME B30.5

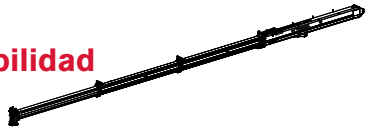
TRT 80US

TABLA DE CARGA

Outriggers · Estabilizadores 50 %

Mode 1:

Stability · Estabilidad



		17,600 lbs		24.9 ft x 11.8 ft		360°		US STANDARD ASME B30.5	
		36.7 ft		55.8 ft		74.8 ft		93.8 ft	
		112.8 ft		125.6 ft		138.1 ft			
		kip		kip		kip		kip	
		ft		ft		ft		ft	
8.2	160.0	56.4	-	-	-	-	-	8.2	
9.8	160.0	58.4	-	-	-	-	-	9.8	
11.5	153.7	60.6	50.5	-	-	-	-	11.5	
13.1	140.2	62.8	47.2	-	-	-	-	13.1	
14.8	131.2	65.3	44.1	35.7	-	-	-	14.8	
16.4	106.9	68.1	41.2	33.5	-	-	-	16.4	
19.7	73.0	69.2	36.6	29.8	22.7	-	-	19.7	
23.0	54.0	56.0	33.1	26.7	22.3	22.5	-	23.0	
26.2	42.3	44.3	30.0	23.8	20.3	22.0	22.5	26.2	
29.5	-	36.2	27.3	21.6	18.3	20.7	22.0	29.5	
32.8	-	30.0	25.1	19.8	16.5	18.7	21.6	32.8	
36.1	-	25.4	23.1	18.1	15.0	17.2	19.8	36.1	
39.4	-	21.8	21.4	16.5	13.9	15.7	18.3	39.4	
42.6	-	18.7	19.6	15.2	12.6	14.6	17.0	42.6	
45.9	-	16.1	17.0	13.9	11.7	13.4	15.7	45.9	
49.2	-	-	15.0	13.0	10.8	12.3	13.9	49.2	
52.5	-	-	13.2	12.1	9.9	11.5	12.1	52.5	
55.8	-	-	11.9	11.2	9.3	10.8	10.8	55.8	
59.0	-	-	10.6	10.6	8.6	10.1	9.5	59.0	
62.3	-	-	9.3	9.9	8.2	9.3	8.4	62.3	
65.6	-	-	8.4	8.8	7.5	8.2	7.5	65.6	
68.9	-	-	-	7.9	7.1	7.3	6.6	68.9	
72.2	-	-	-	7.1	6.6	6.6	5.7	72.2	
75.4	-	-	-	6.4	6.2	5.7	5.1	75.4	
78.7	-	-	-	5.7	5.7	5.3	4.4	78.7	
82.0	-	-	-	5.1	5.3	4.6	4.0	82.0	
85.3	-	-	-	4.6	4.9	4.0	3.3	85.3	
88.6	-	-	-	-	4.4	3.5	2.9	88.6	
91.8	-	-	-	-	4.0	3.1	2.4	91.8	
95.1	-	-	-	-	3.5	2.6	2.0	95.1	
98.4	-	-	-	-	3.1	2.2	1.5	98.4	
101.7	-	-	-	-	2.6	1.8	1.1	101.7	
105.0	-	-	-	-	-	1.5	0.9	105.0	
108.2	-	-	-	-	-	1.1	-	108.2	
111.5	-	-	-	-	-	0.9	-	111.5	
114.8	-	-	-	-	-	0.7	-	114.8	

It is possible to reduce the counterweight up to 7,700 lbs in order to reduce overall crane weight. Load charts with 7,700 lbs counterweight are available on request.

Es posible reducir el contrapeso hasta 7,700 libras para reducir el peso total de la grúa. Las tablas de carga con contrapeso de 7,700 libras están disponibles a pedido.

LOAD CHART – MAIN BOOM US STANDARD ASME B30.5

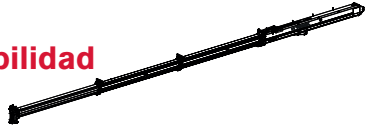
TRT 80US

TABLA DE CARGA

Outriggers · Estabilizadores 0 %

Mode 1:

Stability · Estabilidad



		17,600 lbs		24.9 ft x 8.7 ft		360°		US STANDARD ASME B30.5	
		36.7 ft		55.8 ft		74.8 ft		93.8 ft	
		55.8 ft		74.8 ft		93.8 ft		112.8 ft	
		74.8 ft		93.8 ft		112.8 ft		125.6 ft	
		93.8 ft		112.8 ft		125.6 ft		138.1 ft	
		112.8 ft		125.6 ft		138.1 ft		ft	
		125.6 ft		138.1 ft		ft		ft	
		138.1 ft		ft		ft		ft	
		ft		ft		ft		ft	
		kip		kip		kip		kip	
8.2	160.0	56.4	-	-	-	-	-	-	8.2
9.8	160.0	58.4	-	-	-	-	-	-	9.8
11.5	153.7	60.6	50.5	-	-	-	-	-	11.5
13.1	140.2	62.8	47.2	-	-	-	-	-	13.1
14.8	132.5	65.3	44.1	35.7	-	-	-	-	14.8
16.4	106.9	68.1	41.2	33.5	-	-	-	-	16.4
19.7	73.0	69.2	36.6	29.8	22.7	-	-	-	19.7
23.0	54.0	56.0	33.1	26.7	22.3	22.5	-	-	23.0
26.2	42.3	44.3	30.0	23.8	20.3	22.0	22.5	-	26.2
29.5	-	36.2	27.3	21.6	18.3	20.7	22.0	-	29.5
32.8	-	30.0	25.1	19.8	16.5	18.7	21.6	-	32.8
36.1	-	25.4	23.1	18.1	15.0	17.2	19.8	-	36.1
39.4	-	21.8	21.4	16.5	13.9	15.7	18.3	-	39.4
42.6	-	18.7	19.6	15.2	12.6	14.6	17.0	-	42.6
45.9	-	16.1	17.0	13.9	11.7	13.4	15.7	-	45.9
49.2	-	-	15.0	13.0	10.8	12.3	13.9	-	49.2
52.5	-	-	13.2	12.1	9.9	11.5	12.1	-	52.5
55.8	-	-	11.9	11.2	9.3	10.8	10.8	-	55.8
59.0	-	-	10.6	10.6	8.6	10.1	9.5	-	59.0
62.3	-	-	9.3	9.9	8.2	9.3	8.4	-	62.3
65.6	-	-	8.4	8.8	7.5	8.2	7.5	-	65.6
68.9	-	-	-	7.9	7.1	7.3	6.6	-	68.9
72.2	-	-	-	7.1	6.6	6.6	5.7	-	72.2
75.4	-	-	-	6.4	6.2	5.7	5.1	-	75.4
78.7	-	-	-	5.7	5.7	5.3	4.4	-	78.7
82.0	-	-	-	5.1	5.3	4.6	4.0	-	82.0
85.3	-	-	-	4.6	4.9	4.0	3.3	-	85.3
88.6	-	-	-	-	4.4	3.5	2.9	-	88.6
91.8	-	-	-	-	4.0	3.1	2.4	-	91.8
95.1	-	-	-	-	3.5	2.6	2.0	-	95.1
98.4	-	-	-	-	3.1	2.2	1.5	-	98.4
101.7	-	-	-	-	2.6	1.8	1.1	-	101.7
105.0	-	-	-	-	-	1.5	0.9	-	105.0
108.2	-	-	-	-	-	1.1	-	-	108.2
111.5	-	-	-	-	-	0.9	-	-	111.5
114.8	-	-	-	-	-	0.7	-	-	114.8

It is possible to reduce the counterweight up to 7,700 lbs in order to reduce overall crane weight. Load charts with 7,700 lbs counterweight are available on request.

Es posible reducir el contrapeso hasta 7,700 libras para reducir el peso total de la grúa. Las tablas de carga con contrapeso de 7,700 libras están disponibles a pedido.

LOAD CHART – MAIN BOOM US STANDARD ASME B30.5

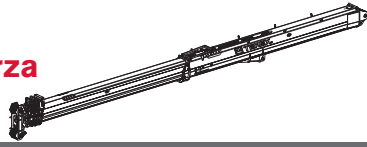
TRT 80US

TABLA DE CARGA

Outriggers · Estabilizadores 100 %

Mode 2:

Strength · Fuerza



		17,600 lbs		24.9 ft x 26.2 ft		360°		US STANDARD ASME B30.5									
		36.7 ft		49.2 ft		62.0 ft		81.0 ft		100.0 ft		119.1 ft		138.1 ft			
		kip		kip		kip		kip		kip		kip		kip		ft	
8.2	ft	160.0	146.6	102.3	-	-	-	-	-	-	-	-	-	-	-	8.2	ft
9.8	ft	160.0	146.6	94.6	-	-	-	-	-	-	-	-	-	-	-	9.8	ft
11.5	ft	153.7	144.2	87.5	54.0	-	-	-	-	-	-	-	-	-	-	11.5	ft
13.1	ft	140.2	134.0	81.1	55.3	-	-	-	-	-	-	-	-	-	-	13.1	ft
14.8	ft	131.2	123.9	75.6	56.7	-	-	-	-	-	-	-	-	-	-	14.8	ft
16.4	ft	121.0	108.0	70.8	56.7	48.9	-	-	-	-	-	-	-	-	-	16.4	ft
19.7	ft	97.7	88.0	62.4	50.0	43.0	37.7	-	-	-	-	-	-	-	-	19.7	ft
23.0	ft	81.8	73.6	55.8	45.0	38.6	34.2	-	-	-	-	-	-	-	-	23.0	ft
26.2	ft	65.9	63.9	50.3	40.3	34.8	31.3	22.5	-	-	-	-	-	-	-	26.2	ft
29.5	ft	-	55.3	45.4	36.8	31.7	28.7	22.0	-	-	-	-	-	-	-	29.5	ft
32.8	ft	-	42.3	41.4	33.5	28.9	26.2	21.6	-	-	-	-	-	-	-	32.8	ft
36.1	ft	-	35.1	35.3	30.9	26.7	24.0	20.1	-	-	-	-	-	-	-	36.1	ft
39.4	ft	-	29.5	28.5	28.4	24.5	22.3	18.5	-	-	-	-	-	-	-	39.4	ft
42.6	ft	-	-	24.3	26.2	22.7	20.5	17.2	-	-	-	-	-	-	-	42.6	ft
45.9	ft	-	-	20.7	22.7	21.2	19.0	15.9	-	-	-	-	-	-	-	45.9	ft
49.2	ft	-	-	17.9	19.8	19.6	17.6	14.8	-	-	-	-	-	-	-	49.2	ft
52.5	ft	-	-	15.4	17.4	18.5	15.9	13.9	-	-	-	-	-	-	-	52.5	ft
55.8	ft	-	-	-	15.4	17.2	14.8	13.0	-	-	-	-	-	-	-	55.8	ft
59.0	ft	-	-	-	13.7	15.4	13.7	12.3	-	-	-	-	-	-	-	59.0	ft
62.3	ft	-	-	-	12.1	13.0	13.0	11.5	-	-	-	-	-	-	-	62.3	ft
65.6	ft	-	-	-	10.6	11.9	12.1	11.0	-	-	-	-	-	-	-	65.6	ft
68.9	ft	-	-	-	9.5	10.6	11.5	10.4	-	-	-	-	-	-	-	68.9	ft
72.2	ft	-	-	-	8.4	9.5	10.8	9.9	-	-	-	-	-	-	-	72.2	ft
75.4	ft	-	-	-	-	8.6	9.3	9.3	-	-	-	-	-	-	-	75.4	ft
78.7	ft	-	-	-	-	7.9	8.4	8.6	-	-	-	-	-	-	-	78.7	ft
82.0	ft	-	-	-	-	7.1	7.7	8.2	-	-	-	-	-	-	-	82.0	ft
85.3	ft	-	-	-	-	6.4	7.1	7.7	-	-	-	-	-	-	-	85.3	ft
88.6	ft	-	-	-	-	5.7	6.4	7.3	-	-	-	-	-	-	-	88.6	ft
91.8	ft	-	-	-	-	4.9	5.7	6.2	-	-	-	-	-	-	-	91.8	ft
95.1	ft	-	-	-	-	-	5.3	5.7	-	-	-	-	-	-	-	95.1	ft
98.4	ft	-	-	-	-	-	4.6	5.3	-	-	-	-	-	-	-	98.4	ft
101.7	ft	-	-	-	-	-	4.2	4.6	-	-	-	-	-	-	-	101.7	ft
105.0	ft	-	-	-	-	-	3.7	4.2	-	-	-	-	-	-	-	105.0	ft
108.2	ft	-	-	-	-	-	3.3	4.0	-	-	-	-	-	-	-	108.2	ft
111.5	ft	-	-	-	-	-	-	3.5	-	-	-	-	-	-	-	111.5	ft
114.8	ft	-	-	-	-	-	-	3.1	-	-	-	-	-	-	-	114.8	ft
118.1	ft	-	-	-	-	-	-	2.9	-	-	-	-	-	-	-	118.1	ft
121.4	ft	-	-	-	-	-	-	2.4	-	-	-	-	-	-	-	121.4	ft
124.6	ft	-	-	-	-	-	-	2.2	-	-	-	-	-	-	-	124.6	ft
127.9	ft	-	-	-	-	-	-	2.0	-	-	-	-	-	-	-	127.9	ft

It is possible to reduce the counterweight up to 7,700 lbs in order to reduce overall crane weight. Load charts with 7,700 lbs counterweight are available on request.

Es posible reducir el contrapeso hasta 7,700 libras para reducir el peso total de la grúa. Las tablas de carga con contrapeso de 7,700 libras están disponibles a pedido.

LOAD CHART – MAIN BOOM US STANDARD ASME B30.5

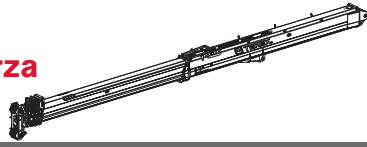
TRT 80US

TABLA DE CARGA

Outriggers · Estabilizadores 50 %

Mode 2:

Strength · Fuerza



		17,600 lbs		24.9 ft x 11.8 ft		360°		US STANDARD ASME B30.5	
		36.7 ft		49.2 ft		62.0 ft		81.0 ft	
		kip		kip		kip		kip	
ft		ft		ft		ft		ft	
8.2	160.0	146.6	102.3	-	-	-	-	-	8.2
9.8	160.0	146.6	94.6	-	-	-	-	-	9.8
11.5	153.7	144.2	87.5	54.0	-	-	-	-	11.5
13.1	140.2	134.0	81.1	54.0	-	-	-	-	13.1
14.8	131.2	123.9	75.6	54.0	-	-	-	-	14.8
16.4	106.9	102.1	70.8	54.0	48.9	-	-	-	16.4
19.7	73.0	69.4	62.4	50.0	43.0	37.7	-	-	19.7
23.0	54.0	51.6	49.6	45.0	38.4	34.0	-	-	23.0
26.2	42.3	39.9	38.6	40.3	34.6	31.1	22.5	-	26.2
29.5	-	32.0	30.6	32.6	31.3	28.0	22.0	-	29.5
32.8	-	26.0	24.9	26.9	28.0	25.6	21.6	-	32.8
36.1	-	21.6	20.5	22.5	23.6	23.4	19.8	-	36.1
39.4	-	17.6	16.8	18.5	20.1	20.7	18.3	-	39.4
42.6	-	-	14.1	15.9	17.0	17.6	17.0	-	42.6
45.9	-	-	11.7	13.7	14.6	15.2	15.7	-	45.9
49.2	-	-	9.7	11.7	12.8	13.4	13.9	-	49.2
52.5	-	-	8.2	9.9	11.0	11.7	12.1	-	52.5
55.8	-	-	-	8.6	9.7	10.4	10.8	-	55.8
59.0	-	-	-	7.3	8.4	9.0	9.5	-	59.0
62.3	-	-	-	6.2	7.3	7.9	8.4	-	62.3
65.6	-	-	-	5.3	6.4	7.1	7.5	-	65.6
68.9	-	-	-	4.4	5.5	6.2	6.6	-	68.9
72.2	-	-	-	3.5	4.6	5.3	5.7	-	72.2
75.4	-	-	-	-	4.0	4.6	5.1	-	75.4
78.7	-	-	-	-	3.3	4.0	4.4	-	78.7
82.0	-	-	-	-	2.6	3.3	4.0	-	82.0
85.3	-	-	-	-	2.2	2.9	3.3	-	85.3
88.6	-	-	-	-	1.5	2.4	2.9	-	88.6
91.8	-	-	-	-	1.1	2.0	2.4	-	91.8
95.1	-	-	-	-	-	1.5	2.0	-	95.1
98.4	-	-	-	-	-	1.1	1.5	-	98.4
101.7	-	-	-	-	-	0.7	1.1	-	101.7
105.0	-	-	-	-	-	-	0.9	-	105.0

It is possible to reduce the counterweight up to 7,700 lbs in order to reduce overall crane weight. Load charts with 7,700 lbs counterweight are available on request.

Es posible reducir el contrapeso hasta 7,700 libras para reducir el peso total de la grúa. Las tablas de carga con contrapeso de 7,700 libras están disponibles a pedido.

LOAD CHART – MAIN BOOM US STANDARD ASME B30.5

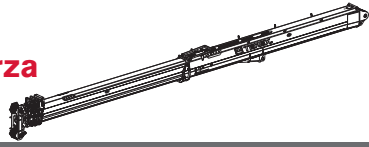
TRT 80US

TABLA DE CARGA

Outriggers · Estabilizadores 0 %

Mode 2:

Strength · Fuerza



		17,600 lbs		24.9 ft x 8.7 ft		360°		US STANDARD ASME B30.5	
		36.7 ft		49.2 ft		62.0 ft		81.0 ft	
		kip		kip		kip		kip	
		ft		ft		ft		ft	
8.2	111.1	128.3	102.3	-	-	-	-	-	8.2
9.8	95.7	90.6	86.9	-	-	-	-	-	9.8
11.5	72.8	68.8	66.1	54.0	-	-	-	-	11.5
13.1	57.8	54.7	52.5	53.8	-	-	-	-	13.1
14.8	47.4	44.8	43.0	44.5	-	-	-	-	14.8
16.4	39.9	37.5	35.9	37.5	38.1	-	-	-	16.4
19.7	29.3	27.3	26.0	27.8	28.7	29.1	-	-	19.7
23.0	22.3	20.5	19.4	21.2	22.0	22.7	-	-	23.0
26.2	17.0	15.4	14.3	16.1	17.0	17.6	18.1	-	26.2
29.5	-	11.9	11.0	12.8	13.7	14.3	14.8	-	29.5
32.8	-	9.3	8.4	10.1	11.2	11.9	12.1	-	32.8
36.1	-	7.1	6.4	8.2	9.0	9.7	10.1	-	36.1
39.4	-	5.3	4.6	6.4	7.3	7.9	8.4	-	39.4
42.6	-	-	3.3	4.9	6.0	6.6	7.1	-	42.6
45.9	-	-	2.0	3.7	4.6	5.3	5.7	-	45.9
49.2	-	-	0.9	2.6	3.7	4.4	4.9	-	49.2
52.5	-	-	-	1.8	2.9	3.5	4.0	-	52.5
55.8	-	-	-	0.9	2.0	2.6	3.1	-	55.8
59.0	-	-	-	-	1.3	2.0	2.4	-	59.0
62.3	-	-	-	-	0.7	1.3	1.8	-	62.3
65.6	-	-	-	-	-	0.7	1.3	-	65.6
68.9	-	-	-	-	-	-	0.7	-	68.9

It is possible to reduce the counterweight up to 7,700 lbs in order to reduce overall crane weight. Load charts with 7,700 lbs counterweight are available on request.

Es posible reducir el contrapeso hasta 7,700 libras para reducir el peso total de la grúa. Las tablas de carga con contrapeso de 7,700 libras están disponibles a pedido.

LOAD CHART – MAIN BOOM US STANDARD ASME B30.5

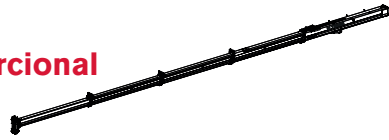
TRT 80US

TABLA DE CARGA

Outriggers · Estabilizadores 50 %

Mode 3:

Proportional · Proporcional



		17,600 lbs		24.9 ft x 11.8 ft		360°		US STANDARD ASME B30.5				
ft	kip	kip	kip	kip	kip	kip	kip	kip	kip	kip	kip	ft
8.2	160.0	60.6	57.5	-	-	-	-	-	-	-	-	8.2
9.8	160.0	62.8	58.6	55.6	-	-	-	-	-	-	-	9.8
11.5	153.7	65.3	60.4	56.9	54.9	-	-	-	-	-	-	11.5
13.1	140.2	67.9	62.2	58.4	55.3	53.1	-	-	-	-	-	13.1
14.8	132.5	71.2	64.4	60.0	56.7	54.2	50.5	-	-	-	-	14.8
16.4	106.9	74.7	66.6	62.2	56.2	51.1	47.4	-	-	-	-	16.4
19.7	73.0	73.2	73.0	57.5	50.7	45.9	42.5	39.9	37.9	-	-	19.7
23.0	54.0	54.5	54.7	52.7	46.1	41.7	38.4	35.9	34.2	32.4	-	23.0
26.2	42.3	42.8	43.0	43.0	42.1	37.9	35.1	32.8	30.9	29.5	22.5	26.2
29.5	-	34.6	34.8	35.1	35.1	34.8	32.2	30.0	28.2	26.9	22.0	29.5
32.8	-	28.7	28.9	29.1	29.1	29.1	29.1	27.6	26.0	24.7	21.6	32.8
36.1	-	24.0	24.3	24.5	24.7	24.7	24.7	24.7	24.0	22.7	19.8	36.1
39.4	-	-	20.7	20.9	21.2	21.2	21.2	21.2	21.2	20.9	18.3	39.4
42.6	-	-	17.9	18.1	18.3	18.3	18.3	18.3	18.3	18.3	17.0	42.6
45.9	-	-	15.2	15.4	15.4	15.7	15.7	15.7	16.1	16.1	15.7	45.9
49.2	-	-	-	13.4	13.7	13.7	13.7	13.9	14.1	13.9	13.9	49.2
52.5	-	-	-	11.7	11.9	11.9	12.1	12.1	12.1	12.1	12.1	52.5
55.8	-	-	-	10.1	10.4	10.6	10.6	10.8	10.8	10.8	10.8	55.8
59.0	-	-	-	9.0	9.3	9.3	9.5	9.5	9.5	9.5	9.5	59.0
62.3	-	-	-	-	7.9	8.2	8.4	8.4	8.4	8.4	8.4	62.3
65.6	-	-	-	-	7.1	7.3	7.3	7.3	7.5	7.5	7.5	65.6
68.9	-	-	-	-	6.2	6.4	6.4	6.4	6.6	6.6	6.6	68.9
72.2	-	-	-	-	-	5.5	5.5	5.7	5.7	5.7	5.7	72.2
75.4	-	-	-	-	-	4.9	4.9	5.1	5.1	5.1	5.1	75.4
78.7	-	-	-	-	-	4.2	4.2	4.4	4.4	4.4	4.4	78.7
82.0	-	-	-	-	-	-	3.5	3.7	3.7	4.0	4.0	82.0
85.3	-	-	-	-	-	-	3.1	3.1	3.3	3.3	3.3	85.3
88.6	-	-	-	-	-	-	2.6	2.6	2.6	2.9	2.9	88.6
91.8	-	-	-	-	-	-	-	2.2	2.2	2.4	2.4	91.8
95.1	-	-	-	-	-	-	-	1.8	1.8	2.0	2.0	95.1
98.4	-	-	-	-	-	-	-	1.3	1.5	1.5	1.5	98.4
101.7	-	-	-	-	-	-	-	-	1.1	1.1	1.1	101.7
105.0	-	-	-	-	-	-	-	-	0.7	0.9	0.9	105.0
108.2	-	-	-	-	-	-	-	-	0.4	0.4	-	108.2
111.5	-	-	-	-	-	-	-	-	-	0.2	-	111.5

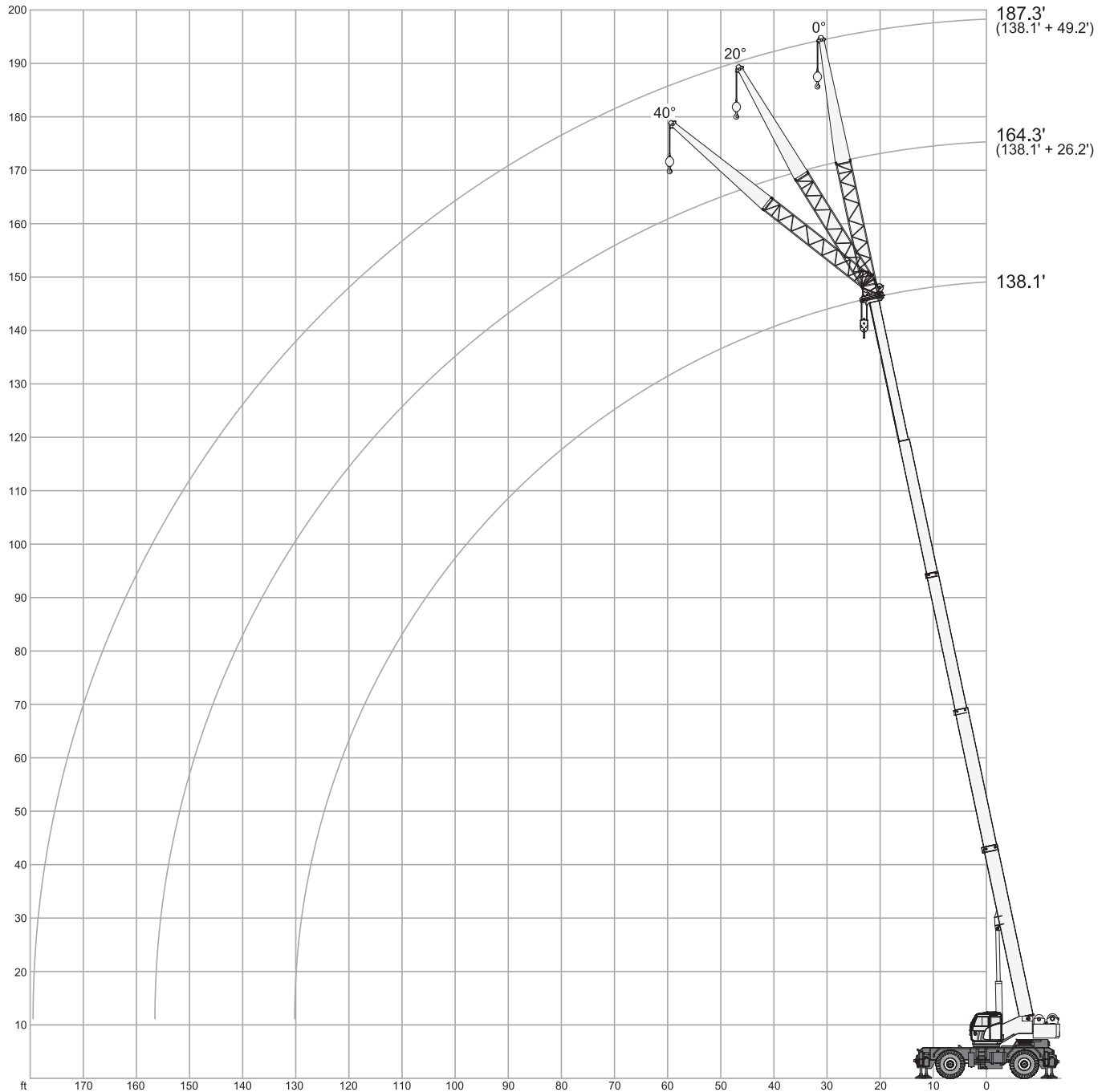
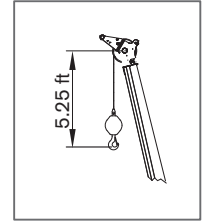
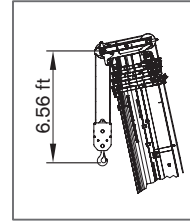
It is possible to reduce the counterweight up to 7,700 lbs in order to reduce overall crane weight. Load charts with 7,700 lbs counterweight are available on request.

Es posible reducir el contrapeso hasta 7,700 libras para reducir el peso total de la grúa. Las tablas de carga con contrapeso de 7,700 libras están disponibles a pedido.

RANGE GRAPH - JIB

DIAGRAMA DE CARGA

TRT 80US



LOAD CHART – JIB US STANDARD ASME B30.5

TRT 80US

TABLA DE CARGA

Outriggers · Estabilizadores 100 %

		17,600 lbs			24.9 ft x 26.2 ft			360°		US STANDARD ASME B30.5	
ft	26.2 ft			138.1 ft	49.2 ft			ft			
	0°	20°	40°		0°	20°	40°				
kip	kip	kip	kip	kip	kip	kip	kip	kip	kip		
39.4	11.9	-	-	-	-	-	-	39.4			
42.6	11.5	-	-	-	7.1	-	-	42.6			
45.9	11.2	9.3	-	-	7.1	-	-	45.9			
49.2	11.0	9.0	-	-	7.1	-	-	49.2			
52.5	10.4	8.6	7.5	-	7.1	-	-	52.5			
55.8	9.7	8.4	7.3	-	6.6	5.3	-	55.8			
59.0	9.0	8.2	7.1	-	6.6	5.1	-	59.0			
62.3	8.6	7.9	6.8	-	6.6	4.9	-	62.3			
65.6	7.9	7.7	6.6	-	6.4	4.6	-	65.6			
68.9	7.5	7.3	6.4	-	6.2	4.6	-	68.9			
72.2	7.1	6.8	6.2	-	6.0	4.4	4.0	72.2			
75.4	6.6	6.4	6.0	-	5.7	4.4	3.7	75.4			
78.7	6.2	6.2	5.7	-	5.5	4.2	3.7	78.7			
82.0	5.7	5.7	5.5	-	5.1	4.2	3.5	82.0			
85.3	5.3	5.3	5.3	-	4.9	4.0	3.5	85.3			
88.6	4.9	4.9	5.1	-	4.4	4.0	3.5	88.6			
91.8	4.4	4.6	4.6	-	4.2	3.7	3.5	91.8			
95.1	4.2	4.4	4.4	-	4.0	3.7	3.3	95.1			
98.4	3.7	4.0	4.2	-	3.7	3.7	3.3	98.4			
101.7	3.3	3.7	4.0	-	3.5	3.5	3.3	101.7			
105.0	3.1	3.5	3.5	-	3.1	3.3	3.3	105.0			
108.2	2.9	3.1	3.3	-	2.9	3.1	3.1	108.2			
111.5	2.6	2.9	3.1	-	2.6	2.9	3.1	111.5			
114.8	2.4	2.6	2.6	-	2.4	2.6	2.9	114.8			
118.1	2.2	2.4	2.4	-	2.2	2.4	2.6	118.1			
121.4	2.0	2.2	2.2	-	2.0	2.2	2.4	121.4			
124.6	1.8	2.0	2.0	-	1.8	2.2	2.2	124.6			
127.9	1.5	1.8	1.8	-	1.5	2.0	2.2	127.9			
131.2	1.3	1.5	1.5	-	1.3	1.8	2.0	131.2			
134.5	1.1	1.1	1.3	-	1.1	1.5	1.8	134.5			
137.8	0.9	0.9	0.9	-	1.1	1.3	1.5	137.8			
141.0	0.7	0.7	0.7	-	0.9	1.1	1.3	141.0			
144.3	0.4	0.4	0.4	-	0.7	0.9	1.1	144.3			
147.6	-	-	-	-	0.4	0.7	0.9	147.6			
150.9	-	-	-	-	-	0.4	0.7	150.9			
154.2	-	-	-	-	-	-	0.4	154.2			

It is possible to reduce the counterweight up to 7,700 lbs in order to reduce overall crane weight. Load charts with 7,700 lbs counterweight are available on request.






Es posible reducir el contrapeso hasta 7,700 libras para reducir el peso total de la grúa. Las tablas de carga con contrapeso de 7,700 libras están disponibles a pedido.

TECHNICAL SPECIFICATIONS





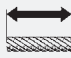

TRT 80US

ESPECIFICACIÓN TÉCNICA

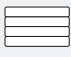


Boom · Pluma

	5 sections · 5 secciones	
	Three modes · Tres modos	
	Min. / Max. · Mín. / Máx.	36.7 ft / 138.1 ft
	Max. main boom · Máx. pluma principal	147.6 ft
	Boom luffing angle range (min. / max.) · Ángulos de elevación de la pluma (mín. / máx.)	-2° / +78°
	Boom raising / lowering time⁽¹⁾ · Tiempo de elevación / descenso de la pluma ⁽¹⁾	70 s / 60 s
	Boom extension / retraction time⁽¹⁾ · Tiempo de extensión / retracción de la pluma ⁽¹⁾	90 s / 140 s

Hoist · Cabrestante

	Hydraulic motor · Motor hidráulico Rope roller device · Sistema de tensado de cable Normally engaged brake · Freno activado en estado normal	
	2 speeds · 2 velocidades	
	Max.⁽¹⁾ · Máx.⁽¹⁾	338 ft/min.
	Rotational resistant · Antirotación	
		3/4"
		722 ft
	Permissible line pull · Tracción de cable admisible	15,062 lbs

Upper Structure · Superestructura

	Modular counterweight. 2 configurations · Contrapeso modular. 2 configuraciones	
	<ul style="list-style-type: none"> - Light counterweight (with dedicated load chart) · Contrapeso ligero (con tabla de carga dedicada) 7,700 lbs - Full counterweight 7,700 lbs + 2 x 4,950 lbs · Contrapeso completo 7,700 lbs + 2 x 4,950 lbs 17,600 lbs 	
	Non stop · Sin fin	360°
	Maximum speed⁽¹⁾ · Velocidad máxima ⁽¹⁾	1 rpm
	Hydraulic motor · Motor hidráulico	
	Planetary reducer · Reductor planetario	

TECHNICAL SPECIFICATIONS

TRT 80US

ESPECIFICACIÓN TÉCNICA

Cab and Controls · Cabina y controles



S-pace cab:

- Sliding door** · Puerta deslizante
- Wide visibility** · Amplia visibilidad
- Front and upper window with windscreen wiper** · Luna frontal y superior con limpiaparabrisas
- Upper windows can be opened** · Lunas superiores con apertura
- Tiltable cab up to 17°** · Cabina abatible hasta 17°
- Fully adjustable seat onto shockproof suspensions** · Asiento totalmente ajustable con suspensión anti-impacto
- Equipped with tiltable arm rests with integrated hand controls for crane operation** · Equipado con apoyabrazos abatible con controles integrados para operación de grúa
- Emergency engine stop** · Parada de emergencia del motor
- Radio with CD player and USB port** · Radio con reproductor de CD y puerto usb
- Seat belts** · Cinturones de seguridad



- Climatized cab** · Cabina climatizada
- Air-conditioning** · Climatización



- TEOS – Terex Operating System. Electronic control with 10" touch screen display** · TEOS – Sistema Operativo Terex. Control electrónico con pantalla táctil de 10"
- Electro-proportional joysticks** · Joystick electroproporcionados



- Adjustable working LED light outside the cab (3 lights)** · Luz de trabajo LED ajustable en el exterior de la cabina (3 luces)



- T-LINK Telematics** · Sistema telemático T-LINK

Carrier · Chasis



Cummins QSB6.7 – Tier 4f · Cummins QSB6.7 – Tier 4f

- No. of cylinders** · Nº cilindros 6
- Rated power** · Potencia nominal 225 hp @ 2200 rpm
- Maximum gross torque** · Par de fuerza máx. 875 lbs/ft @ 1300 rpm
- Fuel tank capacity** · Volumen depósito combustible 66 gallons
- Diesel Exhaust Fluid (DEF)** · Fluido para descarga de diesel (DEF) 10 gallons



- 4 wheel drive permanent** · Tracción a 4 ruedas permanente






- Front wheel steering** · Dirección en las ruedas delanteras
- Rear wheel steering** · Dirección en las ruedas traseras
- Four wheel steering concentric** · Dirección en las cuatro ruedas, concéntrica
- Four wheel steering crab** · Dirección en las cuatro ruedas, modo cangrejo

TECHNICAL SPECIFICATIONS

TRT 80US


ESPECIFICACIÓN TÉCNICA

	One triple pump: first section piston pump, second and third gear pumps · Una bomba triple: bomba de pistón en primera sección, bombas de engranajes en segunda y tercera	
	Electric circuit with two batteries 12 V / 140 Ah · Circuito eléctrico con dos baterías 12 V / 140 Ah	24 V
	Rear axle differential lock · Bloqueo diferencial eje trasero	





Vehicle Performance · Prestaciones del vehículo

	Max.(2) · Máx.(2)	> 76 %
	Max.(2) · Máx.(2)	18 mph
	Min. / Max. · Min. / Máx.	-4° F / 113° F

Tires · Neumáticos

	Earth moving style · Para movimiento de tierra	26.5
--	---	------



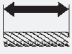





Options · Opciones

	Single sheave · Una polea	
	2-section jib · Jib de 2-secciones: Side stowable · Almacenable lateralmente Angular offsets · Inclinación	26.2 ft / 49.2 ft 0° / 20° / 40°
	Cameras · Cámaras Radio remote controller · Mando a distancia por radio	
	Hydraulic motor · Motor hidráulico Rope roller device · Sistema de tensado de cable Normally engaged brake · Freno activado en estado normal	
	2 speeds · 2 velocidades Max.(1) · Máx.(1)	338 ft/min.

TECHNICAL SPECIFICATIONS

TRT 80US





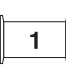
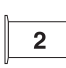


ESPECIFICACIÓN TÉCNICA

	Rotational resistant · Antirotación	
		3/4"
		722 ft
	Permissible line pull · Tracción de cable admisible	15,062 lbs
	Outrigger control from the ground · Control externo de los apoyos estabilizadores	
	Cummins QSB6.7 Stage IIIA – Tier 3 · Cummins QSB6.7 Stage IIIA – Tier 3	
	No. of cylinders · N° cilindros	6
	Rated power · Potencia nominal	220 hp @ 2200 rpm
	Maximum gross torque · Par de fuerza máx.	700 lbs/ft @ 1500 rpm
	Fuel tank capacity · Volumen depósito combustible	66 gallons
	Kit for engine pre-warming · Kit de precalentamiento del motor	
	Earth moving style · Para movimiento de tierra	
	Spare wheel · Rueda de repuesto	23.5
Emergency engine stop on carrier · Parada de emergencia del motor en el chasis		
Spark arrestor on exhaust pipe muffler · Parachispas en el silenciador del tubo de escape		
Anemometer · Anemómetro		
Rear towing hook · Eganche de remolque		
Wooden box for cab protection in sea shipment · Caja de madera para proteger la cabina para el transporte marítimo		
Removable parts disassembling and put into wooden box tied to the crane · Desmontaje de las piezas desmontables y colocación en caja de madera fijada a la grúa		
Anti-corrosive protective waxing for sea shipping · Aplicación de cera de protección para el transporte marítimo		
Special customer paint of all boom elements · Pintura especial en todas las secciones de la pluma		
Special heavy painting suitable for corrosive environments · Pintura especial para ambientes corrosivos		

TECHNICAL SPECIFICATIONS

TRT 80US

ESPECIFICACIÓN TÉCNICA

								Standard	Optional
							Estándar	Opcional	
80 USt	6	12	•			•	•		
80 USt	6	12	•		•			•	
22 USt	1	3	•	•				•	
11 USt	0	1	•	•				•	

NOTES TO LIFTING CAPACITY

TRT 80US

NOTAS SOBRE LA CAPACIDAD DE ELEVACIÓN

Weight of hook blocks and slings is considered part of the load and must be subtracted from the capacity ratings. Consult operation manual for further details.

Note: Data published herein is intended as a guideline only and shall not be construed to warrant applicability for lifting purposes. For actual crane operation refer to the computer charts and the operating manual, both of which are supplied with the crane.

Los pesos de los ganchos y las eslingas se consideran parte de la carga y tienen que ser restados de las capacidades nominales. Consulte el manual de instrucciones para más detalles.

Nota: Los datos publicados se proporcionan a título informativo, por tanto, no se consideraran vinculantes a los efectos de la garantía de la capacidad de elevación.

Para operar la grúa deben cumplirse las tablas originales y el manual de instrucciones suministrados con la grúa.

Lined area for notes.

A large rectangular area with a light gray background and horizontal white lines, serving as a template for notes. The lines are evenly spaced and extend across the width of the page, providing a structured space for writing.

TEREX ROUGH TERRAIN CRANES

Terex USA, LLC
3147 South 17th Street - Suite 100
Wilmington, NC 28412
Ph: +1-877-698-3739
Email: mktg.cranes@terex.com

February 2023. Product specifications and prices are subject to change without notice or obligation. The photographs and/or drawings in this document are for illustrative purposes only. Refer to the appropriate Operator's Manual for instructions on the proper use of this equipment. Failure to follow the corresponding Operator's Manual when using our equipment or to otherwise act responsibly may result in serious injury or death. The only warranty applicable to our equipment is the standard written warranty applicable to the particular product and sale and Terex makes no other warranty, express or implied. Products and services listed may be trademarks, service marks or trade-names of Terex Corporation and/or its subsidiaries in the USA and other countries. All rights are reserved. Terex, the Terex Crown design and Works For You are trademarks of Terex Corporation or its subsidiaries.

Febrero 2023. Las especificaciones y los precios de los productos están sujetos a cambios sin necesidad de previo aviso ni ninguna otra obligación. Las fotografías y/o dibujos de este documento tienen un fin meramente ilustrativo. Consulte el correspondiente manual de instrucciones del operario para obtener más información sobre el uso correcto de esta maquinaria. No respetar el manual del operario al utilizar la maquinaria o actuar de forma irresponsable puede provocar lesiones graves e incluso mortales. La única garantía aplicable a nuestra maquinaria es la garantía escrita estándar de cada producto y venta. Terex no amplía dicha garantía de forma expresa ni implícita. Los productos y servicios mencionados pueden ser marcas comerciales, marcas de servicio o nombres de marca de Terex Corporation o de alguna de sus filiales en Estados Unidos y otros países. Todos los derechos reservados. Terex, el diseño de la corona Terex y Works For You son marcas registradas de Terex Corporation o de sus filiales.



www.terex.com/rough-terrain-cranes

Brochure Reference: RT-DS-I-E/S-TRT80US-02/23



WORKS FOR YOU.™