



TRT 55US
55 US capacity class
Rough terrain crane
Datasheet
imperial

TRT 55US



LEVEL UP

CONTENTS

TRT 55US

INDICE

	Page · Página:
Key · Lejenda	3
Highlights · Características destacadas	4
Weights · Pesos	5
Dimensions · Dimensiones	6-7
Steering Radii · Radios de dirección	8
Range Graph – Main Boom · Diagrama de carga	9
Load Chart – Main Boom. US STANDARD ASME B30.5 · Tabla de carga	10-17
Range Graph – Jib · Diagrama de carga	18
Load Chart – Jib. US STANDARD ASME B30.5 · Tabla de carga	19
Technical Specifications · Especificación técnica	
Boom · Pluma	20
Hoist · Cabrestante	20
Upper Structure · Superestructura	20
Cab and Controls · Cabina y controles	21
Carrier · Chasis	21
Vehicle Performance · Prestaciones del vehículo.....	22
Tires · Neumáticos	22
Options · Opciones	22-23
Notes to lifting capacity · Notas sobre la capacidad de elevación	25

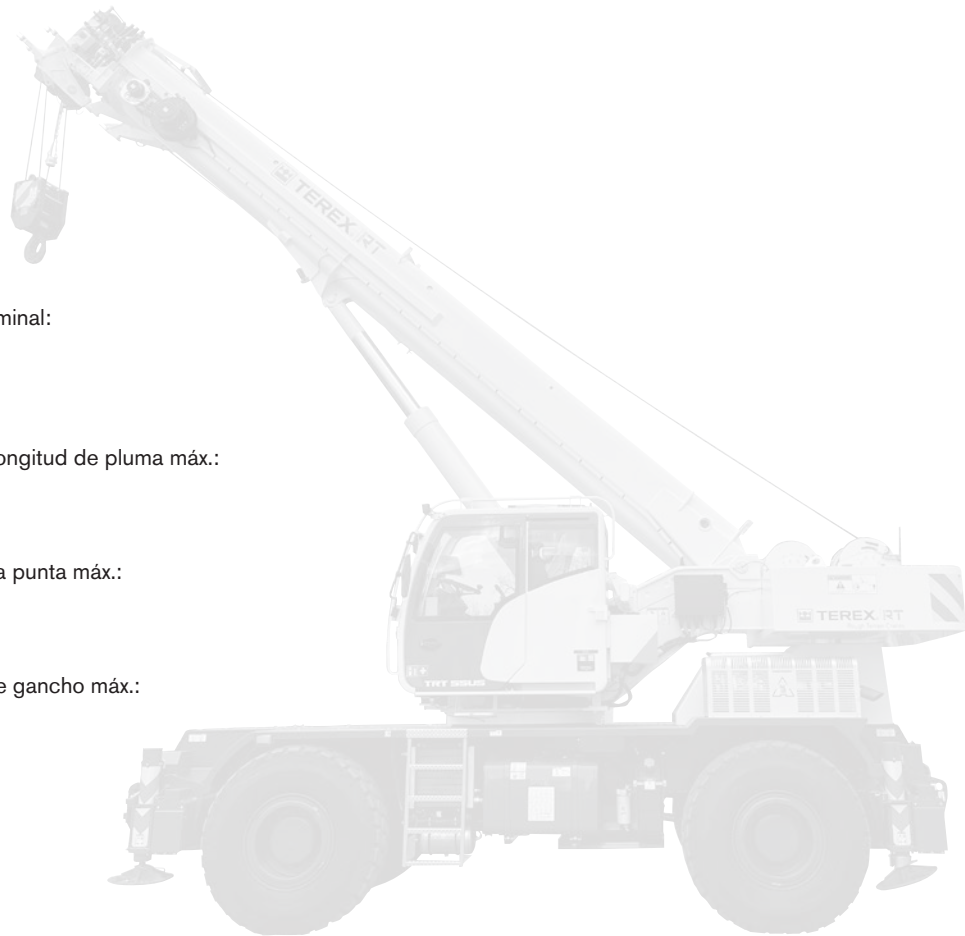
LEJENDA

	Counterweight · Contrapeso		No. of lines · No ramales
	Main boom · Pluma principal		Single hook · Gancho simple
	Boom length · Longitud pluma		Performance · Prestaciones
	Boom extension · Extensión		Boom elevation angle · Ángulo elevación pluma
	Tip height · Altura de la punta		Working radius · Radio de trabajo
	Angular offsets · Inclinación		Min. distance between hook block and boom head Distancia mínima gancho a cabeza pluma
	Auxiliary head · Cabeza auxiliar		Slewing locked · Giro bloqueado
	Slewing / Allowable range · Giro / Rango admisible		Slewing gears · Sistema de giro
	Outriggers / Lifting on outriggers Estabilizadores / Elevación sobre estabilizadores		Lifting on wheels / Pick & Carry Elevación sobre ruedas / pick & carry
	Main hoist · Cabrestante principal		Auxiliary hoist · Cabrestante auxiliar
	Hoist speed · Velocidad cabrestante		Rope length · Longitud cable
	Rope · Cable		Line pull · Tracción cable
	Rope diameter · Diámetro cable		Tires · Neumáticos
	Hook block · Gancho		Engine · Motor
	Cab · Cabina		Steering · Dirección
	Controls · Controles		Speed · Velocidad
	Mechanical transmission · Transmisión mecánica		Heating / Air conditioning · Calefacción / Climatización
	HYDR Hydraulics · Sistema hidráulico		Gradeability · Pendiente máx.
	Operation temperature · Temperatura de servicio		Gross vehicle weight · Peso bruto vehículo
	Lights · Luces		Weight on front axle · Peso eje delantero
	Electric circuit · Circuito eléctrico		Weight on rear axle · Peso eje trasero
	Crane / Crane in standard configuration Grúa / Grúa configuración estándar		No. of sheaves · Nº poleas
	Crane without counterweight · Grúa sin contrapeso		Rams-horn hook · Aparejo gancho doble
	Rated weight on hook block · Carga nominal en gancho		Differential lock · Bloqueo diferencial

HIGHLIGHTS

CARACTERÍSTICAS DESTACADAS

TRT 55US


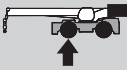

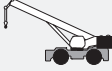










- ▶ Rated capacity · Capacidad nominal:
55 USt at 8.2 ft working radius
55 USt a 8.2 ft radio de trabajo
- ▶ Maximum main boom length · Longitud de pluma máx.:
123 ft
- ▶ Maximum tip height · Altura de la punta máx.:
130 ft
- ▶ Maximum hook height · Altura de gancho máx.:
123 ft

WEIGHTS

PESOS

TRT 55US

				
 without hook block sin gancho		62,170 lbs	28,946 lbs	33,223 lbs
Add / Subtract for main optional equipment Sumar / restar para equipamiento opcional principal				
 26.3 ft boxed stowed aside the boom 26.3 ft tipo cajón almacenado lateralmente a la pluma		+ 1,323 lbs		
 2 **		+ 1,323 lbs	- 154 lbs	+ 1,477 lbs
 55 US^t*		+ 822 lbs	+ 1,390 lbs	- 507 lbs
 35 US^t*		+ 617 lbs	+ 970 lbs	- 353 lbs
 25 US^t*		+ 573 lbs	+ 904 lbs	- 331 lbs
 15 US^t*		+ 430 lbs	+ 672 lbs	- 243 lbs
 10 US^t*		+ 375 lbs	+ 595 lbs	- 220 lbs
 5 US^t*		+ 110 lbs	+ 176 lbs	- 66 lbs

NOTE: Values are subject to 2% variation · NOTA: Valores sujetos a una variación del 2%

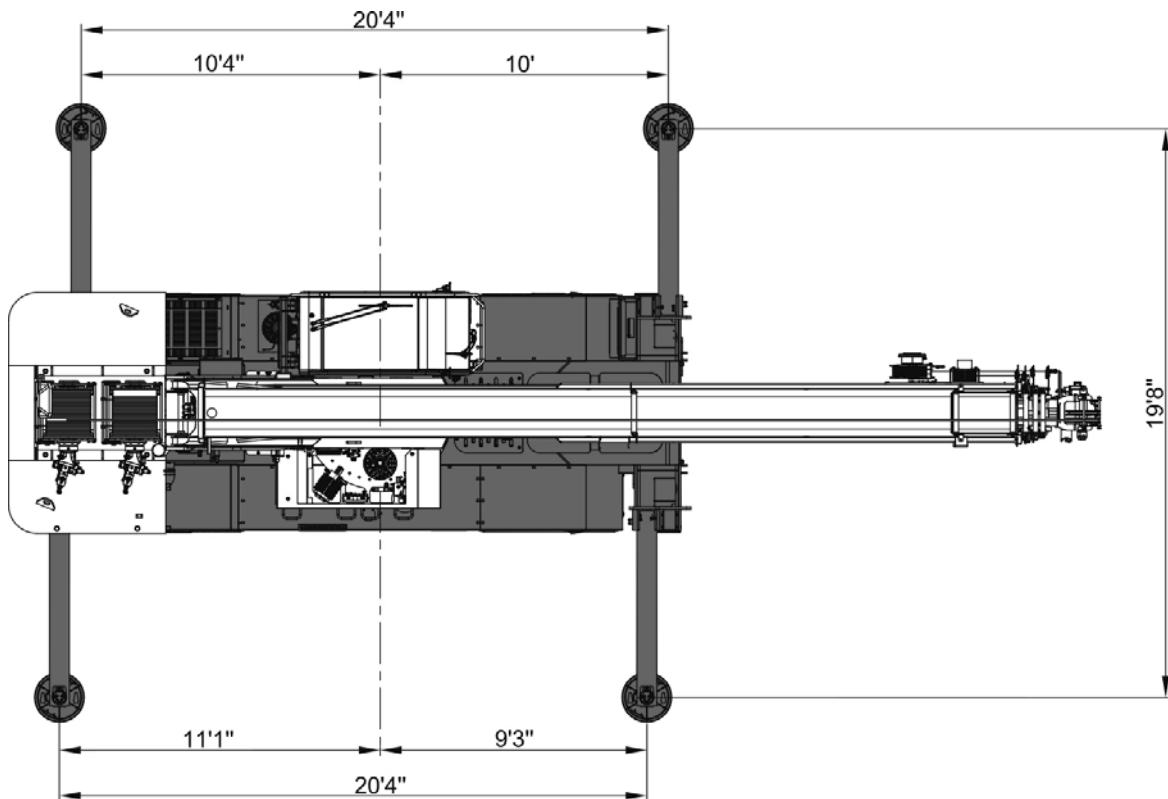
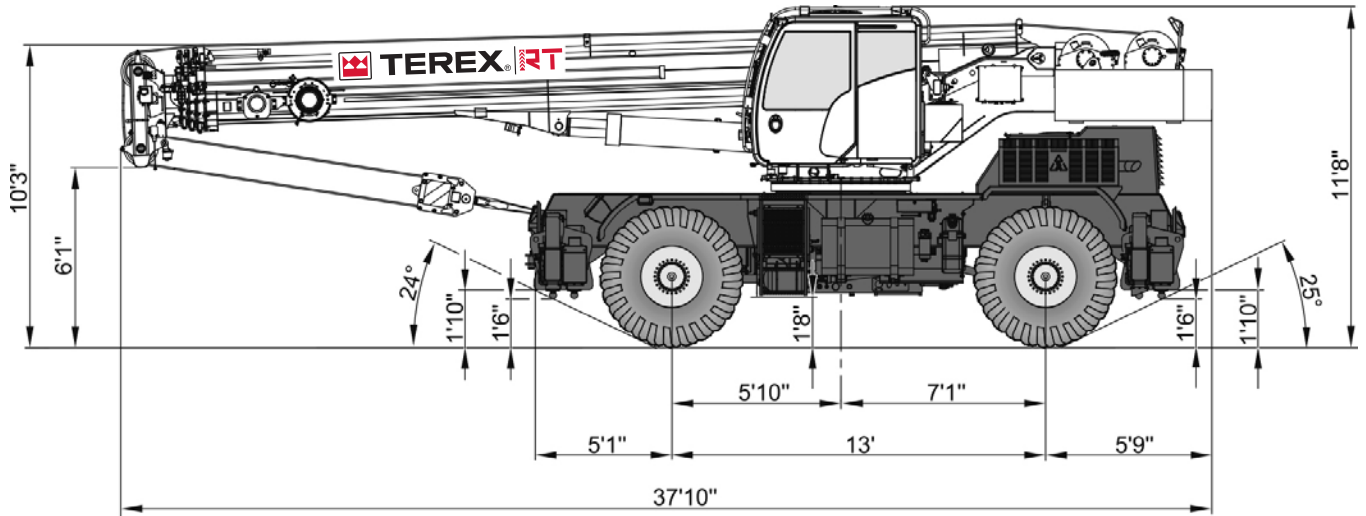
* Weight distribution calculated considering the hook block linked to the front shield of the machine ·
Distribución de pesos calculada considerando el gancho asegurado al protector frontal

** Weight includes rope · El peso incluye soporte cabrestante

DIMENSIONS

TRT 55US

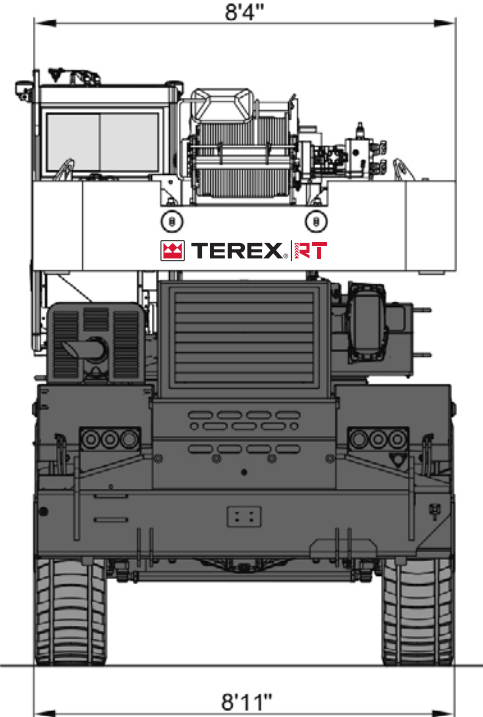
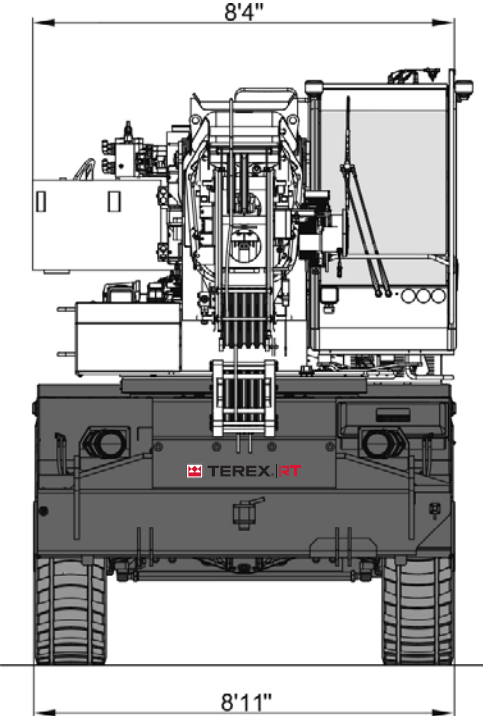
DIMENSIONES



DIMENSIONS

DIMENSIONES

TRT 55US

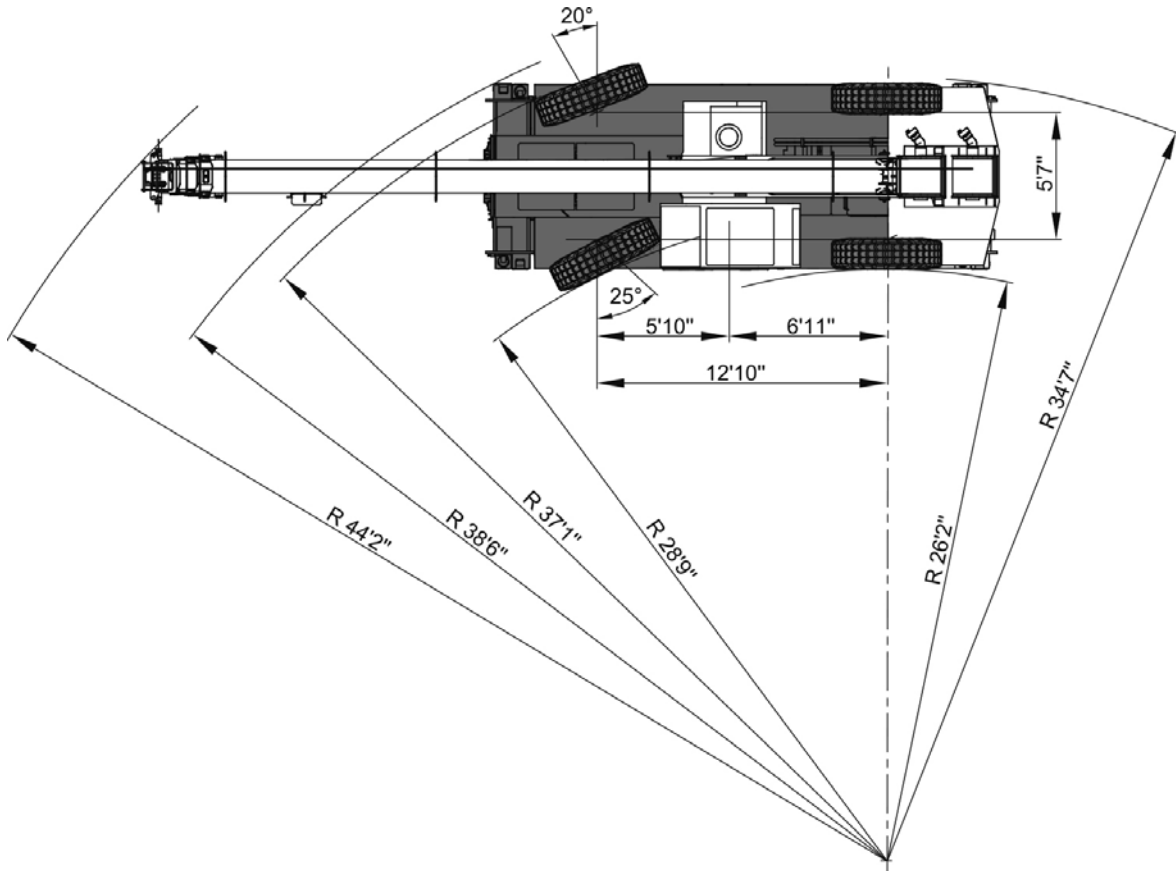


STEERING RADII

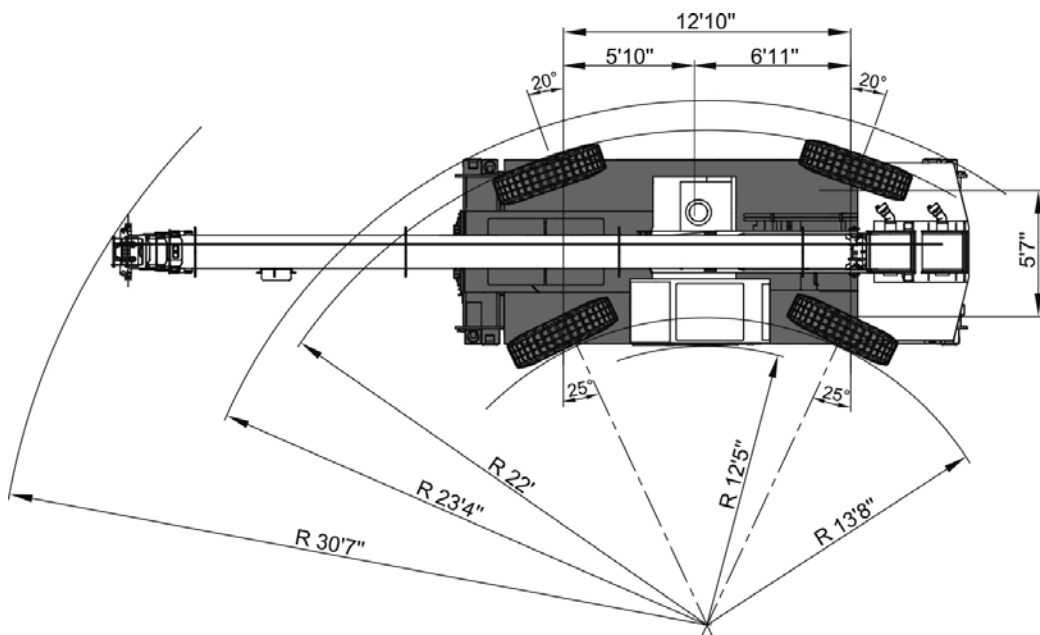
RADIOS DE DIRECCIÓN

TRT 55US

Two wheel steer · Dirección en dos ruedas



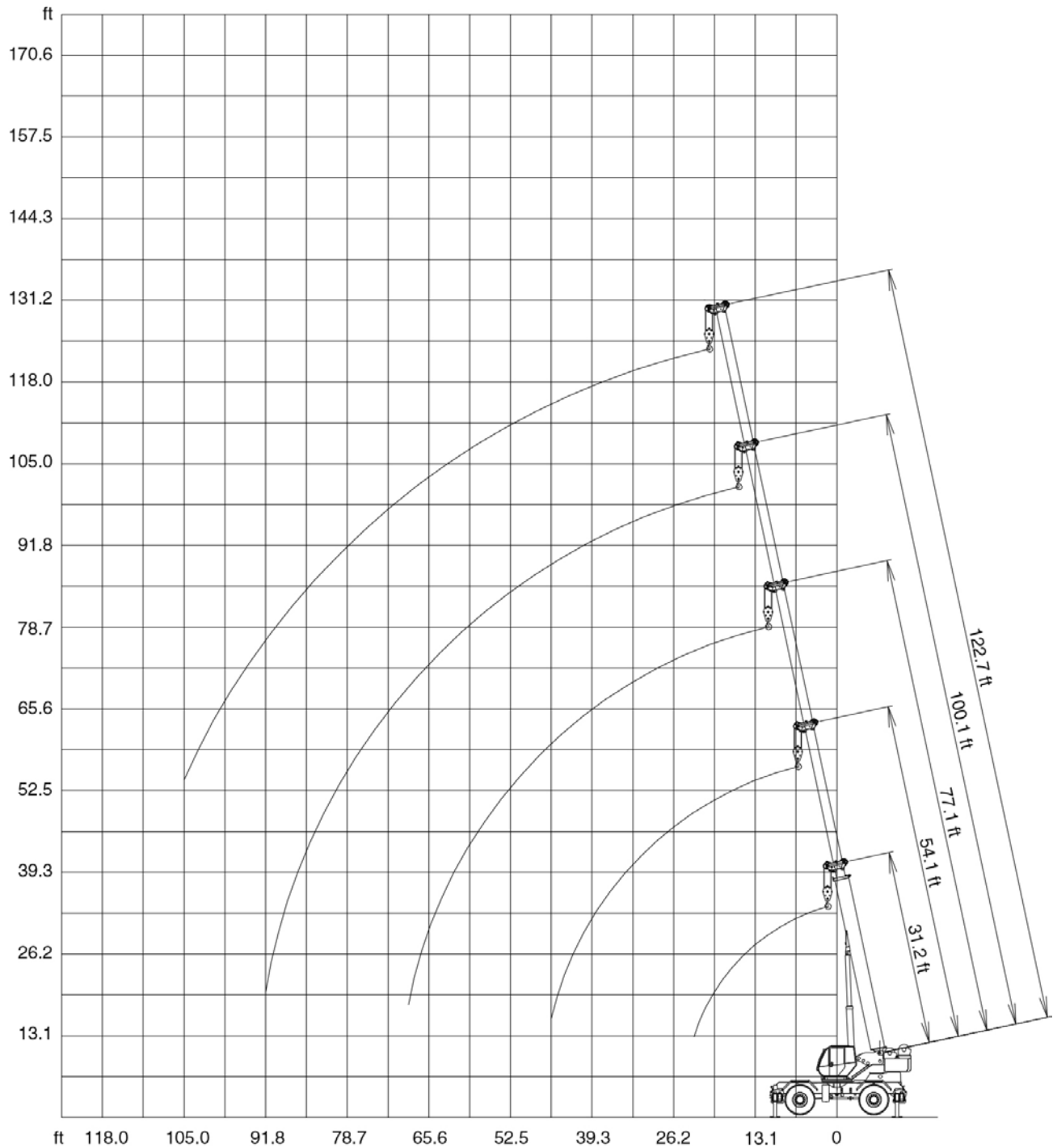
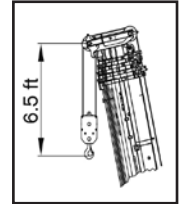
Four wheel steer · Dirección en cuatro ruedas



RANGE GRAPH – MAIN BOOM

TRT 55US

DIAGRAMA DE CARGA



LOAD CHART – MAIN BOOM US STANDARD ASME B30.5

TRT 55US

TABLA DE CARGA

Outriggers · Estabilizadores 100 %

**Mode 1:
Stability · Estabilidad**



		12,100 lbs		19.7 ft x 20.3 ft		360°		US STANDARD ASME B30.5			
		31.2 ft	42.7 ft	54.1 ft	65.0 ft	77.1 ft	87.9 ft	100.1 ft	111.9 ft	122.7 ft	
ft	kip	kip	kip	kip	kip	kip	kip	kip	kip	kip	ft
8.2	110.3	-	-	-	-	-	-	-	-	-	8.2
9.8	88.2	71.9	57.2	34.2	-	-	-	-	-	-	9.8
11.5	78.8	72.8	52.3	34.4	34.0	-	-	-	-	-	11.5
13.1	72.7	67.9	48.5	34.6	34.0	-	-	-	-	-	13.1
14.8	67.1	63.3	45.1	34.4	34.0	31.9	-	-	-	-	14.8
16.4	62.9	59.0	42.0	34.2	33.4	30.6	-	-	-	-	16.4
19.7	51.0	46.8	37.0	32.4	29.3	26.9	22.1	-	-	-	19.7
23.0	37.2	36.1	33.0	28.7	26.0	24.0	21.3	16.4	-	-	23.0
26.2	-	27.9	27.0	25.7	23.3	21.5	19.4	16.4	12.2	-	26.2
29.5	-	22.4	21.8	22.5	21.1	19.3	17.6	15.6	11.8	-	29.5
32.8	-	18.5	18.0	18.6	19.1	17.5	16.2	14.8	11.0	-	32.8
36.1	-	-	15.1	15.8	16.4	16.1	14.7	13.6	10.3	-	36.1
39.4	-	-	12.9	13.6	14.1	14.3	13.6	12.7	9.7	-	39.4
42.7	-	-	11.0	11.7	12.2	12.6	12.5	11.7	9.2	-	42.7
45.9	-	-	9.6	10.4	10.7	11.0	11.3	10.9	8.7	-	45.9
49.2	-	-	-	9.0	9.5	9.8	10.0	9.9	8.2	-	49.2
52.5	-	-	-	7.9	8.4	8.7	8.9	8.8	7.6	-	52.5
55.8	-	-	-	7.1	7.5	7.8	8.1	8.3	7.2	-	55.8
59.1	-	-	-	-	6.7	6.9	7.3	7.5	6.7	-	59.1
62.3	-	-	-	-	6.0	6.3	6.6	6.7	6.3	-	62.3
65.6	-	-	-	-	5.4	5.7	6.0	6.2	6.0	-	65.6
68.9	-	-	-	-	4.9	5.2	5.4	5.6	5.3	-	68.9
72.2	-	-	-	-	-	4.6	4.9	5.1	4.9	-	72.2
75.5	-	-	-	-	-	4.2	4.4	4.6	4.4	-	75.5
78.7	-	-	-	-	-	3.8	4.1	4.2	4.2	-	78.7
82.0	-	-	-	-	-	-	3.6	3.9	4.0	-	82.0
85.3	-	-	-	-	-	-	3.3	3.5	3.5	-	85.3
88.6	-	-	-	-	-	-	3.1	3.2	3.3	-	88.6
91.9	-	-	-	-	-	-	2.8	3.0	3.1	-	91.9
95.1	-	-	-	-	-	-	-	2.6	2.8	-	95.1
98.4	-	-	-	-	-	-	-	2.4	2.5	-	98.4
101.7	-	-	-	-	-	-	-	2.2	2.3	-	101.7
105.0	-	-	-	-	-	-	-	-	2.1	-	105.0
108.3	-	-	-	-	-	-	-	-	1.9	-	108.3
111.5	-	-	-	-	-	-	-	-	1.8	-	111.5
114.8	-	-	-	-	-	-	-	-	1.5	-	114.8
118.1	-	-	-	-	-	-	-	-	-	-	118.1

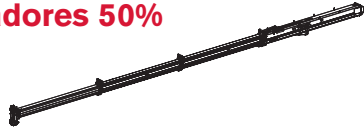
LOAD CHART – MAIN BOOM US STANDARD ASME B30.5

TRT 55US

TABLA DE CARGA

Outriggers - Estabilizadores 50%

**Mode 1:
Stability - Estabilidad**



		12,100 lbs		13.4 ft x 20.3 ft		360°		US STANDARD ASME B30.5		
	31.2 ft	42.7 ft	54.1 ft	65.0 ft	77.1 ft	87.9 ft	100.1 ft	111.9 ft	122.7 ft	
ft	kip	kip	kip	kip	kip	kip	kip	kip	kip	ft
8.2	110.3	-	-	-	-	-	-	-	-	8.2
9.8	88.2	71.9	57.2	34.2	-	-	-	-	-	9.8
11.5	78.8	72.8	52.3	34.4	34.0	-	-	-	-	11.5
13.1	57.9	55.3	48.5	34.6	34.0	-	-	-	-	13.1
14.8	45.4	43.6	45.1	34.4	34.0	31.9	-	-	-	14.8
16.4	37.3	35.6	34.7	34.2	33.4	30.6	-	-	-	16.4
19.7	26.7	25.6	24.8	25.5	26.0	26.9	22.1	-	-	19.7
23.0	20.4	19.4	18.8	19.5	20.1	20.5	21.3	16.4	-	23.0
26.2	-	15.2	14.7	15.4	16.0	16.4	16.5	16.4	12.2	26.2
29.5	-	12.2	11.8	12.5	13.2	13.5	13.8	13.7	11.8	29.5
32.8	-	9.9	9.6	10.4	10.9	11.3	11.5	11.6	11.0	32.8
36.1	-	-	7.8	8.6	9.2	9.5	9.8	9.9	10.3	36.1
39.4	-	-	6.4	7.1	7.6	8.1	8.4	8.5	8.5	39.4
42.7	-	-	5.2	6.0	6.5	6.8	7.1	7.3	7.5	42.7
45.9	-	-	4.3	5.0	5.5	6.0	6.2	6.4	6.5	45.9
49.2	-	-	-	4.2	4.7	5.1	5.4	5.6	5.7	49.2
52.5	-	-	-	3.5	4.1	4.4	4.6	4.9	5.1	52.5
55.8	-	-	-	2.9	3.4	3.8	4.1	4.3	4.4	55.8
59.1	-	-	-	-	2.9	3.3	3.5	3.8	4.0	59.1
62.3	-	-	-	-	2.4	2.8	3.1	3.3	3.4	62.3
65.6	-	-	-	-	2.0	2.4	2.6	2.9	3.1	65.6
68.9	-	-	-	-	1.7	2.0	2.3	2.5	2.6	68.9
72.2	-	-	-	-	-	1.7	2.0	2.2	2.3	72.2
75.5	-	-	-	-	-	1.3	1.7	1.9	2.0	75.5
78.7	-	-	-	-	-	1.1	1.3	1.5	1.8	78.7
82.0	-	-	-	-	-	-	1.1	1.3	1.5	82.0
85.3	-	-	-	-	-	-	0.9	1.1	1.2	85.3
88.6	-	-	-	-	-	-	0.7	0.9	1.0	88.6
91.9	-	-	-	-	-	-	0.4	0.7	0.9	91.9
95.1	-	-	-	-	-	-	-	0.6	0.7	95.1
98.4	-	-	-	-	-	-	-	-	0.4	98.4

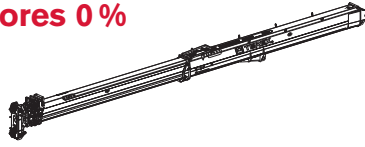
LOAD CHART – MAIN BOOM US STANDARD ASME B30.5

TRT 55US

TABLA DE CARGA

Outriggers · Estabilizadores 0 %

**Mode 2:
Strength · Resistencia**



		12,100 lbs		7.5 ft x 20.3 ft		360°		US STANDARD ASME B30.5												
		31.2 ft		42.7 ft		54.1 ft		65.0 ft		77.1 ft		87.9 ft		100.1 ft		111.9 ft		122.7 ft		
		kip		kip		kip		kip		kip		kip		kip		kip		kip		
ft		ft		ft		ft		ft		ft		ft		ft		ft		ft		
8.2	-	-	-	-	-	-	-	-	-	-	-	-	-	-	-	-	-	-	-	8.2
9.8	39.2	34.6	34.0	33.5	-	-	-	-	-	-	-	-	-	-	-	-	-	-	-	9.8
11.5	31.1	31.8	31.5	30.9	29.7	-	-	-	-	-	-	-	-	-	-	-	-	-	-	11.5
13.1	24.9	25.7	25.8	25.4	28.2	-	-	-	-	-	-	-	-	-	-	-	-	-	-	13.1
14.8	20.5	21.5	21.6	21.5	21.5	22.2	-	-	-	-	-	-	-	-	-	-	-	-	-	14.8
16.4	17.3	18.2	18.6	18.4	18.6	18.2	-	-	-	-	-	-	-	-	-	-	-	-	-	16.4
19.7	12.8	13.7	14.3	14.3	14.4	14.2	14.1	-	-	-	-	-	-	-	-	-	-	-	-	19.7
23.0	9.8	10.7	11.1	11.4	11.6	11.5	11.0	9.9	-	-	-	-	-	-	-	-	-	-	-	23.0
26.2	-	8.5	9.0	9.3	9.5	9.5	9.3	8.3	7.4	-	-	-	-	-	-	-	-	-	-	26.2
29.5	-	6.7	7.4	7.6	7.8	7.9	7.8	6.8	6.1	6.1	-	-	-	-	-	-	-	-	-	29.5
32.8	-	5.5	6.1	6.3	6.5	6.6	6.6	5.7	5.1	5.1	4.3	-	-	-	-	-	-	-	-	32.8
36.1	-	-	5.1	5.3	5.5	5.6	5.7	5.0	4.3	4.3	3.6	3.1	-	-	-	-	-	-	-	36.1
39.4	-	-	4.2	4.5	4.6	4.9	5.0	4.2	3.6	3.6	3.1	2.5	-	-	-	-	-	-	-	39.4
42.7	-	-	3.5	3.8	4.0	4.2	4.3	3.6	3.1	3.1	2.5	2.0	-	-	-	-	-	-	-	42.7
45.9	-	-	3.0	3.2	3.4	3.5	3.6	3.2	2.5	2.5	2.0	1.4	-	-	-	-	-	-	-	45.9
49.2	-	-	-	2.8	3.0	3.1	3.2	2.8	2.1	2.1	1.4	0.9	-	-	-	-	-	-	-	49.2
52.5	-	-	-	2.3	2.5	2.6	2.8	2.3	1.8	1.8	1.2	0.7	-	-	-	-	-	-	-	52.5
55.8	-	-	-	1.9	2.1	2.2	2.3	2.0	1.4	1.4	0.9	0.7	-	-	-	-	-	-	-	55.8
59.1	-	-	-	-	1.8	2.0	2.1	1.7	1.2	1.2	0.9	0.7	-	-	-	-	-	-	-	59.1
62.3	-	-	-	-	1.5	1.7	1.8	1.3	0.9	1.3	0.9	0.7	-	-	-	-	-	-	-	62.3
65.6	-	-	-	-	1.2	1.3	1.4	1.1	0.7	1.1	0.9	0.7	-	-	-	-	-	-	-	65.6
68.9	-	-	-	-	1.0	1.1	1.2	0.8	-	1.1	0.9	0.7	-	-	-	-	-	-	-	68.9
72.2	-	-	-	-	-	0.9	1.0	0.7	-	0.9	0.7	0.6	-	-	-	-	-	-	-	72.2
75.5	-	-	-	-	-	0.7	0.8	0.4	-	0.7	0.6	0.5	-	-	-	-	-	-	-	75.5
78.7	-	-	-	-	-	0.6	0.7	-	-	0.6	0.5	0.4	-	-	-	-	-	-	-	78.7
82.0	-	-	-	-	-	-	0.4	-	-	0.4	0.3	0.2	-	-	-	-	-	-	-	82.0
85.3	-	-	-	-	-	-	-	-	-	-	0.2	0.1	-	-	-	-	-	-	-	85.3

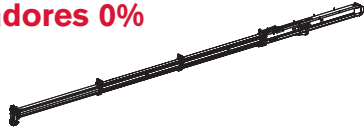
LOAD CHART – MAIN BOOM US STANDARD ASME B30.5

TRT 55US

TABLA DE CARGA

Outriggers - Estabilizadores 0%

**Mode 1:
Stability - Estabilidad**



		12,100 lbs		0 mph		US STANDARD ASME B30.5			
		31.2 ft		42.7 ft		54.1 ft		65.0 ft	
		kip		kip		kip		kip	
8.2	ft	25.6	-	-	-	-	-	8.2	ft
9.8	ft	21.8	-	-	-	-	-	9.8	ft
11.5	ft	19.0	-	-	-	-	-	11.5	ft
13.1	ft	16.5	14.7	-	-	-	-	13.1	ft
14.8	ft	14.0	12.4	-	-	-	-	14.8	ft
16.4	ft	12.0	10.5	-	-	-	-	16.4	ft
19.7	ft	9.0	7.8	6.8	-	-	-	19.7	ft
23.0	ft	6.8	5.8	5.1	5.4	-	-	23.0	ft
26.2	ft	-	4.4	3.8	4.2	-	-	26.2	ft
29.5	ft	-	3.3	2.8	3.2	-	-	29.5	ft
32.8	ft	-	2.5	2.0	2.4	-	-	32.8	ft
36.1	ft	-	-	1.3	1.8	-	-	36.1	ft
39.4	ft	-	-	0.8	1.2	-	-	39.4	ft
42.7	ft	-	-	-	0.8	-	-	42.7	ft
45.9	ft	-	-	-	-	-	-	45.9	ft

		12,100 lbs		1.2 mph		US STANDARD ASME B30.5			
		31.2 ft		42.7 ft		54.1 ft		65.0 ft	
		kip		kip		kip		kip	
8.2	ft	25.4	-	-	-	-	-	8.2	ft
9.8	ft	22.5	22.1	21.8	22.3	-	-	9.8	ft
11.5	ft	20.1	19.6	19.4	19.9	-	-	11.5	ft
13.1	ft	18.1	17.6	17.4	17.9	-	-	13.1	ft
14.8	ft	16.3	15.9	15.7	16.1	-	-	14.8	ft
16.4	ft	14.8	14.6	14.1	14.6	-	-	16.4	ft
19.7	ft	12.4	11.9	11.7	12.1	-	-	19.7	ft
23.0	ft	10.4	10.1	9.9	10.4	-	-	23.0	ft
26.2	ft	-	8.4	8.2	8.8	-	-	26.2	ft
29.5	ft	-	7.3	6.8	7.3	-	-	29.5	ft
32.8	ft	-	6.4	5.7	6.0	-	-	32.8	ft
36.1	ft	-	-	4.6	5.1	-	-	36.1	ft
39.4	ft	-	-	3.8	4.2	-	-	39.4	ft
42.7	ft	-	-	3.1	3.5	-	-	42.7	ft
45.9	ft	-	-	2.4	2.9	-	-	45.9	ft
49.2	ft	-	-	-	2.4	-	-	49.2	ft
52.5	ft	-	-	-	2.0	-	-	52.5	ft
55.8	ft	-	-	-	1.5	-	-	55.8	ft
59.1	ft	-	-	-	-	-	-	59.1	ft

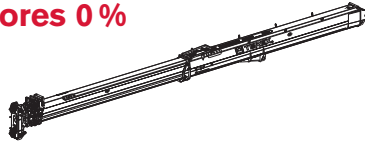
LOAD CHART – MAIN BOOM US STANDARD ASME B30.5

TRT 55US

TABLA DE CARGA

Outriggers · Estabilizadores 0 %

**Mode 2:
Strength · Resistencia**



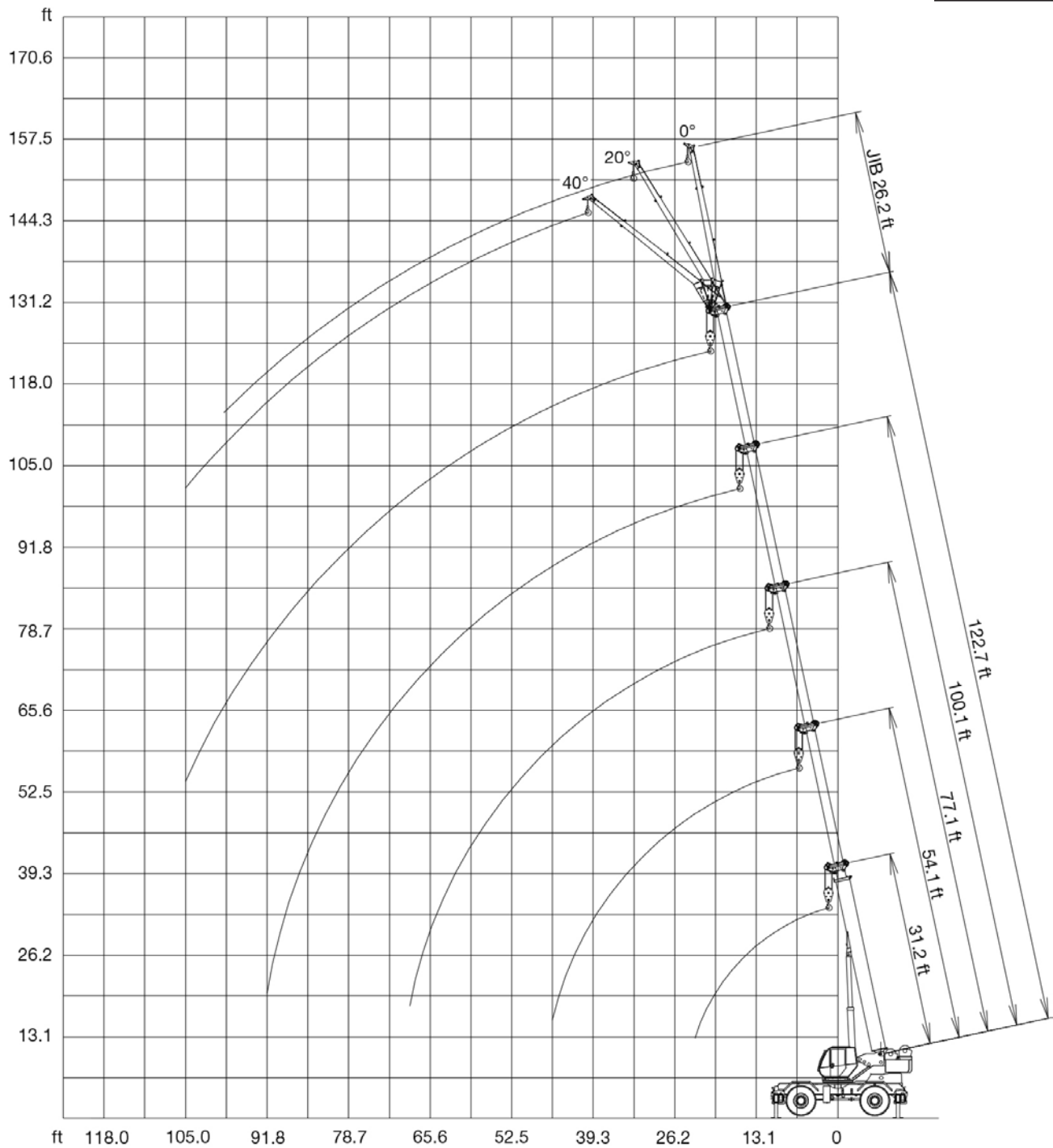
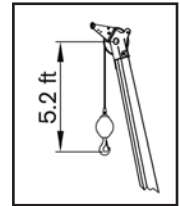
		12,100 lbs		0 mph		US STANDARD ASME B30.5			
		31.2 ft		42.7 ft		54.1 ft		65.0 ft	
		kip		kip		kip		kip	
8.2	ft	25.6	-	-	-	-	-	8.2	ft
9.8	ft	21.8	-	-	-	-	-	9.8	ft
11.5	ft	19.0	-	-	-	-	-	11.5	ft
13.1	ft	16.5	16.2	-	-	-	-	13.1	ft
14.8	ft	14.0	13.9	-	-	-	-	14.8	ft
16.4	ft	12.0	12.0	-	-	-	-	16.4	ft
19.7	ft	9.0	9.3	9.3	9.3	-	-	19.7	ft
23.0	ft	6.8	7.1	7.2	7.2	7.2	7.2	23.0	ft
26.2	ft	-	5.7	5.8	5.8	5.8	5.8	26.2	ft
29.5	ft	-	4.6	4.7	4.9	4.9	4.9	29.5	ft
32.8	ft	-	3.8	4.0	4.0	4.0	4.0	32.8	ft
36.1	ft	-	-	3.3	3.3	3.3	3.3	36.1	ft
39.4	ft	-	-	2.6	2.8	2.8	2.8	39.4	ft
42.7	ft	-	-	2.2	2.3	2.3	2.3	42.7	ft
45.9	ft	-	-	1.8	1.9	1.9	1.9	45.9	ft
49.2	ft	-	-	-	1.5	1.5	1.5	49.2	ft
52.5	ft	-	-	-	1.2	1.2	1.2	52.5	ft
55.8	ft	-	-	-	1.0	1.0	1.0	55.8	ft
59.1	ft	-	-	-	-	-	-	59.1	ft

		12,100 lbs		1.2 mph		US STANDARD ASME B30.5			
		31.2 ft		42.7 ft		54.1 ft		65.0 ft	
		kip		kip		kip		kip	
8.2	ft	25.4	-	-	-	-	-	8.2	ft
9.8	ft	22.5	22.9	23.2	23.2	23.4	23.4	9.8	ft
11.5	ft	20.1	20.5	20.7	20.7	21.0	21.0	11.5	ft
13.1	ft	18.1	18.5	18.8	18.8	19.0	19.0	13.1	ft
14.8	ft	16.3	16.8	17.0	17.0	17.2	17.2	14.8	ft
16.4	ft	14.8	15.4	15.7	15.7	15.9	15.9	16.4	ft
19.7	ft	12.4	13.0	13.2	13.2	13.5	13.5	19.7	ft
23.0	ft	10.4	11.0	11.3	11.3	11.5	11.5	23.0	ft
26.2	ft	-	9.5	9.9	9.9	9.9	9.9	26.2	ft
29.5	ft	-	8.2	8.4	8.4	8.8	8.8	29.5	ft
32.8	ft	-	7.1	7.5	7.5	7.5	7.5	32.8	ft
36.1	ft	-	-	6.6	6.6	6.6	6.6	36.1	ft
39.4	ft	-	-	5.7	5.7	5.7	5.7	39.4	ft
42.7	ft	-	-	4.9	4.9	4.9	4.9	42.7	ft
45.9	ft	-	-	4.4	4.4	4.4	4.4	45.9	ft
49.2	ft	-	-	-	-	3.8	3.8	49.2	ft
52.5	ft	-	-	-	-	3.3	3.3	52.5	ft
55.8	ft	-	-	-	-	3.1	3.1	55.8	ft
59.1	ft	-	-	-	-	-	-	59.1	ft

RANGE GRAPH - JIB

DIAGRAMA DE CARGA

TRT 55US



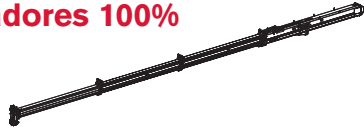
LOAD CHART – JIB US STANDARD ASME B30.5











TRT 55US

TABLA DE CARGA

Outriggers · Estabilizadores 100%

**Mode 1:
Stability · Estabilidad**








  12,100 lbs		 19.7 ft x 20.3 ft		 360°		US STANDARD ASME B30.5	
 ft	 102.0 ft +  26.2 ft			 122.7 ft +  26.2 ft			 ft
	0° kip	20° kip	40° kip	0° kip	20° kip	40° kip	
29.5	7.1	-	-	-	-	-	29.5
32.8	6.6	-	-	6.2	-	-	32.8
36.1	6.4	4.2	-	6.0	-	-	36.1
39.4	6.0	4.0	-	6.0	4.0	-	39.4
42.7	5.7	3.9	3.1	5.7	3.9	-	42.7
45.9	5.4	3.8	3.0	5.5	3.8	3.0	45.9
49.2	5.2	3.6	3.0	5.2	3.6	3.0	49.2
52.5	5.0	3.5	2.9	5.0	3.5	2.9	52.5
55.8	4.7	3.4	2.9	4.7	3.5	2.9	55.8
59.1	4.6	3.4	2.8	4.5	3.4	2.8	59.1
62.3	4.4	3.3	2.8	4.3	3.3	2.8	62.3
65.6	4.3	3.2	2.8	4.1	3.3	2.8	65.6
68.9	4.1	3.2	2.8	4.0	3.2	2.8	68.9
72.2	4.0	3.1	2.6	3.9	3.1	2.6	72.2
75.5	3.9	3.1	2.6	3.6	3.1	2.6	75.5
78.7	3.8	3.0	2.6	3.5	3.1	2.6	78.7
82.0	3.5	3.0	2.6	3.3	3.0	2.6	82.0
85.3	3.2	2.9	2.6	3.2	2.9	2.6	85.3
88.6	2.9	2.9	2.6	2.9	2.9	2.6	88.6
91.9	2.5	2.8	2.6	2.6	2.8	2.6	91.9
95.1	2.3	2.5	2.6	2.3	2.6	2.5	95.1
98.4	2.1	2.3	2.4	2.1	2.3	2.5	98.4
101.7	1.9	2.1	2.1	1.9	2.1	2.2	101.7
105.0	1.7	1.9	1.9	1.7	1.9	2.0	105.0
108.3	1.4	1.7	1.7	1.5	1.7	1.8	108.3
111.5	1.3	1.4	1.4	1.3	1.5	1.5	111.5
114.8	1.1	1.2	1.2	1.2	1.3	1.3	114.8
118.1	-	-	-	-	1.1	1.2	118.1

TECHNICAL SPECIFICATIONS







TRT 55US

ESPECIFICACIÓN TÉCNICA

Boom · Pluma

	5 sections · 5 secciones	
	Dual mode · Modo dual	
	Min. / Max. · Min. / Máx.	31.2 ft / 122.7 ft
	Max. main boom · Máx. pluma principal	130 ft
	Boom luffing angle range (min. / max.) · Ángulos de elevación de la pluma (min. / máx.)	-2° / +78°
	Boom raising / lowering time⁽¹⁾ · Tiempo de elevación / descenso de la pluma ⁽¹⁾	45 s / 70 s
	Boom extension / retraction time⁽¹⁾ · Tiempo de extensión / retracción de la pluma ⁽¹⁾	140 s / 150 s

Hoist · Cabrestante

	Hydraulic motor · Motor hidráulico Rope roller device · Sistema de tensado de cable Normally engaged brake · Freno activado en estado normal	
	2 speeds · 2 velocidades	
	Max.⁽¹⁾ · Máx.⁽¹⁾	246 ft/min.
	Rotational resistant · Antirotación	
		1 in.
		607 ft
	Permissible line pull · Tracción de cable admisible	10,116 lbs

Upper Structure · Superestructura

		12,100 lbs
	Non stop · Sin fin	360°
	Maximum speed⁽¹⁾ · Velocidad máxima ⁽¹⁾	1.0 rpm
	Hydraulic motor · Motor hidráulico Planetary reducer · Reductor planetario	

TECHNICAL SPECIFICATIONS

TRT 55US

ESPECIFICACIÓN TÉCNICA

Cab and Controls · Cabina y controles



S-pace cab · Cabina S-pace:

Sliding door · Puerta deslizante

Wide visibility · Amplia visibilidad

Front and upper window with windscreen wiper · Luna frontal y superior con limpiaparabrisas

Upper windows can be opened · Lunas superiores con apertura

Tiltable cab · Cabina abatible

Fully adjustable seat onto shockproof suspensions · Asiento totalmente ajustable con suspensión anti-impacto

Equipped with tiltable arm rests with integrated hand controls for crane operation · Equipado con apoyabrazos abatible con controles integrados para operación de grúa

Radio with CD player · Radio-CD

Seat belts · Cinturones de seguridad



Climatized cab · Cabina climatizada



Electro-proportional joysticks · Joystick electroproporcionados

Load indicator with graphic interface · Indicador de carga con interfaz gráfica



3 adjustable working lights outside the cab · 3 luces de trabajo ajustables en el exterior de la cabina



T-LINK Telematics · Sistema telemático T-LINK

Carrier · Chasis



Cummins QSB6.7 Stage IIIA - Tier 3 · Cummins QSB6.7 Stage IIIA - Tier 3

No. of cylinders · N° cilindros

6

Rated power · Potencia nominal ·

173 hp @ 2200 rpm

Maximum gross torque · Par de fuerza máx.

590 lb-ft @ 1500 rpm

Fuel tank capacity · Volumen depósito combustible

79 gallons



Powershift with 2 modes · Powershift con 2 modos:

Manual mode – 3 speeds forward and 3 speeds reverse ·
Modo manual – 3 marchas adelante y 3 de retroceso

Automatic mode – 5 speeds forward and 3 speeds reverse ·
Modo automático – 5 marchas adelante y 3 de retroceso

Permanent 4 wheel drive · Tracción permanente a 4 ruedas



Front wheel steering · Dirección en las ruedas delanteras

Rear wheel steering · Dirección en las ruedas traseras

Four wheel steering concentric · Dirección en las cuatro ruedas, concéntrica

Four wheel steering crab · Dirección en las cuatro ruedas, modo cangrejo



One double pump: first section piston pump, second gear pump ·

Una bomba doble: primera sección bomba de pistón, segunda bombas de engranajes



24 V



Rear axle differential lock · Bloqueo diferencial eje trasero

TECHNICAL SPECIFICATIONS

TRT 55US

ESPECIFICACIÓN TÉCNICA

Vehicle Performance · Prestaciones del vehículo

	Max. ⁽²⁾ · Máx. ⁽²⁾	69.7 %
	Max. ⁽²⁾ · Máx. ⁽²⁾	18.33 mph
	Min. / Max. · Min. / Máx.	-4° F / 113 °F

Tires · Neumáticos

	Earth moving style · Para movimiento de tierra	20.5 R5
--	--	---------

Options · Opciones

	Single sheave · Una polea	
	Boxed type, side stowable · Tipo cajón, almacenable lateralmente Angular offsets · Inclinación	26.2 ft 0° / 20° / 40°
	Cameras · Cámaras Radio remote controller · Mando a distancia por radio	
	Hydraulic motor · Motor hidráulico Rope roller device · Sistema de tensado de cable Normally engaged brake · Freno activado en estado normal	
	2 speeds · 2 velocidades Max. ⁽¹⁾ · Máx. ⁽¹⁾	246 ft/min.
	Rotational resistant · Antirotación	
		3/5 in.
		607 ft
	Permissible line pull · Tracción de cable admisible	10,116 lbs
	Outrigger control from the ground · Control externo de los apoyos estabilizadores	
	Cummins QSB6.7 Stage V - Tier 4f · Cummins QSB6.7 Stage V - Tier 4f No. of cylinders · N° cilindros Rated power · Potencia nominal Maximum gross torque · Par de fuerza máx. Fuel tank capacity · Volumen depósito combustible	6 173 hp @ 2200 rpm 575 lb-ft @ 1500 rpm 79 gallons

TECHNICAL SPECIFICATIONS

TRT 55US

ESPECIFICACIÓN TÉCNICA



Kit for engine pre-warming · Kit de precalentamiento del motor



Earth moving style · Para movimiento de tierra

20.5 R5

Spare wheel · Rueda de repuesto

20.5 R5

Emergency engine stop · Parada de emergencia del motor

Spark arrestor on exhaust pipe muffler* · Parachispas en el silenciador del tubo de escape*

Anemometer · Anemómetro

Rear towing hook · Enganche de remolque

Wooden box for cab protection in sea shipment · Caja de madera para proteger la cabina para el transporte marítimo

Removable parts disassembling and put into wooden box tied to the crane ·

Desmontaje de las piezas desmontables y colocación en caja de madera fijada a la grúa

Disassembling of removable parts for sea shipment · Desmontaje de las piezas desmontables para el transporte marítimo

Anti-corrosive protective waxing for sea shipping · Aplicación de cera de protección para el transporte marítimo

Special customer paint one colour on the whole crane · 1 color de pintura especial en toda la grúa

Special customer paint one colour only on the upper or lower part of the crane ·

1 color de pintura especial sólo en parte superior o inferior de la grúa

Special customer paint two colours on the whole crane · 2 colores de pintura especial en toda la grúa

Special customer paint of all boom elements · Pintura especial en todas las secciones de la pluma

Special heavy painting suitable for corrosive environments · Pintura especial para ambientes corrosivos

* only for engine Stage IIIA Tier 3 · solo para motores Fase IIIA/Tier 3

Note: refer to your local dealer for a full list of options.

(1) Indicative value only for reference.

(2) Standard crane in travelling configuration – value calculated with nominal tire radius and max power delivered to the wheels.

Nota: consulte la lista completa de opciones en su distribuidor local.



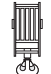
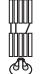
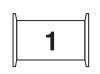
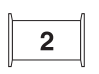


(1) Valor indicativo, sólo de referencia.

(2) Grúa estándar en configuración de marcha – valor calculado considerando el radio nominal del neumático y máxima potencia en las ruedas.

TECHNICAL SPECIFICATIONS

TRT 55US

ESPECIFICACIÓN TÉCNICA

								Standard	Optional
							Estándar	Opcional	
55 USt	5	10	•			•	•		
55 USt	5	10	•		•			•	
35 USt	4	8	•			•		•	
35 USt	4	8	•		•			•	
25 USt	3	6	•			•		•	
15 USt	2	4	•			•		•	
10 USt	1	2	•	•		•		•	
5 USt	0	1	•	•		•		•	

NOTES TO LIFTING CAPACITY

TRT 55US

NOTAS SOBRE LA CAPACIDAD DE ELEVACIÓN

Weight of hook blocks and slings is considered part of the load and must be subtracted from the capacity ratings. Consult operation manual for further details.

Note: Data published herein is intended as a guideline only and shall not be construed to warrant applicability for lifting purposes. For actual crane operation refer to the computer charts and the operating manual, both of which are supplied with the crane.

Los pesos de los ganchos y las eslingas se consideran parte de la carga y tienen que ser restados de las capacidades nominales. Consulte el manual de instrucciones para más detalles.

Nota: Los datos publicados se proporcionan a título informativo, por tanto, no se consideraran vinculantes a los efectos de la garantía de la capacidad de elevación.

Para operar la grúa deben cumplirse las tablas originales y el manual de instrucciones suministrados con la grúa.

A large rectangular area with a light gray background and horizontal white lines, intended for handwritten notes.

A large rectangular area with a light gray background and horizontal white lines, serving as a template for notes. The lines are evenly spaced and extend across the width of the page, providing a guide for writing.

TEREX ROUGH TERRAIN CRANES

Raimondi North America LLC

3309 Jaeckle Drive, Suite 120
Wilmington, NC 28403

Phone: +1-910-395-8523

Email: CraneSalesNA@terex.com

January 2026. Product specifications and prices are subject to change without notice or obligation. The photographs and/or drawings in this document are for illustrative purposes only. Refer to the appropriate Operator's Manual for instructions on the proper use of this equipment. Failure to follow the corresponding Operator's Manual when using our equipment or to otherwise act responsibly may result in serious injury or death. The only warranty applicable to our equipment is the standard written warranty applicable to the particular product and sale and Terex makes no other warranty, express or implied. Products and services listed may be trademarks, service marks or trade-names of Terex Corporation and/or its subsidiaries in the USA and other countries. All rights are reserved. Terex, the Terex Crown design and Works For You are trademarks of Terex Corporation or its subsidiaries.

Enero 2026. Las especificaciones y los precios de los productos están sujetos a cambios sin necesidad de previo aviso ni ninguna otra obligación. Las fotografías y/o dibujos de este documento tienen un fin meramente ilustrativo. Consulte el correspondiente manual de instrucciones del operario para obtener más información sobre el uso correcto de esta maquinaria. No respetar el manual del operario al utilizar la maquinaria o actuar de forma irresponsable puede provocar lesiones graves e incluso mortales. La única garantía aplicable a nuestra maquinaria es la garantía escrita estándar de cada producto y venta. Terex no amplía dicha garantía de forma expresa ni implícita. Los productos y servicios mencionados pueden ser marcas comerciales, marcas de servicio o nombres de marca de Terex Corporation o de alguna de sus filiales en Estados Unidos y otros países. Todos los derechos reservados. Terex, el diseño de la corona Terex y Works For You son marcas registradas de Terex Corporation o de sus filiales.



www.terex.com/rough-terrain-cranes

Brochure Reference: RT-DS-I-E/S-TRT55US-01/26



LEVEL UP