

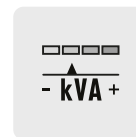
FLAT TOP TOWER CRANE

Specifications:

- ▶ Max jib length: 197ft
- ▶ Capacity at max length: 3,090 lbs
- ▶ Max capacity: 13,230 lbs



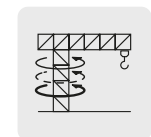
Power Plus



Power Match



Easy Setup



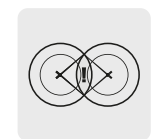
T-Torque



T-Link



Zoning



Anticollision

WORKS FOR YOU.™

KEY

Legenda · Zeichenerklärung · Légende · Leyenda · Legenda · Условные обозначения



Hoisting · Sollevamento · Heben · Levage · Elevación · Elevação · Подъем



Trolleying · Traslazione carrello · Katzfahren · Distribution · Distribución · Distribuição · Передвижение каретки



Slewing · Rotazione · Schwenken · Orientation · Orientació · Giro · Поворот



Travelling · Traslazione · Schienenfahren · Translation · Traslación · Móvel · Передвижение



Directive on noise level · Direttiva sul livello acustico · Richtlinie für den Schall-Leistungspegel · Directive sur le niveau acoustique · Directiva sobre el nivel acustico · Diretiva sobre nível de ruídos · Директива по уровню шума



Consult us · Consultateci · Auf Anfrage · Nous consulter · Consultarnos · Consulte-nos · Проконсультироваться с нами



Power requirements · Potenza totale richiesta · Geforderte Stromstärke · Puissance totale nécessaire · Potencia necesaria · Requisitos de energia · Требования по питанию



With Terex Power Match · Con Terex Power Match · Mit Terex Power Match · Avec Terex Power Match · Con Terex Power Match · Com Terex Power Match · с Terex Power Match



Power supply · Alimentazione · Stromversorgung · Alimentation · Alimentación · Fonte de alimentação · Питание



In service · In servizio · In Betrieb · En service · En servicio · Em serviço · При работе



Out of service · Fuori servizio · Außer Betrieb · Hors service · Fuera de servicio · Fora de serviço · В режиме простоя



Max. under hook height · Altezza max. sotto gancio · Höchste Hakenhöhe · Hauteur maxi. sous crochet · Maxima altura bajo gancho · Alt. máx. sob o gancho · Макс высота крюка



Without load, without ballast, max. jib and max. height · A vuoto, senza zavorra, braccio max., altezza max. · Ohne Last und Ballast, mit Maximalausleger und Maximalhöhe · A vide, sans lest, avec flèche et hauteur maximum · Sin carga, sin lastre, con pluma y altura máxima · Sem carga, sem lastro, lança máxima, altura máxima · Без груза, без балласта, на макс. Длине вспомогательной стрелы и макс. Высоте



Counterweight · Zavorra controbraccio · Gegengewicht · Lest de contre-flèche · Lastre de contra flecha · Contrapeso · Противовес

C25

EN 14439-C25 · EN 14439 - C25 · EN14439 - C25 · EN 14439 - C25 · EN 14439 - C25 · EN 14439 - C25 · EN14439 - C25

CONTENTS

CTT 132-6

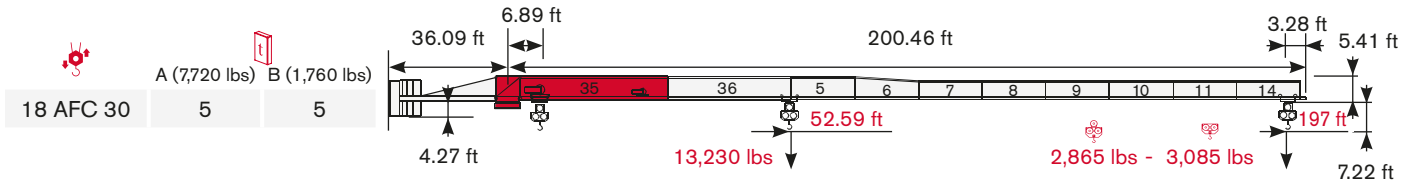
Indice · Inhalt · Contenu · Contenido · Sumário · Содержание

Page · Pagina · Seite · Page · Página · Página · Страница:

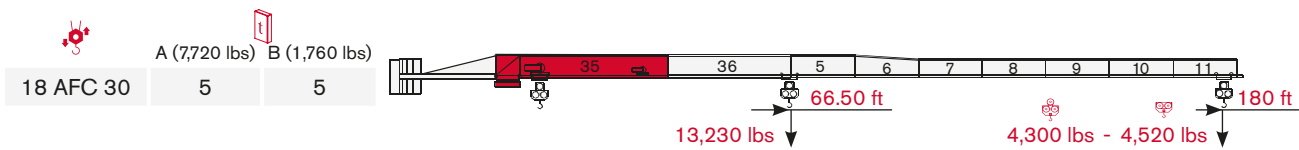
Load Diagram · Diagramma di portata · Lastkurven · Courbes de charges · Curvas de cargas · Diagrama de carga · Диаграмма грузоподъёмности	4
Tower · Torre · Turm · Tour · Torre · Torre · Башня	7
Mechanisms · Meccanismi · Antriebe · Mécanismes · Mecanismos · Mecanismo · Механизм	10
Transportation · Trasporto · Transport · Transport · Transporte · Transporte · Транспортировка	12

LOAD DIAGRAM

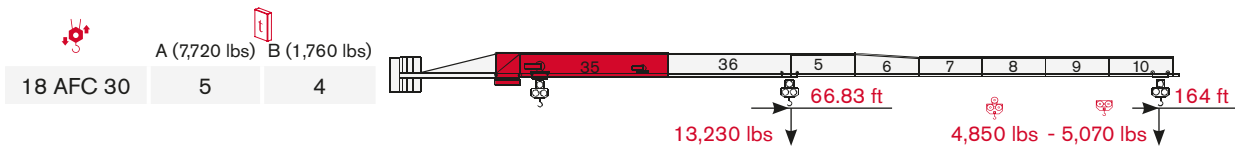
Diagramma di portata · Lastkurven · Courbes de charges · Curvas de cargas · Diagrama de carga · Диаграмма грузоподъёмности



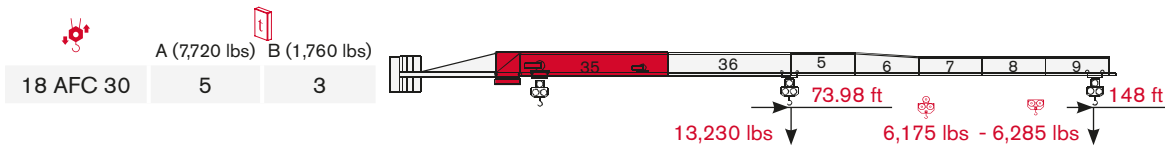
		33 ft	49 ft	66 ft	82 ft	98 ft	115 ft	131 ft	148 ft	164 ft	180 ft	197 ft
	6,615 lbs → 102.21 ft lbs	6,615	6,615	6,615	6,615	6,615	5,808	4,991	4,356	3,848	3,433	3,086
	6,615 lbs → 98.80 ft lbs	6,615	6,615	6,615	6,615	6,615	5,564	4,754	4,125	3,621	3,209	2,866
	13,230 lbs → 52.58 ft lbs	13,230	13,230	10,419	8,153	6,643	5,564	4,754	4,125	3,621	3,209	2,866




		33 ft	49 ft	66 ft	82 ft	98 ft	115 ft	131 ft	148 ft	164 ft	180 ft
	6,615 lbs → 128.94 ft lbs	6,615	6,615	6,615	6,615	6,615	6,615	6,485	5,684	5,044	4,519
	6,615 lbs → 124.93 ft lbs	6,615	6,615	6,615	6,615	6,615	6,615	6,253	5,457	4,820	4,299
	13,230 lbs → 66.49 ft lbs	13,230	13,230	13,230	10,550	8,640	7,276	6,253	5,457	4,820	4,299

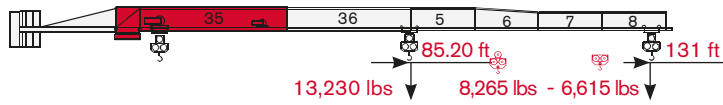


		33 ft	49 ft	66 ft	82 ft	98 ft	115 ft	131 ft	148 ft	164 ft
	6,615 lbs → 129.54 ft lbs	6,615	6,615	6,615	6,615	6,615	6,615	6,519	5,714	5,071
	6,615 lbs → 125.59 ft lbs	6,615	6,615	6,615	6,615	6,615	6,615	6,290	5,490	4,850
	13,230 lbs → 66.84 ft lbs	13,230	13,230	13,230	10,611	8,691	7,319	6,290	5,490	4,850




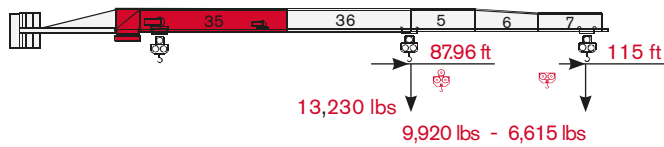
		33 ft	49 ft	66 ft	82 ft	98 ft	115 ft	131 ft	148 ft
	6,615 lbs → 140.98 ft lbs	6,615	6,615	6,615	6,615	6,615	6,615	6,615	6,283
	6,615 lbs → 138.99 ft lbs	6,615	6,615	6,615	6,615	6,615	6,615	6,615	6,173
	13,230 lbs → 73.97 ft lbs	13,230	13,230	13,230	11,840	9,715	8,197	7,058	6,173

	A (7,720 lbs)	B (1,760 lbs)
18 AFC 30	5	2




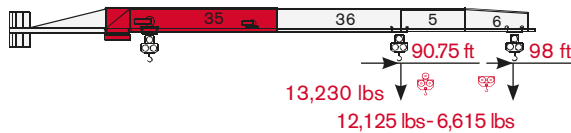
		33 ft	49 ft	66 ft	82 ft	98 ft	115 ft	131 ft					
	6,615 lbs → 131.23 ft	lbs	6,615	6,615	6,615	6,615	6,615	6,615					
	6,615 lbs → 131.23 ft	lbs	6,615	6,615	6,615	6,615	6,615	6,615					
	13,230 lbs → 85.19 ft	lbs	13,230	13,230	13,230	13,230	11,327	9,578	8,267				



	A (7,720 lbs)	B (1,760 lbs)
18 AFC 30	5	1



		33 ft	49 ft	66 ft	82 ft	98 ft	115 ft						
	6,615 lbs → 114.83 ft	lbs	6,615	6,615	6,615	6,615	6,615						
	6,615 lbs → 114.83 ft	lbs	6,615	6,615	6,615	6,615	6,615						
	13,230 lbs → 87.97 ft	lbs	13,230	13,230	13,230	13,230	11,726	9,921					

	A (7,720 lbs)	B (1,760 lbs)
18 AFC 30	5	0

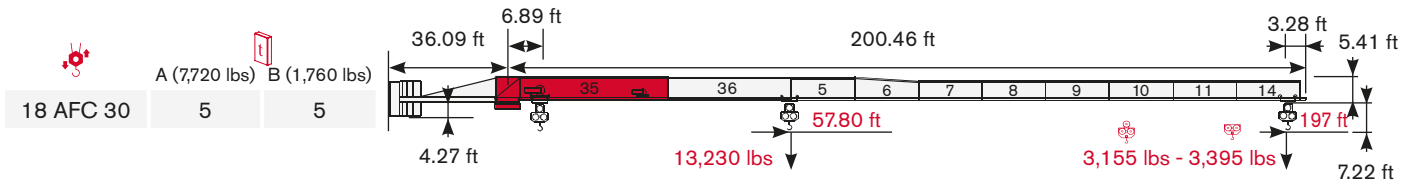


		33 ft	49 ft	66 ft	82 ft	98 ft							
	6,615 lbs → 98.43 ft	lbs	6,615	6,615	6,615	6,615							
	6,615 lbs → 98.43 ft	lbs	6,615	6,615	6,615	6,615							
	13,230 lbs → 90.75 ft	lbs	13,230	13,230	13,230	13,230	12,125						

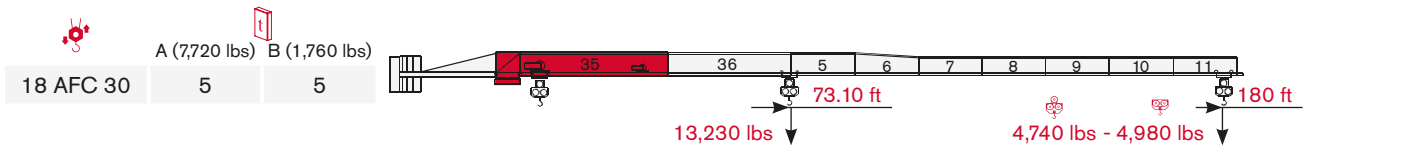
LOAD DIAGRAM

Diagramma di portata · Lastkurven · Courbes de charges · Curvas de cargas · Diagrama de carga · Диаграмма грузоподъёмности

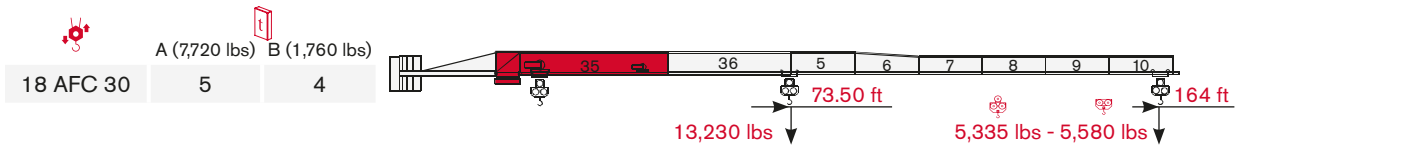
TEREX POWER PLUS



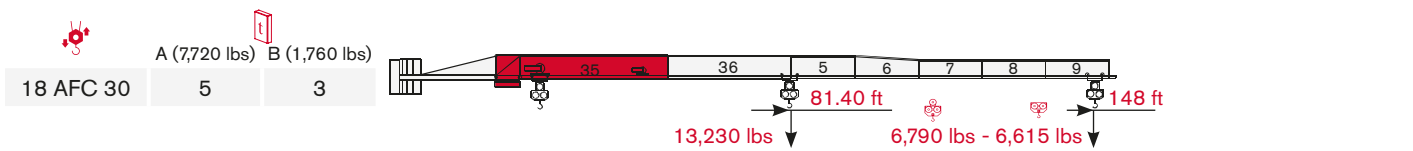
		33 ft	49 ft	66 ft	82 ft	98 ft	115 ft	131 ft	148 ft	164 ft	180 ft	197 ft	
	6,615 lbs → 112.43 ft lbs	6,615	6,615	6,615	6,615	6,615	6,461	5,563	4,864	4,306	3,848	3,395	T
	6,615 lbs → 108.68 ft lbs	6,615	6,615	6,615	6,615	6,615	6,211	5,321	4,628	4,074	3,621	3,153	P
	13,230 lbs → 57.84 ft lbs	13,230	13,230	11,552	9,059	7,398	6,211	5,321	4,628	4,074	3,621	3,153	P



		33 ft	49 ft	66 ft	82 ft	98 ft	115 ft	131 ft	148 ft	164 ft	180 ft	
	6,615 lbs → 141.83 ft lbs	6,615	6,615	6,615	6,615	6,615	6,615	6,615	6,325	5,620	4,971	T
	6,615 lbs → 137.43 ft lbs	6,615	6,615	6,615	6,615	6,615	6,615	6,615	6,093	5,393	4,729	P
	13,230 lbs → 73.14 ft lbs	13,230	13,230	13,230	11,697	9,595	8,095	6,969	6,093	5,393	4,729	P



		33 ft	49 ft	66 ft	82 ft	98 ft	115 ft	131 ft	148 ft	164 ft	
	6,615 lbs → 142.49 ft lbs	6,615	6,615	6,615	6,615	6,615	6,615	6,615	6,358	5,578	T
	6,615 lbs → 138.15 ft lbs	6,615	6,615	6,615	6,615	6,615	6,615	6,615	6,130	5,335	P
	13,230 lbs → 73.52 ft lbs	13,230	13,230	13,230	11,763	9,651	8,142	7,010	6,130	5,335	P



		33 ft	49 ft	66 ft	82 ft	98 ft	115 ft	131 ft	148 ft	
	6,615 lbs → 147.64 ft lbs	6,615	6,615	6,615	6,615	6,615	6,615	6,615	6,615	T
	6,615 lbs → 147.64 ft lbs	6,615	6,615	6,615	6,615	6,615	6,615	6,615	6,615	P
	13,230 lbs → 81.37 ft lbs	13,230	13,230	13,230	13,115	10,777	9,108	7,855	6,790	P

TOWER

CTT 132-6

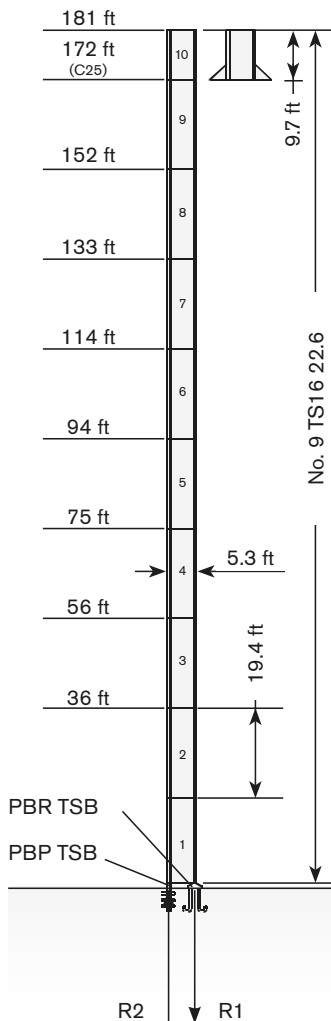
Torre · Turm · Tour · Torre · Torre · Башня

Standard Configurations · Installazioni Standard · Standardkonfiguration · Standard Implantations · Implantaciones Standard · Configuração padrão · Стандартная конфигурация крана

TS16

Tower: TS16 & Basement: R1

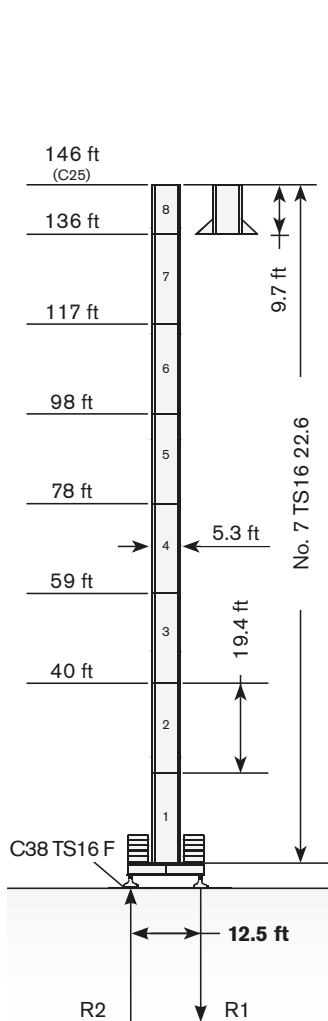
	●	◆
R1	-1515 kN	-1920 kN
R2	1200 kN	1622 kN
	355 kN	



	max. H (ft)	
	FEM 1001	FEM 1005 C25
98->131 ft	181	172
148->197 ft	172	162

Tower: TS16 & Basement: F1

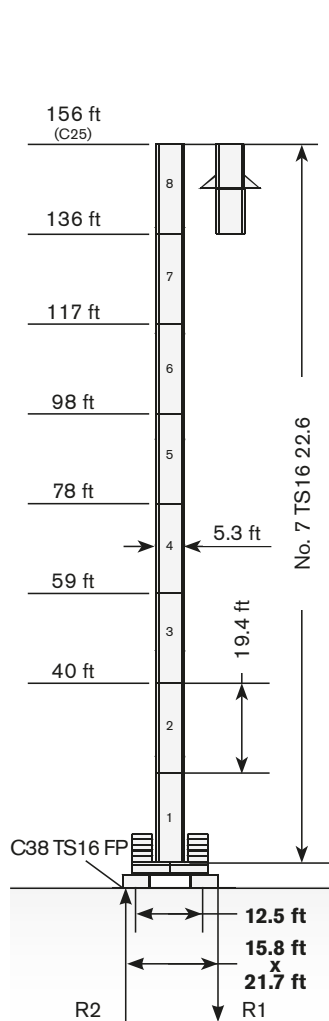
	●	◆
R1	-860 kN	-1005 kN
R2	-55 kN	0 kN
	395 kN	



	max. H (ft)	
	FEM 1001	FEM 1005 C25
98->131 ft	146	146
148->197 ft	146	146

Tower: TS16 & Basement: FP1

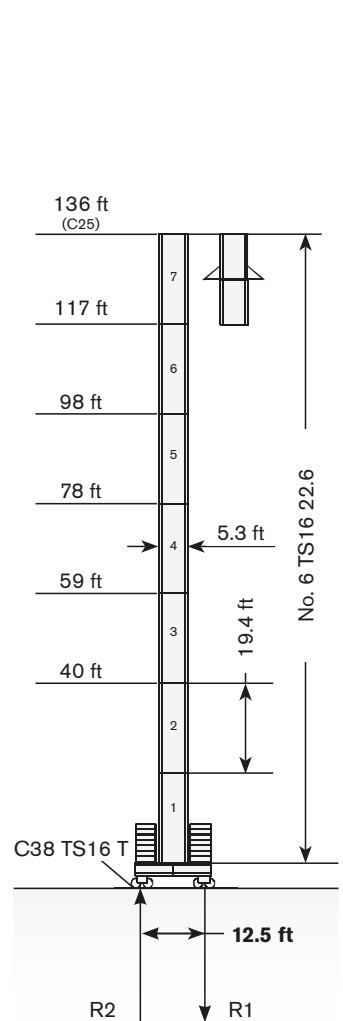
	●	◆
R1	-930 kN	-1165 kN
R2	-50 kN	0 kN
	405 kN	



	max. H (ft)	
	FEM 1001	FEM 1005 C25
98->131 ft	156	156
148->197 ft	156	156

Tower: TS16 & Basement: T1

	●	◆
R1	-900 kN	-860 kN
R2	0 kN	0 kN
	385 kN	



	max. H (ft)	
	FEM 1001	FEM 1005 C25
98->131 ft	136	136
148->197 ft	136	136

Max. under hook height · Altezza max. sotto gancio · Höchste Hakenhöhe · Hauteur maxi. sous crochet · Maxima altura bajo gancho · alt. máx. sob o gancho · макс высота крюка

Different heights and tower combinations are available; please consult us · Altezze diverse e combinazioni di torre sono disponibili; consultateci · Andere Höhen und Turmkombinationen auf Anfrage · Différentes hauteurs et combinaisons de tour sont disponibles; nous consulter · Hay diferentes alturas y combinaciones de torre disponibles. Consúltenos · Diferentes alturas e combinações de torres disponíveis; fale conosco · Возможны другие сочетания высоты и конфигурации башни; проконсультируйтесь с нами

Modular base chassis is also available; please consult us · E' anche disponibile il carro modulare; consultateci · Modulares Fundamentkreuz auf Anfrage · Châssis modifiable est disponible; nous consulter · La base modulare está disponible. Consúltenos · A base modular está disponível; fale conosco · модульная база доступна. проконсультируйтесь с нами

WORKS FOR YOU.

TOWER

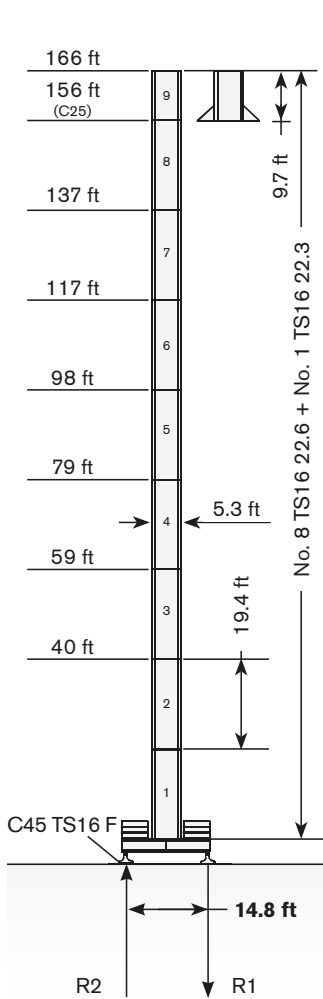
Torre · Turm · Tour · Torre · Torre · Башня

Standard Configurations · Installazioni Standard · Standardkonfiguration · Standard Implantations · Implantaciones Standard · Configuração padrão · Стандартная конфигурация крана

TS16

Tower: TS16 & Basement: F2

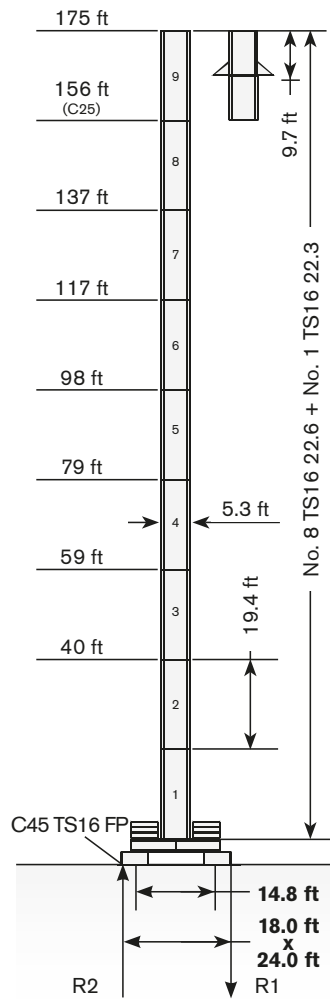
	●	◆
R1	-830 kN	-1025 kN
R2	-55 kN	0 kN
	435 kN	



→	max. H (ft)	
	FEM 1001	FEM 1005 C25
98->131 ft	166	156
148->197 ft	166	156

Tower: TS16 & Basement: FP2

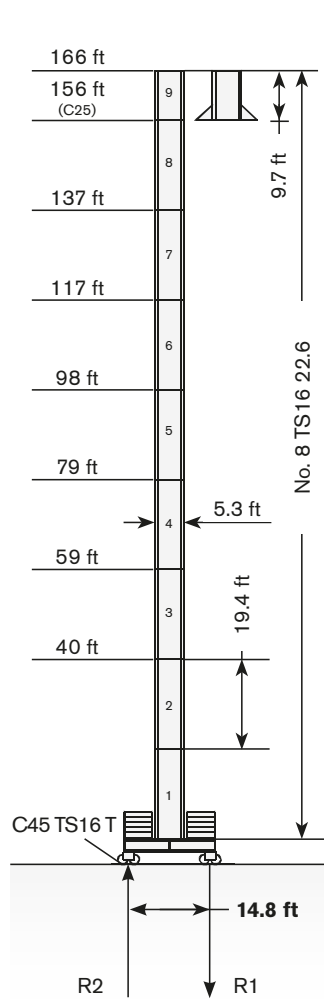
	●	◆
R1	-880 kN	-1025 kN
R2	-65 kN	0 kN
	425 kN	



→	max. H (ft)	
	FEM 1001	FEM 1005 C25
98->131 ft	175	156
148->197 ft	166	156

Tower: TS16 & Basement: T2

	●	◆
R1	-920 kN	-1025 kN
R2	0 kN	0 kN
	435 kN	



→	max. H (ft)	
	FEM 1001	FEM 1005 C25
98->131 ft	166	156
148->197 ft	166	156

TS16 22.3 TC tower section for Top Climbing ·

Prolunga TS16 22.3 TC sopraelevazione con gabbia di telescopaggio ·

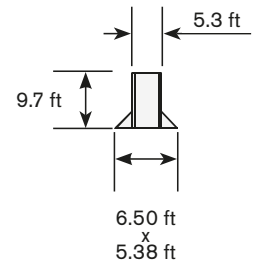
Turmelement TS16 22.3 TC für Turm-Erhöhung mit Kletterwerk ·

Pylône tour TS16 22.3 TC pour surélévation avec cage télescopique ·

Columna torre TS16 22.3 TC por sobreelevación con jaula ·

TS16 22.3 TC elemento de torre para telescopagem ·

S16 22.3 TC секция башни TC для унаращивания крана



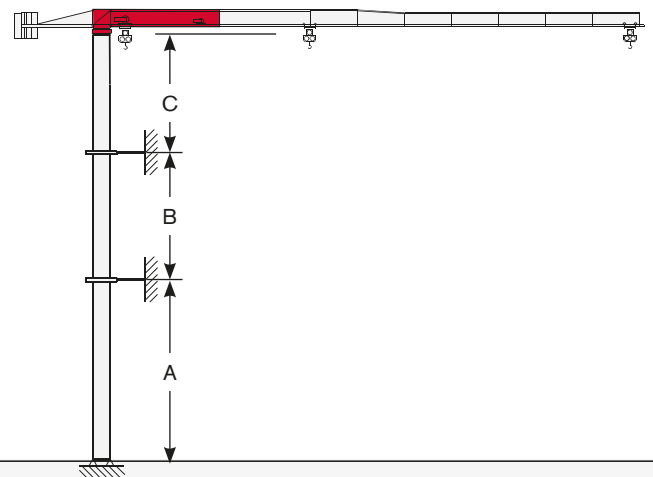
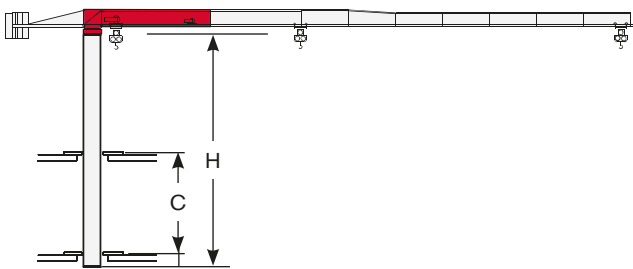
The available lengths for the TS tower sections are 38.7 ft, 19.4 ft, 9.7 ft. · Le prolunghe TS sono disponibili in lunghezza 38.7 ft, 19.4 ft, 9.7 ft. · Die Turmschüsse TS sind mit Längen 38.7 ft, 19.4 ft, 9.7 ft. verfügbar. · Les éléments de mât TS sont disponibles en longueur 38.7 ft, 19.4 ft, 9.7 ft. · Los tramos de torre TS son disponibles en las medidas de largo 38.7 ft, 19.4 ft, 9.7 ft. · Os comprimentos disponíveis para elementos de torre TS são: 38.7 ft, 19.4 ft, 9.7 ft. · Длина поставляемых секций башни TS - 38.7 ft, 19.4 ft, 9.7 ft.

Torre · Turm · Tour · Torre · Torre · Башня

Other configurations · Altre Installazioni · Aufstellmöglichkeiten · Autres Implantations · Otras Implantaciones · Outras configurações · Другие конфигурации

Bottom climbing crane · Gru climbing · Kletterkran im Gebäude ·
Télescopage sur dalles · Telescopage grúa trepadora · Guindaste
automontante interno · Самоподъемный кран

Crane tied to the structure · Gru ancorata · Geankerter Kran ·
Grue ancrée · Grúa anclada · Guindaste ancorado na estrutura ·
Кран, крепящийся к сооружению



Tower: TS16

Jib	C min/max (ft)	H min/max (ft)
95 - 128	36/43	97/135
144 - 194	36/43	97/126

Tower: TS16

Jib	A min/max (ft)	B min/max (ft)	C max (ft)
95 - 128	108/141	58/77	92
144 - 194	98/131	58/77	92







Different heights and tower combinations are available; please consult us · Altezze diverse e combinazioni di torre sono disponibili; consultateci · Andere Höhen und Turmkombinationen auf Anfrage · Différentes hauteurs et combinaisons de tour sont disponibles; nous consulter · Hay diferentes alturas y combinaciones de torre disponibles. Consulténos · Diferentes alturas e combinações de torres disponíveis; fale conosco · Возможны другие сочетания высоты и конфигурации башни; проконсультируйтесь с нами

MECHANISMS




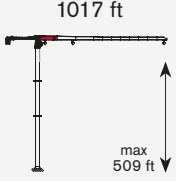

Meccanismi · Antriebe · Mécanismes · Mecanismos · Mecanismo · Механизм

Power supply · Alimentazione · Stromversorgung · Alimentation · Suministro eléctrico · Requisitos de energia · Требования по питанию

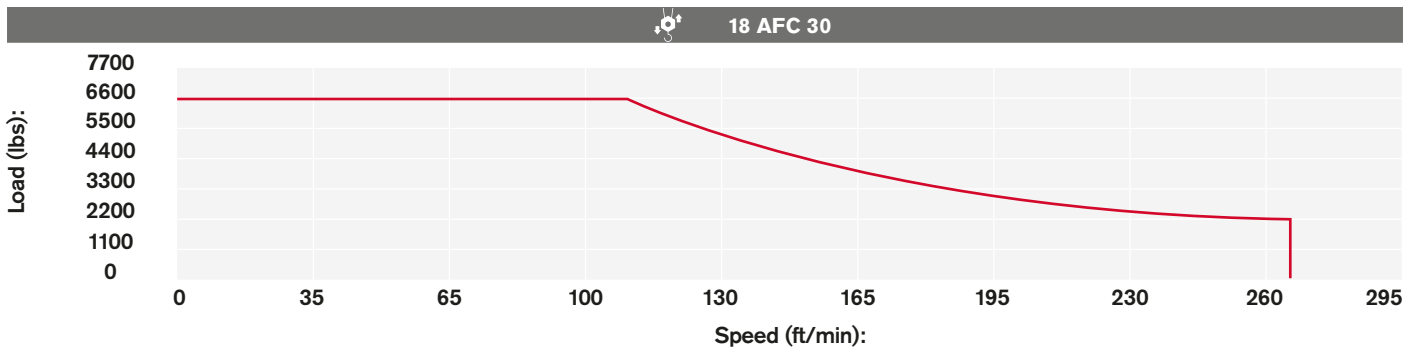
	18 AFC 30	 23* → 43 kVA	 400V - 50Hz / 460V - 60Hz	 2000/14/CE modificata
---	-----------	--	---	---

* - kVA+

Hoisting · Sollevamento · Heben · Levage · Elevación · Elevação · Подъем

			lbs	ft/min	kW	
	18 AFC 30		6,615	0 → 105	18	
			4,410	0 → 144		
			3,305	0 → 190		
			2,755	0 → 223		
			2,205	0 → 262		
			13,230	0 → 52		
			8,820	0 → 72		
			6,615	0 → 95		
			5,510	0 → 112		
			4,410	0 → 131		

Hoisting Speed · Velocità di Sollevamento · Heben Geschwindigkeit · Vitesse de Levage · Velocidad de Elevación · Velocidade de içamento · Скорость подъема



Additional Specifications · Altre movimentazioni · Weitere Leistungsdaten · Spécifications additionnelles · Otras prestaciones · Especificações adicionais · Дополнительные спецификации

	DVF 3 4 D8	0 → 20 → 100 → 230 ft/min	4 kW
	SVF 1 1 8	0,9 r.p.m. (50Hz)	7,5 kW
	TAD 2RP 2M3	0 → 80 ft/min (50Hz) 0 → 95 ft/min (60Hz)	2 x 3 kW
	TAD 2RG 4M3	0 → 80 ft/min (50Hz) 0 → 95 ft/min (60Hz)	4 x 3 kW
	i		

Tower height max.

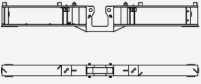
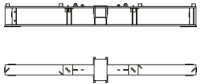
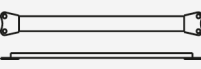
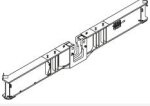
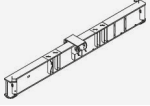
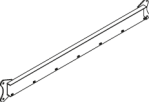
		T1	T2
	TAD 2RP 2M3	97.6 ft	117 ft
	TAD 2RG 4M3	> 97.6 ft	> 117 ft

TRANSPORTATION





Trasporto · Transport · Transport · Transporte · Transporte · Транспортировка

Packing list

Undercarriage

CTT 132-6	DESCRIPTION · DESCRIZIONE · BESCHREIBUNG · DESCRIPTION · DESCRIPCIÓN · DESCRIÇÃO · ОПИСАНИЕ	LENGTH · LUNGHEZZA · LÄNGE · LONGUEUR · LONGITUD · COMPRIMENTO · ДЛИНА	WIDTH · LARGHEZZA · BREITE · LARGEUR · ANCHURA · LARGURA · ШИРИНА	HEIGHT · ALTEZZA · HÖHE · HAUTEUR · ALTURA · ALTURA · ВЫСОТА	QUANTITY · QUANTITÀ · MENGE · QUANTITÉ · CANTIDAD · QUANTIDADE · КОЛИЧЕСТВО	WEIGHT · PESO · GEWICHT · POIDS · PESO · PESO · ВЕС
	"A" BEAM FOR C38 UNDERCARRIAGE TS16	19' 0"	1' 4"	2' 7"	1	4,520 lb
	"B" BEAM FOR C38 UNDERCARRIAGE TS16	19' 0"	2' 6"	2' 4"	1	4,520 lb
	CROSSBEAM FOR C38 UNDERCARRIAGE	12' 2"	0' 4"	1' 4"	2	418 lb
	"A" BEAM C45 UNDERCARRIAGE TS21-TS16	22' 4"	1' 4"	6' 7"	1	6,218 lb
	"B" BEAM C45 UNDERCARRIAGE TS21-TS16	22' 4"	2' 6"	2' 7"	1	5,777 lb
	CROSSBEAM FOR C45 UNDERCARRIAGE TS21-TS16	14' 5"	5"	1' 9"	2	507 lb

Tower

	TS16 22.3 TOWER SECTION	5' 3"	5' 3"	9' 9"	1	2,679 lb*
	TS16 22.6 TOWER SECTION	5' 3"	5' 3"	19' 5"	1	4,982 lb*
	TS16 22.12	5' 3"	5' 3"	38' 10"	1	9,700 lb
	CTT 121/A TS16 TOP CLIMBING UNIT TOWER SECTION MOUNT	8' 2"	6' 7"	9' 10"	1	4,174 lb*

* Inclusive of ladder, ladder support and protection, platform

TEREX TOWER CRANES

Gru Comedil Srl

Via delle Innovazioni, 17
33074 Fontanafredda (PN)
Italy
Ph: +39 0434 989111
Email: mktg.cranes@terex.com

September 2022. Product specifications and prices are subject to change without notice or obligation. The photographs and/or drawings in this document are for illustrative purposes only. Refer to the appropriate Operator's Manual for instructions on the proper use of this equipment. Failure to follow the corresponding Operator's Manual when using our equipment or to otherwise act responsibly may result in serious injury or death. The only warranty applicable to our equipment is the standard written warranty applicable to the particular product and sale and Terex makes no other warranty, express or implied. Products and services listed may be trademarks, service marks or trade-names of Terex Corporation and/or its subsidiaries in the USA and other countries. All rights are reserved. Terex, the Terex Crown design and Works For You are trademarks of Terex Corporation or its subsidiaries.

Settembre 2022. Specifiche e prezzi dei prodotti sono soggetti a modifica senza preavviso o altro obbligo. Le fotografie e i disegni in questo documento hanno esclusivamente scopo illustrativo. Consulta il Manuale dell'operatore pertinente per trovare istruzioni per l'utilizzo corretto di questo macchinario. La mancata osservanza delle istruzioni contenute nel relativo Manuale dell'operatore durante l'uso del macchinario e altri comportamenti irresponsabili possono provocare gravi lesioni, anche mortali. L'unica garanzia applicabile ai nostri macchinari è la garanzia scritta standard applicabile al particolare prodotto e alla particolare vendita e Terex è esonerata dal fornire qualsiasi altra garanzia, esplicita o implicita. I prodotti e servizi elencati possono essere dei marchi di fabbrica, marchi di servizio o nomi commerciali di Terex Corporation, e/o delle rispettive società affiliate negli Stati Uniti d'America e in molte altre nazioni. Tutti i diritti riservati. Terex, il marchio Terex Crown e Works for You sono marchi di proprietà di Terex Corporation o delle sue società affiliate.

September 2022. Irrtum und Änderungen der Produktspezifikationen vorbehalten. Die in diesem Dokument enthaltenen Fotos und/oder Zeichnungen dienen rein anschaulichen Zwecken. Für den sachgemäßen Gebrauch der Maschinen ist das entsprechende Bedienerhandbuch heranzuziehen. Unsachgemäßer Umgang mit bzw. unsachgemäßer Einsatz unserer Maschinen kann zu schweren gesundheitlichen Schäden bis hin zum Tod führen. Für unsere Produkte wird ausschließlich die entsprechende, schriftlich niedergelegte Standardgarantie gewährt. Terex leistet keinerlei darüber hinausgehende Garantie, weder ausdrücklich noch stillschweigend. Die genannten Produkte und Dienstleistungen sind in den USA und anderen Ländern ggf. Marken, Dienstleistungsmarken oder Handelsnamen der Terex Corporation und/oder ihrer Tochtergesellschaften. Alle Rechte vorbehalten. Terex, das Terex Kronenlogo und Works For You sind Marken in Eigentum der Terex Corporation bzw. ihrer Tochtergesellschaften.

Septembre 2022. Les caractéristiques et prix des produits peuvent faire l'objet de modifications sans notification préalable. Les photographies ou dessins présentés dans ce document servent uniquement à des fins d'illustration. Pour connaître les instructions relatives à l'utilisation correcte de cet équipement, veuillez vous référer au manuel de l'utilisateur correspondant. Le non-respect du manuel d'utilisateur correspondant lors de l'utilisation de notre équipement ou des actes irresponsables risquent de provoquer de graves blessures, voire un décès. La seule garantie applicable à nos équipements est la garantie écrite standard applicable au produit et à la vente spécifiques. Terex ne délivre aucune autre garantie, expresse ou implicite. Les produits et les services mentionnés peuvent être des marques, des marques de service ou des appellations commerciales de Terex Corporation et/ou de ses filiales aux États-Unis et dans d'autres pays. Tous droits réservés. Terex, le design Terex Crown et Works For You sont des marques déposées de Terex Corporation ou de ses filiales.

Septiembre 2022. Las especificaciones y los precios de los productos están sujetos a cambios sin necesidad de previo aviso ni ninguna otra obligación. Las fotografías y/o dibujos de este documento tienen un fin meramente ilustrativo. Consulte el correspondiente manual de instrucciones del operario para obtener más información sobre el uso correcto de esta maquinaria. No respetar el manual del operario al utilizar la maquinaria o actuar de forma irresponsable puede provocar lesiones graves e incluso mortales. La única garantía aplicable a nuestra maquinaria es la garantía escrita estándar de cada producto y venta. Terex no amplía dicha garantía de forma expresa ni implícita. Los productos y servicios mencionados pueden ser marcas comerciales, marcas de servicio o nombres de marca de Terex Corporation o de alguna de sus filiales en Estados Unidos y otros países. Todos los derechos reservados. Terex, el diseño de la corona Terex y Works For You son marcas registradas de Terex Corporation o de sus filiales.

Setembro 2022. Especificações e preços dos produtos sujeitos a alteração sem aviso prévio ou obrigações. As fotografias e/ou desenhos neste documento são apenas para fins ilustrativos. Consulte o respectivo Manual do Operador para instruções sobre o uso correto deste equipamento. Deixar de acompanhar o respectivo Manual do Operador ao usar o nosso equipamento ou, por qualquer outra forma, deixar de agir de maneira responsável pode resultar em lesões corporais graves ou a morte. A única garantia aplicável ao nosso equipamento é a garantia padrão por escrito correspondente ao produto específico vendido. A Terex não dá outras garantias, expressas ou implícitas. Os produtos e serviços listados podem ser marcas comerciais, marcas de serviço ou nomes-fantasia da Terex Corporation e/ou suas subsidiárias nos EUA e em outros países. Todos os direitos reservados. Terex, o desenho da Coroa Terex e a expressão Works For You são marcas comerciais da Terex Corporation ou suas subsidiárias.

Сентябрь 2022 г. года Технические характеристики и цены могут изменяться без предварительного уведомления и без каких-либо обязательств для производителя. Фотографии и (или) чертежи в настоящем документе служат только в качестве иллюстраций. Инструкции по надлежащей эксплуатации данного оборудования см. в соответствующем руководстве для оператора. Невыполнение указаний соответствующих руководств для оператора при эксплуатации оборудования или другие безответственные действия могут повлечь серьезные травмы или смерть. Единственной гарантией, действующей в отношении нашего оборудования, является стандартная форма письменной гарантии на данный тип оборудования и на условия его продажи. Terex не дает никаких других гарантий: ни ясно выраженных, ни подразумеваемых. Перечисленные продукты и услуги могут быть торговыми марками, знаками обслуживания или торговыми наименованиями Terex Corporation и / или ее дочерних компаний в США и других странах. Все права защищены. Terex, изображение короны Terex и Works for You являются торговыми марками, принадлежащими корпорации Terex или ее дочерним компаниям.



www.terex.com/tower-cranes

Brochure Reference: TC-DS-I-E//G/F/S/P/R-CTT132-6-09/22



WORKS FOR YOU.™