

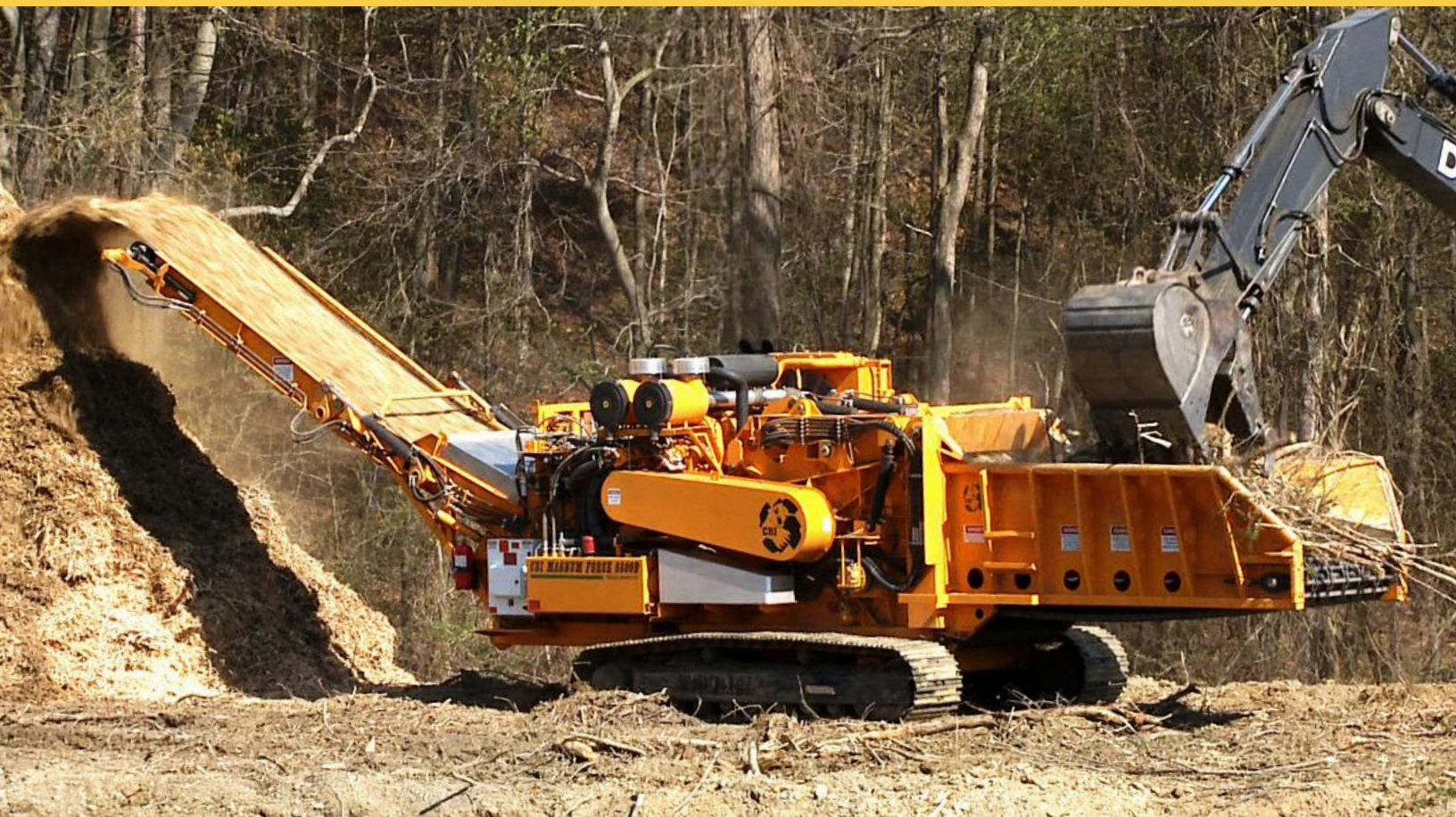


A TEREX BRAND

PRODUCT SPECIFICATION

6800BT

HORIZONTAL
GRINDER



WHOLE TREES • STORM DEBRIS • SLASH • STUMPS • REGRIND



KEY FEATURES...

www.cbi-inc.com

The CBI Magnum Force 6800BT is specifically designed for land clearing companies, mulch manufacturers, and yard waste processors who demand high-volume throughput and maximum reliability. It is capable of processing land clearing debris, pallets, clean industrial waste, stumps and logs as quickly as it can be loaded. It's well suited to produce highly-marketable mulch through its regrinding capability.

The grinding chamber features a "clam shell" opening designed for quick screen swaps and tip changes. This design provides full access and a direct line to lift and remove screens. The push of a single button retracts the two main lock pins, and a second button activates two hydraulic cylinders that lift the entire upper section to a service-friendly vertical position. The hog chamber is a heavy-duty reinforced housing with 100% continuous welds, providing maximum corrosion resistance, and the ultimate rigidity and strength.

Bolt-in, replaceable Hardox 450 wear liners fully protect the inside of the hog box. The 40" x 60" long upturn rotor has a forged, high-strength rotor core with 24 weld-on hammers that are protected by replaceable tip mounting faces arranged in a patented offset helix pattern. The pattern cuts the full width of the rotor in both directions to increase throughput and promote even wear.

The feed system features a 16'L X 60"W feed conveyor with high troughing sides facilitating continuous feed. The open-ended design and large capacity simplifies feeding full-length materials and accommodates large material surges.



"We bought our first CBI grinder back in 1998 and the one sitting behind me is the seventh one we've had. If I didn't like what I had, I wouldn't be standing here. I've had a lot of different manufacturers chase us to try their product."

- Chris Johnson, Vice President of KC Johnson & Sons

SCREEN CHANGE IN MINUTES



Upper feed roller; high-torque Poclain hydraulic motor built into roller.

Large capacity feed hopper easily handles full-length trees or large material surges with no problem.

1" thick AR 450 replaceable side liners.

Split hog box for ease of maintenance and screen changes.

Caterpillar C-27, 1050 HP diesel engine (Tier 4 final available).

60" wide cleated discharge belt provides unrestricted discharge of ground product.

Ready to accept optional discharge overband magnet.

Heavy-duty roller bearings.

Metal Detection System to protect machine from tramp metal.

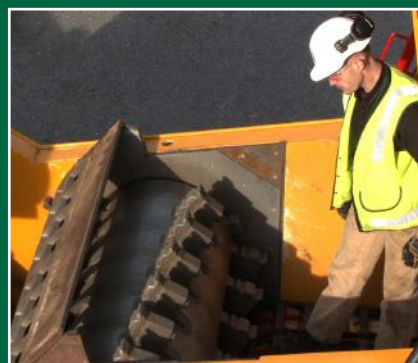
60" x 60" shuttle conveyor allows screened-out material to be diverted from the main discharge.

700mm triple grouser tracks with 2-speed motors for high-torque and speed.

High ground clearance.

AR 450 construction.

HIGH STRENGTH ROTORS FOR HIGH PRODUCTION



The 40" diameter x 60" wide upturn rotor has a forged, thick, high-strength rotor core with 24 weld-on hammers protected by replaceable tip mounting faces arranged in a patented offset helix pattern that cuts the full width of the rotor. This design drastically increases throughput over the conventional pinned rotor design used by our competitors. CBI's unique bolt-on reversible tips grind more material for less cost than any other tooth style in the world. Our Replace-A-Face™ hammer system allows the end user to swap out the face independent of the rest of the hammer for quick, easy and inexpensive repairs.

IQAN electric, hydraulic controls



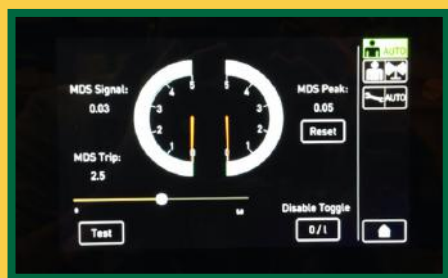
Hog box opens in seconds



Various hammer inserts



METAL DETECTION SYSTEM



A problem for any industrial grinder has to do with tramp metal entering the hog box and causing significant damage, which leads to downtime. The Metal Detection System™ (MDS) engages within milliseconds whenever the grinder's rotor makes contact with tramp metal. The rotor is monitored by an adjustable electronic sensor to alert

the control system when tramp metal is detected. It will automatically stop the rotor, raise the top feed roller and reverse the infeed to allow the operator to find the tramp metal. As a second line of defense against tramp metal, CBI grinders also feature shear pins to protect the grate frame, rotor and anvil.

TRANSPORT DIMENSIONS

Width: 11'-1" (3,378mm)
Height: 12'-0" (3,657mm)
Length: 40'-4" (12,293mm)
Weight: 85,000 - 88,000 lbs. (approx.)

DISCHARGE CONVEYOR

Width: 60" (1,524mm)
Length: 35' (10,668mm)
Height: 15'-10" (4,826mm)
Discharge belt includes magnetic head pulley and chute

INFEED

6 strands heavy-duty drag chain
accepts 40" material
Top Feed Roll: 40"D x 60"W
Width: 60" (1,066mm)
Length: 17'-0" (5,181mm)

ENGINE/DRIVE

Caterpillar C27; 1050 HP (787 kW)
PT Tech HPT015 hydraulic clutch
12 groove, 8-V section Arimid belt with guarding

CONTROLS

Parker IQAN™
Remote control operated

HYDRAULICS

Hydrostatic, closed loop
Hydraulic capacity 95 gallons (359

FAN

Reversing pitch radiator fan that
reverses airflow automatically

FUEL TANK

450 gallons (1,703 L)

ELECTRICAL

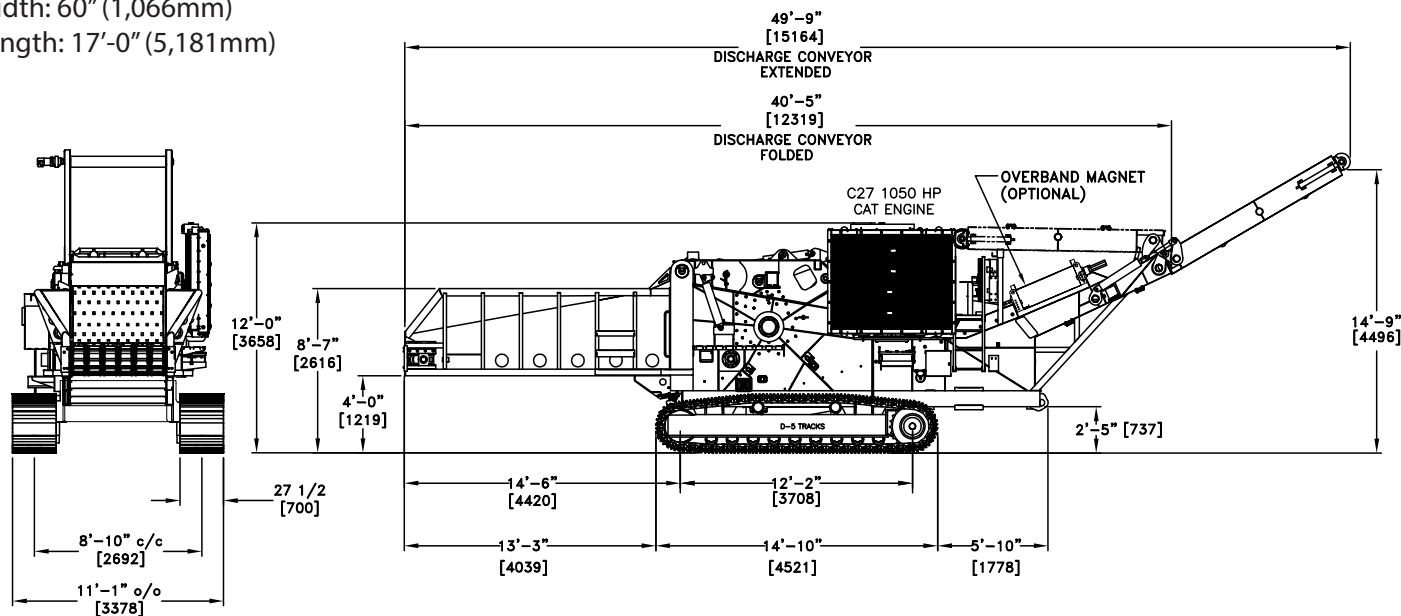
Variable speed system

TRACKS

700mm triple grouser

ROTOR

Shaft: 6" (152mm)
Width: 60" (1,524mm)
Diameter: 40" (1,016mm)
RPMs: 1440



Continental Biomass Industries

World's best stationary and portable material recovery systems.
22 Whittier Street, Newton, NH, 03858
Phone: (603) 382-0556 Fax: (603) 382-0557
Web: cbi-inc.com Email: info@cbi-inc.com

Distributed by: