



A TEREX BRAND

# PRODUCT

# OVERVIEW







## ABOUT US

Since 1988, CBI machines have been purpose-built to outproduce, outperform, and outlast anything in the market. Diverging from the pack of sorely inadequate wood grinders, CBI completely reimagined the value curve by producing the ultimate workhorses for unmatched production. End-users no longer have to settle for costly breakdowns and maintenance. Through the years, CBI's superior and long-lasting equipment has created the most value for owners who are serious about growing their business.

CBI's tradition of quality runs through complete lines of horizontal grinders, industrial wood chippers, flail debarkers, screens, stacking conveyors, stationary systems, and attachments for biomass recovery, composting, forestry, and wood-waste processing. Designed to maximize production and minimize downtime, CBI machines reduce a customer's total cost of ownership and have raised expectations of the entire industry. After decades of relentless improvement to the best machines on the market, it's no secret why CBI customers find success.

In April of 2015, Terex Materials Processing, a business segment of Terex Corporation (NYSE: TEX) and CBI announced the acquisition of the assets of CBI by Terex. This marked a significant expansion of the Terex Materials Processing product line. Terex Materials Processing has served the wood, biomass, and recycling industries since 2011. CBI's premium products are increasingly available throughout the world through Terex's advanced distribution network. The materials in this Dealer Success Kit provide a basic framework to help us support your dealership's goals in the coming year.

## OUTPRODUCE.OUTPERFORM.OUTLAST.

### Designed for the highest production and lowest total cost of ownership.

CBI started with the design of the CBI Grizzly Mill® with its patented and extremely rugged offset-helix rotor. The rotor uses kinetic energy in order to consume less power while aggressively outperforming anything on the market in terms of throughput. This technology became the basis for product lines like Grizzly Mill® wood waste hogs, Magnum Force® horizontal grinders, and Magnum Force® chippers. From this technology, CBI grew into one of the premiere wood grinder and wood chipper manufacturers in the United States and around the world.



Largest production rates



Fast and easy maintenance



Best fuel economy



Unmatched durability



Lowest cost per ton



Highest resale value



Lowest maintenance costs



Greatest versatility



# MARKET SEGMENTS

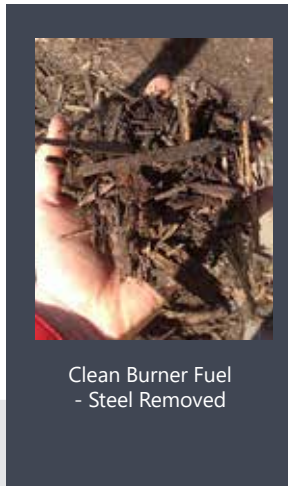
Extreme productivity, niche capabilities, and unequalled flexibility make CBI equipment ideal for many applications.



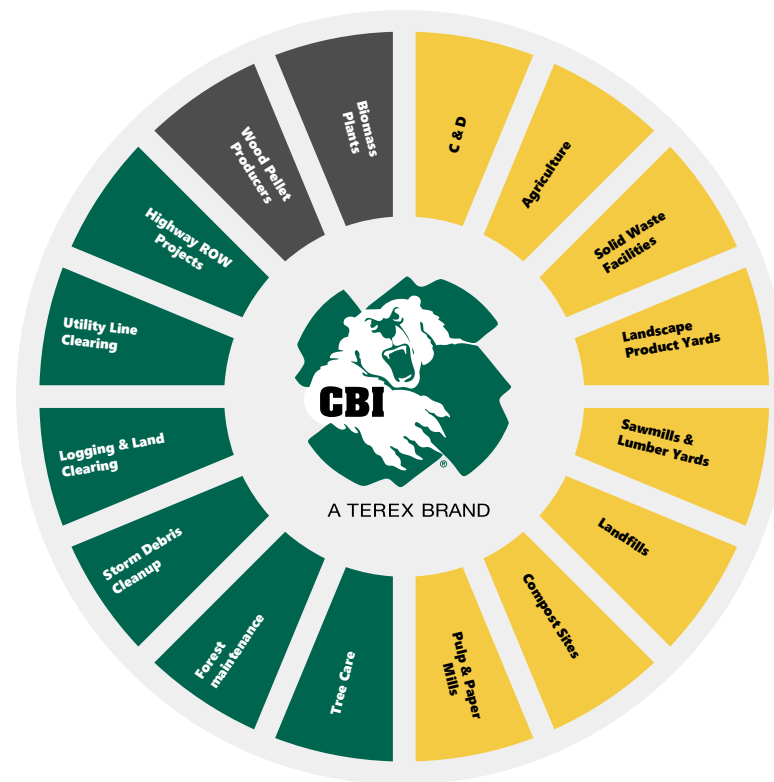
Steel Contaminated Railroad Ties



6400CT Horizontal Grinder



Clean Burner Fuel - Steel Removed



- Recycling
- Forestry
- Energy



# PRODUCT LINEUP

## DRUM CHIPPERS



### ■ ChipMax 364T

Engineered with a sloped infeed for easy feeding of full-length trees and an end-load chute with prioritized geometry. With two 48" x 36" rotor options, it can produce high-quality microchips and fuel chips. Engine options range from 550HP to 770HP, featuring CAT and Scania engines. The total weight is 45,000 lbs.



### ■ ChipMax 364VR

Designed to be mounted on a truck or trailer, allowing it to rotate 360 degrees. This setup provides maximum flexibility for operating in tight spaces. With two 48" x 36" rotor options, high-quality microchips and fuel chips can be produced. Engine options range from 550HP to 770HP, featuring CAT and Scania engines. The total weight is 40,000 lbs.



### ■ ChipMax 364VT

The 364VT offers the best of both worlds with tracks and a vertical loading chute for versatile performance. With two 48" x 36" rotor options, it produces high-quality microchips and fuel chips. Available in 550HP-770HP versions, featuring CAT and Scania engines, the 364VT weighs 45,000 lbs.



### ■ ChipMax 364P

The discharge chute rotates 290 degrees, allowing chips to be distributed in multiple areas and reducing the need for truck relocation. Designed for truck or trailer mounting. Weighing between 42,500 and 48,000lbs, it features a CAT C-18 engine with 765 HP and a 40" D x 48" W rotor.



### ■ ChipMax 484BP

Featuring two rotor options, you can produce high quality fuel chips custom sized from 3/4" to 1 1/4" or "microchips" from 1/8" to 1/2" for small wood fired boilers and the pellet Mill industry. 55,000 lbs., CAT C-18 engine; 765 HP, 40" D x 48" W rotor.



### ■ ChipMax 484BT

Engineered to provide a compact but highly productive chipper that can be configured to top or end load. Like the 484BP, the 484BT features two chipping rotor options. 56,000 lbs, CAT C-18 765 HP, 40"D x 48" W rotor.



### ■ ChipMax 484VT

Vertical discharge chute rotates 290 degrees for top loading of trailers and broadcast spreading of wood chips. 55,500 - 65,000 lbs., CAT C-18 engine; 765 HP, 40" D x 48" W rotor.



### ■ ChipMax 484VR

Discharge chute rotates 290-degrees to distribute chips in multiple areas, which minimizes truck relocation. Designed to be truck or trailer mounted, the hog chamber rotates 360- degrees for versatility of material loading. 42,500-48,000lbs, CAT C-18 engine; 765 HP, 40" D x 48" W rotor

## UPSWING GRINDERS



### ■ 6800CT

Designed for land clearing companies and yard waste processors demanding high volume throughput and reliability. 85,000 lbs., CAT C27; 1050hp engine (Option – CAT C32; 1125hp or 1200hp engine), 40" D x 60" W rotor.



### ■ 5900T

The CBI 5900T blends features from the 6800 and 5800, with a 60" wide infeed rotor that improves material flow. Powered by a 755 HP CAT C18 engine and weighing 80,000-86,000 lbs., it has an 8'6" transport width and redesigned dolly system for mobility.

## DOWNSWING GRINDERS



### ■ 5400BT

Processes an exceptionally wide variety of materials and generates the products that your clients demand—all with a single machine. 70,000-76,000lbs, CAT C18 engine; 765HP, 40"D x 48W rotor



### ■ 6400BT

Owners can transform this whole tree grinder/chipper into a machine built for grinding contaminated demolition debris just by swapping the rotor and screens. 83,000 - 90,000 lbs, CAT C27; 1050hp engine (Option CAT C32; 1200hp engine), 40" D x 60" W rotor.

## FLAIL DEBARKERS & DISC CHIPPERS



### ■ Magnum Force 604

Engineered to be the industry's most rugged and productive delimbbed/debarked, capable of processing logs up to 24" in diameter. 98,000 lbs., CAT C-18 engine; 600 HP, 40" D x 60" W flail drum.



### ■ Magnum Force 604NL

The 604NL four-roll flail design guarantees maximum debarking action to assure owners earn a timely ROI through a quality product 84,000 lbs., C-18 engine: 600 HP CAT, 40"D x 60"W flail drum.



### ■ Magnum Force 754

Capable of producing high-quality wood chips from 3/8" 1" at up to 200 tons per hour. 94,500 lbs., CAT C-27 engine; 1050 HP, 75"D 4 knife chipper disc with babbited or Key Knife system.



### ■ Magnum Force 7544 Combo

The 7544 is the ideal machine for the pulp and paper industry and others looking for maximum debarking and high production of quality uniform wood chips. 108,000 lbs, CAT C 32 engine; 1200 HP, 75" 4 knife chipper disc with babbited or Key Knife system, three roll flail design.

## ATTACHMENTS



### ■ Quick-Coupling Stump Shear

The CBI Quick-Coupling Stump Shear is excavator-mounted and performs many separate tasks. This shear is designed to fit on 40,000 - 100,000 pound class excavator and makes swapping attachments quick and easy adding to machine versatility.



### ■ Direct Pin Stump Shear

The CBI Stump Shear grubs, pulls, shears, backfills, and loads stumps and logs at a rate of 50+ tons/hour. Direct pin models available, designed to fit 40,000 - 100,000 pound class excavators with an auxiliary hydraulic line for the additional piston that powers the cutting knife.



### ■ RR30 Root Rake and Thumb

It grubs, pulls, backfills, rakes and loads to make "hog feed" out of dirt contaminated debris. The CBI Root Rake is built with the same rugged durability you have come to expect from CBI.



### ■ Log & Stump Screw

An attachment for splitting over-sized butt logs, pole wood, tree service block wood and stumps into a more manageable size. The XP and XLP fit virtually any machine with auxiliary hydraulics.



### ■ Steel Drum

Sixteen or twenty 6"x 8" striker plates held in place by two 1-1/4" bolts, designed for contaminated demolition debris, railroad ties and MSW.



### ■ Forged Drum

3" thick rotor with twenty or twenty-four weld on Replace-A-Face™ hammers with reversible tips for forestry debris and mulch manufacturing.



### ■ 2-Pocket Chipper

Two rows of knives for average chip lengths of 3/4" to 1-1/4" to produce fuel chips from stem wood.



### ■ 4-Pocket Chipper

## CONVEYORS



### ■ TC50

Belt Width: 36"  
Conveyor Length: 49'-1"  
Max Discharge Height: 22'-9"



### ■ TC50 Organics

Belt Width: 48"  
Conveyor Length: 74'-2"  
Max Discharge Height: 32'-10"



### ■ TC60

Belt Width: 36"  
Conveyor Length: 58'  
Max Discharge Height: 26'-9"



### ■ TC60R

Belt Width: 36"  
Conveyor Length: 58'-2"  
Max Discharge Height: 27'-8"



### ■ TC65 Conveyor

Belt Width: 42"  
Conveyor Length: 65'7"  
Max Discharge Height: 32'10"



### ■ TC80 Conveyor

Belt Width: 42"  
Conveyor Length: 77'  
Max Discharge Height: 34'6"



### ■ TC80 Organics

Belt Width: 42"  
Conveyor Length: 77'  
Max Discharge Height: 34'6"



### ■ TC 100 Conveyor

Belt Width: 42"  
Conveyor Length: 98'5"  
Max Discharge Height: 46'11"

## CONVEYORS



### ■ LLF 75 Low Level Hopper Feeder

Belt Width: 48"  
Conveyor Length: 74'2"  
Max Discharge Height: 32'2"



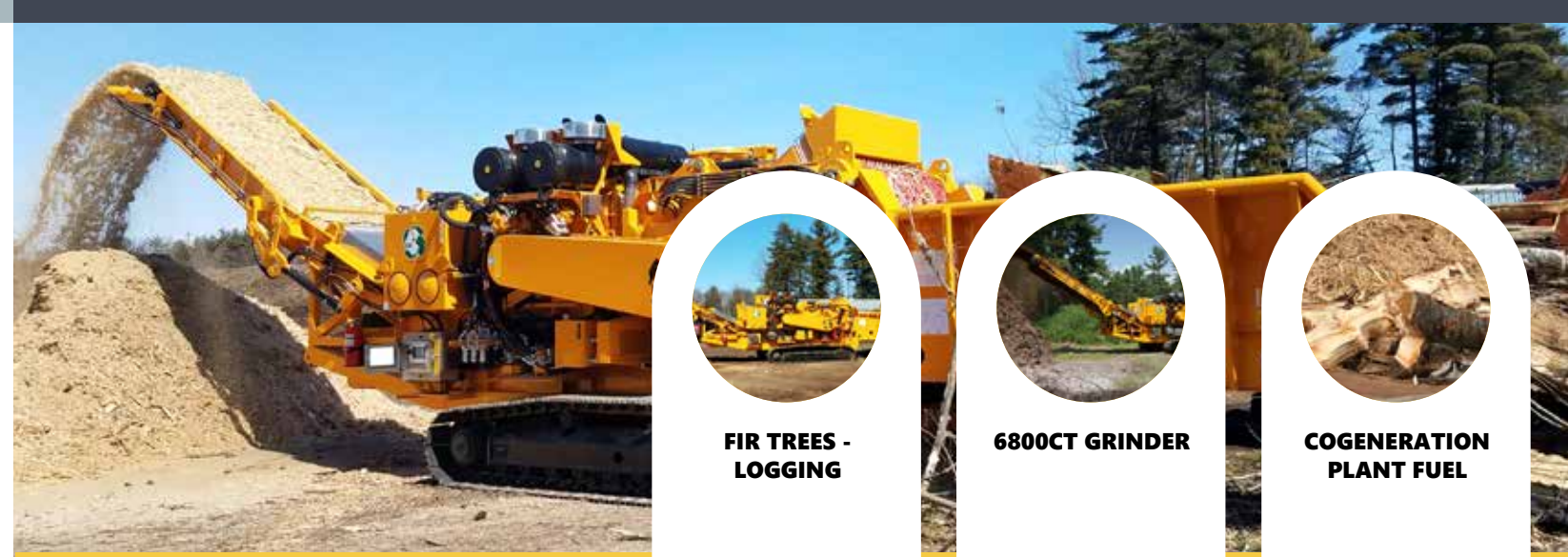
### ■ HLF 75 High Level Hopper Feeder

Belt Width: 48"  
Conveyor Length: 74'2"  
Max Discharge Height: 32'2"



### ■ TC 75R Radial Stacking Conveyor

Belt Width: 42"  
Conveyor Length: 75'2"  
Max Discharge Height: 35'10"



### FIR TREES - LOGGING

Operation is paid to grind piles of fir for a logging project. Piles range from whole trees to slash, brush, and branches.



### 6800CT GRINDER

CBI's 6800CT Horizontal Grinder is tracked to an optimum position and configured for high volume production to top load trucks.



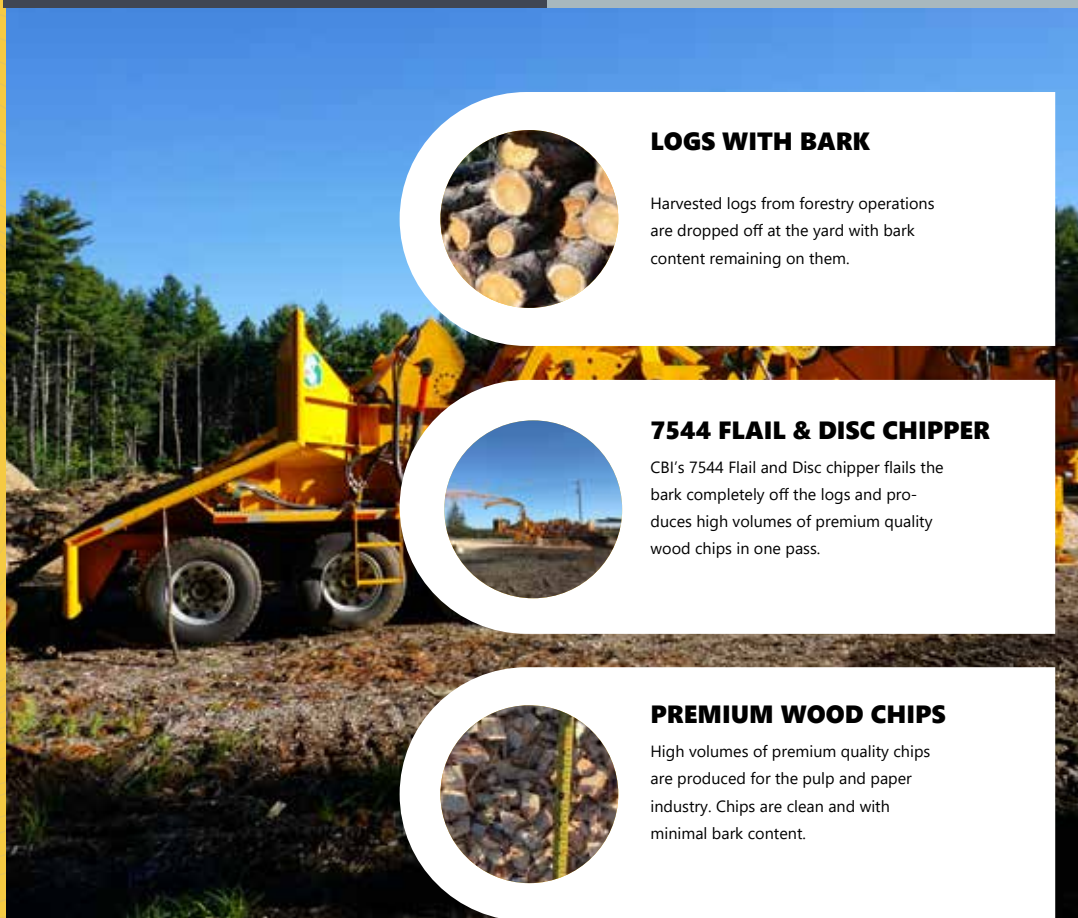
### COGENERATION PLANT FUEL

Operation hauls the final end product out of the woods and sells it to the co-gen plant. Precise spec size is not too big and not too small for optimal value.



## 6800CT APPLICATION

## 7544 APPLICATION EXAMPLE



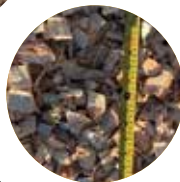
### LOGS WITH BARK

Harvested logs from forestry operations are dropped off at the yard with bark content remaining on them.



### 7544 FLAIL & DISC CHIPPER

CBI's 7544 Flail and Disc chipper flails the bark completely off the logs and produces high volumes of premium quality wood chips in one pass.



### PREMIUM WOOD CHIPS

High volumes of premium quality chips are produced for the pulp and paper industry. Chips are clean and with minimal bark content.

### RAILROAD TIES

Operation is paid to accept high volumes of steel contaminated railroad ties. By design, railroad ties are built from strong material and difficult to break.



### 6400CT GRINDER

CBI's 6400CT Horizontal Grinder's solid steel rotor and brute package configuration grinds the ties. An overband magnet diverts the steel plates into a separate pile.

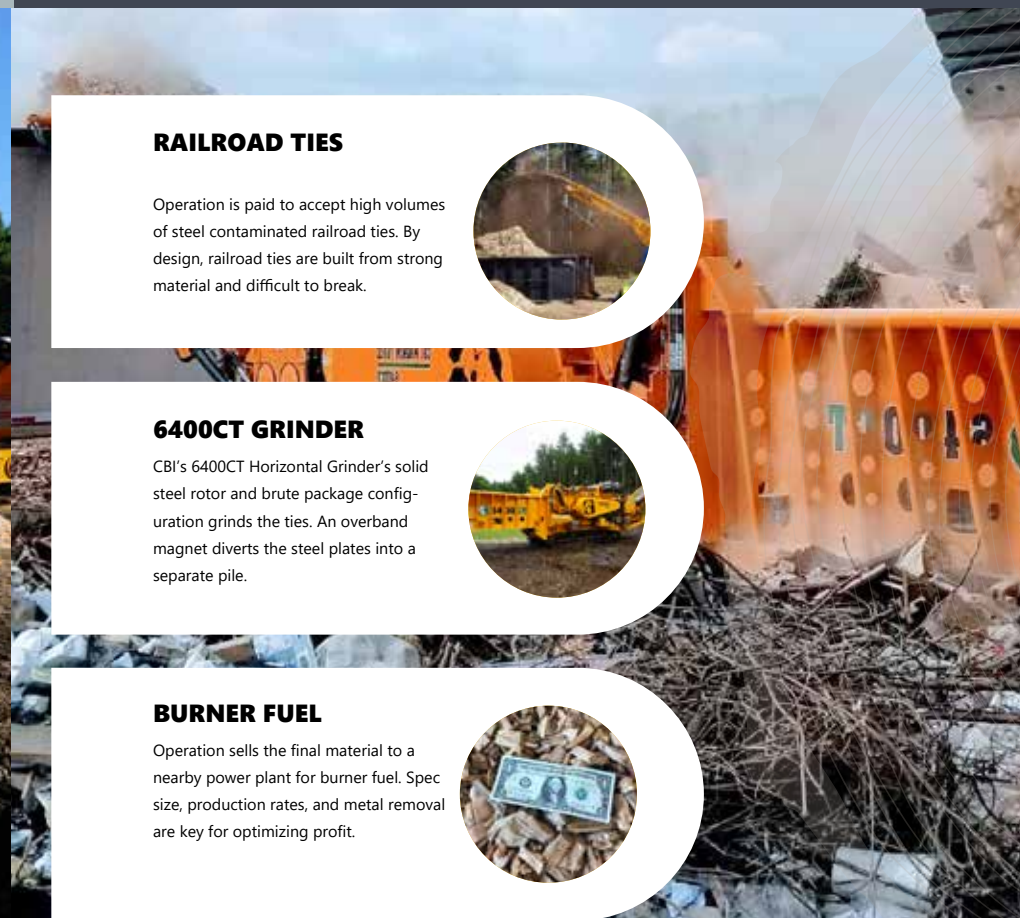


### BURNER FUEL

Operation sells the final material to a nearby power plant for burner fuel. Spec size, production rates, and metal removal are key for optimizing profit.



## 6400CT APPLICATION EXAMPLE





A TEREX BRAND



The material in this document is for information only and is subject to change without notice.

CBI assumes no liability resulting from errors or omissions in this document, or from the use of the information contained herein. Due to continual product development we reserve the right to change specifications without notice. Product performance figures given in this brochure are for guidance purposes only, this information does not constitute an expressed or implied warranty or guarantee. Results will vary depending on conveyor settings, feed source and types of material being processed.

Images are for illustrative purposes only, some or all of the machines in the illustrations may be fitted with optional extras. Please check with your Dealer for details on optional extras.

CBI is a registered trademark of Terex USA LLC in the United States of America and many other countries.  
Copyright 2025 Terex Published and Printed in July 2025 All machines are CE Approved.