

PORT HANDLING

LET'S HANDLE IT!

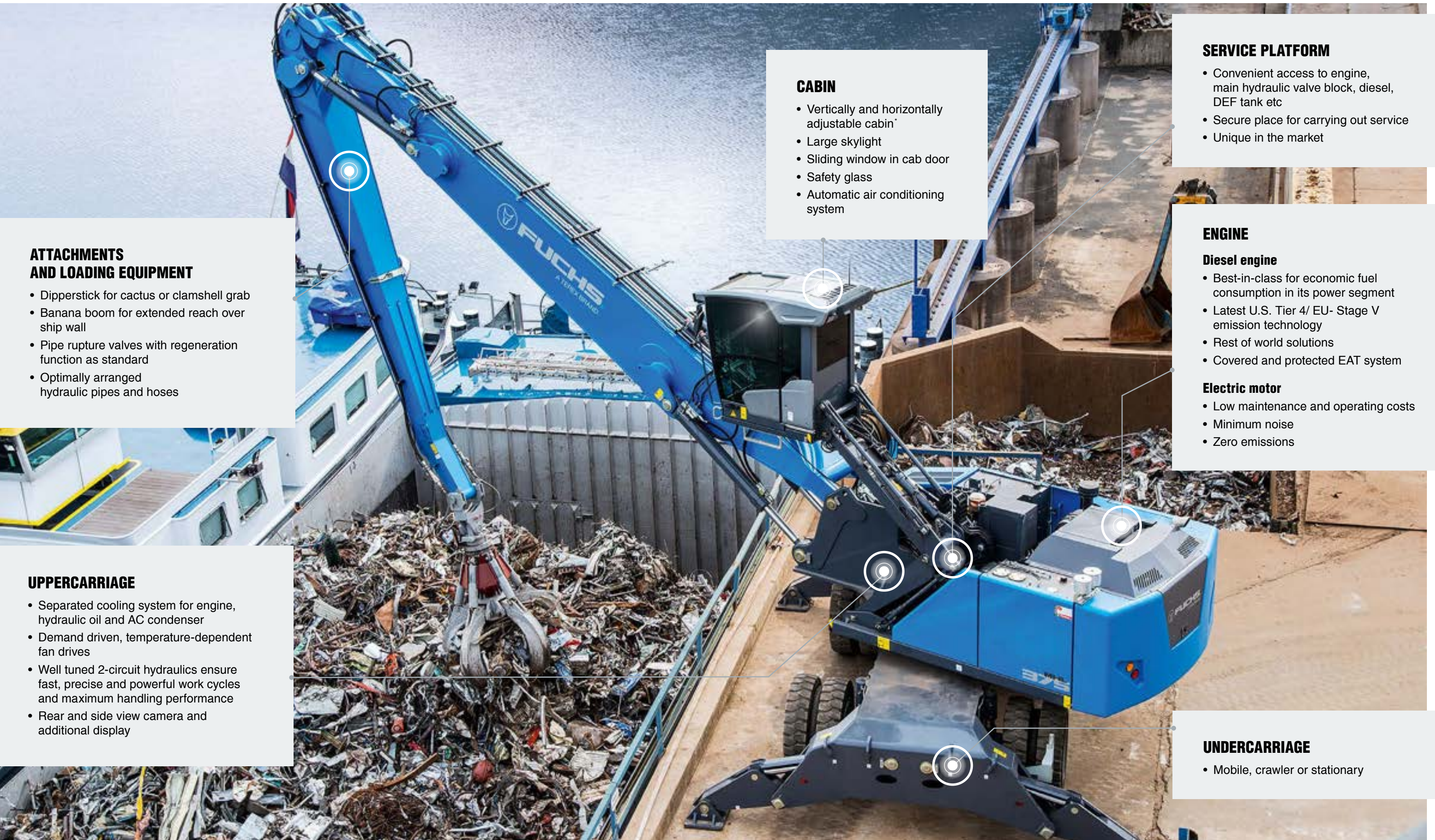


FUCHS[®]
PORT LINE



Fuchs has a wide range of material handlers that are powerful solutions for port handling.

Offering a variety of mobile, crawler and stationary undercarriage versions as well as various equipment combinations, attachments and quick coupling systems, Fuchs material handlers can be tailored for almost any application.



ATTACHMENTS AND LOADING EQUIPMENT

- Dipperstick for cactus or clamshell grab
- Banana boom for extended reach over ship wall
- Pipe rupture valves with regeneration function as standard
- Optimally arranged hydraulic pipes and hoses

UPPERCARRIAGE

- Separated cooling system for engine, hydraulic oil and AC condenser
- Demand driven, temperature-dependent fan drives
- Well tuned 2-circuit hydraulics ensure fast, precise and powerful work cycles and maximum handling performance
- Rear and side view camera and additional display

CABIN

- Vertically and horizontally adjustable cabin*
- Large skylight
- Sliding window in cab door
- Safety glass
- Automatic air conditioning system

SERVICE PLATFORM

- Convenient access to engine, main hydraulic valve block, diesel, DEF tank etc
- Secure place for carrying out service
- Unique in the market

ENGINE

Diesel engine

- Best-in-class for economic fuel consumption in its power segment
- Latest U.S. Tier 4/ EU- Stage V emission technology
- Rest of world solutions
- Covered and protected EAT system

Electric motor

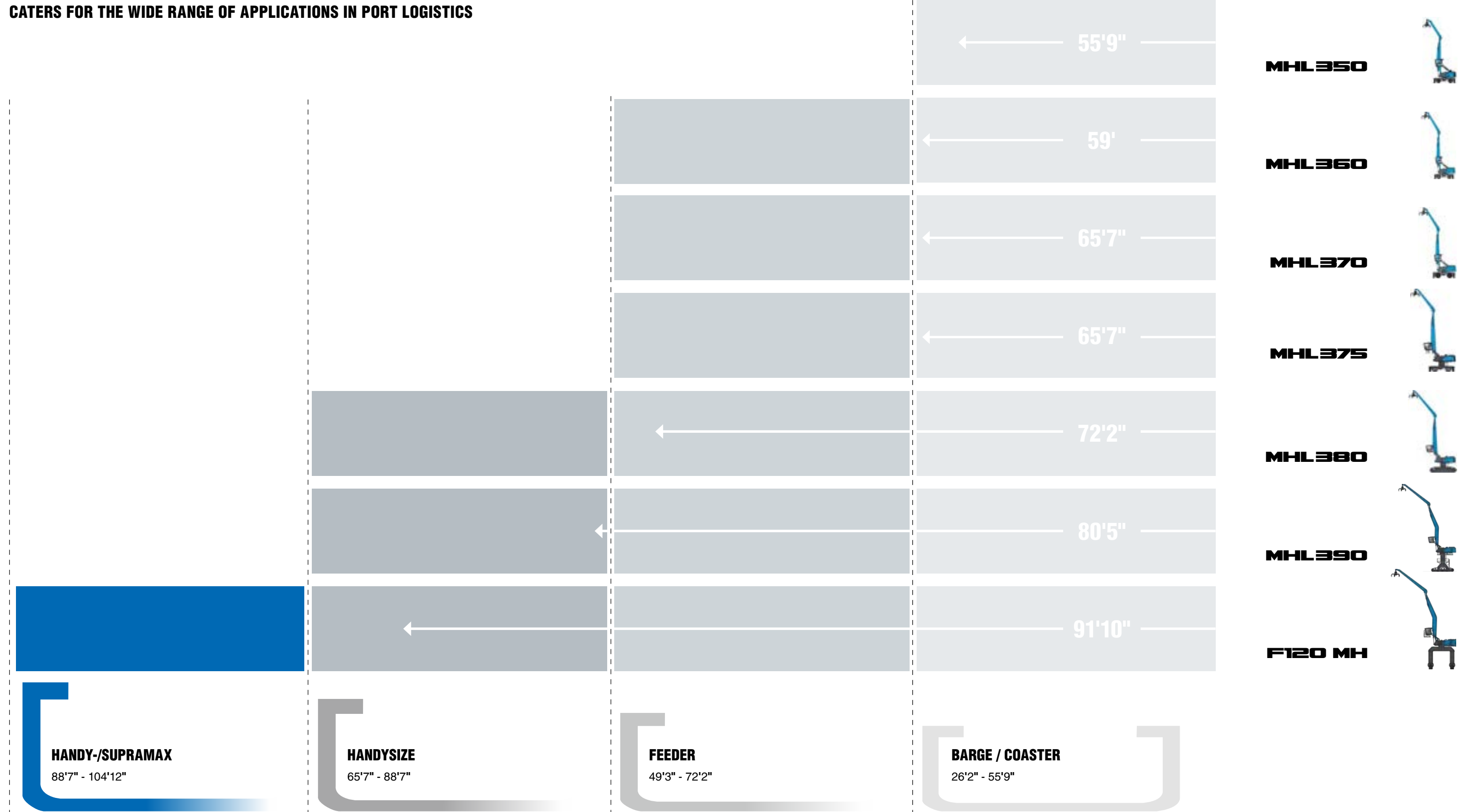
- Low maintenance and operating costs
- Minimum noise
- Zero emissions

UNDERCARRIAGE

- Mobile, crawler or stationary

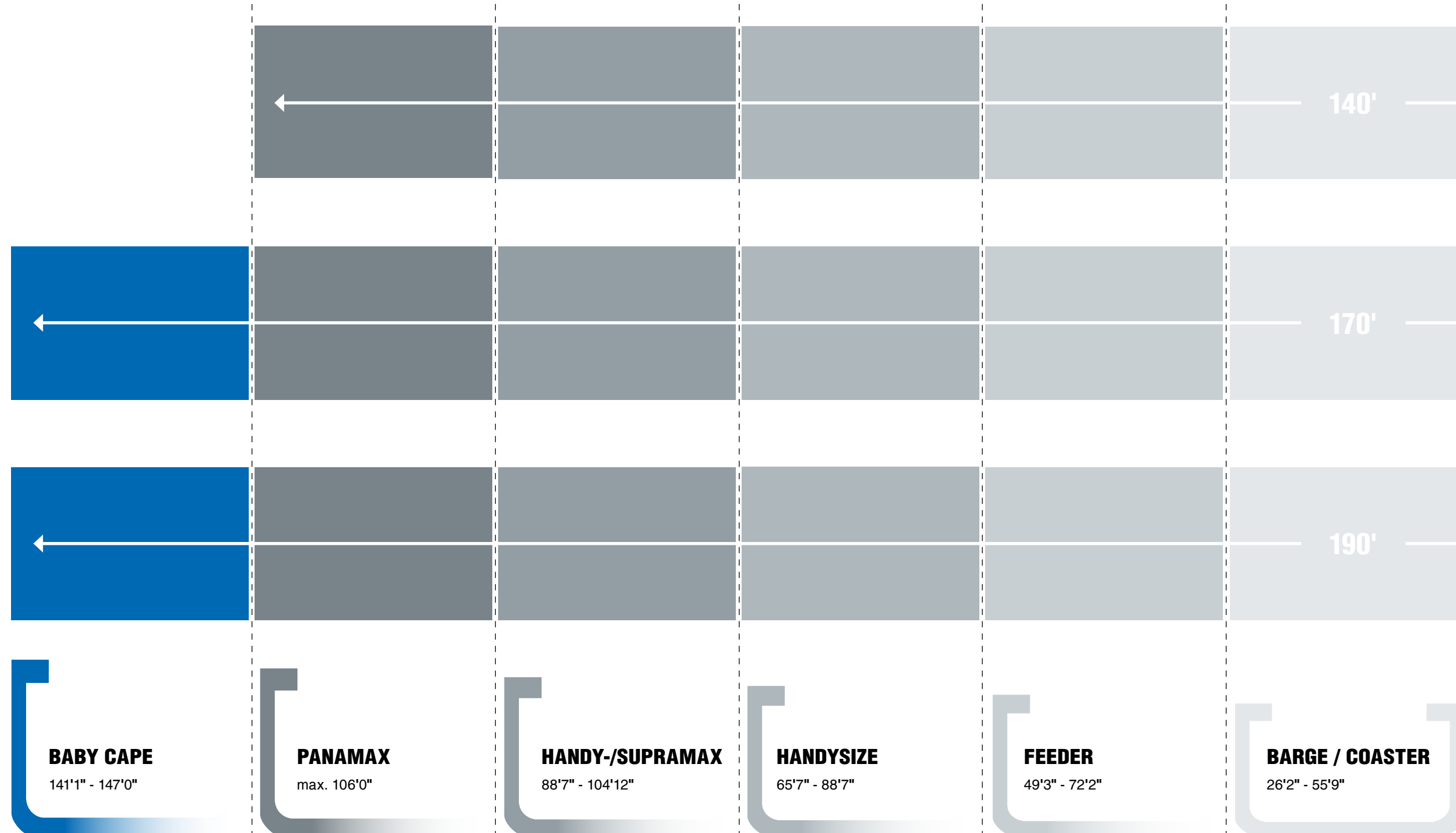
FUCHS PROGRAMME

CATERS FOR THE WIDE RANGE OF APPLICATIONS IN PORT LOGISTICS



FUCHS PORT LINE CONVEYORS

CATERS FOR THE WIDE RANGE OF APPLICATIONS IN PORT LOGISTICS



TCW 42



TCW 52



TCW 58

GREAT FEATURES COME STANDARD WITH YOUR FUCHS



FUCHS SERVICE PLATFORM

Safe place for daily checks and maintenance

HYDRAULIC PIPES

Metal pipes, great longevity



SEPARATED COOLING SYSTEM

For engine and hydraulic oil coolers



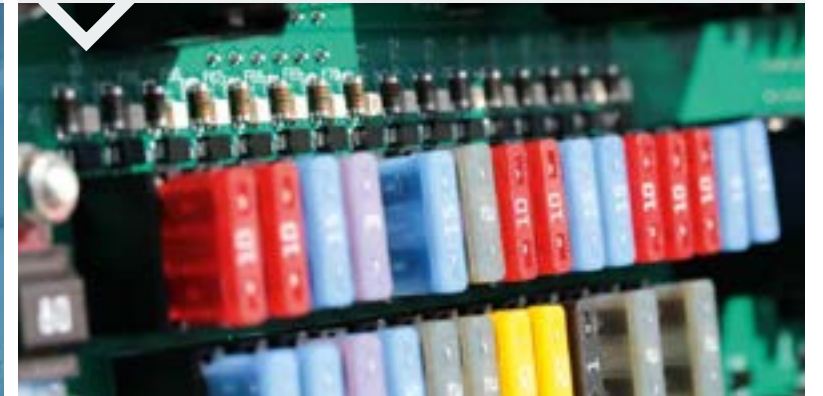
DUAL-EAR PIN CONNECTION

Optimal distribution of force, high longevity, less wear and tear



QUICK FUSE CHECK BUTTON

Fuses can be checked quickly and easily



HOSE RUPTURE SAFETY VALVES

Hose rupture safety valves with regeneration function as standard from the MHL360 to the F120 MH



CONTROL DISPLAY

Touchscreen LCD display: the dashboard provides all important information at a glance



OIL PRESSURE AND FLOW ADJUSTMENT

Parameters can be easily fine-tuned to your personal preference



SLEWING RING

Internally geared double row slewing ring bearing, greasing via automatic lubrication system



SPECIAL OPTIONS FOR PORT APPLICATIONS



VARIOUS TYPES OF CATWALKS

Safe and easy access



FLAT TRACK SHOES

Exert a minimum amount of ground pressure

BANANA BOOM

Improves reach on high ship sides and enables efficient material outtake even in the deeper areas of the vessel



HIGH PRESSURE FILTRATION SYSTEM FOR ATTACHMENTS

Effective protection against contamination of hydraulic oil caused by damaged or leaking attachments monitored on the display



TRIPLE GROUSER PLATE

Suitable for challenging ground conditions



SINGLE TYRES

Maximum ground clearance



ELECTRIC DRIVEN MATERIAL HANDLER

Electric drives are today's forward-looking trend. This is particularly the case with indoor applications, stationary machines and machines with rail undercarriage, in which powerful zero-emission electric drives have very tangible advantages. They include low operating and servicing costs and low noise emissions. The extensive use of standard components from our range of diesel driven models ensure that spare parts are widely available.

The right connection, every single time: the cable lengths and reel designs of Fuchs electric machines are adapted to customer's specific needs, in line with the required range and the available connection options on site.



ZERO EMISSIONS

No exhaust gases, little noise and very little heat output: ideal features when operating indoors or close to residential areas.



MHL350 G

DIESEL ENGINE

- U.S. Tier 4 / EU Stage V
- EDG-Version (EU Stage IIIA/U.S. Tier 3) *
- Deutz 6.1 L6 / TCD2013 L6
- 6-cylinder inline

ELECTRIC MOTOR

Power: 132 kW
 Total connected load: 170 kW
 Motor start: via soft start
 Optional cable reel: up to 164' (other lengths on request)

LOADING EQUIPMENT

- with dipperstick 55'9"
- with universal stick 48'6"
- Fuchs QuickConnect 42'11"

CAB SYSTEMS

- vertically adjustable



215 hp



215 hp



132 kW



79,366 lbs



18'5"

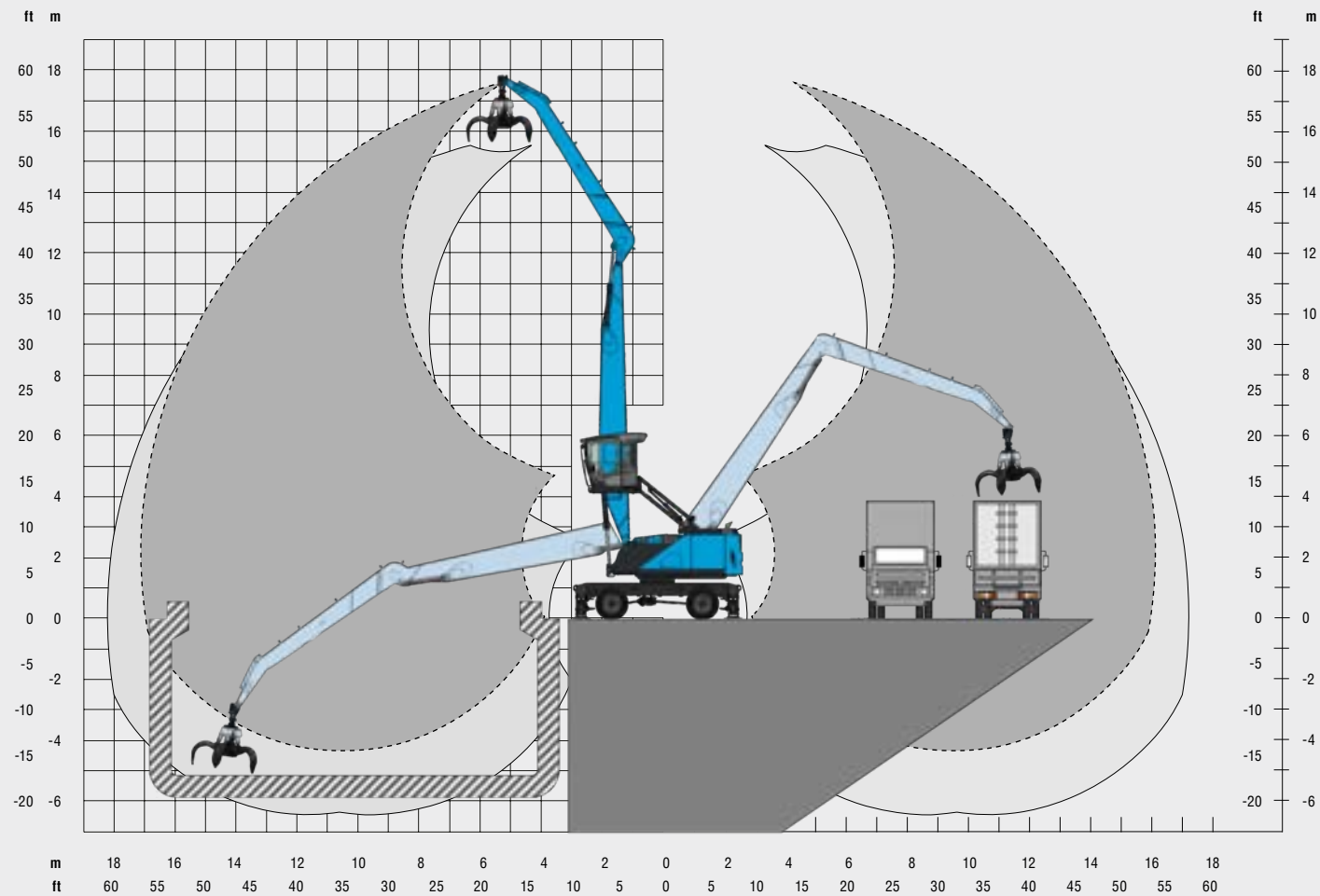
* for low-regulated markets



MHL350 G

Application Example

- **LOADING EQUIPMENT: 55'9"** • **CABIN: VERTICALLY ADJUSTABLE**
- **VIEWING HEIGHT: 18'8"** • **UNDERCARRIAGE: MOBILE**



UNDERCARRIAGE VARIANTS AVAILABLE FOR DIFFERENT APPLICATION REQUIREMENTS



Mobile
MHL350 G



Crawler
RHL350 G



Stationary
AHL350 G



Mobile with Pylon
MHL350 G (Pylon)



Crawler with Pylon
RHL350 G (Pylon)



Stationary with Pylon
AHL350 G (Pylon)



MHL360

DIESEL ENGINE

- U.S. Tier 4 / EU Stage V
- U.S. Tier 3 * / EU Stage IIIA *
- Deutz TCD 7.8 L6 4V / TCD2013 L06 2V
- 6-cylinder inline

ELECTRIC MOTOR

Power: 160 kW
 Total connected load: 210 kW
 Motor start: via soft start
 Optional cable reel: up to 164' (other lengths on request)

LOADING EQUIPMENT

- with straight boom 54'2" / 59'
- with banana boom 59'

CAB SYSTEMS

- vertically adjustable
- vertically and horizontally adjustable



255 hp



186 kW



250 hp



107,585 lbs



20'

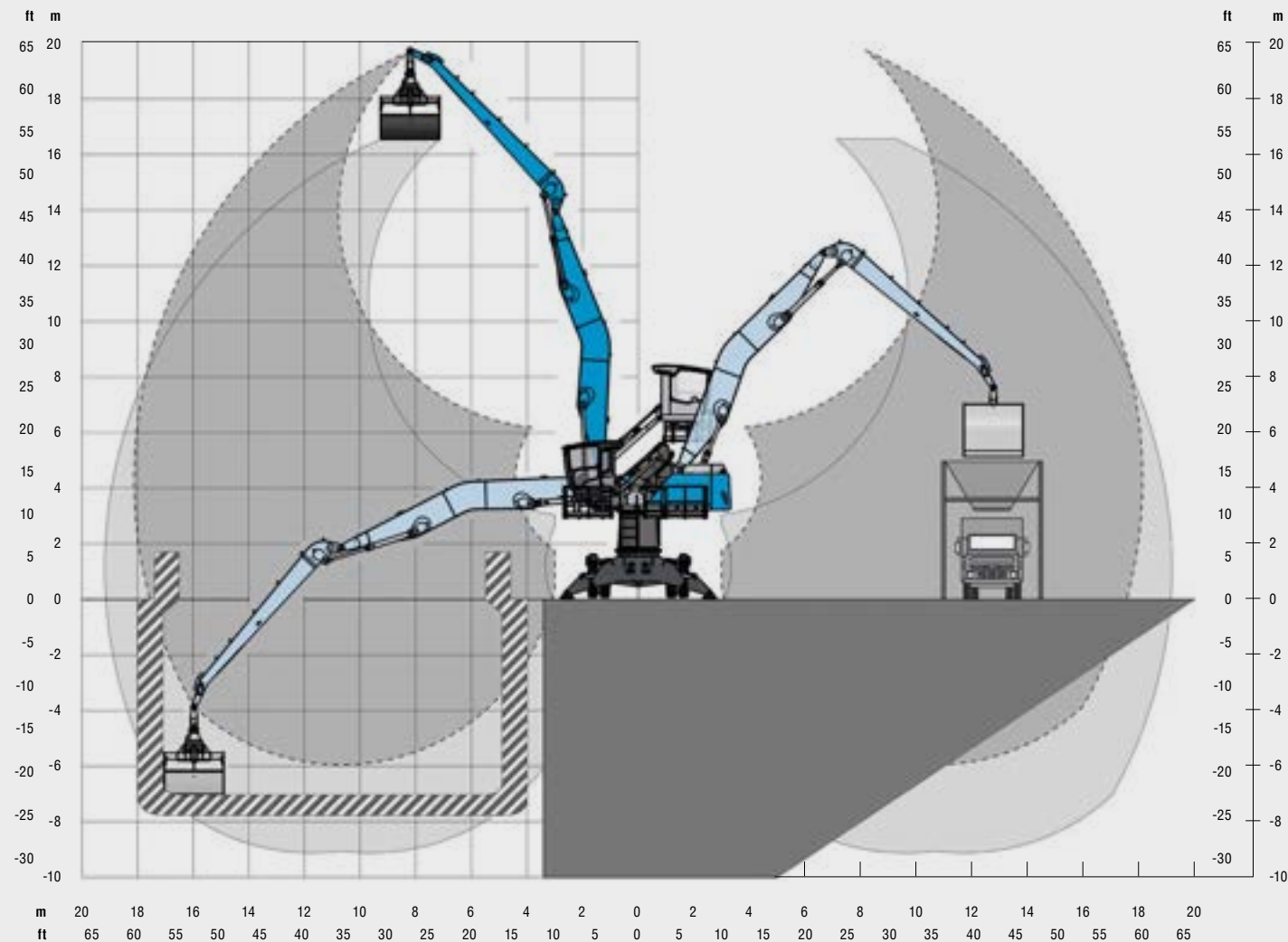
* for low-regulated markets



MHL360

Application Example

- **LOADING EQUIPMENT: 59' (BANANA BOOM)** • **CABIN: VERTICALLY ADJUSTABLE**
- **VIEWING HEIGHT: 24'7"** • **UNDERCARRIAGE: MOBILE + PYLON**



UNDERCARRIAGE VARIANTS AVAILABLE FOR DIFFERENT APPLICATION REQUIREMENTS



Mobile
MHL360 F



Crawler
RHL360 F



Stationary
AHL360 F



Mobile with Pylon
MHL360 F (Pylon)



Crawler with Pylon
RHL360 F (Pylon)



Stationary with Pylon
AHL360 F (Pylon)



MHL370

DIESEL ENGINE

- U.S. Tier 4 / EU Stage V
- U.S. Tier 3 */ EU Stage IIIA *
- Deutz TCD 7.8 L6
- 6-cylinder inline

ELECTRIC MOTOR

Power: 200 kW
 Total connected load: 250 kW
 Motor start: via soft start
 Optional cable reel: up to 164'
 (other lengths on request)

LOADING EQUIPMENT

- with straight boom 54'2" / 59' / 62'4" / 65'7"
- with banana boom 54'2"

CAB SYSTEMS

- vertically adjustable
- vertically and horizontally adjustable



308 hp



308 hp



200 kW



114,640 lbs



20'

* for low-regulated markets



U.S. Tier 4 E/
EU Stage V



U.S. Tier 3/
EU Stage IIIA



Electric motor



Max. service weight
without attachments

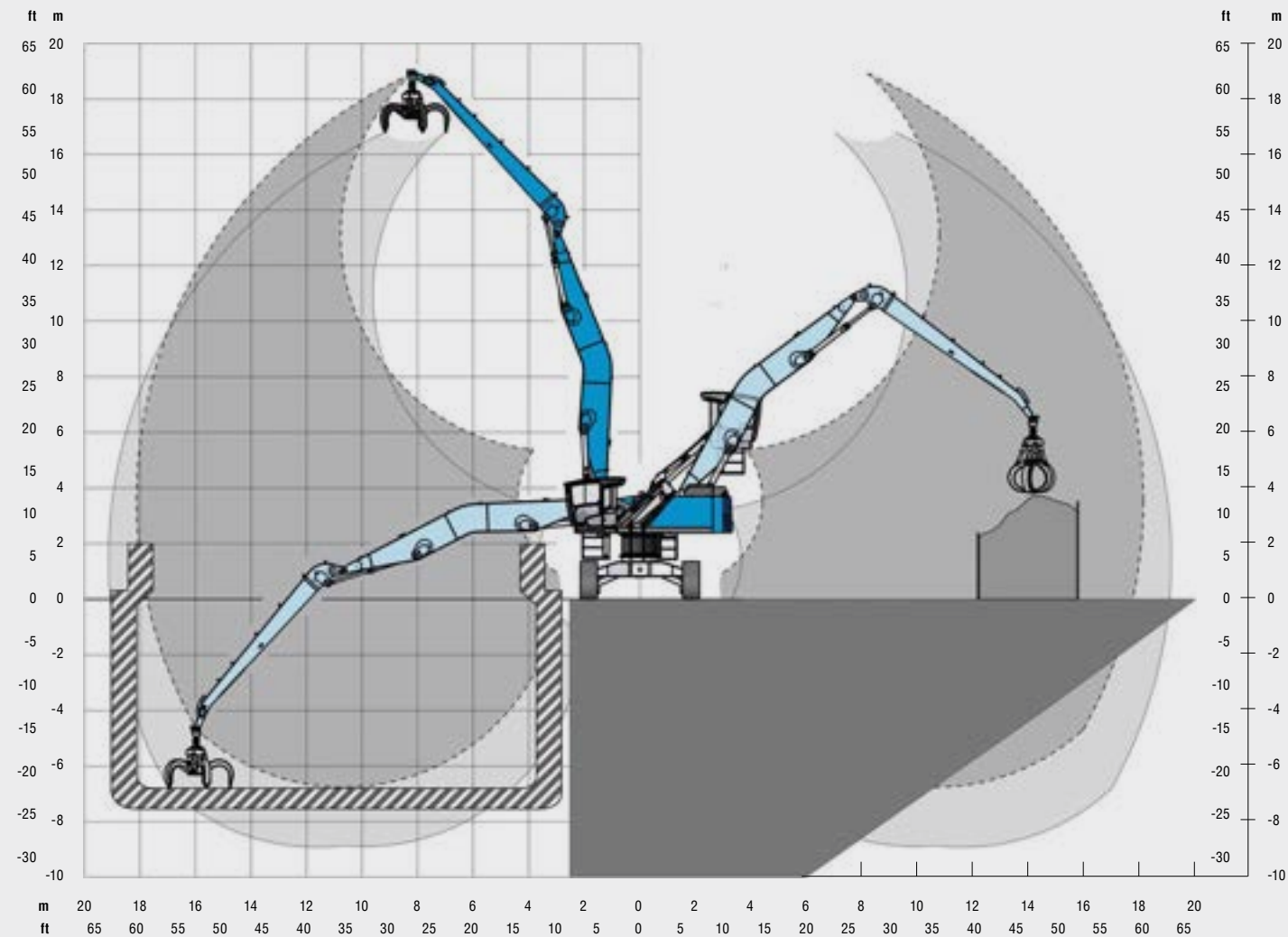


Max. viewing height

MHL370

Application Example

- **LOADING EQUIPMENT: 59' (BANANA BOOM)** • **CABIN: VERTICALLY ADJUSTABLE**
- **VIEWING HEIGHT: 24'7"** • **UNDERCARRIAGE: CRAWLER + PYLON**



UNDERCARRIAGE VARIANTS AVAILABLE FOR DIFFERENT APPLICATION REQUIREMENTS



Mobile
MHL370 F



Crawler
RHL370 F



Stationary
AHL370 F



Mobile with Pylon
MHL370 F (Pylon)



Crawler with Pylon
RHL370 F (Pylon)



Stationary with Pylon
AHL370 F (Pylon)



MHL375

DIESEL ENGINE

- U.S. Tier 4 / EU Stage V
- U.S. Tier 3 */ EU Stage IIIA *
- Deutz TCD 7.8 L6
- 6-cylinder inline

ELECTRIC MOTOR

- Power: 220 kW
- Total connected load: 270 kW
- Motor start: via soft start
- Optional cable reel: up to 164'
- (other lengths on request)

LOADING EQUIPMENT

- with straight boom 59' / 65'7"

CAB SYSTEMS

- vertically adjustable
- vertically and horizontally adjustable



328 hp



328 hp



220 kW



146,607 lbs



19'8"

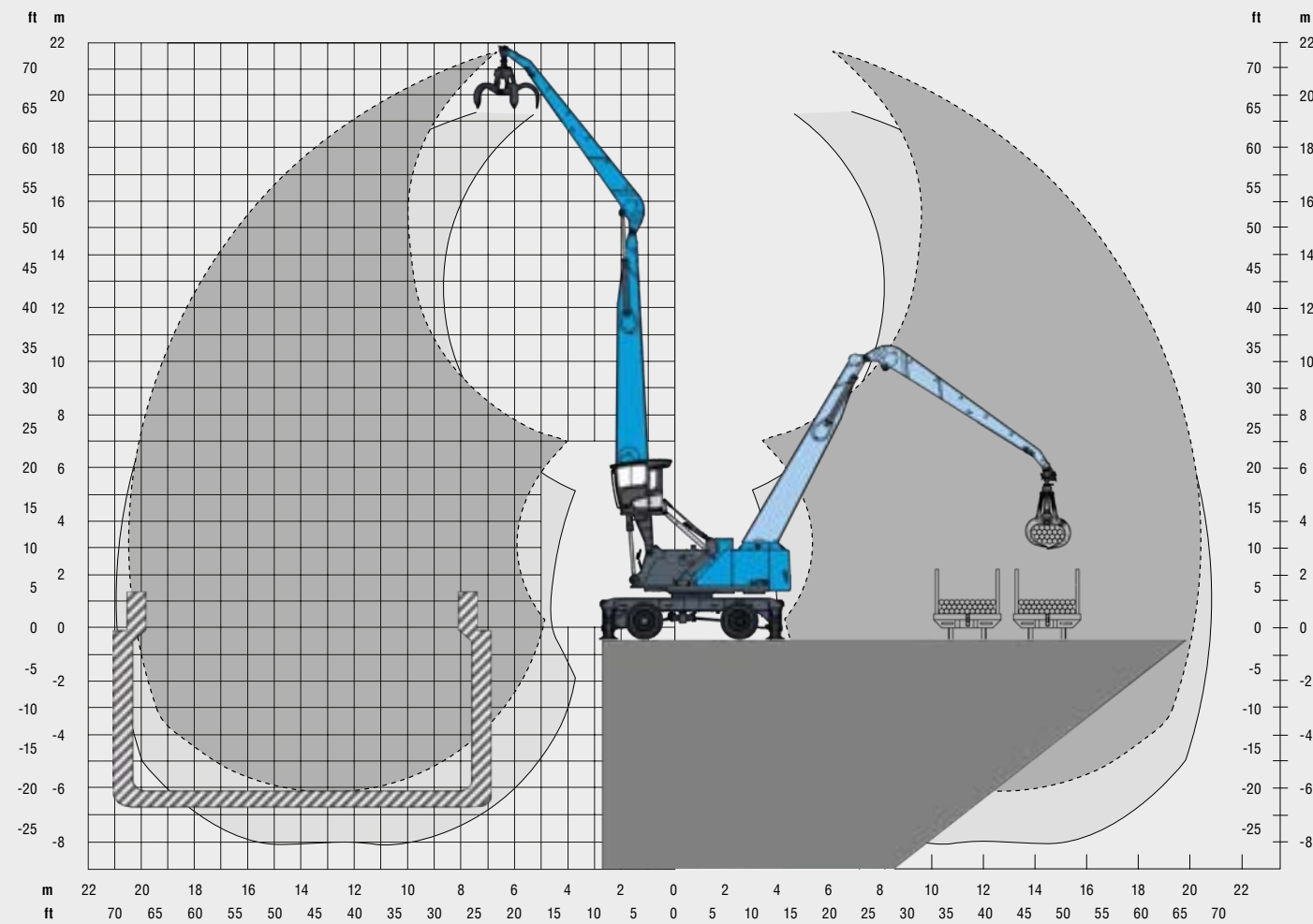
* for low-regulated markets



MHL375

Application Example

- **LOADING EQUIPMENT: 65'7"** • **CABIN: VERTICALLY ADJUSTABLE**
- **VIEWING HEIGHT: 19'8"** • **UNDERCARRIAGE: MOBILE**



UNDERCARRIAGE VARIANTS AVAILABLE FOR DIFFERENT APPLICATION REQUIREMENTS



Mobile
MHL375 F



Stationary
AHL375 F



Mobile with Pylon
MHL375 F (Pylon)



Stationary with Pylon
AHL375 F (Pylon)



MHL380

DIESEL ENGINE

- U.S. Tier 4 / EU Stage V
- U.S. Tier 3 */ EU Stage IIIA *
- Deutz TCD 7.8 L6
- 6-cylinder inline

ELECTRIC MOTOR

Power: 220 kW
 Total connected load: 270 kW
 Motor start: via soft start
 Optional cable reel: up to 164'
 (other lengths on request)

LOADING EQUIPMENT

- with straight boom 59' / 65'7" / 72'2"
- with banana boom 65'7" / 72'2"

CAB SYSTEMS

- vertically adjustable
- vertically and horizontally adjustable



328 hp



328 hp



220 kW



158,292 lbs



20'

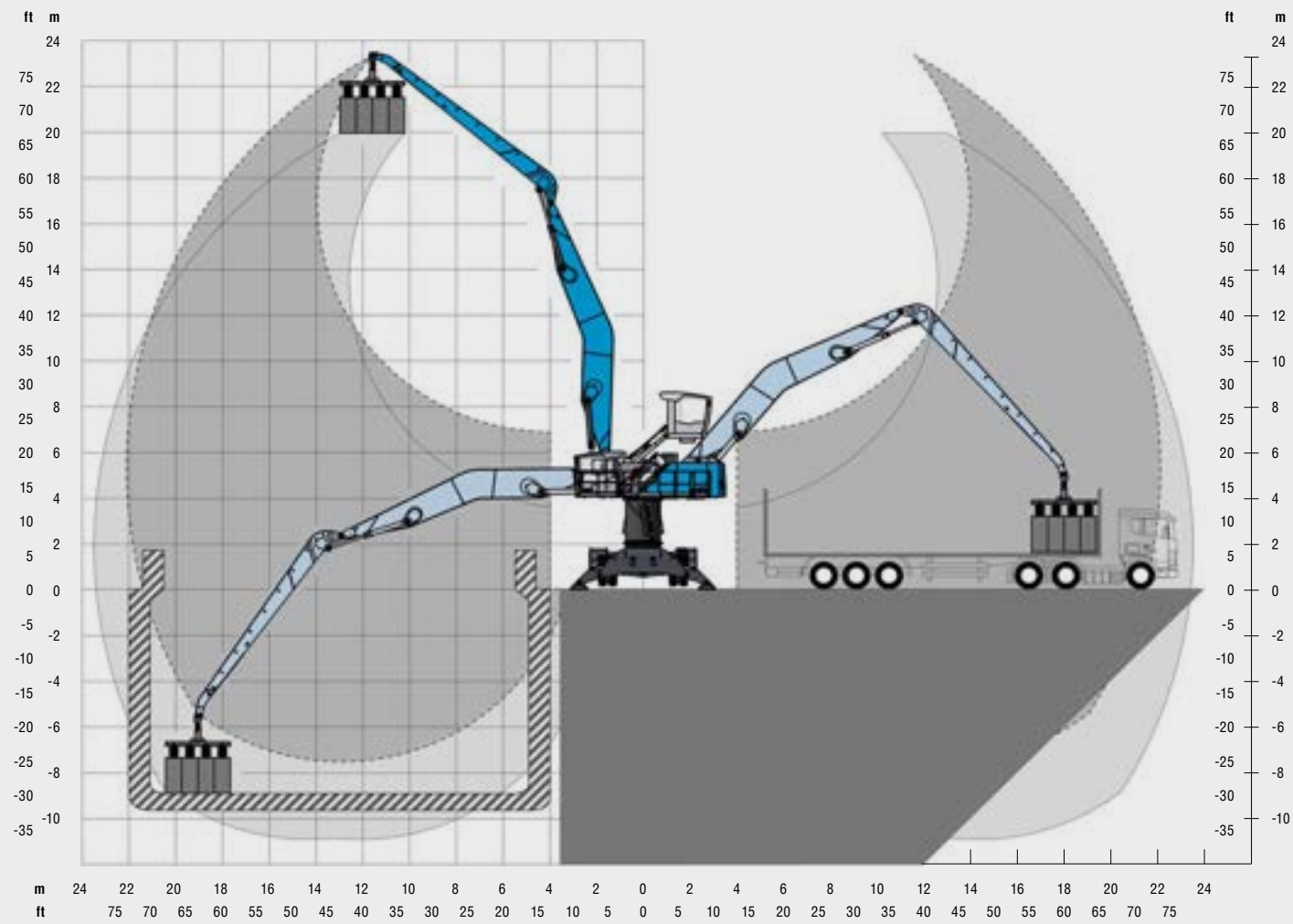
* for low-regulated markets



MHL380

Application Example

- **LOADING EQUIPMENT: 72'2" (BANANA BOOM)** • **CABIN: VERTICALLY ADJUSTABLE**
- **VIEWING HEIGHT: 26'2"** • **UNDERCARRIAGE: MOBILE + PYLON**



UNDERCARRIAGE VARIANTS AVAILABLE FOR DIFFERENT APPLICATION REQUIREMENTS



Mobile
MHL380 F



Crawler
RHL380 F



Stationary
AHL380 F



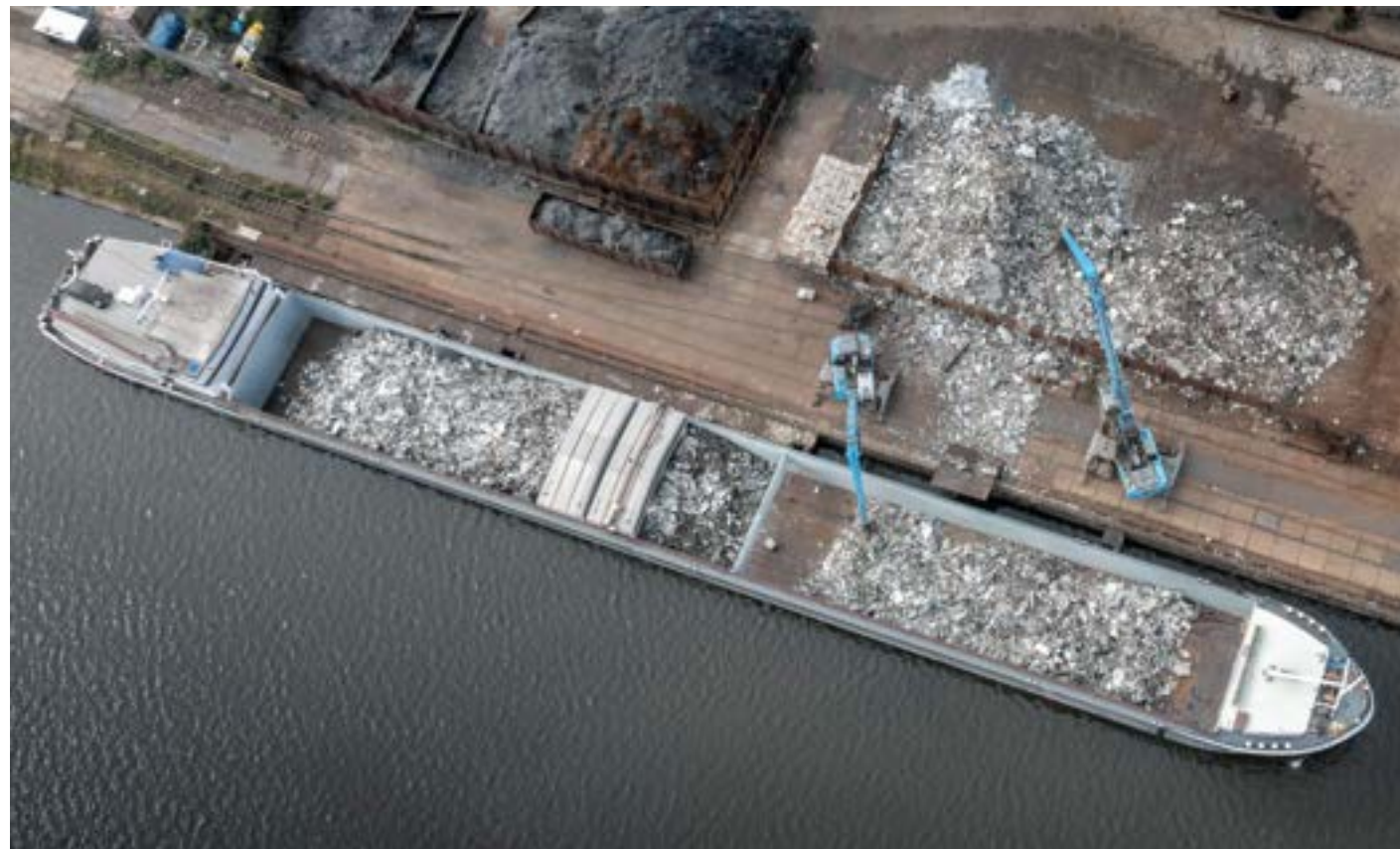
Mobile with Pylon
MHL380 F (Pylon)



Crawler with Pylon
RHL380 F (Pylon)



Stationary with Pylon
AHL380 F (Pylon)



MHL390

DIESEL ENGINE

- U.S. Tier 4 / EU Stage V
- U.S. Tier 3 * / EU Stage IIIA *
- Deutz TCD 12.0 V6 / TCD2015 V06
- 6-cylinder inline

ELECTRIC MOTOR

Power: 250 kW
 Total connected load: 304 kW
 Motor start: via soft start
 Optional cable reel: up to 164'
 (other lengths on request)

LOADING EQUIPMENT

- with straight boom 72'2" / 78'9"
- with banana boom 80'5"

CAB SYSTEMS

- vertically adjustable
- vertically and horizontally adjustable
- cabin system "Port"



402 hp



366 hp



250 kW



2447,131 lbs



20'

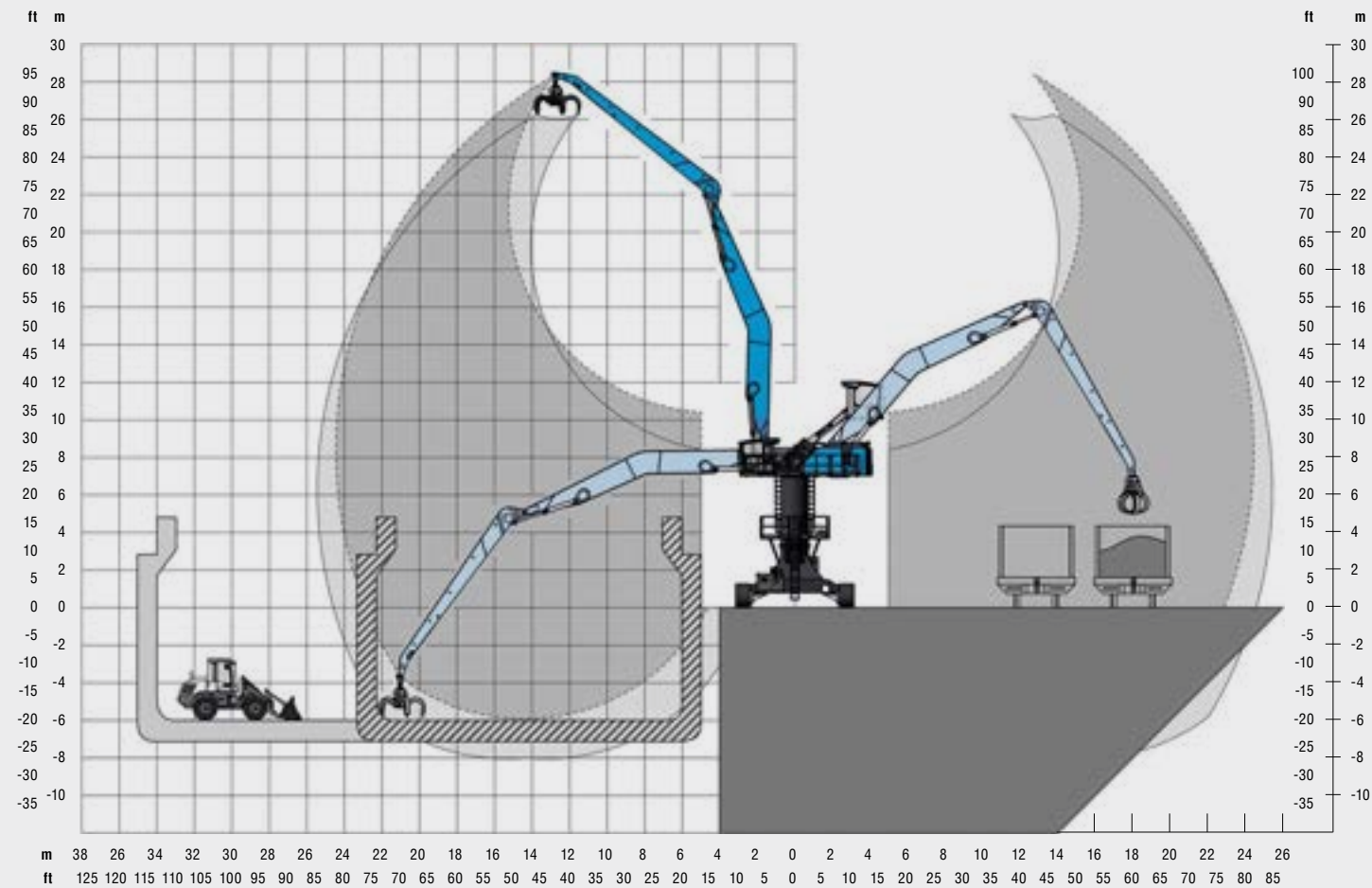
* for low-regulated markets



MHL390

Application Example (Pylon)

- **LOADING EQUIPMENT: 80'5" (BANANA BOOM)** • **CABIN: VERTICALLY AND HORIZONTALLY ADJUSTABLE** • **VIEWING HEIGHT: 37'9"** • **UNDERCARRIAGE: CRAWLER + PYLON**



UNDERCARRIAGE VARIANTS AVAILABLE FOR DIFFERENT APPLICATION REQUIREMENTS



Mobile
MHL390 F



Crawler
RHL390 F



Stationary
AHL390 F



Mobile with Pylon
MHL390 F (Pylon)



Crawler with Pylon
RHL390 F (Pylon)



Stationary with Pylon
AHL390 F (Pylon)



XL Crawler with Pylon
RHL390 XL

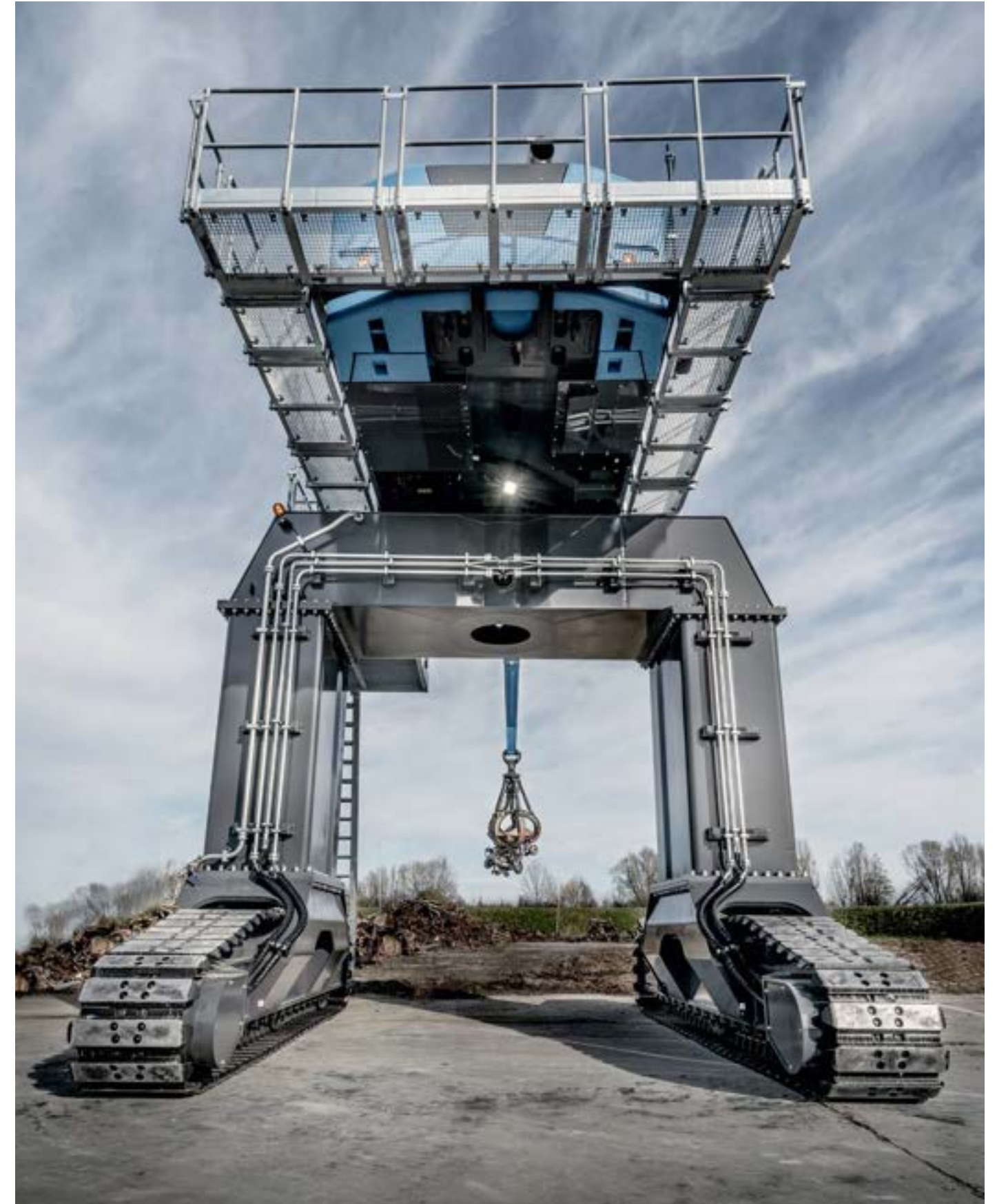
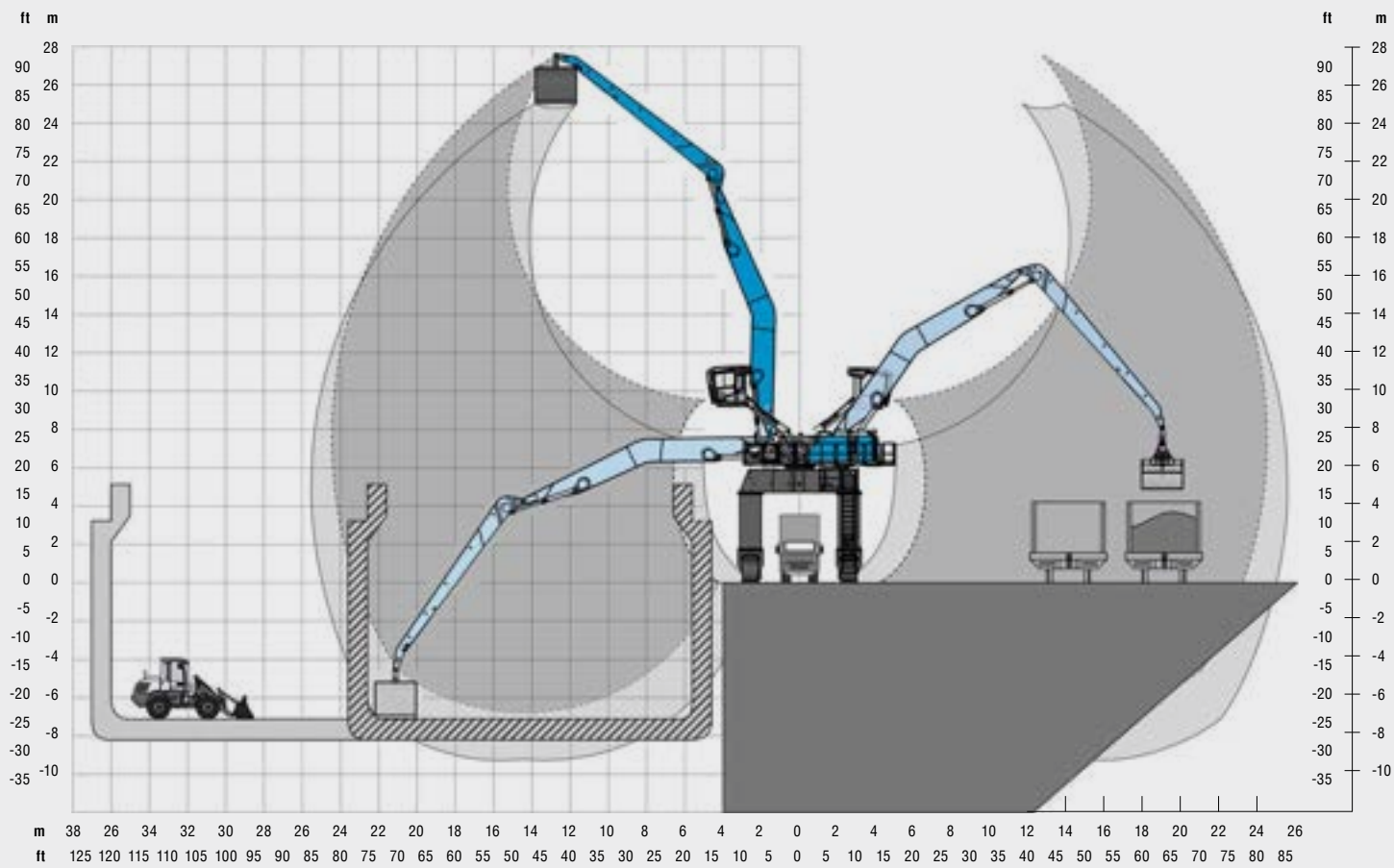


Crawler Gantry
RHL390 F (Gantry)

MHL390

Application Example (Gantry)

- **LOADING EQUIPMENT: 80'5" (BANANA BOOM)**
- **CABIN: VERTICALLY AND HORIZONTALLY ADJUSTABLE**
- **VIEWING HEIGHT: 34'5"**
- **UNDERCARRIAGE: GANTRY**





F120MH

DIESEL ENGINE

- U.S. Tier 4 / EU Stage V
- U.S. Tier 3 * / EU Stage IIIA *
- Deutz TCD 12.0 V6
- 6-cylinder inline

ELECTRIC MOTOR

Power: 280 kW
 Total connected load: 430 kW
 Motor start: via soft start
 Optional cable reel

LOADING EQUIPMENT

- with straight boom 59'6" / 91'10"
- with banana boom 59'6" / 91'10"

BLUE HYBRID SYSTEM

- Power: 150 kW
- Max system power: 500 kW

CAB SYSTEMS

- vertically and horizontally adjustable

5 469 hp

3 469 hp

280 kW

264,600-330,700 lbs

20'

* for low-regulated markets



ATTACHMENTS AND LOADING EQUIPMENT

- Robust and FEM-optimised loading device, designed for heavy-duty material handling applications
- Banana boom for an optimised range curve, which greatly facilitates the unloading of bulk carriers and barges
- Hydraulic installation designed for material handling, with mostly durable piping being used
- Hose rupture safety valves on allworking cylinders, while boom and stick cylinders also have hydraulic regeneration for enhanced efficiency and safety in every application
- Tool control: oil flowrate and pressures for attachments individually adjustable
- Blue Hybrid System: storage of recovered energy in accumulators when the charging medium is lowered, which can be used in the next loading cycle

CAB

- Fuchs comfort cab
- Large panoramic ceiling for optimal overhead visibility
- Wiper arms and motors are positioned outside the field of view
- Automatic climate control
- Various cab lifting systems available

DRIVE

- Blue Hybrid System reduces fuel consumption by up to 35%. The system power of 500 kW ensures energy efficient loading cycles, maximum handling performance and increases productivity

Diesel engine

- Low emissions thanks to state-of-the-art EU Stage 5 exhaust gas cleaning system
- Best-in-class fuel consumption
- Exhaust system is optimally protected against mechanical damage
- Extended oil service period

Electric motor

- Low operating costs
- Minimum noise
- ZERO emissions

UPPERCARRIAGE

- High-performance cooling systems, with separate coolers for the engine, the hydraulic oil and air conditioning
- Fans with thermostatic control, ensuring temperatures consistently remain within the optimal range. This prolongs their lifespan and helps to reduce operating costs
- Highly efficient mobile hydraulics
- Rear view and side camera

UNDERCARRIAGE

- Mobile *
- Crawler
- Gantry *
- Stationary *

FUCHS SERVICE PLATFORM

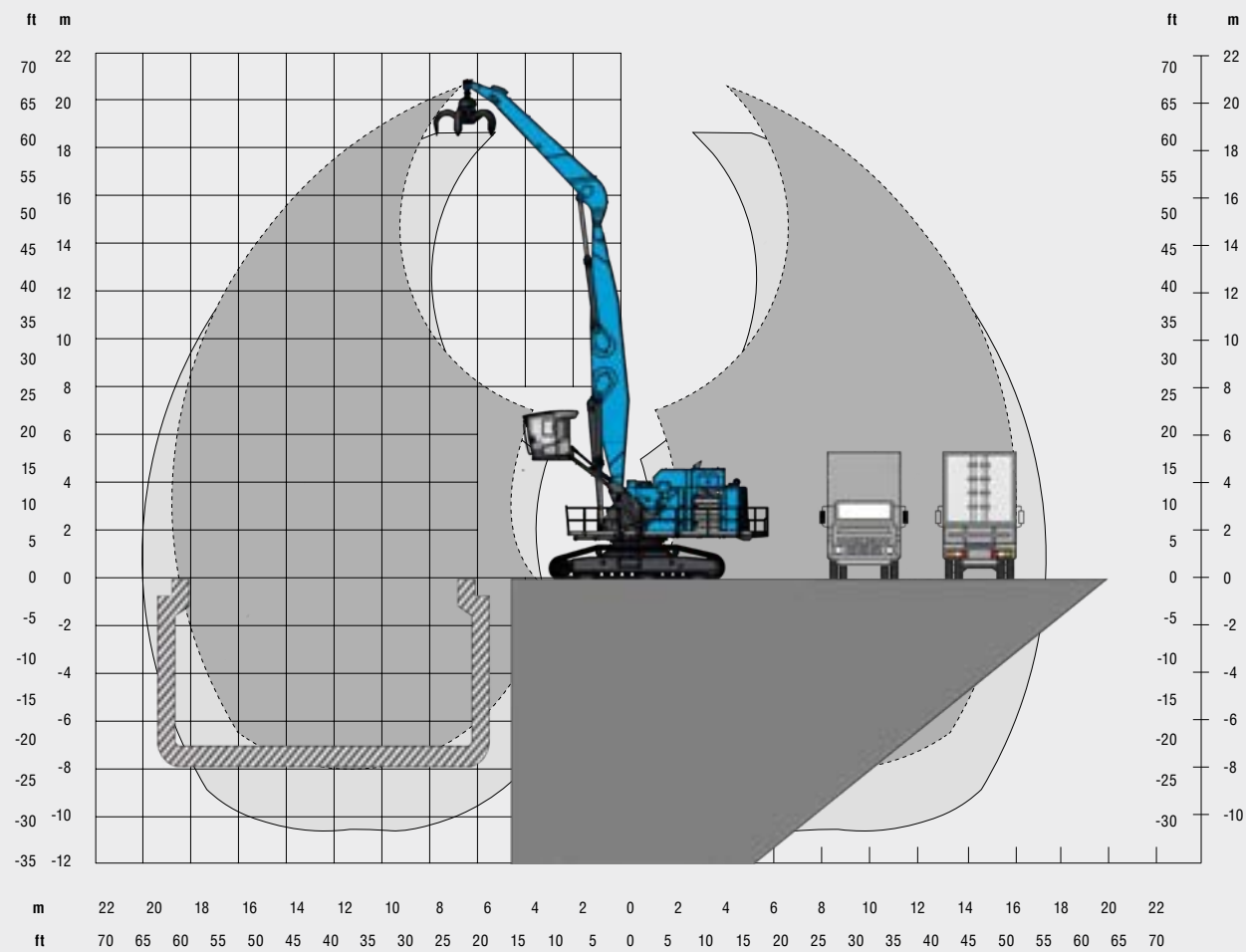
- Unique in the market
- Gantry machine: service platform access via catwalk
- Secure location for carrying out service
- Convenient access to engine compartment, Fuchs Hybrid system components, main control block, central lubrication system, air filter, tanks and much more.
- Generous maintenance flaps made of sheet steel supported by gas springs
- Maintenance work can be completed quickly, safely and comfortably



F120MH

Application Example

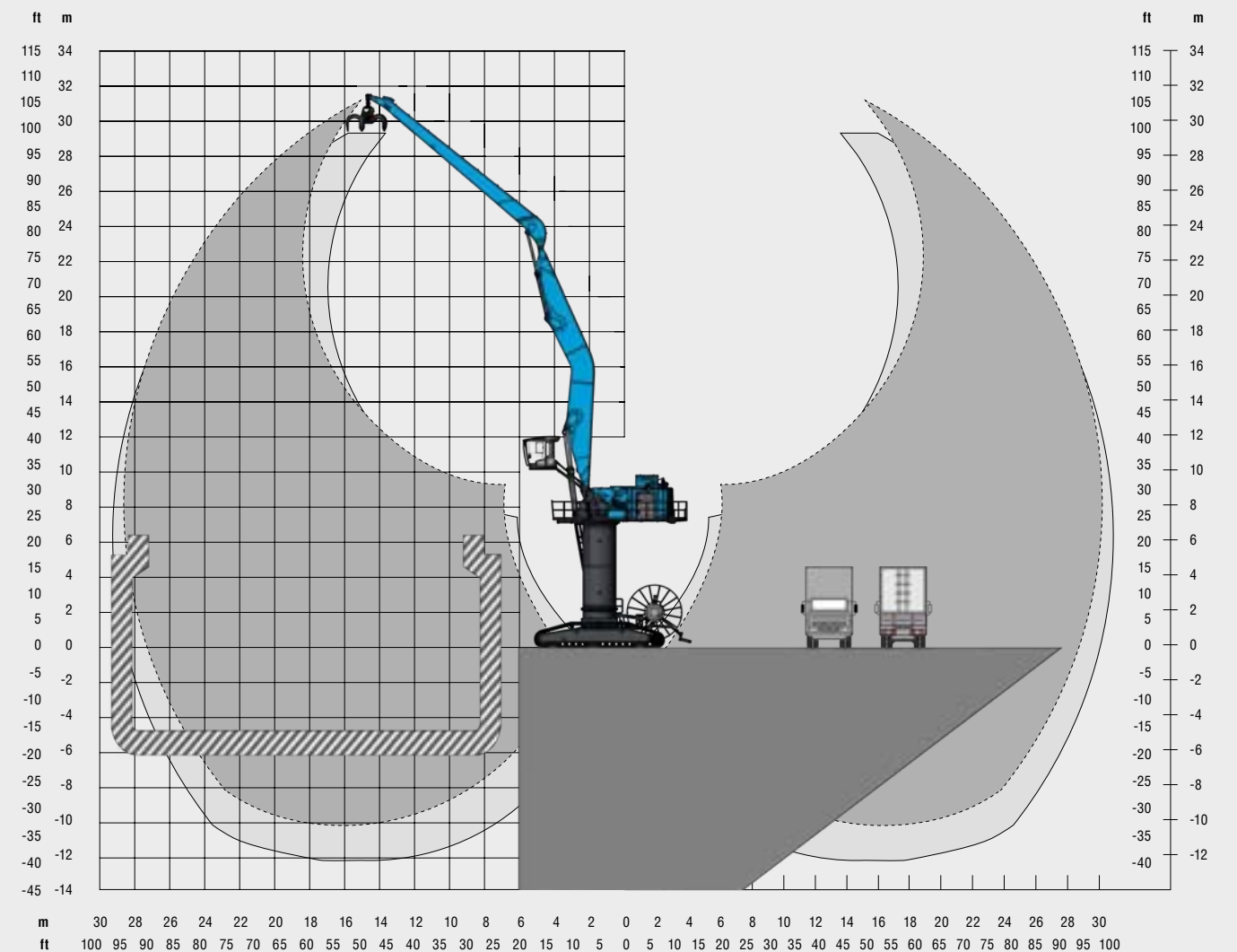
- **LOADING EQUIPMENT: 59'1" (STRAIGHT BOOM)** • **CABIN: VERTICALLY AND HORIZONTALLY ADJUSTABLE** • **VIEWING HEIGHT: 20'** • **UNDERCARRIAGE: CRAWLER**



F120MH

Application Example (Pylon)

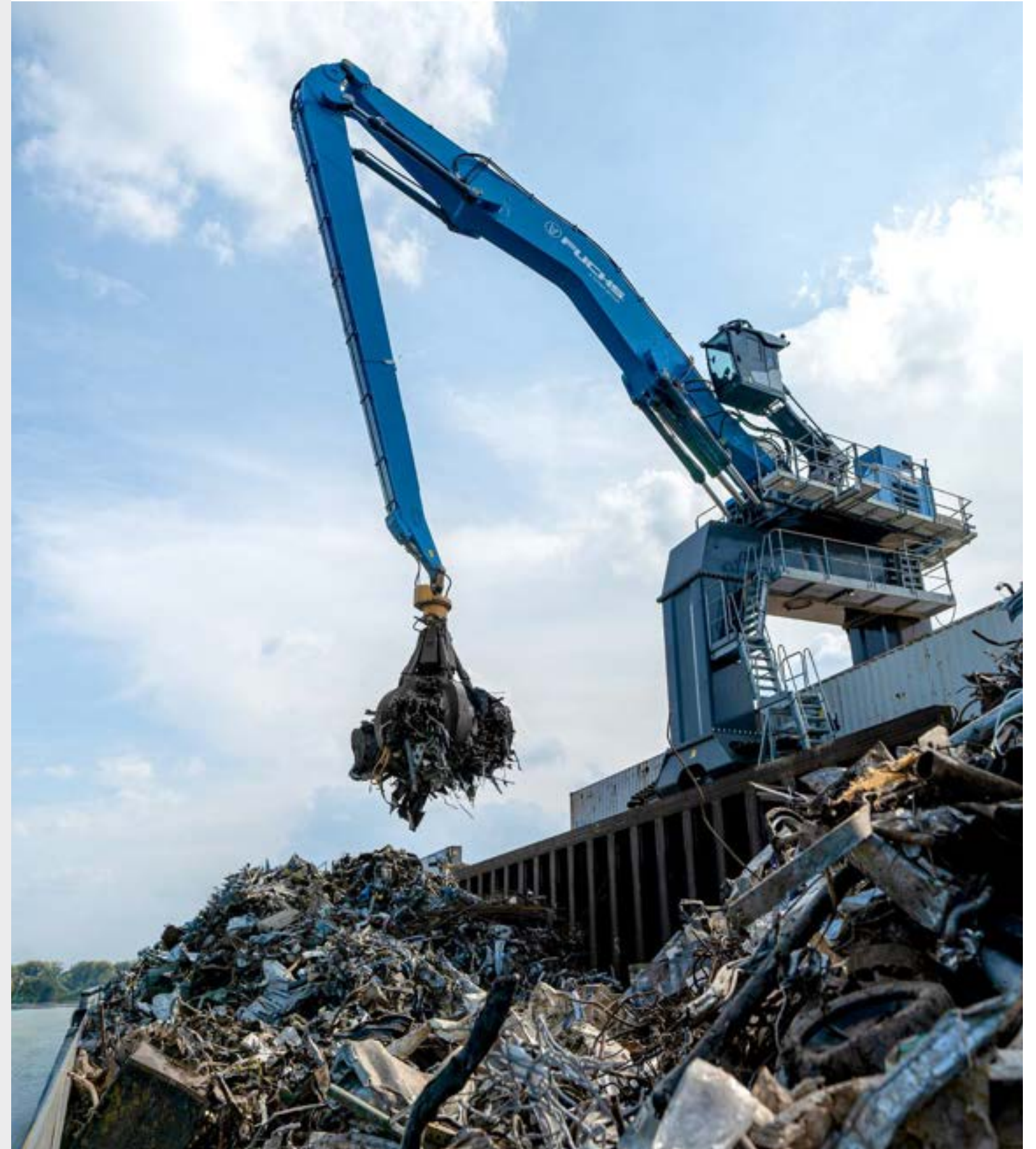
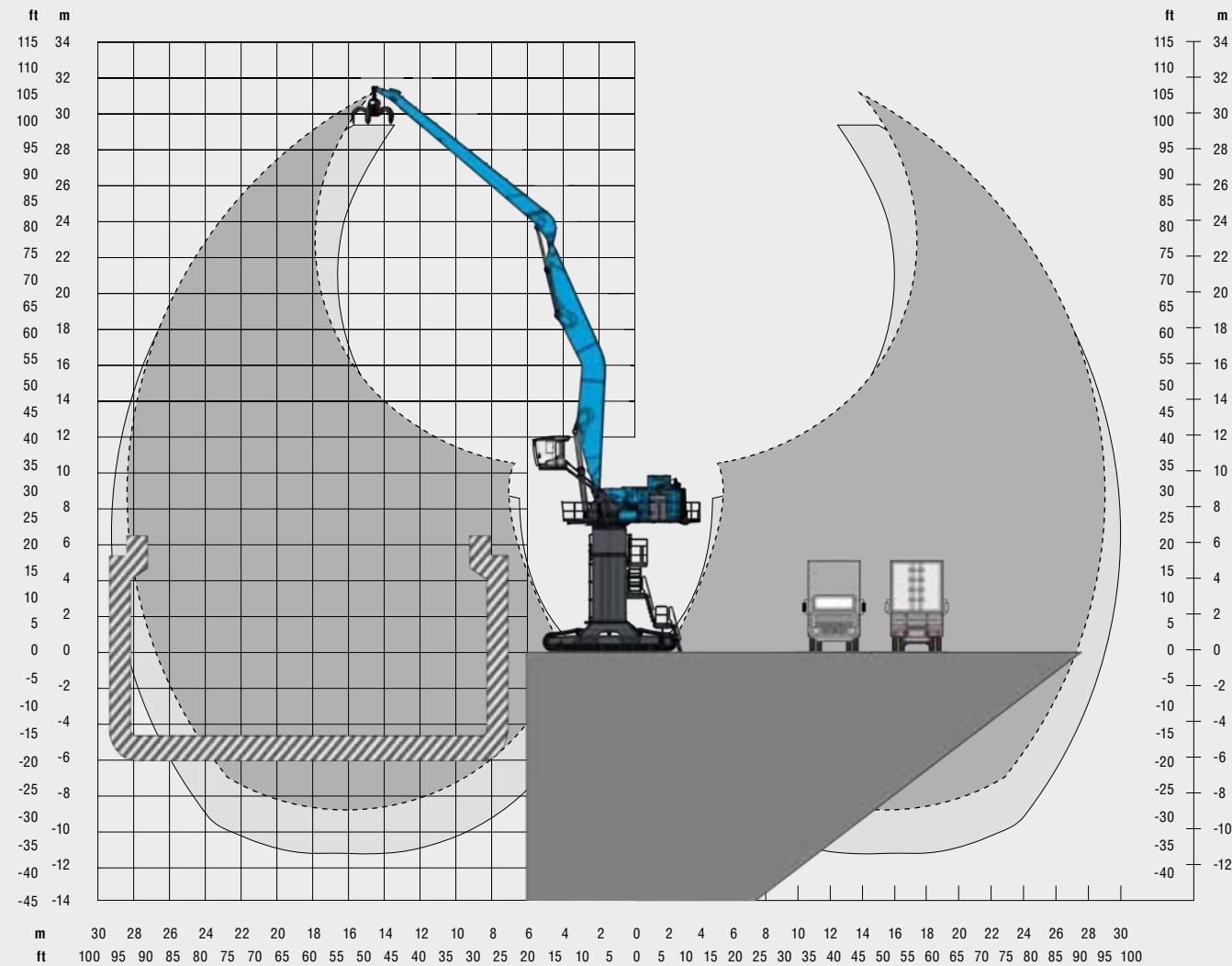
- **LOADING EQUIPMENT: 91'10" (STRAIGHT BOOM)** • **CABIN: VERTICALLY AND HORIZONTALLY ADJUSTABLE** • **VIEWING HEIGHT: 39'4"** • **UNDERCARRIAGE: CRAWLER + PYLON**



F120MH

Application Example (Gantry)

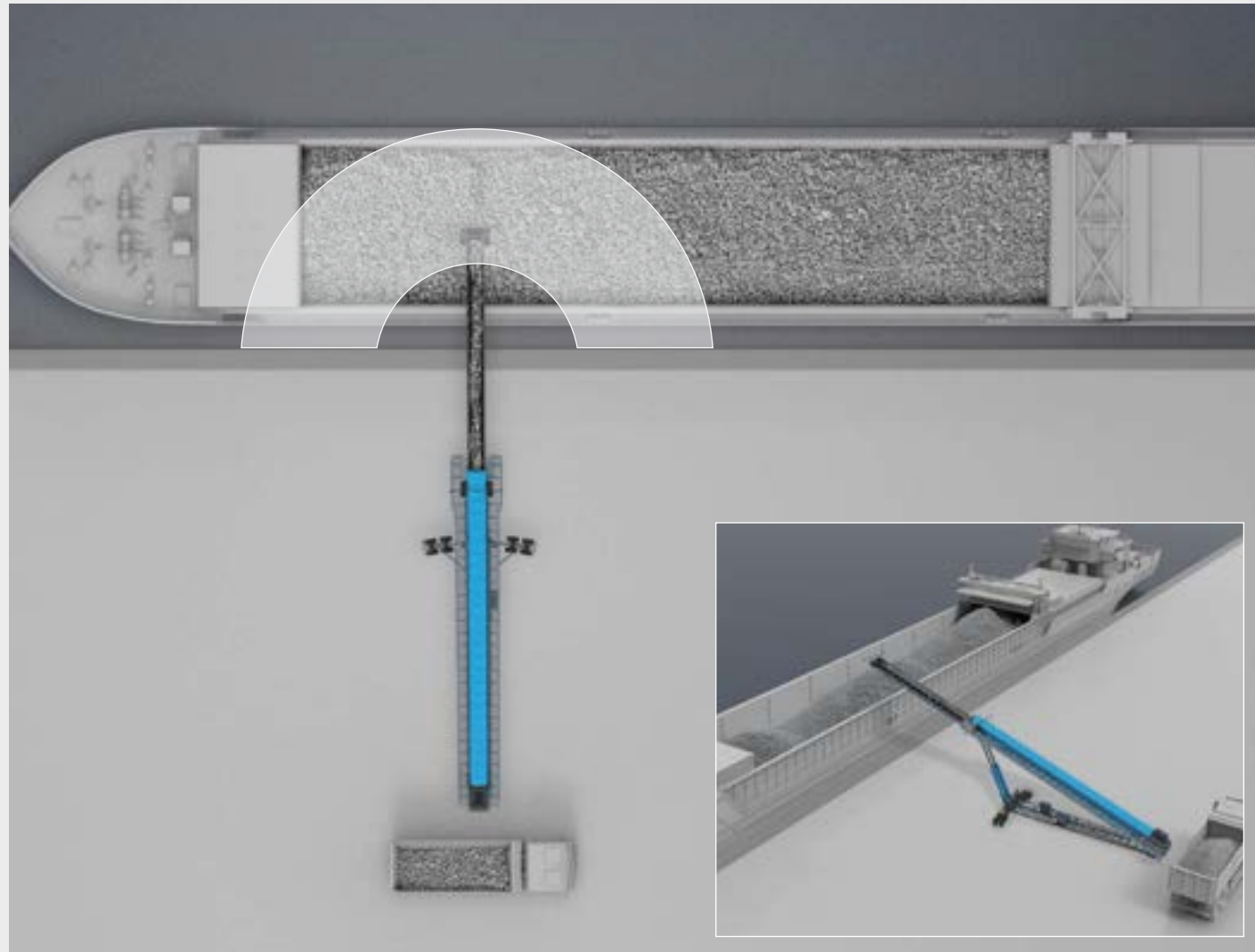
- **LOADING EQUIPMENT: 88'7" (STRAIGHT BOOM)** • **CABIN: VERTICALLY AND HORIZONTALLY ADJUSTABLE** • **VIEWING HEIGHT: 39'4"** • **UNDERCARRIAGE: GANTRY**



TELESCOPIC CONVEYOR

Application Example

FUCHS PORT LINE FEATURES THREE SPECIFICATIONS THAT ARE CAPABLE OF 270° OF RADIAL MOVEMENT AND UP TO 22° WORKING ANGLE.



TELESCOPIC CONVEYOR VARIANTS AVAILABLE FOR DIFFERENT APPLICATION REQUIREMENTS



Telescopic Conveyor
TCW 42

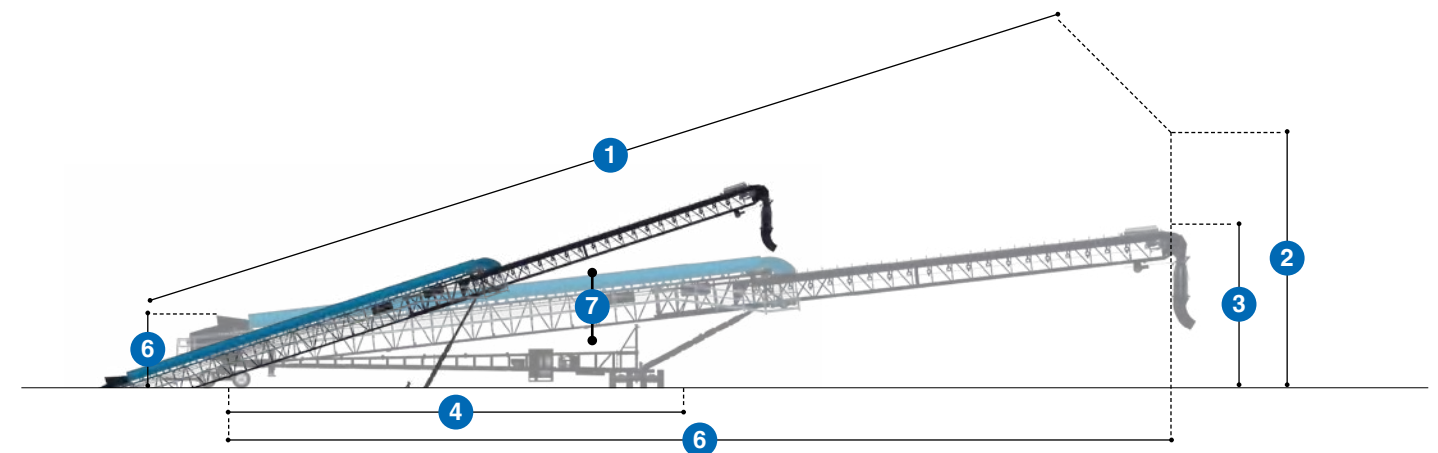


Telescopic Conveyor
TCW 52



Telescopic Conveyor
TCW 58

	TCW 42 140 ft	TCW 52 170 ft	TCW 58 190 ft
1 Conveyor Length	140'	170'	190'
2 Max. Discharge Height (Extended)	47'	59'11"	63'9"
3 Min. Discharge Height (Extended)	22'11"	35'11"	39'4"
4 Chassis Length (Kingpin to Swing Axle)	60'2"	73'8"	73'9"
5 Maximum Reach (Kingpin to Discharge point)	130'10"	155'9"	175'8"
6 Feed In Height	9'1"	11'5"	12'7"
7 Operational Angle Range (Degrees)	8°-18°	8°-18°	8°-18°
8 Operational Width	22'4"	34'5"	34'5"



TELESCOPIC CONVEYOR



FEEDER VARIANTS AVAILABLE FOR DIFFERENT APPLICATION REQUIREMENTS



Bulk Reception Feeder
RF 22

This Heavy Duty Bulk Reception Feeder allows for the highest level of productivity and efficiency for loading and unloading trucks, ships, trains and more.

	RF 22
Conveyor length	56'
Belt width	72"
Min. Discharge height	11'6" @ 15°
Max. discharge height	15'3" @ 21°
Production capacity	1650 STPH @ 1600 kg/m³



High Level Feeder
MF24H

Combines the highly versatile feeder system and stockpiling conveyor.



Low Level Feeder
MF24L

Allows the operator to directly discharge from wheel loaders and excavators at a significantly lower feed in height compared to standard hopper feeders.

	MF24H High Level	MF24H Low Level
Conveyor length	73'10"	73'10"
Feeder length	13'11"	13'11"
Belt width	48"	4'3"
Discharge height	26'3" @ 18°	26'3" @ 18°
Max. discharge height	32'2" @ 24°	32'2" @ 24°
Production capacity	Up to 661 US TPH	Up to 661 US TPH

PROFESIONAL CUSTOMER SUPPORT

Anyone who opts for first-class products can also expect first-class service before and after making a purchase. At Fuchs, not only are the loading machines optimally tailored to the needs of the customers, but the services are too. So you can be sure that your Fuchs loading machine will provide you with the reliability you need.

A regularly trained team of service specialists, comprehensive technical documentation and useful online tools through to mobile service containers support our distributors worldwide in the fast and competent implementation of assembly, maintenance and repair work. In urgent cases, a hotline and service websites are available to the service partners outside of normal business hours.

EDUCATION, TRAINING AND WORKSHOPS

The Fuchs global service network is the interface between distributors and the manufacturer. Highly qualified consultants and technicians are available to users to answer all questions about the Fuchs loading machines. They are supported by a sophisticated training and workshop programme in the Fuchs training centre, which is used by hundreds of international participants every year. Our professionally trained service technicians maintain contact with the service partners and support them in solving particularly demanding tasks.

FAST SPARE PARTS SERVICE

If help is needed it has to happen quickly. That is why the Terex has set up state-of-the-art spare parts warehouses around the world, which dispatch tens of thousands of shipments per year. Thanks to the Terex Connected Dealer Inventory System, all of our participating business partners have access to hundreds of thousands of spare parts worldwide.



MODULAR SYSTEM

ATTACHMENTS



Cactus grab



Timber grapple



Clamshell grab



Load hook

WORK EQUIPMENT



Straight



Banana Boom

UNDERCARRIAGES



Standard-undercarriage



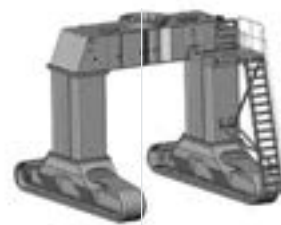
Standard-undercarriage with Pylon



Crawler



Crawler



Gantry



AHL Standard-undercarriage



AHL Pylon

CAB SYSTEMS

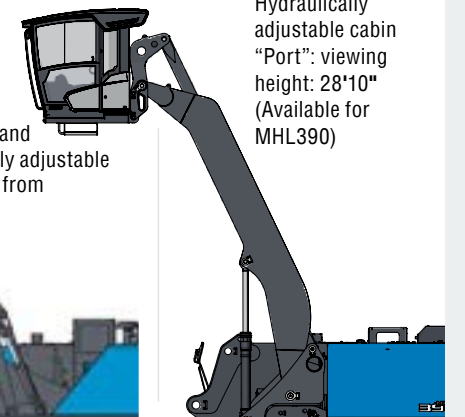
Vertically adjustable



Vertically and horizontally adjustable
(Available from MHL360)



Hydraulically adjustable cabin
"Port": viewing height: 28"10"
(Available for MHL390)



ENGINES



Diesel engine



Electric motor

OPTIONS



Cable reel



Cable drum



www.terex.com/fuchs

April 2026. Product specifications and prices are subject to change without notice or obligation. The photographs and/or drawings in this document are for illustrative purposes only. Refer to the appropriate Operator's Manual for instructions on the proper use of this equipment. Failure to follow the appropriate Operator's Manual when using our equipment or to otherwise act irresponsibly may result in serious injury or death. The only warranty applicable to our equipment is the standard written warranty applicable to the particular product and sale and Terex makes no other warranty, express or implied. © Terex Corporation 2026 - Terex, the Terex Crown design, Fuchs and Works For You are trademarks of Terex Corporation or its subsidiaries.

Terex® Deutschland GmbH | Industriestraße 3 | 76669 Bad Schönborn | Germany | Fon: +49 (0) 7253 84-0 | Fax: +49 (0) 7253 84-102 | info@terex-fuchs.com

