

US

E-DRIVE



ELECTRIC MATERIAL HANDLERS

ZERO EMISSIONS | LOW ENERGY CONSUMPTION | OPTIMUM SAFETY



FUCHS
A TEREX BRAND

FUCHS ELECTRIC DRIVE



ZERO EMISSIONS

- No exhaust gases
- Significantly reduced noise and heat output
- Ideal when operating indoors or close to residential areas



LOW MAINTENANCE COST

- More efficient working hours
- Reduced operating costs
- Up to 60% savings compared to diesel-driven machines



SAFETY

- Constant monitoring of electrical network quality and machine grounding
- Automatic disconnection of main switch if network error is detected
- Emergency STOP button in the cabin

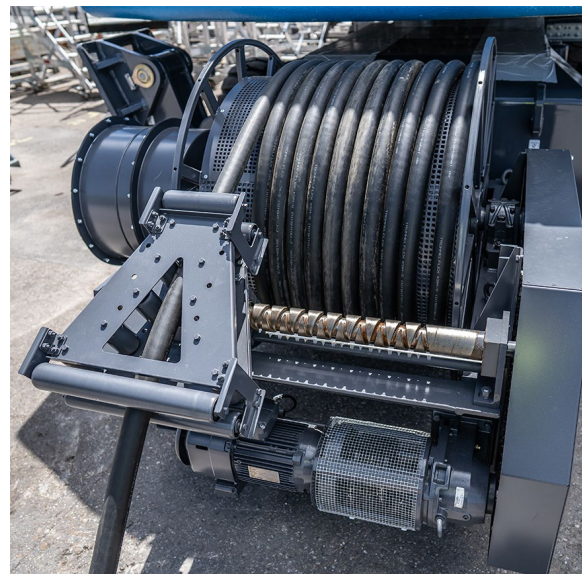


CONFIDENCE WITH FUCHS STANDARD FEATURES

- A Soft Start facilitates the smooth starting of the motor without glitches or jerks, extending the life of the electric motor, and reducing motor heating with frequent starts and stops
- Efficiency class IE3 according IEC 60034-30
- Outstanding durability/longevity

CABLE REEL SYSTEMS

ROBUST AND RELIABLE FOR WASTE, SCRAP
AND PORT APPLICATIONS



CABLE REEL*

EXPANDING THE WORKING RADIUS AND
INCREASING THE FLEXIBILITY

- Up to 164 ft **
- Precise and controlled cable routing
- Cable monitoring to prevent cable tearing
- Automatically driven by an electric motor
- Maximum flexibility
- Cost effective solutions for your individual application



TWIN CABLE REEL FOR XL UNDERCARRIGE*

- Up to 295 ft**
- With frequency converter
- Manually operated via remote control
- Galvanized reel for an improved corrosion protection
- Cable monitoring to prevent cable tearing



PLUG & CABLE DRUM*

- Easily switch between cable reel or directly plug in to power network
- Multiple connection options for more flexibility



TENSION RELIEF BRACKET

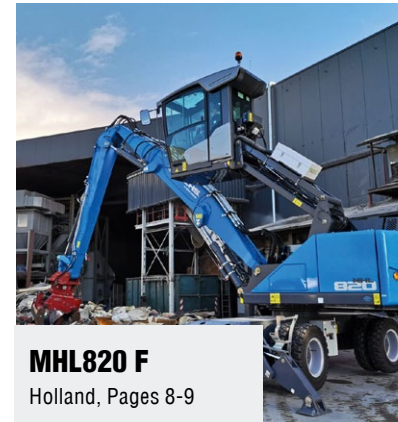
- Standard
- Reliefs tension from the cable
- Provides clearance from the undercarriage

* Option

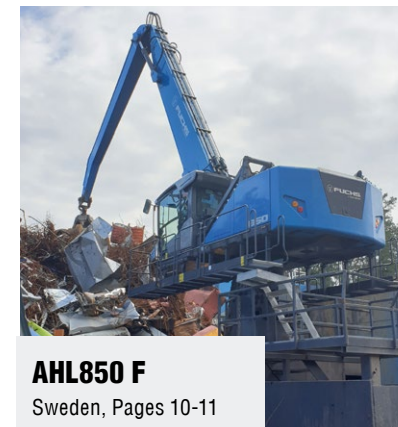
**Other cable reel types and cable lengths on request

ELECTRIC MATERIAL HANDLERS

PROVING THEMSELVES IN A VARIETY OF
APPLICATIONS AROUND THE WORLD



MHL820 F
Holland, Pages 8-9



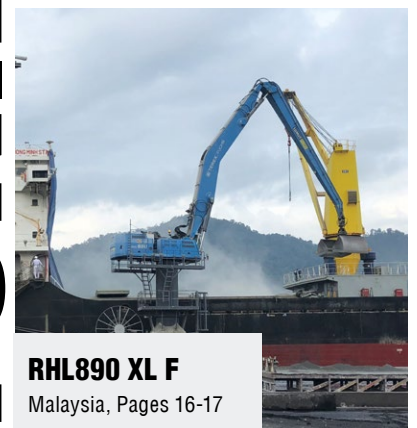
AHL850 F
Sweden, Pages 10-11



MHL850 F
Poland, Pages 12-13



MHL870 F
Germany, Pages 14-15



RHL890 XL F
Malaysia, Pages 16-17



MHL850 F
Poland, Pages 12-13

JOB STORIES

MHL820 F



75 kW



max. 50,706 lbs



33'6"

EMISSION-FREE, EFFICIENT AND SAFE

MHL820, the fifth Fuchs material handler by Van Dijk Containers, is used for feeding a carpet shredder. With just limited mobility needed for the task, the MHL820 with its cable reel and integrated power-pack was the right solution. The zero-emissions electric motor generates a high torque, emits limited noise and heat, which makes it also suited for inside industrial buildings. Another benefit of this maintenance-friendly electric Fuchs materials handler is low operating and servicing costs.



ELECTRIC MOTOR Low operation and service costs

Oil changes, servicing of the moving parts of a diesel engine and refuelling are no longer necessary – this leads to more efficient working hours and reduced operation and service costs.

COMPACT DIMENSIONS Right machine for limited space

With a reach of 33'6" and an operating weight of 50,706 lbs the MHL820 is perfectly suited when power is needed but space is limited.

CAB Comfort Cab standard with Fuchs

The Fuchs Comfort Cab has been specially designed for material handling and is standard on all Fuchs machines.



CABLE REEL Right connection, every single time

The single cable reel with 164 ft of cable is especially designed for reliable power supply and long service life. The cable is automatically winding and unwinding itself safely without any need for another person to route it



POWER-PACK (INTEGRATED) When it's time to move

A diesel set with an output of 31 hp is installed directly in the machine and is used for longer trips (to the workshop or another work location).



PRESSURIZED CAB Healthy workplace for operator

Pressurized cab system protects the operator from outside pollution. The air enters the cab via a filter package, ensuring the operator breathes filtered air while inside the cab.

DEALER:

Van der Spek

CUSTOMER:

Van Dijk Containers

LOCATION:

Genemuiden, the Netherlands

Recycler Van Dijk Containers is more than 100 years old, has three depots, with the main location being in the carpet city of Genemuiden, on the Zwarte Meer inland sea. The company is a professional environmental centre where all types of waste can be disposed of: building rubble, paper, green and garden waste, plastic, wood, carpet and textile waste, glass, asbestos, and residual waste.



We are very satisfied with this machine. Less noise, and no drops of engine rpm during operation, compared to diesel-driven machines. Additionally, we've noticed significant savings on the cost of energy and on maintenance expenditure.

Jan van Dijk, CEO at Van Dijk Containers



AHL 850 F



132 kW



max. 61,730 lbs



55'9"

ENVIRONMENTALLY FRIENDLY

Daniel Lantz started his scrap business on a rented piece of land at another scrap yard in 1968. Today the company has seven recycling yards and also owns Tierps Järnbuck, a cast iron rolling mill with a long history. The first new machine Lantz Järn & Metalle AB bought in 2002 was a Fuchs MHL350 FQC from Kiesel Skandinavia. Kiesel Skandinavia has been able to build up a good business relationship with Lantz Järn & Metalle AB over the years, during which time the company has invested in additional 28 Fuchs material handling machines.



RELIABLE, ECONOMICALLY EFFICIENT AND ENVIRONMENTALLY FRIENDLY WERE THE CUSTOMER'S REQUIREMENTS

When Lantz Järn & Metall AB needed an additional material handling machine to fill the 1763,698 lbs (800-ton) scrap press, the company once again got together with their Fuchs dealer to find the optimal solution. The goal was a long-term solution that was reliable, economically efficient and environmentally friendly. All this and more is fulfilled by the Fuchs pylon-mounted electric machine AHL850 F. The machine is equipped with a 6'7" pylon and mounted on a solid concrete foundation, giving the operator a great overview of about 27'10". The 132 kW electric motor ensures not only minimum operating costs, but also high savings on service costs.



REMOTE CONTROL Possibility to work from two locations

An remote operator seat with all operating equipment is located in the shear stand. The operator can work either from the shear stand or from the Fuchs cabin.



CATWALK Convenient access to cabin

The catwalk is an important option not only to improve the convenient access to the cabin, but also to protect operators against falls, especially on pylon-mounted machines.



BOOM CYLINDER DAMPING SYSTEM Max comfort for long working hours

The boom cylinder damping system automatically reduces the vibration level of loading equipment, giving operators better comfort, safety and productivity.

DEALER:

Kiesel Skandinavia

CUSTOMER:

Lantz Järn & Metall AB

LOCATION:

Sollentuna, Sweden

Since the company was founded in 1998, Lantz Järn & Metall AB has recycled scrap from private and industrial suppliers. Over the years, Lantz Järn & Metall AB has received several awards for its environmentally friendly recycling process and has been certified by industry-specific groups who intend to monitor business operations' work with environmental issues.



As our company is constantly striving to reduce operating costs and becoming as environmentally friendly as possible, the electrically driven Fuchs AHL850 F is the right machine for us. It is our second electric machine since purchasing the Fuchs MHL820 D, which has been in our wire processing hall since 2013 and with which we are very satisfied. Our machine operator appreciates the sensitive hydraulics, the lifting power and the comfort of the new cabin on the F series.

Daniel Lantz , CEO at Lantz Järn & Metall AB



MHL 850 F



132 kW



max. 83,776 lbs

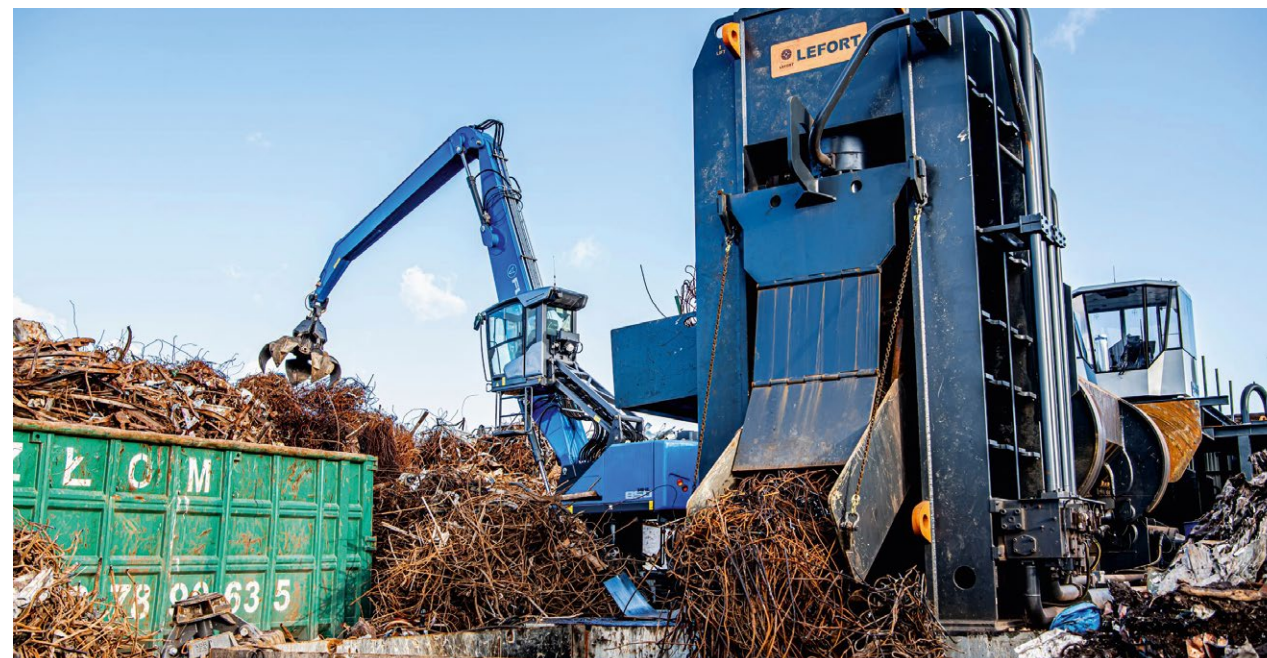


52'6"

THE FUCHS BRAND WAS THE RIGHT DECISION

In October 2018, Holdmar decided to expand its equipment fleet with a Fuchs electric machine MHL850. The electric Fuchs was planned for feeding a Lefort scrap shear, one of the largest in Poland with a cutting power of up to 2755,778 lbs (1250 t).

The company bought their first Fuchs material handler in 2004, a used Fuchs 713. "We didn't choose the brand by accident. Driving around various scrap yards in Poland, I've seen Fuchs material handlers everywhere. The first Fuchs 713 is still doing a good job today - it was the right decision," said Sławomir Szymański, company owner. Since 2004 the company has bought five more Fuchs material handlers: three MHL340, one MHL331 latest machine is the electrically driven Fuchs MHL850 with 2'8" pylon and 52'6" reach.



PYLON More visibility

The 2'8" pylon enables not only high stockpiling of scrap, but improves visibility, which is particularly important for the correct placement of the material in the scrap shears.



FUCHS BESTSELLER Since 1991

With its substantial reach of 52'6" and high load capacity, the MHL350 is one of the top scrap models in the world. Since its launch in 1991, the MHL350 is our most popular scrap material handler worldwide.



SERVICE PLATFORM Standard with all sizes

The Fuchs service platform makes daily checking of the equipment safe and easy. From one point in the platform, the operator has access to all important components like the electric motor, filters, hydraulic control block, grease container, oil level glass, manifold strip etc.



EMERGENCY STOP BUTTON Easily accessible

Emergency stop button is provided as standard on all Fuchs electric machines and located in the cabin to be easily accessed by the operator.



DEMOUNTABLE POWER-PACK One for all Fuchs electric fleet

The power-pack is mounted on the counterweight. Using a forklift, customers can easily use the Power Pack for other Fuchs electric material handlers in the future.



SINGLE CABLE REEL Flexibility every time

Automatic winding of cables prevents damage to the cable. The operator gets a sound alert as well as a visual warning that the reel is almost empty, to prevent cable tearing.

DEALER:

PAKIET

CUSTOMER:

Holdmar

LOCATION:

Otwocku, Poland

Holdmar, founded in 1993 by Sławomir Szymański, started with the buying and selling of scrap to steelworks. Over the years, the company has extended its activities from scrap buying to complete disassembly of used cars. Thanks to hard work, perseverance and continued investment, Holdmar is now an important player in the Polish scrap market.



I enjoy the comfort of the Fuchs cab and together with the the large windows, it offers me a perfect view. This excellent visibility along with the Fuchs light system ensures optimal job site safety - even in the darkness. The additional window on the roof offers me perfect control during loading operations. Moreover, I appreciate the excellent cab stability in the highest position and sensitive hydraulics of Fuchs F Series.

Tomasz Szczycinski, operator at Holdmar



MHL 870 F



QUICK AND PRECISE

The MHL870 F is the third Fuchs machine purchased by Schrott Wetzel Group. The first two Fuchs machines were two MHL360, responsible for all kinds of scrap handling work such as sorting, loading and unloading of lorries, wagons and ships, stockpiling. As the factory needed an additional machine for different tasks, mostly for shear feeding with 110,231 lbs (50 t) /hour capacity, the company once again asked their dealer to find the optimal solution. As only limited mobility of 82 ft was needed, the MHL870 was the perfect solution.



”

As an operator I really appreciate the spaciousness and comfort of the Fuchs cab. Anyone who has jumped inside a tiny cab knows the feeling of being cramped and tired - even only after a couple of hours. In a Fuchs cab, I don't notice the long 9-hour shift. In addition, the large front window built as one piece with the big side and rear windows provide a great 360-degree view without turning the machine. The possibility to adjust grab rotation via the display monitor makes my work flexible depending on scrap type.

Simon Pfliegendörfer Operator of MHL870



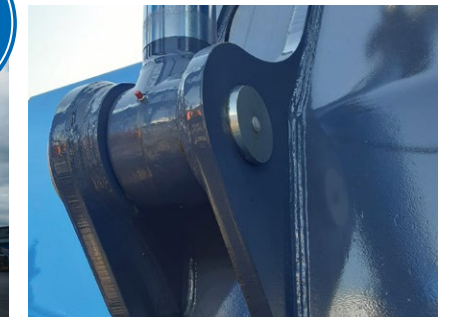
> **CATWALK** Safe and easy access

A wide catwalk and large handrails ensure safe and easy access to the cab located 13'9" high as well as easy access to the maintenance check points.



> **PYLON** Enormous viewing height

The viewing height of 27'9" provides an exceptional birds eye view into shear.



> **DUAL-EAR PIN CONNECTION** Good solution for cylinder fixation

A great standard feature is the dual-ear pin connection by boom and stick cylinders, which provides better cylinder fixation and easy replacement compared to one long pin.

DEALER:

Kiesel GmbH

CUSTOMER:

Schrott Wetzel Group

LOCATION:

Mannheim, Germany

A family company established in the early 50s, Schrott Wetzel Group is now a market-leading provider of scrap metal preparation and processing. Today the company employs about 200 people and processes roughly 1 million tonnes of different grades of scrap metal. This also involves dealing responsibly with raw materials which are now in limited supply, and therefore is now more than ever the duty of any forward-thinking company.

”

This machine deals perfectly with different daily tasks including precise scrap presorting and quick shear feeding (shear capacity 110,231 lbs/hour). The most important benefit for me as a factory manager is the enormous savings of operating costs.

Sascha Kraus, Factory Manager in Mannheim



RHL880 XL F



250 kW



max. 211,644 lbs



78'9" banana boom

RHL880 XL- THREEFOLD HANDLING PERFORMANCE

In 2018, the Fuchs factory was proud to deliver three electric driven RHL880 XL and four diesel driven MHL350 F to Lumut Port in Malaysia. The main task is to unload and load bulk goods from vessels. The machines operate by unloading – up to 10k DWT vessels and by loading – up to 20k DWT vessels. Due to the 24 hour non-stop port operation, the Fuchs material handlers work about 20 hours daily.



ELECTRIC MOTOR

Low owning and operating costs

The Fuchs MHL880 XL material handlers are powered by a 250 kW electric motor with soft start as standard.



XL UNDERCARRIAGE

Great stability and mobility

The electric machines are mounted on an XL track undercarriage with 20'8" width and 22'12" height. Thanks to its extra large support base, the machine is perfectly stable. A twin cable reel allows up to 295 ft of travel from the energy source.



CABIN SYSTEM

Excellent visibility

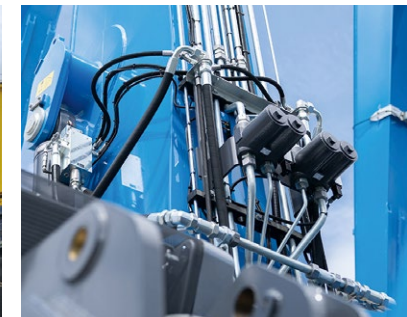
The cabin can be hydraulically extended or raised to eye level of 37'9", therefore the operator has excellent visibility of unloading or loading a ship.



CATWALK

Safe access

Durable anti-slip surfaces provides additional safety in dusty and humid applications.



FUCHS FILTRATION SYSTEM

High pressure Fuchs Filtration System can prevent failures caused by contamination from attachment return oil. The system warns the operator via the display monitor when the filters are clogged. Filter elements can be easily changed.



FLAT TRACK SHOES

32" wide flat track shoes exert a minimum amount of ground pressure, even while handling large loads.

CUSTOMER:

Lumut Port

LOCATION:

Sitiawan, Perak, Malaysia

Lumut Port is strategically located off the Straits of Malacca, on the west coast of Peninsular Malaysia, in Perak.

Facts and numbers:

- In 2018 Lumut Port was awarded for Best Specialist Dry bulk Port/ Terminal
- 500+ ships per year
- The most productive bulk port in Malaysia
- 100+ acres of coverage area
- 24 hours non-stop operation



With our three Fuchs RHL880 XL port machines we were able to increase our handling performance near threefold in comparison to our conventional method, where we used conveyors to load vessels. With our Fuchs material handlers we can now serve more clients and increase our revenue tremendously.

Mr. Mubarak CEO at Lumut Port

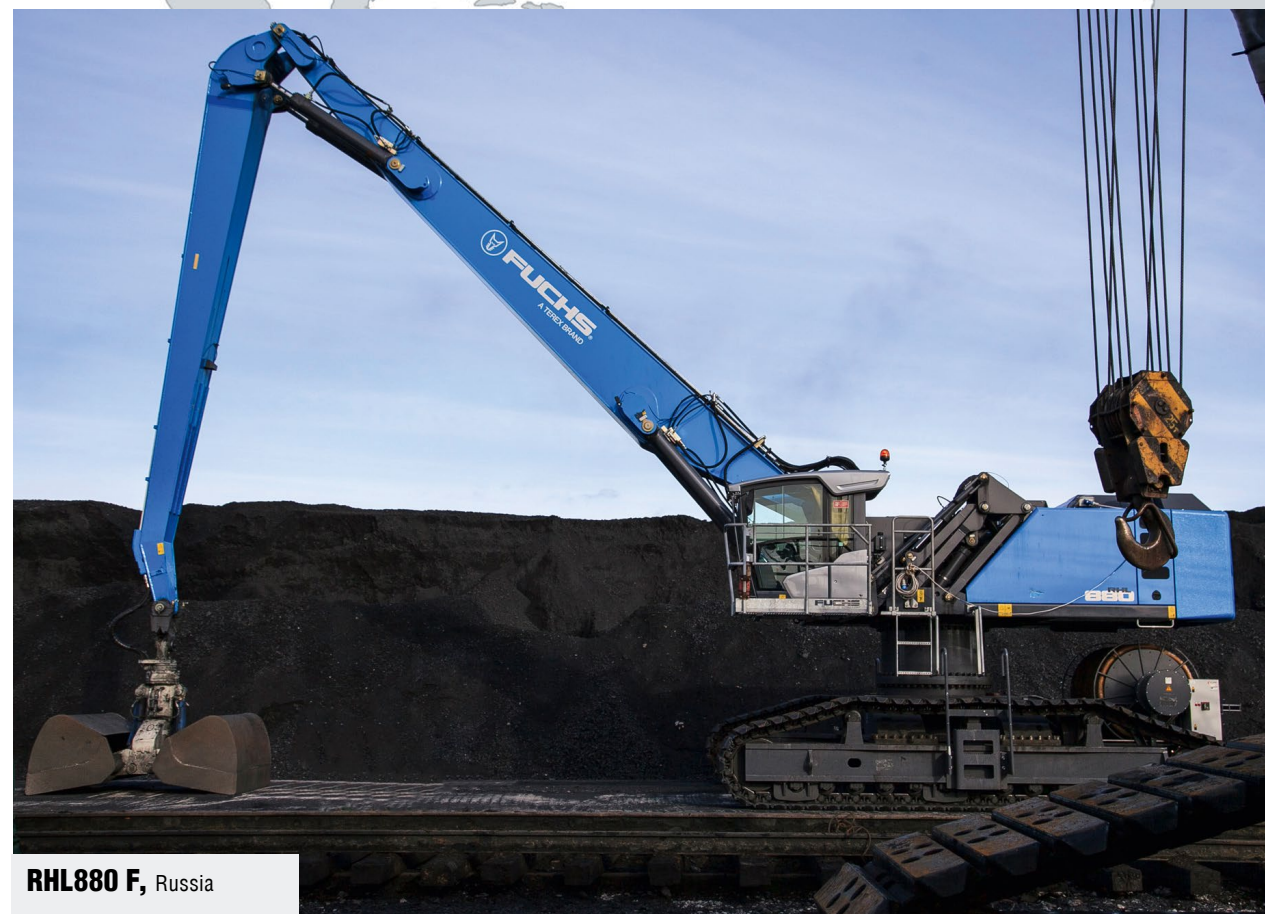




MHL860 F, the Netherlands



MHL850 F, Poland



RHL880 F, Russia



MHL870 F, Germany

FUCHS POWER PACK

- Exhaust emissions standard U.S. Tier 4 / EU Stage V
- Available for full range of Fuchs electric machines, one size fits all
- Tested and certified to provide high safety standards

The Power Pack offers electric-driven material handlers more flexibility, with the option to be driven from one power socket to the other independently of any external electricity supply. This is made possible by an integrated diesel-powered hydraulic unit.



➤ **MOBILE POWER-PACK**
Using a forklift or a chain sling, the Power Pack is easy to mount on all Fuchs electric material handlers. This Power Pack can be used with every Fuchs electric machines

➤ **INTEGRATED POWER-PACK**

- fully integrated, the swing radius of the machine stays the same
- power on demand

The Power Pack covers the full range of Fuchs machines, from the MHL310 to the MHL390; from a 35,300 lbs recycling machine to a 242,500 lbs material handler for port logistics. The power unit is equally suitable for tracked machines.

The Power Pack comes with an easily accessible maintenance cover, providing additional convenience on the rare occasion when a service is needed.

The high-performance diesel engine (U.S. Tier 4 / Stage V) contained within the Power Pack operates entirely independently of the machine.

GREAT FEATURES

COME STANDARD WITH YOUR ELECTRIC FUCHS

**ELECTRIC MOTOR
EFFICIENCY CLASS IE3**



CONTROL CABINET



RING COLLECTOR



7" MULTI-FUNCTION DISPLAY



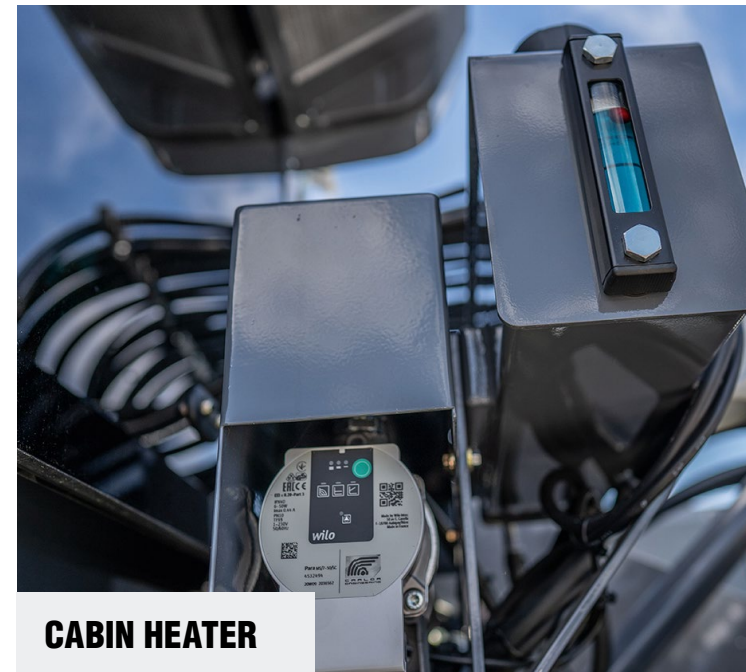
**EMERGENCY STOP
BUTTON IN THE CABIN**



**POWER FEED BOX WITH
MAIN SWITCH**



CABIN HEATER



SOFT START





www.terex-fuchs.com

August 2021. Product specifications and prices are subject to change without notice or obligation. The photographs and/or drawings in this document are for illustrative purposes only. Refer to the appropriate Operator's Manual for instructions on the proper use of this equipment. Failure to follow the appropriate Operator's Manual when using our equipment or to otherwise act irresponsibly may result in serious injury or death. The only warranty applicable to our equipment is the standard written warranty applicable to the particular product and sale and Terex makes no other warranty, express or implied. © Terex Corporation 2021 - Terex, the Terex Crown design, Fuchs and Works For You are trademarks of Terex Corporation or its subsidiaries.

Fuchs USA | Louisville, KY 40299 | USA | Phone: +1 610-763-7867 | sales.fuchsus@terex.com

