

Preliminary

# F120 MH



469 hp



280 kW



201 hp



264,500– 330,700 lbs



88'6"



**FUCHS**<sup>®</sup>

A TEREX BRAND

TECHNICAL DATA

Service weight without attachment			
F120 MH	264,500– 330,700 lbs		
Diesel engine			
	U.S. Tier 4	EU Stage V	EU Stage IIIA/ U.S. Tier 3*
Manufacturer and type	Deutz TCD 12.0 V6	Deutz TCD 12.0 V6	Deutz TCD2015 V06
Design	6-cylinder V engine	6-cylinder V engine	6-cylinder V engine
	4-stroke diesel, common rail open-combustion-chamber injection, turbocharger, controlled exhaust gas recirculation, diesel particle filter with continuous regeneration and SCR catalytic converter	4-stroke diesel, common rail open-combustion-chamber injection, turbocharger, controlled exhaust gas recirculation, diesel particle filter with continuous regeneration and SCR catalytic converter	4-stroke diesel, common rail direct fuel injection, turbocharger with charge air cooling
Engine power	469 hp	469 hp	469 hp
Nominal speed	1800 min <sup>-1</sup>	1800 min <sup>-1</sup>	1800 min <sup>-1</sup>
Displacement	732 cui	732 cui	732 cui
ECO mode	Economical operation with reduced engine speed and high torque		
POWER mode	Maximum power always available on demand		
Cooling system	Spatially separated high-performance engine cooler with thermostatic control of fan speed, automatic, programmable reversible fan		
Air filter	Dry air filter with pre-separator, main and safety element		
Fuel tank (uppercarriage)	449 gal Diesel	449 gal Diesel	449 gal Diesel
Urea tank	27.7 gal DEF	27.7 gal DEF	–
Blue Hybrid System max.	201 hp	201 hp	201 hp
System performance max.	670 hp	670 hp	670 hp
Electrical system			
Alternator	28 V / 110 A	28 V / 110 A	28 V / 110 A
Operating voltage	24 V		
Battery	2 × 12 V / 110 Ah / 750 A		
Switch cabinets	Heavy-duty design, lockable		
Lighting	2 × LED headlights at the front of the machine, rear marker and blinker lights, 2 × Power LED cab at the front, 1x Power LED cab at the rear, 1x Power LED boom, 1x Power LED Dipperstick, 1 x Power LED Uppercarriage center (gantry)		
Electric motor			
Type	Three-phase asynchronous motor		
Power	280 kW		
System power	430 kW		
Total connected load	304 kW		
Mains connection	L1 / L2 / L3 / PE		
Engine startup	Soft starter		
Operating voltage	400V / 50 Hz or 480V / 60 Hz (USA)		
Optional cable drum	Up to 50 meters (other lengths on request)		
Swing drive			
	Enclosed, energy-efficient swing drive with independent pump for energy recovery. Dynamic and apportionable, largely unaffected by other work functions. Swivel lock via joystick or touch display.		
Slew ring	Largely dimensioned, internally toothed, multi-row roller slewing ring, lubrication by automatic central lubrication system		
Drive	Reversible axial piston pump, 2-stage planetary gear with integrated multi-disc brake		
Uppercarriage swing speed	0–5,4 rpm <sup>-1</sup>		
Swivel lock	Electrically operated		

\* for markets with little regulation

TECHNICAL DATA

Undercarriage			
Crawler			
Floor plates	Customized		
Travel speed	1.2- 2.4 mph		
Travel drive	Hydraulic, planetary gearbox with axial piston motors		
Crawler undercarriage	Virtually maintenance-free		
Gantry			
Floor plates	Customized		
Travel speed	≤ 1.2 mph		
Travel drive	Hydraulic, planetary gearbox with axial piston motors		
Crawler units	Virtually maintenance-free		
Mobile			
Customized			
Hydraulic system			
Regulation and control	Mobile hydraulics with Load Sensing System for pre-controlled work functions. Electronic load limit control and fuel-efficient, demand-oriented oil quantity regulation.		
Hydraulic pumps	Axial piston variable displacement pumps		
Max Delivery rate	269 gpm for equipment and chassis, 90 gpm for the swing drive		
Max. Working pressure	4,641 psi / 5.221psi (main pump)		
Mode selection			
Precision mode	Move loads precisely		
Heavy mode	Movement of heavy loads		
Hydraulic oil tank	215 gal		
Filtering	Flow-optimized return line filter, integrated in the oil tank. Filter fineness defined at a beta value β(10) = 200 guarantees 99.5% separation of dirt particles with 10 µm. Very good separation values are already achieved with particle sizes of 3µm. Generously dimensioned for long operating times. Permanent monitoring of oil cleanliness by quality sensor		
Cooling system	Spatially separated high-performance cooler with thermostatic control of fan speed, automatic, programmable reversible fan		
Boom and stick cylinders	Robust special cylinders with generously dimensioned bearing points, end position damping and rupture safety valves with regeneration function		
Hybrid cylinder	Robust cylinder with generously dimensioned bearings, rupture safety valve and end position damping		
Tool control	Settings for attachments adjustable via display		
Cab			
Cab	Comfort cab with sliding door, reinforced steel structure, soundproofed, heat-insulated panoramic windows for best all-round visibility, front window with roller blind, viewing window in the cab roof with sliding blind, multifunction color display with touch function. Wide range of storage and mounting options		
Climate control	Automatic climate control with recirculation function. Fresh and circulation air filters. Water heater with infinitely variable temperature adjustment and 8-speed fan, 10 adjustable air nozzles, 3 defroster nozzles, separate heat exchangers, fresh and circulation air filters		
Driver's seat	Air-cushioned comfort seat with swinging armrests / joysticks, seat belt, lumbar and headrest. Allows fatigue-free work thanks to universal adjustment options for the seat position, seat tilt and the arrangement of the seat cushion in relation to the armrests and joysticks		
Monitoring	Ergonomically arranged, glare-free instrumentation, multifunction display, automatic monitoring and storage of deviating operating states (including all hydraulic oil filters, hydraulic oil temperature, coolant and charge air temperature, loading of diesel particulate filter, steering). Visual and acoustic warning systems. Diagnostic option for the individual sensors via the multifunction display		
Screen wiper	Large parallel wiper for front field of vision, including washer - wiper motor outside field of vision		
Sound level	U.S. Tier 4	EU Stage V	EU Stage IIIA/ U.S. Tier 3*
(metered) acc. to directive 2000/14/EG		L <sub>WA</sub> 105,5 dB(A)	
(guaranteed) acc. to directive 2000/14/EG		L <sub>WA</sub> 107 dB(A)	
(inside the cabin) acc. to directive ISO 6396		L <sub>pA</sub> 70 [dB(A)]	
Vibration	Weighted rms value of upper limb acceleration: below 2,5 m/s² Weighted effective value of acceleration for the seat and feet: below 0,5 m/s²		
Certification according to CE Directives			
Voluntary DGUV type examination			

EQUIPMENT

Diesel engine	Standard	Option
Large mesh water / air cooler	●	
Spatially separated high-performance cooler with thermostatic demand control of fan speed	●	
Reversible fan, automatic, cycle time programmable	●	
Electronic direct injection / common rail	●	
DEF injection, passive regeneration	●	
Advanced automatic idling with engine shutdown function	●	
ECO and POWER mode	●	
Engine diagnostic interface	●	
Heated diesel pre-filter with automatic temperature control	●	
Level monitor for cooling water level	●	
Cyclone prefractioner for air filter		●
Extended oil service interval	●	
Engine compartment lighting	●	
Mobile undercarriage		
Customized		●
Gantry undercarriage		
Low maintenance crawler undercarriage	●	
Refueling pump for auxiliary tank on undercarriage		●
Additional fuel tank 792 gal diesel		●
Floor panels according to customer requirements		●
Crawler undercarriages		
Low maintenance crawler undercarriage	●	
Floor panels according to customer requirements		●
Uppercarriage		
Blue Hybrid System	●	
Large service platform	●	
Maintenance flaps made of sheet steel with gas spring	●	
Spatially separated high-performance cooling system for hydraulic, engine and air-conditioning system	●	
Reversible fan hydraulic oil cooler, automatic, cycle time programmable	●	
Automatic central lubrication system	●	
Service crane		●
Light protection		●
Catwalk		●
Catwalk, circumferential		●
Monitored butterfly valve between pump(s) and hydraulic oil tank	●	
Level monitor hydraulic oil level	●	
Cab		
Fuchs comfort cab	●	
Large port/ marina comfort cab		●
Elevating cab system	●	
In and out cab		●
Cab to ground (for gantry or pylon undercarriage)		●
Toughened safety glass (ESG)	●	
Cab privacy glazing (side, rear window)	●	
Sliding window in cab door	●	
Cab with laminated safety glass front and roof area (protection class P5A)		●
Cab with armored glass front and roof area (protection class P8B)		●
ISO control unit	●	
Windscreen washer (front windshield)	●	
Wiper/washer (roof window)		●
Roof window clear glass	●	
Air-cushioned driver's seat with headrest, safety belt, and lower lumbar support	●	
Seat contact	●	
Seat heating		●
Steering via Joystick	●	
Steering column with tilt and height adjustment		●
Separate heat exchanger air conditioner	●	
Automatic climate control	●	
Auxiliary heating incl. timer		●
Bottle holder with cooler	●	

EQUIPMENT

Cab	Standard	Option
Powder fire extinguisher with holder		●
Document clip	●	
Protective roof grating (FOPS)		●
Protective front and roof grating		●
Voltage converter 12 V		●
12 " multifunction display with touch function	●	
Digital radio (DAB+, USB, Bluetooth and hands-free)	●	
24V socket / cigarette lighter	●	
12V socket / cigarette lighter		●
Warning device driving with LED rotating beacon and acoustic signal		●
Joystick variant 1		●
Joystick variant 2		●
Joystick variant 3		●
Joystick with driver recognition		●
Work equipment		
Loading equipment		
59'; 62'4''; 68'10''; 72'2''; 78'8''; 88'6''		●
SMART Stick Proximity Control	●	
Overload and work area control		●
Overload warning device		●
Filter system for attachments		●
Hose rupture safety valves for boom cylinders including Regeneration	●	
Hose rupture safety valves for dipperstick cylinders including Regeneration	●	
Hose rupture safety valves for hybrid cylinders	●	
Camera dipperstick		●
1x Power LED boom, 1x Power LED dipperstick	●	
Float switch		●
Quick-lock couplings on the dipperstick	●	
End position damping boom	●	
End position damping dipperstick	●	
Lubrication via central lubrication system	●	
Electric supply of attachments		●
Tool control	●	
Electrical system		
Isolator switch, LOG OUT / TAG OUT	●	
30 kW DC generator incl. insulation monitoring		●
For diesel engine: driven hydraulically		●
Driving warning devic		●
Electrical tank refilling pump		●
Preheating of hydraulic 120 V		●
Preheating of hydraulic 230 V		●
LED headlights on machine front	●	
LED light packages		●
Ascent lighting with remote control (Gantry)	●	
Other equipment		
System status display	●	
Display error description and diagnosis	●	
Rear view camera	●	
Side camera	●	
Camera on the undercarriage for environment detection		●
Camera for the ascent system (gantry)	●	
Acoustic warning in case of critical machine conditions	●	
Pylon		●
Special coating		●
Fuchs Connect telematics system, including 5-year license	●	



## ATTACHMENTS AND LOADING EQUIPMENT

- Robust and FEM-optimised loading device, designed for heavy-duty material handling applications
- Banana boom for an optimised range curve, which greatly facilitates the unloading of bulk carriers and barges
- Hydraulic installation designed for material handling, with mostly durable piping being used
- Hose rupture safety valves on all-working cylinders, while boom and stick cylinders also have hydraulic regeneration for enhanced efficiency and safety in every application
- Tool control: oil flowrate and pressures for attachments individually adjustable
- Blue Hybrid System: Storage of surplus energy during lowering of the loading equipment in accumulators, which can be used during the next loadcycle

## UPPERCARRIAGE

- High-performance cooling systems, with separate coolers for the engine, the hydraulic oil and air conditioning
- Fans with thermostatic control, ensuring temperatures consistently remain within the optimal range. This prolongs their lifespan and helps to reduce operating costs.
- Highly efficient mobile hydraulics
- Rear view and side camera

## UNDERCARRIAGE

- Mobile \*
- Crawler
- Portal \*
- Rail-car \*

## CAB

- Fuchs comfort cab
- Large panoramic ceiling for an optimal overhead visibility
- Wiper arms and motors out of the field of view
- Automatic climate control
- Large port comfort oder marina comfort cab \*
- Various cab lifting systems available

## DRIVE

- Blue Hybrid System reduces fuel consumption up to 35%. The system power of 670 hp ensures energy-efficient loading cycles, maximum handling performance and increases productivity

### Diesel engine

- Low emissions thanks to state-of-the-art EU Stage 5 exhaust gas cleaning system
- Best in class fuel consumption
- Exhaust system incl. DPFs are optimally protected against mechanical damage
- Extended oil service period

### Electric motor

- Low operating costs
- Minimum noise
- ZERO local emissions

## FUCHS SERVICE PLATFORM

- Unique in the market
- Gantry machine: Service platform access via catwalk
- Secure place for carrying out service
- Convenient access to engine compartment, Fuchs Hybrid system components, main control block, central lubrication system, air filter, tanks and much more.
- Generous maintenance flaps made of sheet steel with gas spring
- Maintenance work can be completed quickly, safely and comfortably

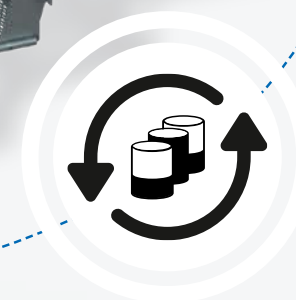
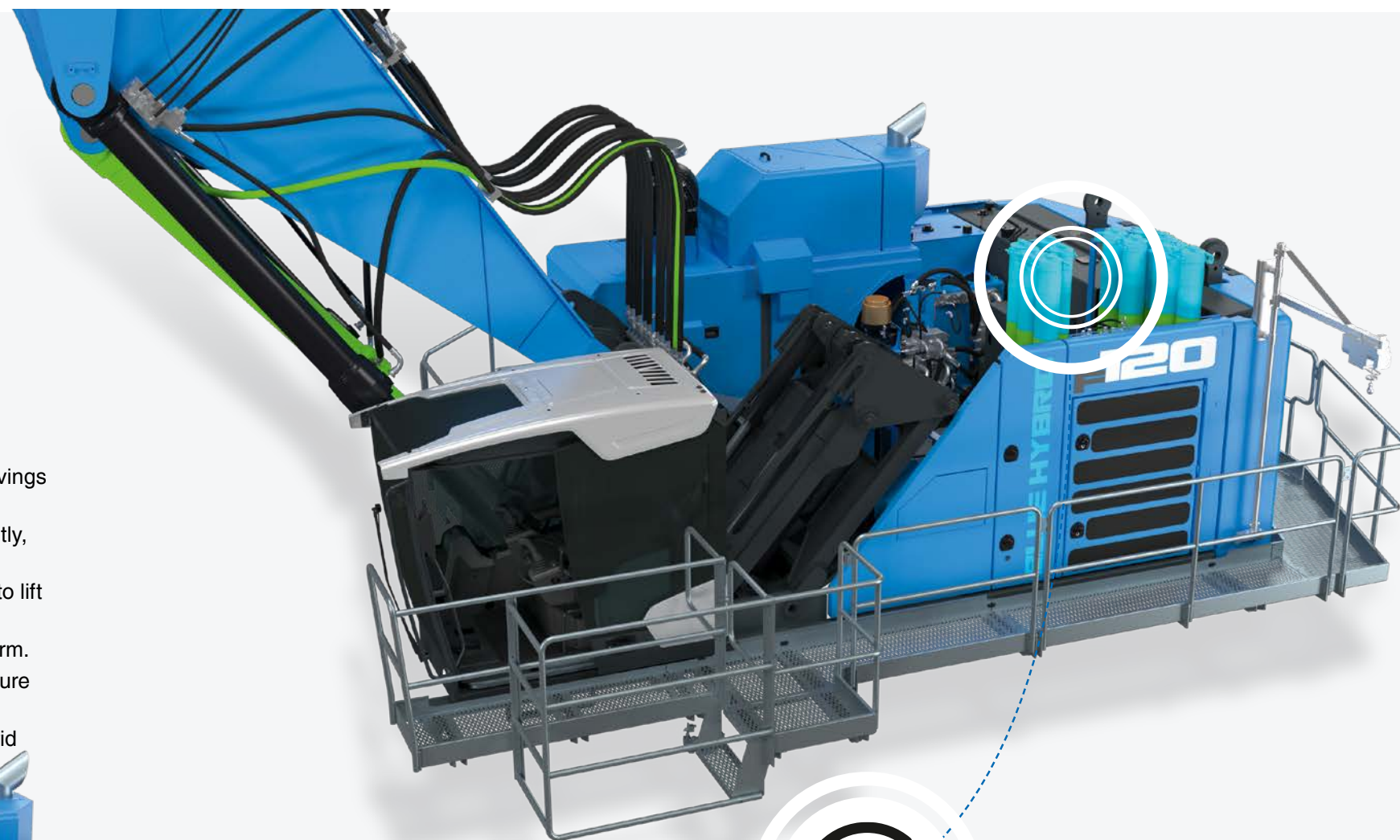




# FOCUS ON ENERGY EFFICIENCY

## Blue Hybrid System

- The Fuchs Hybrid System increases energy efficiency and enables energy savings of up to 35% through recuperation.
- Due to the energy recovery, the installed diesel engine power and, consequently, fuel consumption were significantly reduced.
- During each loading cycle, excess energy is stored and subsequently utilized to lift the boom in the next loading cycle.
- All components are safely and conveniently accessible from the service platform.
- Thermally controlled to permanently maintain the optimum operating temperature of the hybrid system and thus ensure maximum energy efficiency.
- Thermally controlled to maintain the optimal operating temperature of the hybrid system and to ensure maximum energy efficiency.

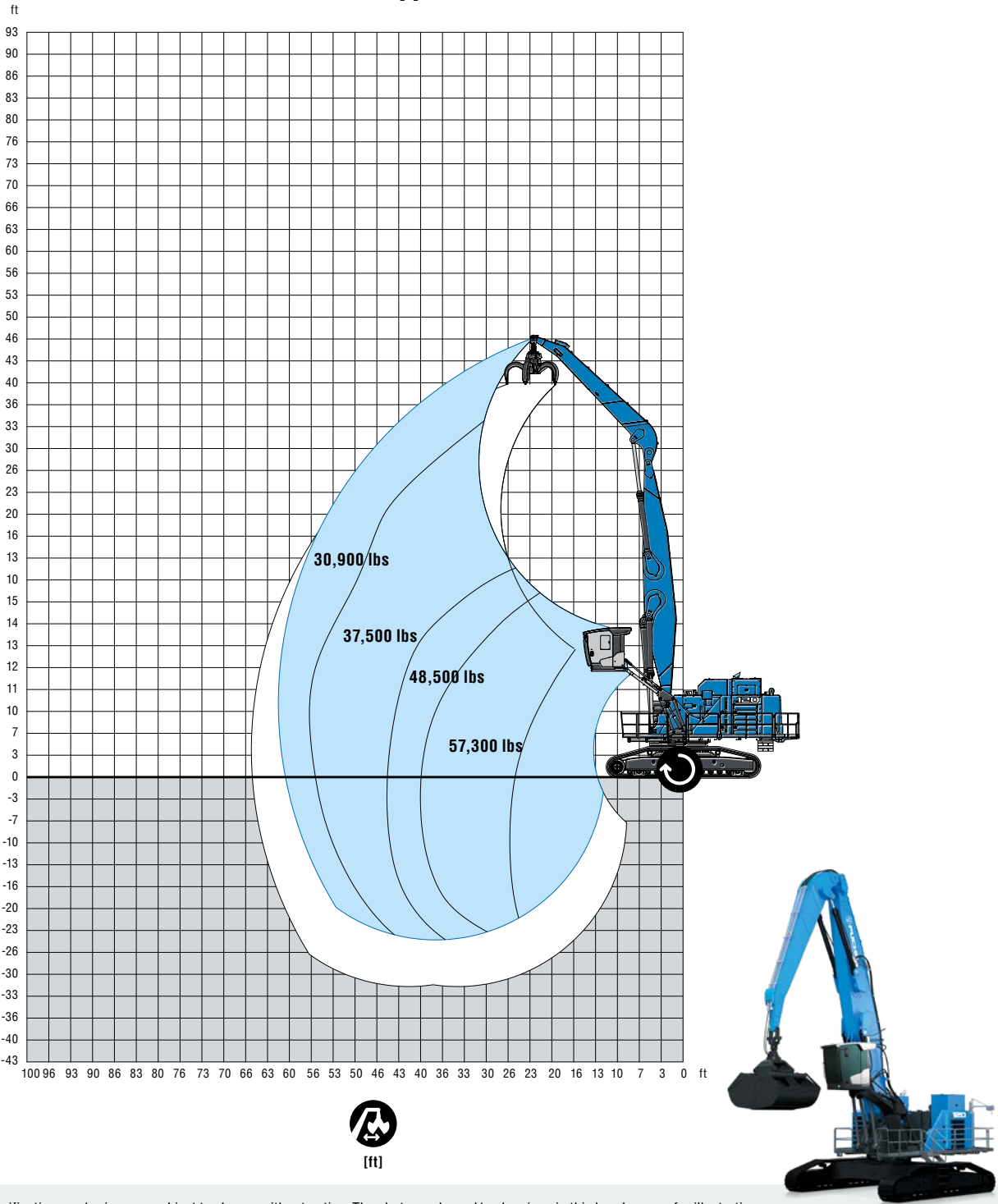




RANGE CHARTS

59'

Boom: 36'1" - Dipperstick: 25'3"

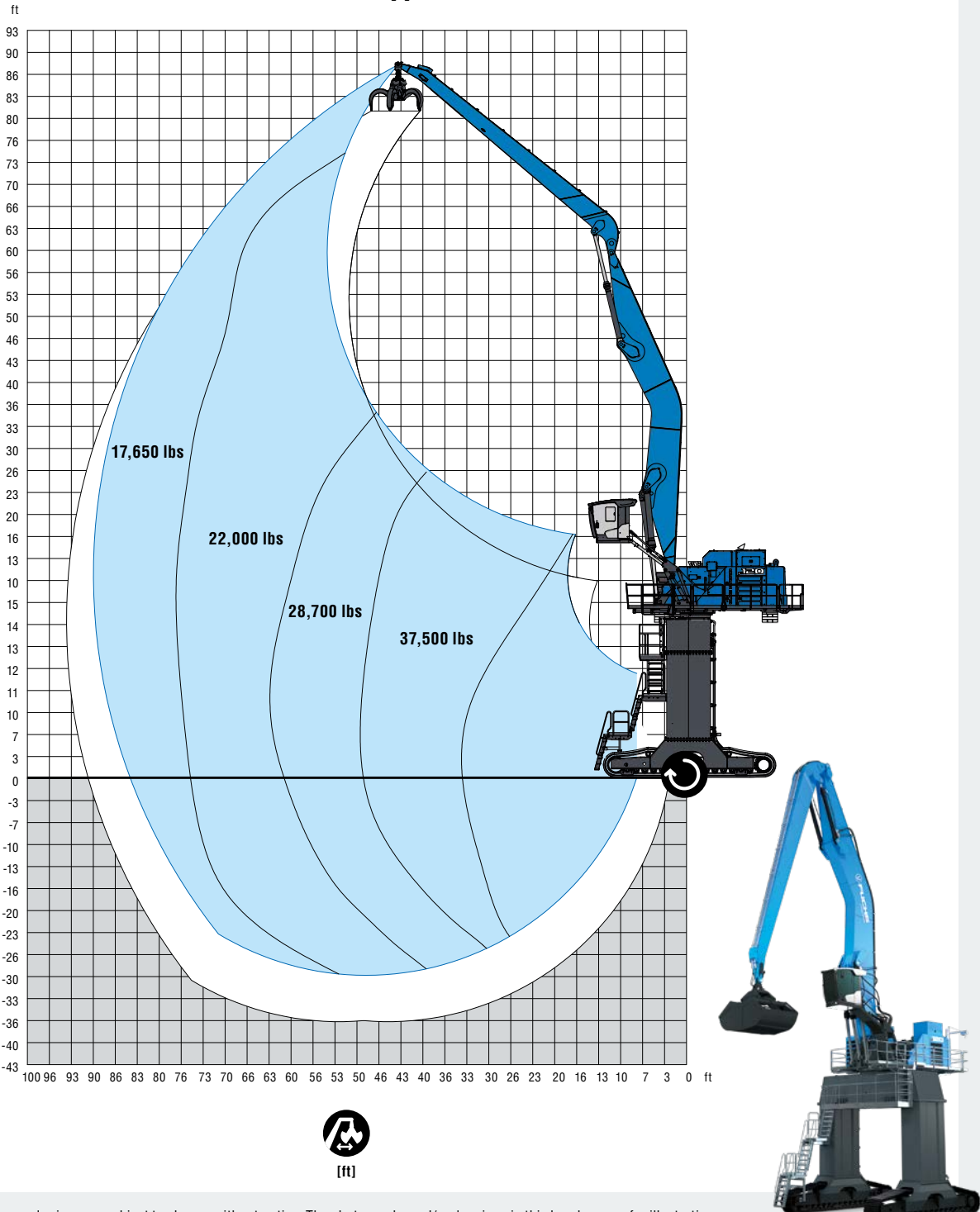


Product specifications and prices are subject to change without notice. The photographs and/or drawings in this brochure are for illustrative purposes only. Refer to the operating instructions for instructions on the proper use of this equipment.  
Feel free to contact your Fuchs dealer for detailed load capacities for your application.

RANGE CHARTS

88'6"

Boom: 49'3" - Dipperstick: 42'8"



Product specifications and prices are subject to change without notice. The photographs and/or drawings in this brochure are for illustrative purposes only. Refer to the operating instructions for instructions on the proper use of this equipment.  
Feel free to contact your Fuchs dealer for detailed load capacities for your application.



---

**[www.terex-fuchs.com](http://www.terex-fuchs.com)**

December 2023. Product specifications and prices are subject to change without notice. The photographs and/or drawings in this document are for illustrative purposes only. Refer to the appropriate Operator's Manual for instructions on the proper use of this equipment. Failure to follow the appropriate Operator's Manual when using our equipment or to otherwise act irresponsibly may result in serious injury or death. The only guarantee that applies to our equipment is the standard written guarantee for the specific product and the corresponding purchase agreement. Terex provides no other warranties, either express or implied. © Terex Corporation 2023 · Terex, the Terex Crown logo, Fuchs, and Works For You are trademarks of the Terex Corporation or its subsidiaries.

Terex® Deutschland GmbH | Industriestraße 3 | 76669 Bad Schönborn | Germany | Fon: +49 (0) 7253 84-0 | Fax: +49 (0) 7253 84-102 | [info@terex-fuchs.com](mailto:info@terex-fuchs.com)

