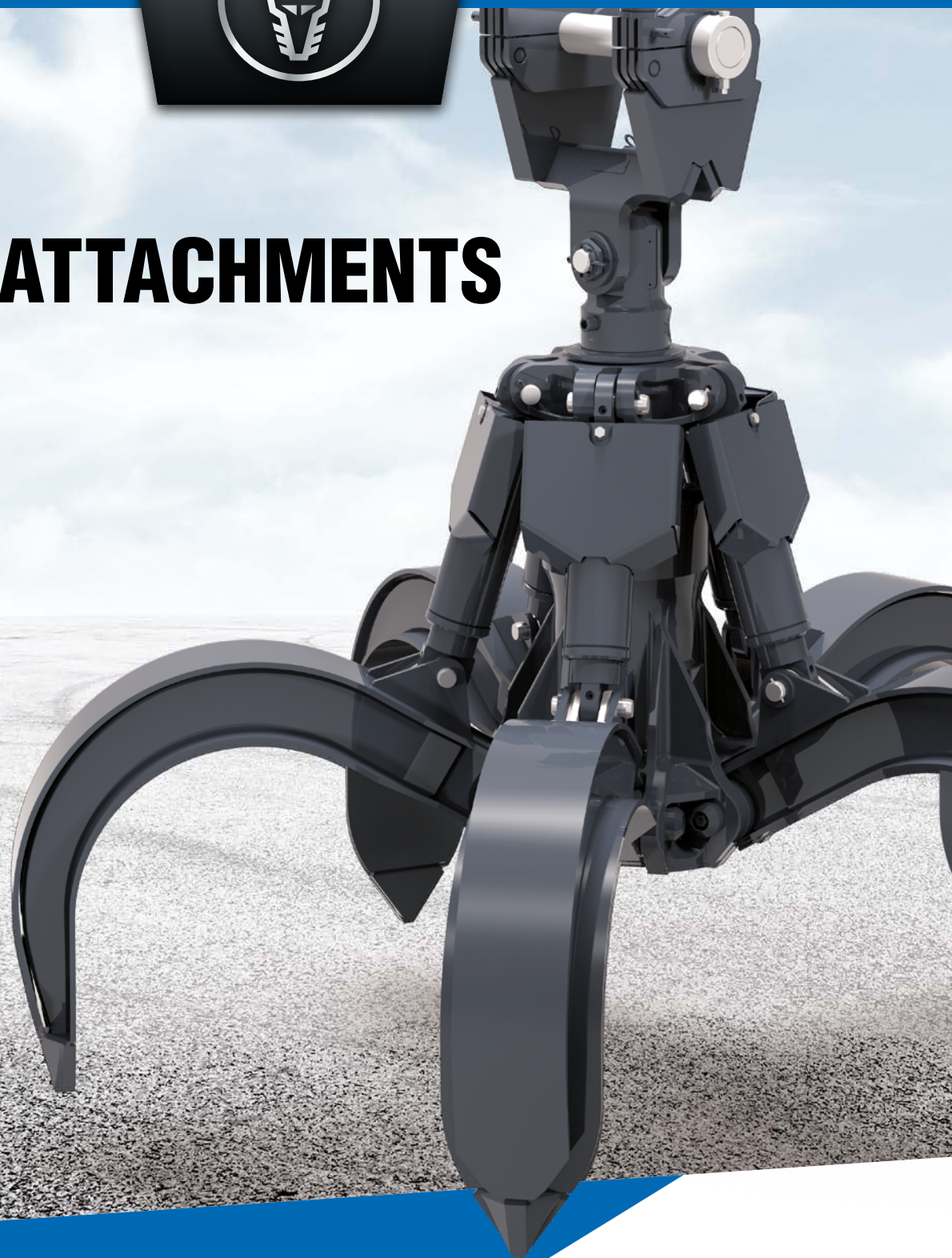




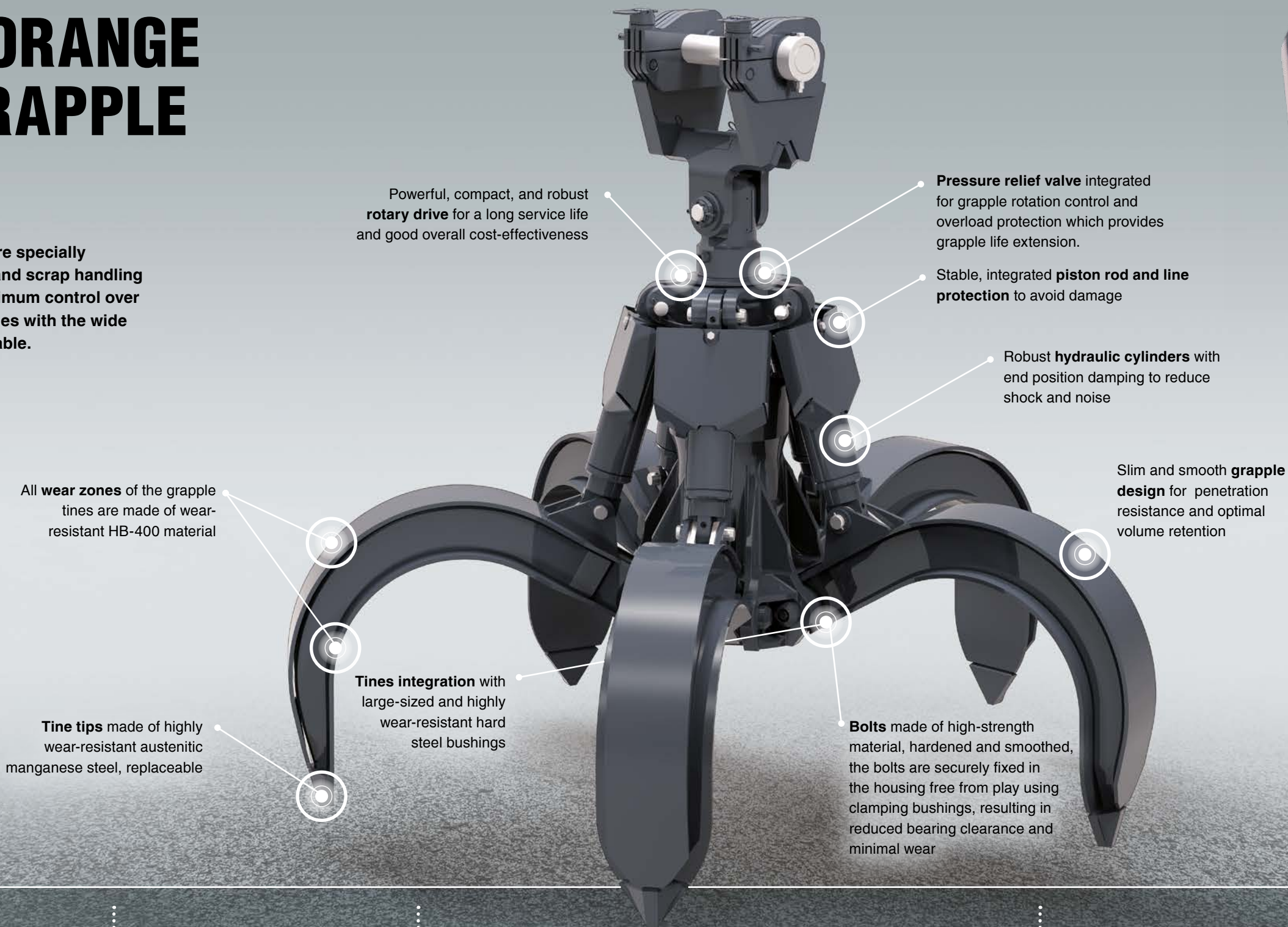
WORK ATTACHMENTS



FUCHS[®]
A TEREX BRAND

FUCHS ORANGE PEEL GRAPPLE

Fuchs work attachments are specially designed for all recycling and scrap handling applications. You have optimum control over your material flow at all times with the wide range of tool options available.



CONTROL VIA THE FUCHS DISPLAY

The rotation speed for the grapple can be adjusted easily and individually via the display.

ROTATION SPEED

continuously adjustable

TORQUE

continuously adjustable

ROTATION OF GRAPPLE
Preselection proportional or black / white control
Rotation of grapple

Grapple Torque
max. **4,100** Nm

Grapple Speed
max. **24** rpm

Operating Pressure
Opening / Closing
max. **4,641** psi

Quantity of Oil
Opening
max. **39.6** gpm

Quantity of Oil
Closing
max. **66** gpm

ORANGE PEEL GRAPPLE
FMG (SEMI-CLOSED)

Fuchs 5-tine orange peel grapple with 0.52 - 1.3 yd³ filing capacity.

Fuchs orange peel grapple have been specially developed for scrap handling. Their robust design ensures longevity of components.

The performance of the orange peel grapple is a result of our simple yet robust kinematics, high clamping forces and proper adaption of high pressures. The use of high-quality materials guarantees a long service life.



ORANGE PEEL GRAPPLE FMG (SEMI-CLOSED)

Type	Overall width (closed) A	Opening width B	Height (closed) C	Filling Capacity	Grapple tines	Grapple peak force	Load capacity	Weight	Weight with attachment (semi-closed)
FMG 04	49"	80"	76"	0.52 yd³	5	9,667 lbf	18,519 lbs	3,252 lbs	3,527 lbs
FMG 06	55"	93"	82"	0.78 yd³	5	8,093 lbf	18,199 lbs	3,571 lbs	3,847 lbs
FMG 08	61"	99"	85"	1.04 yd³	5	7,418 lbf	17,835 lbs	3,935 lbs	4,211 lbs
FMG 10	69"	103"	87"	1.3 yd³	5	7,306 lbf	17,483 lbs	4,288 lbs	4,564 lbs

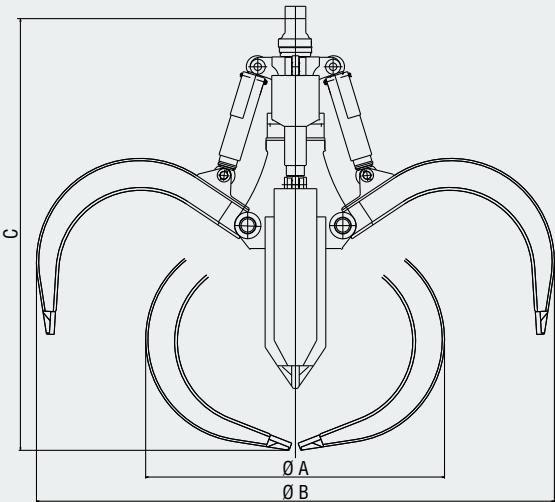
SCOPE OF DELIVERY

- Orange peel grapple
- Swing assembly
- 360 rotation with mounting pin
- Shock valve

OPTIONAL

- Dipperstick pin
- Quick-attach mounting
- Hose kit
- Quick-closure coupling

i When choosing a grapple, remember to consider the individual load capacities of the respective machine.



ORANGE PEEL GRAPPLE
FMG (OPEN)

Fuchs 5-tine orange peel grapple with 0.52 - 1.3 yd³ filling capacity.

Fuchs orange peel grapple have been specially developed for scrap handling. Their robust design ensures longevity of components.

The performance of the orange peel grapple is a result of our simple yet robust kinematics, high clamping forces and proper adaption of high pressures. The use of high-quality materials guarantees a long service life.



ORANGE PEEL GRAPPLE FMG (OPEN)

Type	Overall width (closed) A	Opening width B	Height (closed) C	Filling Capacity	Grapple tines	Grapple peak force	Load capacity	Weight	Weight with attachment (open)
FMG 04	49"	80"	76"	0.52 yd³	5	9,667 lbf	18,739 lbs	3,031 lbs	3,307 lbs
FMG 06	55"	93"	82"	0.78 yd³	5	8,093 lbf	18,475 lbs	3,296 lbs	3,572 lbs
FMG 08	61"	99"	85"	1.04 yd³	5	7,418 lbf	18,398 lbs	3,373 lbs	3,649 lbs
FMG 10	69"	103"	87"	1.3 yd³	5	7,306 lbf	18,166 lbs	3,605 lbs	3,880 lbs

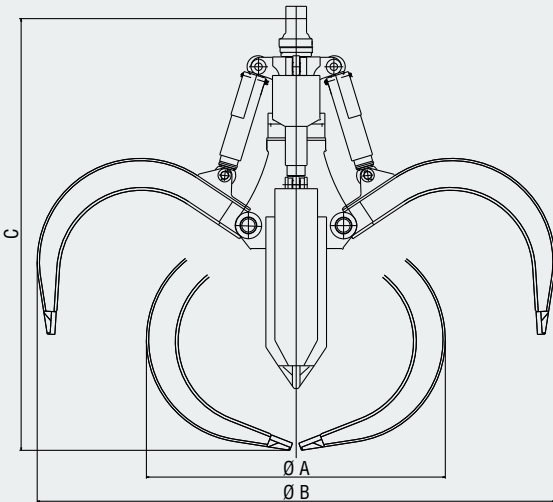
SCOPE OF DELIVERY

- Orange peel grapple
- Swing assembly
- 360 rotation with mounting pin
- Shock valve

OPTIONAL

- Dipperstick pin
- Quick-attach mounting
- Hose kit
- Quick-closure coupling

i When choosing a grapple, remember to consider the individual load capacities of the respective machine.



DEMOLITION & SORTING GRAPPLES FSG

Reliable, service-friendly and extremely strong. The Fuchs Grapple has been proven to be the perfect grab for industrial demolitions and intensive sorting and recycling applications.

The FSG Series standard has perforated shells with optional closed,- or rib shells, meaning there is a right Fuchs Sorting & Demolition Grapple for truly any application.

DEMOLITION & SORTING GRAPPLES Fsg

Type FSG	FSG 09-MH	FSG 12-MH	FSG 15-MH	FSG 22-MH	FSG 30-MH
Information					
Weight *	959 lbs	1,984 lbs	2,238 lbs	2,976 lbs	3,527 lbs
Volume	0.183 yd³	0.425 yd³	0.523 yd³	0.693 yd³	0.873 yd³
Closing force **	5,845 lbf	9,217 lbf	9,217 lbf	11,914 lbf	13,713 lbf
Opening width A	53"	69"	72"	79"	87"
Overall width B	26"	32"	35"	39"	43"
Heigh C	39"	53"	54"	58"	56"
Hole-pattern	110-120	130-140	130-140	130-140	140-150
Max. operating pressure cylinder	4,641 psi	4,641 psi	4,641 psi	5,076 psi	5,076 psi
Max. operating pressure motor	1,740 psi	2,030 psi	2,030 psi	2,030 psi	2,466 psi

*Weight exclusive adapterplate.
**Closing force by 4,641 psi.

SCOPE OF DELIVERY

- Demolition & Sorting Grapples FSG
- Integrated adapter plate for Fuchs MH
- Shock valvel

OPTIONAL

- Hose kit
- Pins



ROTATING HEAD AND SLEWING RING

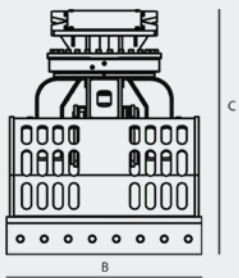
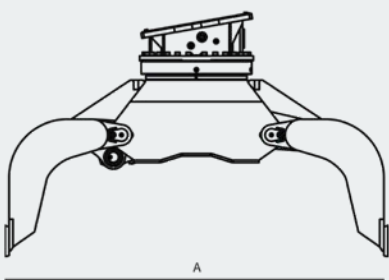
- Equipped with a robust rotating head and generously dimensioned slewing ring
- The demolition and sorting grapple can always be positioned as required

WEAR-RESISTANT SHELLS WITH LONG BEARING PIVOT POINTS

- Easily replaceable cutting edges
- Hardened special bolts are mounted in the generously dimensioned pivot points of the double-walled grapple yoke

LOAD CONTROL VALVE

- Standard-equipped with a load control valve
- Secures the load when the oil pressure drops
- Provides an extra-long stroke



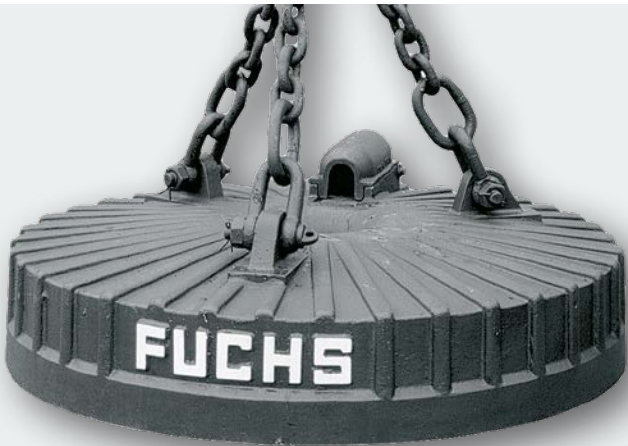
When choosing a magnetic plate remember to consider the individual load capacities of the respective machine.

MAGNETIC PLATES
FMP

Fuchs electromagnets demonstrate power and performance and are designed for use in scrap and storage areas.

The high handling capacity is guaranteed by the strong force field over the entire diameter range of the magnetic plate. The control works with counter-excitation by briefly reversing the polarity, which causes even the smallest iron parts to fall off

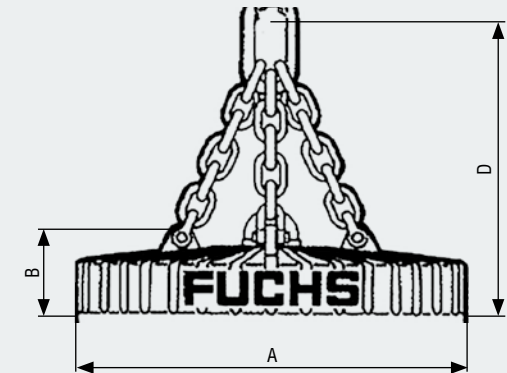
- Magnetic plate made of special dynamo cast steel and non-magnetizable cast steel base plate
- Magnetic upper parts made of special casting alloy
- Magnetic plate with chain suspension
- Hollow core for emitting the operating temperature and safe collection of drop balls



- Optimum alignment with direct current generator and three-phase generator with rectifier

MAGNETIC DEVICES FMP

Type ¹	Diameter	Height to upper part attachment B	Height to chain suspension D	Net weight	Net weight internal resistance ²	Power consumption		Operating time	Voltage
	A					68 °F	176 °F		
FMP 950	37"	9"	35"	1,587 lbs	10.80 Ohm	4.5 kW	3.6 kW	65 %	220 V DC
FMP 1150	45"	9.7"	37"	2,359 lbs	8.10 Ohm	6.0 kW	4.5 kW	65 %	220 V DC
FMP 1250	49"	10.6"	43"	2,998 lbs	6.10 Ohm	7.9 kW	6.3 kW	65 %	220 V DC
FMP 1350	53"	10"	43"	3,594 lbs	6.00 Ohm	8.1 kW	6.5 kW	65 %	220 V DC
FMP 1500	59"	10.6"	47"	4,409 lbs	5.40 Ohm	9.0 kW	7.0 kW	65 %	220 V DC
FMP 1750	69"	14"	53"	7,716 lbs	2.70 Ohm	17.8 kW	13.2 kW	65 %	220 V DC
FMP 2000	79"	15"	59"	12,125 lbs	2.35 Ohm	20.3 kW	15.0 kW	65 %	220 V DC



Type	Load capacity ³				
	Air gap D/300	Solid scrap Type 24	Pig iron	Cast iron scrap Type 3a	Swarf Type 40
FMP 950	22,046 lbs	793 lbs	1,014 lbs	881 lbs	419 lbs
FMP 1150	26,455 lbs	1,058 lbs	1,410 lbs	1,146 lbs	529 lbs
FMP 1250	30,864 lbs	1,146 lbs	1,785 lbs	1,389 lbs	661 lbs
FMP 1350	34,171 lbs	1,433 lbs	2,094 lbs	1,631 lbs	860 lbs
FMP 1500	43,210 lbs	1,918 lbs	2,425 lbs	2,204 lbs	1,058 lbs
FMP 1750	59,524 lbs	3,174 lbs	4,299 lbs	3,417 lbs	1,742 lbs
FMP 2000	92,594 lbs	4,695 lbs	6,878 lbs	5,445 lbs	2,668 lbs

The load capacity information stated for the various bulk materials represents average values measured in accordance with DIN-VDE 0580, and actual values can either exceed or fall below these average values, since the quantity recorded per magnetic transport is heavily influenced by the shape, alloy, composition, and storage of the relevant material. The operator's working methods also have an impact here.

All magnets can be customized to meet special requirements.

¹ smaller magnetic plates can be used at any time. This information only applies to the magnetic plates described from Fuchs; the performance of plates from other manufacturers cannot necessarily be deduced from the size. The internal resistance values must be observed in this case.

² values must not fall below the values stated for the internal resistance. Lower internal resistance values can result in overload, malfunction, or shutdown of the generator system. The internal resistance values must be observed.

³ The stated load capacities represent the calculated maximum achievable values of the individual magnet plates under optimum conditions, excluding chain hangers and suspension. Please note that the values that can actually be achieved may be limited by the chain hangers, suspensions, load capacities of the machine etc. used.

i When choosing a magnetic plate remember to consider the **individual load capacities of the respective machine**.

MACHINE OVERVIEW

Type		Magnetic plate						
		37" (D64)*	45" (D64)*	49" (D64)*	53" (D64)*	59" (D64)*	69" (D58)*	79" (D58)*
MHL320	9 kW	●	●	●	●	—	—	—
MHL320	11 kW	●	●	●	●	●	—	—
MHL331–MHL335	11 kW	●	●	●	●	●	—	—
MHL331–MHL335	13 kW	●	●	●	●	●	—	—
MHL340	13 kW	●	●	●	●	●	—	—
MHL340	17 kW	●	●	●	●	●	●	—
MHL350	13 kW	●	●	●	●	●	—	—
MHL350	20 kW	●	●	●	●	●	●	—
MHL360–MHL370	20 kW	●	●	●	●	●	●	—
MHL360–MHL370	30 kW	●	●	●	●	●	●	●
MHL375–MHL390	30 kW	●	●	●	●	●	●	●

Calculated based on the electrical conduction for the magnetic plates stated above. When selecting the magnetic plate, pay attention to the individual load capacities of the respective machines.

*Plug connector type on magnetic plate

Type		Machine plug connector	Cables		
			6835215075 (6 mm² K64–D64) 37"–59"	6835216076 (6 mm² K58–D64) 37"–59"	6836217075 (10 mm² K58–D58) 69"–79"
MHL320	9 kW	K64	●	—	—
MHL320	11 kW	K64	●	—	—
MHL331	11 kW	K64	●	—	—
MHL331	13 kW	K64	●	—	—
MHL340	13 kW	K64	●	—	—
MHL340	17 kW	K58	—	●	●
MHL350	13 kW	K64	●	—	—
MHL350	20 kW	K58	—	●	●
MHL360–MHL370	20 kW	K58	—	●	●
MHL360–MHL370	30 kW	K58	—	●	●
MHL375–MHL390	30 kW	K58	—	●	●



MOUNT FOR MAGNETIC PLATE
IN THE GRAPPLE

- can be changed quickly and easily
- without uncoupling the grapple
- normal chain suspension can still be used for the magnetic plate
- no special magnetic plate mount required

LOAD HOOKS
FLH

Fuchs load hooks with high load capacity

Fuchs load hooks with a load capacity of up to 20 tons are used primarily for heavy handling operations. A wide range of options makes it easier to use in every day operation. The Fuchs load hook come standard with quick-change hangers in either a fixed or rotating hook design.

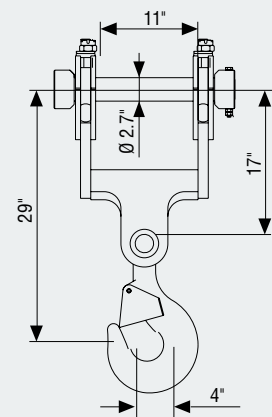
LOAD HOOKS FLH
WITH QUICK-ATTACH MOUNTING

Type	Weight	Fixed	Rotating	Permissible load capacity in accordance with the drive mechanism unit	
				3 _m	18 _m
FLH10	254 lbs	●		22,046 lbs	
FLH10	309 lbs		●	22,046 lbs	
FLH20 s	375 lbs		●		44, 092 lbs
FLH20 I	375 lbs				44, 092 lbs

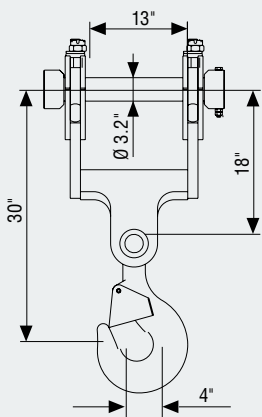
REQUIREMENTS FOR THE SUPPORT FRAME

Type	Mounting width	Bolt diameter
FLH10	11"	2.7"
FLH20 s	11"	2.7"
FLH20 I	13"	3.2"

Load hook FLH10 / load hook FLH20 s



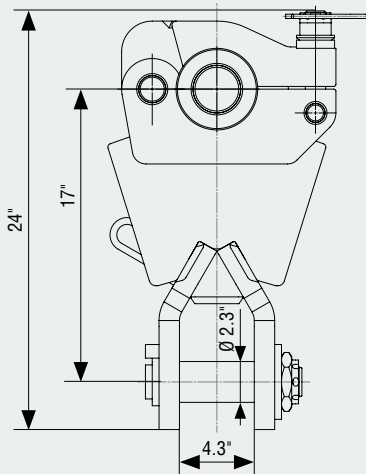
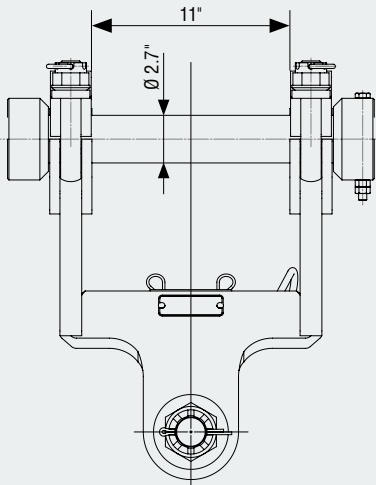
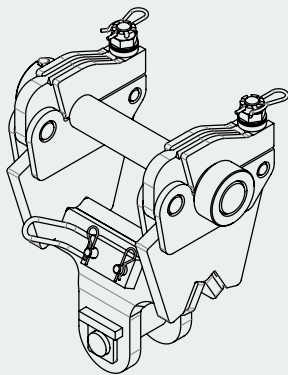
Load hook FLH20 I



QUICK-ATTACH MOUNTING FGA

MECHANICAL WITH DIPPERSTICK PIN
FOR GRAPPLE 0.52–1.3 yd³

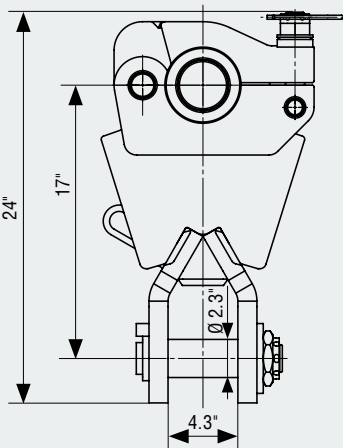
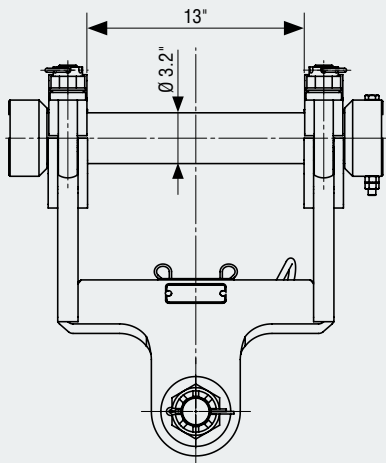
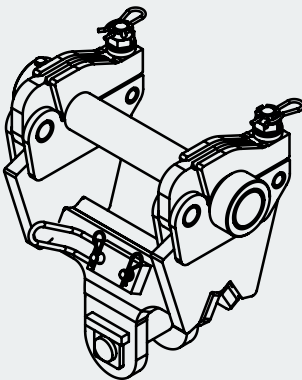
Load capacity: 22,046 lbs | Weight: 276 lbs



Suitable for:
MHL 320–MHL 370
MHL 334, MHL 354, MHL 364, MHL 434

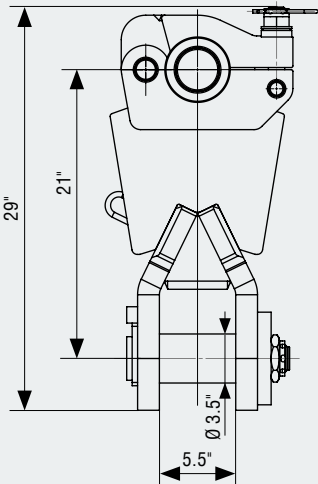
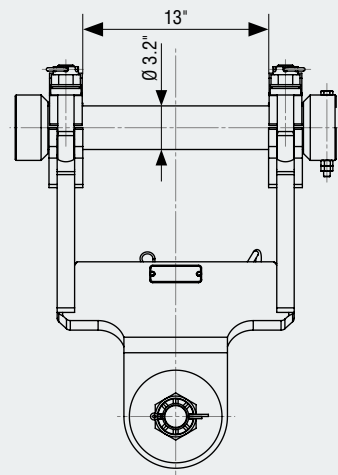
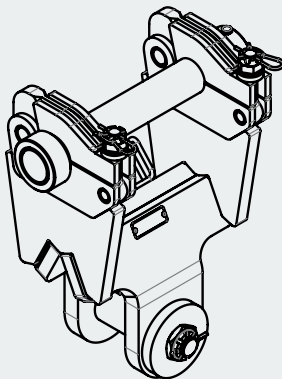
MECHANICAL WITH DIPPERSTICK PIN
FOR GRAPPLE 0.52–1.3 yd³

Load capacity: 22,046 lbs | Weight: 298 lbs



Suitable for:
MHL 375, MHL 380, MHL 390

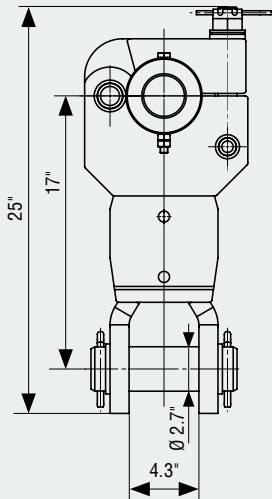
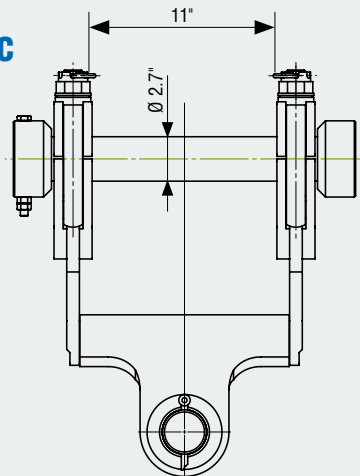
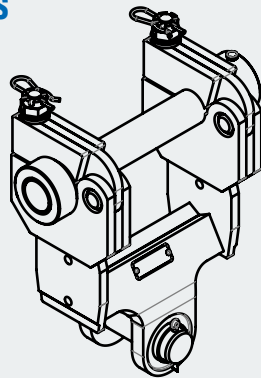
MECHANICAL WITH DIPPERSTICK PIN
FOR GRAPPLE 1.31–1.83 yd³



Load capacity: 38,580 lbs | Weight: 408 lbs

Suitable for:
MHL 375, MHL 380, MHL 390

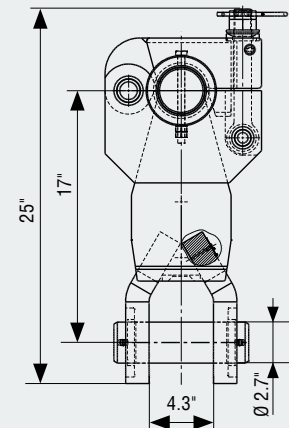
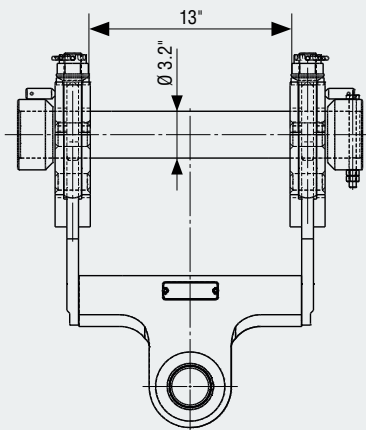
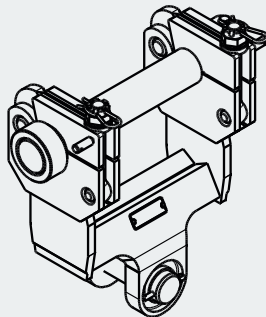
MECHANICAL WITH DIPPERSTICK PIN
FOR CHAIN SUSPENSIONS AND MAGNETIC
PLATES



Load capacity: 22,046 lbs | Weight: 243 lbs

Suitable for:
MHL 320–MHL 370

Load capacity: 22,046 lbs | Weight: 276 lbs



Suitable for:
MHL 375–MHL 390



NOTIZEN

NOTIZEN



FUCHS[®]
A TEREX BRAND

WORKS FOR YOU.[™]

www.terex-fuchs.com

September 2023. Product specifications and prices are subject to change at any time without notice. The photographs and/or drawings in this document are for illustrative purposes only. Please refer to the respective Operator's Manual for correct use of the corresponding product. Failure to comply with the instructions in the Operator's Manual when using our equipment or other negligent conduct can result in serious injury or death. The only guarantee that applies to our equipment is the standard written guarantee for the specific product and the corresponding purchase agreement. Terex provides no other warranties, either express or implied. © Terex Corporation 2023 - Terex, the Terex Crown logo, Fuchs, and Works For You are trademarks of the Terex Corporation or its subsidiaries.

Fuchs USA | 11001 Electron Drive | Louisville, KY 40299 | USA | Phone: +1 502 640 6001 | sales.fuchsus@terex.com

