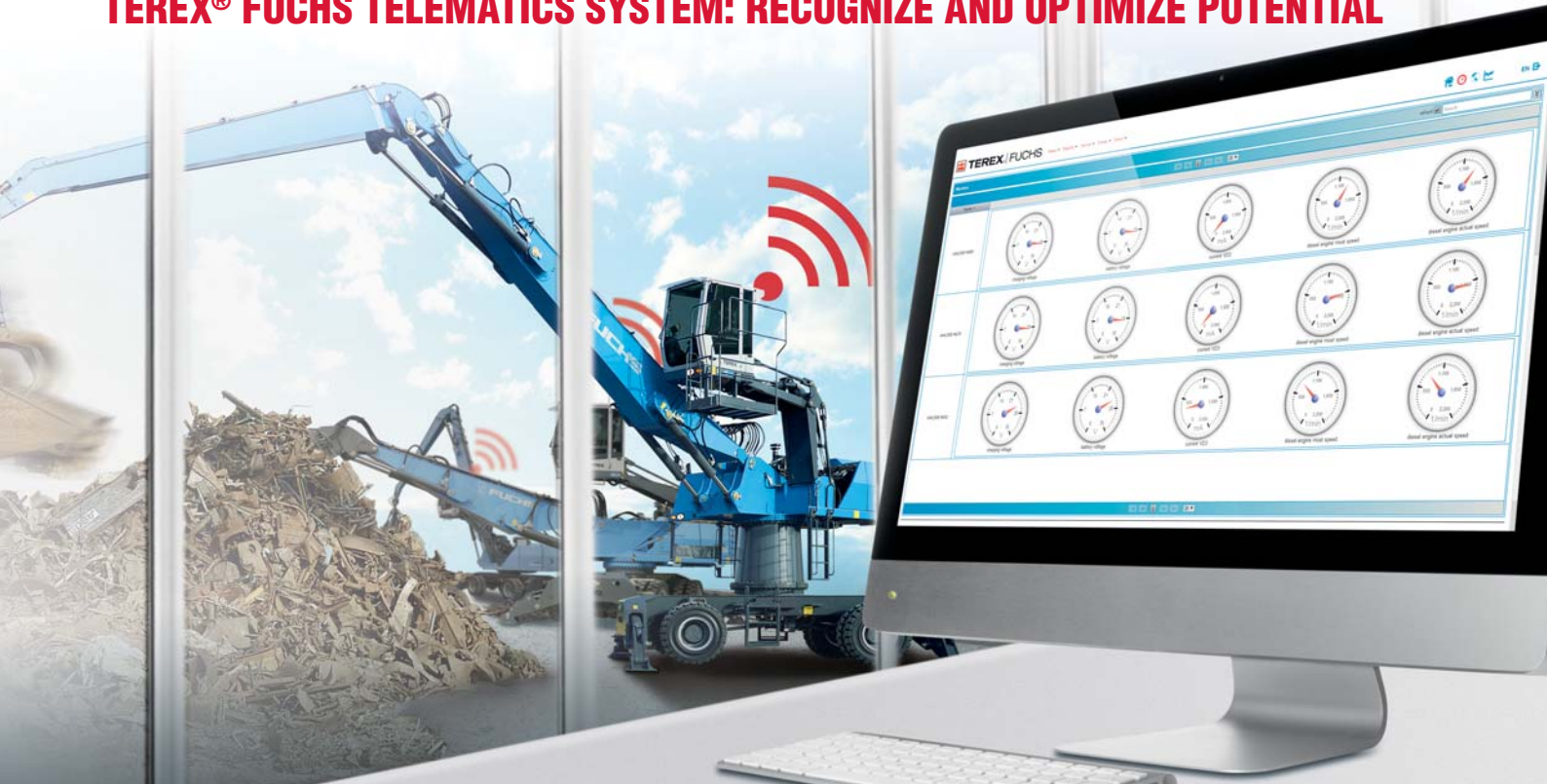


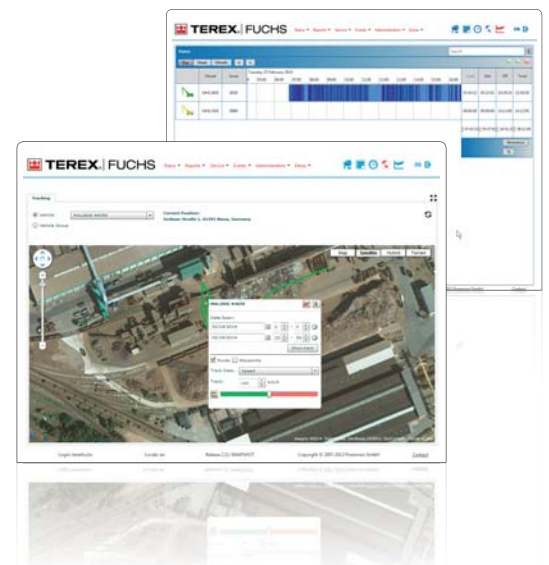
GET A HANDLE ON FLEET MANAGEMENT

TEREX® FUCHS TELEMATICS SYSTEM: RECOGNIZE AND OPTIMIZE POTENTIAL



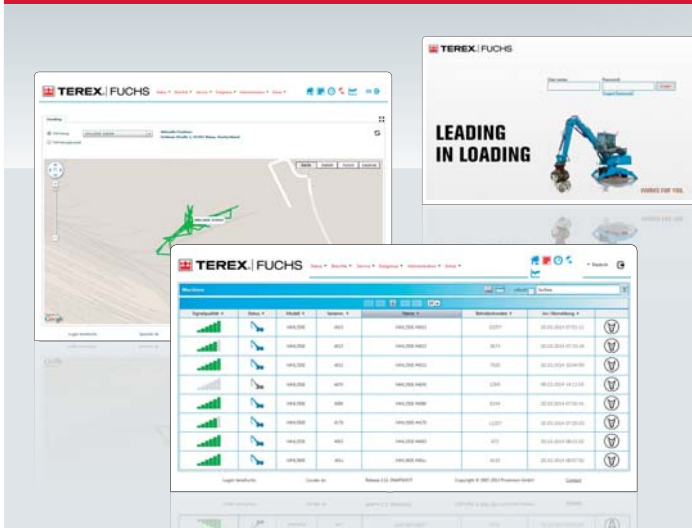
The new Terex® Fuchs Telematics system: know exactly how and where everything is running.

The new Terex® Fuchs Telematics system offers a modern solution to help you analyze and optimize the efficiency of your machines. The Terex® Fuchs Telematics system records and communicates valuable information on the operating status of each individual machine. Where are the machines? How are they working? Is a service check pending? Take advantage of this advanced software and get a handle on your fleet management with the tool that connects for you.



ALL-IN-ONE MACHINE MANAGEMENT

Everything at a glance: operating data, machine status, GPS data



Record, display, and analyse data: high efficiency through precise information

- + Available online anywhere and at any time*: comprehensive information on the GPS location, start and stop times, fuel consumption, operating hours, maintenance status, and much more.
- + User-friendly interface: displays information clearly for at a glance metrics and diagnostics. Take action before damage occurs: predetermined maintenance intervals are signalled and error messages are displayed in plain text messages.
- + The Terex® Fuchs Telematics system is optionally available or can be retrofitted into existing machines to help control your operating costs and keep your machines in top shape.

Available anywhere and at any time*

- + PC
- + Tablet
- + Smart Phone

Machine overview

- + The status of each machine at a glance (on / off / idle, error message etc.)
- + Faults are immediately located and relayed

Machine data

- + Detailed display of the current operating data of the machines
- + You can take action immediately for adverse operating statuses
- + Support for service engineers

Dashboard display

- + Color display of the engine speed, coolant temperature and hydraulic oil temperature as a circular instrument
- + Immediate notification of critical statuses

Utilization report

- + Display of load, idle, and total service life (daily, weekly, or monthly)
- + Export available in common formats for data compiling
- + Useful for application and fleet planning

GPS: Machine Tracking

- + Get precise location information and precise application planning
- + Geofencing: limiting the range of movement
- + Tracking: machine movements can be monitored and optimized

Service reminders

- + Overview: past and future service deadlines
- + Automatic and timely reminders for future service deadlines
- + Helps increase uptime with early planning and regular maintenance

Fuel consumption report

- + Under load, idle, and total service life of the machines (daily, weekly, or monthly)
- + Support for economic efficiency analyses and for determining saving potential

www.terex-fuchs.com

* Internet connection required

Valid from: October 2014. Product specifications and prices are subject to change without notice. The photographs and/or drawings in this document are for illustrative purposes only. Refer to the relevant operating instructions for the proper use of the machines. Failure to follow the appropriate operating instructions when using our equipment or to otherwise act irresponsibly may result in serious injury or death. The only warranty applicable to our equipment is the standard written warranty applicable to the particular product. Terex does not supply any other guarantee beyond this, express or implied. The specified products and services are, where applicable, trademarks, service marks, or trade names of Terex Corporation and/or its subsidiaries in the USA and other countries. All rights reserved. Terex is a Registered Trademark of Terex Corporation in the United States of America and many other countries. © 2014 Terex Construction. Terex, the Terex Crown design, Terex Fuchs, and Works For You are trademarks of Terex Corporation or its subsidiaries.

