

 **TEREX®** | BID-WELL

ROLLER PAVER

4800



Road/Flatwork



Bridge



Airport



Highway



Canals

WORKS FOR YOU.

SPECIFICATIONS

POWER UNIT

Standard	Honda iGX800
Gross horsepower	24.9 hp / 18.6 kW
Gross Torque	40.2 lb-ft / 54.5 Nm
Cooling	Air
Optional	Kubota diesel engine (24.8 hp / 18.4 kW)

PAVING CARRIAGE

Standard	Honda iGX800 (24.9 hp / 18.6kW)
Optional	Kubota diesel engine (24.8 hp / 18.4kW)
Finishing rollers	Dual 5 ft / 1.5 m
Strike off auger	Dual 8 in / 20 cm dia.
Rota-Vibe® drum	11.5 in / 29 cm

MACHINE FRAME

All welded steel frame for maximum strength with minimum weight	
Truss depth	48 in / 1.2 m
Standard machine length	36 ft / 11.0 m
Maximum standard length	120 ft / 36.6 m
Engineered width	180 ft / 54.9 m
Maximum leg span	117 ft / 35.7 m
Minimum paving width	12 ft / 3.6 m
Maximum paving width	116 ft / 35 m

MACHINE LEGS

Standard Heavy Duty Pivot Leg Plates	
Leg diameter	6 in / 15.2 cm
Maximum leg extension range	54.5 in / 1.25 m
Power legs - Power up and down	

FLUID CAPACITY

Power unit hydraulics	16.3 gal / 61.7 L
Power unit fuel	16 gal / 60.6 L
Carriage hydraulics	13.3 gal / 50 L
Carriage fuel	16 gal / 60.6 L



PAVING CARRIAGE

The 4800 paving carriage performs the functions to help finish your concrete deck or slab to job specifications.

- The augers, forward of the carriage, strike off excess concrete
- The patented Rota-Vibe® system consolidates the top 2.75 in / 6.9 cm of concrete
- The paving rollers finish the concrete
- The drag pan system seals and textures the deck

OPERATOR'S CONSOLE

The operator's console on the 4800 offers easy access to machine function controls. The operator has access to machine and carriage travel speed controls along with manual shift lever for carriage reversing. Most accessories can also be controlled from the operator's console including power crown, power leg for power up and down, power leg widening, and carriage fogging system.

VERSATILITY

The 4800 is a versatile concrete paving machine. Not only is it capable of efficiently paving bridges, but with the proper accessories can also be used to tackle flatwork and the toughest road paving projects. With a multitude of available accessories, the 4800 Automatic Roller Paver can be outfitted to meet almost any job specifications.

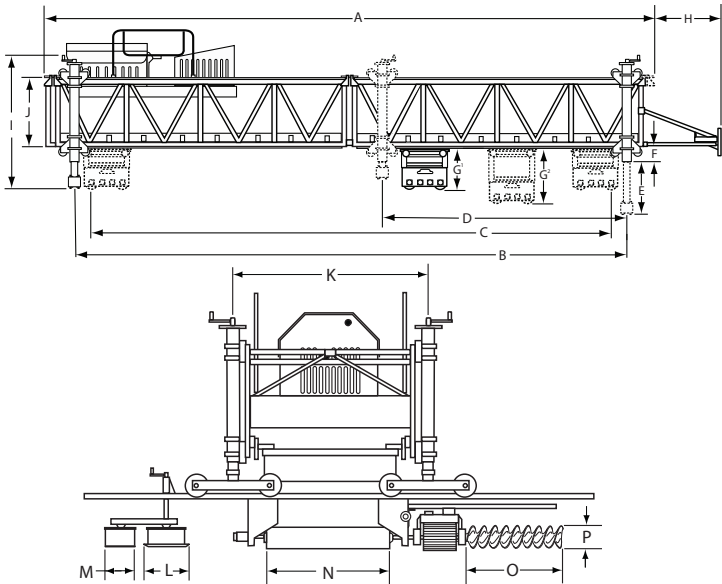
SETTING THE STANDARD

If the 4800's standard maximum span of 120 ft / 36.6 m is not wide enough to meet your job specifications, the Terex Bid-Well Engineering Department can assist you with a custom configuration. With factory consultation, the 4800 is capable of reaching spans up to 180 ft / 54.9 m. This type of configuration is ideal for large, heavily skewed decks or paving multiple lanes simultaneously dual paving carriages. This level of versatility is why Terex Bid-Well sets the standard in concrete paving and is just another way Terex Bid-Well, Works For You.



TEREX® | BID-WELL

STANDARD 4800 ROLLER PAVER

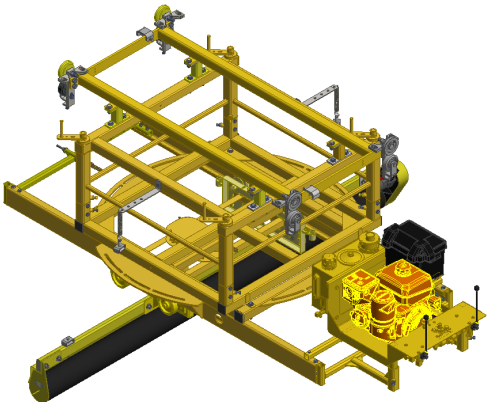


Dimensions			
A	36.5 ft / 11.12 m	I	111 in / 2.80 m
B	33.5 ft / 10.21 m	J	48 in / 1.20 m
C	32.5 ft / 9.91 m	K	91 in / 2.30 m
D	15.25 ft / 4.60 m	L	33 in / 83 cm
E	46 in / 1.16 m	M	19 in / 48 cm
F	15 in / 38 cm	N	60 in / 1.50 m
G ₁ G ₂ **	58 in / 1.40 m 63 in / 1.60 m	O	32 in / 81 cm
H	52 in / 1.32 m	P	8 in / 20 cm
Weights*			
Operating Weight	10,608 lbs / 4,812 kg		
Carriage	3,072 lbs / 1,393 kg		
Power Unit	1,281 lbs / 581 kg		
Bogie Wheel (qty 4)	615 lbs / 279 kg		

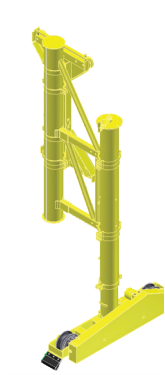
*Standard machine is defined as a 36.5 ft / 11.12 m machine consisting of two 18 ft / 5.4 m truss sections, power unit, carriage, four standard power up and down 6 in / 15 cm legs and pivot leg plates. Terex Bid-Well is not responsible for miscalculated wheel load weights based on the above information. For the most current wheel load weight calculators and machine weights please contact the Terex Bid-Well Applications Department at +1 605-987-2603. ** G₁ represents carriage retracted | G₂ represents carriage extended on cylinder for a stock machine.

ACCESSORIES

Terex Bid-Well offers a large selection of options and accessories for the 4800 model roller paver ranging from carriage fogging systems to weight distribution systems, vand traffic machine ends for skewed paving. Shown are just a few of the options available for contractors to equip their 4800 to meet any job specification. For more information on available options and accessories for the 4800 model roller paver, contact your Regional Sales Representative or the Terex Bid-Well Applications Department at +1 605-987-2603.



SKEVABLE SIDEWALK PAVER



6 IN / 15.2 CM SWING LEG



4 WHEEL TRAVEL DOLLY



THE PROVEN TEREX BID-WELL 4800 ROLLER PAVER

CONTACT YOUR REGIONAL SALES REPRESENTATIVE FOR MORE INFORMATION +1 605-987-2603

[terex.com/bid-well](https://www.terex.com/bid-well)

Effective Date: October 2021. Product specifications and prices are subject to change without notice or obligation. The photographs and/or drawings in this document are for illustrative purposes only. Refer to the appropriate Operator's Manual for instructions on the proper use of this equipment. Failure to follow the appropriate Operator's Manual when using our equipment or to otherwise act irresponsibly may result in serious injury or death. The only warranty applicable to our equipment is the standard written warranty applicable to the particular product and sale and Terex® makes no other warranty, express or implied. Products and services listed may be trademarks, service marks or trade-names of Terex® Corporation and/or its subsidiaries in the USA and other countries. All rights are reserved. Terex® is a registered trademark of Terex® Corporation in the USA and many other countries. Copyright 2021 Terex® Corporation.

Terex Bid-Well PO Box 97, Canton, SD 57013 USA



TEREX® | BID-WELL