

 **TEREX**® | BID-WELL

TC-360
T/C-3600-M
T/C-2400-M

TEXTURE/CURE MACHINE



WORKS FOR YOU.™

SPECIFICATIONS

TC-360

ENGINE

Standard: Diesel engine

Dry Weight 184 lbs / 83.4 kg

Gross horsepower at 3,000 rpm 55 hp / 41 kw

Cooling Liquid

HYDRAULICS

Pumps:

Pressure compensated deliver 26.6 gpm / 100.7 lpm

Dual gear pumps deliver 42.1 gpm / 159.3 lpm

Forced air hydraulic oil cooler

Filtration:

One suction filter

Two high pressure filters

MACHINE FRAME

Truss Depth 36 in / 1.2 m

Standard Machine Length 30 ft / 9.14 m

Two 12 ft / 3.6 m sections

Two 3 ft / .91 m sections

Minimum machine length 24 ft / 7.35 m

Maximum machine length 60 ft / 18.3 m

TRACK DRIVE SYSTEM

Four hydraulically powered planetary driven tracks

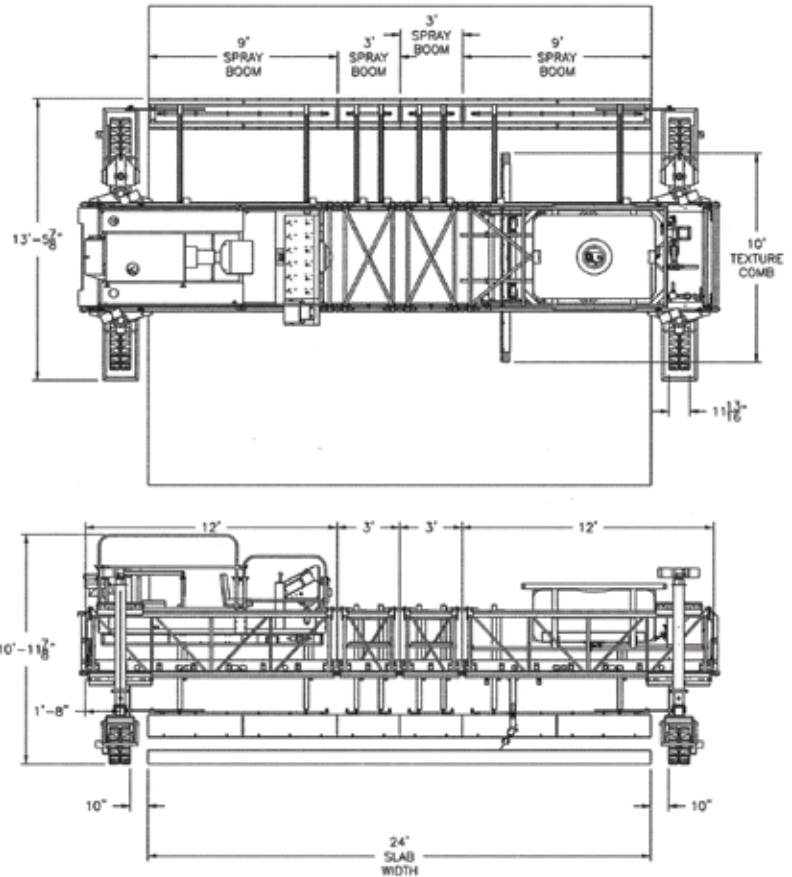
Width 11.8 in / 30 cm

Length 48 in / 1.2 m

Variable speed control up to 130 fpm / 39.6 mpm forward and reverse

TEXTURING

- Transverse: Texturing carriage travels on independent adjustable carriage track attached to machine mainframe bottom truss member, providing independent crown and slope control of texturing head to match pavement profile
- Optional: Longitudinal texturing with operator controlled hydraulic pickup



CURING

Curing compound distribution system includes:

- 300 gal / 1,135 L capacity oval storage/circulation tank
- A hydraulic variable speed and variable pressure pump for spraying, loading and unloading, and continuous jet agitation
- System includes filtration, clean out ports, and pressure monitoring gauges.
- Application provided by rear mounted spray bar with wind hood, hydraulic (fold-up) mechanism, anti-drip spray nozzles and side edge spray nozzles.
- Spray bar and hood are standard with two 9 ft / 2.74 m sections and two 3 ft / .91 m sections for 18 ft to 24 ft / 5.5 m to 7.32 m wide paving

TC-360

The Terex Bid-Well TC-360 offers a complete texture/cure solution for your large concrete paving job. Whether its heavy highway, airport or road paving, stand alone or following a Terex Bid-Well 6500 or a Terex SF3504B slipform paver, the TC-360 provides you with a means to finish your job to specifications.



TEREX | BID-WELL

SPECIFICATIONS

T/C-2400-M, T/C-3600-M

ENGINE

Standard: Gas engine

Dry Weight	184 lbs / 83.4 kg
------------	-------------------

Gross horsepower at 3,600 rpm	27 hp / 20 kw
-------------------------------	---------------

Cooling	Air
---------	-----

DRIVE SYSTEM

Two 36 in / 91 cm drive bogies

Cast concave, flat flanged or poly wheels for screed pipe or form riding

Optional pneumatic tire and track systems available

MACHINE FRAME

All welded steel frame for maximum strength with minimum weight

Truss Depth:

T/C-2400-M	24 in / .61 m
------------	---------------

T/C-3600-M	36 in / 1.2 m
------------	---------------

Standard Machine Length	30 ft / 9.1 m
-------------------------	---------------

MACHINE LEGS

Standard leg plates

T/C-2400-M leg diameter	4 in / 10 cm
-------------------------	--------------

T/C-3600-M leg diameter	4 in / 10 cm
-------------------------	--------------

AVAILABLE VARIATIONS

T-2400-M Texture machine

C-2400-M Cure machine

TC-2400-M Texture/Cure machine

T-3600-M Texture machine

C-3600-M Cure machine

TC-3600-M Texture/Cure machine



TEXTURING CARRIAGE

Texturing carriage with a movable short lifting device on each machine end will pick up and lower pans to prevent texturing combs from damaging concrete
Dual chain drive using 2050 chain

SPRAY CURE PLATFORM

150 gal / 568 L poly tank with hydraulically powered pump, continuous jet mixing and material transfer capabilities
Optional: portable pressure washer and barrel top sprayer

CAPABILITIES

With the correct options and machine build, the T/C-2400-M and T/C-3600-M are capable of:
Longitudinal Texturing/Curing
Transverse Texturing/Curing
Transverse Texturing and Longitudinal curing

OPTIONS

The T/C-3600-M and T/C-2400-M provide versatile solutions for your texture/cure needs. Both machines can be outfitted to either texture or cure or both depending on your job specifications. The T/C-3600-M and T/C-2400-M offer a variety of travel options including rubber tire, concave and flat flanged bogies. A massive variety of options and variations make the T/C-3600-M and T/C-2400-M ideal machines for small to mid-sized texture/cure jobs.



WORKS FOR YOU.™

HEAVY HIGHWAY AND AIRPORT SOLUTIONS

Terex Bid-Well offers a full line of road, heavy highway and airport paving products to help you finish the job. Our texture cure machines, when accompanied by a 5000 or 6500 model paver and workbridge, provide a full solution for any road, heavy highway or airport paving project. For more than half a century Terex Bid-Well has been providing product, consultation, service and engineering solutions to contractors. Terex Bid-Well is here to Work for You. For more information please contact your regional Sales Manager at 1-800-843-9824 or visit us at www.bid-well.com



5000 HEAVY HIGHWAY PAVER



6500 AIRPORT PAVER



WORKBRIDGE

www.bid-well.com

Effective Date: August 2011. Product specifications and prices are subject to change without notice or obligation. The photographs and/or drawings in this document are for illustrative purposes only. Refer to the appropriate Operator's Manual for instructions on the proper use of this equipment. Failure to follow the appropriate Operator's Manual when using our equipment or to otherwise act irresponsibly may result in serious injury or death. The only warranty applicable to our equipment is the standard written warranty applicable to the particular product and sale and Terex makes no other warranty, express or implied. Products and services listed may be trademarks, service marks or trade-names of Terex Corporation and/or its subsidiaries in the USA and other countries. All rights are reserved. Terex is a registered trademark of Terex Corporation in the USA and many other countries. Copyright 2011 Terex Corporation.

Terex Bid-Well PO Box 97, Canton, SD 57013 USA
Tel +1 605 987 2603 Fax +1 605 987 2605 www.bid-well.com



TEREX | **BID-WELL**