



TECHNICAL DATASHEET



AT22-2

PICK AND CARRY CRANE



MAXIMUM CAPACITY
22t



MAXIMUM BOOM LENGTH
17.9m



MAXIMUM HOOK HEIGHT
17m

terex.com/franna

OVERVIEW

The AT22-2 is a mid-sized, mobile pick and carry crane with a maximum lifting capacity of 22 tonne (24 USt). Boasting maximum safety features and superior capabilities than that of other pick and carry cranes in the field, the AT22-2 is a logical choice for customers who cover a wide range of applications.

CE Certified and approved for on-highway use in the UK.

KEY FEATURES AND BENEFITS:

- ▶ 22 tonne at 1.4m radius
- ▶ 1.7 tonne at 15.8m radius
- ▶ 17m maximum hook height
- ▶ 16.8 tonne capacity on 4 part hook block
- ▶ Single line pull 4.2 tonne
- ▶ Dynamic LMI (patent protected)*
- ▶ Safety Radar (patent pending)
- ▶ Wide stance boom lift cylinders enhance operator's vision.
- ▶ Easy access to all key maintenance points
- ▶ Modern cabin design ensures maximum comfort for the operator



TECHNICAL DESCRIPTION

01. Boom

Maximum boom length	17.9m
Maximum hook height	17m
Boom elevation angle range	-6° / 60°
Maximum hook height with jib	20m
Articulation	40° R / 40° L
Machinery hook (rhino)	10 tonne

02. Winch

Maximum line pull	4.2 tonne
Two speed winch	38m/min 76m/min
Hook block (4 part)	16.8 tonne maximum rated capacity

03. Engine & Transmission

Standard engine	Mercedes OM936
Engine power	210kW
Engine torque	1200Nm
Fuel Type	Diesel
Fuel tank capacity	440 litres
Transmission	Allison 6 speed
Transfer case	ZF 2:1 Ratio
DEF tank capacity	38 litres
Emissions compliance	Tier 4f/Stage 5

04. Hydraulic System

Axial piston pump	62cc/rev
Maximum pump flow rate	130 litres/min
Maximum working pressure	250 bar
Hydraulic tank capacity	200 litres

05. Chassis

Front Axle	8,000 kg
Rear Axle	12,000kg
Axle total	20,000 kg
Turning radius	7.8m
Tyre Size	12.00 x 20

06. Brakes & Suspension

Brake System	Air operated drum brakes with ABS
Suspension	Two semi elliptic springs on front and rear axle plus torsion bar on front axle for stability

07. Vehicle Performance

Maximum rated travel speed	80 km/h
----------------------------	---------

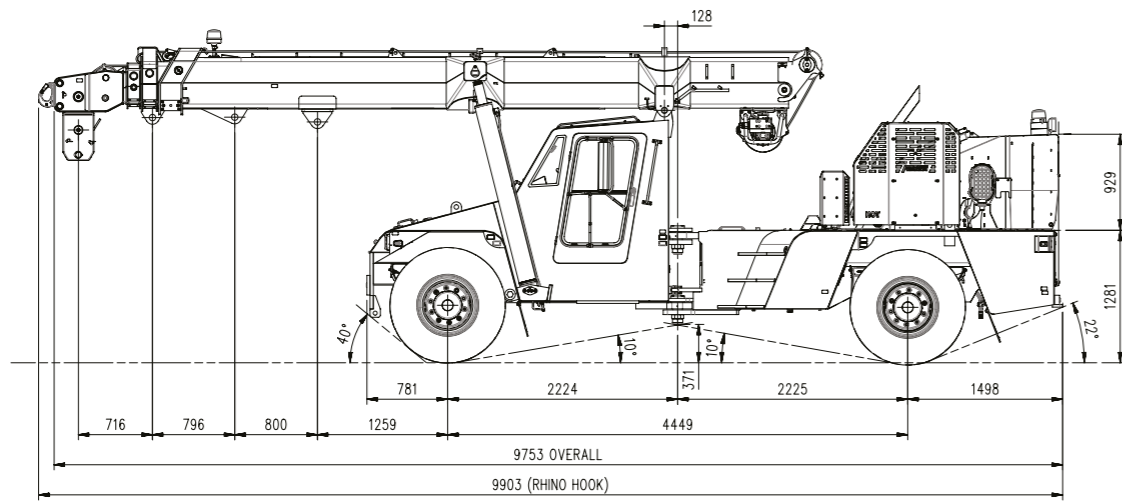


*Refer to www.terex.com/en/company/intellectual-property/franna-patents for current patent details

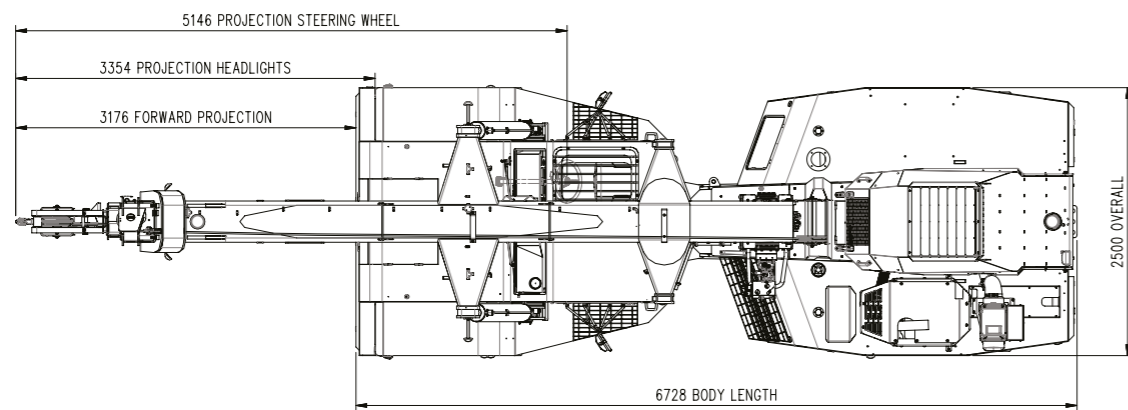
DIMENSIONS / AREA OF OPERATION

RADIUS LOAD CHART

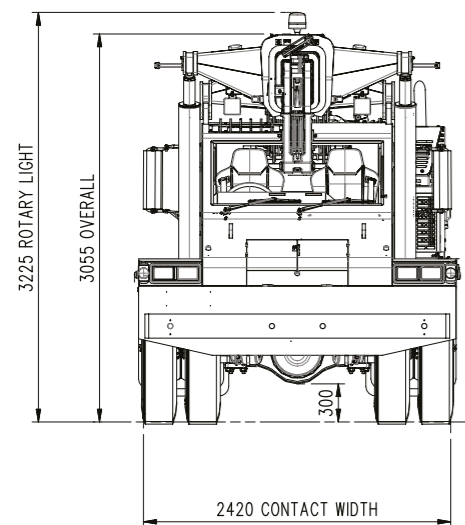
Side view



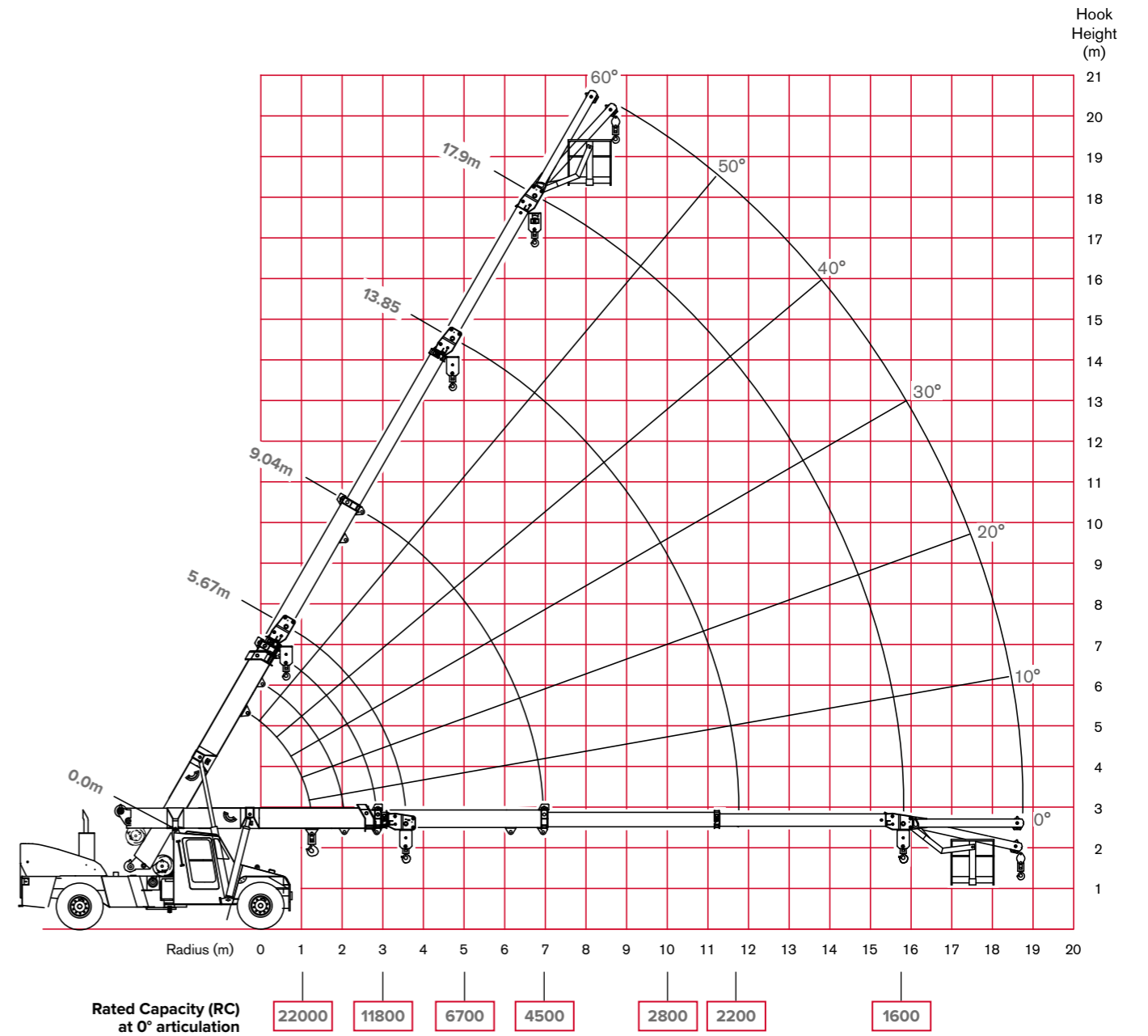
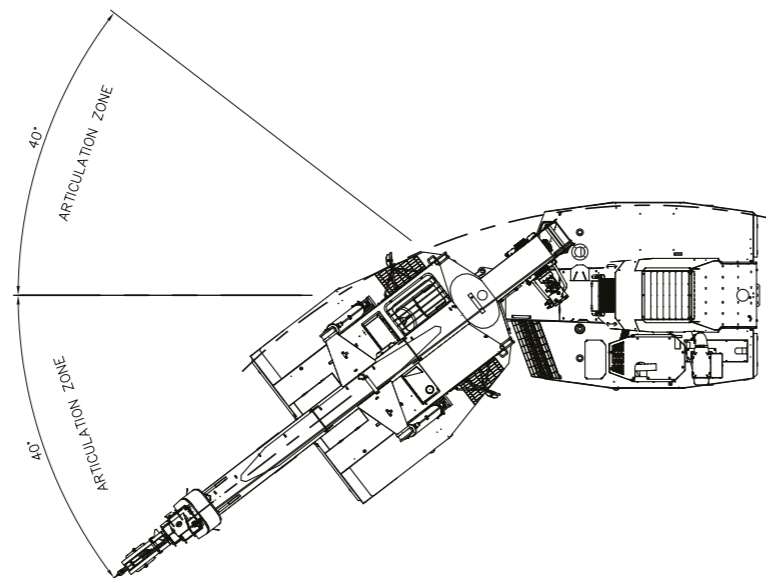
Aerial view



Front View



Area of operation



NOTE: Rated Capacity values shown are for the Pick and Carry Chart.

LOAD CHART

RATED CAPACITY CHART - FALL BLOCK

COUNTERWEIGHT: NONE
 POSITION: N.A.
 STANDARD: ISO 4305

Duty: **001**

Rad	BOOM PIVOT TO HEAD SHEAVES - 3rd BOOM RETRACTED													Rad	
	5.67	6.00	6.50	7.00	7.50	8.00	8.50	9.00	9.50	10.50	11.50	12.50	13.50		13.85
1.5	16500	15900	15200												1.5
	16500	15900	15200												
2.0	16800	16800	16400	15700	15100										2.0
	16100	16100	14600	13400	12400										
2.5	14400	14400	14400	14300	14300	13900	13300								2.5
	13700	13700	13700	13700	13700	13600	13300								
3.0	11800	11800	11800	11800	11800	11800	11700	11600							3.0
	11300	11300	11300	11200	11200	11200	11200	10700							
3.5	10000	10000	10000	10000	10000	9900	9900	9900	9300						3.5
	9500	9500	9500	9500	9500	9500	9500	9500	9400	8700					
4.0	9500	8600	8600	8600	8600	8600	8600	8600	8600	8600	7000				4.0
	9100	8200	8200	8200	8200	8200	8200	8200	8100	8100	7000				
4.5	8400	7600	7600	7600	7300	6800	6500	6100	5800	5300	4900				4.5
	(3.6)	0	21	30	36	40	44	47	50	54	58				
5.0			7600	7500	7500	7500	7500	7500	7500	6500	6000				5.0
			7200	7200	7200	7200	7200	7100	7100	7100	6500	6000			
6.0			6600	6600	6600	6300	5900	5600	5300	4800	4500				6.0
			(4.5)	20	29	35	39	43	46	51	55	58			
7.0			6700	6700	6700	6700	6700	6700	6600	6100	5600	5200			7.0
			6400	6300	6300	6300	6300	6300	6300	6300	6100	5600	5200		
8.0			5900	5900	5800	5400	5100	4900	4400	4100	3800	3500			8.0
			0	20	28	33	38	42	47	52	55	58			
9.0			6000	5400	5400	5400	5400	5400	5400	5400	5000	4600	4500		9.0
			5700	5100	5100	5100	5100	5100	5100	5100	5100	5000	4600	4500	
10.0			5200	4700	4700	4500	4200	3800	3500	3300	3000	3000			10.0
			(5.5)	0	19	26	32	40	45	50	53	54			
11.0			4900	4500	4500	4500	4500	4500	4500	4200	3900				11.0
			4700	4200	4200	4200	4200	4200	4200	4200	4200	3900			
11.83			4300	3900	3900	3400	3100	2800	2600	2600					11.83
			(6.5)	0	18	30	38	43	48	49					
13.85			4100	3800	3800	3800	3600	3600							13.85
			3900	3600	3600	3600	3600	3600							
13.85			3600	3200	2800	2500	2300	2300							13.85
			(7.5)	17	29	36	42	43							
13.85			3500	3200	3200	3200	3200								13.85
			3300	3100	3100	3100	3100								
13.85			3000	2600	2300	2100	2000								13.85
			(8.5)	16	28	35	37								
13.85			3000	2800	2800	2800									13.85
			2800	2600	2600	2600									
13.85			2500	2200	1900	1800									13.85
			(9.5)	15	27	29									
13.85			2600	2500	2500										13.85
			2500	2300	2300										
13.85			2100	1800	1700										13.85
			(10.5)	15	19										
13.85			2300	2200											13.85
			2200	2100											
13.85			1800	1700											13.85
			(11.5)	0											

WINCH RATED CAPACITY

SINGLE PART 4200
 TWO PARTS 8400
 FOUR PARTS 16800

UNITS:

- ANGLES IN DEGREES
- LENGTHS IN METRES
- LOAD IN KILOGRAMS

KEY:

7500	RC @ ARTIC: 0°	PITCH: -2.3	ROLL: -0.6
7100	RC @ ARTIC: 25°	PITCH: -2.3	ROLL: -0.6
4800	RC @ ARTIC: 40°	PITCH: -2.3	ROLL: -0.6
51	BOOM ANGLE		
(4.5)	RADIUS AT ZERO BOOM ANGLE		

Note: Pitch & Roll angles indicated reference the cranes chassis angles, for other chassis angles refer to Franna Lift Planner.

LOAD CHART

RATED CAPACITY CHART

COUNTERWEIGHT: NONE
 POSITION: N.A.
 STANDARD: ISO 4305

Duty: **003**

FALL BLOCK MANUAL EXTENDED

Manual Ext'n MAX LENGTH 17.9	
Max Radius	RC
7.43	2700
	2200
	58
9.39	2400
	1700
11.61	50
	2200
	1300
13.42	40
	2000
	1200
14.76	30
	1800
15.59	1100
	10
15.88	1600
	1100
	0

NOTE:

17.9m BOOM LENGTH INCLUDES MANUAL 3RD EXTENSION.
 RATINGS FOR MANUAL EXTENSION ARE STRUCTURAL & BASED ON BOOM ANGLE, NOT RADIUS. THE RATINGS DO NOT CHANGE IF THE POWER SECTIONS ARE RETRACTED WITH THE MANUAL EXTENDED.

UNITS:

- ANGLES IN DEGREES
- LENGTHS IN METRES
- LOAD IN KILOGRAMS

KEY:

1800	RC @ ARTIC: 0°	PITCH: -2.3	ROLL: -0.6
1100	RC @ ARTIC: 40°	PITCH: -2.3	ROLL: -0.6
20	Boom Angle		

Note: Pitch & Roll angles indicated reference the cranes chassis angles, for other chassis angles refer to Franna Lift Planner.

OUR LOCATIONS



Brisbane (Head Office)

Terex Australia Pty Ltd
585 Curtin Avenue East (PO Box 1396)
Eagle Farm QLD 4009, Australia

Tel: +61 7 3868 9600

Fax: +61 7 3268 2489

Services: Manufacturing, Sales, Service, Parts

Sydney

Terex Australia Pty Ltd
114 Hassall Street
Wetherill Park NSW 2164, Australia

Tel: +61 2 8786 4444

Fax: +61 2 8786 4455

Services: Sales, Service, Parts

Melbourne

Terex Australia Pty Ltd
133 Logis Boulevard
Dandenong South VIC 3175, Australia

Tel: +61 3 8794 4170

Fax: +61 3 9551 8143

Services: Sales, Service, Parts

Perth

Terex Australia Pty Ltd
39 Catalano Road
Canning Vale WA 6155, Australia

Tel: +61 8 9232 0000

Fax: +61 8 9232 0051

Services: Sales, Service, Parts

24/7 Support: 1800 837 395 or EAG.ProductSupport@terex.com

Email: franna@terex.com

The material in this document is for information only and is subject to change without notice.
Franna* assumes no liability resulting from errors or omissions in this document, or from the use of the information contained herein.
Due to continual product development we reserve the right to change specifications without notice. Product performance figures given in this brochure are for guidance purposes only, this information does not constitute an expressed or implied warranty or guarantee, but shows test examples. These results will vary depending on application. Photographs are for illustrative purposes only; some or all of the machines in the illustrations may be fitted with optional extras. Please check with your Dealer for details on optional extras.
Published and Printed in August 2025.



www.terex.com/franna