



TECHNICAL DATASHEET



AT44 US

PICK AND CARRY CRANE



MAXIMUM CAPACITY
44 USt



MAXIMUM BOOM LENGTH
65ft



MAXIMUM HOOK HEIGHT
62ft

terex.com/franna

OVERVIEW

The AT44 US is the largest pick and carry crane in the Franna product range and has been specifically designed for higher capacity lifting applications. The 3-axle design distributes the weight of the crane across its axles evenly. The control system can raise axle 3 to improve the maneuverability by reducing the turning circle.



KEY FEATURES AND BENEFITS:

- ▶ 44 USt at 3'7" radius on lug
- ▶ 34.5 USt at 7' radius on 8 part hook block
- ▶ 22 USt on machinery (Rhino) hook
- ▶ 62 ft maximum hook height
- ▶ Single line pull 8600 lb
- ▶ Dynamic LMI (patent protected)*
- ▶ Safety Radar (patent pending)
- ▶ Designed to B30.5
- ▶ Full width isolated cabin ensures excellent visibility
- ▶ Traction Control
- ▶ High strength boom with easy maintenance
- ▶ Hydro-pneumatic suspension enhances roadability

*Refer to www.terex.com/en/company/intellectual-property/franna-patents for current patent details

TECHNICAL DESCRIPTION

01. Boom

Maximum boom length	65ft
Maximum hook height	62ft
Boom elevation angle range	-5°/60°
Articulation	35° R / 35° L
Fixed lug	44 USt
Machinery hook (rhino)	22 USt

02. Winch

Maximum line pull	8600 lb
Two speed winch	124 ft/min / 249 ft/min
7 Part Hook block	30.2 USt
Optional 8 Part Hook block	34.5 USt

03. Engine & Transmission

Standard engine	Mercedes OM936
Engine power	308 hp
Engine torque	960 ft-lb
Fuel Type	Diesel
Fuel tank capacity	110 gal
Transmission	Allison 6 speed
Transfer case	ZF 2:1 Ratio
DEF tank capacity	8 gal
Emissions compliance	Tier 4f/Stage 5

04. Hydraulic System

Axial piston pump	8.2 in3/rev
Maximum pump flow rate	66 gal/min
Maximum working pressure	5000 psi
Hydraulic tank capacity	110 gal

05. Chassis

Front Axle (Tare / GVM)	24470 lb / 26455 lb
Axle 2 (Tare / GVM)	20285 lb / 22045 lb
Axle 3 (Tare / GVM)	20285 lb / 22045 lb
Axle Total (Tare / GVM)	65040 lb / 70545 lb
Transport weight	67000 lb
Turning circle (Highway)	33 ft
Turning circle (crane mode)	31 ft
Front Tires	385/95 x R25
Rear Tires	315/80 x R22.5

06. Brakes & Suspension

Brake System	Air operated disc brakes with ABS
Suspension	Hydro pneumatic suspension

07. Vehicle Performance

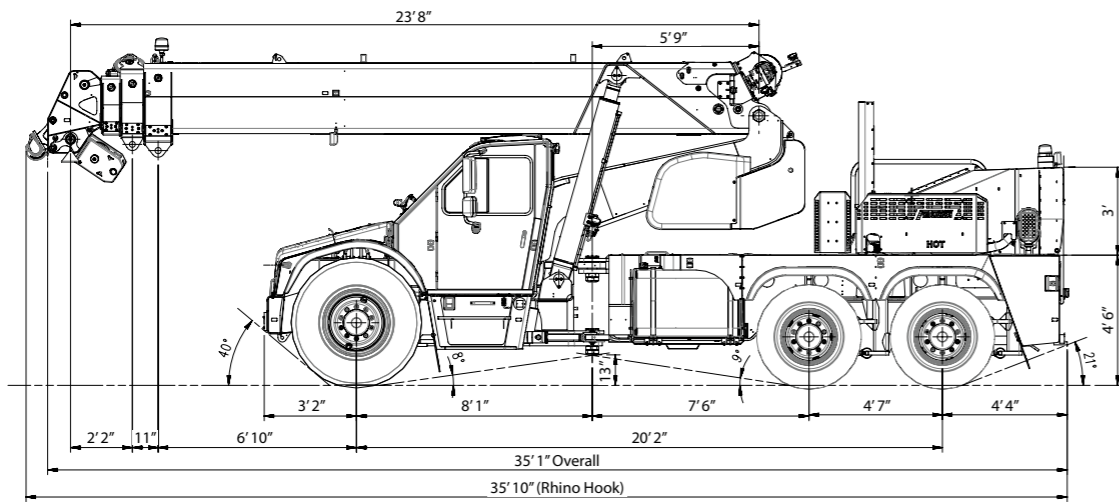
Maximum rated travel speed	50 mph
----------------------------	--------



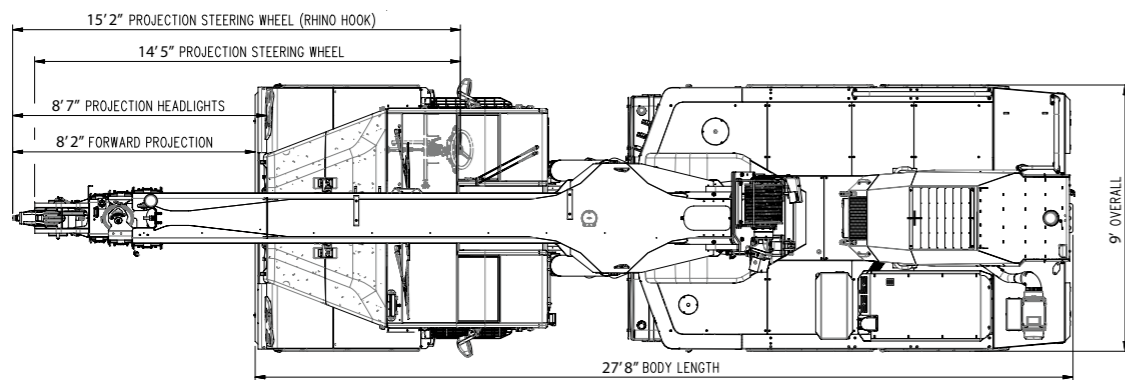
DIMENSIONS / AREA OF OPERATION

RADIUS LOAD CHART

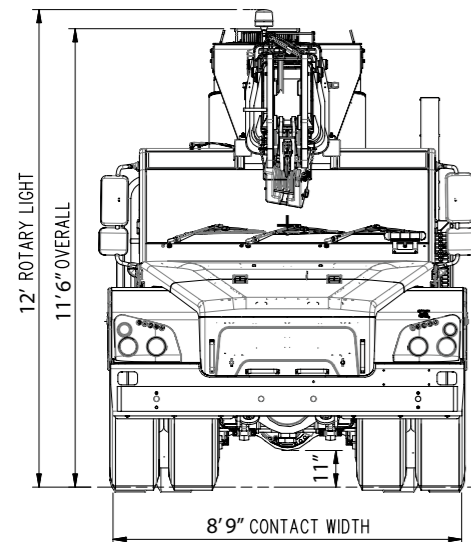
Side view



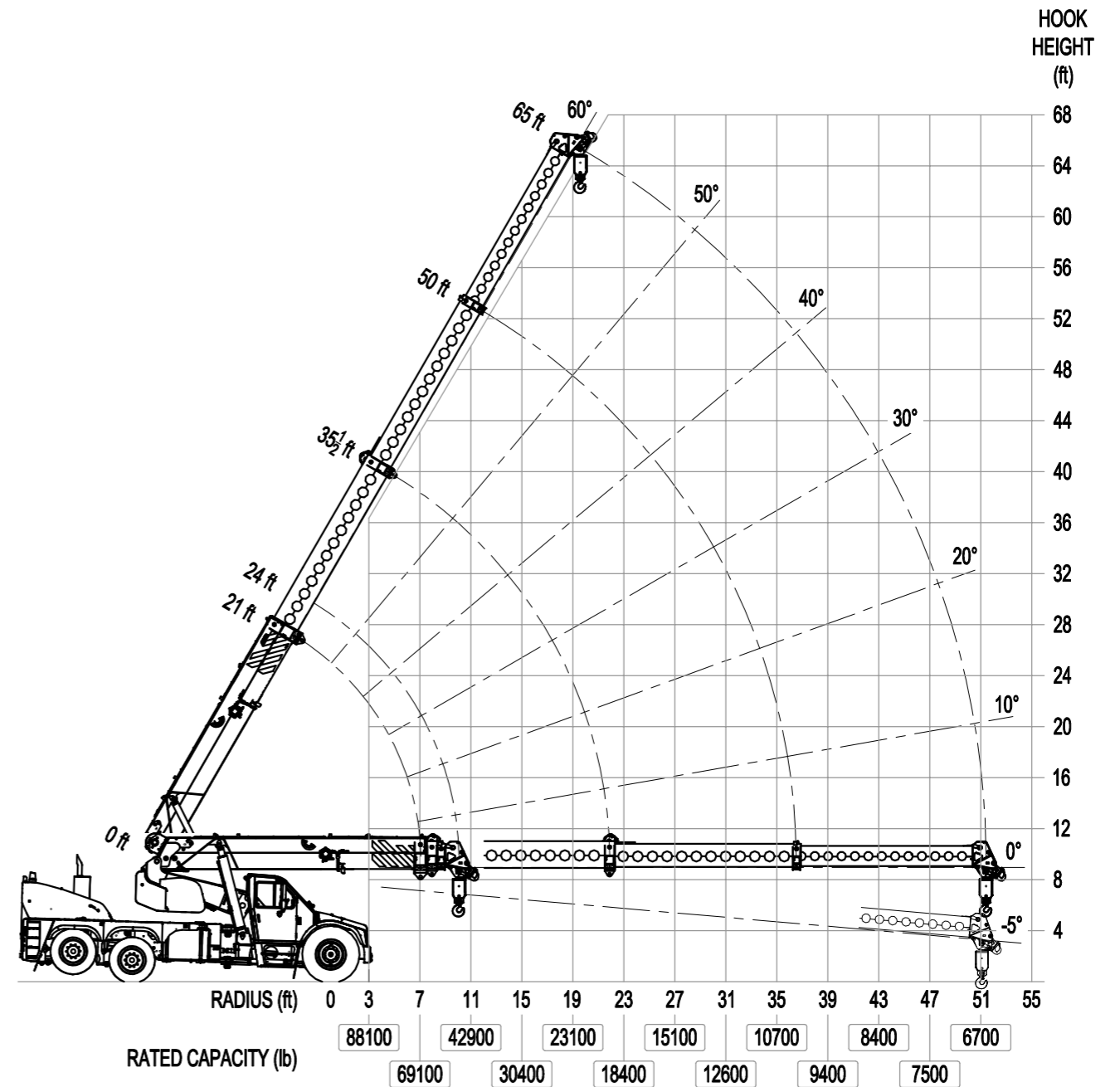
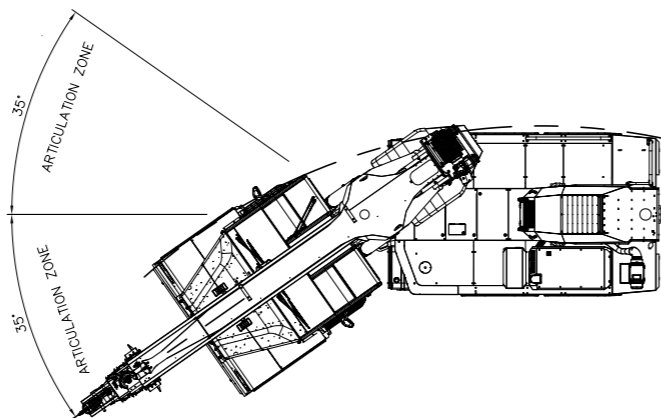
Aerial view



Front View



Area of operation



NOTE: Rated Capacity values shown are for the Pick and Carry Chart. The Static Chart will give higher rated capacities.

OUR LOCATIONS



Brisbane (Head Office)

Terex Australia Pty Ltd
585 Curtin Avenue East (PO Box 1396)
Eagle Farm QLD 4009, Australia

Tel: +61 7 3868 9600

Fax: +61 7 3268 2489

Services: Manufacturing, Sales, Service, Parts

Louisville

Terex USA, LLA
11001 Electron Drive,
Louisville, Kentucky, 40299 USA

Tel: +1 502 736 5200

Fax: +1 502 736 5202

24/7 Support: +61 1800 837 395 or EAG.ProductSupport@terex.com

Email: franna@terex.com

The material in this document is for information only and is subject to change without notice.
Franna™ assumes no liability resulting from errors or omissions in this document, or from the use of the information contained herein.
Due to continual product development we reserve the right to change specifications without notice. Product performance figures given in this brochure are for guidance purposes only, this information does not constitute an expressed or implied warranty or guarantee, but shows test examples. These results will vary depending on application. Photographs are for illustrative purposes only; some or all of the machines in the illustrations may be fitted with optional extras. Please check with your Dealer for details on optional extras.
Published and Printed in August 2025.



www.terex.com/franna