

FR25 XS

PICK AND CARRY
CRANE



MAXIMUM RATED CAPACITY
25 t



MAXIMUM HOOK HEIGHT
21.3 m
(with fly jib)



HD WINCH
17.5 ton capacity
with 6 Falls



COMPACT MACHINE
2.98 m
(Machine Height)



STABILITY
75%



OVERVIEW

Meet the all-new FR25, a high-performance pick-and-carry crane designed for heavy-duty applications. With a 25-tonne lifting capacity and 75% stability, this powerhouse sets a new benchmark in safety, efficiency, and versatility.

Engineered for modern demands, the FR25 boasts a snatch block with 17.5-tonne capacity and CEV Stage V emission compliance, ensuring eco-friendly operations. Its double-cabin design, coupled with a robust U-section fabricated boom and heavy-duty components, provides superior strength and maneuverability, even in confined spaces with more productivity.

*Accessories Solution:

Safe Load Indicator, 3 Stack Lamp
SLI with Safe operation feature,
Human proximity sensor,
Outrigger Engagement warning,
Boom Angle Indicator, Machine Level indicator
Beacon Light, Cabin Safety grill, Rear View camera,
Music player



Connect



HD Winch



Smooth Clutch



Dual Luff Cylinder



Manual Boom Extension rod



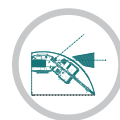
Lowest Turning Radius



5 Hook Positionings



U-Section Boom



Articulation Limit Switch



Winch Mounted under Boom



TECHNICAL DESCRIPTION

01. Boom

Maximum boom length (manual extn.)	18.3 m
Maximum boom length (fly jib)	20.65 m
Maximum tip height (fly jib)	21.3 m
Boom elevation angle range	-10°/65°
Articulation	40° R / 40° L
Fixed lug	25 ton
Machinery hook (rhino)	8 ton

02. Winch

Single speed winch (raising 4th layer)	51 m/min
6 Part Hook block	17.5-ton max rated capacity, fully compensated hook height whilst telescoping the boom.

03. Engine & Transmission

Standard engine	VECV E494 CEV Stage V
Engine power	74 kW@2200 rpm
Engine torque	430 Nm
Fuel Type	Diesel
Fuel Capacity	270 litre
Transmission	VECV ET60 Synchronesh gear box with 10 forward and 2 reverse speeds with crane/travel mode selector switch
Clutch	Single, dry type friction clutch plate (self-adjusting)
Clutch Actuation	Pneumatic assisted hydraulic clutch with clutch booster provision

04. Hydraulic System

High Pressure Vane pump	46 cc/rev
Maximum working pressure	220 bar
Hydraulic Oil	270 litre

Hydraulic Cooler Installed for longer oil life

05. Axle Loadings Travel (Crane) Mode & Turning Radius

Front Axle	9530(8970) kg
Rear Axle	10171(13030) kg
Total	19700(22000) kg
Turning Radius	8.0 m

06. Brakes

Service	Fully air operated 'S'cam dual circuit brakes on front & rear axles
Parking	Air operated, spring actuated, fail safe brakes

07. Tyres & Rims

Front	12.00x24-20PR (4 No.)
Rear	12.00x24-20PR (4 No.)

08. Electricals

System	12V DC
EMC certified	

09. Steering

Steering	Full power orbitrol with twin cushioned double acting rams with 40 deg articulation either side
----------	---

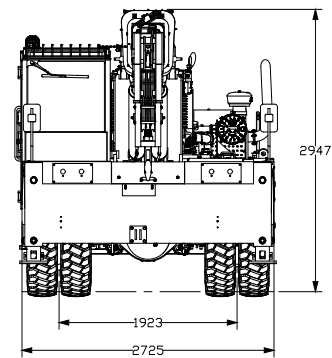
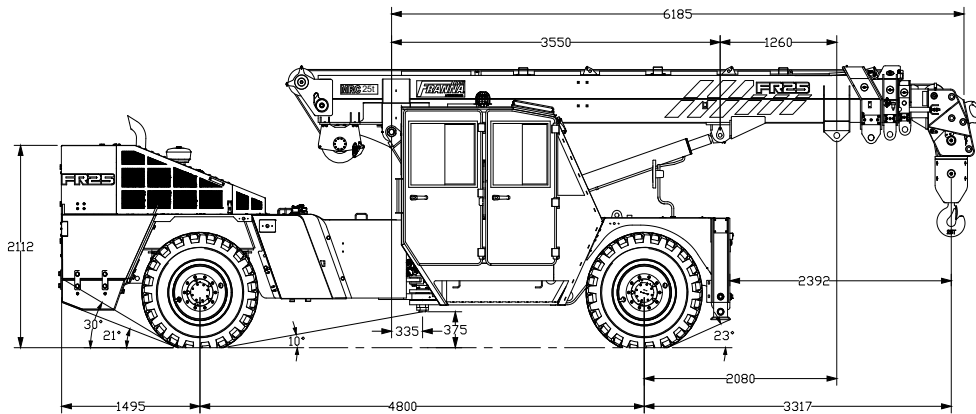
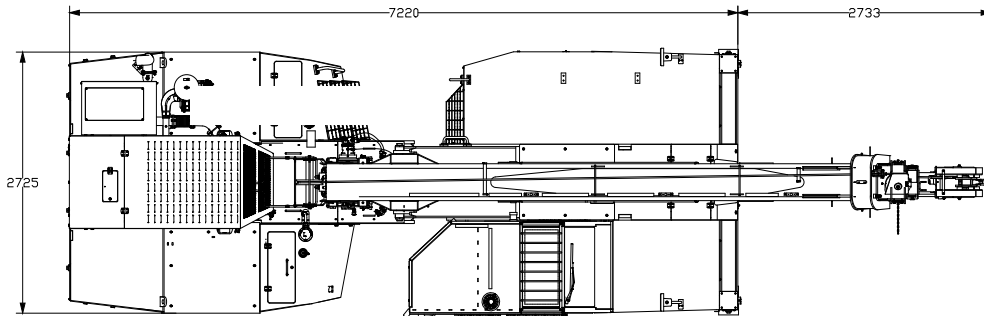
10. Vehicle Performance & Drive

Max Speed	48 km/h
Gradeability	40% (unladen)
Drive	4x4

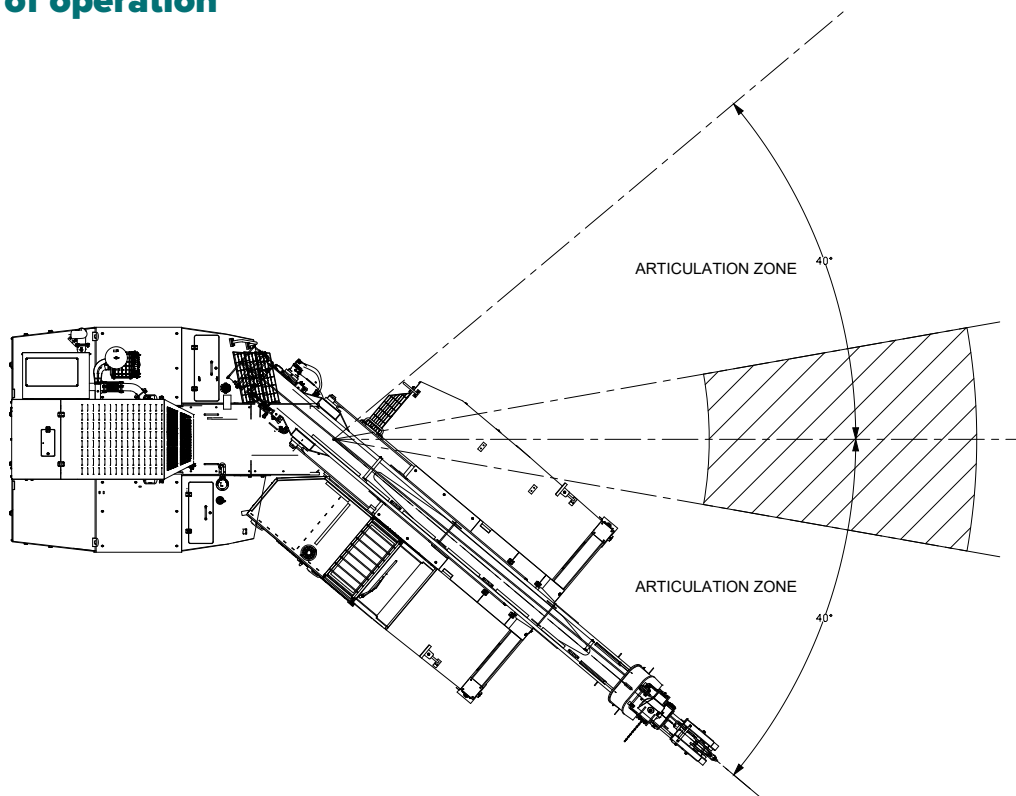


DIMENSIONS / AREA OF OPERATION

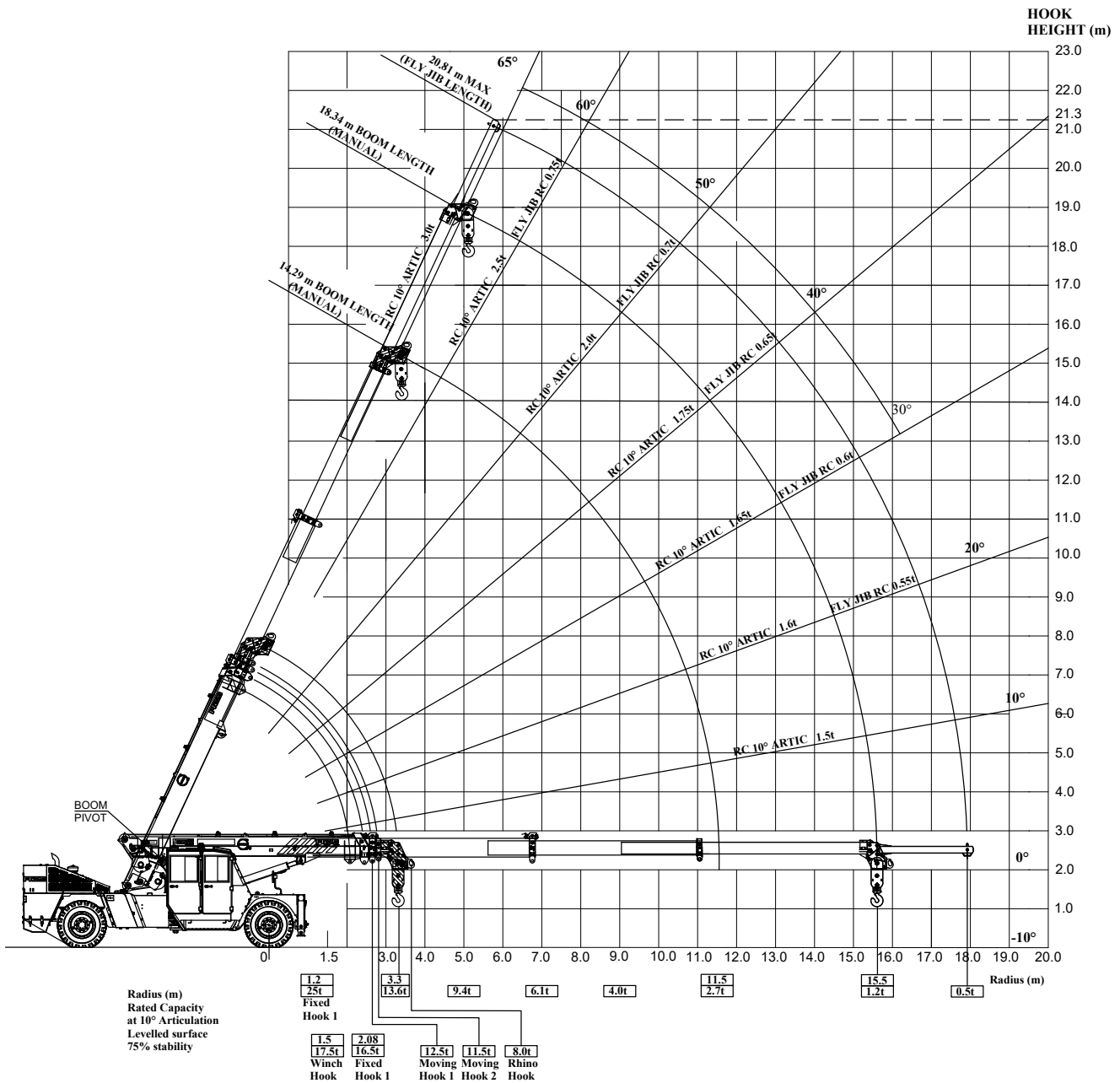
Machine view (All dimensions are in mm)



Area of operation



RADIUS LOAD CHART



Note:

- Weight of slings & hook block to be added to load.
- Read and understand warning notes before operating crane.
- Crane shall not be overloaded beyond 25ton at any condition.
- Technical modifications reserved. All dimensions & weights are variable within $\pm 5\%$ over Indicated Values.
- Rated Capacity Values shown are for the Pick and Carry chart.
- Rhino Hook & Fly Jib shown are provided as per customer request.
- Rope Dia 13mm with 6 Fall Block

LOAD CHART

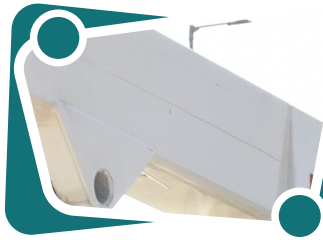
RATED CAPACITY CHART - LIFTING ON WINCH FALL BLOCK																		
RADIUS	BOOM LENGTH (m)																	
	5.98	6.50	7.00	7.50	8.00	8.50	9.00	9.50	10.00	10.50	11.00	11.50	12.00	12.50	13.00	13.50	14.00	14.18
1.5	14200	14400	14600	14800	17300	17500	16400	14750	13600									
	13500	14000	14250	14500	14750	14900	14000	12650	11700									
2.0	46	50	54	56	590	61	62	64	65									
	13200	13400	13300	13400	13600	13700	13900	12600	11600	10700	10100							
2.5	39	44	48	52	54	57	59	61	62	64	65							
	13200	13400	13200	13200	13300	13500	12900	11700	10800	10000	9400	8500	8100	7700				
3.0	31	37	42	46	50	53	55	57	59	61	62	63	65	66				
	13200	13400	13200	13200	13200	13300	12100	11000	10100	9300	8700	7900	7500	7200	6900	6700		
3.5	19	29	36	41	45	48	51	53	56	57	59	61	62	63	64	65		
	13200	13300	13300	13200	13200	12800	11400	10300	9400	8800	8200	7300	7000	6700	6500	6300	6100	6000
4.0	(3.31)	17	28	34	39	43	47	50	52	54	56	58	59	60	62	63	64	64
	12200	11500	11500	11500	11400	10700	9700	8900	8300	7700	6900	6600	6300	6100	5900	5700	5600	5600
4.5	(3.76)	17	27	33	38	42	45	48	51	53	55	56	58	59	60	62	63	62
	11000	10300	10300	10300	10300	10300	9700	8900	8300	7700	6900	6600	6300	6100	5900	5700	5600	5600
5.0	(4.26)	16	26	32	37	41	44	47	49	51	53	55	57	58	59	60	62	62
	10600	10100	10100	10100	10000	9200	8400	7800	7300	6500	6200	5900	5700	5500	5300	5200	5200	5200
6.0	(4.76)	15	25	31	36	40	43	46	48	50	52	54	55	57	58	59	60	60
	9400	8900	8900	8900	8700	8000	7400	6900	6100	5800	5600	5400	5200	5000	4800	4600	4500	4400
7.0	(5.26)	(5.76)	15	24	30	34	38	41	44	46	48	50	52	54	55	57	58	58
	8400	7600	7300	7300	7300	6800	6300	5500	5200	5000	4800	4600	4400	4200	4000	3800	3700	3600
8.0	(6.26)	(6.76)	14	22	28	33	36	39	42	44	46	47	49	51	53	55	57	57
	6900	6300	6100	6100	5800	5000	4700	4500	4300	4200	4000	4000	3800	3700	3600	3500	3400	3300
9.0	(7.26)	(7.76)	13	21	27	31	35	38	40	42	44	46	47	49	51	53	55	55
	5800	5300	5200	4600	4300	4100	4000	3800	3700	3600	3500	3400	3300	3200	3100	3000	2900	2800
10.0	(8.26)	(8.76)	12	21	26	30	33	35	38	40	42	44	46	47	49	51	53	53
	5000	4400	4000	3800	3600	3500	3400	3300	3200	3100	3000	2900	2800	2700	2600	2500	2400	2300
11.0	(9.26)	(9.76)	12	20	25	27	30	33	35	38	40	42	44	46	47	49	51	51
	3900	3600	3400	3200	3100	3000	2900	2800	2700	2600	2500	2400	2300	2200	2100	2000	1900	1800
12.3	(10.26)	(10.76)	12	20	25	27	30	33	35	38	40	42	44	46	47	49	51	51
	3300	3100	2900	2800	2700	2600	2500	2400	2300	2200	2100	2000	1900	1800	1700	1600	1500	1400
	(11.3)	(11.5)	12	20	25	27	30	33	35	38	40	42	44	46	47	49	51	51
			2800	2700	2600	2500	2400	2300	2200	2100	2000	1900	1800	1700	1600	1500	1400	1300

KEY:

- SWL (KG) LESS THAN 10 DEG ARTICULATION
- SWL (KG) GREATER THAN 10 DEG ARTICULATION
- BOOM ANGLE OR (RADIUS AT 0 DEG BOOM ANGLE)

Note: Weight of slings & hook block to be added to load
Read and understand warning notes before operating crane

FEATURES & ATTACHMENT

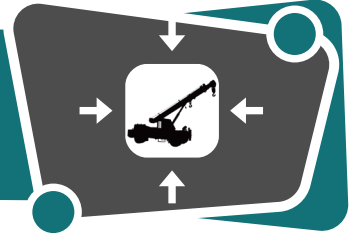


NEUTRAL AXIS WELDING BOOM

Latest boom technology for Heavy duty applications. U section ensures higher lifting capacity with longer life

COMPACT MACHINE

Shortest Turning radius of 8.0 meter makes it ideal machine for City and congested areas.



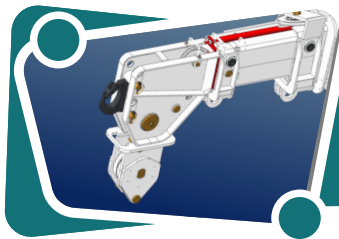
WINCH MOUNTING

Under boom winch ensures safe operations while working in compact area. Ideal for city and industrial applications

75% STABILITY

Higher safety and stability reduces the chances of accident.

75%

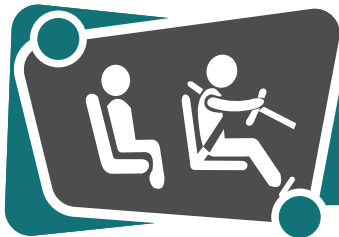


MANUAL EXTENSION ROD

Quick and reliable mechanism for higher height applications

Connec-T

24X7 machine update on location, health and performance on one click



SPACIOUS TWO-PERSON CABIN

Spacious back-to-back cabin for enhanced visibility and comfort.

FIND A DEALER



Scan the QR code to find a dealer in your area or contact:

Email: franna.india@terex.com

Website: www.terex.com/franna

OUR LOCATIONS

South: Hosur Plant

Terex India Private Limited
Plot No : E-18, Expansion-II, Phase-II
SIPCOT, Krishnagiri Road
Hosur - 635 109, Tamil Nadu

Tel: +91 4344 352 200

Dealer Stamp:

North

Terex India Private Limited
907-908, 9th Floor, Palm Spring Plaza,
Golf Course Road, DLF Phase 5, Sector 54
Gurgaon 122 003, Haryana

Tel: +91 74180 24448

West

Terex India Private Limited
Office No. 05-116, Zenia Building Hiranandani Circle,
Hiranandani Business Park
Thane - 400607, Maharashtra

Tel: +91 88709 68884

Terex India
is proud to be
recognised as a



Follow us on
LinkedIn

The information contained in this leaflet is intended to be of general nature.
Terex Corporation reserves the right to change the specifications without prior notice.
All dimensions and weights are variable within $\pm 5\%$

Published and Printed in February 2025
Version 1.2

