


FRANNA
A TEREX BRAND




MINEMASTER



OVERVIEW

For over 40 years, Franna has provided robust lifting solutions to some of the largest mining operations in the world. The **Franna Minemaster** range of pick and carry cranes has been specifically designed to meet the vigorous safety requirements and complex operating environment of the modern day mine site.



AT 40 carrying out maintenance on large haul truck

Franna cranes require no outriggers which allows the operator to set up and start working almost immediately. The compact footprint and unique design of each machine provides unrivalled access to tunnels and other areas of limited space on the mine site. From lifting and laying pipes to changing out engines, it's easy to see why Franna cranes are a popular choice for mining contractors.

APPLICATIONS



MAC 25-4 working 1.3km below ground in Mongolia



Two Franna cranes on call at open pit mine in Indonesia



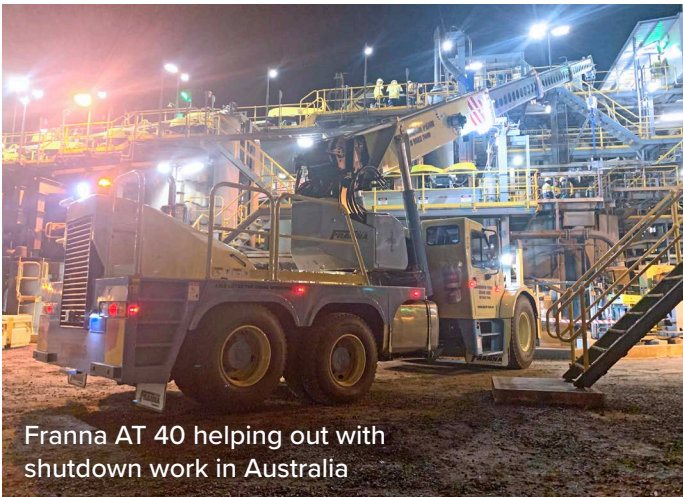
Franna pick and carry crane servicing large excavator



AT 22 ready to go to work at mining operation in Latin America



Operator's view from underground tunnel



Franna AT 40 helping out with shutdown work in Australia



MAC 25 supporting haul trucks at large mine

Franna Minemaster machines can be customised to meet local requirements with an extensive range of mine spec options to choose from. The recommended Franna Minemaster spec includes:

Rear Body Handrails

Fall protection when working on the rear body of the crane

Beka Max Auto Grease

Automatic lubricating system to the articulation, steering and rear luff pivots

15t Spreader Bar

Spreader bar used to rig loads. Can be mounted to the front of the crane or LHS front body.

Spare Wheel & Carrier

Spare wheel mounted to the rear deck of the crane

Holding Brake & Warning Light

Dash light illuminates when the holding brake is engaged and the operator engages a transmission gear

External Overload Warning Lights

External light shows when the crane is at 90% of chart (green), when between 90%-100% of chart (orange) and when over 100% of chart (red)

Fan & Belt Guard

Offers protection when the engine is running and the bonnet is raised

Quaker Style Reverse Alarm

Loud sounding reverse alarm (107dB)

9KG Fire Extinguisher

Handheld fire extinguisher fitted to exterior of cabin.

Dual External Isolators

Lockable external switches, cuts power to the starter motor/batteries.

External Emergency Stop

External mounted emergency stop switch

CAT / Anderson Jump Start

Ability to jump start the crane if the batteries are flat

Examples of common mining duties:

- ✓ Equipment maintenance and breakdowns
- ✓ Engine replacements
- ✓ Changing out wear liners
- ✓ Equipment recovery and towing
- ✓ Lifting and laying pipes
- ✓ Structural steel replacement and repairs
- ✓ Supporting other lifting equipment (cranes, aerial work platforms etc)

Including common mining components such as:

- ✓ Loading shovel cylinders
- ✓ Excavator buckets
- ✓ Final drive units
- ✓ Electric / diesel generators
- ✓ Hydraulic pumps
- ✓ Conveyor rollers
- & much more!

Additional mine spec options available on request

PRODUCT RANGE

There are four machines in the Franna Minemaster range with lift capacities from **15t** (17 US_t) to **40t** (44 US_t)

AT 15-3

- Mercedes OM 906
- 15t (17 US_t)
- 17.9m (58' 8")
- 17m (55' 9")

AT 22

- Mercedes OM 906
- 15t (17 US_t)
- 17.9m (58' 8")
- 17m (55' 9")

MAC 25-4

- Mercedes OM 906
- 25t (27 US_t)
- 18.4m (60' 4")
- 18m (59")

AT 40

- Mercedes OM 906
- 40t (44 US_t)
- 19.8m (64' 11")
- 18m (62' 4")



Engine Capacity Maximum Boom Length Maximum Hook Height

WHY CHOOSE FRANNA MINEMASTER?



Reduce initial setup costs

The versatility of Franna cranes enables them to cover jobs that are often carried out by other types of traditional equipment, ultimately lowering the capital cost of your support fleet.



Lower cost per ton

Franna pick and carry cranes can help to reduce cost per ton with their fast response times and high utilisation on the mine site.



Minimise downtime

By using a Franna crane, downtime associated with scheduled and unscheduled repairs can be reduced (for example, responding to breakdowns in the field). The crane can be used to remove the broken component, carry it to the rebuild/ parts exchange area and bring the replacement component back on its return trip.



Trusted by industry

Franna has been supplying the mining industry since its inception over 40 years ago working with clients such as Rio Tinto, Glencore and BHP.



Suitable for open pit and underground mining

The robust design and superior operating benefits of Franna cranes allows them to thrive in both open pit and underground mining operations.

Did you know?

*In Australia alone, Franna cranes account for approximately **half** of the total mobile crane population!*



AT 40 lifting 22t boom for a mining excavator / shovel



Australia (Head Office)

Terex Australia Pty Ltd
585 Curtin Avenue East (PO Box 1396)
Eagle Farm QLD 4009, Australia

Tel: +61 7 3868 9600

Fax: +61 7 3268 2489

Tel: 1800 837 395

Email: franna@terex.com

United States

Terex Cranes Americas
3147 South 17th Street, Suite 100
Wilmington, NC 28412, USA

Tel: +1 910 395 8552

Fax: +1 910 395 8556

The material in this document is for information only and is subject to change without notice.
Franna® assumes no liability resulting from errors or omissions in this document, or from the use of the information contained herein.
Due to continual product development we reserve the right to change specifications without notice. Product performance figures given in this brochure are for guidance purposes only, this information does not constitute an expressed or implied warranty or guarantee, but shows test examples. These results will vary depending on application. Photographs are for illustrative purposes only; some or all of the machines in the illustrations may be fitted with optional extras. Please check with your Dealer for details on optional extras.
Published and Printed in July 2021.



www.terex.com/franna