

Summary

Project Name: Conversion Project

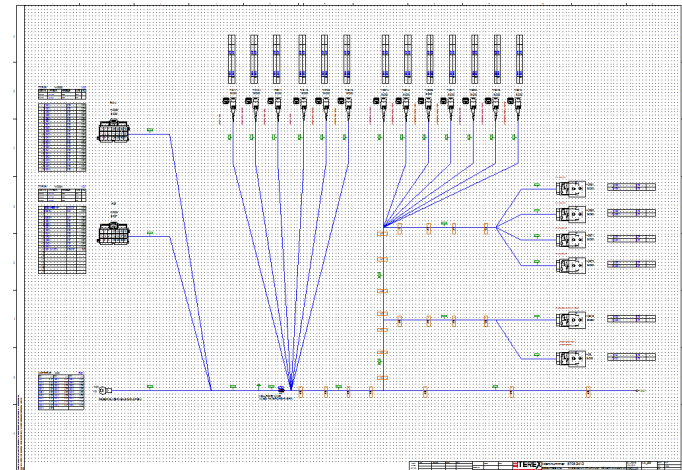
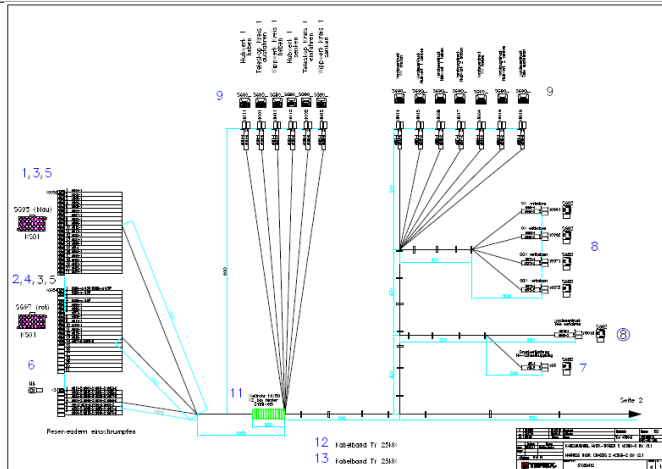
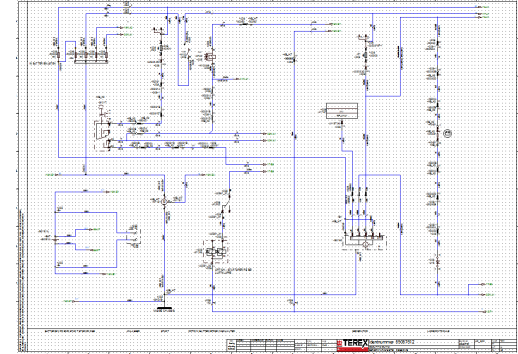
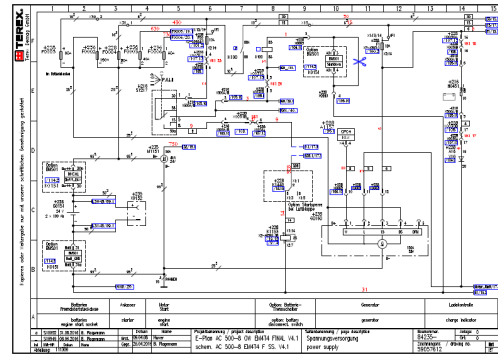
Scope: E-PLAN TO E3 SCHEMATIC CONVERSION FOR CRANE

Software: E3

Electrical design conversion in E3 for Crane from ECS CAD plan

PROCESS :

- Referring input E-Plan CAD schematic file.
- Gathering BOM details for the electrical components, connectors & cables from PDV.
- Preparing Missing parts list from the given E-Plan BOM list & shared information to onsite TM's
- Preparing not available parts in E3 database & shared the list to onsite TM'S.



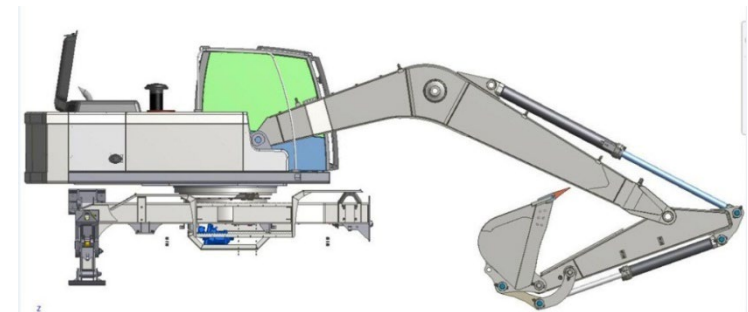
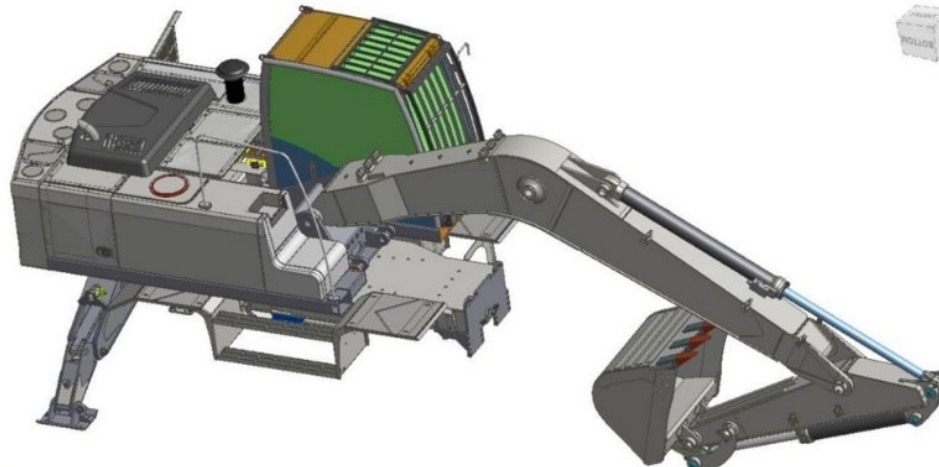
Summary

Project Name: Conversion Project

Scope: E-PLAN TO E3 SCHEMATIC CONVERSION FOR EXCAVATOR

Software: E3

- Typo errors in existing projects removed
- Circuit connections mismatches rectified as per function
- Schematic recreated in E3 with the proper connections and device identity
- Harnesses commonised for two models
- Clamp finalization and harness layout
- Bundle size calculated for clamps and ties selection in 3D routing
- Harness layout created



Summary

Project Name: Conversion Project

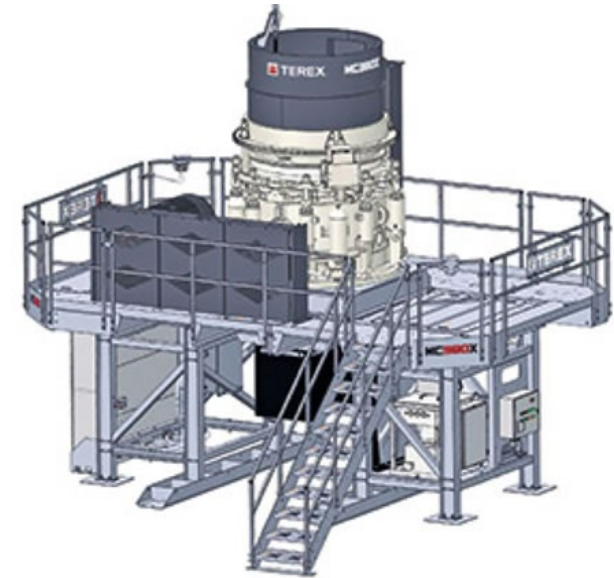
Scope: E-PLAN TO E3 SCHEMATIC CONVERSION FOR MATERIAL PROCESSING

Software: E3

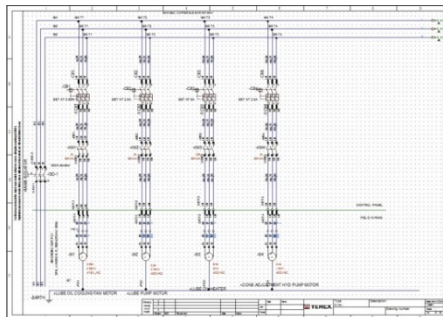
MATERIAL PROCESSING -India,
Scope: Modular Cone Crusher

E3 conversion

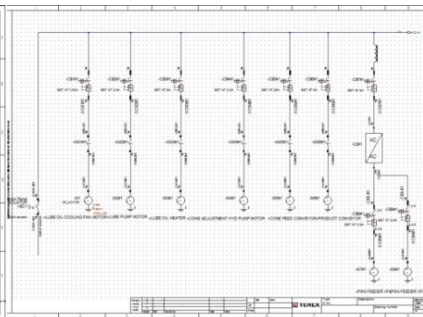
- 3-line Schematic,
- Single line diagram,
- Control Panel General Arrangement &
- Terminal block diagram.



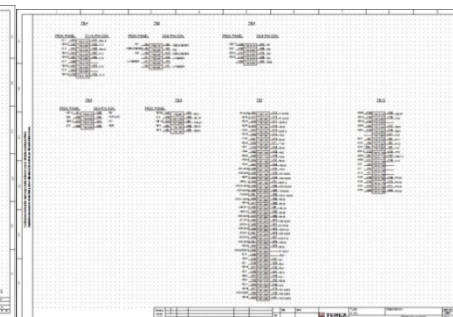
3 Line schematic



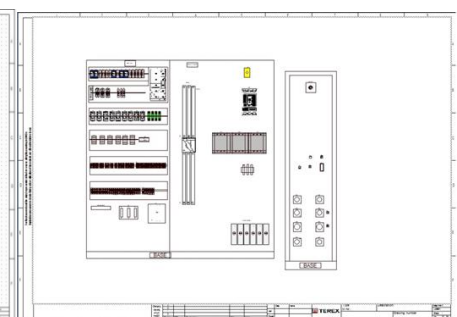
Single line diagram



Terminal Block



Control Panel GA



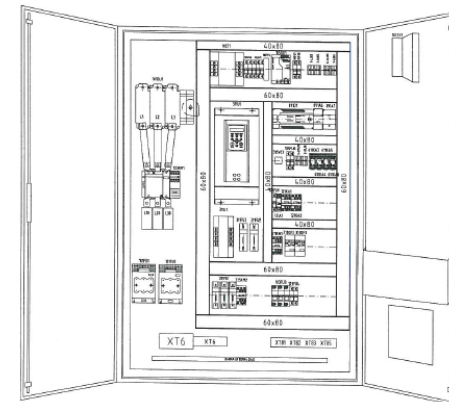
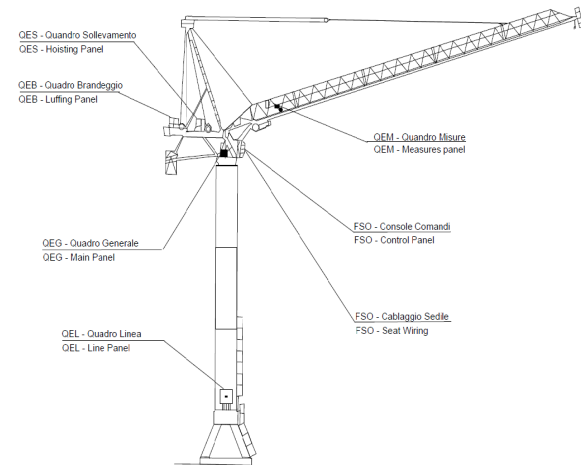
Summary

Project Name: Conversion Project

Scope: Conversion of Control Panel Drawings

Software: E3

- Creating panel drawings such as Main panel, Line panel, Control panel, Luffing panel and hoisting panel.
- Creating all panel drawings in E3 from E Plan , E CAD and other CAD models.
- Worked on all major cranes such as CTL120-140-340, CBR40-60, Luffing JIB, SK415 and Flat top models.
- Schematic design is being done for all Cabin Controls, Line Panel, Travelling Panel and Tower Section Cables.
- Selecting Cabin Controls such as Joystick, Pendent controls & Push buttons as per cabin requirement.
- Selecting Drives, Electric Motors and VFD for cranes.
- Extension cable drawings created for Customized cranes which is more than 150-200mts tall.
- Conversion to Italian Language as per site requirement.
- Preparing BOM and supporting on all E3 requirement and On site support whenever required.



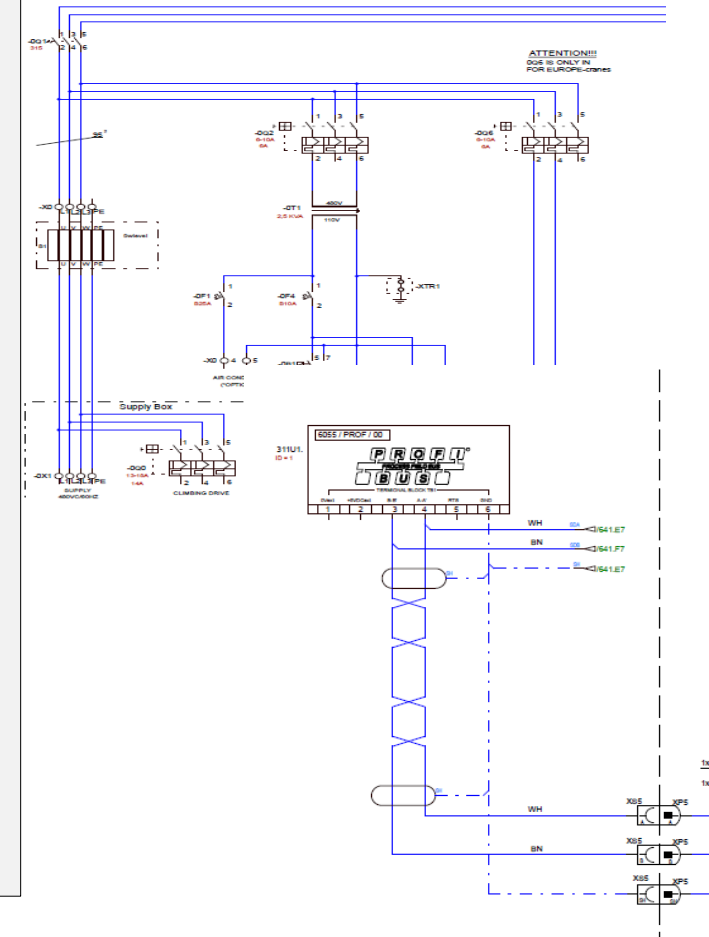
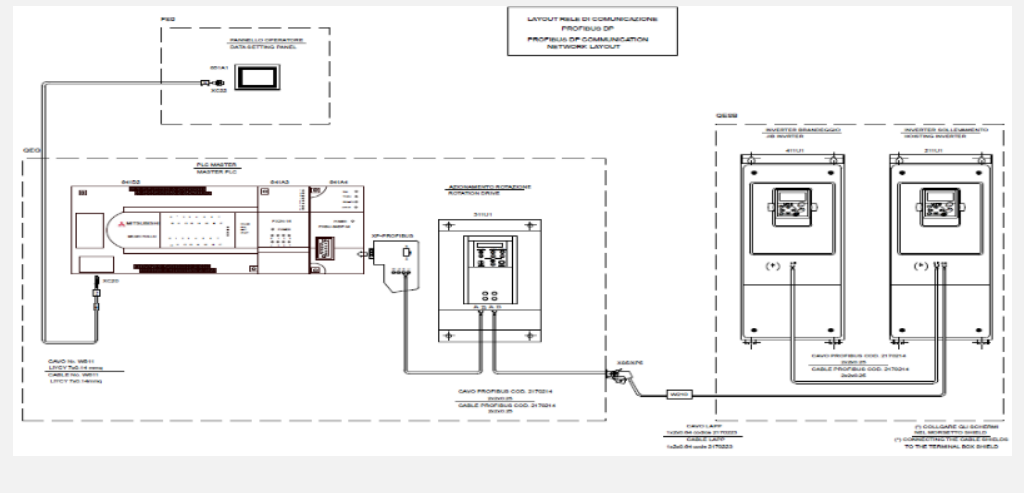
Summary

Project Name: Conversion Project

Scope: Conversion of Control Panel Drawings

Software: E3

- Creating complete schematics for CTL cranes with mitsubshishi drive system.
- Creating complete main panel drawings with 400/460 V system.
- Worked with all machine logics on auxiliary contacts range from 24VDC to 110VAC.
- Creating drawings for Hoisting, Trolley and Travelling motors with 24VDC braking system.
- Designed with Mitsubishi Control system using Profi Bus.
- Selecting Drives, Electric Motors and VFD for cranes.



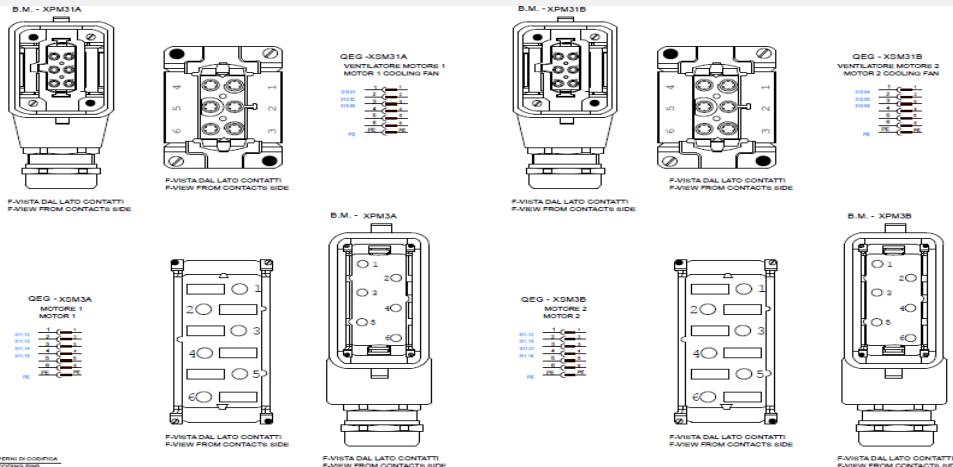
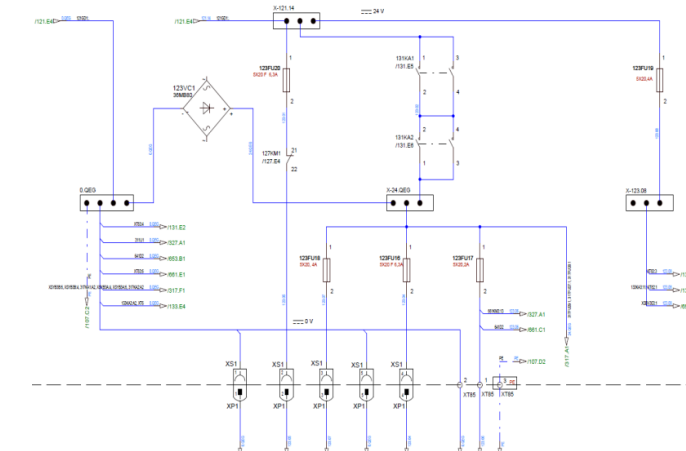
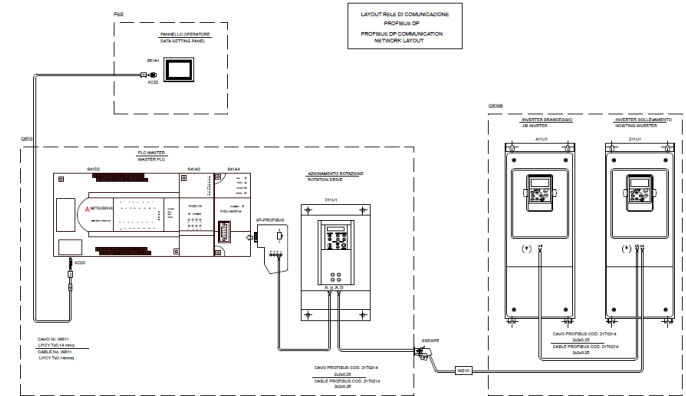
Summary

Project Name: Conversion Project

Scope: Conversion of drawings for Derrick Panels

Software: E3

- Creating Panel for drive units for control system used on operator cabin.
- Creating Terminal box for the climbing towers which is self extendable.
- Created I/O cards (DIGSY CARDS) for different inputs and outputs in cabin.
- Worked on creating all terminals and connectors for control panel.
- Selecting Cabin Controls such as Joystick, Pendent controls & Push buttons as per cabin requirement.



Summary

Project Name: Conversion Project

Scope: Conversion of Cable Extension drawings

Software: E3

- Creating Components and Cables terminals in E3 database.
- Designing of cable drawings for basic 50mts and extension crane which is more than 100 mts tall.
- Schematic design is being done for all Cabin Controls, Line Panel, Travelling Panel and Tower Section Cables.
- Extension cable drawings created for Customized cranes which is more than 150-200mts tall.

