

Summary

Project Name: Testing & Validation

Scope: Testing & Validation for Mini Excavators

- Complete Protobuild, Testing & Validation has been carried out at the Center according to the Testing standards specified.
- Snapshot of the detail Tests carried out:

| SI No. | Test Description |
|--------|-----------------------------|
| 1 | Initial Operation |
| 2 | Machine Test Stand |
| 3 | Weight Distribution |
| 4 | Heat Measurement |
| 5 | Exhaust Back Pressure |
| 6 | Slew(or)Swing Brake |
| 7 | Noise Measurement |
| 8 | Static Drawbar Pull |
| 9 | Lift Capacity(Tipping load) |
| 10 | Arm Digging Force |
| 11 | Bucket Break Out Force |
| 12 | Field Endurance Testing |



Weighing Scale

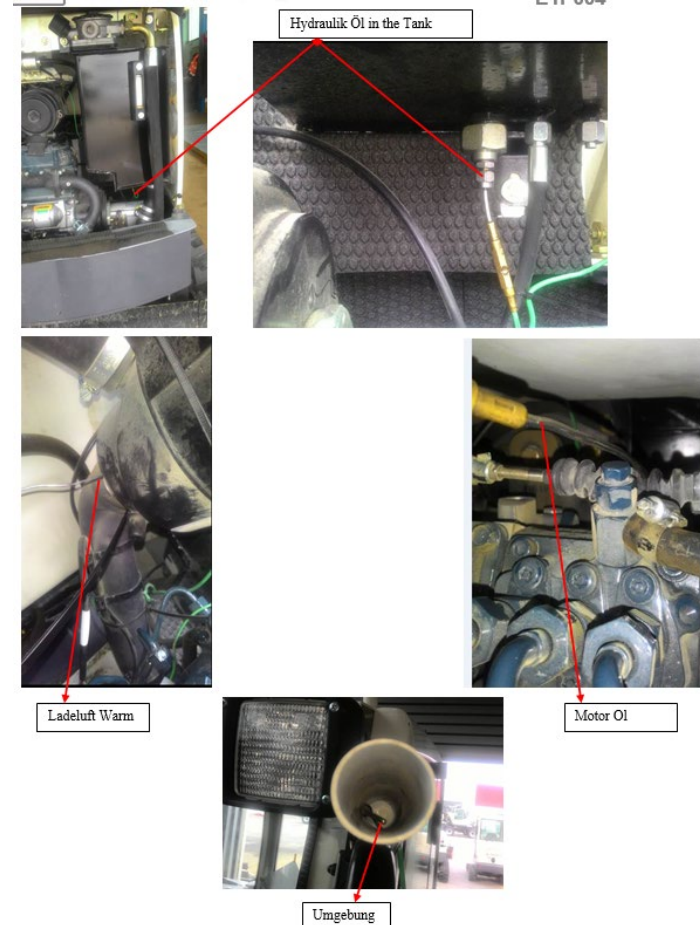
Summary

Project Name: Testing & Validation

Scope: Testing & Validation for Mini Excavators

- Complete Protobuild, Testing & Validation has been carried out at the Center according to the Testing standards specified.
- Snapshot of the detail Tests carried out:

| SI No. | Test Description |
|--------|-----------------------------|
| 1 | Initial Operation |
| 2 | Machine Test Stand |
| 3 | Weight Distribution |
| 4 | Heat Measurement |
| 5 | Exhaust Back Pressure |
| 6 | Slew(or)Swing Brake |
| 7 | Noise Measurement |
| 8 | Static Drawbar Pull |
| 9 | Lift Capacity(Tipping load) |
| 10 | Arm Digging Force |
| 11 | Bucket Break Out Force |
| 12 | Field Endurance Testing |



Summary

Project Name: Testing & Validation

Scope: Testing & Validation for Mini Excavators

- Complete Protobuild, Testing & Validation has been carried out at the Center according to the Testing standards specified.
- Snapshot of the detail Tests carried out:

| SI No. | Test Description |
|--------|-----------------------------|
| 1 | Initial Operation |
| 2 | Machine Test Stand |
| 3 | Weight Distribution |
| 4 | Heat Measurement |
| 5 | Exhaust Back Pressure |
| 6 | Slew(or)Swing Brake |
| 7 | Noise Measurement |
| 8 | Static Drawbar Pull |
| 9 | Lift Capacity(Tipping load) |
| 10 | Arm Digging Force |
| 11 | Bucket Break Out Force |
| 12 | Field Endurance Testing |



Summary

Project Name: Testing & Validation

Scope: Testing & Validation for Mini Excavators

- Complete Protobuild, Testing & Validation has been carried out at the Center according to the Testing standards specified.
- Snapshot of the detail Tests carried out:

| SI No. | Test Description |
|--------|-----------------------------|
| 1 | Initial Operation |
| 2 | Machine Test Stand |
| 3 | Weight Distribution |
| 4 | Heat Measurement |
| 5 | Exhaust Back Pressure |
| 6 | Slew(or)Swing Brake |
| 7 | Noise Measurement |
| 8 | Static Drawbar Pull |
| 9 | Lift Capacity(Tipping load) |
| 10 | Arm Digging Force |
| 11 | Bucket Break Out Force |
| 12 | Field Endurance Testing |



Typical arrangement of machine for Drawbar pull Test.



Hitch Point/Hook Point.



Pry post connected with Load Cell, D shackle & chain



Summary

Project Name: Testing & Validation

Scope: Testing & Validation for Mini Excavators

- Complete Protobuild, Testing & Validation has been carried out at the Center according to the Testing standards specified.
- Snapshot of the detail Tests carried out:

| SI No. | Test Description |
|--------|-----------------------------|
| 1 | Initial Operation |
| 2 | Machine Test Stand |
| 3 | Weight Distribution |
| 4 | Heat Measurement |
| 5 | Exhaust Back Pressure |
| 6 | Slew(or)Swing Brake |
| 7 | Noise Measurement |
| 8 | Static Drawbar Pull |
| 9 | Lift Capacity(Tipping load) |
| 10 | Arm Digging Force |
| 11 | Bucket Break Out Force |
| 12 | Field Endurance Testing |

