



 **TEREX** | **FINLAY**
Training Academy

IC-100RS Case Study

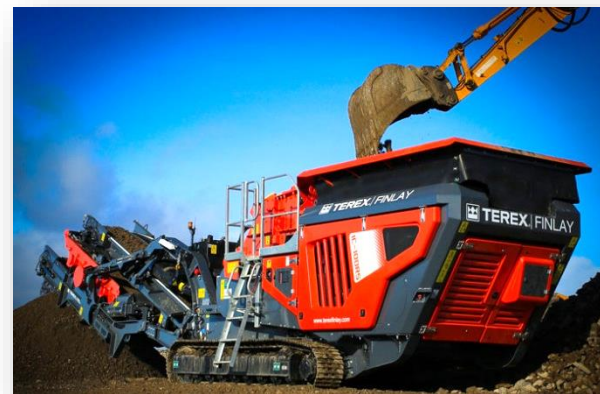
Rev-01

Feb-21

Subject to change without notice

IC-100RS Case Study

Machine: **IC-100RS**
Material type: Demolition
Machine spec: Primary = 150mm
Secondary = 35mm
2 High, 2 Low blowbar configuration
Martensitic Blow Bars
(RS mesh) 40mm
Rotor Speed: 840 RPM, Tip Speed = 39 m/s
Output: **150 mtph**



Feed Material



0-40mm Final Product

Average Fuel Consumption

Engine: John Deere 6068

194kW (260hp)

Tier 3 @ 1800RPM

Litres per Hour: Approx. 18

l/hr (4.76 US gal/hr)

(T-Link average)



WORKS FOR YOU.