

FM 300[™]

COMPACT



The FM 300 Compact is the largest sand washing unit within the FM Compact[™] range, offering up to 300tph of dewatered sand on a single compact modular chassis.

AGGREGATES



RECYCLING



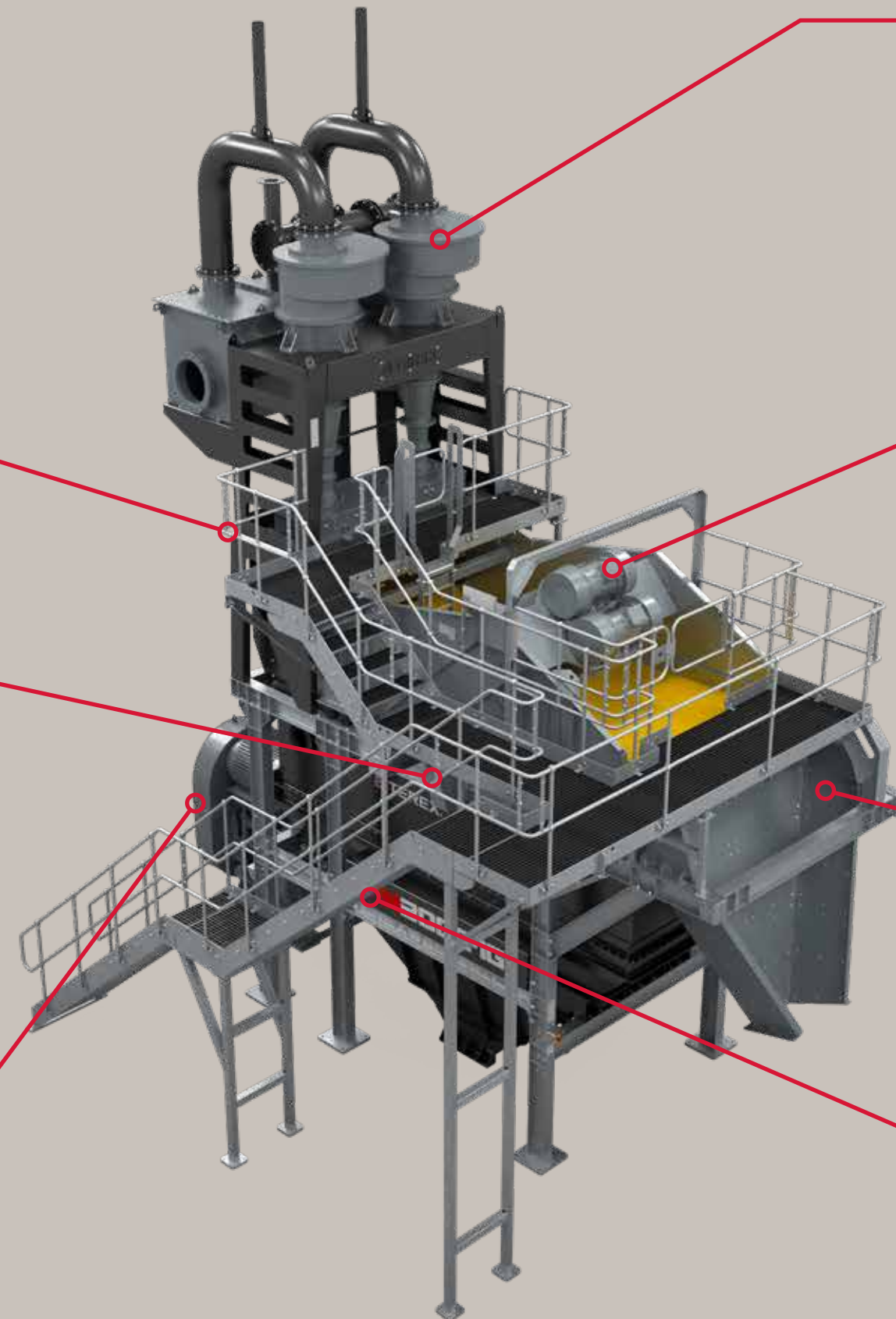
INDUSTRIAL SANDS



MINING



The Terex Washing Systems FM CompactTM range features modular sand washing and classification units engineered for cost and energy efficiency, all integrated onto a single compact chassis. Using centrifugal force within the hydrocyclone(s), the units effectively remove clay, silt and slime from sand to meet the desired specifications. The range combines a collection tank, centrifugal slurry pump(s), hydrocyclone(s) and a dewatering screen, capable of producing up to two grades of clean sand.



- Underflow box fitted with bolt-in, rubber-backed liners for enhanced wear protection

- Self-regulating float level system provides consistent tank volume while protecting the pump from running dry
- All slurry pipework is rubber lined to maximise wear life and enhance durability

- Available wired to isolators or with an optional control panel

- Rubber-lined centrifugal pump with replaceable liners
- Easy access for all pump and motor maintenance

- Rubber-lined, high-efficiency hydrocyclones provide maximum silt and clay (#200 [75µm]) removal from the final product
- Replaceable drop-in liners (rubber or ceramic)
- Available with standard KREBS® gMAX® hydrocyclones

- Linear motion, high-frequency dewatering screen capable of processing up to 300 tph of sand, delivering superior moisture reduction
- Marsh MellowTM vibration isolation mounts for the dewatering screen, designed to minimise structural stress and enhance operational stability
- E-stops positioned throughout plant for safe operation

- Full-width modular polyurethane dewatering media designed for fast and easy change-outs
- Polyurethane side modules for increased screen protection
- Low-friction discharge chute

- Fully galvanised, 800mm [32"] wide walkways with GRP flooring provide comprehensive access to the dewatering screen and cyclone apex
- Sloped tank minimises the risk of fines build-up

APPLICATIONS

The FM Compact™ range can produce up to two sands in the following applications:

- All forms of concrete, mortar and asphalt sands
- Quarry dust / crushed fines
- Lake and beach sands
- Silica sand for glass industry
- Golf course sands
- Filter bed sands
- Recycled materials
- Iron ore
- Manufactured sands (M-sands)

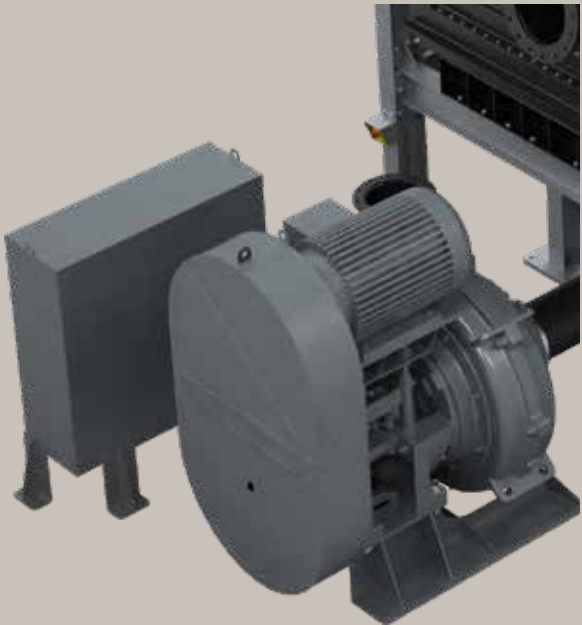


COMPONENTS

The FM Compact™ range share the following features:

Hydrocyclones

- Application-specific sizes for coarse and fine sands
- Interchangeable apex dependant on application
- All wear areas rubber lined
- Underflow collection box with ease of access to apex
- High volume cyclone overflow box
- Pressure gauge and protector



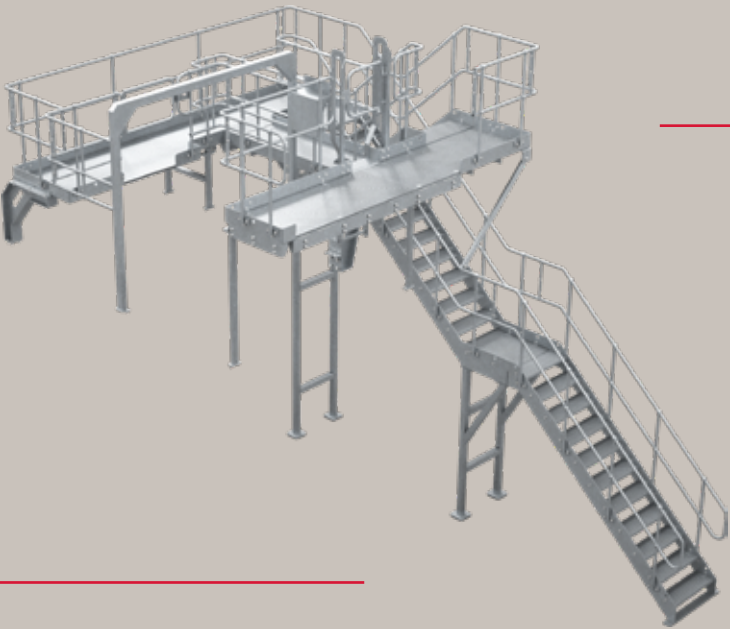
Centrifugal Pump

- Sized to suit your specific application
- Abrasion resistant liners
- Moulded rubber impellers
- Pump drain for cold climate applications
- Excellent serviceability
- Rubber lined for increased wear life

COMPONENTS

Chassis

- Self-regulating sump tank complete with built-in float system
- Built-in anti-turbulence feed box
- Heavy duty steel construction
- Easy access to all serviceable areas



Access

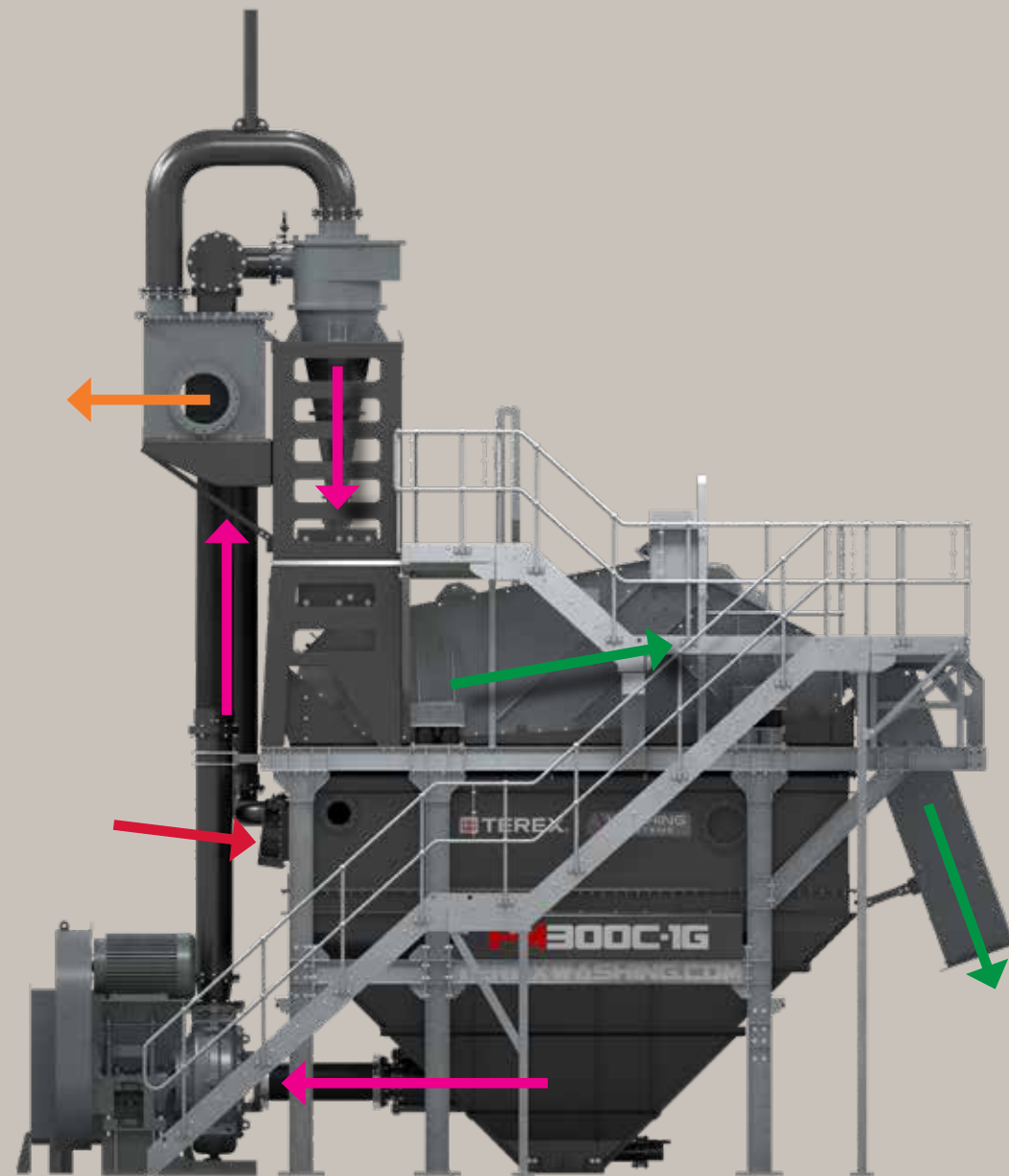
- Fully galvanised walkways, left or right-side availability
- 25mm GRP flooring
- Access to all serviceable areas
- All walkways/stairs 800mm wide

Dewatering screen

- Exceptional dewatering performance
- 2.1m x 4.8m [7' x 16']
- 2 x vibratory motors
- Polyurethane modules and side protection
- Polyurethane low friction chute liners
- Marsh Mellow™ screen mounts for smoother running



MATERIAL FLOW



- Feed material in slurry form (sand + water)
- Slurry (sand + water)
- Cyclone wastewater (silt + water)
- Dewatered sand product

SPECIFICATION

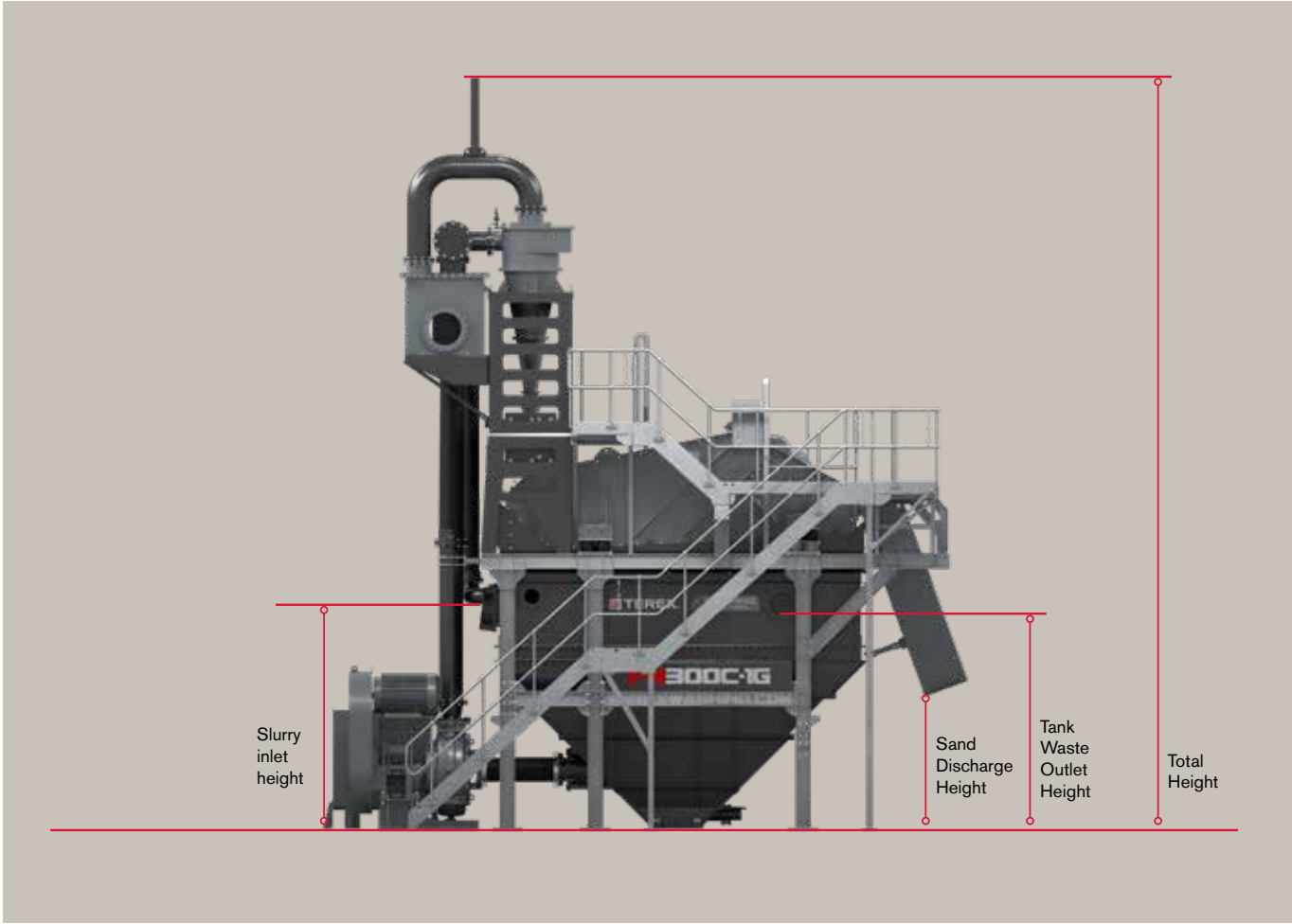
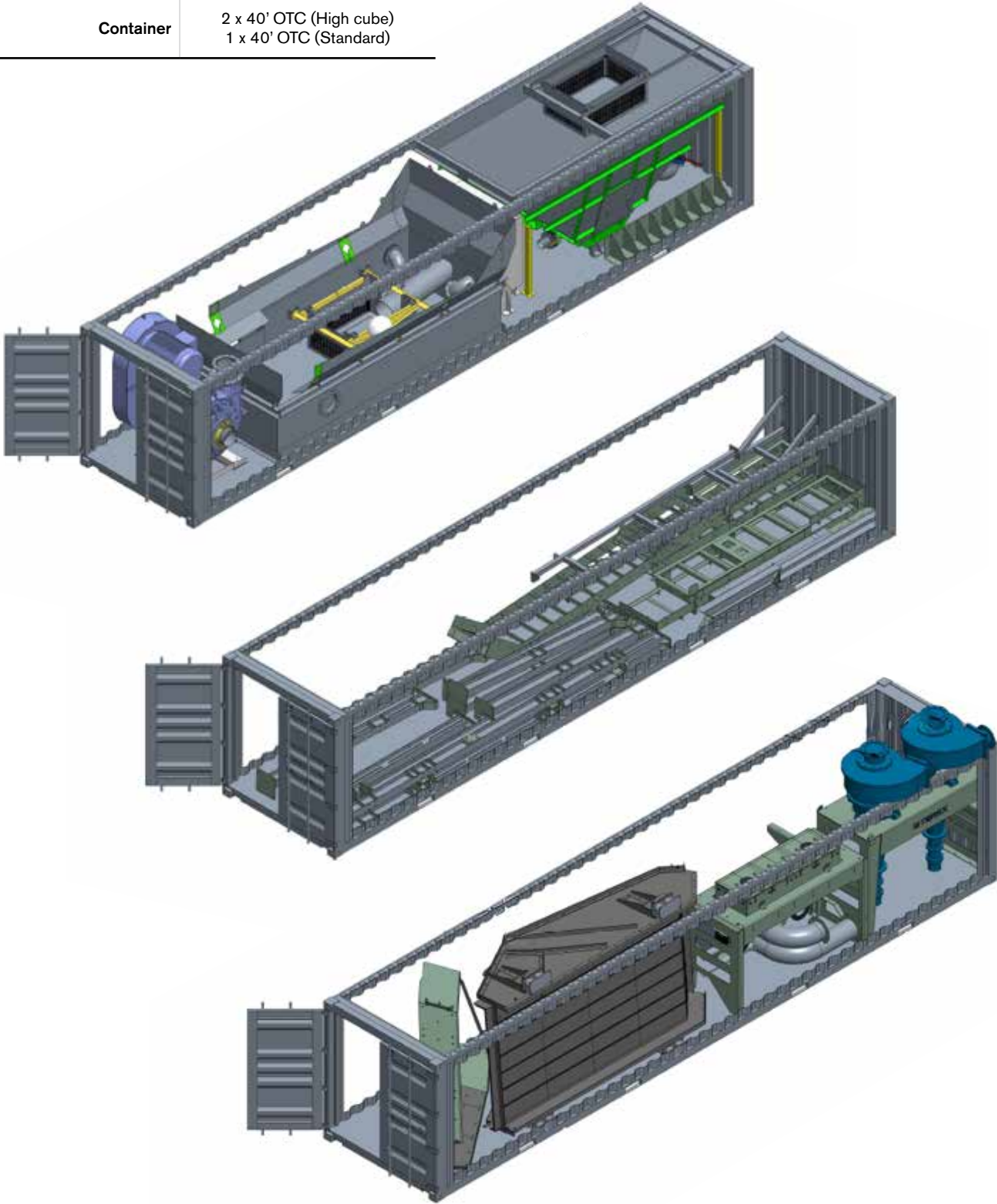
Machine Model	FM 300C
Max Tonnage (mtpd [stph])	300 [330]
Dewatering Screen (m [ft])	2.1 x 4.8 [7 x 16]
Hydrocyclone	2 x gMAX26® [660mm]
Pump Size (mm [inch])	300/250 [12/10]
Pump Power (kW [hp])	110 [148]
Inlet Flange (mm [Inch])	400 [16]
Outlet Flange (mm [Inch])	450 [18]
Total Power (kW [hp])	132 [177]

DIMENSIONS

Machine Model	FM 300C
Max Height (mm [ft.-in])	10126 [33'3"]
Max length (mm [ft.-in])	8673 (28'6")
Max Width (mm [ft.-in])	5363 (17'7")
Inlet Height (mm [ft.-in])	2975 [9'9"]
Tank Overflow Outlet Height (mm [ft.-in])	3053 [10']
Cyclone Overflow Outlet Height (mm [ft.-in])	6761 [22'2"]
Chute Discharge Height (mm [ft.-in])	11778 [5'10"]

DIMENSIONS (TRANSPORT)

Machine Model	FM 300C
Container	2 x 40' OTC (High cube) 1 x 40' OTC (Standard)





**DEDICATED TO WASHING,
DEDICATED TO YOU.**



TEREX WASHING SYSTEMS

FARLOUGH SITE

32 Farlough Road,
Dungannon,
Co. Tyrone,
Northern Ireland, BT71 4DT

Tel: +44(0) 28 8771 8500
Email: TWS.sales@terex.com



www.terex.com/washing

Effective Date: October 2025 Product specifications and prices are subject to change without notice or obligation. The photographs and/or drawings in this document are for illustrative purposes only. Refer to the appropriate Operator's Manual for instructions on the proper use of this equipment. Failure to follow the appropriate Operator's Manual when using our equipment or to otherwise act irresponsibly may result in serious injury or death. The only warranty applicable to our equipment is the standard written warranty applicable to the particular product and sale and Terex makes no other warranty, express or implied. Products and services listed may be trademarks, service marks, or trade names of Terex Corporation and/or its subsidiaries in the USA and other countries. All rights are reserved. Terex is a registered trademark of Terex Corporation in the USA and many other countries.
© 2025 Terex Corporation.