



Terex Utilities

PRODUCT ADVISORY

PA731

DATE: 9/26/2024

REVISED:

TO: Owners, Users, Dealers, and Installers

MODELS AFFECTED: All

SUBJECT: Critical Weld Inspection

Issue:

Inspection of the structure of an aerial device or digger derrick both daily visual and more thorough annual is required for continued safe use. A component of the inspection is a visual inspection of all critical welds as identified in the Maintenance Manual for your machine. Overloading or using the machine in an unintended or unsafe manner may cause the material to fatigue and crack. **Continued use with cracked, deformed, or damaged components may lead to failure and the booms falling.**

What the Owner must Do:

It is the responsibility of the owners/users/operators to ensure compliance to ANSI Standards and OSHA regulations. Sections 8, 9, and 10 of ANSI A92.2 (Aerial Devices) and ANSI A10.31 (Digger Derricks) requires the owner and user to ensure qualified personnel perform inspections and maintenance in accordance with the manufacturer's requirements. The requirements for the specific models are given in the manuals provided with the machine.

Action:

Terex has requirements for daily and annual inspections for cracks and permanent deformation. All welds are termed critical.

Daily

- Pre-shift visual inspections are required of all structural members for cracks and permanent deformation.
- Structural components of the boom tip, booms, turntable, pedestal, subframe, outriggers and vehicle attachment and support structure are critical.

Annual

- Remove covers as necessary to examine the supporting structures thoroughly. Clean the unit to properly inspect structural components. Components cannot be inspected properly when covered in grease and dirt.
- Inspection areas include: any welds, at all changes in section, all boss locations, weldment assemblies which pivot, side plates attached to boom tubes, turntable weldments, cylinder attachments, elbow weldments, cylinder case and rod weldments, platform attachment components, and auger supports must be inspected. Also inspect the pedestal to subframe weldments, subframe to outrigger weldments, outrigger components, outrigger feet and attachment to the vehicle.

- Visually inspect for signs of deformation, cracks, electrical contact marks, fatigue, or impending failure. Visible rust may be coming from cracks and require careful cleaning and inspection.

Any suspect areas identified in any inspection should be further inspected using an acceptable non-destructive test procedure such as magnetic particle or dye penetrant testing.

Repair or replace any defective items found. Contact Terex Utilities for repair procedures before any weld repair. The welder must know the material involved, joint preparation, and welding procedure required before proceeding to perform an adequate repair. The welder must also be certified to AWS D1.1 requirements for steel.

The reference figures at the end of the bulletin are examples of the critical weld inspection diagrams that are in the Maintenance Manuals. The diagrams show the specific areas that must be inspected for that model of machine, but any and all welds must be inspected.

What Terex will Do:

Terex can provide training on inspections and maintenance for the various models both online, onsite and at factory service schools. Refer to the website given below for more information and scheduled events. The ANSI A92.2 Manual of Responsibility can be ordered from your local Terex dealer or branch (part number: 494633) or directly from ANSI.ORG.

If more information is needed contact your local Terex dealer or branch or contact Technical Support at utilities.service@terex.com or by calling 1-844-837-3948 and asking for technical support.

Replacement manuals can be ordered by providing a Terex Utilities dealer or branch with the serial number of the unit.

Important: Units in rental fleets; Lessors, upon delivery of the unit to the Lessee, must instruct the Lessee of their responsibilities in Section 8 regarding inspection, testing, and maintenance requirements. Lessors should make this Product Advisory available to the users of their equipment.

Terex and local industry standards (CSA and ANSI) require the purchaser of a Terex unit report to Terex the model and serial number of each machine. Use the Owner Update Form in the manual. Please contact TEREX Utilities Warranty Department at 1-844-837-3948 or utilities.warranty@terex.com or online at: <https://www.terex.com/utilities/en/support/product-registration>

Reference Figures

See your unit specific manual

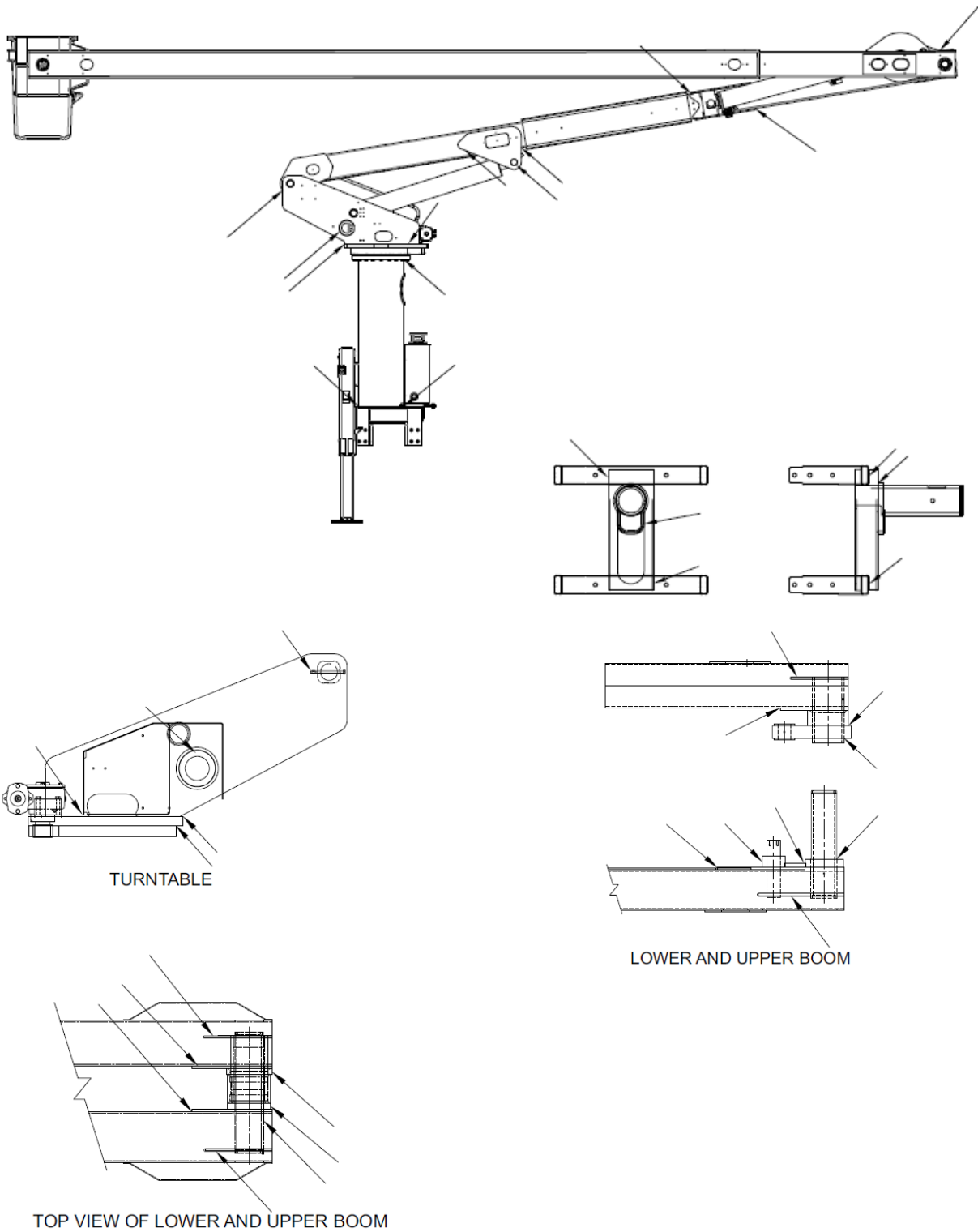


Figure 1. Example XT Pro Aerial Device Critical Weld

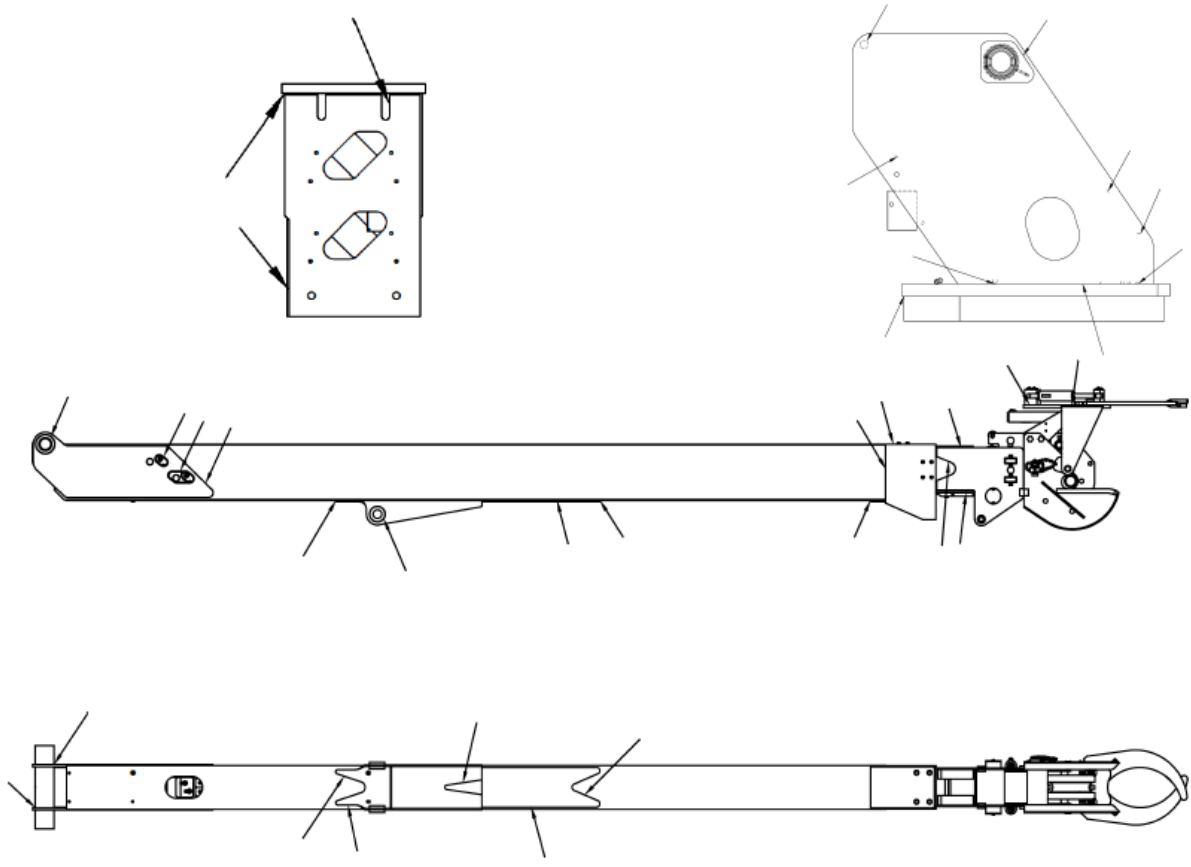


Figure 2. Example Digger Derrick Critical Weld