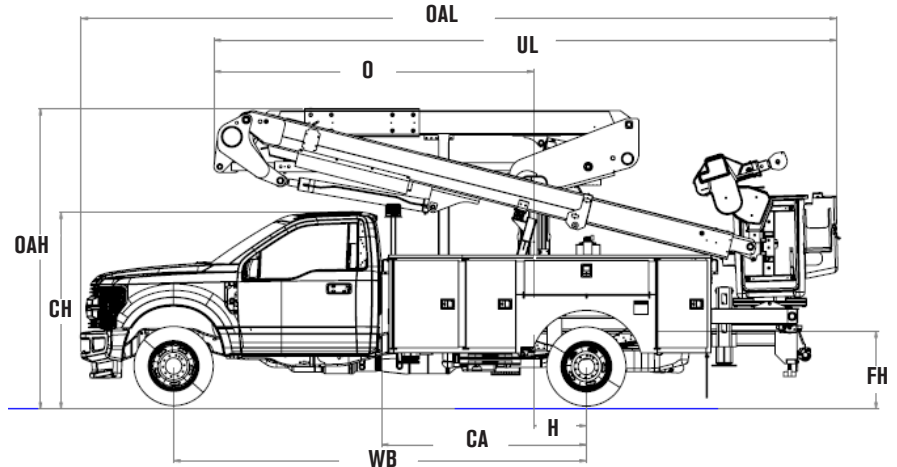


## AERIAL DEVICE

Terex® Hi-Ranger Aerial Devices are known throughout the industry. They come with a long history featuring quality and innovative design.



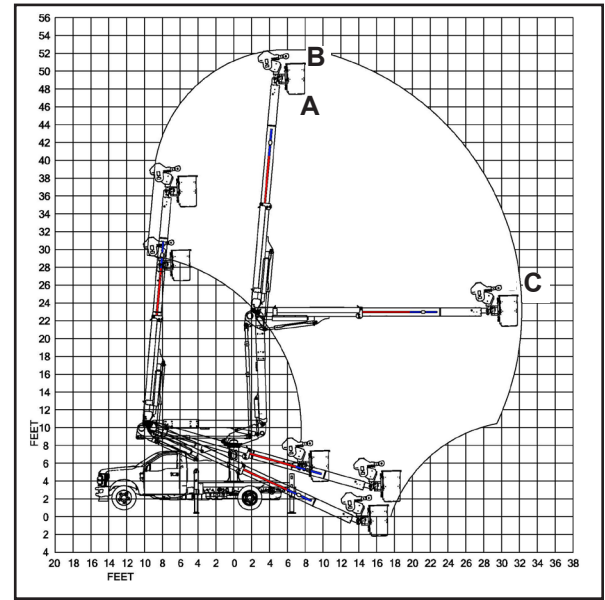
Measurements	TL48
Typical Frame Height (FH)	32 in. (81.3 cm)
Typical Cab Height (CH)	78 in. (198.1cm)
Offset (O)	10' 11.25" (3.3 m)
Overall Height (OAH)	10' 3" (3.1 m)
Overall Length (OAL)	25' 10" (7.9 m)
Unit Length (UL)	21' 4" (6.6 m)
Center of Rotation (H)	21.5 in. (54.6 cm)
Cab to Axle (CA)	84 in. (213.4 cm)
Wheel Base (WB)	169 in. (429.3 cm)
Front Axle (FA)	7,500 lb. (3,402 kg)
Rear Axle (RA)	14,700 lb. (6,671 kg)
Gross Vehicle Weight Rating (GVWR)	19,500 lb. (8,845 kg)
Recommended Weight for Stability	14,500 lb. (6,577 kg)
Frame Section Modulus	12.7 in <sup>3</sup>
Frame Yield Strength	50,000 psi
Frame RBM	635,000 in-lbs

# TL48 AERIAL DEVICE

## Hi-Ranger Telescopic Aerial Device

### STANDARD EQUIPMENT

- End-Mount 24" x 30" x 42" One-Person Platform
- Platform Capacity up to 500 lb (226.8 kg)
- 4-Function Single Stick
- Safety Harness with Attached Lanyard
- Hydraulic Platform Rotator (180" End Mt.)
- Continuous Unrestricted Worm Gear Rotation
- Category "C" Rating Per ANSI A92.2
- Rectangular, Bi-Axial Epoxy Resin, Filament Wound Fiberglass Booms
- Individual Lever Lower Controls
- Dual Hydraulic Tools with Flow Control
- Hydraulic Platform Leveling System
- Platform Tilt Control at Upper and Lower Controls
- Steel Main Boom
- Fiberglass Second Section Boom
- Fiberglass Lower Boom Insert
- Full Pressure, Open-Center Hydraulic System
- 20 Gallon Hydraulic Oil Reservoir
- Engine Stop/Start
- Automatic Boom Latch with Padded Boom Rests
- Lower Boom Rest
- Outrigger Interlock
- Moving Outrigger Alarm
- Truck Level Indicator
- Powder Coated Finish Paint



Note: Graphic shown based on 40 in. frame height as required by ANSI A92.2. Typical Super-Duty chassis frame height is 32 in., therefore, deduct according to truck being used.

### CAPACITIES & DIMENSIONAL DATA (Based on a 40 inch Frame Height)

Model	A	B	C	Boom Travel	
	Bottom of Platform Height (A)	Working Height (B)	Horizontal Reach (C)	Lower Boom	Upper Boom
TL48	47.5 ft (14.5 m)	52.5 ft (16.0 m)	31.8 ft (9.7 m)	0 to 88 Degrees	-25 to 85 Degrees

### OPTIONAL EQUIPMENT

- Various End Mount Platforms
- Various Platform Covers
- Liners With or Without Steps
- 24" Platform Lifter
- Jib Options
  - Hydraulic Articulating Jib/Winch, End Mount 1000 lbs. (453.6 kg)
  - Various Conductor Handling Accessories (Ref. PD3095)
- Lower Boom Lifting Eye
- Auxiliary Power
- Auxiliary Let Down System
- Boom Overstow Protection
- Boom/Boom Stow Interlock
- Boom Storage Warning Light
- Outrigger Sag Light
- Various Types of Outriggers
- Truck Grounding Cable & Clamp
- HyPower™ Hybrid System by Terex®