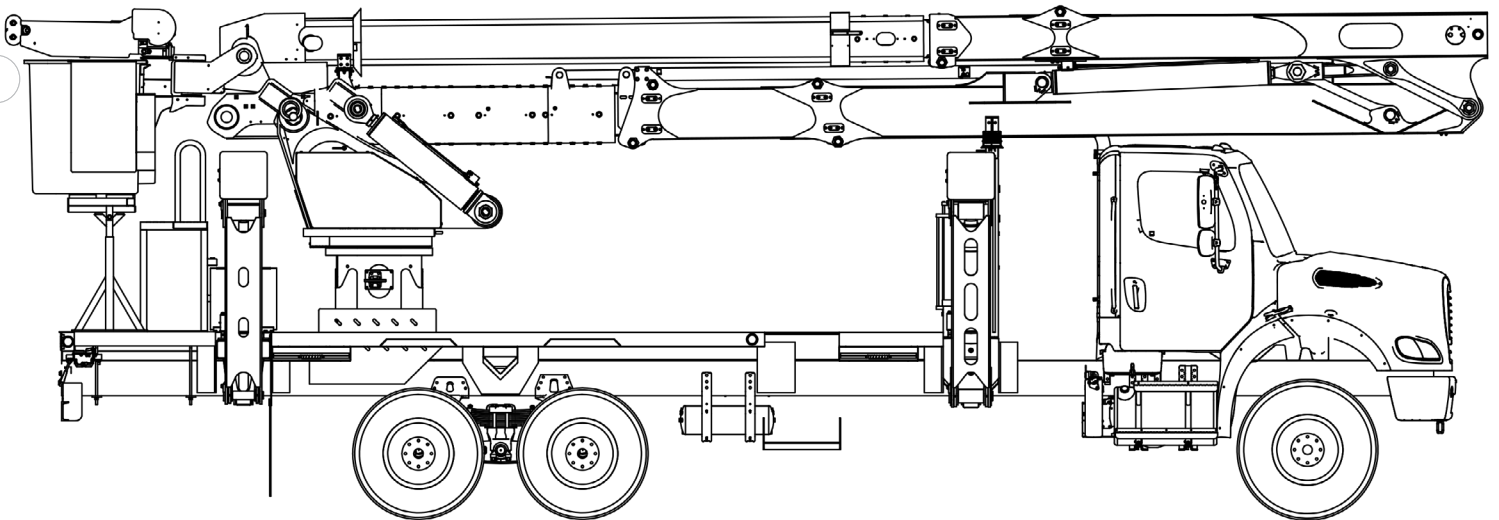




# TECH TIPS

ADJUSTMENTS FOR RADIAL OUTRIGGERS CREEPING DOWN

NO. 115



**SERVICE CALL:**  
ADJUSTMENTS FOR RADIAL  
OUTRIGGERS CREEPING DOWN



**MODEL(S):**  
ALL TEREX MODELS USING THE  
CYLINDER 603020 ON RADIAL  
OUTRIGGERS



**TOOLS NEEDED:**  
SIMPLE HAND TOOLS

TEREX UTILITIES TECHNICAL SUPPORT TEAM

PHONE: 1-844-TEREX4U (1-844-837-3948) | EMAIL: [UTILITIES.SERVICE@TEREX.COM](mailto:UTILITIES.SERVICE@TEREX.COM)



## **DANGER**

Failure to obey the instructions and safety rules in the appropriate Operator's Manual and Service Manual for your machine will result in death or serious injury.

Many of the hazards identified in the Operator's Manual are also safety hazards when maintenance and repair procedures are performed.

## **DO NOT PERFORM MAINTENANCE UNLESS:**

- ✓ You are trained and qualified to perform maintenance on this machine.
- ✓ You read, understand and obey:
  - manufacturer's instructions and safety rules
  - employer's safety rules and worksite regulations
  - applicable governmental regulations
- ✓ You have the appropriate tools, lifting equipment and a suitable workshop.

The information contained in this Tech Tip is a supplement to the Service Manual. Consult the appropriate Service Manual of your machine for safety rules and hazards.



TECH TIP 115 | RELEASED 03.18.2026 | VERSION 1.1  
©TEREX UTILITIES. ALL RIGHTS RESERVED

# CONTENTS

## TECH TIP #115

4

| *Lower the radial outriggers and remove guard*

**INTRODUCTION  
STEP 1**

5

| *Adjust holding valve*

**STEP 2 - STEP 4**

6

| *Re-assemble*

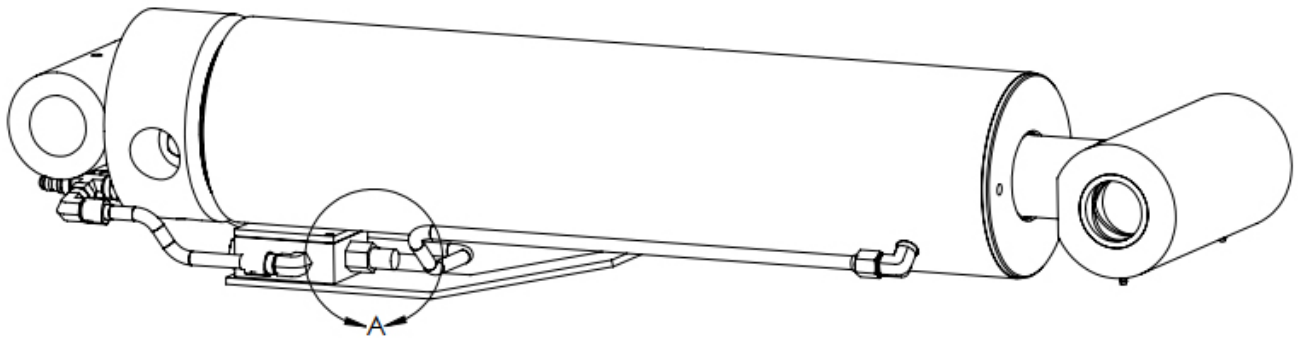
**STEP 5 - STEP 6**

# INTRODUCTION

This adjustment can be made for radial outriggers that drift slightly due to a latch that is out of adjustment or from thermal expansion when parked overnight in the stowed position.

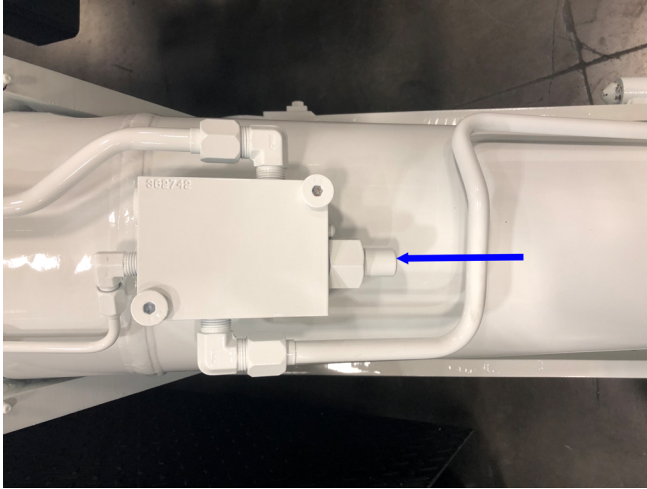
## STEP 1

Lower the radial outriggers and remove the guard to gain access to the holding valve (See A in the drawing below).



## STEP 2

The holding valve is originally set at 3000 psi with a crack pressure of 3700 psi.

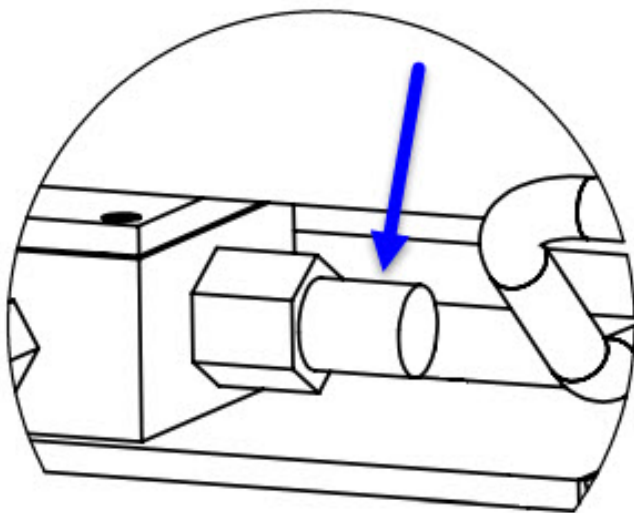


## STEP 3

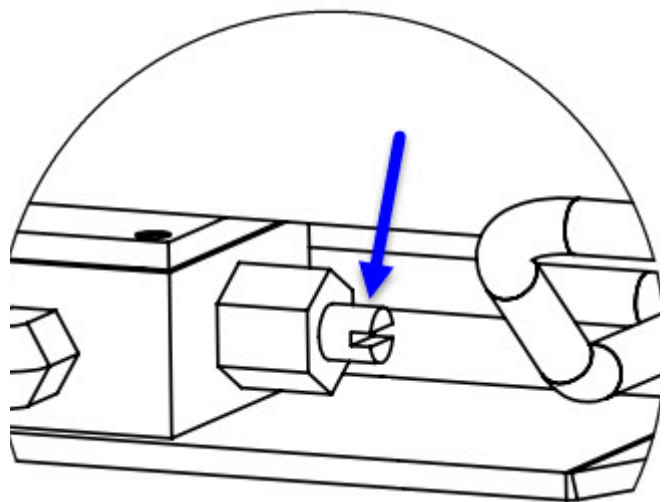
There are two different holding valves that could be installed on the unit. A Dana holding valve will have a slotted stem. A Sun holding valve will have a hex stem.

## STEP 4 - Dana

Remove the cap to adjust the holding valve setting. The Dana valve will have a slotted stem.



**Dana Valve:** Adjust the rod side holding valve by turning it clockwise ½ of a turn.



**Dana Valve**

## STEP 5 - Sun

**Sun Valve:** Adjust the rod side holding valve by turning the hex stem counter-clockwise  $\frac{1}{2}$  of a turn.



**Sun Valve**

## STEP 6

Mark the nut and adjustment screw with sentry (torque) seal to indicate an adjustment has been made.

For the Dana valve, reinstall the cover over the holding valve adjustment stem.

Reinstall the guard plate.

**Note:** Excessive wear at the latch may require welding to build the area back up and allow the latch to properly secure the outrigger in the stored position.



FOR FURTHER ASSISTANCE,  
CONTACT THE TEREX UTILITIES TECHNICAL SUPPORT TEAM  
PHONE: **1-844-TEREX4U (1-844-837-3948)** | EMAIL: **[UTILITIES.SERVICE@TEREX.COM](mailto:UTILITIES.SERVICE@TEREX.COM)**

---