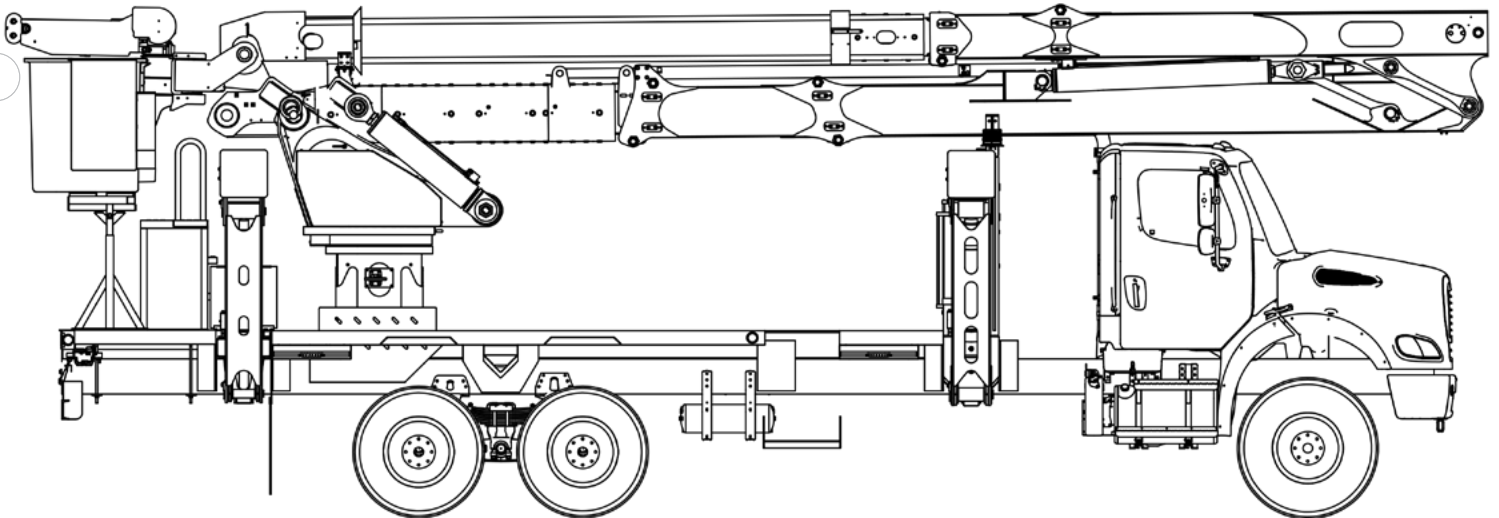




# TECH TIPS

AERIAL LOAD CHARTS P/N 613703

NO. 185



**GENERAL KNOWLEDGE**  
AERIAL LOAD CHARTS



**MODEL(S):**  
TM AERIAL UNITS USING LOAD  
CHART 613703



**TOOLS NEEDED:**  
NONE

TEREX UTILITIES TECHNICAL SUPPORT TEAM

PHONE: 1-844-TEREX4U (1-844-837-3948) | EMAIL: [UTILITIES.SERVICE@TEREX.COM](mailto:UTILITIES.SERVICE@TEREX.COM)



## **DANGER**

Failure to obey the instructions and safety rules in the appropriate Operator's Manual and Service Manual for your machine will result in death or serious injury.

Many of the hazards identified in the Operator's Manual are also safety hazards when maintenance and repair procedures are performed.

## **DO NOT PERFORM MAINTENANCE UNLESS:**

- ✓ You are trained and qualified to perform maintenance on this machine.
- ✓ You read, understand and obey:
  - manufacturer's instructions and safety rules
  - employer's safety rules and worksite regulations
  - applicable governmental regulations
- ✓ You have the appropriate tools, lifting equipment and a suitable workshop.

The information contained in this Tech Tip is a supplement to the Service Manual. Consult the appropriate Service Manual of your machine for safety rules and hazards.



TECH TIP 185 | RELEASED 08.30.2022 | VERSION 1.0  
©TEREX UTILITIES. ALL RIGHTS RESERVED

# CONTENTS

## TECH TIP #185

4 | *Jib Capacity*  
**STEP 1**


5 | *Determine weight within platform*  
**STEP 2**

6 | *Total Combined*  
**STEP 3**

# STEP 1

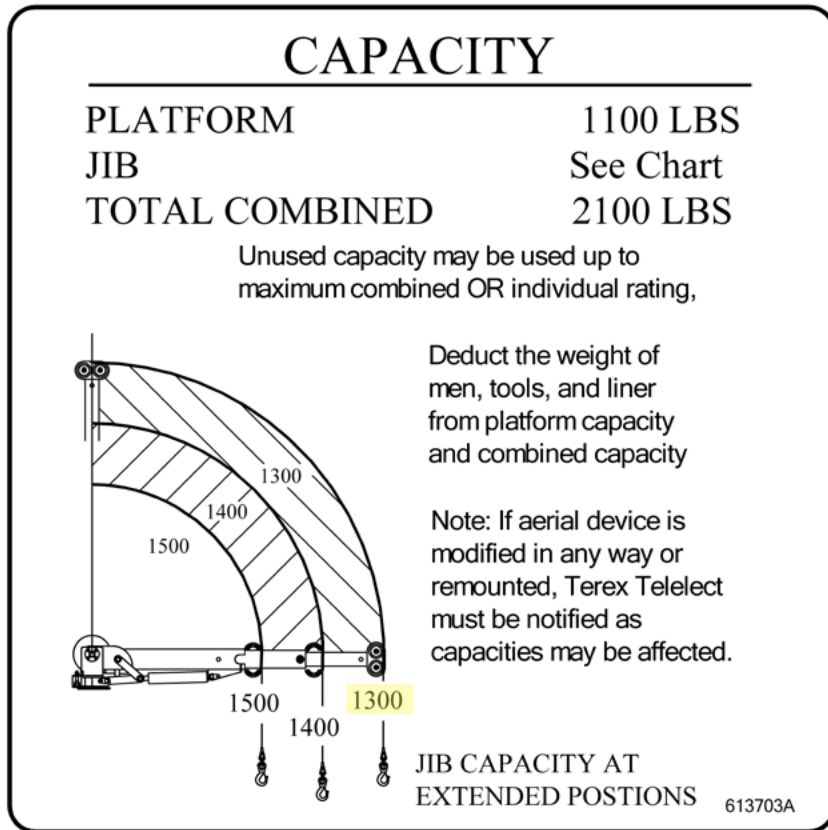
Using the information provided in the table, determine the maximum jib capacity.

With the jib fully extended, the jib capacity is 1300 lbs. according to the load chart.



This tech-tip demonstrates how to use a load chart. Always use the unit specific load chart to determine capacities and to plan the path of the load.

<b>Jib Position</b>	Fully Extended	<b>Liner</b>	100 lbs.
<b>Operators</b>	290 lbs. 250 lbs.	<b>Tools</b>	260 lbs.



**FIGURE 1**

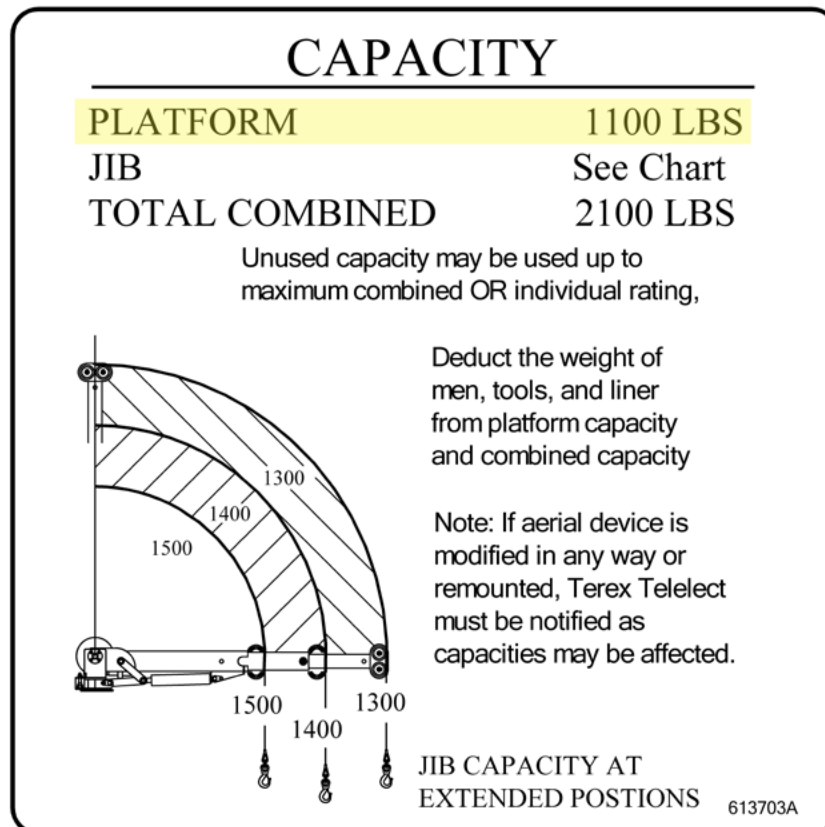
## STEP 2

Determine the platform capacity used.

According to the load chart, the platform has a capacity of 1100 lbs. The weights of the operators are 290 and 250 lbs, the liner weighs 100 lbs. and the tools weigh 260 lbs. The total capacity used in the platform is:  $290 + 250 + 100 + 260 = 900$  lbs.

This puts us within the maximum platform capacity of 1100 lbs.

<b>Jib Position</b>	Fully Extended	<b>Liner</b>	100 lbs.
<b>Operators</b>	290 lbs. 250 lbs.	<b>Tools</b>	260 lbs.



**FIGURE 2**

### STEP 3

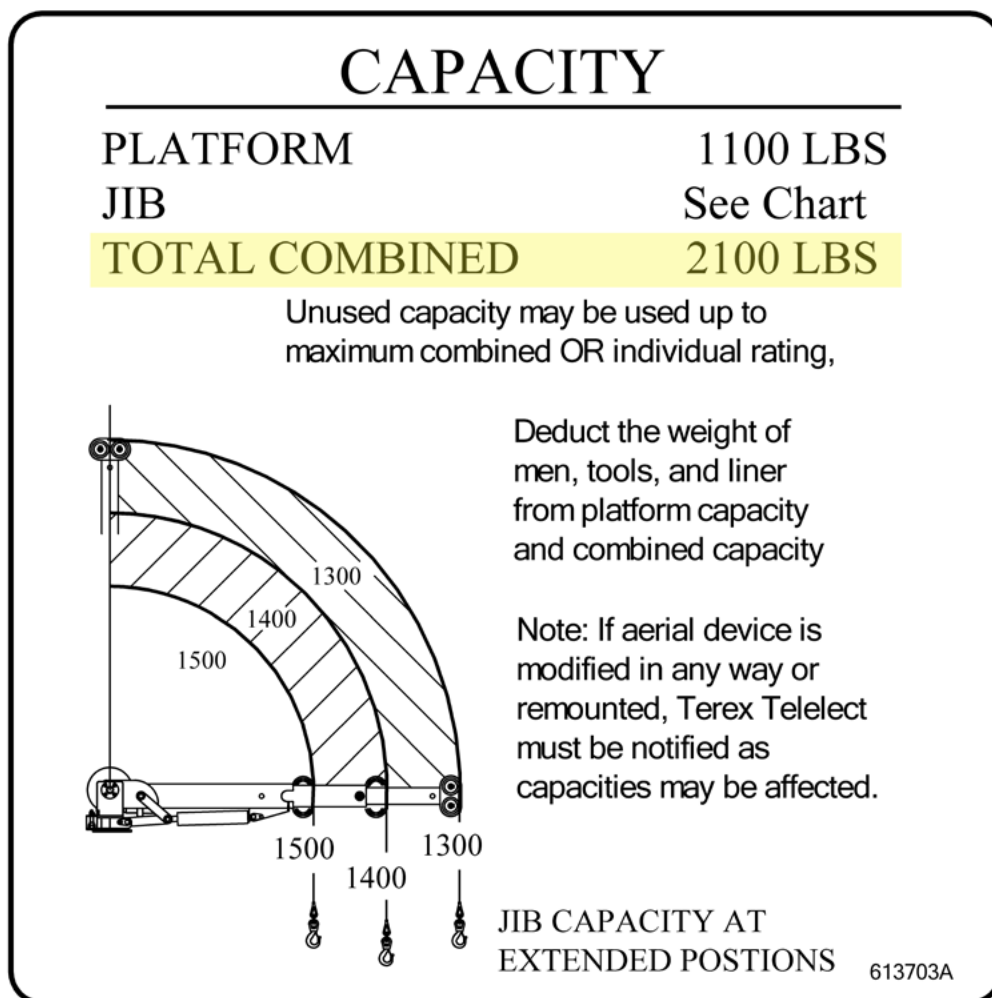
As stated earlier, the jib capacity when fully extended is 1300 lbs. Adding the weight at the platform to the jib capacity gives the total combined capacity: 900 lbs. + 1300 lbs. = 2200 lbs.

2200 lbs. exceeds the 2100 lbs. Total Combined Capacity listed on the load chart.

To stay within the Total Combined capacity, the maximum that could be lifted with the jib is 1200 lbs.

If 100 lbs. of tools can be removed from the platform, the full 1300 lbs. could be lifted with the jib.

**Note:** The platform capacity, jib capacity, and total combined capacity are all limiting factors. Each must be considered prior to performing a lift.



**FIGURE 3**



FOR FURTHER ASSISTANCE,  
CONTACT THE TEREX UTILITIES TECHNICAL SUPPORT TEAM  
PHONE: [1-844-TEREX4U \(1-844-837-3948\)](tel:1-844-TEREX4U) | EMAIL: [UTILITIES.SERVICE@TEREX.COM](mailto:UTILITIES.SERVICE@TEREX.COM)

---