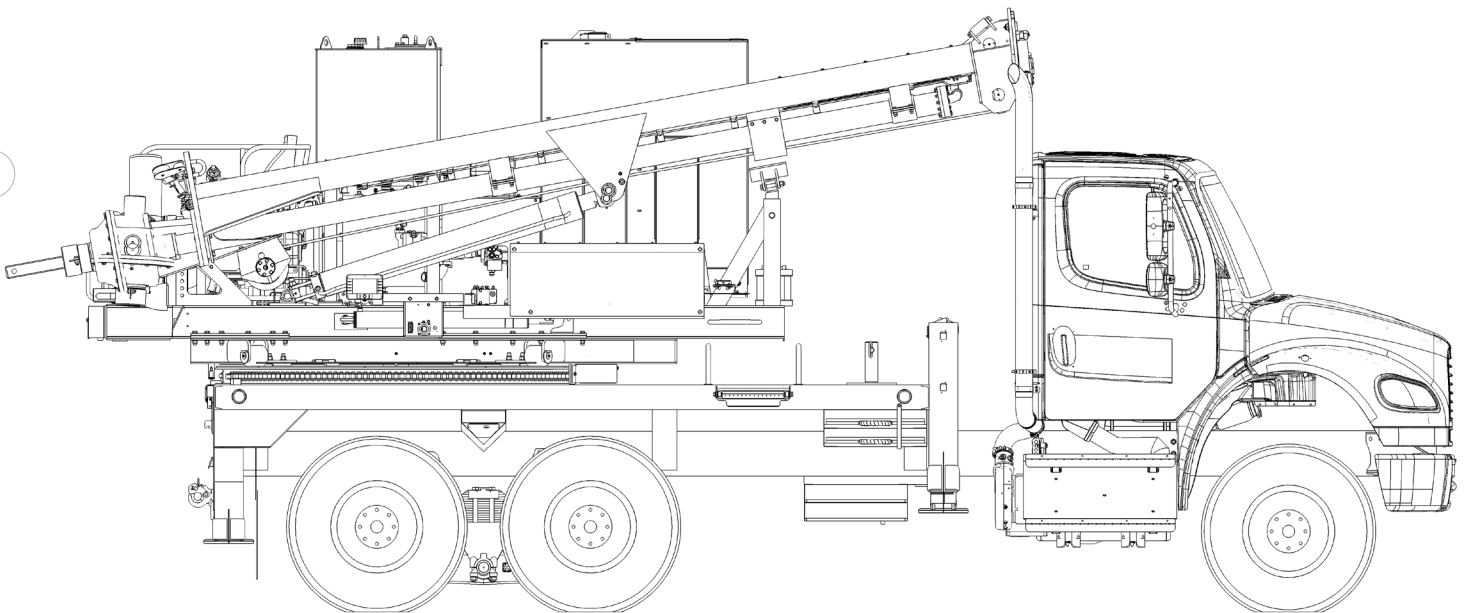




TECH TIPS

REPLACING THE UPPER PACKING ON THE BARREL SUPPORT

NO. 21



SERVICE CALL:
REPLACING THE UPPER PACKING
ON THE BARREL SUPPORT




MODEL(S):
330 AUGER DRILL




TOOLS NEEDED:
CHAIN WRENCH
3/8" AND 9/16" WRENCH

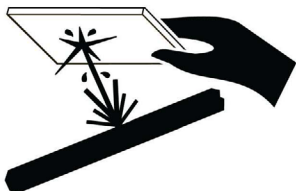
TEREX UTILITIES TECHNICAL SUPPORT TEAM

PHONE: 1-844-TEREX4U (1-844-837-3948) | EMAIL: UTILITIES.TECHSUPPORT@TEREX.COM

**WARNING**



Injection Hazard
Fluid escaping under pressure can penetrate skin and result in death or serious injury.



Relieve pressure before disconnecting hydraulic lines.
Stay clear of leaks and pin holes. Use a piece of cardboard or wood to search for leaks. Do not use hand.
Fluid injected into skin must be surgically removed within a few hours by a doctor familiar with this type of injury, or gangrene will result.



DANGER

Failure to obey the instructions and safety rules in the appropriate Operator's Manual and Service Manual for your machine will result in death or serious injury.

Many of the hazards identified in the Operator's Manual are also safety hazards when maintenance and repair procedures are performed.

DO NOT PERFORM MAINTENANCE UNLESS:

- ✓ You are trained and qualified to perform maintenance on this machine.
- ✓ You read, understand and obey:
 - manufacturer's instructions and safety rules
 - employer's safety rules and worksite regulations
 - applicable governmental regulations
- ✓ You have the appropriate tools, lifting equipment and a suitable workshop.

The information contained in this Tech Tip is a supplement to the Service Manual. Consult the appropriate Service Manual of your machine for safety rules and hazards.

**TEREX®**

TECH TIP 21 | RELEASED 12.16.2025 | VERSION 1.0

©TEREX UTILITIES. ALL RIGHTS RESERVED

**TEREX®**

PAGE 2 OF 9

CONTENTS

TECH TIP#21

TOC

4

| Loosen the set screw

STEP 1

5

| Remove the packing nut

| Place an oil pan under the work area

STEP 2 - STEP 4

6

| Push the kelly bar out 24 inches

| Retract the kelly bar

STEP 5 - STEP 6

7

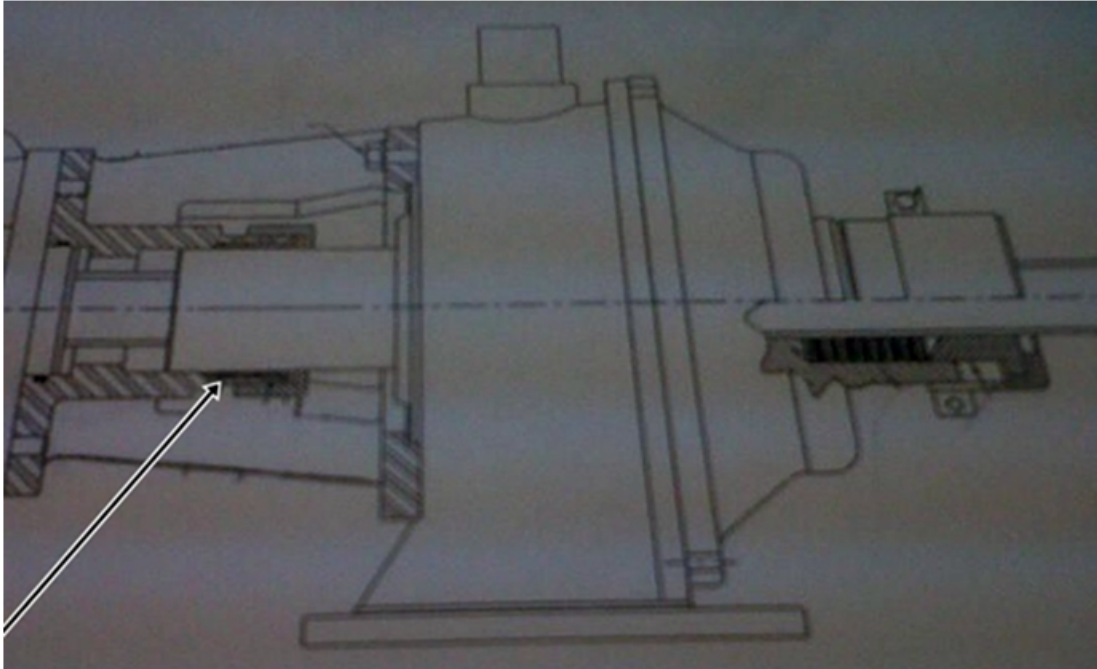
| Install the upper packing

STEP 7 - STEP 8

8

| Assemble and Test

STEP 9 - STEP 12



STEP 1

With the mast laying down in the rest, remove the set screw, back off the jam nut with a 9/16" wrench, and then loosen the set screw with a 3/8" wrench.



Set screw and locknut

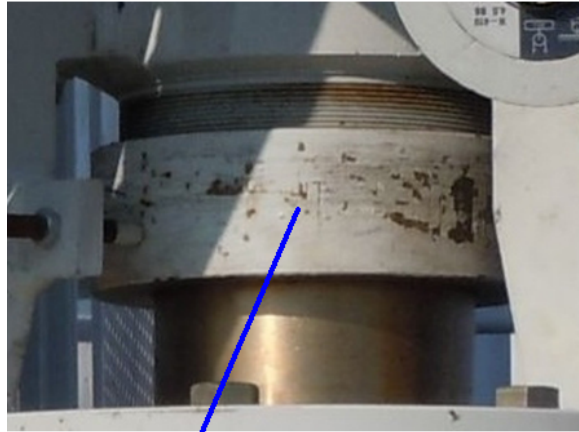


Escaping fluid under pressure can penetrate skin causing serious injury.

Relieve pressure before disconnecting hydraulic lines. Keep away from leaks and pin holes. Use a piece of cardboard or paper to search for leaks. DO NOT use your hand.

STEP 2

Remove the packing nut with a chain wrench and slide the nut back out of the way. Remove the packing gland from inside the support and slide back also.



Packing Nut or Packing Gland

STEP 3

Install a piece of cardboard over the top of the support and the thread area of the support; this will help with the control of oil when you remove the packing from the support area.

STEP 4

Place an oil pan under the work area on the floor to catch the oil.

Note: Refer to the operator's manual before operating the unit.



Escaping fluid under pressure can penetrate skin causing serious injury.

Relieve pressure before disconnecting hydraulic lines. Keep away from leaks and pin holes. Use a piece of cardboard or paper to search for leaks. DO NOT use your hand.

STEP 5

Start the deck engine and push the Kelly Bar out about 24 inches, then retract the Kelly Bar and this will push the upper packing out.

STEP 6

Shut down the engine before removing the old packing.



Escaping fluid under pressure can penetrate skin causing serious injury.

Relieve pressure before disconnecting hydraulic lines. Keep away from leaks and pin holes. Use a piece of cardboard or paper to search for leaks. DO NOT use your hand.



STEP 7

To install the new upper packing, P/N T16760, place the new packing in a pail of hydraulic oil and allow it to soak for 30 to 45 minutes.

Note: The packing is installed as a set with each individual piece split to allow it to be installed without removing the mast assembly.



STEP 8

The packing is to be installed with the V of the packing toward the top of the mast.



This is the V side of the packing, install toward the top.

Stagger the individual packing pieces, placing the splits in different positions around the circle as shown below:



STEP 9

Use the packing gland to push the packing up into place.



STEP 10

When all the packing is installed in the support, reinstall the nut and tighten snug using the chain wrench. Do not over-tighten the nut. Over-tightening will cause damage to the brass sealing area.

Note: The upper packing requires that a small amount of leakage be present to increase the life of the packing and to avoid burning up the upper packing.

STEP 11

Install the set screw back into the support arm and into the cap area using the 3/8" wrench, then tighten the jam nut with the 9/16" wrench. This will prevent the cap from over-tightening onto the support.

STEP 12

Test the upper packing, start the unit and run the Kelly Bar in and out 3 feet several times.

Note: If the upper packing leaks excessively, tighten the nut slightly. If you see pieces of packing extruding or black oil running out of the bottom of the cap, you have over-tightened the cap.



FOR FURTHER ASSISTANCE,
CONTACT THE TEREX UTILITIES TECHNICAL SUPPORT TEAM
PHONE: **1-844-TEREX4U (1-844-837-3948)** | EMAIL: **UTILITIES.TECHSUPPORT@TEREX.COM**
