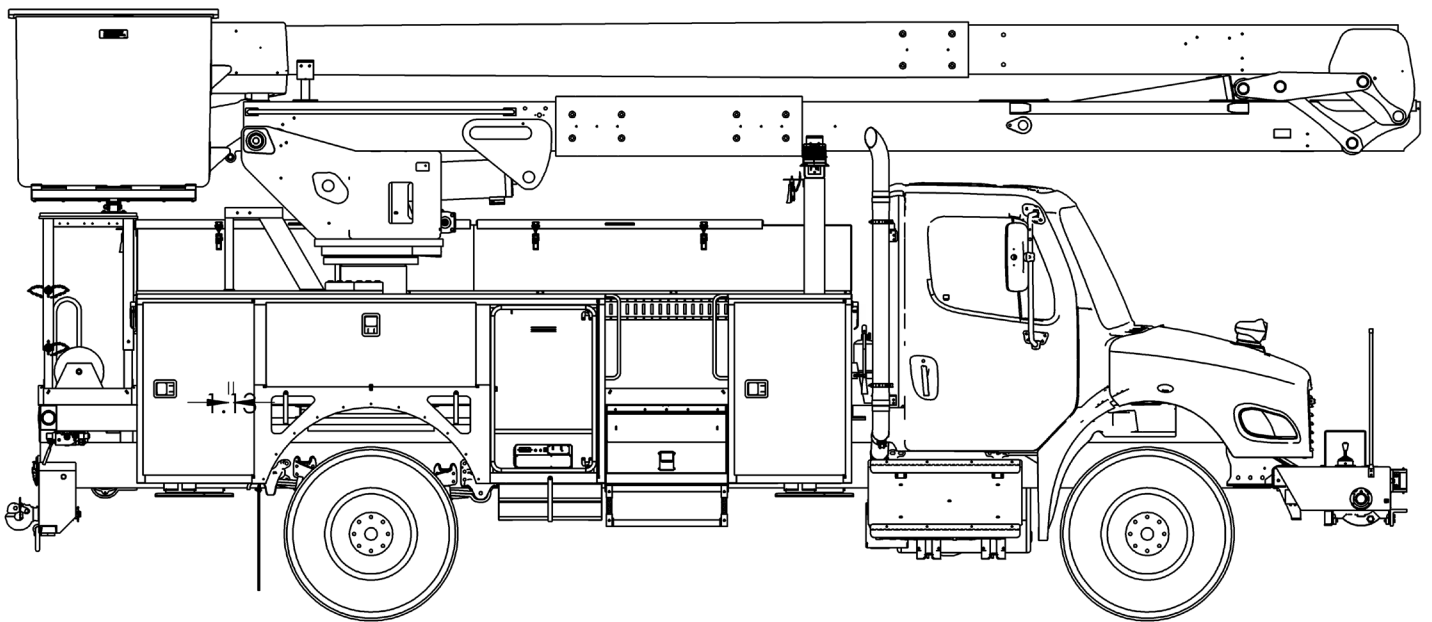




# TECH TIPS

ACCESSING DIGITAL MANUALS WITH A QR CODE

NO. 226



**SERVICE CALL:**  
ACCESSING DIGITAL MANUALS  
WITH A QR CODE



**MODEL(S):**  
ALL TEREX UTILITIES EQUIPMENT  
MANUFACTURED ON OR AFTER  
SEPTEMBER 1ST, 2024



**TOOLS NEEDED:**  
CELL PHONE

TEREX UTILITIES TECHNICAL SUPPORT TEAM

PHONE: 1-844-TEREX4U (1-844-837-3948) | EMAIL: [UTILITIES.SERVICE@TEREX.COM](mailto:UTILITIES.SERVICE@TEREX.COM)



## **DANGER**

Failure to obey the instructions and safety rules in the appropriate Operator's Manual and Service Manual for your machine will result in death or serious injury.

Many of the hazards identified in the Operator's Manual are also safety hazards when maintenance and repair procedures are performed.

## **DO NOT PERFORM MAINTENANCE UNLESS:**

- ✓ You are trained and qualified to perform maintenance on this machine.
- ✓ You read, understand and obey:
  - manufacturer's instructions and safety rules
  - employer's safety rules and worksite regulations
  - applicable governmental regulations
- ✓ You have the appropriate tools, lifting equipment and a suitable workshop.

The information contained in this Tech Tip is a supplement to the Service Manual. Consult the appropriate Service Manual of your machine for safety rules and hazards.



TECH TIP 226 | RELEASED 09.24.2024 | VERSION 1.0  
©TEREX UTILITIES. ALL RIGHTS RESERVED

# CONTENTS

## TECH TIP#226

### TOC

4

| Locate the QR Code

**INTRODUCTION**  
**STEP 1 - STEP 2**

5

| Click on the appropriate manual

| Portal Access

**STEP 3 - STEP 4**

# INTRODUCTION

All units produced on or after September 1st, 2024 will have a QR code printed on the ID Placard. Scanning this QR code will give you access to the unit specific Operator and Maintenance Manual.

## STEP 1

Locate the ID Placard on the unit. Example below links to the customer portal instead of a specific unit. **Figure 1**

## STEP 2

Use the cell phone camera to open the QR code using a browser (Chrome, Firefox, Edge, etc.) **Figure 2**

MODEL	YEAR	UNIT EQUIPPED WITH	1	PLATFORM(S)
OPTIMA-TC55	2024	LBS. PER PLATFORM	700	
SERIAL NUMBER		TOTAL LBS. ALL PLATFORMS	700	
RATED PLATFORM HEIGHT	55 FT	EQUIPPED WITH MATERIAL HANDLING ATTACHMENT:		
ANSI: A92.2-2021		BOOM TIP	YES	NO
		LOWER BOOM	X	X

NON-INSULATED	<input type="checkbox"/>	DESIGN VOLTAGE	INSULATING CATEGORY	C
INSULATED	<input checked="" type="checkbox"/>	QUALIFICATION VOLTAGE	46 KVAC	DATE OF TEST
		YES	NO	
CONFIGURED FOR GLOVE WORK	X			
CHASSIS INSULATING SYSTEM	X			
HIGH RESISTANCE SINGLE STICK UPPER CONTROLS	X			

**CAPACITY RATING**

SEE LOAD CHART PLATE(S) FOR SPECIFIC CONFIGURATION CAPACITIES. UNIT MUST BE OPERATED ON A FIRM AND LEVEL SURFACE WITH ALL THE OUTRIGGERS, WHEN SO EQUIPPED, EXTENDED DOWN TO A SOLID FOOTING. USE OUTRIGGER PADS.

MAXIMUM PRESSURE (PSI):		PNEUMATIC SYSTEM	
HYDRAULIC SYSTEM	3000	CONTROL SYSTEM VOLTAGE	12V DC
HYDRAULIC WINCH			

**OPERATION**

**WARNING:** BEFORE OPERATING UNIT, READ AND UNDERSTAND ALL OPERATING AND SAFETY INFORMATION IN MANUALS AND ALL INFORMATION ON DECALS, LABELS, AND THIS PLACARD.

GENERAL INSTRUCTIONS:

1. Lubricate unit per lubrication chart.
2. Inspect for visible defects or loose objects.
3. Check insulated boom and other insulating material for cleanliness.
4. Check all decals for legibility. Replace if necessary.
5. Set vehicle park brake securely before operation.
6. Start engine or engage power take off (PTO).
7. Extend all hydraulic outriggers to a solid footing.
8. Operate all hydraulic controls slowly and deliberately for smooth movements.
9. Minimum ambient temperature for operation -40 °F. maximum 120 °F. (See Manual)
10. If configured for gloving work, all boom tip covers must be undamaged and in place.

**ATTENTION**

1. Do not alter components without written approval from the manufacturer. All updates in effect, (both the manufacturer as well as ANSI/OSHA) at the time of rebuild should be performed.
2. If unit is remounted by entity other than a Terex South Dakota approved distributor, Terex South Dakota must be contacted to insure that mounting is completed to specifications.
3. If unit is resold, Terex South Dakota must be notified in writing, within 60 days of new owner and what steps were taken to instruct the new owner as to the operation and maintenance of the unit. Copies of operators and maintenance manuals must accompany the unit at the time of sale.
4. All recalls issued by Terex South Dakota must be completed at the time of sale.

THIS UNIT WAS INSTALLED BY: **TEREX SOUTH DAKOTA**

DATE OF COMPLETED UNIT TESTS:

**TEREX** Terex South Dakota, Inc. 16453AK  
3140 15th Ave SE  
Watertown, South Dakota 57201 USA

FIGURE 1

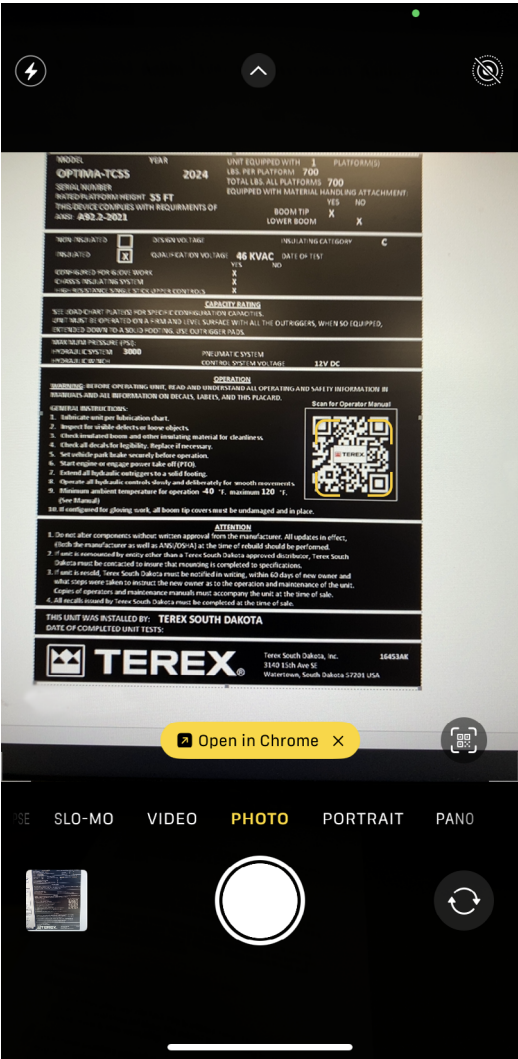
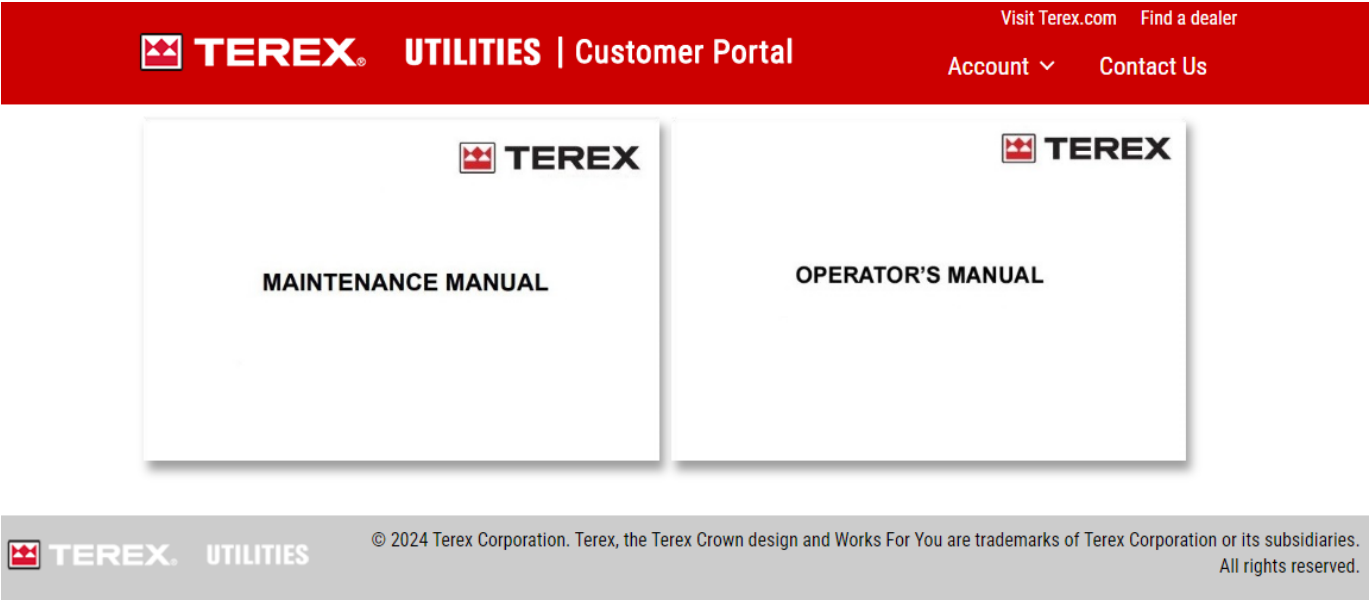


FIGURE 2



STEP 3

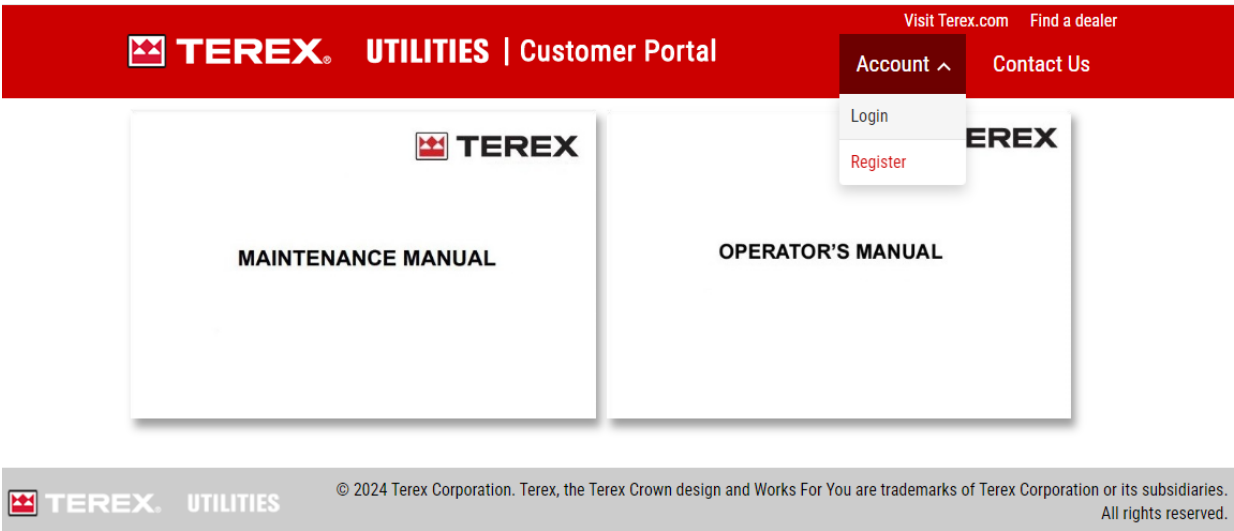
Click on the Operator or Maintenance Manual icons to view the unit specific manual.



STEP 4

Other information such as kitsheets, campaign bulletins, and installation information is available by logging into the portal.

For more information on accessing the portal and the information available through the portal reference **Tech Tip #50**.





FOR FURTHER ASSISTANCE,  
CONTACT THE TEREX UTILITIES TECHNICAL SUPPORT TEAM  
PHONE: **1-844-TEREX4U (1-844-837-3948)** | EMAIL: **[UTILITIES.SERVICE@TEREX.COM](mailto:UTILITIES.SERVICE@TEREX.COM)**

---