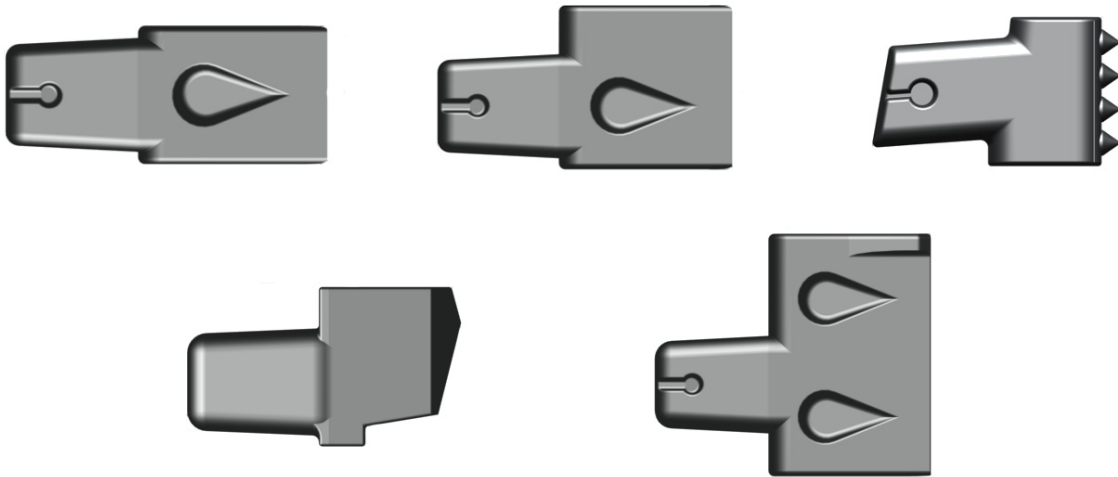


## Service Call:

## Taper-fit series Removal and Installation



## Tools Required:

Pliers

Punch

Horse shoe nail

Brass hammer

## Model(s):

Terex Utilities Taper-fit Augers

## Tech Tip Safety Rules



### **Danger**

Failure to obey the instructions and safety rules in the appropriate Operator's Manual and Service Manual for your machine will result in death or serious injury. Many of the hazards identified in the operator's manual are also safety hazards when maintenance and repair procedures are performed.

### **Do Not Perform Maintenance Unless:**

- You are trained and qualified to perform maintenance on this machine.
- You read, understand and obey:
  - manufacturer's instructions and safety rules
  - employer's safety rules and worksite regulations
  - applicable governmental regulations
- You have the appropriate tools, lifting equipment and a suitable workshop.

The information contained in this tech tip is a supplement to the service manual. Consult the appropriate service manual of your machine for safety rules and hazards.

## Caution:

Always wear safety glasses and gloves when removing or installing teeth

Never strike a tooth with a hammer or other hard object

## Step 1

Removing Taper-fit Tooth

Use pliers to bend back the nail at the back of the tooth.



## Step 2

Place a punch on the backside of the tooth and strike punch with a brass hammer (if needed) to remove the tooth.



## Step 3

Installing Dirt Tooth

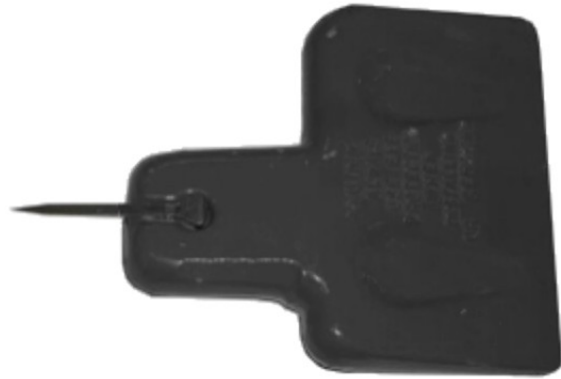
Position tooth into the block while setting a horse shoe nail into the groove on the new tooth.



A000010  
Horse Shoe Nail (RH8)



A000465  
Horse Shoe Nail (#12)



## Step 4

Using a brass hammer, gently pound the tooth to fit and use pliers to bend nail back upon the tooth block.

