

Modular Plants MHS620X Screen Module



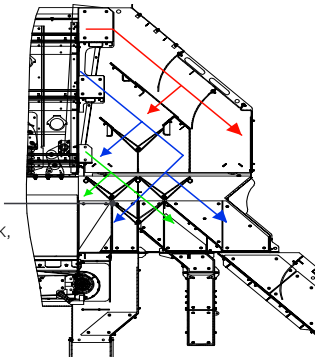
Simplicity[®] Modular Plants

MHS620X Screen Module

The MHS620X modular screen features the ESX “Extra Clearance” 6’ x 20’ horizontal screen with elliptical stroke design taking the legendary oval stroke screen to the next level. The ESX will produce high quality materials with accurate sizing, is designed to eliminate screen bottlenecks and improve maintenance safety with increased distance between screen decks. In addition to the set-up time and ease of operation complimented by the simplicity of the modular product range, all MPS modular crushers and modular screens, bolt together on site with basic hand tools. Designed with logistics in mind, the MHS620X module ships in two 40’ shipping containers plus the screen.

All Gates (Except lower) allow for 25, 50, 75, 100% blending capability

Lower gate may be located forward, back, or vertical 2 gates for 0%, 25% or 50% blending



Blending capabilities section view

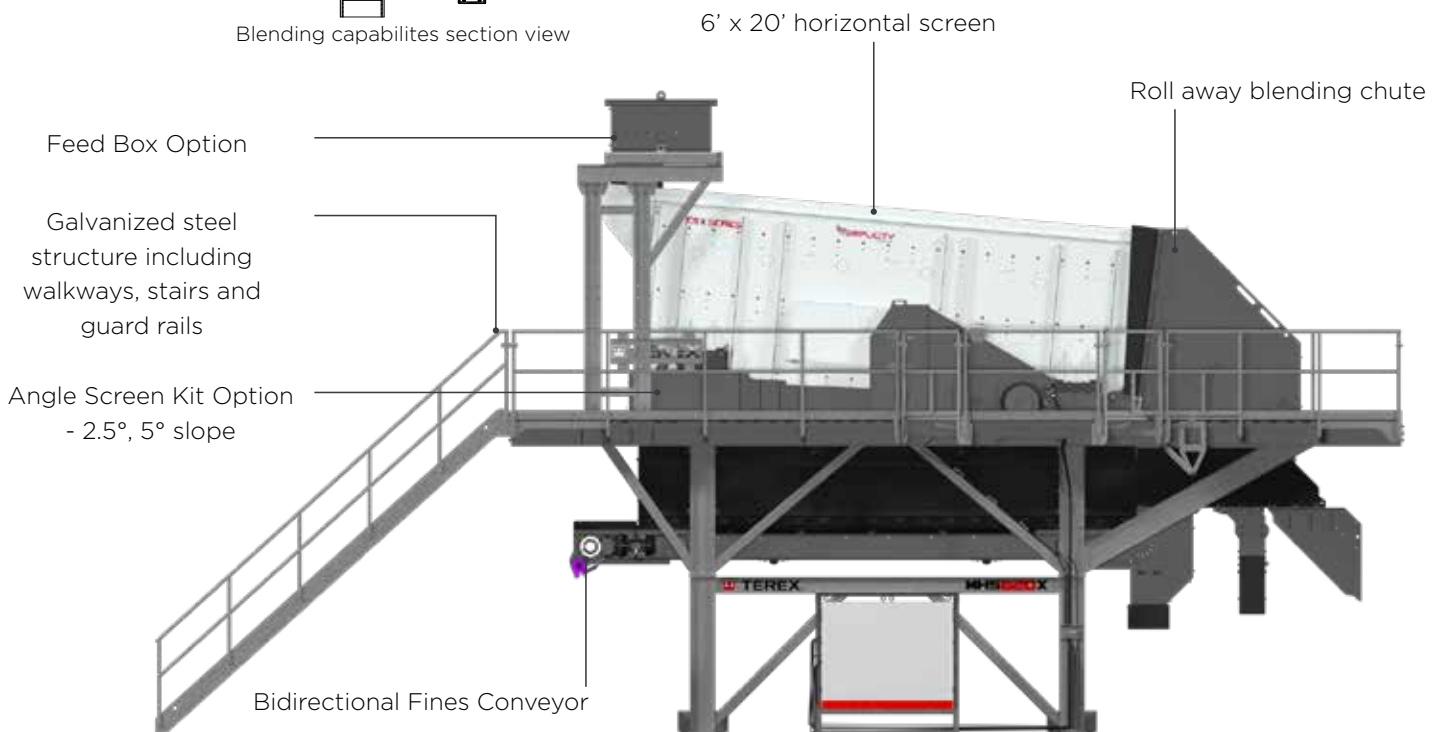
Standard Features

Module Structure

- CE compliant Galvanized steel structure including walkways, stairs and guard rails
- Extra-heavy-duty I-beam frame with rigid diagonal truss construction
- Bolts together on site, quick set-up time with basic tools
- Systematically packed in shipping containers for quick site setup and easy transport
- Integrated rolling chute mechanism and integrated trouser leg chutes
- 4-section (25%) blending gate system for all decks
- 2-section (25%) blending gates for bottom deck
- Deck product combinations: top-center; center-bottom; bottom-fines; center up to top; bottom up to center
- Flop gates are made from AR 400 steel
- Easy access belt take-ups
- High performance belt wiper
- Mounting Feet for easy setup

Underscreen Conveyor (Dry Screening Plant)

- 36” (900mm) underscreen fines conveyor
- Bi Directional Conveyor - Ability to convey fines off plant or forward into the lower chute work
- 10 hp (7.5kW) electric motor, vulcanized 2-ply belt
- Direct drive motor and gearbox



*Shown with electrical switchgear panel, 5 Slope, feed box and mounting feet options

ESX Horizontal Screen Standard Features

- 6' x 20' (1924mm to 6106mm) 3-deck extra clearance horizontal screen with oval stroke with adjustable angle, stroke and speed
- Spring mounts adjust for 0°, 2.5°, 5° slope installations
- ESX (Extra Clearance Screen) provides additional clearance compared to typical horizontal screen between each deck for easy maintenance access
- Heavy-duty fully braced single crown steel deck construction
- Exclusive patented and patent-pending features for durability and easy maintenance:
 - Low maintenance vibration damper system
 - "Flow-through" bearing lubrication
 - Baffle splash lubrication system
 - Double O-ring sealed for life vibrator construction
- Spherical washer design eliminates sidewall welds
- Huck-bolted screen box construction (no welds)
- Extended life coil spring suspension
- Replaceable bolt-on spring guides
- Gland type non-wearing shaft seal
- Tool-less oil level sight glasses

Specifications	Imperial	Metric
Screen Size	6' x 20'	1924mm to 6106mm
Screen Motor	50 hp	37 kW
Underscreen Conveyor Width	36"	900 mm
Underscreen Conveyor Motor	10 hp	7.5 kW
Estimated Module Weight	63,600 lbs	28,848 kg

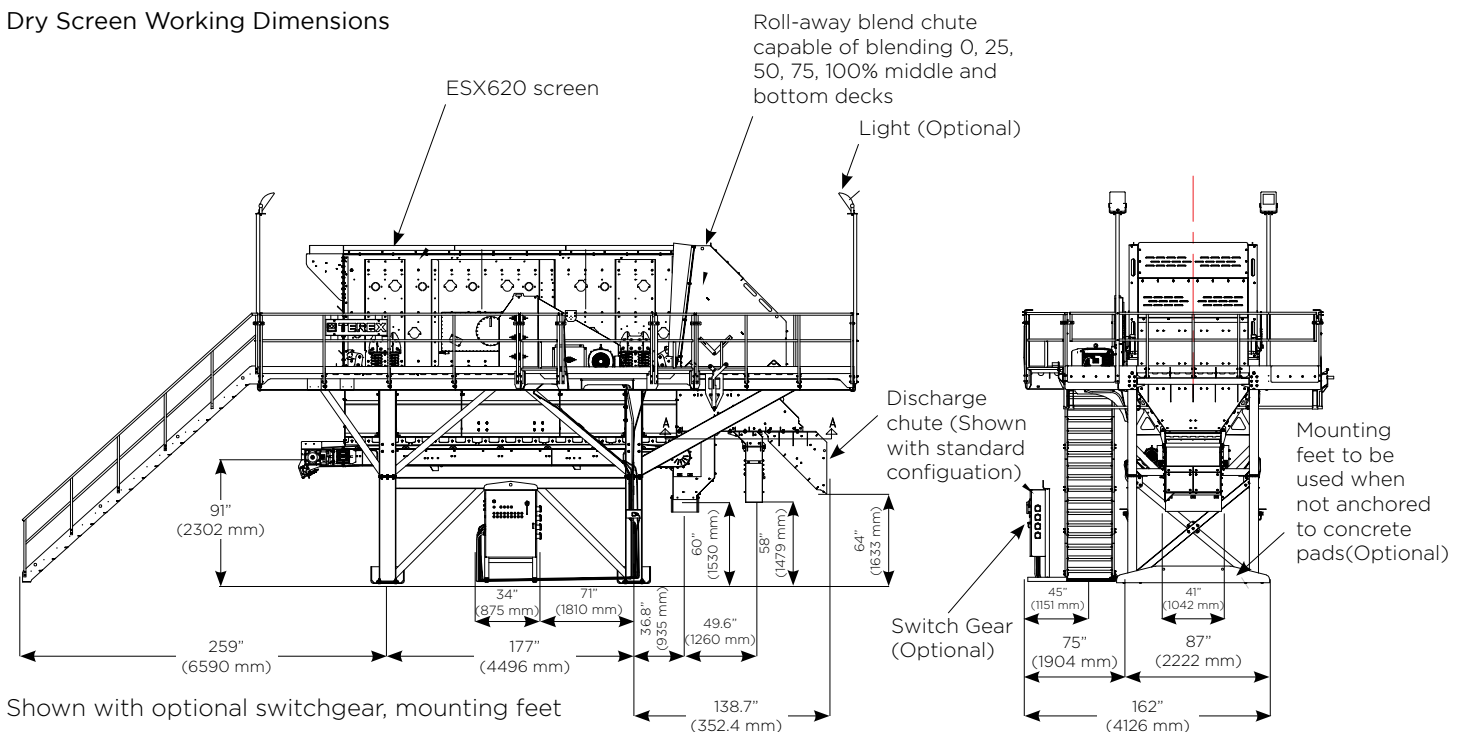
Modular Optional equipment

- Feed Box and Support Structure for Dry Screening
- Wash Option
- Electric power panel for screen and on-plant collection conveyor
- Angle Screen Kit - 2.5°, 5° slope

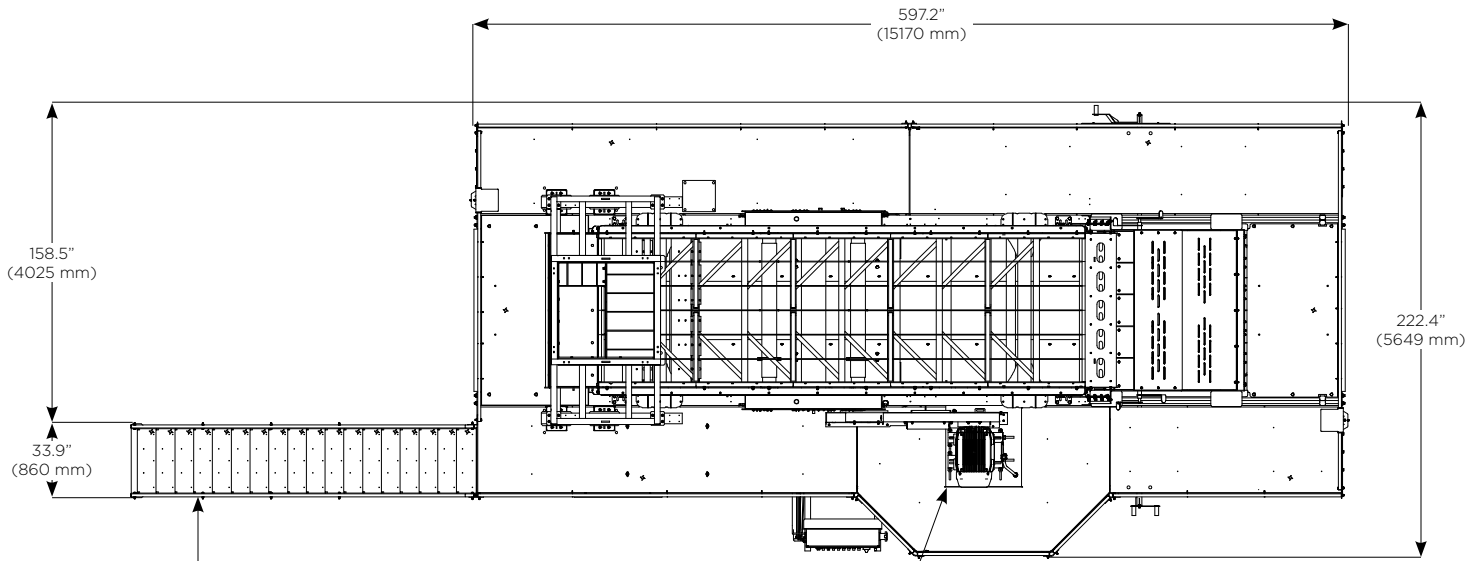
Screen Optional equipment

- Medium Scalper Side Tension Single Crown
- Urethane Flat Deck
- Urethane Modified Flat Deck
- End-tension bottom deck
- Top Deck Extension
- Feed Box Liner Upgrade
- Deck Patented bottom deck deflector plates boost efficiency
- Replaceable magnetic deck wear liners
- Wire screen cloth
- TOPS2.0 Terex Oil Purification System

Dry Screen Working Dimensions



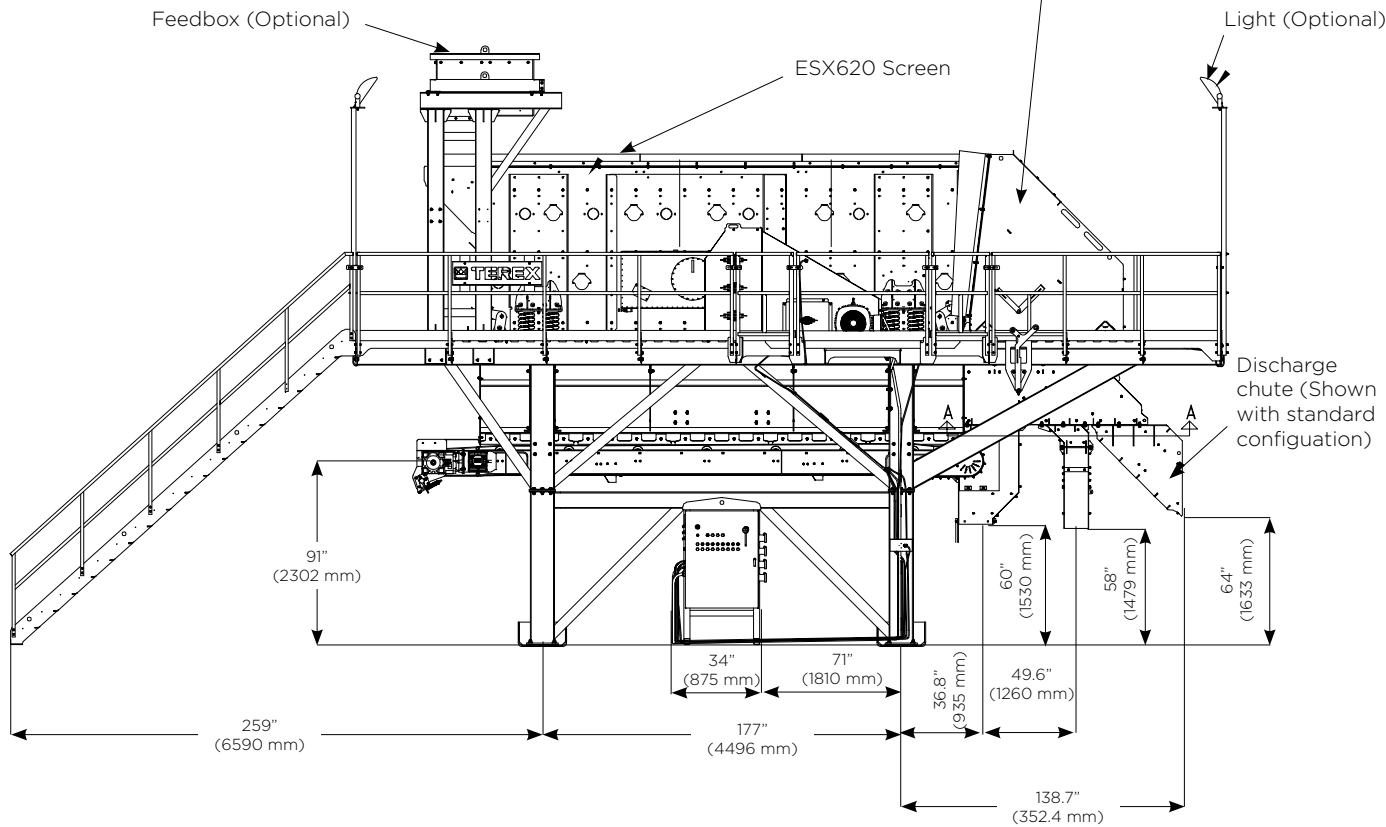
Dry Screen at 0 Degree Inclination
Shown with optional equipment



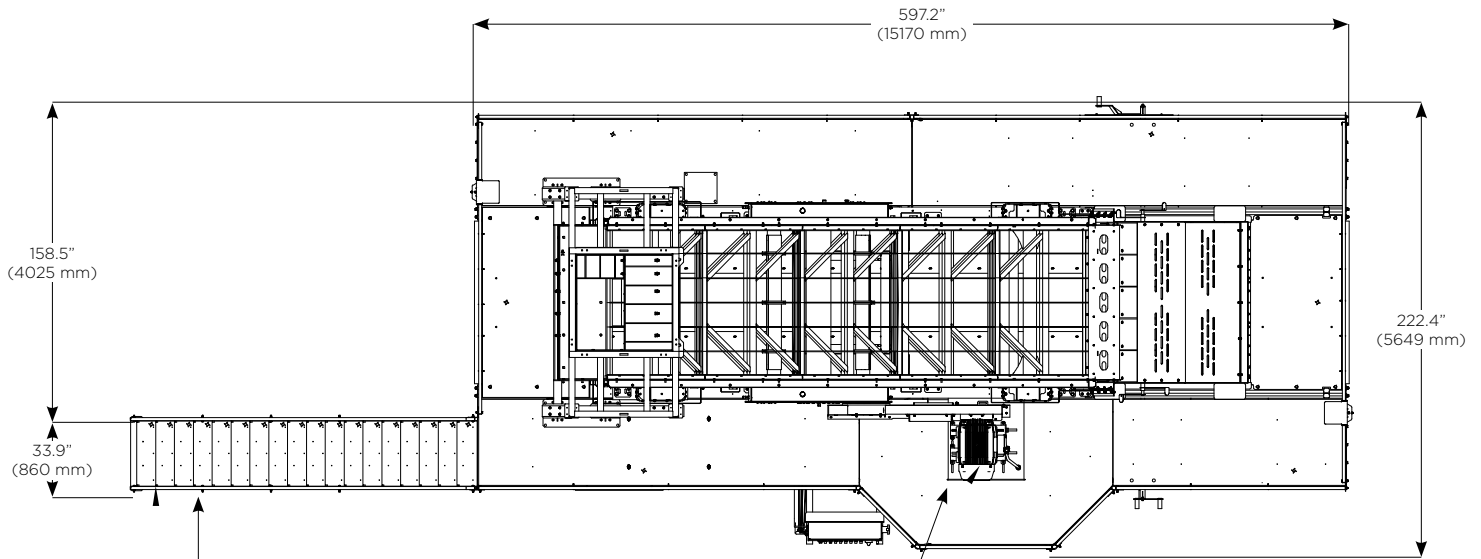
Stair way may be mounted on any corner of the plant

50 hp electric motor drive

Roll-away blend chute capable of blending 0, 25, 50, 75, 100% middle and bottom decks



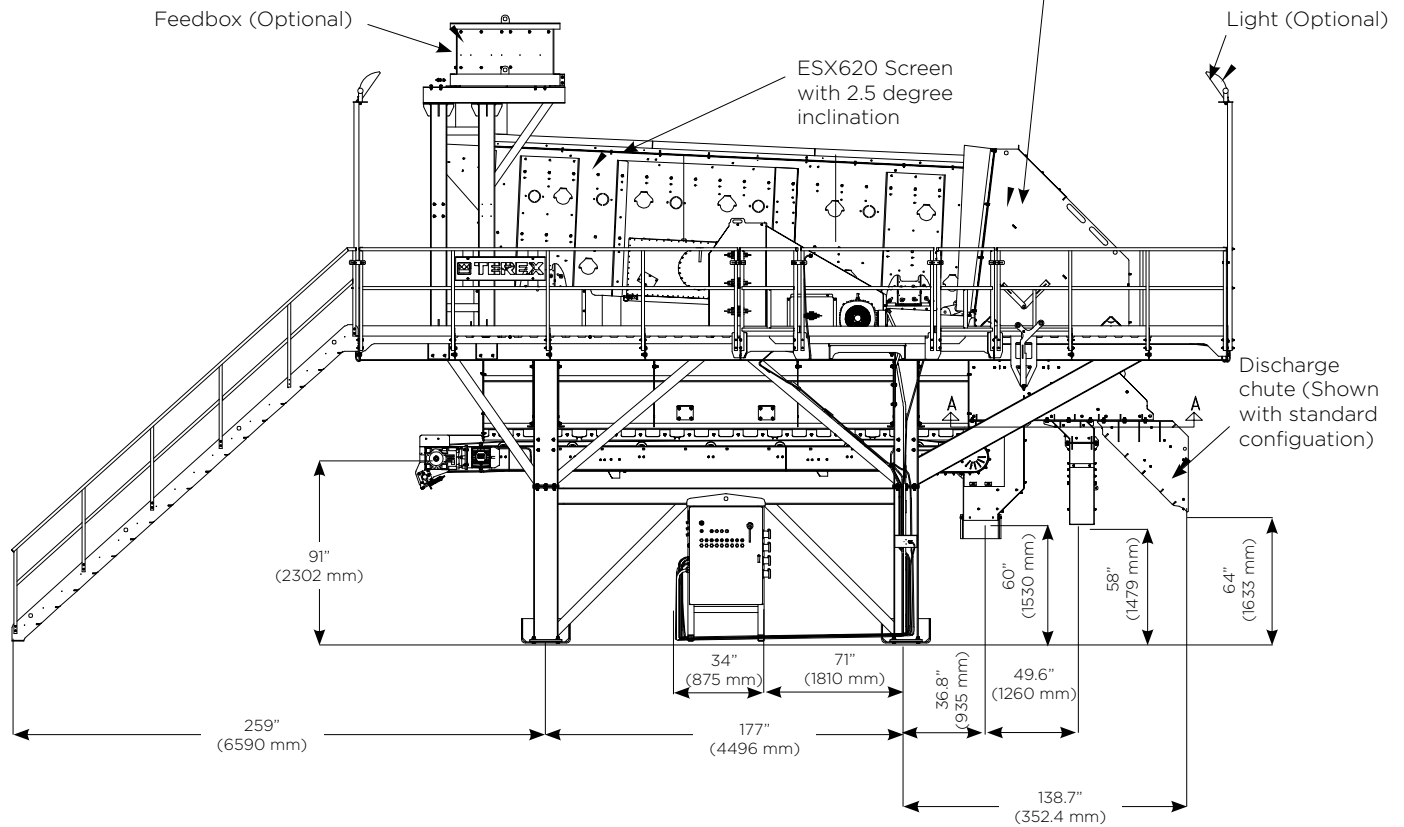
Dry Screen at 2.5 Degree Inclination
 Shown with optional equipment



Stair way may be mounted on any corner of the plant

50 hp electric motor drive

Roll-away blend chute capable of blending 0, 25, 50, 75, 100% middle and bottom decks



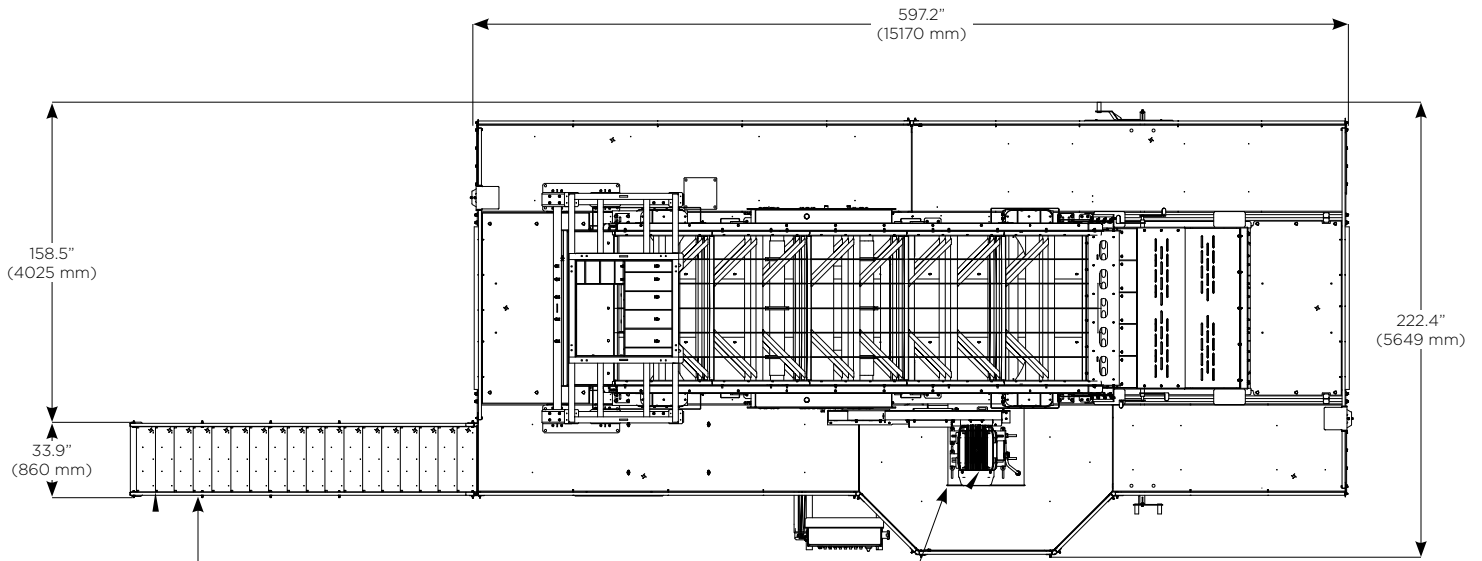
Feedbox (Optional)

ESX620 Screen with 2.5 degree inclination

Light (Optional)

Discharge chute (Shown with standard configuration)

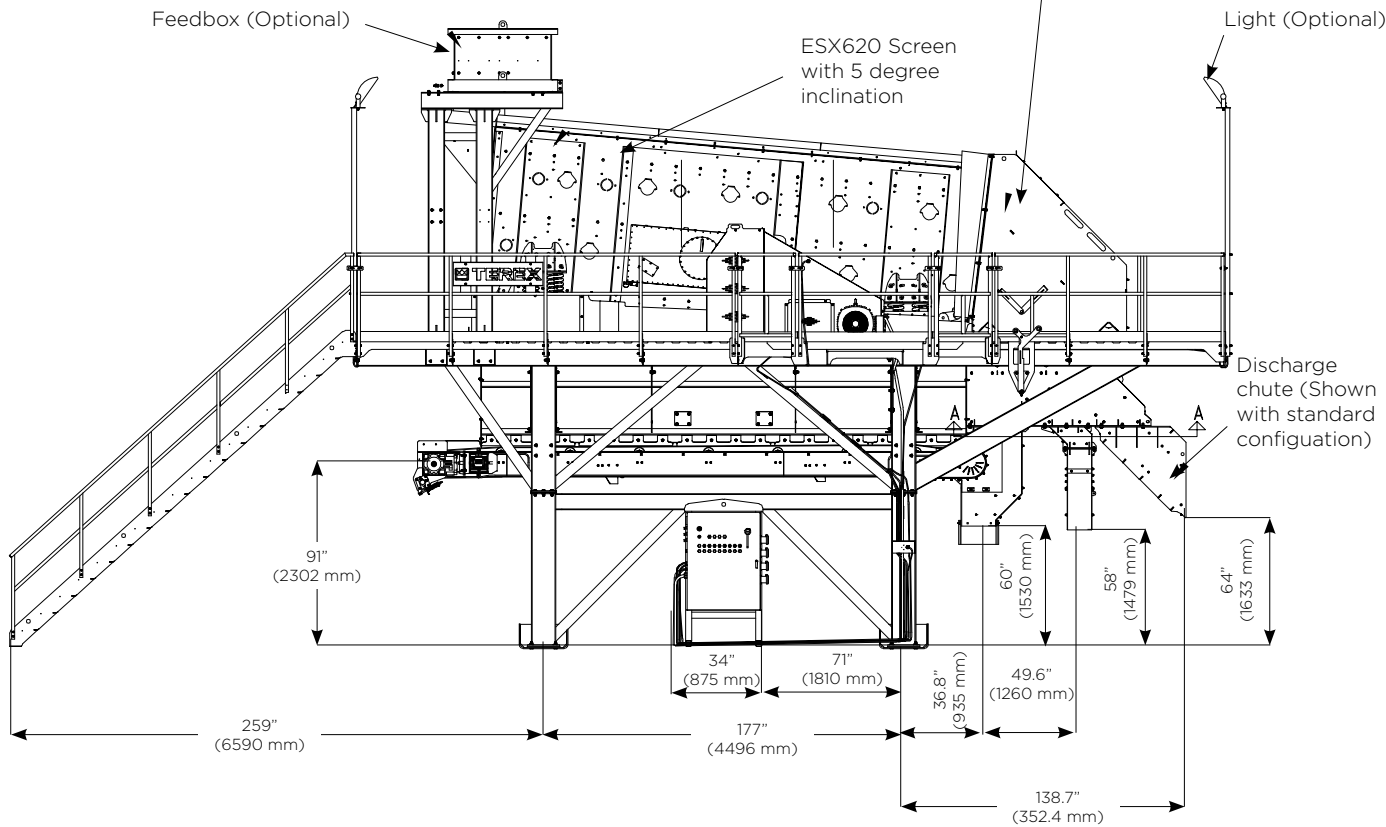
Dry Screen at 5 Degree Inclination
Shown with optional equipment



Stair way may be mounted on any corner of the plant

50 hp electric motor drive

Roll-away blend chute capable of blending 0, 25, 50, 75, 100% middle and bottom decks



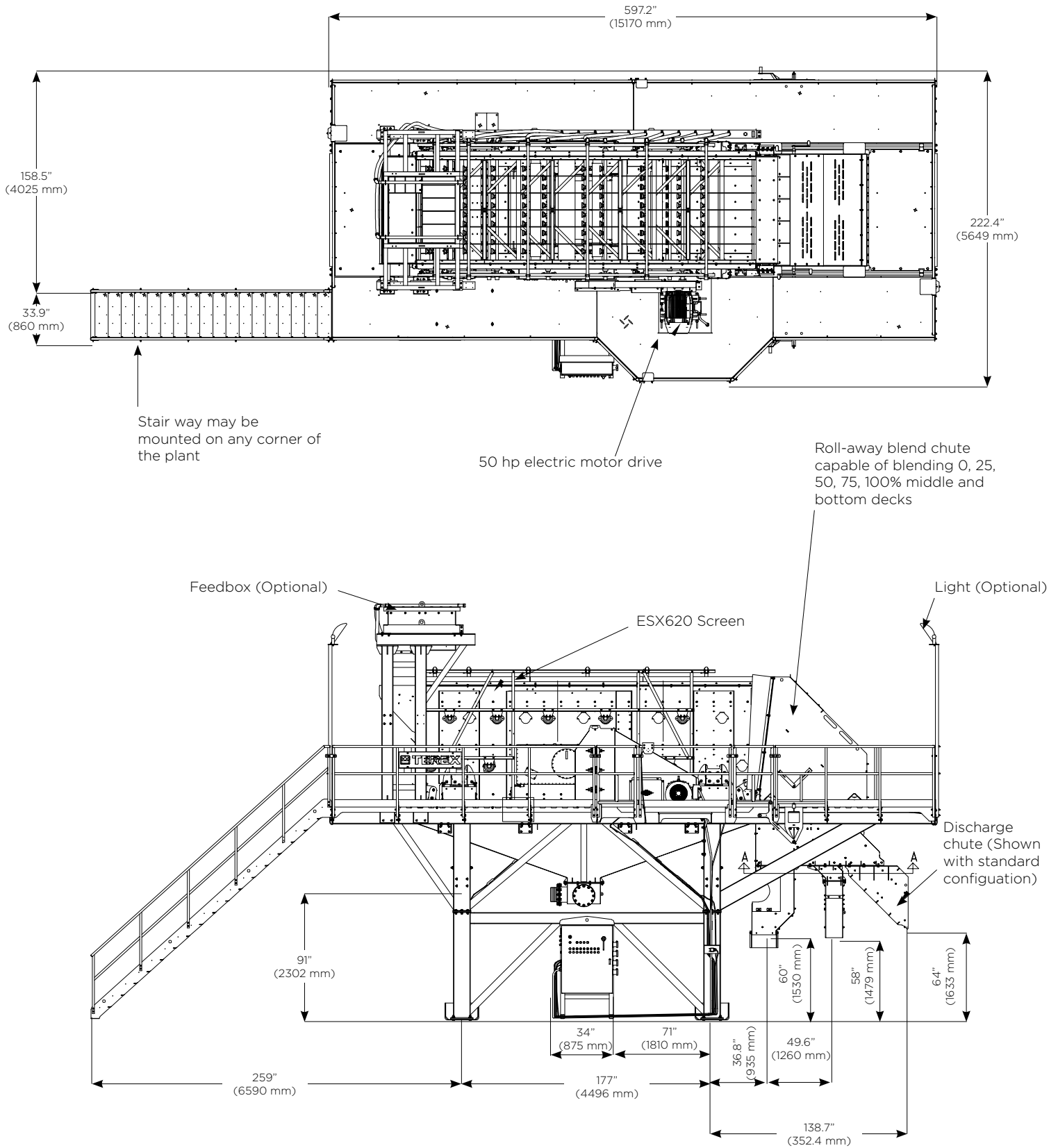
Feedbox (Optional)

ESX620 Screen with 5 degree inclination

Light (Optional)

Discharge chute (Shown with standard configuration)

Wash Screen Working Dimensions





www.terexmps.com

Product specifications and prices are subject to change without notice or obligation. The photographs and/or drawings in this document are for illustrative purposes only. Refer to the appropriate Operator's Manual for instructions on the proper use of this equipment.

Failure to follow the appropriate Operator's Manual when using our equipment or failure to act responsibly may result in serious injury or death.

The only warranty applicable to our equipment is the standard written warranty applicable to the particular product and sale, and Terex makes no other warranty, express or implied. Terex, the Terex Crown design, Cedarapids, Canica, Simplicity, Jaques, El-Jay and Rollercone are trademarks of Terex Corporation or its subsidiaries. All rights are reserved. © September 2023

