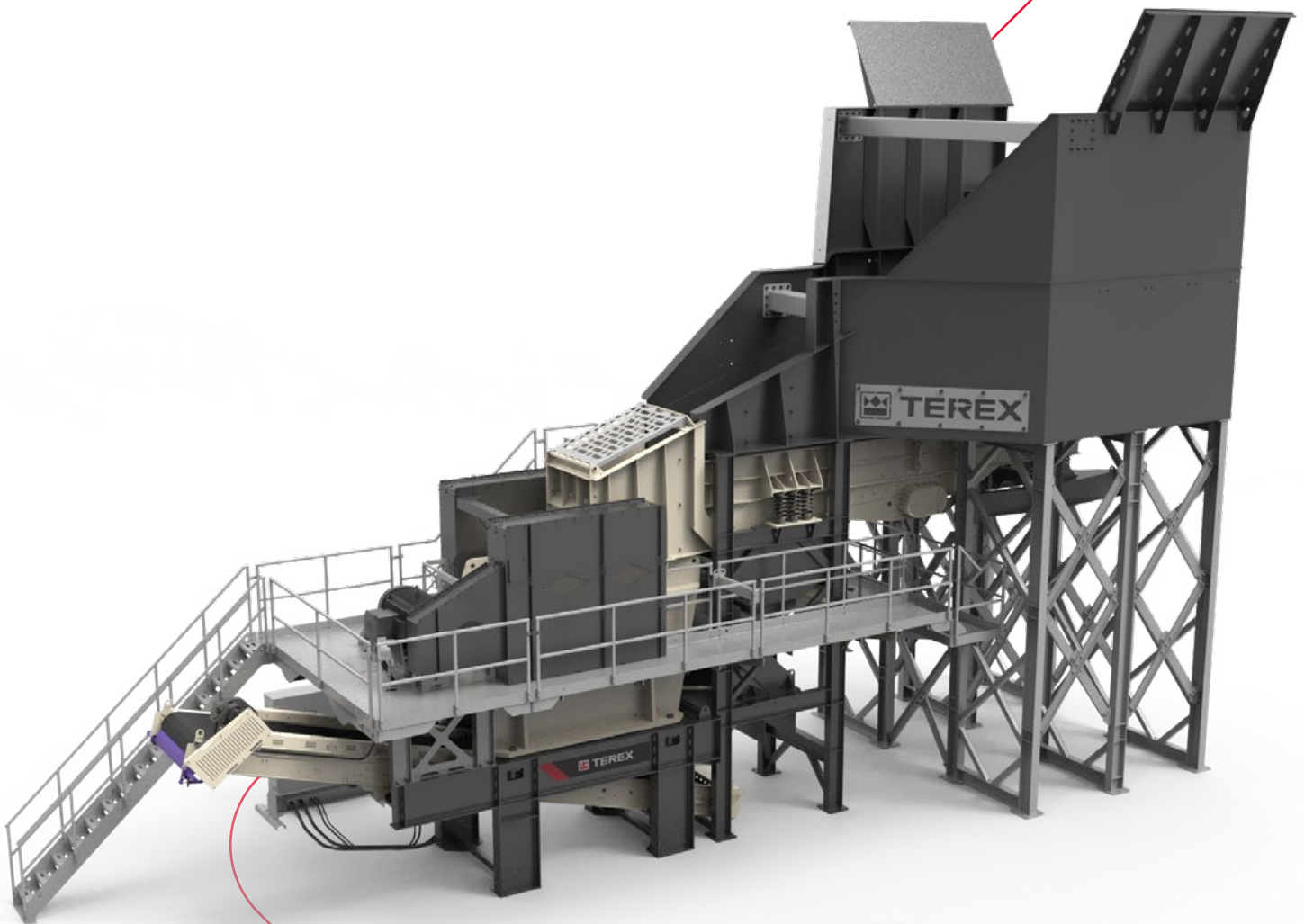


CEDARAPIDS®

A TEREX BRAND

Modular Plants

MJ47 Jaw Module



A world working better™

 **TEREX®** MPS

Cedarapids® Modular Plants

MJ47 Jaw Module

The Cedarapids® MJ47 modular jaw crusher is designed for large quarries or contractors that want a stationary type design without the complexity of a normal stick-built plant. The MJ47 module features the robust, 36" x 48" (914mm x 1219mm) ST47 jaw crusher. Other key features include the 51" x 24' (1.3 m x 7.3 m) heavy-duty double-deck vibrating grizzly feeder and a large capacity truck dump hopper.

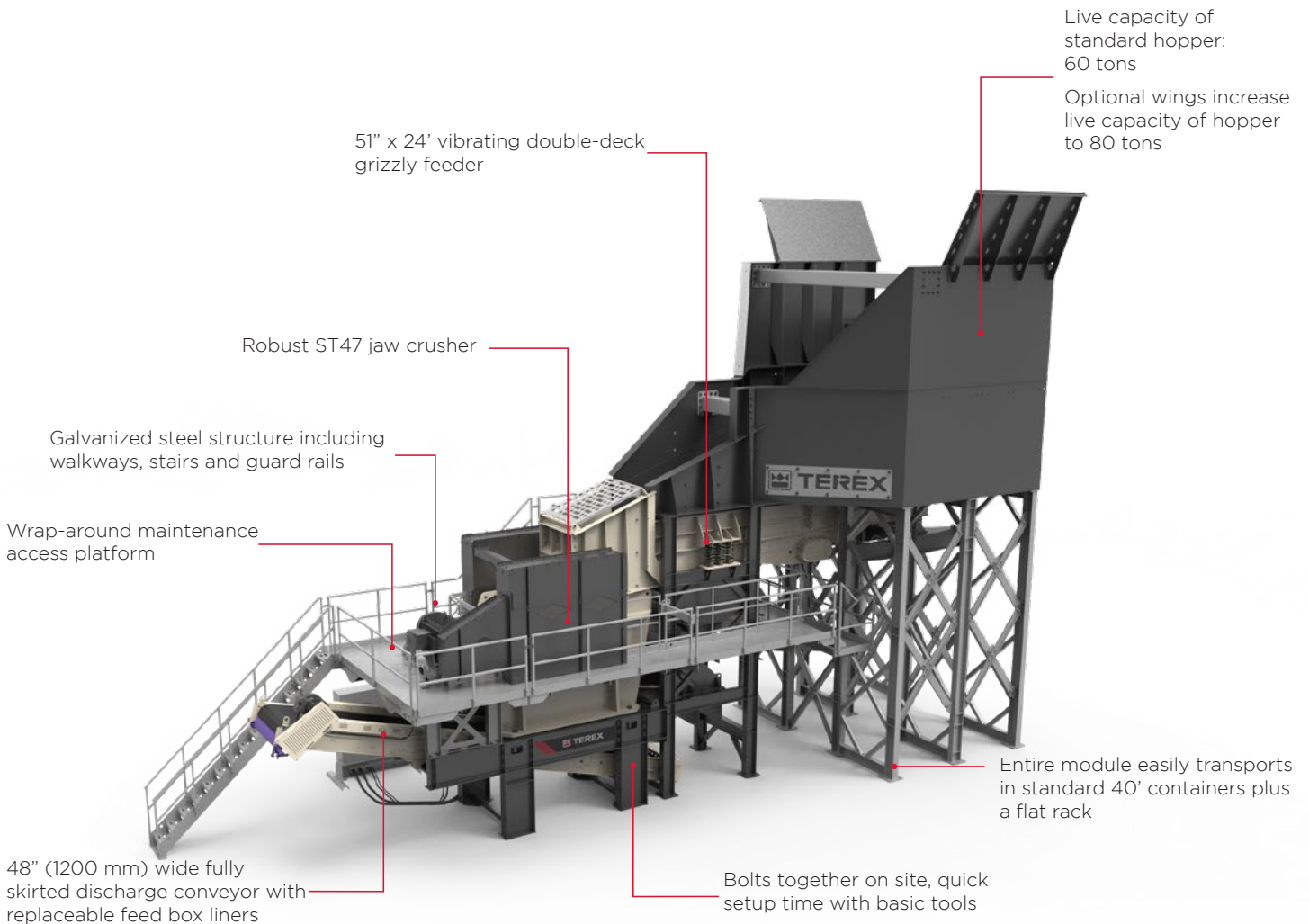
Standard Features

Module Structure

- Bolts together on-site, quick setup time with basic tools
- Robust weather-protected control panel with user-friendly controls
- Galvanized steel structure including walkways, stairs, and guard rails
- Systematically packed in shipping containers for quick site setup and easy transport

Jaw Crusher

- ST47 jaw crusher 36" x 48" (914mm x 1219mm)
- V-belt drive, 200 hp (150kW) motor with guard
- Robust one-piece jaw frame design
- Large diameter, forged main shaft
- Single, rocking-end toggle requires no lubrication



Unit shown with optional hopper wings, hopper extension, and electrical switchgear panel.

Truck Dump Hopper

- Rock box design with 5/8" (15mm) thick hopper; 3/4" (20mm) liner along wear edge of hopper
- Hopper width: 16'7" (5047mm)
- Live capacity of hopper: 60 tons (54.4 tonnes)

Vibrating Grizzly Feeder

- 51" x 24' (1.3m x 7.3m) OFC120A vibrating double-deck grizzly feeder
- Independently mounted pivot-type motor base
- V-belt drive, 50 hp (37kW) motor and guarding
- 1/2" (12.7mm) wear resistant side and floor liner plates
- 51" (1.3m) x 14' (4.3m) pan feeder
- Stepped grizzly length: 10' (3.04m); two 5' (1.5m) sections with adjustable openings

Plant Chute-Work

- Grizzly fines/bypass 2-way chute discharges to product conveyor or to off-plant fines conveyor

Discharge Conveyor

- 48" x 26' (1200mm x 8m) conveyor with 3-ply belt
- 20 hp (15kW) electric drive motor
- Impact bars at feed point
- High spec scraper at head drum
- Skirted full length

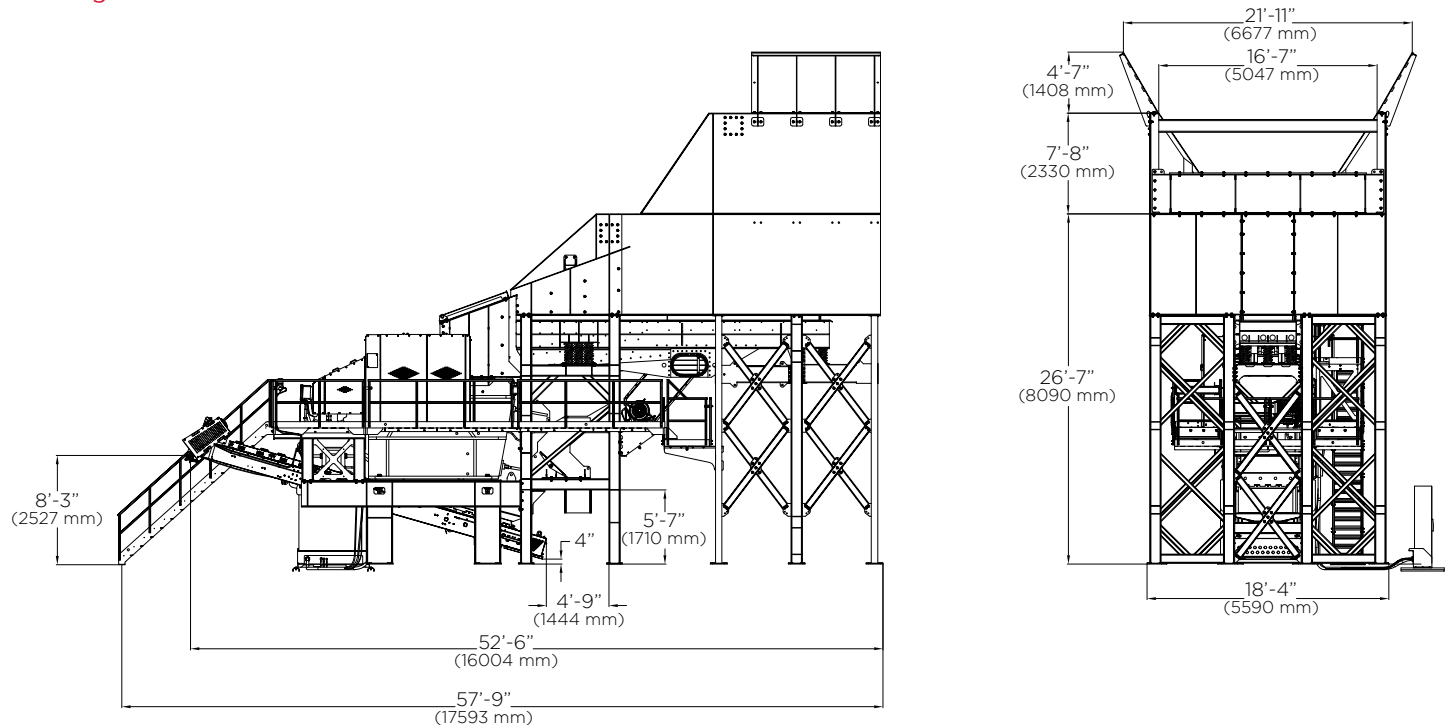
Jaw Specifications

Motor Size	200 hp	150 kW
Feed Opening	36" x 48"	914 x 1219 mm
Crusher Weight	81,550 lb	37,068 kg
Setting Range	4" - 9"	100 - 225 mm
Capacity	210 - 670 TPH	190 - 610 MTPH
Standard Adjustment	Shim	
Frame Style	Welded	
Lubrication System	Grease	

Optional Equipment

- Hopper wings
- Hopper extension
- Extended length discharge conveyor
- Rock breaker structure and walkways to module
- Electrical switchgear panel

Working Dimensions



Unit shown with optional hopper wings, hopper extension, and electrical switchgear panel.



www.terexmps.com

November 2020. Product specifications and prices are subject to change without notice or obligation. The photographs and/or drawings in this document are for illustrative purposes only. Refer to the appropriate Operator's Manual for instructions on the proper use of this equipment.

Failure to follow the appropriate Operator's Manual when using our equipment or failure to act responsibly may result in serious injury or death.

The only warranty applicable to our equipment is the standard written warranty applicable to the particular product and sale, and Terex makes no other warranty, express or implied. Terex, the Terex Crown design, Cedarapids, Canica, Simplicity, Jaques, El-Jay and Rollercone are trademarks of Terex Corporation or its subsidiaries. All rights are reserved. © 2020

