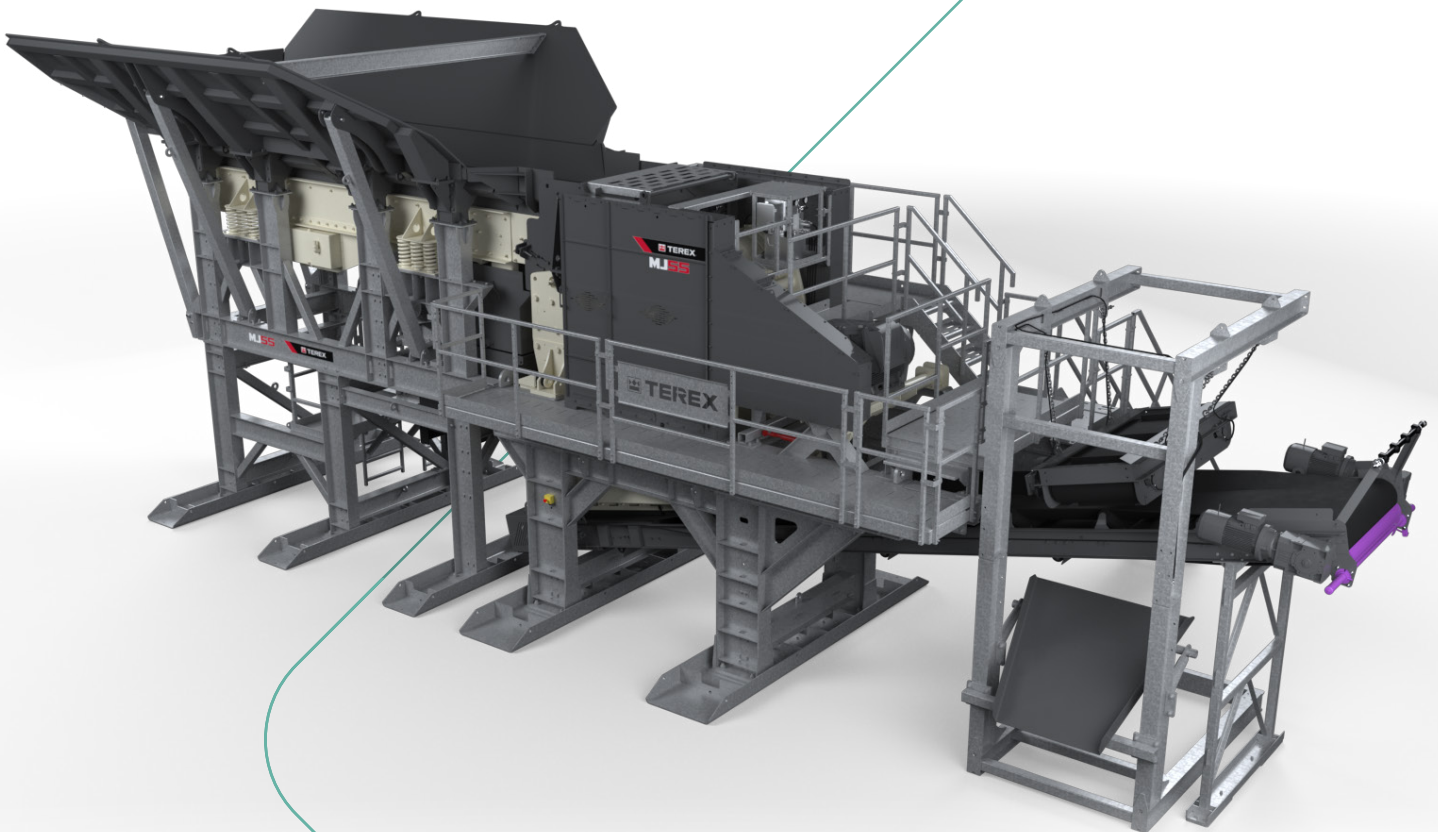




Terex® MPS Modular Plants

MJ55 Jaw Module



A world working better™

Terex® MPS Modular Plants

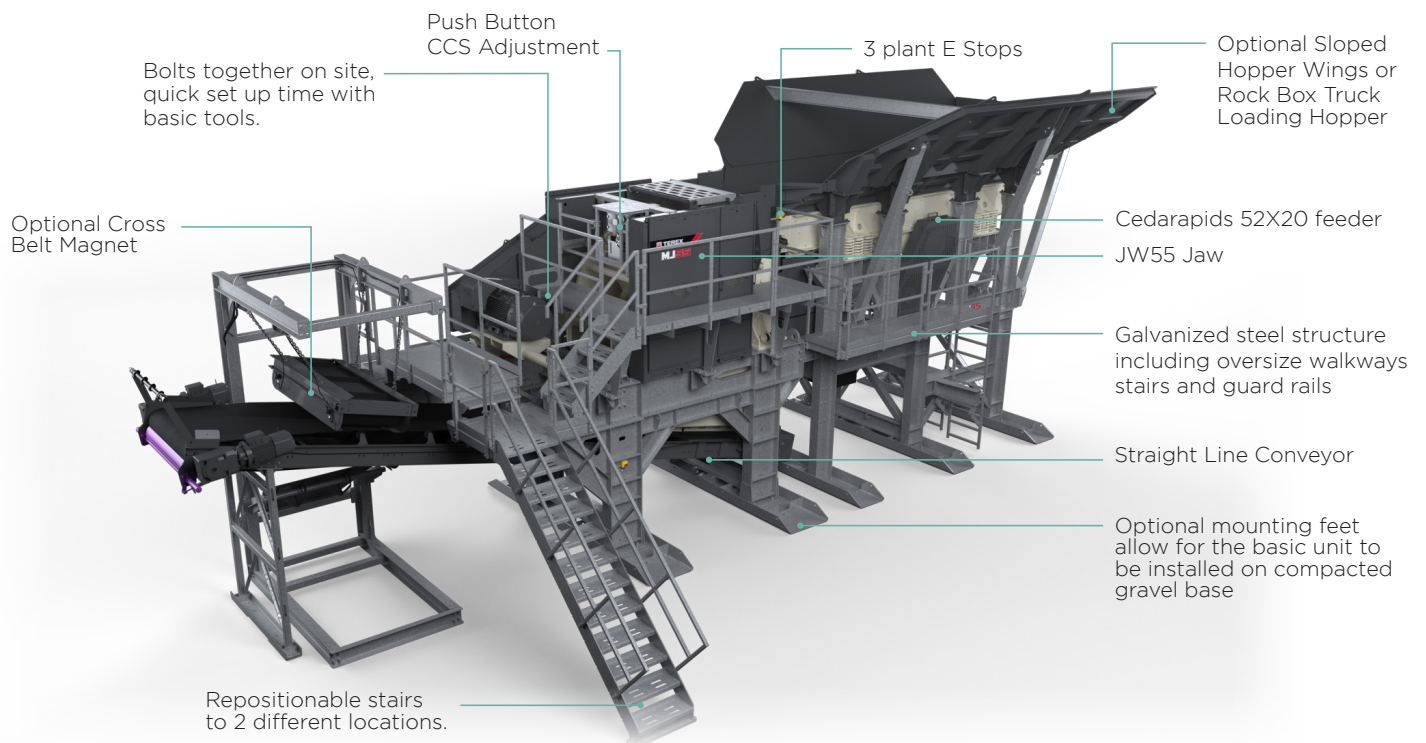
MJ55 Jaw Module

Flexible, Robust Design with Logistics in Mind

Designed around our proven, high-performance Cedarapids® JW55 jaw crusher, the Terex MPS® MJ55 Modular Jaw Crusher is designed for large quarries or contractors that want a stationary type design without the complexity of a normal stick-built plant. The modular structure can be transported in standard shipping containers plus a flat rack for the crusher and can be bolted together quickly on site with basic tools. The three configurations offered for the feed hopper allow for the optimum size to match up to the equipment that is being used to load the machine.

Key Features

- Fast set-up time
- Ease of operation
- On-site assembly with minimal wiring
- Integrates with existing plant configuration
- All electric
- Compact – can be transported in containers and by road
- Robust, weather-protected panels with user-friendly controls
- Galvanized steel structures including walkways, stairs and guard rails
- Extra heavy-duty I-beam frames
- CE-compliant modules, structures and components
- Manual/Automatic one touch startup with start sequencing



Main Components

- Galvanized Modular Structure, steps and guardrails

Durability

- Fully Galvanized Structure
- All electric
- Heavy Duty Nema Type 12 / IEC60529 Control Panel (Hoffman style)
- Rock shelves or bolt in liners in high wear areas

Set Up

- Easy assemble and disassemble
- Pre-assembled sections to enable quick set up time and as few lifts as possible from container
- Lift points on all parts and assemblies over 50lbs

Transport (Standard Build)

- 4 X 40’ Standard Open Top Container
- 1 X 40’ Flat Rack

Options

- Electrical Switch Gear
- Off Plant conveyor starter kit
- 16’ (4.8m) Extended Sloped Hopper Wings
- 18’ (5.5 m) Wide Truck Loading Hopper (Rock box style)
- Magnet

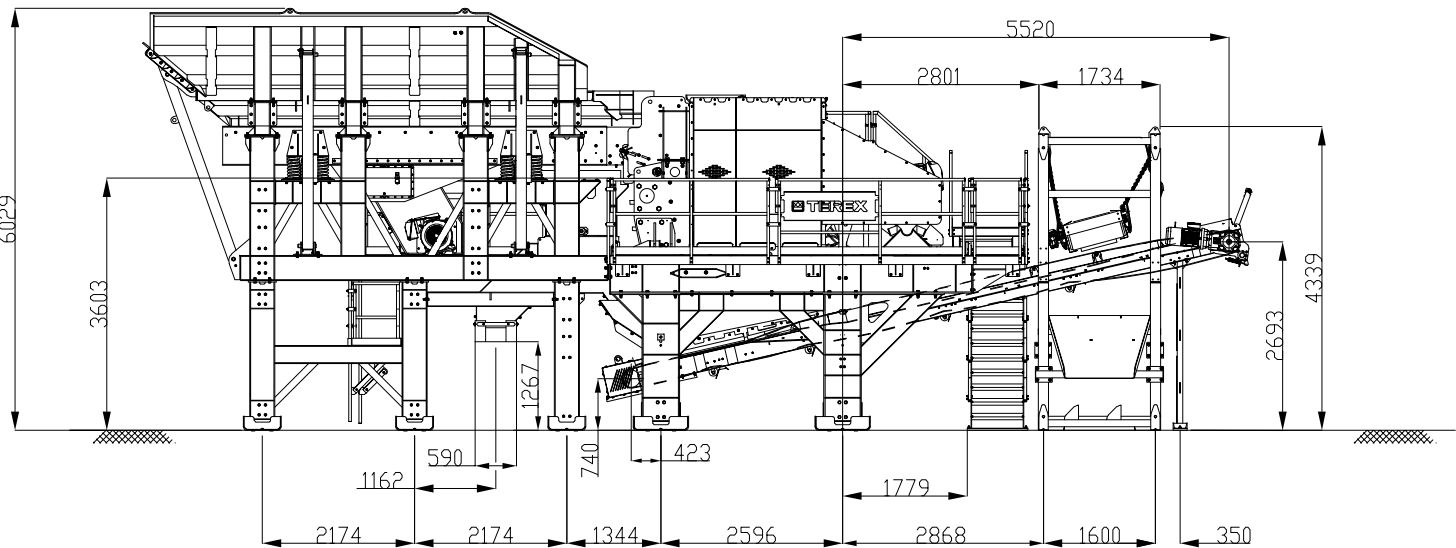
Jaw Specifications

Feed Opening	32 x 55 in	820 x 1400 mm
Maximum Feed Size	27.5 in	700 mm
Recommended CSS Range	3.5 - 9 in	88 - 225 mm
Max Tonnage at Max CSS	700 tph	
Maximum Power	200 hp	150 kW
Maximum RPM	250	250
PCD of Pulley	64.8 in	1,645 mm
Heaviest Lift	21,370 lb	9,700 kg
Total Weight	57,860 lb	26,250 kg
Flywheel Diameter	65 in	1,650 mm
Flywheel Face	11 in	275 mm
Stationary Jaw Length	70 in	1,775 mm
Movable Jaw Length	69 in	1,750 mm

Weights

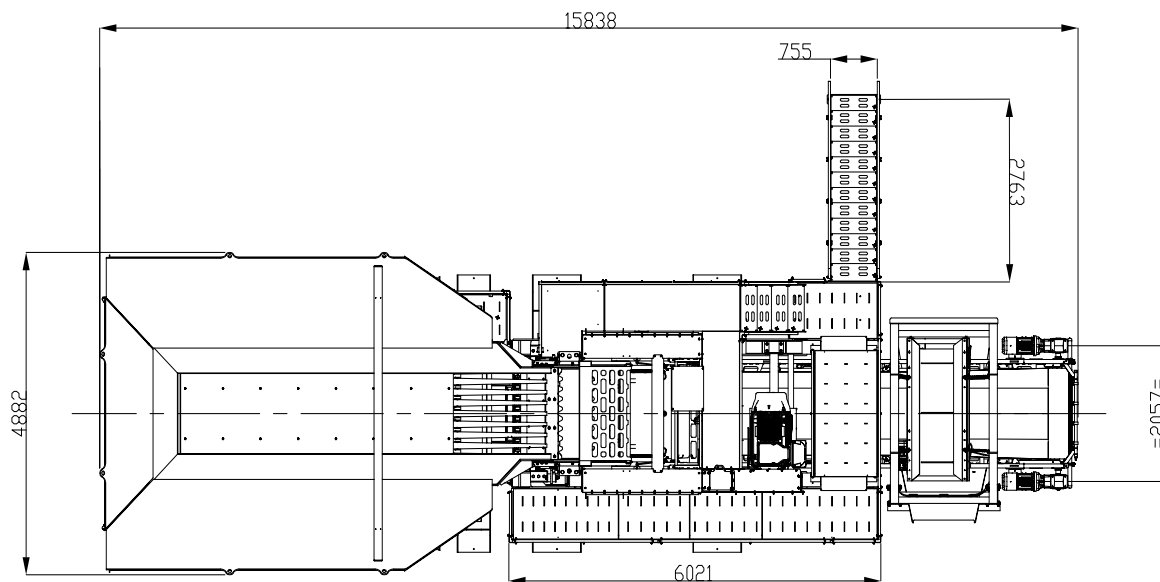
MJ55 with standard wing hopper including jaw and VGF	61.7 USt	56 t
Optional wing hopper	+ 7.6 USt	+ 6.9 t
Optional truck loading hopper	+ 32.5 USt	+ 29.5 t

Working Dimensions



Drawing includes optional extended sloped hopper wings, mounting feet and magnet.

Working Dimensions



Drawing includes optional extended sloped hopper wings, mounting feet and magnet.

www.terexmps.com

June 2020. Product specifications and prices are subject to change without notice or obligation. The photographs and/or drawings in this document are for illustrative purposes only. Refer to the appropriate Operator's Manual for instructions on the proper use of this equipment.

Failure to follow the appropriate Operator's Manual when using our equipment or failure to act responsibly may result in serious injury or death.

The only warranty applicable to our equipment is the standard written warranty applicable to the particular product and sale, and Terex makes no other warranty, express or implied. Terex, the Terex Crown design, Cedarapids, Canica, Simplicity, Jaques, El-Jay and Rollercone are trademarks of Terex Corporation or its subsidiaries. All rights are reserved. © 2020