

CEDARAPIDS®
A TEREX BRAND

High Frequency Screen Plant

CRS618HF



A world working better™

 **TEREX® MPS**

Cedarapids® Portable Plants

Portable Screen Plant

Exceptional
Productivity
& Efficiency



Improves
clearance to
change screen
wire

Strut holding up conveyor



Self aligning
feed distribution
plate requiring no
adjustments to
change slope

Hinged service
platform is level
when screen is
lowered

Conveyor support
telescopes when
screen lowered for
maintenance

Pinned sliding
support leg

Rubber booted
discharge chutes

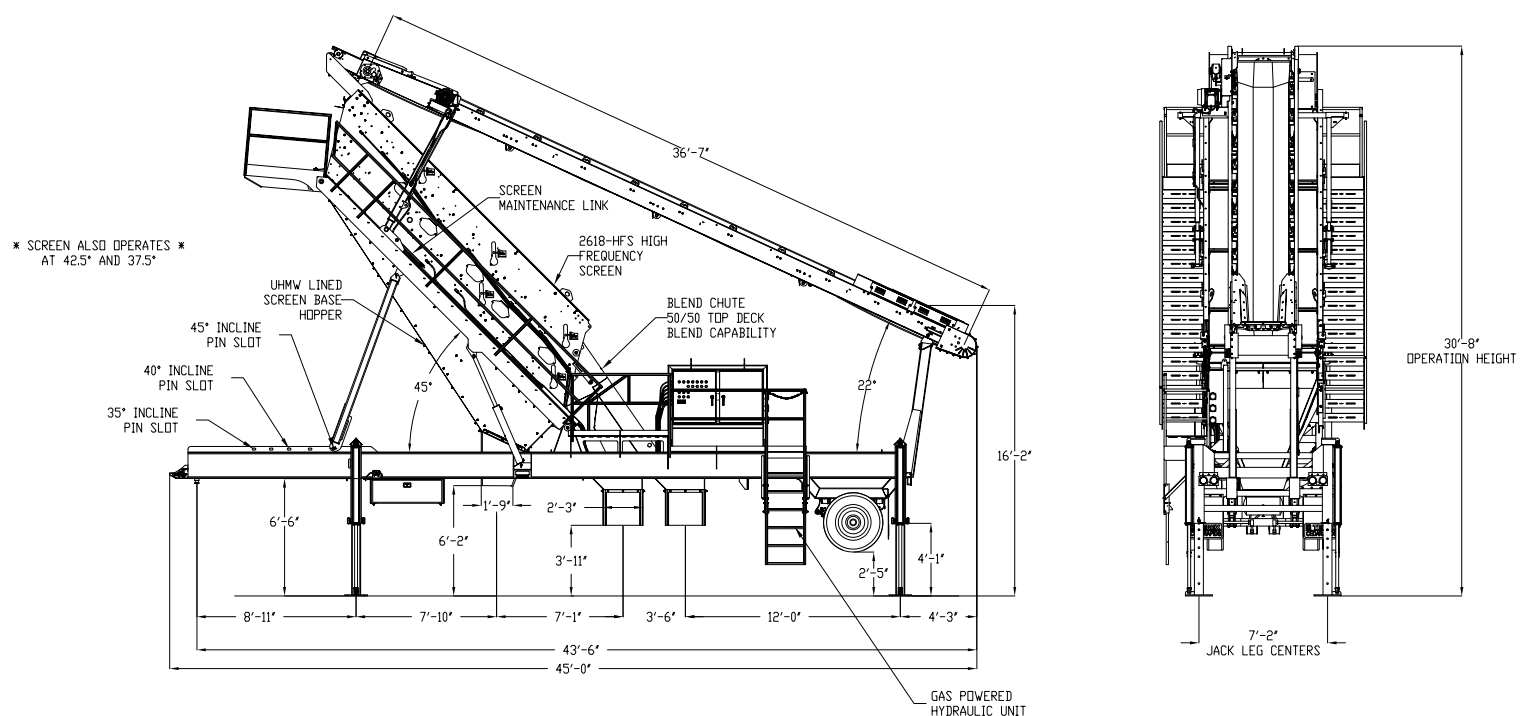
36" Wide 10hp
feed conveyor

Dual - Top deck
flop gates

48" stroke
hydraulic pinned
jacks

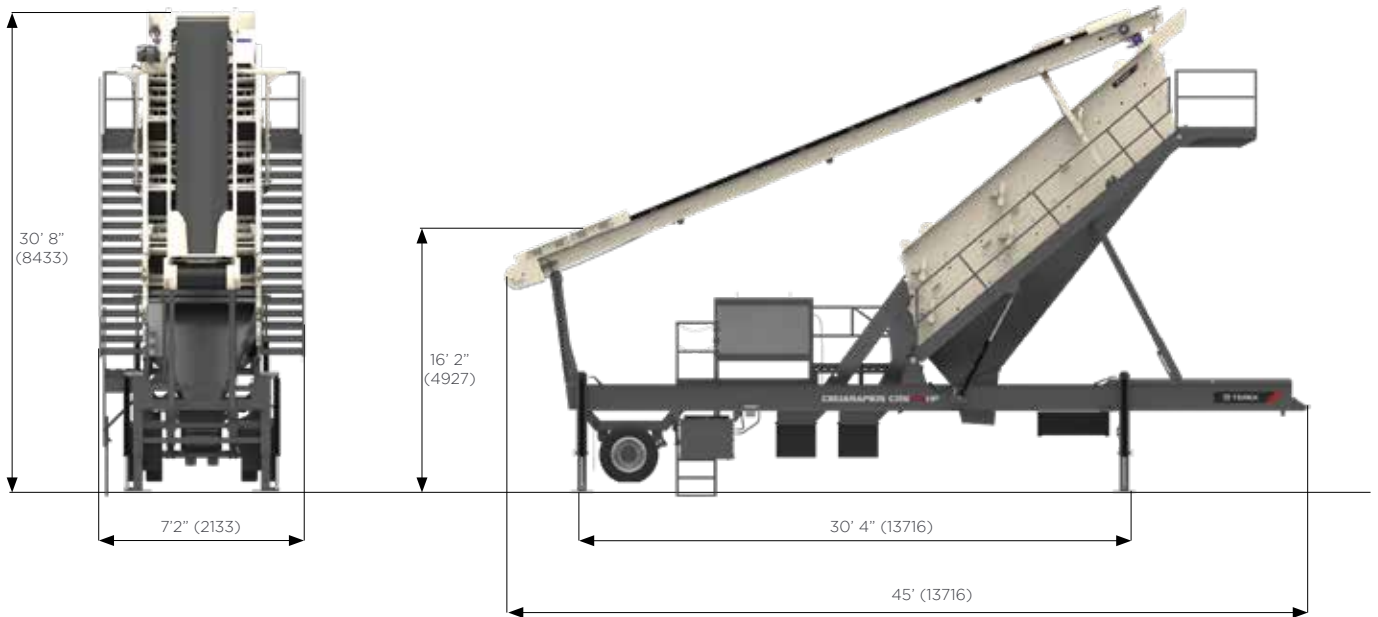
Standard Features

- High frequency screen for fine material, de-dusting applications
- Simple sliding screen support leg allows (5) operation positions from 35° to 45° in 2.5° increments.
- Hinged service platform at feed end provides safe horizontal surface to change screen cloth
- Patent Pending overhead conveyor maintenance strut and telescoping support leg provides over 12" clearance on top deck below feed conveyor when screen lowered to horizontal position.
- Self aligning distribution plate maintains proper feed onto screen without need to climb onto screen and adjust distribution plate.
- CCM Automatic control panel with 3 x 25hp off plant motor controls included
- Optional variable speed screen controls
- Patent Pending cushioned wire tensioner, maximizes wire life
- Hand access ports. (Optional full 2nd deck)
- Diamond plate service platforms and stairs can be shovel cleaned.
- UHMW lined fine hopper minimizes buildup and
- Rubber booted discharge chutes minimize spillage
- 50% flop gates in top deck chute allows blending top deck with bottom deck product.
- Chain-less discharge lips self align to discharge chutes. No heavy lifting to adjust chutes.
- Telescoping multi-position ladder provides easy access when plant lifted for operation
- 48" stroke pinned hydraulic plant legs provides up to 7' clear under frame beams for off plant conveyors.
- Remote grease lines provide easy & safe maintenance of feed conveyor bearings.



Elevation View (Operation): 45 Degree Screen Incline
HEIGHTS SHOWN WITH JACKS PINNED AT FULLY EXTENDED POSITION

Transport and Working Dimensions



Transport Dimensions

Height	13' 6"	4115 mm
Length	47' 1"	14356 mm
Width	11' 6"	3536 mm

North America

3900 Fountains Blvd NE, Suite 101
 Cedar Rapids, IA 52411
 Tel: +1 319 363 3511 or +1 800 821 5600
 Fax: +1 319 399 4871

212 South Oak Street
 Durand, MI 48429
 Tel: +1 989 288 3121
 Fax: +1 989 288 4113

Europe, Russia & Africa

Farlough Road, Dungannon
 Northern Ireland. BT71 4DT
 Tel: +44 (0) 28 8744 0795

Central Asia, Turkey & North Africa Region

Mehmet Akif Ersoy Mah.287.SkNo 1/D
 06172 Yenimahalle - Ankara Turkey
 Tel: +90 312 354 90 90

Australia

Melbourne & Victoria
 133 Logis Boulevard
 Dandenong South, VIC 3175
 Tel: +61 3 8794 4100
 Fax: +61 3 9706 7810

Sydney & New South Wales

114 Hassall Street
 Wetherill Park, NSW 2164
 Tel: +61 2 9604 6524
 Fax: +61 2 9604 9368

Brisbane & Queensland

585 Curtin Avenue East
 Eagle Farm, QLD 4009
 Tel: +61 7 3630 0866
 Fax: +61 7 3630 1097

Perth & Western Australia

4 Miles Road
 Kewdale, WA 6105
 Tel: +61 8 6254 4100
 Fax: +61 8 9350 5534

www.terexmps.com
mpsmarketing@terex.com

Product specifications and prices are subject to change without notice or obligation. The photographs and/or drawings in this document are for illustrative purposes only. Refer to the appropriate Operator's Manual for instructions on the proper use of this equipment.

Failure to follow the appropriate Operator's Manual when using our equipment or failure to act responsibly may result in serious injury or death.

The only warranty applicable to our equipment is the standard written warranty applicable to the particular product and sale, and Terex makes no other warranty, express or implied. Terex, the Terex Crown design, Cedarapids, Canica, Simplicity, Jaques, El-Jay and Rollercone are trademarks of Terex Corporation or its subsidiaries. All rights are reserved. ©August 2019

