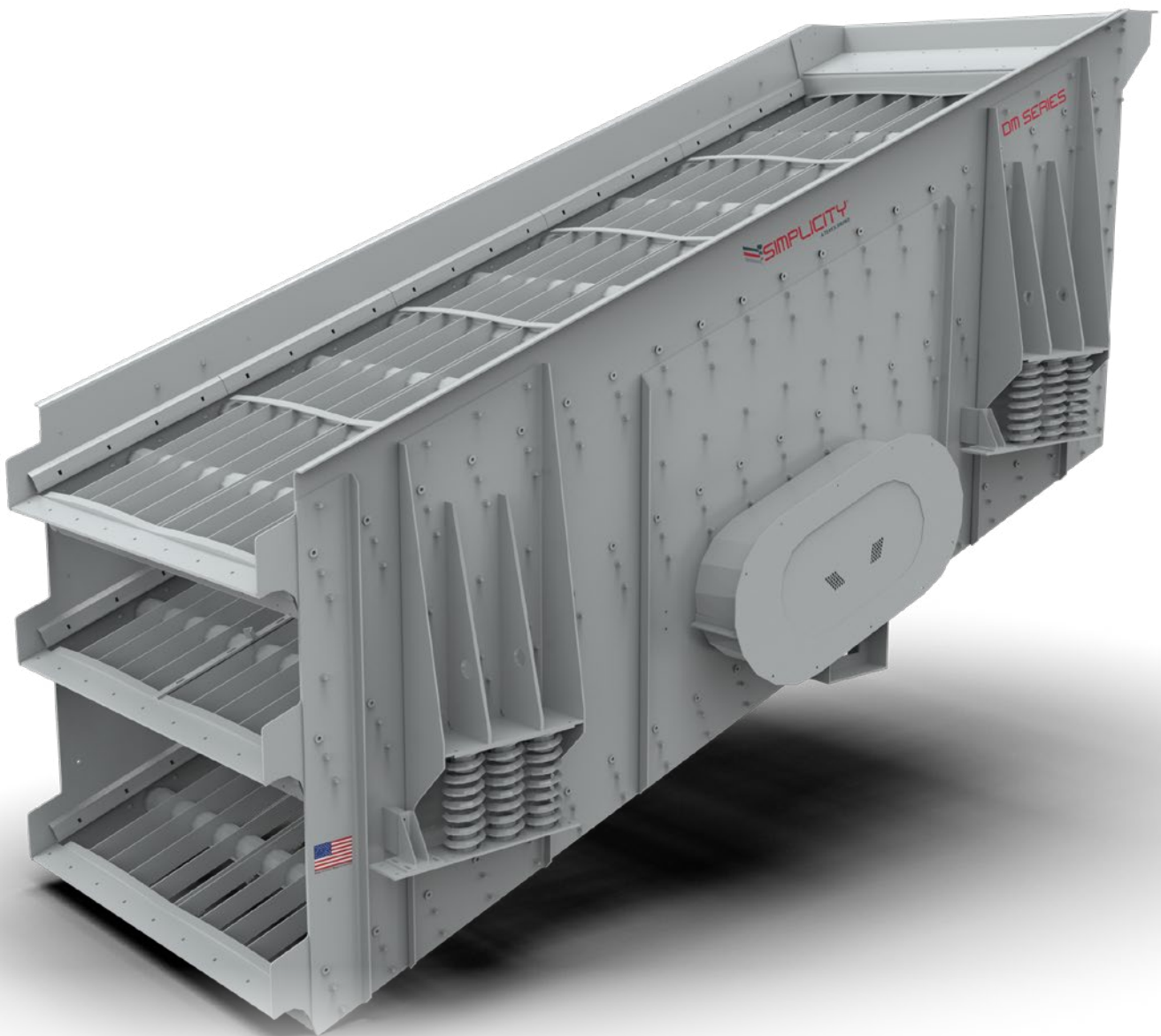




Dual Mechanism Incline Screens DM Series



A world working better™

 **TEREX** MPS

Simplicity[®] Incline Screens DM Series

Our twin shafted dual mechanism inclined screens deliver the rugged reliability for those heavy jobs. The dual mechanism is an alternative to the single shaft mechanism, but optimized to provide maximum bearing life, heavy material surges and minimum downtime.

This tough design extends bearing life in heavy-duty applications and handles increased speeds in fine screening applications.

DM screens are available in 2, 3 and 4 deck models in sizes available up to 8' x 24' (2438mm x 7315mm).

DM Series Advantages

- Designed for the most severe and demanding applications with heavy duty construction
- Twin shafts with built in versatility to ensure optimum performance and longevity
- Numerous modifications available to ensure a smooth installation and ease of maintenance
- Engineered specific to your scalping, sizing or finishing application with proven reliability
- Modified deck designs available including grizzly bars, finger tines and other specialized media

Feed boxes are designed with bolt-in replaceable abrasion resistant liners to reduce impact and wear.

A variety of deck designs to accommodate your application: single crown, double crown, flat channel construction for urethane media or perforated plate style media, scalper decks with grizzly bars or finger tines

Side plates are fabricated without any welding, protecting the integrity of the metal and reducing the chance of cracking resulting in a longer life.

Spherical washer arrangement allows for secure screen cloth tensioning and eliminates welding weldments on side plates to reduce the risk of fatigue and cracking.

Bolt-on removable spring base plates allow for quick spring changes without the need to substantially raise the screen.

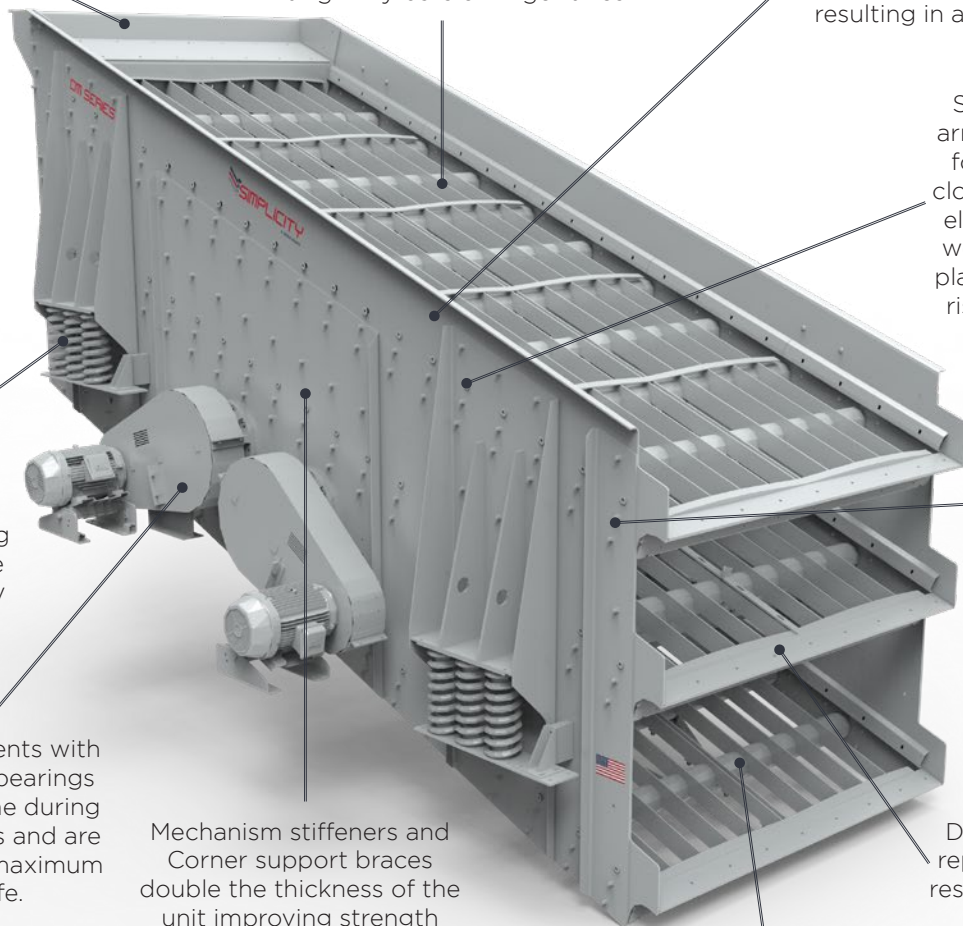
Huck® bolt construction is extremely resistant to heavy vibration, corrosion resistant and provides a permanent high strength connection between surfaces.

Drive arrangements with cartridge style bearings reduce downtime during bearing changes and are engineered for maximum bearing life.

Mechanism stiffeners and Corner support braces double the thickness of the unit improving strength and rigidity of the screen for smooth operation and longer life.

Discharge lips have replaceable abrasion resistant bolt-in liners.

Optimized space between decks allow for easier interior access for quicker media changes or inspections.

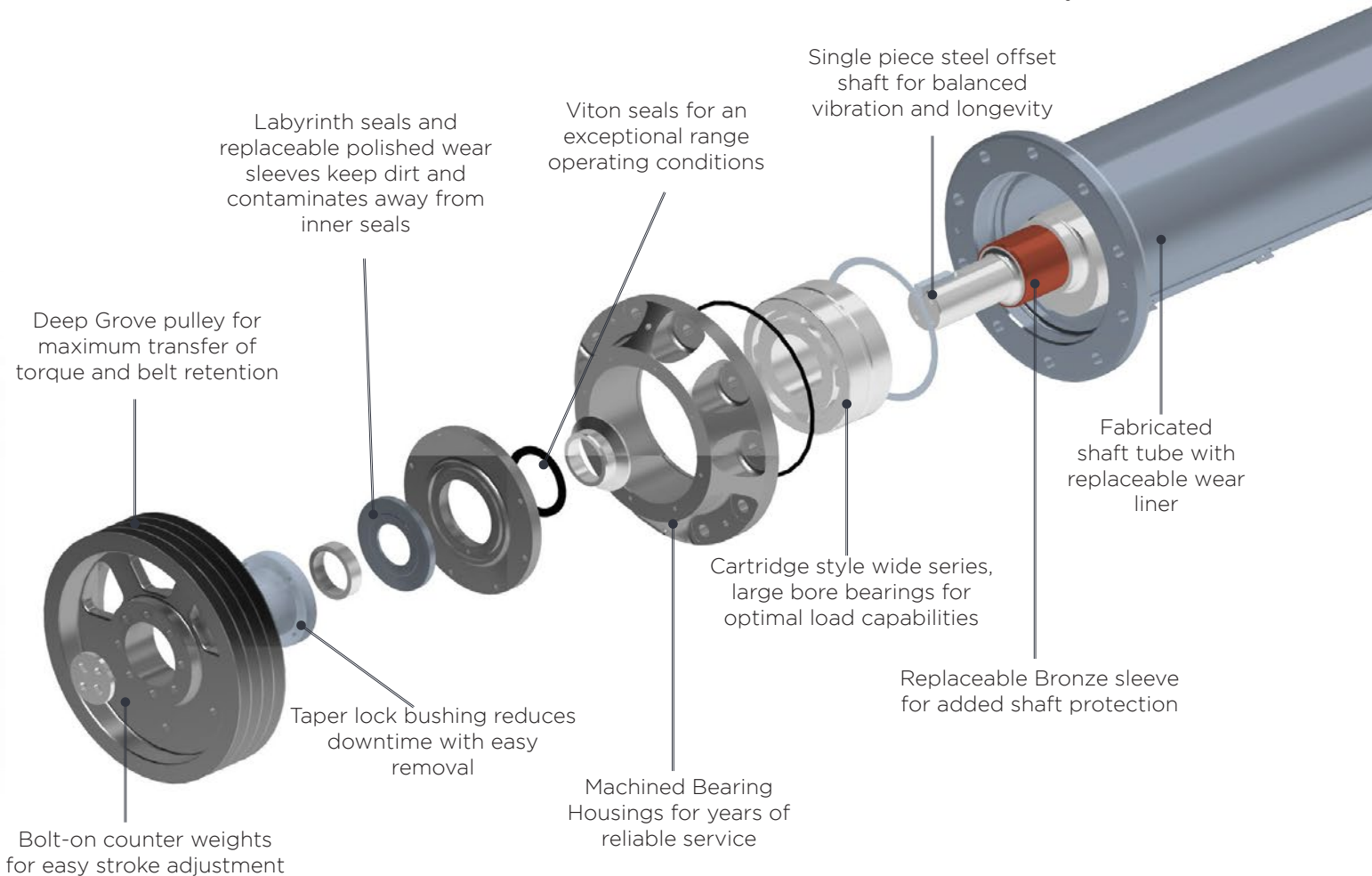


Standard Features

- Rugged dual mechanism
- 20 degree screen slope
- Side tension double crown decks
- Spherical washer design eliminates sidewall welds
- Huck-bolted screen box construction (no welds)
- Coil springs with protective spring covers
- 18" (457 mm) feed box with replaceable 3/8" (9.5 mm) thick AR liner
- 6" (152 mm) discharge lips with replaceable 3/8" (9.5 mm) thick AR liners
- Hinged feed end enclosures for easy screen cloth access on lower decks
- Right-hand or left-hand drive vibrator unit
- Oil lubricated spherical roller bearings
- Screen sheaves, motor sheaves, bushings and V-belts
- Independently mounted pivot-type motor bases
- Belt guards and flywheel guards
- Friction checks
- Rubber shaft housing covers
- 4' (1219 mm) long screen cloth clamp bars
- Extra deck clearance for all models

Optional Equipment

- Electric motors (1500 or 1800 rpm)
- Slopes other than 20 degrees
- Wedge take-ups
- Wear protection for deck cross members
- AR tube shields
- I-beam main frame with motor base support
- Rubber springs
- Recirculating oil lubrication systems, water or air cooled
- Grease lubrication
- Side plate liners
- Take-up rail liners
- Side tension single crown decks
- End tension decks
- Center split decks
- Ball tray decks
- Urethane
- Scalper
- Dust enclosures
- Spray systems
- Steel caps on crown bars for hot asphalt applications
- TOPS2.0 Terex Oil Purification System





Standard configurations listed; custom configurations and sizes upon request.

Size (mm)	Decks	HP (kW)	Weight lb (kg)
7' x 20' (2134 x 6096)	2	Consult Factory	
7' x 20' (2134 x 6096)	3	Two 25 (19)	35,000 (15875)
7' x 20' (2134 x 6096)	4	Consult Factory	
8' x 16' (2438 x 4877)	2	Consult Factory	
8' x 16' (2438 x 4877)	3	Two 20 (15)	30,800 (13970)
8' x 16' (2438 x 4877)	4	Consult Factory	
8' x 20' (2438 x 6096)	2	Two 25 (19)	30,000 (13610)
8' x 20' (2438 x 6096)	3	Two 30 (22)	40,500 (18370)
8' x 20' (2438 x 6096)	4	Two 40 (30)	53,000 (24040)
8' x 24' (2438 x 7315)	2	Two 30 (22)	36,000 (16330)
8' x 24' (2438 x 7315)	3	Two 40 (30)	44,000 (19960)
8' x 24' (2438 x 7315)	4	Two 50 (37)	59,000 (26765)

Weights are for estimate purposes only. Consult Factory for weights.

Screen width	Deck Crown	Outside Screen Cloth Dimensions
2'	Single Crown	25"
3'	Single Crown	37"
4'	Single Crown	49"
5'	Single Crown	61"
6'	Single Crown	72-3/4"
7'	Double Crown	84-3/4"
8'	Double Crown	96-3/4"

www.terexmps.com

Product specifications and prices are subject to change without notice or obligation. The photographs and/or drawings in this document are for illustrative purposes only. Refer to the appropriate Operator's Manual for instructions on the proper use of this equipment.

Failure to follow the appropriate Operator's Manual when using our equipment or failure to act responsibly may result in serious injury or death.

The only warranty applicable to our equipment is the standard written warranty applicable to the particular product and sale, and Terex makes no other warranty, express or implied. Terex, the Terex Crown design, Cedarapids, Canica, Simplicity, Jaques, El-Jay and Rollercone are trademarks of Terex Corporation or its subsidiaries. All rights are reserved. © November 2020.

HuckBolts is a registered trademark of Arconic Fastening Systems.

For use in wet applications, see below.

Screen width	Spray bars	
	Pipe diameter	Nozzles per bar
3'	1-1/2"	5
4'	1-1/2"	7
5'	1-1/2"	8
6'	1-1/2"	10
7'	2-1/2"	12
8'	2-1/2"	14

Capacity per Nozzle (based on 40 PSI to the Manifold)	
Water pressure (PSI)	1/2" orifice diameter
20 lbs	14.1 GPM
30 lbs	17.3 GPM
40 lbs	20 GPM

