

Horizontal Screens ESX Series



Simplicity® ESX Series

The ESX “Extra Clearance” Series by Simplicity is our newest addition to our trusted range of screening solutions. The elliptical stroke design has taken the legendary oval stroke screen to the next level. The increased clearance between the screen decks provides easy maintenance access to the media. Upgrades to the drive train and suspension ensure that this screen still has the performance that you can count on for years to come.

Designed for Long Life

- More steel in “rock zone” for industry leading durability; 5/16” (8 mm) Grade 50 side plates are 2-times stronger than 1/4” (6 mm) standard steel; rugged computer-optimized decks with full-length bracing are unmatched
- Patented gear case baffled lubrication system along with high tolerance machined eccentric weights provide smooth running and long bearing life
- Longer HD suspension springs handle heavier loads and improve isolation to protect the screen and support structure from shock and vibration
- Patented Dual O-Ring Huck Bolt construction is “sealed for life” requiring no re-tightening or maintenance

More Production

- Variable slope installation from zero to 10 degrees allows matching the slope to the application to minimize bed depth as well as larger screen openings up to 6”
- High G-force, high efficiency oval stroke motion adjusts 3-ways (speed, stroke angle, stroke magnitude) to optimize performance
- Patented optional bottom deck deflector plates boost screen efficiency by up to 12%
- Medium scalper option increases feed size from 10” to 14” (254 to 355 mm); option includes side liners/ with 6” side extensions to contain larger stones

Reduced Cost of Ownership

- ESX (Extra Clearance Screen) provides additional clearance compared to typical horizontal screen between all deck for easy maintenance access.
- Maintenance-friendly features include:
 - The patented low maintenance surge damper system
 - Bolt-on upper and lower spring guides
 - “Tool-less” oil check sight glasses
 - Sidewall hand access system for wire cloth clamp bars
 - Bottom deck feed curtain
 - Optional magnetic deck wear liners
 - Optional “TOPS 2.0” oil filtering system
- Patented “flow-through” lubrication system and patented “sealed-for-life” double O-ring construction provides maximum equipment life

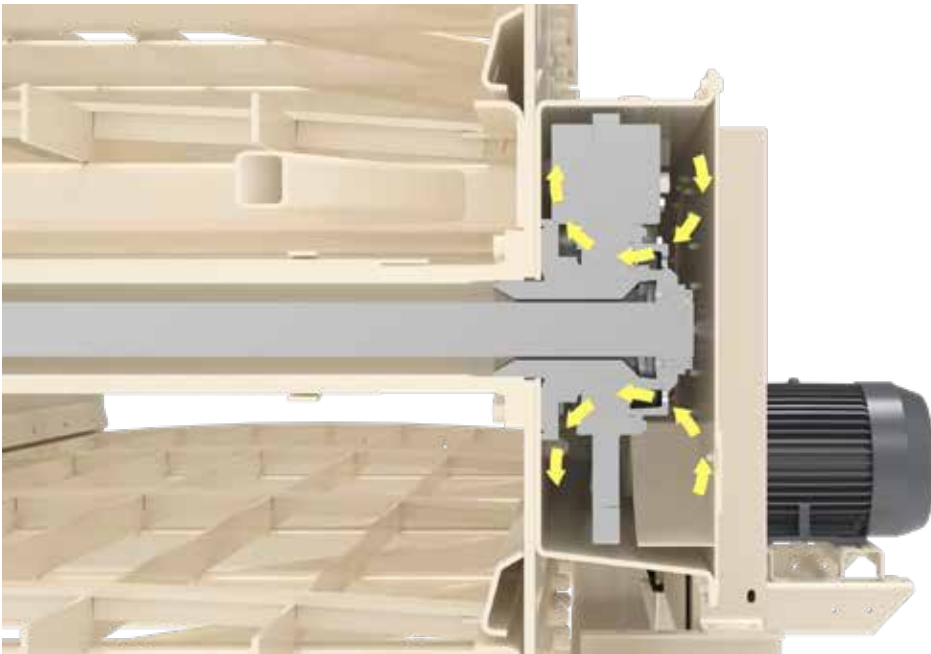




Low maintenance, no adjustment surge damper system



Optional deflector plates increase bottom deck effective area and capacity



Cross-Section of Lubrication 6 x 20 screen

Applications



Ore/Hard Rock Mining



Quarried Stone



River Gravel



Recycle Concrete



Fractured Gravel



Cubical Products



Washing, Recycled Asphalt

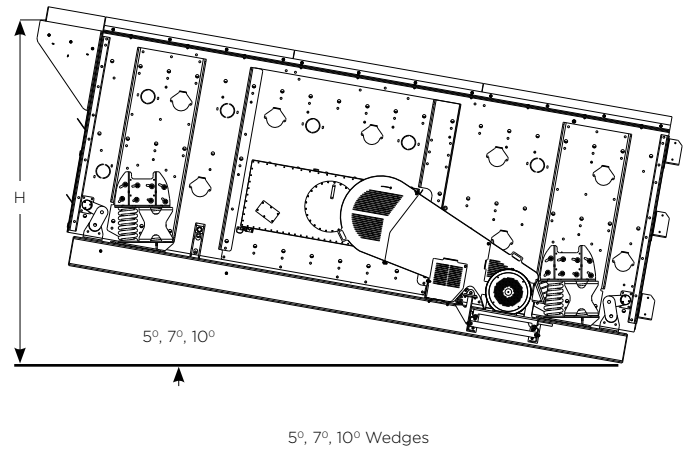
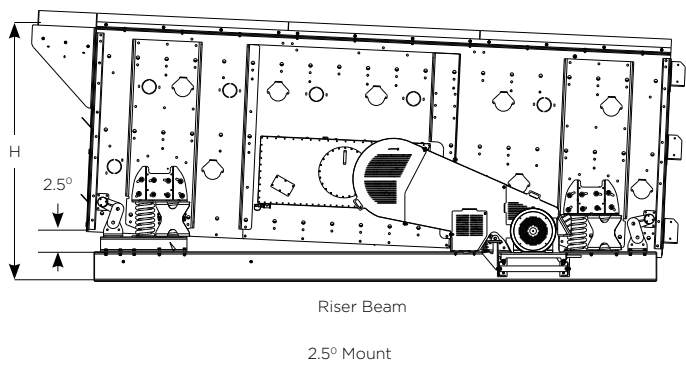
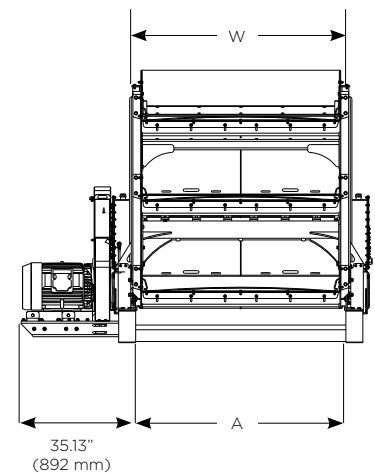
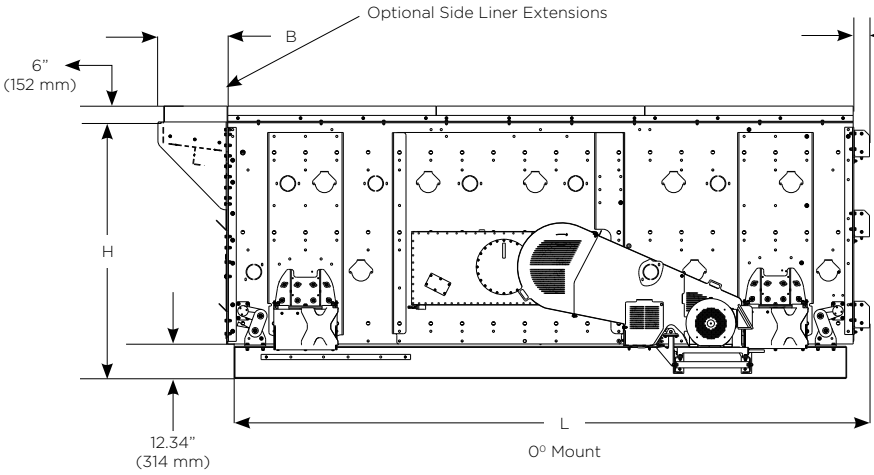
Standard Features

- Oval stroke with adjustable angle, stroke and speed
- 25% thicker 5/16" (8 mm) grade 50 high strength steel side plates
- Heavy-duty fully braced single crown steel deck construction
- Spring mounts adjust for 0°, 2.5°, 5°, 7.5° or 10° slope installations
- Exclusive patented features for durability and easy maintenance:
 - Low maintenance vibration damper system
 - "Flow-through" bearing lubrication
 - Baffled splash lubrication system
 - Double O-ring sealed-for-life vibrator construction
 - Patented dual pivot no maintenance surge dampers
- Screen cloth clamp bar hand access system with removable covers
- Spherical washer design eliminates sidewall welds
- Huck-bolted screen box construction (no welds)
- Extended life coil spring suspension
- HD Extended life coil spring suspension
- Replaceable bolt-on spring guides
- Gland type non-wearing shaft seal
- Middle and bottom deck rubber feed curtain with patented maintenance position
- 4' (1219 mm) clamp bars with spherical washer tensioning system
- Extended life V-belt drive with sheaves for 1200 rpm motor
- Enclosed right-hand drive guard, motor mount, and tensioner
- Adjustable speed motor drive sheave and spring loaded belt tension idler
- Self aligning two row spherical roller bearings
- Synthetic broad range lubrication oil
- Spray pipe knock-outs
- Shaft tube liners
- Tool-less oil level sight glasses

Optional Equipment

- Medium scalping option (heavier top deck, side liner extensions, feedbox and discharge lip)
- Patented bottom deck deflector plates boost efficiency
- Replaceable magnetic deck wear liners
- End-tension bottom deck
- Flat decks for modular media
- Rigid I-beam base frame
- Left-hand drive assembly and guard
- 1500 rpm drive
- 5' (1524 mm) wire clamp bars (6x20 and 7x20 models)
- Rubber spring suspension
- Spray system (nozzle or splash)
- Wire screen cloth
- Screen-duty electric motor (1200 rpm or 1500 rpm)
- TOPS2.0 Terex Oil Purification System
- Wedge Angle Kits





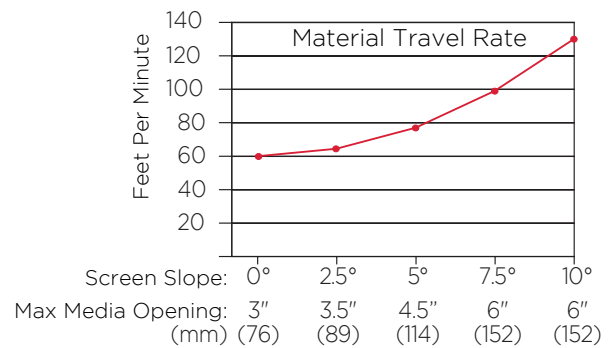
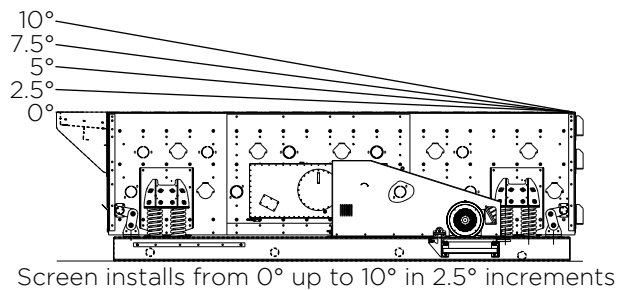
Dimension in inches (mm) for Standard Coil Springs

Screen	1200 rpm	*Weight	**H @ 0°	**H @ 2.5°	**H @ 5°	**H @ 7.5°	**H @ 10°	L	W	A	B
6 x 20 3 deck	50hp (37kW)	22650lbs (10275kg)	98.26" (1942mm)	106.90" (2715mm)	121.00" (3073mm)	131.95" (3351mm)	142.83" (3628mm)	240" (6096)	76" (1930mm)	87" (2210mm)	26.50" (673mm)

Specifications		
Maximum stroke (stroke can be reduced by removing weight plugs)	3/4"	19 mm
Recommended speed range	675 - 875 rpm	
Maximum feed size, standard decks	10"	254 mm
Maximum feed size, medium scalping decks	14"	356 mm
Maximum drop of feed	18"	457 mm
Discharge lip liner thickness (AR plate)	1/4"	6 mm
Feed box liners, standard (AR plate)	1/4"	6 mm
Feed box liners, medium scalping (AR plate)	3/8"	9.5 mm
Bearing size (6x20 models)	160 mm HD*	
Wire cloth length, standard	4'	1219 mm
Wire cloth length, optional	5'	1524 mm

NOTE: HD* - Heavy Duty, this bearing is 24mm wider than the standard ES bearing

Screen Slope	Maximum Media Opening		Material Travel Rate	
0°	3"	76 mm	60 ft/minute	18.3 m/minute
2.5°	3.5"	89 mm	64 ft/minute	19.2 m/minute
5°	4.5"	114 mm	77 ft/minute	23.5 m/minute
7.5°	6"	152 mm	99 ft/minute	30.2 m/minute
10°	6"	152 mm	130 ft/minute	39.6 m/minute



Combining high G-force oval stroke and screen slope increases capabilities

Versatility for Your Application

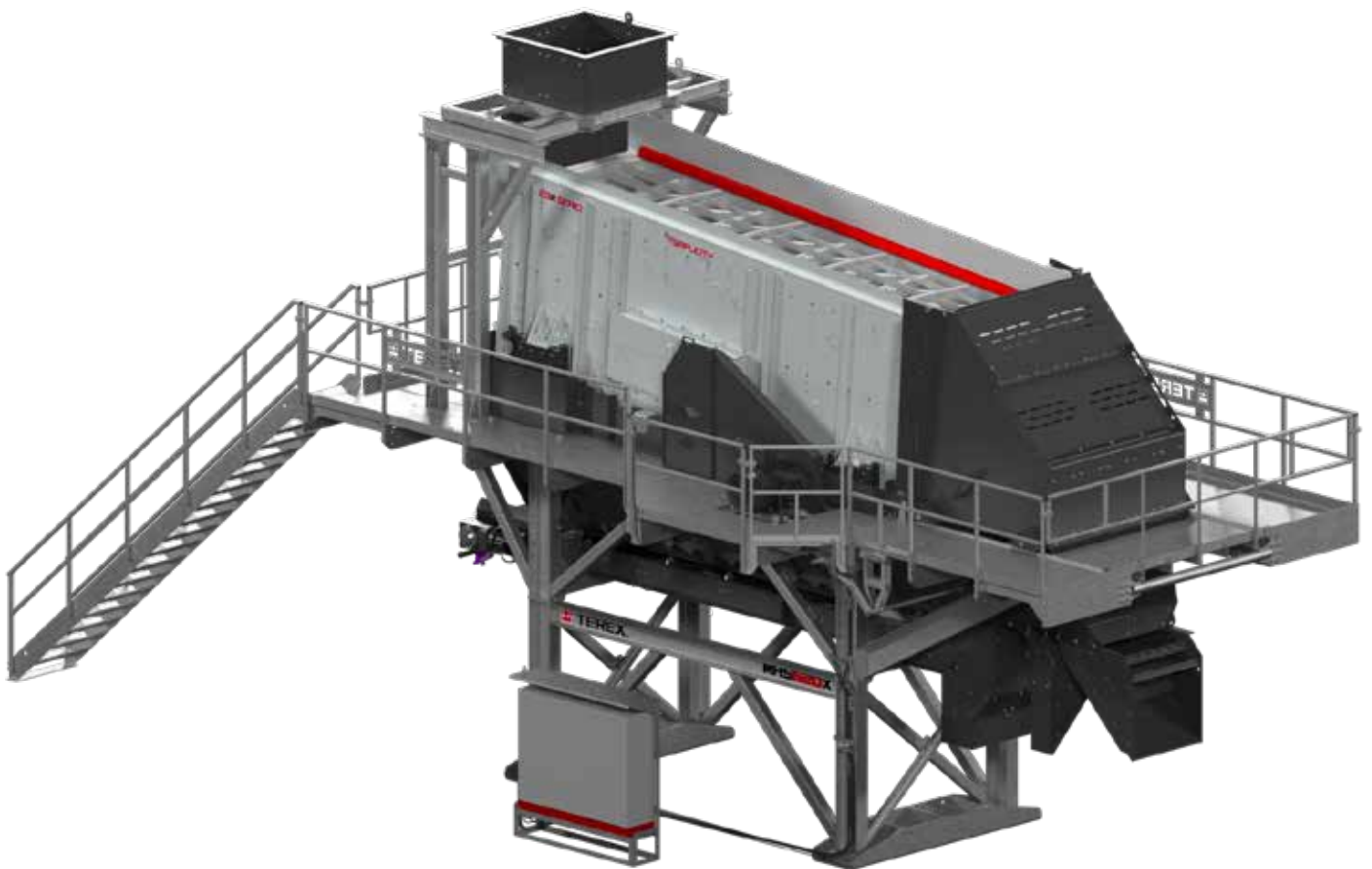


MODULAR



STATIC

Available as static screens for a custom fit for your application or available in pre-engineered modular options for easy installation.



Modular

Model	Main Components	Motor Size	Shipping Configuration
MHS620X	6' x 20' three deck horizontal screen	50 hp (37 kW)	(2) 40ft shipping container plus (1) flat rack for the screen

www.terexmps.com
mpsmarketing@terex.com

Product specifications and prices are subject to change without notice or obligation. The photographs and/or drawings in this document are for illustrative purposes only. Refer to the appropriate Operator's Manual for instructions on the proper use of this equipment.

Failure to follow the appropriate Operator's Manual when using our equipment or failure to act responsibly may result in serious injury or death.

The only warranty applicable to our equipment is the standard written warranty applicable to the particular product and sale, and Terex makes no other warranty, express or implied. Terex, the Terex Crown design, Cedarapids, Canica, Simplicity, Jaques, El-Jay and Rollercone are trademarks of Terex Corporation or its subsidiaries. All rights are reserved. © March 2024

